

EU Bovine Production



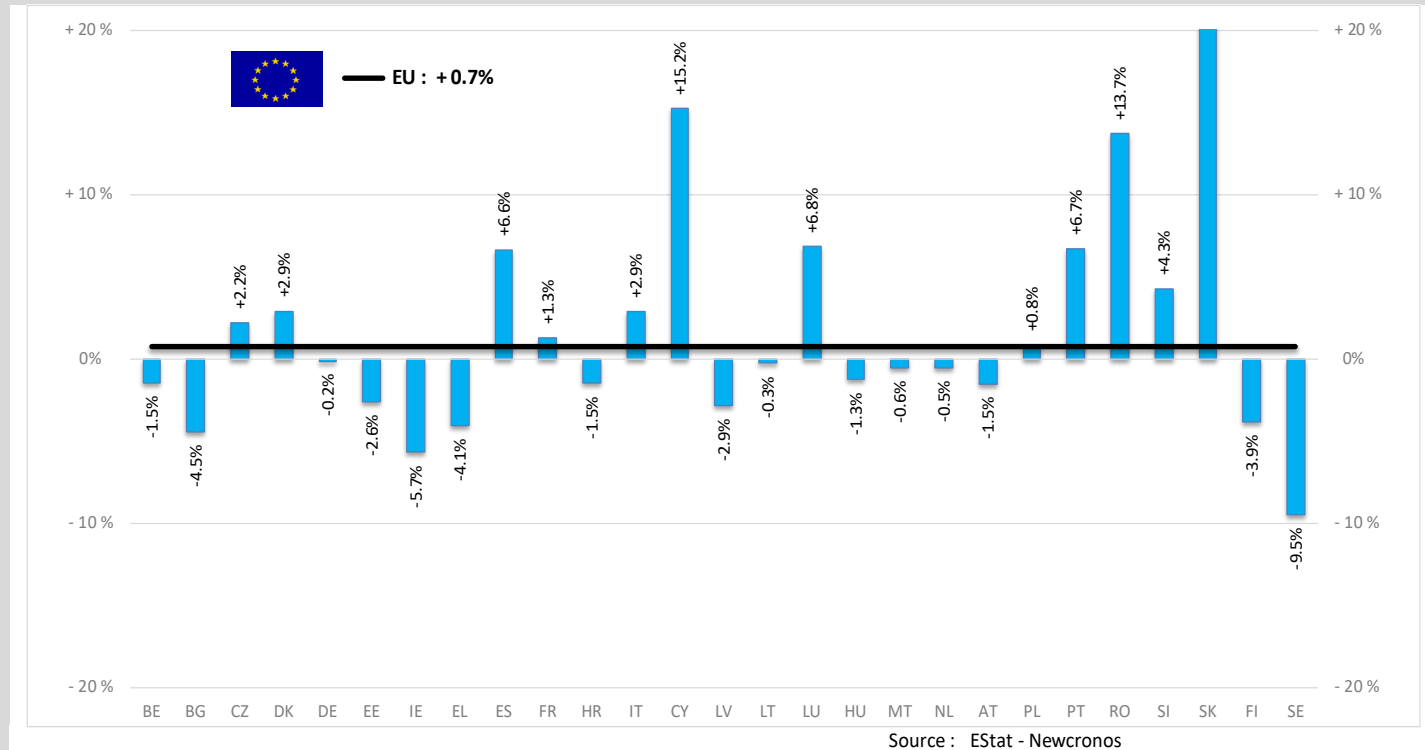
➔ [Production in 1000 Tons](#)

➔ [Bovine Livestock](#)

Last update : 26.08.2021

HEADS	Jan-May 21/20
	EU
Bull	+1.0%
Bullock	-1.8%
Cow	+2.1%
Heifer	+1.5%
Calve	-1.8%
Young cattle	+0.9%
Meat of bovine animals	+0.7%

Estimates for last month of period :





Jan-May issing Countries (TotBov) :

BEEF MEAT PRODUCTION OVERVIEW (Consolidated Figures and *Forecasts by Animal and Country) - 1000 HEADS

Meat of bovine animals	BE	BG	CZ	DK	DE	EE	IE	EL	ES	FR	HR	IT	CY	LV	LT	LU	HU	MT	NL	AT	PL	PT	RO	SI	SK	FI	SE	EU
2017	920	35	227	467	3 505	35	1 852	181	2 391	4 626	183	2 651	17	80	156	26	106	4	2 158	678	1 931	377	275	120	29	274	406	23 711
2018	888	34	237	491	3 416	35	1 896	166	2 463	4 626	180	2 768	17	76	155	27	112	4	2 243	694	1 942	384	233	116	30	275	426	23 933
2019	838	27	239	464	3 387	34	1 853	144	2 511	4 546	183	2 730	17	70	157	28	112	4	2 123	681	1 854	369	196	116	29	269	433	23 413
2020	783	30	235	448	3 263	35	1 882	144	2 422	4 486	170	2 694	15	67	150	28	106	4	2 089	645	1 851	393	132	118	26	262	434	22 913
* 2021	764	31	239	459	3 229	35	1 827	139	2 529	4 527	163	2 752	16	65	147	29	103	4	2 074	624	1 849	421	137	122	31	254	405	22 976
% 18/17	-3.5%	-2.4%	+4.0%	+5.0%	-2.5%	-0.9%	+2.4%	-8.3%	+3.0%	+0.0%	-1.2%	+4.4%	+1.7%	-5.2%	-0.9%	+3.1%	+6.1%	-3.2%	+3.9%	+2.4%	+0.6%	+1.7%	-15.2%	-3.6%	+4.0%	+0.2%	+4.8%	+0.9%
% 19/18	-5.7%	-22.2%	+1.0%	-5.4%	-0.8%	-1.9%	-2.3%	-13.1%	+2.0%	-1.7%	+1.6%	-1.4%	+2.2%	-7.9%	+1.6%	+4.1%	+0.0%	-6.3%	-5.3%	-2.0%	-4.6%	-3.8%	-15.9%	+0.5%	-5.6%	-2.0%	+1.7%	-2.2%
% *20/19	-6.6%	+13.9%	-1.8%	-3.5%	-3.7%	+2.6%	+1.6%	+0.1%	-3.5%	-1.3%	-7.4%	-1.3%	-11.1%	-4.4%	-4.6%	-0.9%	-5.7%	+11.4%	-1.6%	-5.3%	-0.1%	+6.5%	-32.7%	+1.6%	-8.9%	-2.8%	+0.4%	-2.1%
% *21/*20	-2.4%	+1.2%	+1.7%	+2.5%	-1.0%	-1.0%	-2.9%	-3.6%	+4.4%	+0.9%	-3.7%	+2.1%	+7.3%	-3.4%	-1.5%	+4.9%	-2.6%	+0.8%	-0.7%	-3.2%	-0.1%	+6.9%	+3.8%	+3.5%	+20.2%	-2.8%	-6.8%	+0.3%
Jan-May 20	315	12	95	172	1 310	14	751	59	953	1 824	66	1 084	7	28	60	11	43	2	830	266	734	151	48	46	10	105	180	9 176
Jan-May 21	311	11	97	177	1 308	14	709	57	1 017	1 847	65	1 115	8	27	59	12	42	2	826	262	740	161	55	48	13	101	163	9 245
% Chg	-1.5%	-4.5%	+2.2%	+2.9%	-0.2%	-2.6%	-5.7%	-4.1%	+6.6%	+1.3%	-1.5%	+2.9%	+15.2%	-2.9%	-0.3%	+6.8%	-1.3%	-0.6%	-0.5%	-1.5%	+0.8%	+6.7%	+13.7%	+4.3%	+27.2%	-3.9%	-9.5%	+0.7%

EU Bovine Production



Bull	BE	BG	CZ	DK	DE	EE	IE	EL	ES	FR	HR	IT	CY	LV	LT	LU	HU	MT	NL	AT	PL	PT	RO	SI	SK	FI	SE	EU
2017	159	9	92	88	1325	8	225	74	579	902	77	897	5	19	54	10	24	2	73	265	960	117	29	62	11	142	174	6382
2018	153	8	95	81	1270	8	237	60	618	899	77	911	6	16	52	10	26	2	72	271	968	117	31	60	12	140	175	6393
2019	145	6	100	78	1262	8	246	50	723	855	80	885	6	14	54	10	24	2	51	260	953	113	28	60	15	139	180	6502
2020	147	7	99	70	1245	8	174	50	712	845	76	868	5	14	55	10	21	2	57	248	976	118	20	62	15	134	181	6379
* 2021	144	9	102	64	1197	8	140	44	836	877	77	909	6	15	52	11	20	2	59	235	946	122	19	62	14	129	170	6522
% 18/17	-3.8%	-9.5%	+3.5%	-8.0%	-4.2%	-1.2%	+5.4%	-19.3%	+6.8%	-0.3%	-0.6%	+1.6%	+11.8%	-16.5%	-4.4%	-0.2%	+7.1%	-6.5%	-1.1%	+2.2%	+0.8%	+0.1%	+8.8%	-4.0%	+7.5%	-1.4%	+0.5%	+0.2%
% 19/18	-5.4%	-23.0%	+5.3%	-4.2%	-0.6%	-1.1%	+3.6%	-16.7%	+17.0%	-4.9%	+4.2%	-2.8%	+14.1%	-7.7%	+4.5%	-3.1%	-5.2%	-3.2%	-29.4%	-4.1%	-1.6%	-3.1%	-10.7%	+0.7%	+19.5%	-0.1%	+2.7%	+1.7%
% *20/19	+1.7%	+13.2%	-0.9%	-10.4%	-1.3%	-3.4%	-29.3%	+0.8%	-1.5%	-1.1%	-5.6%	-1.9%	-27.9%	-0.4%	+1.6%	+3.8%	-12.3%	+5.5%	+11.5%	-4.4%	+2.4%	+4.3%	-28.8%	+2.0%	+5.4%	-4.1%	+0.4%	-1.9%
% *21/*20	-2.3%	+31.6%	+2.6%	-8.5%	-3.9%	+2.3%	-19.2%	-12.7%	+17.4%	+3.7%	+2.6%	+4.7%	+24.2%	+2.6%	-4.5%	+3.2%	-5.2%	-1.6%	+3.9%	-5.3%	-3.1%	+3.5%	-4.8%	+0.8%	-8.7%	-3.4%	-6.0%	+2.2%
Jan-May 20	61	2	40	27	505	3	88	20	272	330	29	346	2	5	23	4	8	1	23	103	404	47	7	24	7	56	70	2508
Jan-May 21	59	3	41	24	481	3	72	17	327	345	31	367	3	6	22	4	8	1	23	98	392	49	7	24	6	54	65	2532
% Chg	-4.0%	+26.3%	+3.2%	-10.0%	-4.8%	+3.3%	-17.9%	-15.8%	+20.3%	+4.5%	+4.8%	+6.1%	+38.5%	+2.4%	-6.0%	+1.3%	-0.5%	-3.7%	+2.1%	-4.6%	-2.8%	+4.2%	-1.0%	+0.7%	-11.3%	-3.5%	-7.9%	+1.0%
Bullock	BE	BG	CZ	DK	DE	EE	IE	EL	ES	FR	HR	IT	CY	LV	LT	LU	HU	MT	NL	AT	PL	PT	RO	SI	SK	FI	SE	EU
2017	0	-	0	4	24	0	685	1	5	173	-	7	-	-	-	1	0	-	-	34	-	1	5	1	-	-	36	976
2018	0	-	1	6	24	0	673	1	5	157	-	5	-	-	-	1	0	-	-	37	-	1	3	0	-	-	36	936
2019	0	-	1	7	24	0	633	2	7	143	-	5	-	-	-	1	0	-	-	37	-	1	5	0	-	-	34	937
2020	0	-	1	7	26	0	698	1	6	144	-	5	-	-	-	1	0	-	-	35	-	2	3	0	-	-	34	912
* 2021	1	-	1	7	26	0	692	1	6	154	-	5	-	-	-	1	0	-	-	35	-	2	3	1	-	-	32	834
% 18/17	+94.1%		+38.3%	+52.5%		-10.3%	-1.7%	-2.0%	+4.2%	-9.6%		-30.5%				-7.4%	-46.7%			+11.8%		-8.5%	-32.2%	-17.2%			-1.8%	-4.1%
% 19/18	-9.1%		-7.7%	+11.5%		+3.8%	-5.9%	+72.2%	+40.6%	-8.9%		+8.3%				+12.7%	-46.7%			-0.5%		+0.9%	+48.5%	-6.2%			-4.3%	+0.1%
% *20/19	+13.3%		+6.7%	+5.9%	+8.3%		+10.3%	-22.2%	-18.5%	+1.3%		+4.7%				-5.6%	Δ			-6.6%		+41.7%	-41.7%	-2.2%			-0.0%	-2.7%
% *21/*20	Δ		+32.9%	-1.0%	+0.6%		-0.9%	-25.4%	+0.5%	+6.8%		-0.9%				-9.6%	Δ			+0.1%		+14.4%	+12.6%	+16.8%			-4.7%	-8.5%
Jan-May 20	0	-	0	3	10	0	249	1	2	58	-	2	-	-	-	0	0	-	-	15	-	1	1	0	-	-	15	356
Jan-May 21	0	-	0	3	10	0	239	0	3	62	-	2	-	-	-	0	0	-	-	15	-	1	1	0	-	-	14	350
% Chg	Δ		+28.0%				-4.3%	-25.9%	+8.2%	+7.7%		-2.5%				-6.1%	Δ			+1.9%		+16.7%	+29.3%	+23.5%			-6.1%	-1.8%

EU Bovine Production



Cow	BE	BG	CZ	DK	DE	EE	IE	EL	ES	FR	HR	IT	CY	LV	LT	LU	HU	MT	NL	AT	PL	PT	RO	SI	SK	FI	SE	EU
2017	366	19	102	172	1243	19	375	33	362	1659	23	527	5	37	71	8	67	1	566	204	601	78	154	20	14	79	127	1743
2018	364	20	107	183	1236	20	399	32	353	1691	20	573	5	37	72	9	70	1	524	206	604	83	112	20	15	79	141	2010
2019	337	15	104	171	1186	18	350	28	343	1650	17	545	5	33	71	10	71	1	413	201	548	77	87	22	11	72	141	1969
2020	331	16	101	167	1106	19	371	26	325	1651	16	526	4	32	65	9	67	1	461	176	531	76	55	22	9	71	138	1921
* 2021	334	15	100	173	1100	19	400	25	351	1636	16	553	6	32	66	9	65	2	479	172	541	87	54	23	13	69	122	1790
% 18/17	-0.5%	+6.6%	+4.9%	+6.6%	-0.6%	+1.2%	+6.3%	-1.1%	-2.5%	+2.0%	-12.4%	+8.8%	-0.2%	+1.0%	+1.5%	+12.7%	+4.4%	-5.0%	-7.4%	+0.7%	+0.6%	+6.0%	-27.6%	+1.2%	+4.7%	+0.4%	+10.5%	+15.3%
% 19/18	-7.4%	-25.2%	-2.8%	-6.7%	-4.0%	-9.3%	-12.3%	-12.3%	-2.9%	-2.4%	-13.7%	-5.0%	-3.8%	-10.4%	-0.8%	+10.1%	+0.9%	-6.8%	-21.1%	-2.2%	-9.2%	-7.3%	-21.6%	+6.2%	-22.6%	-9.1%	+0.5%	-2.0%
% *20/19	-2.0%	+7.2%	-3.4%	-2.5%	-6.7%	+6.5%	+5.9%	-9.8%	-5.2%	+0.0%	-6.5%	-3.4%	-8.2%	-4.1%	-8.1%	-10.3%	-4.5%	+21.1%	+11.5%	-12.4%	-3.1%	-0.5%	-36.7%	+1.0%	-18.6%	-1.9%	-2.3%	-2.5%
% *21/*20	+1.1%	-5.7%	-0.6%	+3.7%	-0.5%	-0.2%	+8.0%	-3.6%	+8.1%	-0.9%	-2.2%	+5.1%	+31.1%	+1.3%	+0.7%	+0.8%	-4.0%	+7.2%	+3.8%	-2.3%	+1.8%	+14.8%	-2.9%	+6.8%	+38.0%	-2.3%	-11.7%	-6.8%
Jan-May 20	127	7	41	64	437	8	134	11	112	669	7	202	2	13	24	4	28	1	184	71	199	28	22	8	4	28	57	2488
Jan-May 21	128	6	41	67	445	7	139	11	126	663	7	217	3	13	25	4	27	1	188	73	205	33	23	9	5	26	48	2541
% Chg	+1.1%	-9.1%	-0.2%	+4.7%	+1.8%	-3.3%	+3.9%	-0.4%	+12.9%	-1.0%	+1.5%	+7.4%	+44.7%	+2.0%	+4.1%	+6.2%	-3.9%	+4.9%	+2.1%	+3.0%	+3.3%	+19.6%	+7.2%	+7.7%	+52.7%	-4.6%	-15.3%	+2.1%
Heifer	BE	BG	CZ	DK	DE	EE	IE	EL	ES	FR	HR	IT	CY	LV	LT	LU	HU	MT	NL	AT	PL	PT	RO	SI	SK	FI	SE	EU
2017	13	2	24	59	545	4	553	17	355	570	27	520	2	11	23	6	9	1	15	119	306	49	13	19	2	51	54	3370
2018	13	2	25	63	549	4	567	20	417	588	30	610	2	11	23	6	10	1	14	125	312	53	12	18	2	54	59	2025
2019	10	2	26	61	574	4	591	18	438	579	34	622	2	10	24	6	10	1	11	127	302	52	12	18	2	56	63	1954
2020	10	3	26	56	559	5	610	17	439	585	32	648	2	9	23	6	11	1	12	110	297	55	8	19	2	56	68	2180
* 2021	14	3	28	58	580	5	579	18	465	609	27	640	2	8	22	7	11	0	13	104	311	59	8	20	2	55	69	2118
% 18/17	+1.0%	-10.8%	+4.2%	+7.1%	+0.7%	-5.4%	+2.6%	+13.8%	+17.2%	+3.0%	+10.0%	+17.3%	-2.8%	-3.6%	+1.5%	-2.8%	+14.3%	-1.7%	-6.8%	+4.9%	+1.8%	+10.0%	-3.6%	-6.1%	-2.8%	+4.1%	+9.1%	-39.9%
% 19/18	-18.8%	+4.8%	+4.9%	-4.0%	+4.6%	+16.2%	+4.1%	-10.1%	+5.0%	-1.5%	+13.4%	+2.0%	-3.3%	-8.8%	+3.8%	+2.5%	+3.1%	+7.0%	-21.9%	+1.7%	-3.2%	-2.7%	-5.6%	+1.8%	-19.3%	+4.0%	+6.5%	-3.5%
% *20/19	-5.6%	+46.5%	+1.7%	-7.6%	-2.6%	+7.9%	+3.4%	-3.2%	+0.2%	+1.0%	-4.4%	+4.2%	-20.5%	-12.3%	-5.6%	+4.8%	+2.3%	-6.6%	+11.5%	-13.6%	-1.7%	+6.3%	-29.9%	+0.8%	-6.2%	+0.3%	+9.0%	+11.6%
% *21/*20	+45.6%	-11.7%	+5.8%	+3.5%	+3.8%	+7.2%	-5.2%	+5.1%	+6.1%	+4.1%	-17.4%	-1.3%	+10.1%	-4.9%	-4.5%	+13.6%	+1.5%	-26.9%	+3.8%	-5.5%	+4.9%	+5.9%	+2.7%	+5.9%	+15.0%	-1.3%	+1.0%	-2.9%
Jan-May 20	3	1	11	21	223	2	253	6	173	238	12	269	1	4	9	3	4	0	5	45	115	21	3	7	1	21	31	1481
Jan-May 21	5	1	12	22	236	2	232	7	189	249	10	263	1	4	9	3	4	0	5	44	122	22	3	8	1	20	30	1504
% Chg	+61.1%	-22.9%	+6.6%	+6.2%	+5.8%	+8.0%	-8.4%	+7.4%	+9.2%	+4.7%	-19.8%	-2.2%	+23.7%	-2.6%	-3.9%	+16.1%	+2.0%	-26.9%	+2.0%	-1.9%	+6.8%	+5.2%	+14.4%	+8.2%	+22.5%	-3.8%	-2.9%	+1.5%

EU Bovine Production



Calve	BE	BG	CZ	DK	DE	EE	IE	EL	ES	FR	HR	IT	CY	LV	LT	LU	HU	MT	NL	AT	PL	PT	RO	SI	SK	FI	SE	EU
2017	371	1	7	-	329	2	6	14	91	1 239	52	633	0	10	7	0	3	-	1 362	56	55	50	21	15	1	1	3	4 329
2018	349	1	7	1	320	1	9	13	97	1 214	51	618	0	9	7	0	4	0	1 474	55	54	47	25	14	1	1	3	4 358
2019	337	1	6	1	324	2	12	11	114	1 244	50	625	0	9	6	0	4	-	1 487	55	47	41	21	13	1	1	3	4 272
2020	287	1	6	1	312	2	27	11	90	1 185	43	601	0	9	6	0	3	-	1 407	56	43	47	8	13	0	0	3	4 269
* 2021	265	2	6	1	308	4	21	11	58	1 173	40	599	0	7	7	1	4	-	1 376	55	48	52	13	13	0	0	2	4 358
% 18/17	-6.0%	+5.0%	-7.1%		-2.7%	-7.5%	+43.8%	-8.5%	+7.0%	-2.0%	-2.9%	-2.4%	+17.6%	-5.2%	-3.9%	-2.7%	+28.8%		+8.2%	-2.0%	-1.0%	-5.5%	+19.2%	-6.1%	+1.0%	+5.3%	+8.1%	+0.7%
% 19/18	-3.5%	+10.5%	-11.3%	+100.0%	+1.3%	+14.8%	+43.7%	-16.9%	+16.6%	+2.5%	-2.8%	+1.0%	-5.0%	+2.1%	-4.1%	+5.6%	+0.6%		+0.9%	-0.2%	-13.4%	-12.1%	-17.6%	-10.2%	-43.4%	-7.6%	-4.7%	-2.0%
% *20/19	-14.9%	+4.3%	-5.0%	-16.7%	-3.7%	+14.6%	Δ	+0.1%	-20.7%	-4.7%	-12.8%	-3.8%	+26.3%	-1.2%	-7.9%	+15.8%	-19.0%		-5.4%	+1.8%	-8.3%	+13.7%	-61.2%	+1.3%	-34.2%	-42.5%	-9.5%	-0.1%
% *21/*20	-7.7%	+33.6%	+1.3%	-22.8%	-1.4%	+83.7%	-22.2%	+5.1%	-35.2%	-1.1%	-6.6%	-0.3%	+83.6%	-23.4%	+19.9%	+33.9%	+26.3%		-2.2%	-1.7%	+12.0%	+9.7%	+60.5%	+2.6%	-33.3%	-10.7%	-16.3%	+2.1%
Jan-May 20	121	0	2	0	129	1	26	4	37	499	17	248	0	4	2	0	1	-	558	24	16	17	3	5	0	0	1	1 716
Jan-May 21	115	0	2	0	128	2	20	4	22	496	17	248	0	3	3	0	1	-	550	24	19	18	6	5	0	0	1	1 686
% Chg	-5.0%	+38.7%	+2.8%	-25.0%	-0.8%	Δ	-22.2%	+6.4%	-39.8%	-0.6%	-2.9%	+0.3%	+71.4%	-23.5%	+28.0%	+40.0%	+58.7%		-1.4%	-2.3%	+17.9%	+6.2%	Δ	+3.5%	-32.8%		-17.5%	-1.8%
Young cattle	BE	BG	CZ	DK	DE	EE	IE	EL	ES	FR	HR	IT	CY	LV	LT	LU	HU	MT	NL	AT	PL	PT	RO	SI	SK	FI	SE	EU
2017	11	4	2	144	39	1	8	42	999	83	3	68	4	4	1	1	3	0	142	-	4	83	54	3	0	2	11	1 716
2018	9	3	2	156	17	1	11	41	972	77	3	51	4	4	1	1	3	0	159	-	4	83	50	3	0	2	12	1 727
2019	9	2	2	147	17	2	21	36	886	75	3	48	4	3	1	1	3	0	161	-	4	85	44	3	0	1	12	1 668
2020	8	3	2	147	15	1	2	40	851	75	3	45	4	3	1	1	3	0	152	19	4	95	38	3	1	1	11	1 662
* 2021	9	2	2	157	18	1	12	41	822	80	4	46	3	3	1	1	4	0	149	27	5	99	41	4	1	1	9	1 756
% 18/17	-20.9%	-27.9%	+12.6%	+8.5%	-56.4%	-3.4%	+42.9%	-3.9%	-2.7%	-7.0%	-3.0%	-24.9%	-7.3%	-14.0%	-5.9%	+7.5%	-5.8%	+33.3%	+11.8%		+0.0%	-0.2%	-7.3%	+2.9%	-3.6%	-5.2%	+7.2%	+0.6%
% 19/18	-1.2%	-26.6%	-10.3%	-5.8%		+25.2%	+90.9%	-10.8%	-8.8%	-2.6%	-9.4%	-6.7%	-2.9%	-5.3%	+14.2%	+33.3%	+10.2%	-37.5%	+0.9%		+7.1%	+2.9%	-12.0%	-1.1%	+77.5%	-9.1%	-3.5%	-3.4%
% *20/19	-5.6%	+37.7%	-1.9%	+0.1%	-11.8%	-31.3%	-91.1%	+9.3%	-4.0%	+0.7%	-3.4%	-5.5%	+17.0%	-8.3%	-41.4%	+14.5%	+4.9%	+40.0%	-5.4%		+13.8%	+12.0%	-13.4%	+3.6%	+51.6%	-23.5%	-9.5%	-0.4%
% *21/*20	+3.7%	-18.6%	+7.3%	+6.7%	+19.2%	-45.9%	Δ	+3.0%	-3.3%	+5.4%	+28.3%	+1.9%	-37.5%	-4.6%	-24.3%	+6.8%	+8.3%	+100.0%	-2.2%	+42.2%	+14.2%	+4.0%	+7.7%	+25.1%	+38.8%	-8.8%	-14.7%	+5.7%
Jan-May 20	4	1	1	57	6	1	1	16	357	30	1	18	2	2	0	0	1	0	60	8	2	38	13	1	0	1	5	627
Jan-May 21	4	1	1	61	8	0	6	17	350	32	2	19	1	1	0	0	1	0	59	8	2	38	15	2	0	0	4	633
% Chg	+5.5%	-35.3%	+10.3%	+6.6%	+33.3%	-49.2%	Δ	+1.8%	-2.2%	+6.9%	+36.4%	+2.5%	-42.1%	-5.2%	-23.5%	+5.1%	+4.1%	Δ	-1.4%	-4.8%	+16.3%	+1.2%	+8.3%	+29.0%	+38.5%	-5.8%	-15.5%	+0.9%

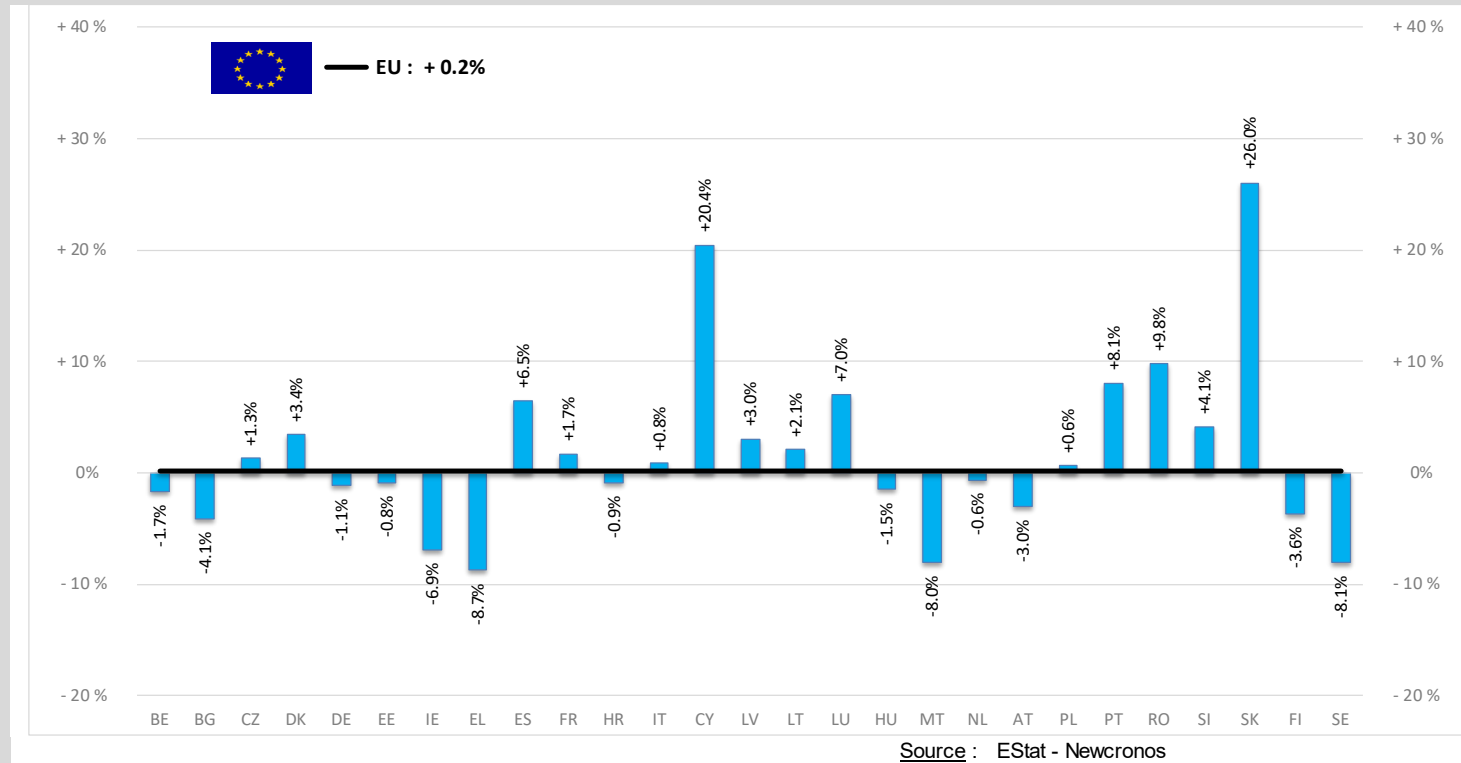
EU Bovine Production



➔ [Production in 1000 Heads](#)

TONNES	Jan-May 21/20
	EU
Bull	-0.7%
Bullock	-2.1%
Cow	+0.9%
Heifer	+1.4%
Calve	+0.4%
Young cattle	-0.6%
Meat of bovine animals	+0.2%

Estimates for last month of period :



EU Bovine Production



Jan-May Missing Countries (TotBov) :

BEEF MEAT PRODUCTION OVERVIEW (Consolidated Figures and *Forecasts by Animal and Country) - 1000 TONNES

Meat of bovine animals	BE	BG	CZ	DK	DE	EE	IE	EL	ES	FR	HR	IT	CY	LV	LT	LU	HU	MT	NL	AT	PL	PT	RO	SI	SK	FI	SE	EU
2017	282	7	68	124	1 124	9	617	44	644	1 442	42	756	8	17	41	10	27	1	439	226	559	91	59	36	8	85	132	6 898
2018	277	7	72	129	1 102	9	623	40	669	1 460	44	809	5	16	40	10	29	1	459	233	565	94	50	35	8	86	137	6 888
2019	264	5	73	125	1 106	9	620	33	695	1 428	45	780	6	15	42	10	30	1	424	230	560	92	44	36	8	87	140	6 702
2020	255	6	73	121	1 090	9	633	35	678	1 435	43	732	5	15	42	10	28	1	433	218	559	98	32	37	8	87	141	6 447
* 2021	250	6	73	125	1 076	9	609	32	708	1 457	42	724	5	15	42	11	27	1	434	209	556	105	33	38	10	84	133	6 420
% 18/17	-1.5%	-2.8%	+5.7%	+4.2%	-2.0%	-4.9%	+0.9%	-10.1%	+3.9%	+1.2%	+3.7%	+7.0%	-36.5%	-5.3%	-1.5%	+3.3%	+7.1%	-2.7%	+4.6%	+3.3%	+1.1%	+2.9%	-15.6%	-2.6%	+4.2%	+1.3%	+3.6%	-0.1%
% 19/18	-4.9%	-24.0%	+1.8%	-3.6%	+0.4%	-0.4%	-15.6%	+3.9%	-2.2%	+3.8%	-3.6%	+6.4%	-6.9%	+5.4%	+3.2%	+2.0%	-5.6%	-7.6%	-1.7%	-0.8%	-1.9%	-12.8%	+2.5%	+1.7%	+0.8%	+2.0%	-2.7%	
% *20/19	-3.5%	+13.7%	-0.5%	-2.7%	-1.4%	+4.0%	+2.2%	+3.7%	-2.5%	+0.4%	-4.5%	-6.1%	-17.3%	-1.8%	-1.6%	+0.4%	-5.6%	+13.7%	+2.0%	-4.9%	-0.2%	+6.2%	-26.1%	+2.2%	-4.0%	-0.8%	+1.0%	-3.8%
% *21/*20	-1.6%	+1.0%	+1.3%	+3.0%	-1.2%	+0.4%	-3.9%	-7.2%	+4.5%	+1.6%	-2.7%	-1.2%	+10.8%	+2.5%	+1.0%	+5.3%	-2.7%	-4.4%	+0.2%	-4.3%	-0.7%	+7.5%	+3.5%	+3.8%	+20.4%	-2.4%	-5.5%	-0.4%
Jan-May 20	103	2	30	46	438	4	249	15	265	581	17	296	2	6	17	4	12	1	172	91	225	38	12	14	3	35	58	Jan-May
Jan-May 21	101	2	30	48	433	4	231	13	282	591	17	298	2	6	17	4	11	0	171	88	226	41	13	15	4	34	53	Jan-May
% Chg	-1.7%	-4.1%	+1.3%	+3.4%	-1.1%	-0.8%	-6.9%	-8.7%	+6.5%	+1.7%	-0.9%	+0.8%	+20.4%	+3.0%	+2.1%	+7.0%	-1.5%	-8.0%	-0.6%	-3.0%	+0.6%	+8.1%	+9.8%	+4.1%	+26.0%	-3.6%	-8.1%	#VALUE!

EU Bovine Production



Bull	BE	BG	CZ	DK	DE	EE	IE	EL	ES	FR	HR	IT	CY	LV	LT	LU	HU	MT	NL	AT	PL	PT	RO	SI	SK	FI	SE	EU
2017	75	2	33	26	518	2	84	21	189	375	24	338	2	4	16	4	6	1	33	105	314	37	6	23	4	50	61	2 352
2018	73	2	35	23	502	2	89	17	203	379	25	331	3	3	15	4	7	1	33	108	319	37	8	22	4	50	61	2 354
2019	70	1	37	22	507	2	94	14	235	362	26	315	3	3	16	4	6	1	23	104	326	37	7	22	5	51	62	2 380
2020	70	2	37	20	504	2	68	14	234	363	25	305	2	3	17	4	6	1	27	100	328	38	6	23	5	50	63	2 311
* 2021	68	2	38	19	481	2	55	13	269	380	26	300	3	4	17	4	5	1	26	94	316	40	6	23	5	49	59	2 361
% 18/17	-3.0%	-13.5%	+5.0%	-11.5%	-3.1%	-6.9%	+6.0%	-21.5%	+7.7%	+1.3%	+5.8%	-2.0%	+11.9%	-15.5%	-4.5%	+0.7%	+8.9%	-8.3%	+1.9%	+2.8%	+1.6%	+1.4%	+23.7%	-3.2%	+7.3%	+0.4%	-0.2%	+0.1%
% 19/18	-4.5%	-19.8%	+5.6%	-2.6%	+1.0%	+2.3%	+5.5%	-17.8%	+15.6%	-4.6%	+3.2%	-4.8%	+14.7%	-3.8%	+8.2%	-2.4%	-3.8%	-1.8%	-29.6%	-3.8%	+2.0%	-1.4%	-9.0%	+1.9%	+23.3%	+2.2%	+2.5%	+1.1%
% *20/19	+0.9%	+11.9%	+0.2%	-10.3%	-0.6%	-1.8%	-27.6%	+2.1%	-0.4%	+0.4%	-3.3%	-3.2%	-28.8%	+3.1%	+4.3%	+5.1%	-12.3%	+13.0%	+13.1%	-3.0%	+0.7%	+4.5%	-18.8%	+2.0%	+7.0%	-1.8%	+0.4%	-2.9%
% *21/*20	-2.6%	+30.1%	+1.6%	-6.5%	-4.6%	+3.3%	-19.4%	-8.4%	+14.9%	+4.5%	+3.3%	-1.6%	+23.6%	+4.5%	-1.8%	+2.5%	-6.6%	-4.9%	-0.3%	-6.6%	-3.8%	+4.1%	+1.4%	+0.6%	-8.1%	-3.0%	-5.3%	+2.2%
Jan-May 20	30	1	15	8	205	1	34	6	89	141	10	123	1	1	7	2	2	0	11	42	137	15	2	9	2	21	24	1 000
Jan-May 21	28	1	15	7	193	1	28	5	104	148	10	123	1	1	7	2	2	0	10	39	133	16	2	9	2	20	22	960
% Chg	-4.2%	+27.5%	+1.6%	-7.8%	-5.9%	+4.9%	-18.4%	-10.5%	+17.1%	+4.9%	+5.1%	-0.4%	+38.0%	+3.9%	-3.2%		-2.7%	-7.7%	-3.2%	-6.6%	-2.7%	+5.3%	+1.0%	+0.2%	-10.2%	-3.4%	-7.1%	-4.0%
Bullock	BE	BG	CZ	DK	DE	EE	IE	EL	ES	FR	HR	IT	CY	LV	LT	LU	HU	MT	NL	AT	PL	PT	RO	SI	SK	FI	SE	EU
2017	0	-	0	-	10	0	242	0	2	68	-	2	-	-	-	0	0	-	-	12	-	0	1	0	-	-	12	350
2018	0	-	0	2	10	0	235	0	2	62	-	2	-	-	-	0	0	-	-	13	-	0	1	0	-	-	12	340
2019	0	-	0	2	10	0	226	0	3	56	-	2	-	-	-	0	0	-	-	13	-	0	1	0	-	-	11	339
2020	0	-	0	2	12	0	252	0	3	58	-	1	-	-	-	0	0	-	-	13	-	0	1	0	-	-	11	324
* 2021	0	-	0	2	12	0	248	0	3	62	-	2	-	-	-	0	0	-	-	13	-	1	1	0	-	-	11	297
% 18/17	+87.5%		+37.5%				-2.9%	+6.1%	+2.8%	-8.9%		-33.8%				+8.7%	-50.0%			+11.4%		-10.3%	-25.5%	-5.9%			-3.3%	-2.8%
% 19/18	-0.0%		-13.6%	+37.5%		+50.0%	-3.5%	+34.3%	+40.8%	-9.2%						+12.0%	+4.5%			+0.4%		+11.4%	+48.8%	-12.5%			-4.1%	-0.5%
% *20/19	+20.0%		+15.8%	+4.5%	+20.0%		+11.1%	-19.1%	-17.6%	+3.3%						-7.1%	Δ			-5.2%		+23.1%	-32.8%	+7.1%			+0.8%	-4.3%
% *21/*20	+89.2%		+44.8%	-19.3%	+1.4%		-1.6%	-18.8%	-0.8%	+6.6%						-4.1%	Δ			+1.4%		+20.5%	+20.3%	+34.2%			-2.7%	-8.6%
Jan-May 20	0	-	0	1	5	0	89	0	1	23	-	0	-	-	-	0	0	-	-	5	-	0	0	0	-	-	5	144
Jan-May 21	0	-	0	1	5	0	84	0	1	25	-	1	-	-	-	0	0	-	-	6	-	0	0	0	-	-	5	148
% Chg	Δ		+44.4%	-20.0%			-5.2%	-17.6%	+6.2%	+7.0%		+15.6%				-0.0%	Δ			+3.0%		+29.4%	+32.1%	+40.0%			-3.8%	+2.8%

Meat Market Observatory – Beef and Veal

PRO.EU.BOV

EU Bovine Production



Cow	BE	BG	CZ	DK	DE	EE	IE	EL	ES	FR	HR	IT	CY	LV	LT	LU	HU	MT	NL	AT	PL	PT	RO	SI	SK	FI	SE	EU
2017	138	4	28	54	376	5	117	9	104	594	6	152	1	9	19	3	18	0	167	67	161	21	37	6	3	23	40	2162
2018	140	5	30	55	375	5	121	9	102	610	6	181	1	9	19	3	19	0	161	67	161	22	27	6	4	23	44	2184
2019	131	3	29	53	366	5	111	7	101	597	5	170	1	9	19	4	20	0	134	67	151	21	21	6	3	21	45	2059
2020	129	4	28	52	348	5	117	6	96	603	5	159	1	8	18	3	19	0	151	59	147	21	14	6	2	21	44	1977
2021	129	3	28	55	349	5	125	6	104	599	5	153	1	9	19	3	18	0	152	58	151	24	15	7	3	21	40	1917
% 18/17	+1.0%	+6.3%	+6.2%	+2.2%	-0.3%	-1.9%	+3.6%	-3.9%	-2.2%	+2.6%	-9.8%	+19.0%	-2.4%		+0.8%	+10.3%	+5.5%	+0.0%	-3.7%	+1.3%	-0.0%	+6.2%	-26.8%	+2.7%	+3.2%	+0.4%	+9.9%	+1.0%
% 19/18	-5.9%	-27.7%	-3.0%	-4.7%	-2.4%	-7.8%	-8.8%	-22.7%	-0.5%	-2.0%	-13.3%	-6.3%	-2.4%	-8.9%	+3.0%	+8.8%	+3.6%	-2.9%	-16.4%	-1.2%	-6.3%	-5.0%	-19.7%	+8.3%	-18.9%	-6.2%	+1.4%	-5.7%
% *20/19	-1.5%	+6.3%	-2.4%	-1.3%	-4.9%	+7.8%	+5.5%	-8.7%	-5.1%	+0.9%	-4.4%	-6.2%	-8.3%	-1.4%	-6.0%	-8.3%	-4.8%	+24.2%	+12.0%	-11.5%	-2.6%	+0.5%	-32.7%	+2.7%	-14.4%	-0.8%	-1.3%	-4.0%
% *21/*20	-0.4%	-6.3%	-0.3%	+5.1%	+0.3%	+1.1%	+7.0%	-3.1%	+8.6%	-0.7%	+2.7%	-3.8%	+29.9%	+4.3%	+3.9%	+2.7%	-3.3%	+3.3%	+0.6%	-1.4%	+2.8%	+15.4%	+1.3%	+9.3%	+40.3%	-2.3%	-10.4%	-3.1%
Jan-May 20	51	1	11	20	138	2	42	3	33	247	2	63	0	3	7	1	8	0	61	24	55	8	6	2	1	8	18	936
Jan-May 21	50	1	11	21	141	2	43	3	38	244	2	60	1	4	7	2	8	0	60	25	58	9	6	3	1	8	16	908
% Chg	-0.7%	-9.5%	-0.3%	+6.1%	+2.2%	-1.5%	+2.7%	-0.4%	+13.7%	-0.9%	+7.7%	-4.3%	+42.9%	+5.0%	+7.5%	+7.9%	-3.0%	+0.0%	-1.9%	+3.7%	+4.5%	+19.9%	+10.0%	+10.2%	+54.6%	-4.7%	-14.1%	-2.9%
Heifer	BE	BG	CZ	DK	DE	EE	IE	EL	ES	FR	HR	IT	CY	LV	LT	LU	HU	MT	NL	AT	PL	PT	RO	SI	SK	FI	SE	EU
2017	3	0	6	14	164	1	172	4	92	209	8	160	1	2	6	2	2	0	3	37	80	11	2	5	0	13	17	1015
2018	4	0	6	17	166	1	175	5	109	217	9	202	1	2	6	2	3	0	3	39	82	12	2	5	0	13	18	995
2019	3	0	6	16	176	1	185	4	114	214	10	202	0	2	6	2	3	0	3	40	81	12	2	5	0	14	19	940
2020	3	1	7	15	179	1	194	4	116	219	10	186	0	2	6	2	3	0	3	36	82	13	2	5	0	15	21	871
* 2021	4	1	7	16	187	1	183	5	121	226	8	182	0	2	6	2	3	0	3	34	87	14	2	6	0	15	22	855
% 18/17	+3.9%	-11.1%	+6.1%	+19.3%	+1.2%	-12.9%	+1.6%	+20.2%	+18.3%	+3.9%	+11.4%	+26.9%	-1.9%	-5.9%	-0.2%	-1.5%	+15.7%	+15.4%	-9.6%	+6.0%	+1.8%	+11.5%	+4.9%	-5.1%	-4.2%	+6.3%	+7.2%	-1.9%
% 19/18	-13.7%	+2.5%	+5.6%	-1.8%	+6.0%	+25.0%	+5.7%	-9.7%	+5.4%	-1.5%	+17.1%	-0.1%	-5.9%	-5.8%	+6.7%	+1.0%	+4.0%	+6.7%	-12.9%	+2.5%	-0.4%	-1.0%	-1.3%	+2.8%	-15.2%	+7.7%	+7.1%	-5.6%
% *20/19	-7.3%	+39.0%	+3.4%	-7.3%	+1.7%	+9.1%	+4.9%	-0.9%	+1.5%	+2.3%	-5.2%	-7.7%	-20.8%	-8.0%	-2.3%	+8.0%	+2.3%	-18.8%	+11.4%	-10.9%	+0.8%	+7.3%	-21.8%	+1.3%	-4.2%	+3.5%	+9.3%	-7.3%
% *21/*20	+38.0%	-0.6%	+4.1%	+4.4%	+4.6%	+6.7%	-5.7%	+7.5%	+4.4%	+3.5%	-20.0%	-2.6%	+14.0%	-1.0%	-1.0%	+15.5%	+4.8%	-22.9%	+3.3%	-7.0%	+6.1%	+7.4%	+8.0%	+6.3%	+8.4%	+0.2%	+3.3%	-1.9%
Jan-May 20	1	0	3	6	71	1	81	2	46	89	4	77	0	1	3	1	1	0	1	15	32	5	1	2	0	5	10	485
Jan-May 21	2	0	3	6	75	1	73	2	49	93	3	77	0	1	2	1	1	0	1	14	34	5	1	2	0	5	10	469
% Chg	+50.5%	-10.0%	+4.3%	+7.0%	+5.6%	+8.0%	-9.2%	+9.2%	+7.0%	+3.7%	-22.6%	+0.6%	+29.4%	+1.2%	-0.4%	+17.4%	+6.7%	-16.7%	+1.6%	-4.8%	+7.6%	+7.1%	+19.4%	+8.4%	+12.3%	-2.4%	-0.3%	-3.4%

EU Bovine Production



Calve	BE	BG	CZ	DK	DE	EE	IE	EL	ES	FR	HR	IT	CY	LV	LT	LU	HU	MT	NL	AT	PL	PT	RO	SI	SK	FI	SE	EU
2017	62	0	0	-	48	0	1	2	17	177	4	93	-	0	0	0	0	-	207	6	3	7	2	2	0	0	1	632
2018	59	0	0	-	48	0	1	1	19	173	4	85	0	0	0	0	0	-	230	6	3	7	2	1	0	0	1	632
2019	58	0	0	-	47	0	1	1	23	181	4	84	-	0	0	0	0	-	231	6	2	6	2	1	0	0	0	613
2020	50	0	0	-	47	0	2	1	18	173	3	74	0	0	0	0	0	-	222	6	2	7	1	1	0	0	0	597
* 2021	47	0	0	-	47	0	2	1	11	172	3	80	0	0	0	0	0	-	222	5	2	8	1	1	0	0	0	605
% 18/17	-5.0%	+33.3%	-7.0%			-9.1%	+47.1%	-6.5%	+7.8%	-2.1%	-2.0%	-8.8%		-10.6%	+2.8%		+25.0%		+10.7%	-1.4%	-1.6%	-5.4%	-2.9%	-5.7%		+50.0%	+2.0%	-0.1%
% 19/18	-2.7%	-8.3%	-7.5%		-2.1%	+20.0%	+42.7%	-11.2%	+24.3%	+4.4%	+3.1%	-1.1%		+4.8%	-8.1%	+16.7%	+3.3%		+0.7%	-0.9%	-11.9%	-11.0%	-10.5%	-10.1%	-71.4%	-7.8%	-3.0%	
% *20/19	-13.2%	+27.3%	+0.0%				Δ	+3.9%	-20.9%	-4.2%	-14.3%	-12.2%		+2.3%	-11.8%	+28.6%	-19.4%		-4.1%	+0.2%	-6.7%	+16.2%	-48.6%	+6.0%	-69.6%	-83.3%	-6.4%	-2.6%
% *21/*20	-5.5%	+22.7%	+15.1%		+1.0%		-22.2%	-1.3%	-37.3%	-0.8%	-8.1%	+9.3%	+100.0%	-26.6%	+15.5%	+22.9%	+26.7%		+0.3%	-7.8%	+11.6%	+12.7%	+4.3%	+5.4%	-78.2%		-18.2%	+1.3%
Jan-May 20	21	0	0	-	19	0	2	0	8	73	1	30	-	0	0	0	0	-	86	3	1	2	0	1	0	0	0	273
Jan-May 21	20	0	0	-	19	0	2	0	4	72	1	34	0	0	0	0	0	-	87	2	1	3	0	1	0	0	0	256
% Chg	-3.3%		+15.4%				-22.2%		-42.1%	-0.4%	-2.2%	+16.0%		-28.6%	+23.1%	+25.0%	+66.7%		+0.9%	-9.2%	+17.1%	+8.8%	+27.6%	+5.5%	-79.4%		-21.1%	-6.1%
Young cattle	BE	BG	CZ	DK	DE	EE	IE	EL	ES	FR	HR	IT	CY	LV	LT	LU	HU	MT	NL	AT	PL	PT	RO	SI	SK	FI	SE	EU
2017	2	1	0	31	9	0	1	8	240	21	1	12	4	1	0	0	0	-	28	-	0	15	11	0	0	0	2	389
2018	2	0	0	33	1	0	1	8	235	19	1	9	1	0	0	0	0	-	32	-	0	15	10	0	-	0	2	382
2019	2	0	0	31	-	0	2	7	219	19	0	8	1	0	0	0	0	-	32	-	0	16	10	0	0	0	2	370
2020	2	1	0	32	-	0	0	7	211	19	0	7	1	0	0	0	0	-	31	5	1	18	9	0	0	0	2	369
* 2021	2	0	0	34	-	0	1	8	203	20	1	7	1	0	0	0	1	-	30	6	1	18	9	1	0	0	2	388
% 18/17	-19.9%	-26.9%	+25.9%	+6.1%	-88.9%	-7.1%	+16.5%	-3.4%	-2.2%	-6.6%	-5.7%	-27.8%	-80.5%	-17.5%	-14.3%	+20.0%	-4.7%		+13.8%		-2.0%	+0.3%	-5.8%	+2.3%		+3.8%	+4.7%	-1.6%
% 19/18	-0.6%	-24.5%	-17.6%	-5.2%		+34.6%	+73.9%	-8.4%	-6.9%	-3.5%	-8.0%	-11.4%	-4.9%		+22.2%	+16.7%	+0.0%		+0.5%		+2.1%	+4.0%	-5.8%	-2.3%		-11.1%	-3.5%	-3.3%
% *20/19	-5.0%	+43.2%	-3.6%	+2.6%		-31.4%	-84.5%	+5.6%	-3.5%	+0.5%	+2.2%	-13.6%	+19.5%	-4.3%	-40.9%	+21.4%	+12.2%		-4.4%		+12.2%	+12.8%	-11.7%	+9.3%	-16.7%	-25.0%	-9.7%	-0.2%
% *21/*20	+5.7%	-11.0%	+4.9%	+5.5%		-41.0%	Δ	+2.0%	-3.9%	+5.6%	+19.5%	+5.8%	-35.9%	-0.4%	-7.6%	+2.0%	+28.6%		-2.4%	+41.4%	+2.6%	+4.2%	+8.3%	+17.2%	+83.3%	+2.6%	-12.6%	+5.1%
Jan-May	1	0	0	12	-	0	0	3	88	7	0	3	0	0	0	0	0	-	12	2	0	7	3	0	0	0	1	154
Jan-May 21	1	0	0	13	-	0	1	3	86	8	0	3	0	0	0	0	0	-	12	2	0	7	3	0	0	0	1	147
% Chg	+8.2%	-28.6%	+8.3%	+4.8%		-41.7%	Δ	+2.0%	-3.0%	+7.1%	+21.1%	+11.8%	-41.5%			+26.7%			-3.0%	-5.2%	+4.0%	+1.6%	+9.9%	+18.2%	+50.0%	+12.5%	-13.2%	-4.8%



BOVINE LIVESTOCK (May / June Survey)

May/Jun 1000 Hd	TOTAL LIVESTOCK				%Var 2020 2019	BOVINE < 1 Year				%Var 2020 2019	BOVINE 1-2 Year				%Var 2020 2019	BOVINE >2 Year				%Var 2020 2019
	2017	2018	2019	2020		2017	2018	2019	2020		2017	2018	2019	2020		2017	2018	2019	2020	
BE	2 454	2 450	2 406	2 388	-0.8%	717	710	706	716	+1.4%	500	492	475	471	-0.8%	1 237	1 247	1 226	1 201	-2.0%
BG																				
CZ																				
DK	1 565	1 560	1 512	1 517	+0.3%	527	538	510	517	+1.4%	311	294	292	291	-0.3%	727	729	710	709	-0.1%
DE	12 366	12 093	11 763	11 423	-2.9%	3 723	3 618	3 502	3 410	-2.6%	2 948	2 848	2 788	2 683	-3.8%	5 694	5 627	5 473	5 330	-2.6%
EE																				
IE	7 364	7 349	7 209	7 314	+1.5%	2 131	2 078	2 008	2 117	+5.4%	1 914	1 919	1 861	1 807	-2.9%	3 319	3 351	3 340	3 390	+1.5%
EL																				
ES	6 588	6 725	6 722	6 715	-0.1%	2 480	2 504	2 507	2 488	-0.8%	927	990	978	930	-4.9%	3 181	3 230	3 237	3 297	+1.9%
FR	19 433	18 737	18 470	18 200	-1.5%	5 542	5 125	5 227	5 144	-1.6%	3 523	3 417	3 229	3 249	+0.6%	10 367	10 195	10 014	9 808	-2.1%
HR																				
IT	6 118	6 170	6 016	6 116	+1.7%	1 723	1 757	1 746	1 746	-0.0%	1 472	1 466	1 409	1 458	+3.5%	2 923	2 948	2 861	2 912	+1.8%
CY																				
LV																				
LT																				
LU																				
HU																				
MT																				
NL	4 096	3 897	3 750	3 766	+0.4%	1 602	1 560	1 536	1 558	+1.4%	600	520	460	446	-3.1%	1 893	1 817	1 754	1 762	+0.5%
AT	1 938	1 907	1 873	1 844	-1.5%	620	606	596	588	-1.4%	431	433	425	416	-2.1%	888	869	853	841	-1.4%
PL	6 143	6 201	6 358	6 344	-0.2%	1 721	1 686	1 771	1 729	-2.4%	1 701	1 734	1 768	1 796	+1.6%	2 721	2 781	2 820	2 819	-0.0%
PT	1 722	1 722	1 712	1 751	+2.3%	537	529	524	557	+6.4%	281	274	267	264	-0.9%	904	919	921	929	+0.8%
RO	2 012	2 002	1 963	1 915	-2.4%	454	444	428	418	-2.3%	229	236	230	217	-5.7%	1 329	1 322	1 305	1 280	-1.9%
SI																				
SK																				
FI																				
SE	1 501	1 507	1 466	1 454	-0.8%	472	475	451	462	+2.6%	385	381	380	362	-4.6%	644	651	636	630	-1.0%
EU	73 301	72 320	71 220	70 748	-0.7%	22 250	21 631	21 512	21 451	-0.3%	15 224	15 003	14 559	14 389	-1.2%	35 827	35 687	35 149	34 908	-0.7%

Source : EStat Newcronos

EU %Var is calculated considering only countries available in 2019 AND 2020



COWS LIVESTOCK (May / June Survey)

May/Jun 1000 Hd	TOTAL COWS				%Var 2020 2019	DAIRY COWS				%Var 2020 2019	OTHER COWS				%Var 2020 2019
	2017	2018	2019	2020	2019	2017	2018	2019	2020	2019	2017	2018	2019	2020	2019
BE	970	968	960	954	-0.7%	521	532	536	544	+1.6%	449	435	425	409	-3.6%
BG															
CZ															
DK	665	667	654	653	-0.2%	570	575	567	567	idem	95	91	87	86	-1.1%
DE	4 885	4 830	4 720	4 609	-2.3%	4 214	4 167	4 067	3 969	-2.4%	670	663	653	640	-1.9%
EE															
IE	2 514	2 529	2 505	2 551	+1.9%	1 433	1 481	1 505	1 568	+4.2%	1 081	1 048	1 000	983	-1.6%
EL															
ES	2 832	2 865	2 854	2 927	+2.5%	825	825	815	810	-0.6%	2 007	2 040	2 039	2 117	+3.8%
FR	7 811	7 652	7 546	7 442	-1.4%	3 552	3 512	3 471	3 403	-1.9%	4 259	4 141	4 075	4 039	-0.9%
HR															
IT	2 187	2 192	2 110	2 130	+1.0%	1 907	1 904	1 840	1 844	+0.2%	280	288	270	286	+6.1%
CY															
LV															
LT															
LU															
HU															
MT															
NL	1 753	1 685	1 641	1 651	+0.6%	1 694	1 622	1 578	1 593	+0.9%	59	63	63	58	-6.8%
AT	755	740	726	716	-1.3%	540	538	525	523	-0.4%	215	202	201	193	-3.8%
PL	2 374	2 429	2 461	2 468	+0.3%	2 154	2 233	2 221	2 218	-0.1%	220	196	240	250	+4.2%
PT	747	745	742	757	+1.9%	244	244	238	239	+0.4%	504	501	504	517	+2.7%
RO	1 199	1 197	1 179	1 160	-1.6%	1 184	1 184	1 162	1 145	-1.5%	15	12	17	15	-9.6%
SI															
SK															
FI															
SE	530	534	516	511	-0.9%	322	319	306	302	-1.3%	208	214	210	209	-0.4%
EU	29 221	29 034	28 612	28 529	-0.3%	19 159	19 137	18 831	18 725	-0.6%	10 062	9 896	9 782	9 803	+0.2%

Source: EStat Newcronos

EU %Var is calculated considering only countries available in 2019 AND 2020



BOVINE LIVESTOCK (December Survey)

Dec	TOTAL LIVESTOCK					%Var	BOVINE < 1 Year					%Var	BOVINE 1-2 Year					%Var	BOVINE >2 Year					%Var
	2017	2018	2019	2020	2019	2019	2017	2018	2019	2020	2019	2017	2018	2019	2020	2019	2017	2018	2019	2020	2019			
BE	2 386	2 398	2 373	2 334	-1.6%	700	724	722	711	-1.5%	484	464	464	461	-0.6%	1 202	1 210	1 188	1 163	-2.1%				
BG	553	542	527	589	+11.6%	110	108	100	112	+11.9%	57	59	58	71	+22.0%	386	375	369	406	+9.9%				
CZ	1 366	1 365	1 367	1 340	-2.0%	407	404	411	405	-1.5%	299	304	299	295	-1.2%	660	657	657	640	-2.6%				
DK	1 558	1 530	1 500	1 500	idem	541	534	522	524	+0.4%	294	284	280	279	-0.4%	723	712	698	697	-0.1%				
DE	12 281	11 949	11 640	11 302	-2.9%	3 704	3 584	3 485	3 405	-2.3%	2 904	2 829	2 751	2 639	-4.1%	5 673	5 536	5 403	5 258	-2.7%				
EE	251	252	254	253	-0.3%	70	71	71	72	+1.6%	49	49	50	50	-0.6%	132	132	133	132	-1.1%				
IE	6 674	6 593	6 560	6 529	-0.5%	2 087	2 000	1 962	2 057	+4.8%	1 792	1 790	1 741	1 708	-1.9%	2 795	2 804	2 856	2 765	-3.2%				
EL	556	542	530	539	+1.7%	151	141	157	154	-1.9%	101	96	91	90	-1.1%	303	305	283	295	+4.2%				
ES	6 466	6 511	6 600	6 636	+0.5%	2 492	2 494	2 529	2 541	+0.5%	822	847	857	853	-0.5%	3 151	3 170	3 214	3 242	+0.9%				
FR	18 954	18 613	18 173	17 591	-3.2%	5 271	5 304	5 125	4 865	-5.1%	3 381	3 180	3 183	3 064	-3.8%	10 301	10 129	9 865	9 663	-2.0%				
HR	451	414	420	423	+0.7%	156	153	151	146	-3.3%	100	96	107	111	+3.7%	195	165	162	166	+2.5%				
IT	6 350	6 311	6 377	6 400	+0.4%	1 738	1 703	1 759	1 774	+0.8%	1 501	1 538	1 588	1 595	+0.5%	3 111	3 071	3 030	3 031	+0.0%				
CY	67	71	74	78	+4.8%	23	24	25	25	+3.5%	11	12	12	12	+2.8%	33	35	38	40	+6.2%				
LV	406	395	395	399	+0.9%	108	106	108	112	+3.0%	70	65	65	65	+1.2%	228	225	222	222	-0.2%				
LT	677	654	635	630	-0.8%	180	173	167	169	+1.2%	135	133	132	128	-2.5%	362	348	336	332	-1.1%				
LU	198	194	192	191	-0.7%	50	50	50	50	+0.2%	44	42	41	41	-1.1%	103	103	101	100	-1.1%				
HU	870	885	909	933	+2.6%	243	251	258	266	+3.1%	179	182	193	195	+1.0%	448	451	458	472	+3.1%				
MT	14	14	14	14	+0.1%	4	4	4	4	+5.3%	3	3	3	3	-8.4%	7	7	7	7	+0.9%				
NL	4 030	3 690	3 721	3 691	-0.8%	1 594	1 510	1 528	1 510	-1.2%	575	465	440	465	+5.7%	1 860	1 715	1 752	1 716	-2.1%				
AT	1 943	1 913	1 880	1 855	-1.3%	624	618	605	599	-1.1%	439	428	426	414	-2.8%	881	866	848	842	-0.6%				
PL	6 036	6 183	6 262	6 279	+0.3%	1 713	1 709	1 748	1 735	-0.7%	1 669	1 732	1 757	1 800	+2.5%	2 654	2 742	2 758	2 744	-0.5%				
PT	1 670	1 632	1 675	1 691	+1.0%	515	497	531	526	-1.1%	256	236	240	257	+6.9%	900	899	903	909	+0.6%				
RO	2 011	1 977	1 923	1 894	-1.5%	432	418	400	394	-1.7%	248	241	223	220	-1.3%	1 330	1 318	1 300	1 280	-1.5%				
SI	480	477	483	485	+0.5%	153	153	151	153	+1.3%	128	128	136	133	-1.7%	198	196	197	199	+1.4%				
SK	440	439	432	442	+2.2%	125	123	122	126	+3.0%	84	83	83	87	+4.1%	231	232	227	229	+1.0%				
FI	875	859	841	835	-0.6%	299	296	287	292	+1.5%	213	210	205	199	-2.6%	363	354	349	344	-1.3%				
SE	1 449	1 435	1 405	1 391	-1.0%	474	468	453	464	+2.5%	342	343	339	323	-4.6%	633	625	613	603	-1.6%				
EU	79 010	77 840	77 161	76 245	-1.2%	23 964	23 619	23 431	23 187	-1.0%	16 182	15 838	15 764	15 559	-1.3%	38 863	38 382	37 966	37 499	-1.2%				

Source : EStat Newcronos

EU %Var is calculated considering only countries available in 2019 AND 2020



COWS LIVESTOCK (December Survey)

Dec 1000 Hd	TOTAL COWS				%Var 2020 2019	DAIRY COWS				%Var 2020 2019	OTHER COWS				%Var 2020 2019
	2017	2018	2019	2020		2017	2018	2019	2020		2017	2018	2019	2020	
BE	938	942	939	922	-1.8%	519	529	538	541	+0.6%	419	412	401	381	-5.0%
BG	357	351	343	381	+11.2%	261	244	227	242	+6.8%	97	107	116	139	+20.0%
CZ	571	570	570	560	-1.8%	365	359	361	357	-1.2%	206	212	209	203	-2.9%
DK	664	655	645	646	+0.2%	575	570	563	565	+0.4%	89	85	83	80	-3.6%
DE	4 859	4 751	4 651	4 548	-2.2%	4 199	4 101	4 012	3 921	-2.2%	660	650	640	626	-2.1%
EE	115	116	116	116	-0.4%	86	85	85	84	-0.8%	29	30	31	32	+0.6%
IE	2 362	2 351	2 383	2 379	-0.2%	1 343	1 369	1 426	1 456	+2.1%	1 018	982	957	923	-3.6%
EL	262	269	242	258	+6.6%	97	95	86	86	idem	165	174	156	171	+9.6%
ES	2 822	2 819	2 881	2 909	+1.0%	823	817	813	811	-0.3%	1 998	2 002	2 068	2 099	+1.5%
FR	7 751	7 650	7 505	7 432	-1.0%	3 597	3 554	3 491	3 434	-1.6%	4 154	4 095	4 014	3 998	-0.4%
HR	161	146	142	144	+1.4%	139	136	130	129	-0.8%	22	10	12	15	+25.0%
IT	2 338	2 263	2 237	2 243	+0.3%	2 040	1 939	1 876	1 871	-0.2%	298	324	362	372	+2.8%
CY	30	32	35	37	+4.8%	30	32	35	37	+4.8%	0	0	0	0	
LV	199	196	195	196	+0.6%	150	144	138	136	-1.7%	49	52	56	60	+6.5%
LT	323	312	299	295	-1.4%	273	256	241	233	-3.3%	50	56	58	62	+6.4%
LU	78	78	79	78	-1.2%	52	53	54	54	+0.1%	26	25	25	24	-4.1%
HU	395	403	412	414	+0.5%	244	239	243	226	-7.0%	151	164	169	188	+11.2%
MT	6	6	6	6	+1.1%	6	6	6	6	-1.0%	0	0	0	0	#####
NL	1 723	1 594	1 633	1 612	-1.3%	1 665	1 552	1 590	1 569	-1.3%	58	42	43	43	idem
AT	750	733	720	715	-0.6%	543	533	524	525	+0.1%	207	200	195	191	-2.5%
PL	2 341	2 417	2 406	2 391	-0.6%	2 153	2 214	2 167	2 126	-1.9%	188	203	239	266	+10.9%
PT	728	723	731	739	+1.1%	239	235	234	233	-0.6%	490	487	497	507	+1.9%
RO	1 187	1 173	1 166	1 148	-1.5%	1 175	1 158	1 139	1 122	-1.5%	12	15	27	26	-3.0%
SI	169	166	166	167	+0.6%	109	103	101	99	-1.8%	60	64	65	68	+4.3%
SK	195	195	192	191	-0.3%	130	128	126	122	-3.2%	65	67	66	69	+5.3%
FI	329	322	318	316	-0.6%	271	264	259	256	-1.3%	58	58	59	61	+2.3%
SE	522	514	500	499	-0.2%	323	313	301	304	+1.0%	199	201	198	194	-2.1%
EU	32 176	31 749	31 513	31 344	-0.5%	21 409	21 029	20 766	20 545	-1.1%	10 767	10 719	10 748	10 796	+0.4%

Source : EStat Newcronos

EU %Var is calculated considering only countries available in 2019 AND 2020