



➔ Live Animal Prices

Last update : 11.04.2024

Prices not received : EL, PL

Semaine / Week : 14
 du / from : 01.04.24
 au / to : 07.04.24

PRIX DE MARCHÉ NATIONAUX et COMMUNAUTAIRES UE (en Euro & en % du prix de référence)
 NATIONAL and COMMUNITY EU MARKET PRICES (in Euro & as % of the reference price)

(Euro/100 kg PC/DW)	YOUNG MALE BOVINES 12>24 m - CATEGORIE A						BULLOCKS - CATEGORIE C						YOUNG BOVINES 8>12 m - CATEGORIE Z						CATEGORIE A/C/Z																	
	U2+U3		R2+R3		O2+O3		U+R+O		Change on last week		%		U2+U3+U4		R3+R4		O3		U+R+O		Change on last week		%		R3		% of ref. price		Change on last week		%					
	U	R	O	URO			U	R	O	URO			U	R	O	URO			U	R	O	URO			R3											
Prix moyens	506.52	497.78		499.90	+ 2.57	+0.5%	405.39	527.54	539.26	530.92	+ 2.53	+0.5%	525.86	521.84		505.88	+ 0.66	+0.1%	504.81	226.98	+ 2.14	+0.4%														
Average prices	506.52	497.78		499.90	+ 2.57	+0.5%	405.39	527.54	539.26	530.92	+ 2.53	+0.5%	525.86	521.84		505.88	+ 0.66	+0.1%	504.81	226.98	+ 2.14	+0.4%														
BE	467.71	437.94		463.83	+ 0.97	+ 0.2%													463.83		+ 0.97	0.2%														
BG		454.47		454.47		<i>idem</i>													454.47																	
CZ	c	454.19	c	c									c	c	c			c																		
DK		417.39	397.87	405.79	- 1.83	- 0.4%							441.32	457.97	453.33	+ 2.78	0.6%					439.84		+ 1.47	0.3%											
DE	469.68	483.99		476.67	- 1.90	- 0.4%							456.20		456.20							476.38		- 2.19	- 0.5%											
EE		c		c									c		c							c														
IE							509.40	526.27	548.31	536.20	+ 2.32	0.4%											536.20		+ 2.32	0.4%										
EL		441.34	467.28	453.20	<i>idem</i>	<i>idem</i>							475.19	500.93	490.94							471.46														
ES	520.04	536.43		525.81	+ 1.00	+ 0.2%							522.73	540.27	500.93	533.40	+ 2.06	0.4%					529.87		+ 1.57	0.3%										
FR	525.75	528.75	503.76	523.41	- 2.93	- 0.6%		537.00		504.64	+ 3.58	0.7%							520.50		- 1.92	- 0.4%														
HR	497.71	510.79		507.64	- 7.97	- 1.5%												501.57	507.38		- 7.63	- 1.5%														
IT	551.11	496.24	463.73	542.31	+ 25.58	+ 4.9%							595.60	532.84	575.43	566.93	- 14.25	- 2.5%					543.55		+ 23.57	4.5%										
CY					<i>idem</i>	<i>idem</i>																														
LV		439.40		439.40	+ 14.00	+ 3.3%							256.74		256.74	- 112.83	- 30.5%					401.87		- 12.07	- 2.9%											
LT		412.21	411.35	411.62	- 0.01	- 0.0%							c		c							c														
LU	c	c		c																			c													
HU		204.35		204.35	+ 1.33	+ 0.7%																	204.35		+ 1.33	0.7%										
MT																																				
NL		296.77	135.92	215.61	- 86.84	- 28.7%							466.72	438.93	443.68	+ 10.82	2.5%					391.27		- 11.62	- 2.9%											
AT	467.63	478.98		471.37	- 2.15	- 0.5%							558.74	539.12	550.73	+ 0.25	0.0%					477.43		- 1.97	- 0.4%											
PL		487.37	497.43	494.08	+ 1.77	+ 0.4%							485.12	462.54	468.58	+ 1.68	0.4%					493.87		+ 1.77	0.4%											
PT	508.11	496.18		502.87	+ 3.62	+ 0.7%							469.11	465.87	466.39	- 3.49	- 0.7%					485.59		+ 0.25	0.1%											
RO	434.13	454.88	459.77	457.67	+ 11.44	+ 2.6%							437.05	424.48	426.16	- 20.03	- 4.5%					434.59		- 11.61	- 2.6%											
SI	473.62	492.76	498.30	487.11	- 0.94	- 0.2%							429.49	473.65	441.99	- 2.20	- 0.5%					483.39		- 1.05	- 0.2%											
SK		463.46	c	c											c	c							c													
FI		482.78	475.06	476.73	- 0.10	- 0.0%																	476.73		- 0.10	0.0%										
SE		518.82	533.22	527.17	- 12.41	- 2.3%							535.30		535.30	- 9.87	- 1.8%					527.65		- 12.26	- 2.3%											

Source : Member States



Meat Market Observatory – Beef and Veal

PRI.EU.BOV

EU Weekly Beef Carcase Prices



11.04.2024
du / from : 01.04.24
au / to : 07.04.24

Prices not received in

PRIX DE MARCHÉ - ETATS MEMBRES
MARKET PRICES - MEMBER STATES

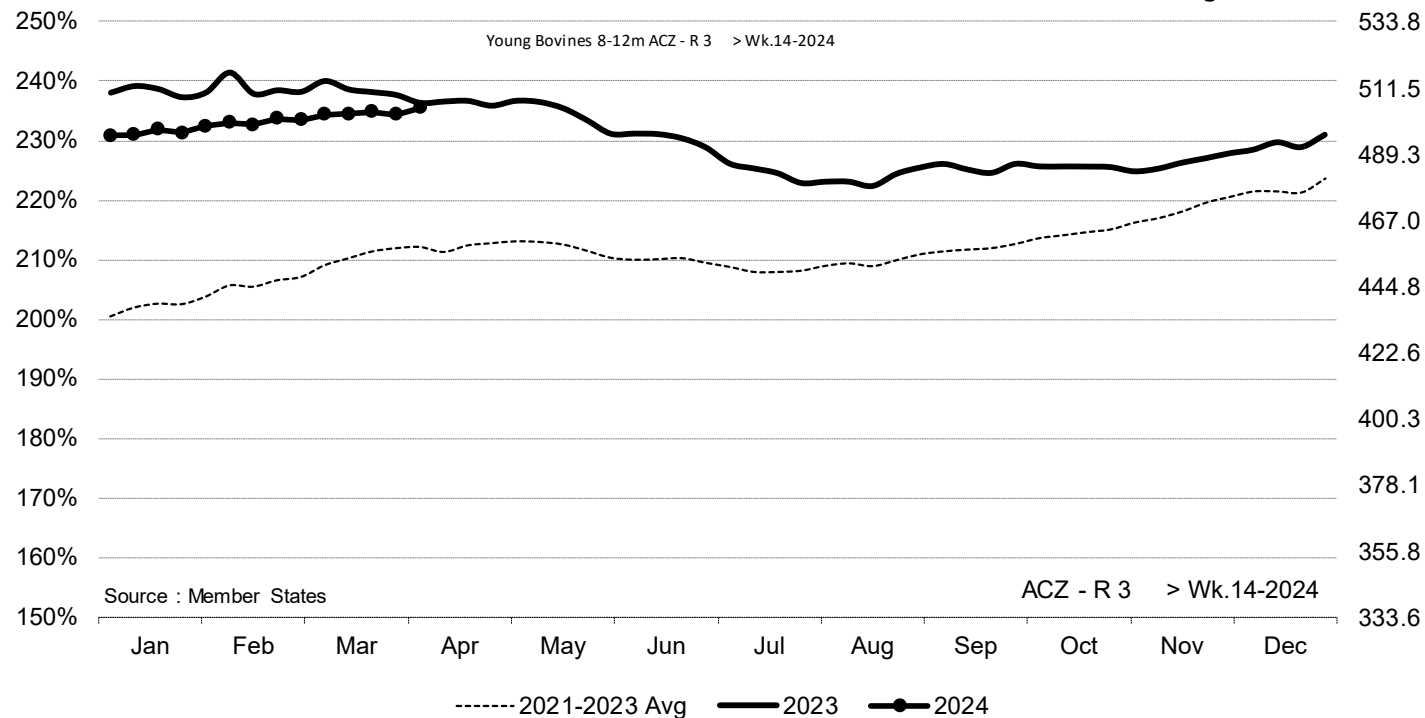
(€/100kg PC/DW)	BE	BG	CZ	DK	DE	EE	IE	EL	ES	FR	HR	IT	CY	LV	LT	LU	HU	MT	NL	AT	PL	PT	RO	SI	SK	FI	SE	EU	Change last week	%	UK														
Young Bovines 8-12m Z-U2					433.6			504.8	552.6										480.0	586.2		507.4					458.9	554.7	+2.44	+0.44%															
Young Bovines 8-12m Z-U3					413.1			510.0	546.2										477.0	587.1		464.6					518.8	544.4	+0.29	+0.05%															
Young Bovines 8-12m Z-R2					444.9	463.0		502.9	482.3	547.8			545.1	261.2	c	c			473.0	545.0	489.0	467.3	445.7	431.0			538.4	524.9	-0.10	-0.02%															
Young Bovines 8-12m Z-R3					443.5			512.1	540.6				500.0	253.2	c				467.0	543.5	491.1	478.7	431.8	471.7			541.1	525.5	+2.53	+0.48%															
Young Bovines 8-12m Z-O2					431.6	465.7		458.0	478.9	473.3			554.0	293.3	c	c			405.0	c	434.3	433.6	395.6	452.8	c		528.7	451.1	-0.64	-0.14%															
Young Bovines 8-12m Z-O3					455.3			436.4	486.9				476.7	362.2	c				432.0	c	464.3	425.0	475.0				564.5	461.9	-10.12	-2.14%															
Young Bovines 8 > 12 m					455.3			436.6	465.1				494.0	480.2	521.3				479.5	577.2		426.6				453.8	448.1	409.9	440.2			535.2	499.3	-1.09	-0.22%										
Young Bulls 12>24m A-U2					495.7	482.6	432.9	495.3	518.4	462.1	555.4	562.0	553.8	585.5	455.7	418.7	c		506.0	491.9	511.5	530.3	451.0	496.3	c	513.1	532.1	537.5	+4.30	+0.81%															
Young Bulls 12>24m A-U3					480.1			427.2	492.5	517.7	440.8	534.7	545.0	510.1	553.1				326.0	491.9	503.4	540.6	467.9	498.2	c	516.4	531.6	519.2	-4.14	-0.79%															
Young Bulls 12>24m A-R2					451.2	516.4	457.0	416.3	489.0	c	504.4	439.1	543.6	538.0	531.2	500.8			362.0	484.0	495.0	496.1	465.4	501.5	469.5	485.3	514.9	501.6	+4.52	+0.91%															
Young Bulls 12>24m A-R3					406.4	409.3	473.4	420.9	487.5		507.1	467.3	538.0	528.0	501.8	510.5			429.2	484.4	486.9	509.2	450.6	490.2	469.0	490.6	525.4	502.8	-3.64	-0.72%															
Young Bulls 12>24m A-O2					410.1	443.5	436.6	378.8	445.2	414.2	488.4	436.1	494.6	480.0	520.6	436.3	450.0			384.7	384.0	c	203.4				463.2	502.1	462.4	+0.66	+0.14%														
Young Bulls 12>24m A-O3					367.5	494.7		378.8	457.6		494.1	452.2	510.9	475.0	423.6	456.5	425.0			404.0	404.0	c	146.9				463.2	510.7	467.4	-2.53	-0.54%														
Young Bulls 12 > 24 m					481.5	463.4		401.6	485.1		506.3	451.1	538.1	535.4	511.5	569.1	449.7	406.3	399.9		187.5	345.8	487.8	482.3	507.1	445.0	493.5	465.2	514.7	506.0	+0.58	+0.11%													
Bulls B R3					368.1	464.6	335.1	424.6	477.3					490.5	427.1				363.2	421.3	c						434.7	495.4	479.2	+9.00	+1.91%														
Bulls					368.1	464.6	335.1	424.6	477.3					490.5	427.1				363.2	421.3	c	461.1	485.7	544.3	345.3	487.1	c	434.7	495.4	479.2	+9.00	+1.91%													
Bullocks C-U2								525.4						516.2	608.0								520.0	405.7			492.1	528.0	-2.23	-0.42%															
Bullocks C-U3								529.3						485.4									523.8				583.5	529.9	+5.35	+1.02%															
Bullocks C-U4								562.2						534.0									508.1	700.0	505.1		583.4	525.9	+1.64	+0.31%															
Bullocks C-R3								520.7						560.0									511.0	420.0	405.5	506.7	525.9	521.7	+5.26	+1.02%															
Bullocks C-R4								523.5						537.0									515.3	400.0	445.7		509.7	520.6	+3.88	+0.75%															
Bullocks C-O3								510.9						458.0										450.0	385.3	471.7	502.9	498.5	+0.70	+0.14%															
Bullocks C-O4								514.3																420.0	416.2		507.8	513.5	+1.09	+0.21%															
Bullocks					c	446.3	502.8	c	517.4					486.7	549.0								c	438.7	413.2	498.1	c	508.5	512.9	+2.59	+0.51%														
Cows D-R3					461.3	375.6	362.6	395.7	417.8		c	461.7	286.0	373.2	546.0	428.8	413.5						374.8	c	c	195.4		325.0	396.2	436.1	351.7	393.8	299.7	c	333.8	493.4	487.7	+2.78	+0.57%						
Cows D-R4					443.3	380.3	384.8	419.0			c	458.7	424.9	540.0									420.0					369.9	388.5	c	187.8		359.0	406.2	436.4	283.7	384.1	347.4	c	340.4	473.8	435.0	-0.80	-0.18%	
Cows D-O2					382.6	388.8	336.9	358.8	393.5		c	422.0	292.3	341.6	482.0	402.3	361.7							342.2	348.5				394.0	356.6	394.7	288.1	391.2	282.9	250.6	311.5	468.5	382.7	+0.74	+0.19%					
Cows D-O3					399.9	375.1	336.4	376.1	403.3		c	421.3	285.2	352.9	452.0	378.2								346.0	373.9	c	186.8		422.0	370.0	415.7	300.3	398.1	310.5			321.7	474.8	409.1	+0.53	+0.13%				
Cows D-O4					410.0	363.4	337.1	377.3	406.7		c	420.3		467.7	433.0									387.1				362.1	359.3	c	189.0		443.0	367.1	420.3	270.2	386.9	343.7	c	290.5	453.2	411.3	-0.69	-0.17%	
Cows D-P2					324.7	343.3	249.6	325.7	334.9		c	382.2	248.6	318.1	396.0									321.3	256.0			284.7	292.0	c	152.5		344.0	325.7	359.1	265.5	388.1	266.4	189.5	294.8	416.1	342.4	+4.32	+1.28%	
Cows D-P3					355.1	339.1	198.6	357.7	344.2		c	404.3	246.9	340.4	418.0	450.0	355.7	260.0						271.2	293.4				252.5	375.0	334.6	375.6	234.7	370.5	305.3	c	303.2	450.4	392.1	+1.95	+0.50%				
Cows					365.2	366.8	310.6	355.5	391.1		c	413.3	282.3	355.5	466.4	409.4	352.2	257.2	335.9				c	303.7	390.8	294.7	c	303.7	457.7	386.6	+1.71	+0.44%													
Heifers E-U2					552.1			429.3	463.5					537.5	558.3								597.8					479.3	507.8	520.1	444.8	446.7	c	498.8	498.0	577.1	+2.23	+0.39%							
Heifers E-U3					516.2			462.4	455.9					539.5	519.0	594.0							522.0	603.8				486.3	508.1	543.7	384.7	492.1	c	512.4	524.1	553.4	-6.22	-1.11%							
Heifers E-U4								433.2	451.6					537.4									522.0	665.1				480.2	509.4			449.3	502.8		541.6	489.8	+0.68	+0.14%							
Heifers E-R2					500.3	375.9		434.4	450.4		c	520.5	455.2	504.6	551.0	512.1	594.7						367.3	371.1	c	204.0		283.0	459.9	490.4	509.4	509.4	534.6	c	478.3	503.3	502.3	+8.67	+1.76%						
Heifers E-R3					480.1	375.9	369.2	441.9	448.4		c	525.7	526.5	550.0	513.9	577.4							369.0	399.6				182.2	226.0	474.7	502.2	518.5	467.4	468.4	c	476.8	518.2	512.4	+2.23	+0.44%					
Heifers E-R4					431.1	373.8	437.8	449.0			c	528.2	554.4	533.0	514.0	530.9							347.1	391.7				183.8	194.0	465.5	499.7	456.7	431.9	505.1	c	430.3	523.4	507.8	+						



ACZ - R 3 > Wk.14-2024

% of Reference Price

€/100 kg cwe

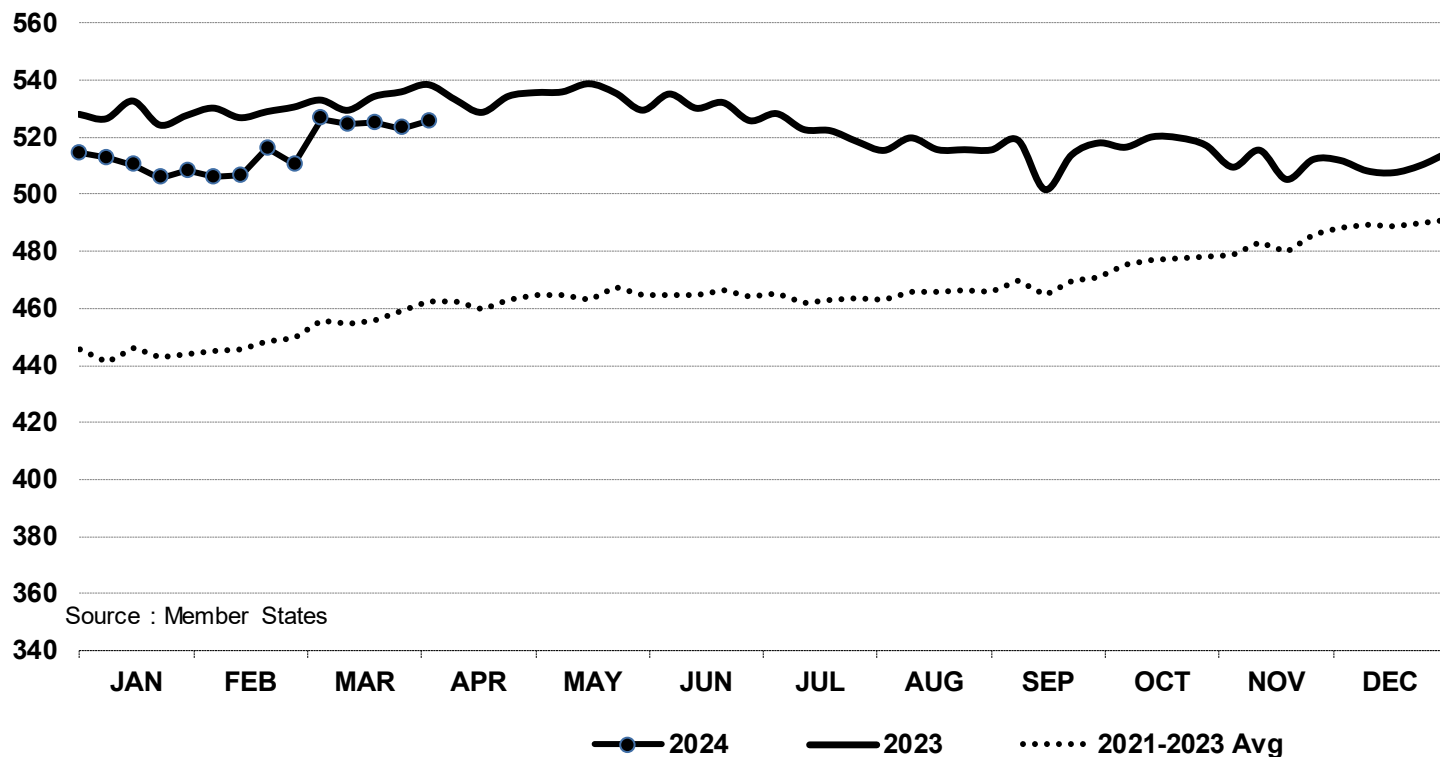


Price in week 14 : **504.81**
 % change y/y : **- 0.37%**
 % Ref. Price in wk 0 : **227.8%**

Average price in March 2024 : **502.72**
 % change y/y : **- 1.67%**



In € / 100 kg Young Bovines 8-12m Z - R 3 > Wk.14-2024

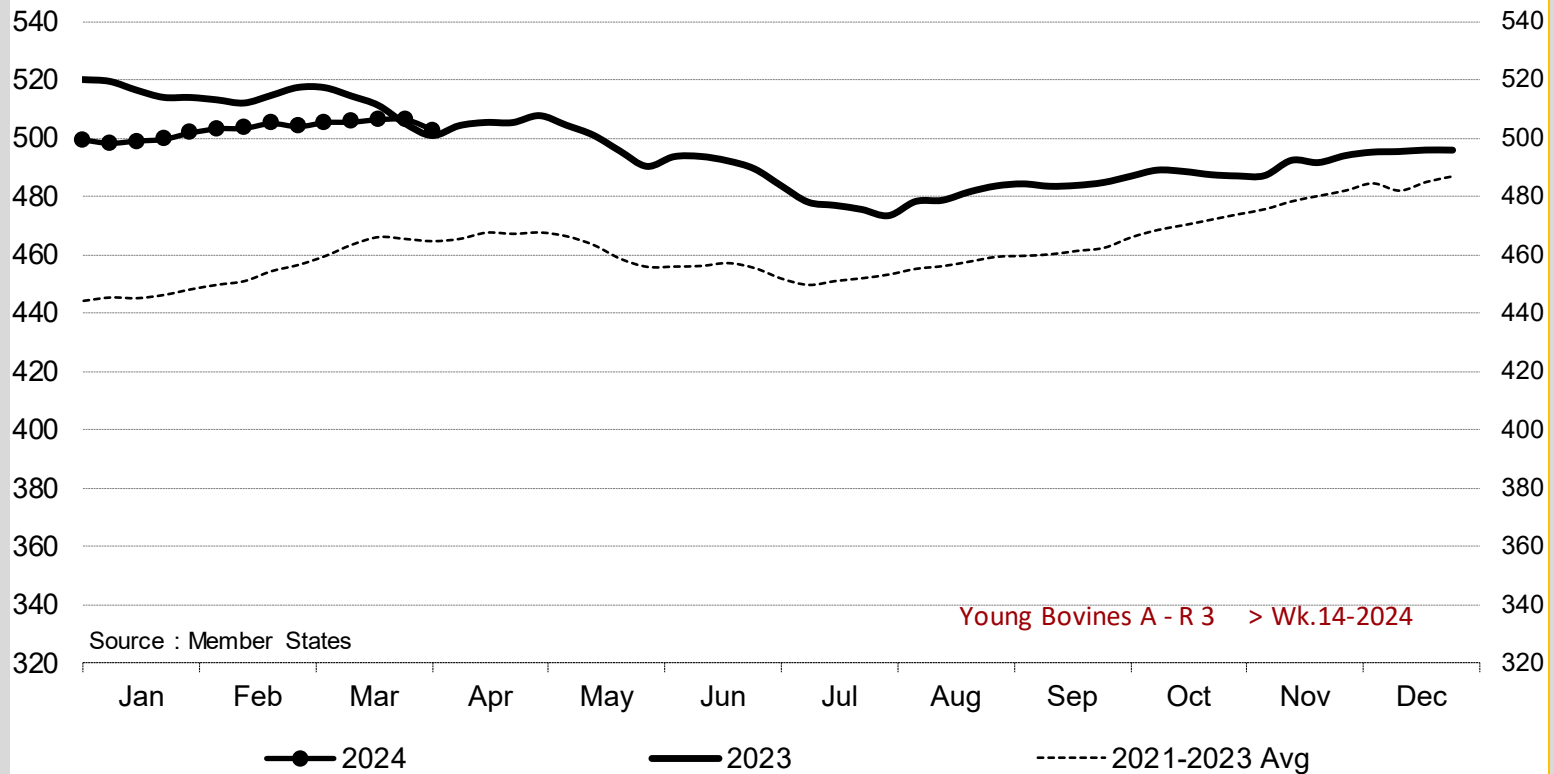


Source : Member States

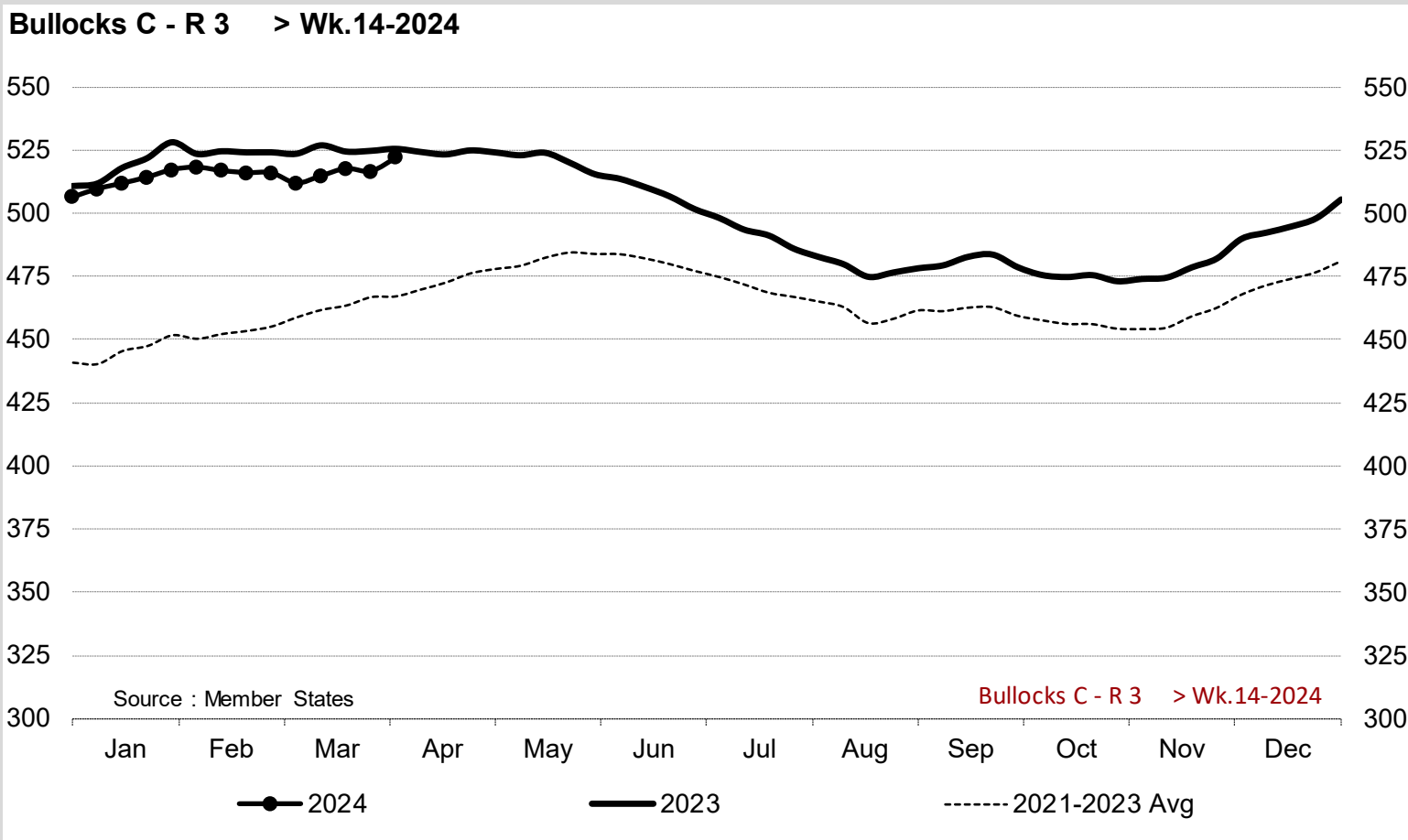
Price in week 14 : **525.52** 07/03/2024 Average price in March 2024 : **523.36**
 % change y/y : **- 2.4%** % change y/y : **- 1.7%**



Young Bovines A - R 3 > Wk.14-2024



Price in week 14 : **502.85** Average price in March 2024 : **505.83**
 % change y/y : **+ 0.4%** % change y/y : **- 1.5%**

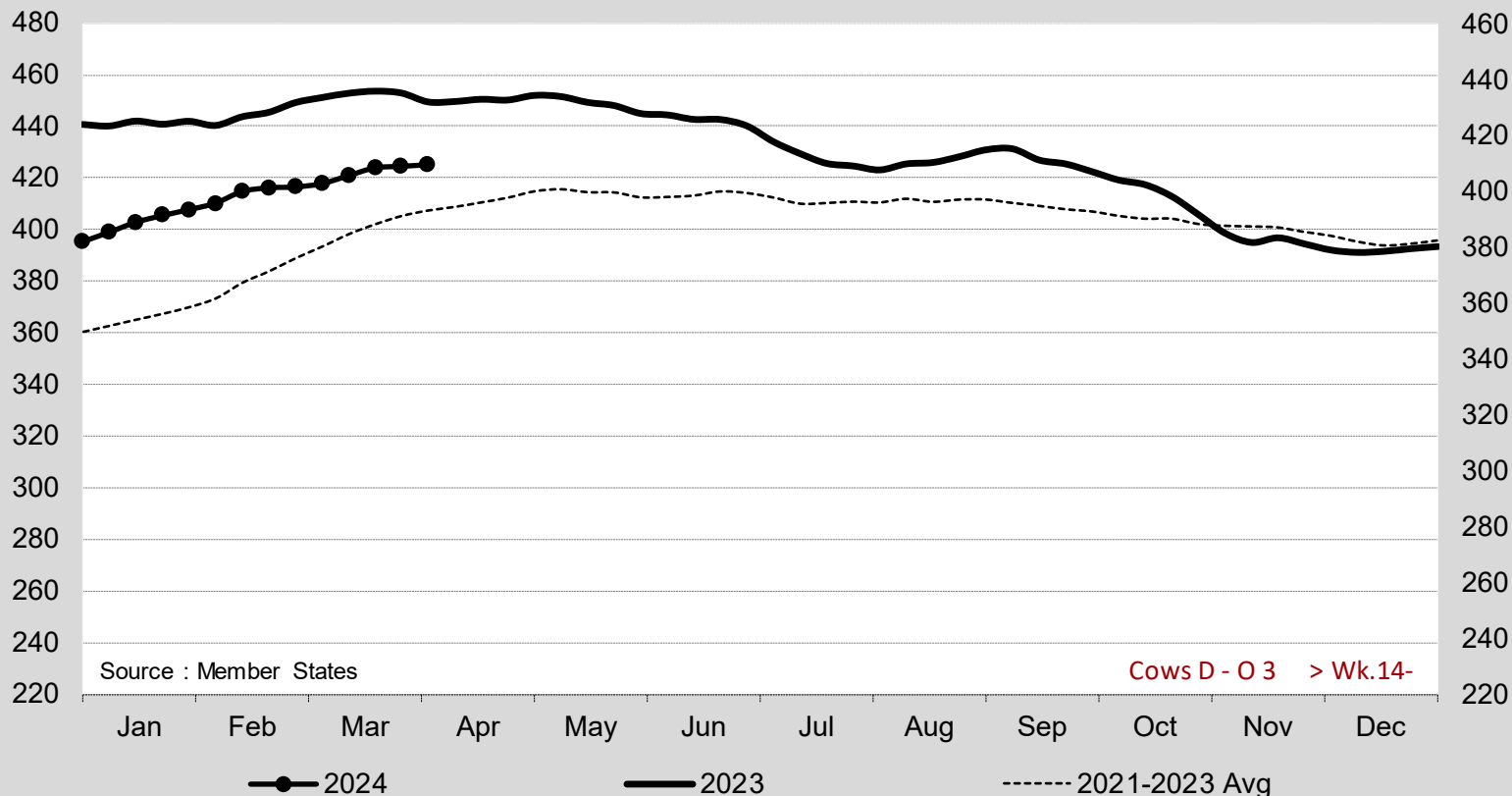


Price in week 14 : **521.71**
 % change y/y : **- 0.7%**

Average price in March 2024 : **515.15**
 % change y/y : **- 1.8%**



Cows D - O 3 > Wk.14-2024



Source : Member States

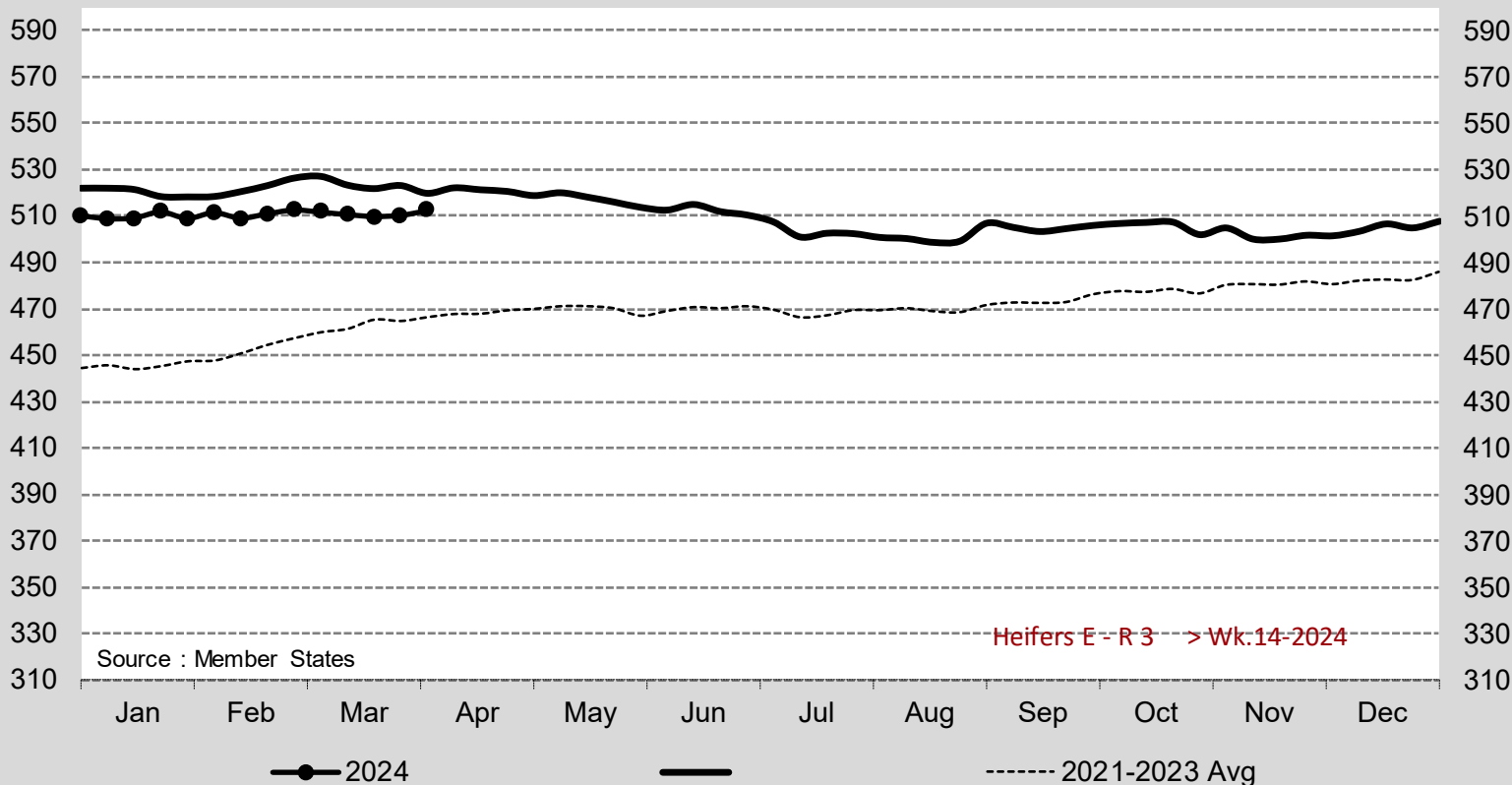
Cows D - O 3 > Wk.14-

Price in week 14 : **409.08**
 % change y/y : **- 5.2%**

Average price in March 2024 : **405.58**
 % change y/y : **- 6.6%**



Heifers E - R 3 > Wk.14-2024



Source : Member States

Heifers E - R 3 > Wk.14-2024

Price in week 14 : **512.39**
 % change y/y : **- 1.4%**

Average price in March 2024 : **510.72**
 % change y/y : **- 2.6%**

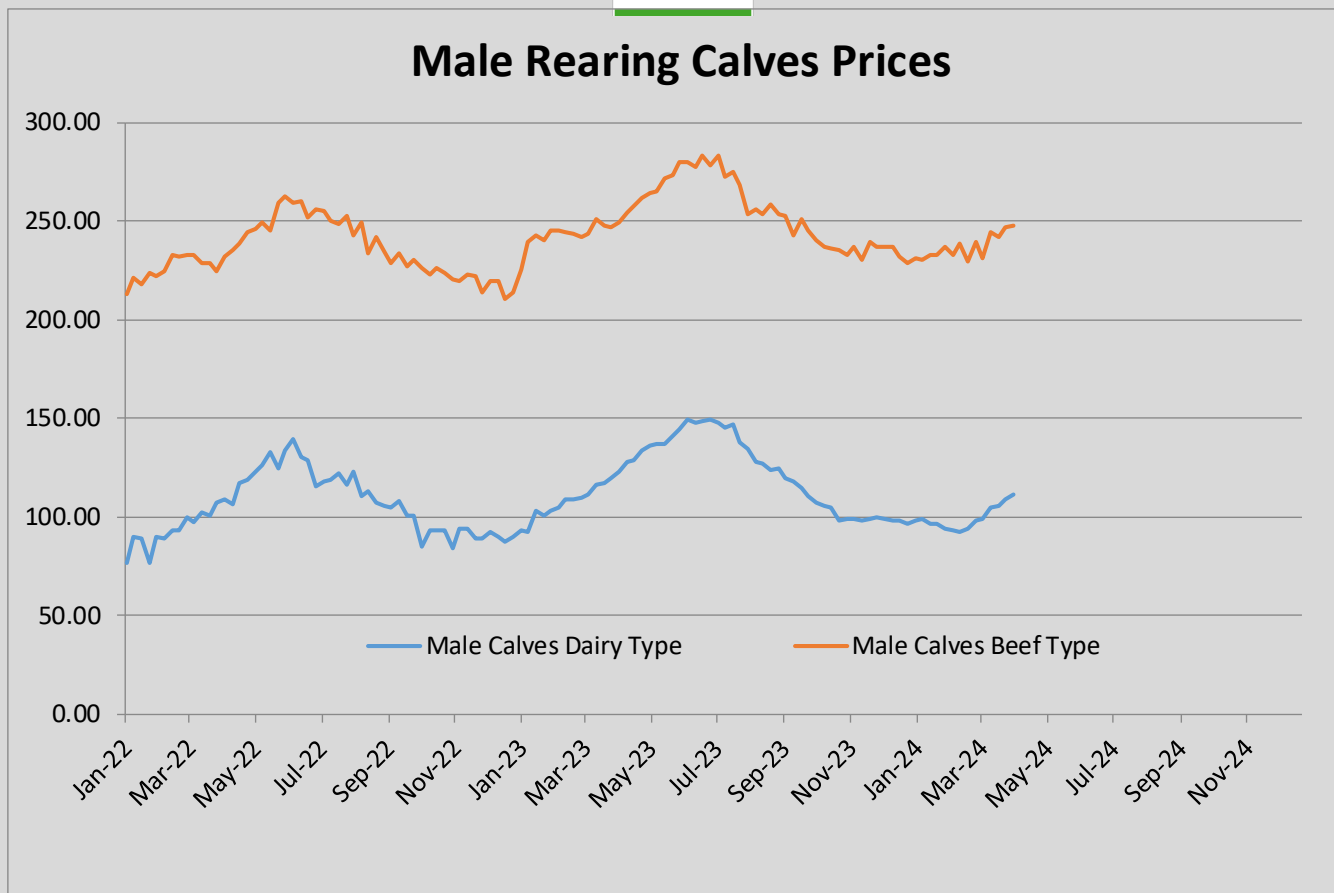


European Commission
E3 - Animal Products

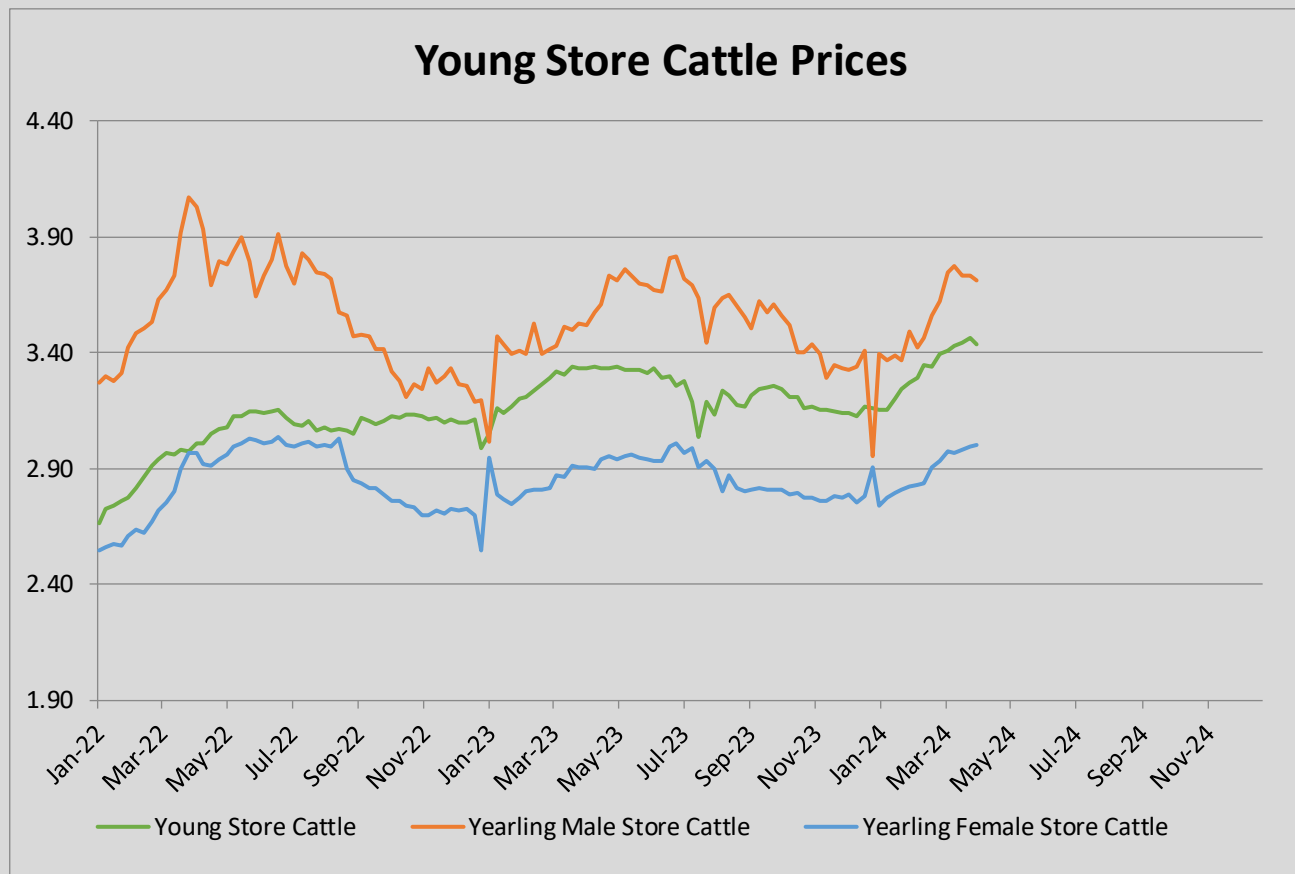
Week 14 from 01/04/2024
to 07/04/2024

Prices of Live Bovine Animals

Male Calves aged between 8 days and 4 weeks															
	BE	DK	DE	IE	ES	FR	IT	NL	AT	PL	PT	RO	SI	SE	EU
Male Calves Dairy type															
Market Price € / head	73.42	100.56	114.45	84.39	105.94	95.50	129.22	88.00	121.50	198.00		45.25			111.15
Previous week market price	71.75	97.21	110.36	76.42	105.94	93.68	126.18	88.00	129.24	197.29		51.52			109.31
Difference with previous week	-1.67	3.35	4.09	7.97	0.00	1.82	3.04	0.00	-7.74	0.71		-6.27			1.84
% of EU average	66	90	103	76	95	86	116	79	109	178		41			
Coefficient	3.10	3.17	21.70	8.60	4.61	18.40	10.62	8.94	3.14	11.60		6.13			100
Male Calves Beef type															
Market Price € / head	348.89		214.40	172.45	213.21	260.63	243.34	185.00	385.12	305.32		370.02			247.89
Previous week market price	322.78		214.20	159.78	213.30	260.88	238.79	185.00	385.79	304.22		408.25			247.00
Difference with previous week	-26.11		0.20	12.67	-0.09	-0.25	4.55	0.00	-0.67	1.09		-38.23			0.89
% of EU average	141		86	70	86	105	98	75	155	123		149			
Coefficient	3.57		17.29	9.28	11.30	27.46	9.18	6.31	2.77	8.49		4.35			100
Store Cattle															
	BE	DK	DE	IE	ES	FR	IT	NL	AT	PL	PT	RO	SI	SE	EU
Young Store Cattle															
Market Price € / kg	5.07			2.90	3.58	3.64	3.59		2.85			3.32		2.28	3.44
Previous week market price	5.33			2.91	3.56	3.62	3.57		2.60			3.35		2.79	3.46
Difference with previous week	0.26			-0.01	0.02	0.02	0.02		0.05			-0.03		-0.51	-0.03
% of EU average	147			84	104	106	104		83			97		66	
Coefficient	5.45			20.34	7.69	44.62	7.21		5.73			4.37		4.59	100
Yearling Male Store Cattle															
Market Price € / kg	4.72		5.35	2.60		3.28	3.89		2.53		3.15			2.40	3.71
Previous week market price	4.93		5.49	2.58		3.25	3.88		2.53		3.13			2.32	3.73
Difference with previous week	0.21		-0.14	0.02		0.03	0.01		0.00		0.02			0.08	-0.03
% of EU average	127		144	70		88	105		68		85			65	
Coefficient	2.85		25.17	24.15		21.50	16.48		4.92		1.46			3.47	100
Yearling Female Store Cattle															
Market Price € / kg	3.53		3.06	2.65		3.20	2.99		2.51		2.67			2.11	3.00
Previous week market price	3.53		3.00	2.64		3.23	2.97		2.23		3.09			2.27	3.00
Difference with previous week	0.00		0.06	0.01		-0.03	0.02		0.28		-0.42			-0.15	0.01
% of EU average	118		102	88		107	100		84		89			70	
Coefficient	5.14		25.14	14.29		32.54	13.84		3.79		2.18			3.09	100
Calves Slaughtered before 8 months															
	BE	DK	DE	IE	ES	FR	IT	NL	AT	PL	PT	RO	SI	SE	EU
Market Price € / 100 kg	710.15		572.00			710.90	541.00	577.95			464.73		457.24		618.34
Previous week market price	710.15		568.00			713.50	587.37	577.95			478.98		452.73		626.37
Difference with previous week	0.00		4.00			-2.60	-46.37	0.00			-14.25		4.51		-8.03
% of EU average	115		93			115	87	93			75		74		
Coefficient	7.99		7.91			28.82	15.97	37.45			1.48		0.37		100



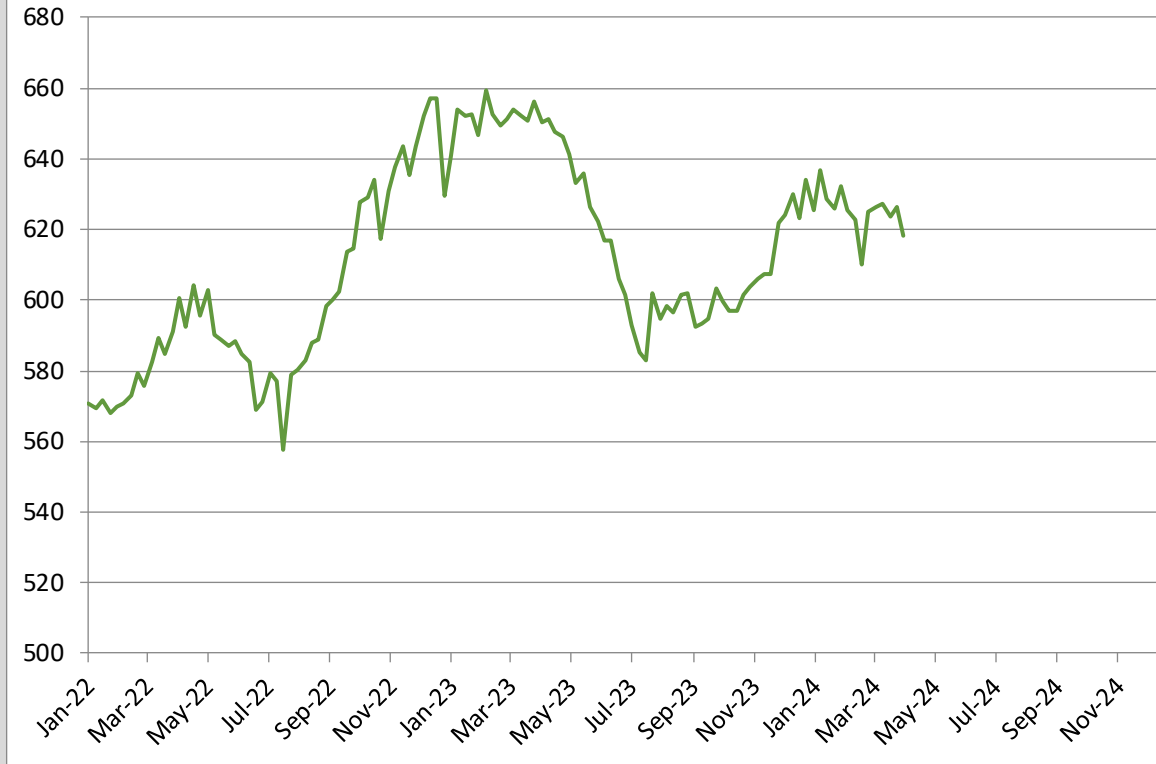
Male Rearing Calves Beef type		Male Rearing Calves Dairy type	
Price in Week 14	247.89	Price in Week 14	111.15
Change y/y	-0.7%	Change y/y	-9.8%



Young Store Cattle Price in	Week 14	3.44	Yearling Male Store Cattle Price	3.71
	Change y/y	+3.1%	Change y/y	+5.5%
Yearling Female Store Cattle Price		3.00		
	Change y/y	+3.3%		



Calves Slaughtered before the Age of 8 Months



Price in Week 14 **618.34 € / 100 kg of carcasse weight**
Change y/y -4.9%