



➔ Live Animal Prices

Last update : 25.07.2024

Prices not received : EL, MT

Semaine / Week : 29
 du / from : 15.07.24
 au / to : 21.07.24

PRIX DE MARCHÉ NATIONAUX et COMMUNAUTAIRES UE (en Euro & en % du prix de référence)
NATIONAL and COMMUNITY EU MARKET PRICES (in Euro & as % of the reference price)

(Euro/100 kg PC/DW)	YOUNG MALE BOVINES 12>24 m - CATEGORIE A						BULLOCKS - CATEGORIE C						YOUNG BOVINES 8 >12 m - CATEGORIE Z						CATEGORIE A/C/Z			
	U2+U3	R2+R3	O2+O3	U+R+O	Change on last week	%	U2+U3+U4	R3+R4	O3	U+R+O	Change on last week	%	U2+U3	R2+R3	O2+O3	U+R+O	Change on last week	%	R3	% of ref. price	Change on last week	%
	U	R	O	URO			U	R	O	URO			U	R	O	URO			R3			
Average prices	503.48	497.10		496.55	- 3.16	-0.63%	389.23	512.72	525.92	518.59	- 4.60	-0.88%	526.38	520.83		509.39	+ 3.00	+0.6%	501.73	225.60	- 2.10	-0.42%
BE	488.10	441.83		481.96	+ 2.49	+ 0.5%													481.96		+ 2.49	0.5%
BG		509.96		509.96		<i>idem</i>													509.96			
CZ	454.33	457.44	c	c									c	c	c				c			
DK		424.20	409.55	416.03	+ 3.48	+ 0.8%							465.06	479.57	474.95	+ 0.06	0.0%		459.71		+ 0.95	0.2%
DE	478.79	491.60		485.10	- 0.68	- 0.1%													485.10		- 0.68	- 0.1%
EE		c		c									c		c				c			
IE							495.23	510.51	529.18	519.13	- 5.11	- 1.0%							519.13		- 5.11	- 1.0%
EL		434.34	451.91	433.86	<i>idem</i>	<i>idem</i>							489.56	512.85	489.32				461.97			
ES	521.58	523.68		522.26	- 2.86	- 0.5%							524.50	537.26	512.85	532.08	+ 4.33	0.8%	527.34		+ 0.86	0.2%
FR	509.46	513.73	500.28	509.46	- 2.25	- 0.4%	534.48	527.00		515.73	- 1.86	- 0.4%							510.39		- 2.19	- 0.4%
HR	514.75	524.56		522.23	- 7.45	- 1.4%							767.49			767.49			534.03		- 7.09	- 1.3%
IT	531.09	490.12	461.75	524.35	- 9.87	- 1.8%							568.88	558.30	572.15	565.66	- 9.78	- 1.7%	526.96		- 9.87	- 1.8%
CY						<i>idem</i>																
LV		395.01		395.01	+ 21.76	+ 5.8%							367.09			367.09	- 14.61	- 3.8%	389.19		+ 14.18	3.8%
LT		412.58	414.58	413.97	- 10.20	- 2.4%							c		c				c			
LU	c	c		c															c			
HU		320.46		320.46	+ 148.72	+ 86.6%													320.46		+ 148.72	86.6%
MT																						
NL		111.75	78.56	95.32	- 66.45	- 41.1%							456.22	439.10	442.51	+ 7.81	1.8%		355.59		- 10.78	- 2.9%
AT	478.44	488.86		481.93	- 0.36	- 0.1%							551.07	540.45		546.59	+ 13.73	2.6%	486.88		+ 0.72	0.1%
PL		491.46	494.58	493.46	- 0.30	- 0.1%							444.65	466.55	464.00	+ 28.74	6.6%		493.20		- 0.05	0.0%
PT	481.10	501.70		490.16	- 5.42	- 1.1%							477.38	465.88	467.79	- 5.83	- 1.2%		479.60		- 5.61	- 1.2%
RO	441.70	430.83	460.96	450.89	- 18.58	- 4.0%							436.20	441.21	440.47	- 2.52	- 0.6%		443.19		- 6.71	- 1.5%
SI	486.19	494.76	501.14	495.50	- 3.23	- 0.6%							530.94	483.18	509.48	496.03	+ 59.40	13.6%	495.55		+ 2.88	0.6%
SK		c	c	c										c	c				c			
FI		475.45	475.88	475.77	+ 3.71	+ 0.8%													475.77		+ 3.71	0.8%
SE		527.41	547.17	538.65	- 7.31	- 1.3%							562.21			562.21	+ 19.67	3.6%	539.97		- 5.80	- 1.1%

Source : Member States

Page
Next

Agriculture
and Rural
Development

EU Weekly Beef Carcase Prices



25.07.2024

du / from : 15.07.24

au / to : 21.07.24

PRIX DE MARCHÉ - ETATS MEMBRES MARKET PRICES - MEMBER STATES

prices not received in :

(€/100kg PC/DW)	BE	BG	CZ	DK	DE	EE	IE	EL	ES	FR	HR	IT	CY	LV	LT	LU	HU	MT	NL	AT	PL	PT	RO	SI	SK	FI	SE	EU	Change last week	%	UK			
Young Bovines 8-12m Z-U2				460.6			522.0		552.9		812.0	604.6							446.0	567.7		515.7		561.7		c	586.9	554.0	+4.37	+0.80%				
Young Bovines 8-12m Z-U3				434.6			514.3		549.7			566.0							474.0	585.9		475.4					530.2	547.8	+2.11	+0.39%				
Young Bovines 8-12m Z-R2			c	469.5				c	508.6	498.3	536.1		572.6		363.2				454.0	540.3		473.9	420.4	485.2			561.0	520.9	+0.01	+0.00%				
Young Bovines 8-12m Z-R3			c	467.3			510.8		486.8	543.3		516.1		413.2					460.0	555.7	444.6	463.5	487.6	521.7			583.8	527.1	+4.72	+0.90%				
Young Bovines 8-12m Z-O2			c	453.7	410.2		c	484.6	485.4	498.9		542.6		318.2		c	c		396.0	c	448.9	463.4	420.0	487.1		c	552.1	465.5	+14.02	+3.11%				
Young Bovines 8-12m Z-O3				456.0	472.1		c	511.5	491.7	510.0		603.2		353.2					455.0	c	429.0	432.7	426.5	496.7			568.3	483.5	+4.73	+0.99%				
Young Bovines 8 > 12 m			c	458.9	418.7		c	507.4	493.8	530.8		812.0	573.3		335.5				426.1	c	444.7	465.8	423.7	493.1		c	556.9	508.1	+6.24	+1.24%				
Young Bulls 12>24m A-U2	518.2		480.7	430.8	505.5		c	509.1	462.3	547.8	546.0	553.9	563.0			436.2			312.0	502.8	504.7	520.4	435.4	511.8	522.2	503.7	520.1	530.2	-0.21	-0.04%				
Young Bulls 12>24m A-U3	495.0		485.3	430.0	501.2		c	511.1	448.8	551.6	527.0	534.1	545.3						115.0	503.8	498.7	488.2	487.6	510.2		c	510.8	535.2	-4.31	-0.83%				
Young Bulls 12>24m A-R2	454.4		459.4	419.7	497.5	451.6	493.1	440.2	527.1	521.0	538.0	492.4		403.4	411.7		c	325.3	150.0	493.0	501.2	503.5	462.2	498.6	482.6	480.2	522.2	500.5	-5.76	-1.14%				
Young Bulls 12>24m A-R3	414.1	510.0	484.6	429.9	494.0		c	497.7	438.2	530.5	514.0	520.6	510.3		378.2	420.3			60.0	497.1	487.4	511.9	406.8	502.2		c	480.5	535.4	502.2	-3.45	-0.68%			
Young Bulls 12>24m A-O2	411.7	511.3	423.2	385.4	454.8		c	472.8	436.9	496.7	476.0	544.1	427.8	450.0	370.2	392.4		c	224.3	82.0	459.4	469.7	453.8	439.7	479.1	434.1	450.8	515.5	461.8	-1.30	-0.28%			
Young Bulls 12>24m A-O3	374.5	457.0		c	389.8	466.4		c	479.0	420.1	503.6	472.0	547.7	469.2	430.0	377.2	399.9			59.0	452.9	473.4	422.9	438.8	503.5		c	463.8	525.5	471.7	-1.71	-0.36%		
Young Bulls 12 > 24 m	499.0	491.0		c	410.3	494.0		c	495.2	455.4	537.0	521.4	533.0	550.0	449.8	380.0		c	246.1	174.5	498.8	482.8	495.8	439.5	494.8		c	464.4	524.9	504.6	-2.72	-0.54%		
Bulls B R3	468.9		c	318.6	433.4		c	407.5			471.0	505.7	487.8		401.2					c	489.5	535.0	449.7	500.9		c	448.7	483.3	479.1	+1.22	+0.25%			
Bulls	468.9		c	318.6	433.4		c	407.5			471.0	505.7	487.8		401.2					c	489.5	535.0	449.7	500.9		c	448.7	483.3	479.1	+1.22	+0.25%			
Bullocks C-U2				c			513.7					646.6									544.9						283.0	522.4	+3.87	+0.75%				
Bullocks C-U3				c	485.2	547.2		514.8			558.0	653.8									533.0		650.0	445.8			556.3	526.1	-3.12	-0.59%				
Bullocks C-U4							513.1														521.9		500.0	445.8	519.9			527.5	513.4	-3.44	-0.67%			
Bullocks C-R3				c	494.6	506.1		c	506.2		527.0		420.0		448.2						527.6	509.2	500.0	445.8	518.1			488.5	509.7	-6.27	-1.22%			
Bullocks C-R4				c	464.3	549.0		507.8				546.0									518.5		450.0	517.6	521.7			498.3	508.5	-4.37	-0.85%			
Bullocks C-O3				c	467.7	454.0		494.6			476.0	415.0									c	488.8	400.0	486.0	491.7		c	501.5	491.0	-4.41	-0.89%			
Bullocks C-O4				c	466.5		495.6														c		426.7	11.7				483.8	495.0	-5.95	-1.19%			
Bullocks			c	473.5	507.8		c	501.4			501.9	593.9									c	465.7	469.5	503.0		c	497.7	502.7	-4.63	-0.91%				
Cows D-R3	470.0	372.7	389.9	397.8	456.9		c	459.9	230.9	389.0	550.0	397.8	423.5		411.2	390.9				402.0	438.9	454.2	373.3	454.1	356.2		c	327.6	518.1	500.2	-0.25	-0.05%		
Cows D-R4	347.8	400.5	392.3	455.2			c	453.6	449.9	540.0	452.0	502.3			402.2	363.9				402.0	449.1	464.5	372.4	420.2	358.1		c	311.2	500.1	457.5	-3.91	-0.85%		
Cows D-O2	410.5	362.5	361.8	379.3	426.6		c	421.4	250.8	361.9	494.0	420.0	363.7		351.6	339.2				414.0	397.0	423.4	346.6	413.1	318.4	244.6	314.2	483.0	409.5	+1.19	+0.29%			
Cows D-O3	424.1	363.3	362.6	387.4	433.1	388.7	424.6	247.5	368.9	472.0	409.5	411.1		364.8	374.4					436.0	409.5	436.5	346.9	401.9	361.7	262.8	322.3	490.8	431.3	+0.24	+0.06%			
Cows D-O4	429.5		383.3	384.6	438.2		c	425.2	449.0	455.0		430.3		354.0	371.0					463.0	412.4	442.5	356.4	394.3	360.2		c	296.8	476.3	429.1	-1.65	-0.38%		
Cows D-P2	352.2	291.7	277.7	328.7	365.6	316.7	387.7	240.9	318.8	418.0	353.8	332.4	275.0	277.2	297.1					357.0	367.3	383.9	286.4	373.3	303.6	169.8	283.0	434.3	361.3	-4.00	-1.09%			
Cows D-P3	373.6	267.6		c	359.0	374.4	299.8	409.9	241.6	349.7	440.0	368.2	272.0	296.2	304.1					373.0	365.2	389.7	252.6	421.1	351.7		c	296.1	460.3	406.6	-6.36	-1.54%		
Cows	388.8	333.2		c	359.5	423.4		c	415.8	230.9	368.7	481.7	406.4	367.3	274.1	347.6	335.9				412.1	412.6	426.0	332.8	403.2	343.3		c	297.9	477.6	404.8	-1.71	-0.42%	
Heifers E-U2	559.4			c	461.1	481.2		c	520.2		556.9	592.0		582.1							502.2	503.6	522.4	434.9	501.7			493.2	546.3	566.6	-8.61	-1.50%		
Heifers E-U3	522.1			c	458.8	480.7		c	528.5	482.9	550.0	597.0	556.0	606.1		398.2	403.5				505.9	509.4	506.9	460.9	485.8		c	520.7	538.2	563.3	+1.22	+0.22%		
Heifers E-U4			419.3		478.2			529.1				556.0	644.7								487.1	508.0		496.4	489.9			533.8	498.0	-1.86	-0.37%			
Heifers E-R2	506.9	69.0	411.6	465.1	472.2		c	507.2	510.9	539.4	542.0	519.9	570.5		406.2		c	341.4		287.0	480.9	488.1	532.1	432.0	423.7		c	477.8	517.4	510.0	-3.02	-0.59%		
Heifers E-R3	478.9		414.4	454.1	475.8		c	510.3	549.2	554.0	546.7	578.9		408.2	377.4					187.0	492.1	497.9	498.9	450.2	461.5		c	474.6	520.2	520.9	-0.04	-0.01%		
Heifers E-R4				c	430.9	472.6		c	511.8	510.1	538.0	549.4	553.9		404.0						220.0	481.5	494.0	506.3	435.7	471.2			478.8	509.4	501.8	-5.01	-0.99%	
Heifers E-O2	401.2	232.5	370.4	389.9	415.3		c	482.3	470.9	456.1		418.5	404.2		338.6	337.9				312.0	406.8	448.4	476.6	438.4	297.1									

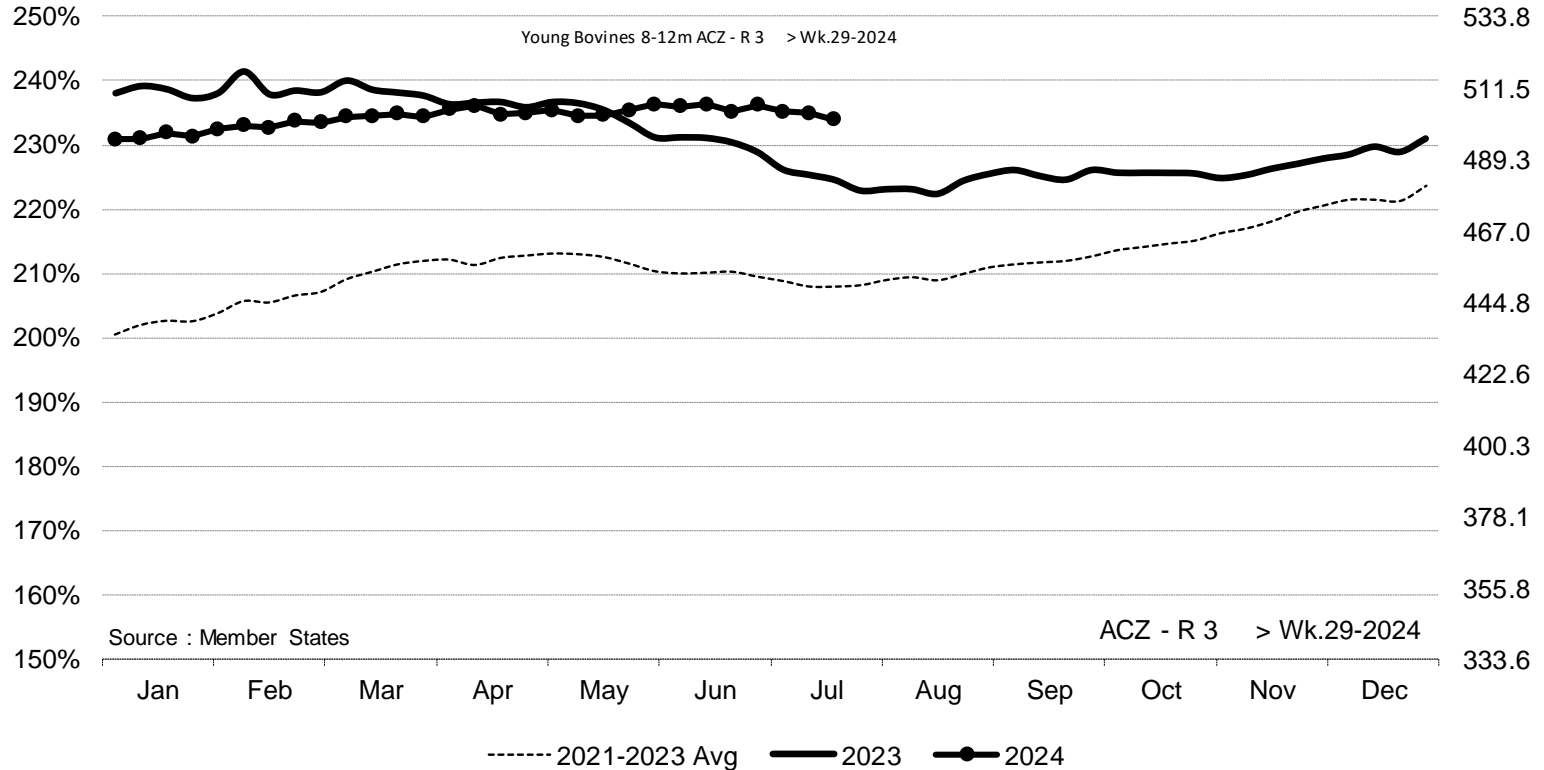
EU Weekly Beef Carcase Prices



ACZ - R 3 > Wk.29-2024

% of Reference Price

€/100 kg cwe

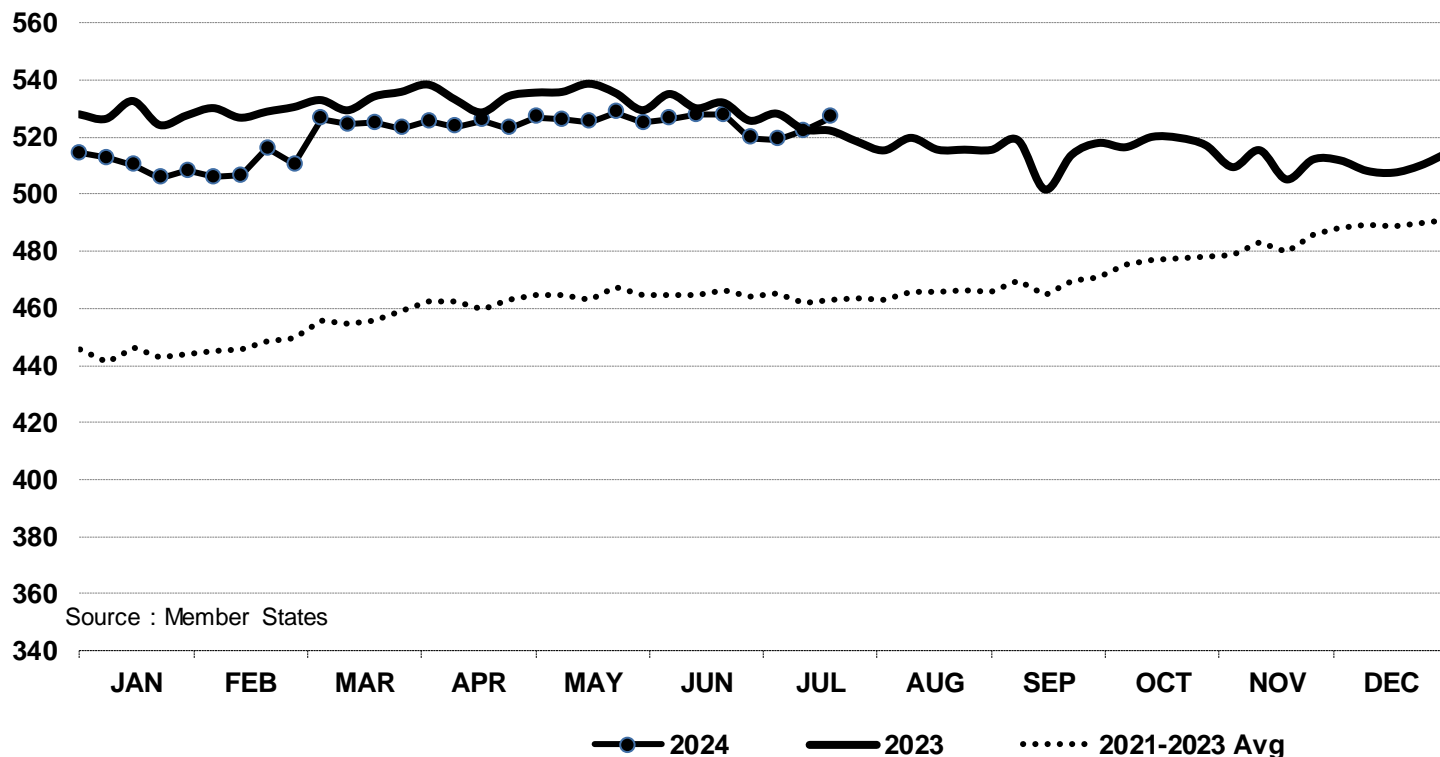


Price in week 29 : **501.73**
 % change y/y : **+ 3.92%**
 % Ref. Price in wk 0 : **217.1%**

Average price in June 2024 : **505.79**
 % change y/y : **+ 2.17%**



In € / 100 kg Young Bovines 8-12m Z - R 3 > Wk.29-2024

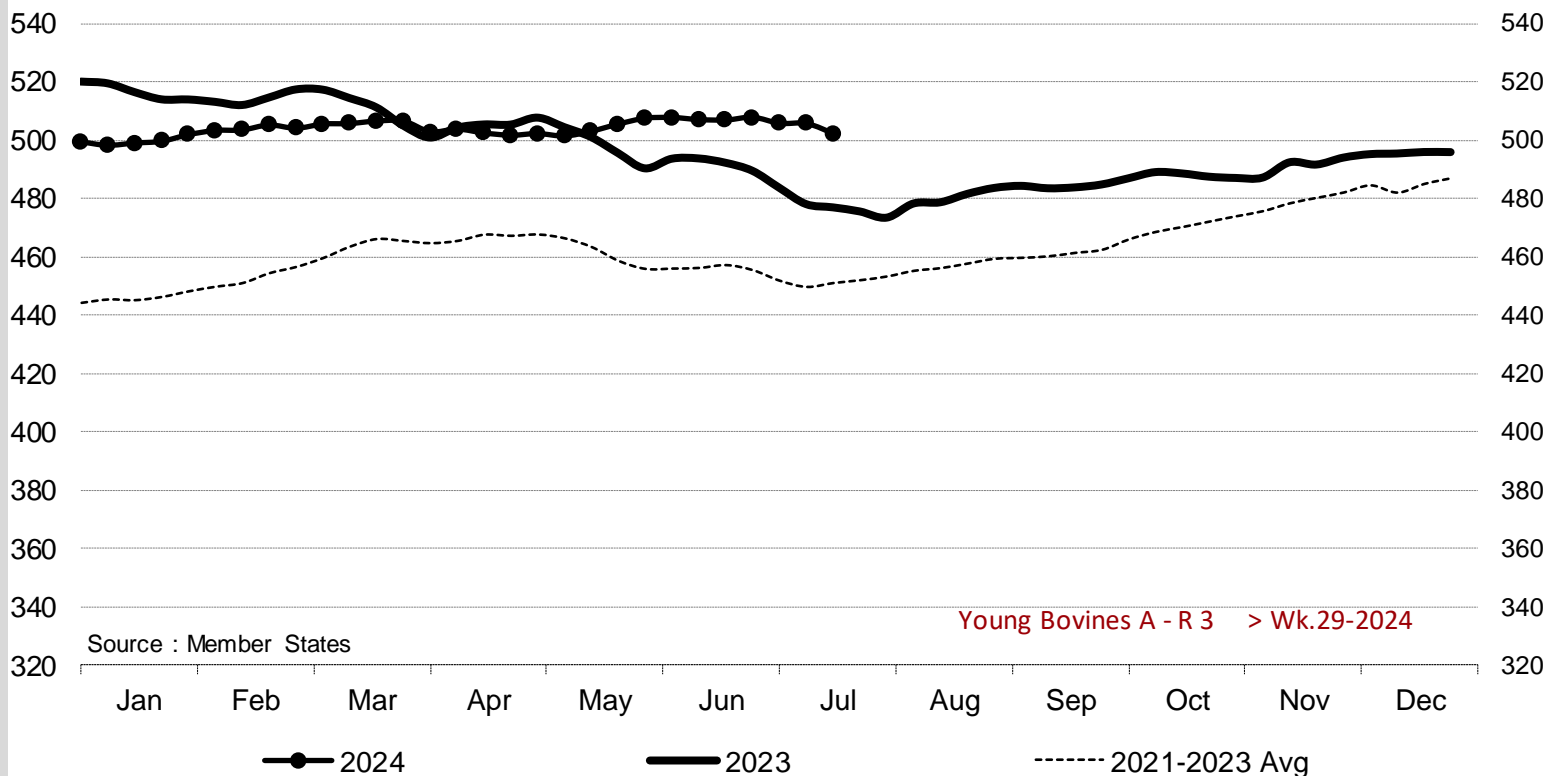


Source : Member States

Price in week 29 : **527.09** 20/06/2024 Average price in June 2024 : **525.46**
 % change y/y : **+ 0.9%** % change y/y : **- 1.0%**

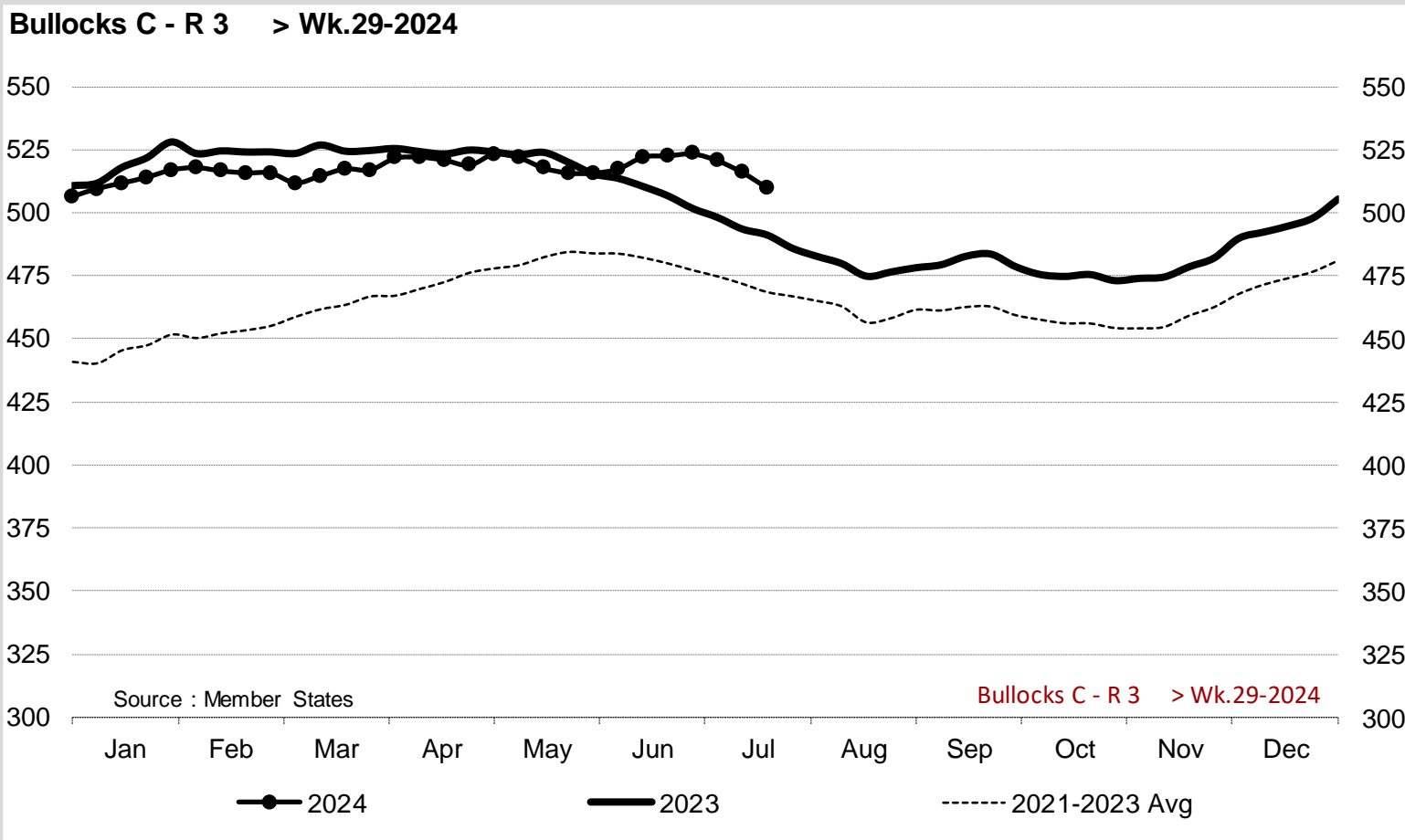


Young Bovines A - R 3 > Wk.29-2024



Price in week 29 : **502.19**
 % change y/y : **+ 5.2%**

Average price in June 2024 : **507.33**
 % change y/y : **+ 3.0%**

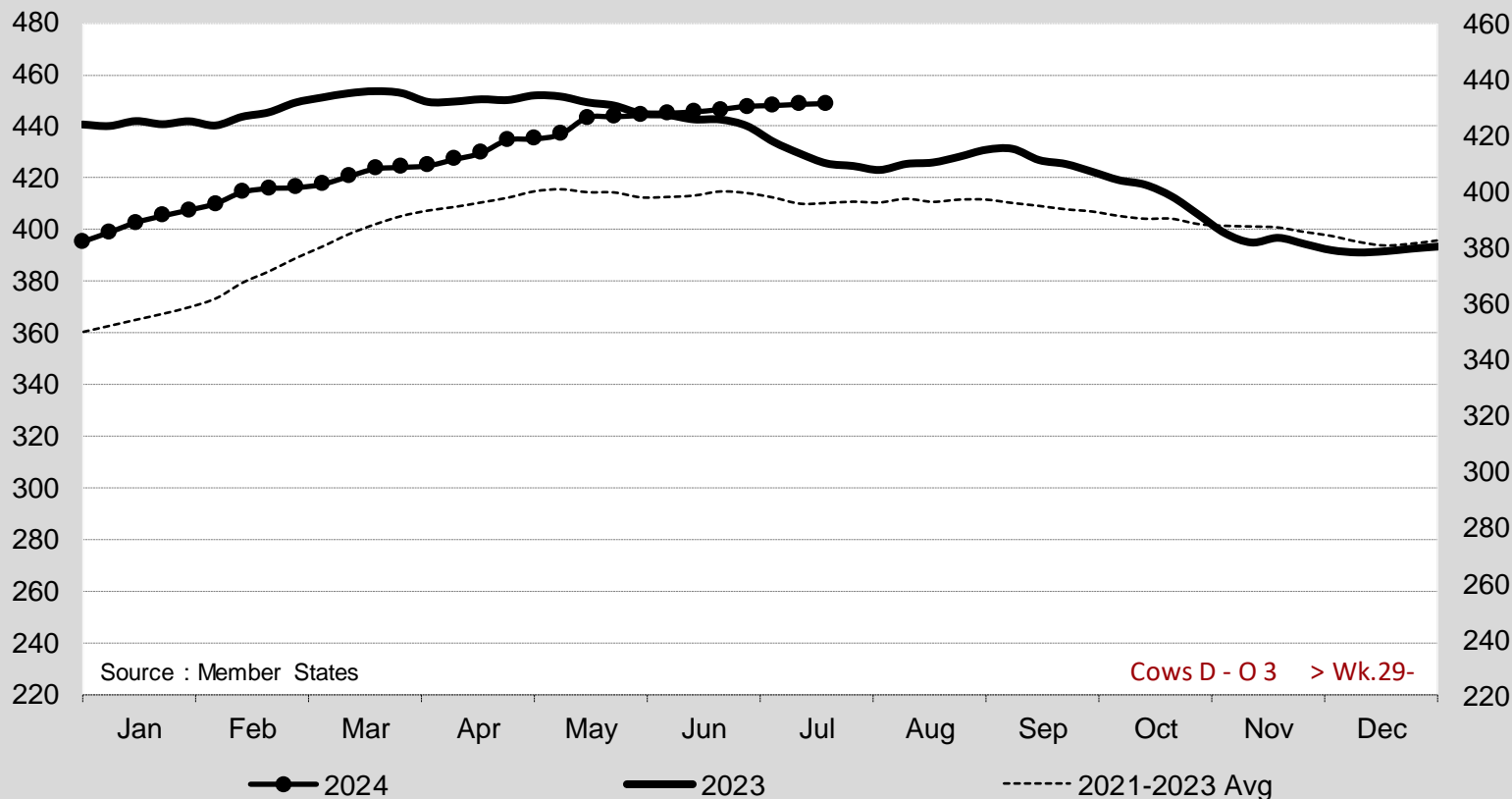


Price in week 29 : **509.69**
 % change y/y : **+ 3.8%**

Average price in June 2024 : **521.07**
 % change y/y : **+ 2.3%**



Cows D - O 3 > Wk.29-2024



Source : Member States

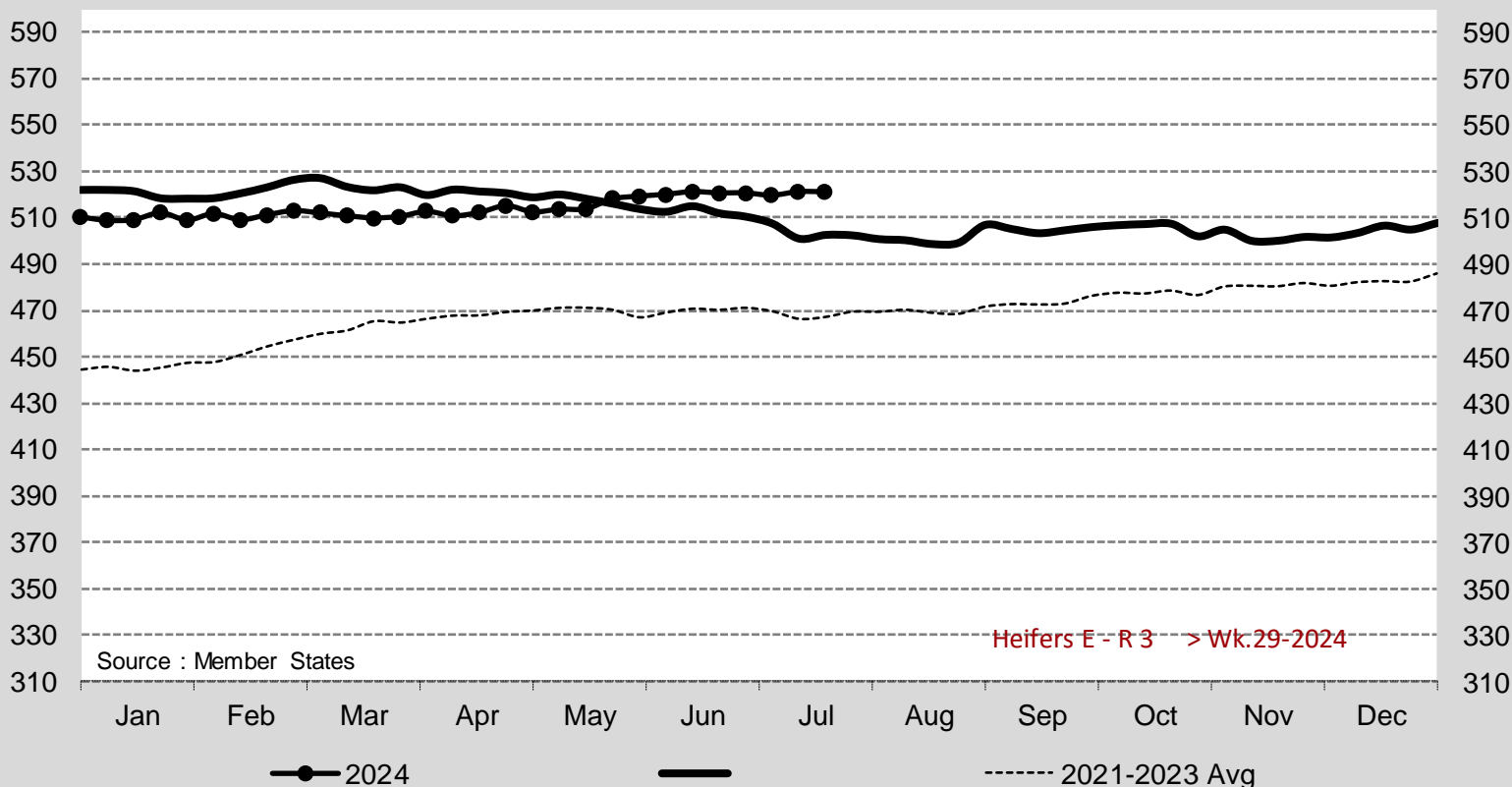
Cows D - O 3 > Wk.29-

Price in week 29 : **431.30**
 % change y/y : **+ 5.3%**

Average price in June 2024 : **428.81**
 % change y/y : **+ 0.7%**



Heifers E - R 3 > Wk.29-2024



Source : Member States

Heifers E - R 3 > Wk.29-2024

Price in week 29 :	520.86	Average price in June 2024 :	520.27
% change y/y :	+ 3.6%	% change y/y :	+ 1.4%

EU Weekly Prices of Live Bovine Animals



European Commission
E3 - Animal Products

Week 29 from 15/07/2024
to 21/07/2024

Prices of Live Bovine Animals

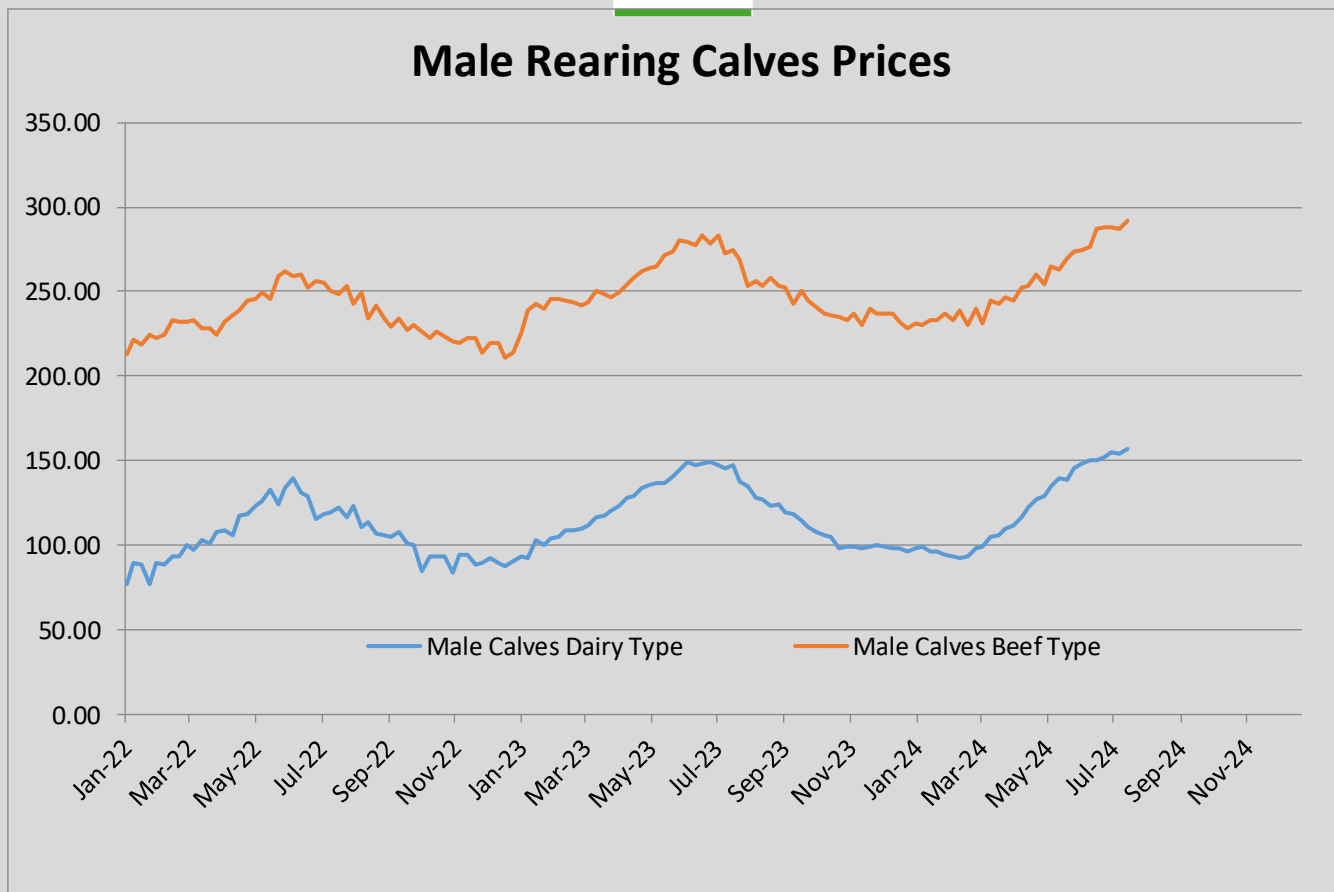
Male Calves aged between 8 days and 4 weeks															
	BE	DK	DE	IE	ES	FR	IT	NL	AT	PL	PT	RO	SI	SE	EU
Male Calves Dairy type															
Market Price € / head	126.50	103.88	174.64	134.11	116.66	137.70	183.77	172.00	179.21	208.20		48.30			156.87
Previous week market price	126.50	103.89	171.86	132.34	116.65	133.07	182.95	172.00	164.70	202.57		48.25			154.08
Difference with previous week	0.00	-0.01	2.78	1.77	0.01	4.63	0.82	0.00	14.51	5.62		0.05			2.79
% of EU average	81	66	111	85	74	88	117	110	114	133		31			100
Coefficient	3.09	3.16	21.48	8.74	4.54	18.31	10.46	8.94	3.14	11.97		6.17			100
Male Calves Beef type															
Market Price € / head	404.44		272.90	230.56	222.00	301.97	265.89	277.00	469.06	298.86		421.00			291.55
Previous week market price	404.44		265.70	203.66	221.78	299.95	265.87	277.00	457.86	296.45		420.57			286.95
Difference with previous week	0.00		7.20	26.90	0.22	2.02	0.02	0.00	11.20	2.42		0.44			4.60
% of EU average	139		94	79	76	104	91	95	161	103		144			100
Coefficient	3.54		17.22	9.25	11.28	27.41	9.09	6.32	2.78	8.75		4.38			100

Store Cattle															
	BE	DK	DE	IE	ES	FR	IT	NL	AT	PL	PT	RO	SI	SE	EU
Young Store Cattle															
Market Price € / kg	4.93			2.59	3.64	3.77	3.65		3.04		3.34			2.41	3.45
Previous week market price	4.93			2.64	3.64	3.77	3.65		3.03		3.19			2.35	3.45
Difference with previous week	0.00			-0.05	0.00	0.00	0.00		0.01		0.15			0.06	-0.00
% of EU average	143			75	105	109	106		88		97			70	100
Coefficient	5.46			20.59	6.77	45.01	7.52		5.70		4.34			4.62	100
Yearling Male Store Cattle															
Market Price € / kg	4.61		7.02	2.33		3.55	4.04		3.51		3.16			2.44	4.19
Previous week market price	4.61		6.79	2.32		3.57	4.04		3.25		3.24			2.58	4.13
Difference with previous week	0.00		0.23	0.01		-0.02	0.00		0.26		-0.08			-0.14	0.06
% of EU average	110		168	56		85	96		84		75			58	100
Coefficient	2.86		24.84	23.42		22.53	16.29		4.85		1.74			3.48	100
Yearling Female Store Cattle															
Market Price € / kg	3.53		3.90	2.32		3.30	3.01		2.47		2.76			2.26	3.20
Previous week market price	3.53		3.87	2.36		3.30	3.01		2.32		2.85			2.42	3.20
Difference with previous week	0.00		0.03	-0.04		0.00	0.00		0.15		-0.09			-0.16	0.00
% of EU average	110		122	72		103	94		77		86			71	100
Coefficient	4.94		25.03	14.65		32.36	13.97		3.80		2.16			3.10	100

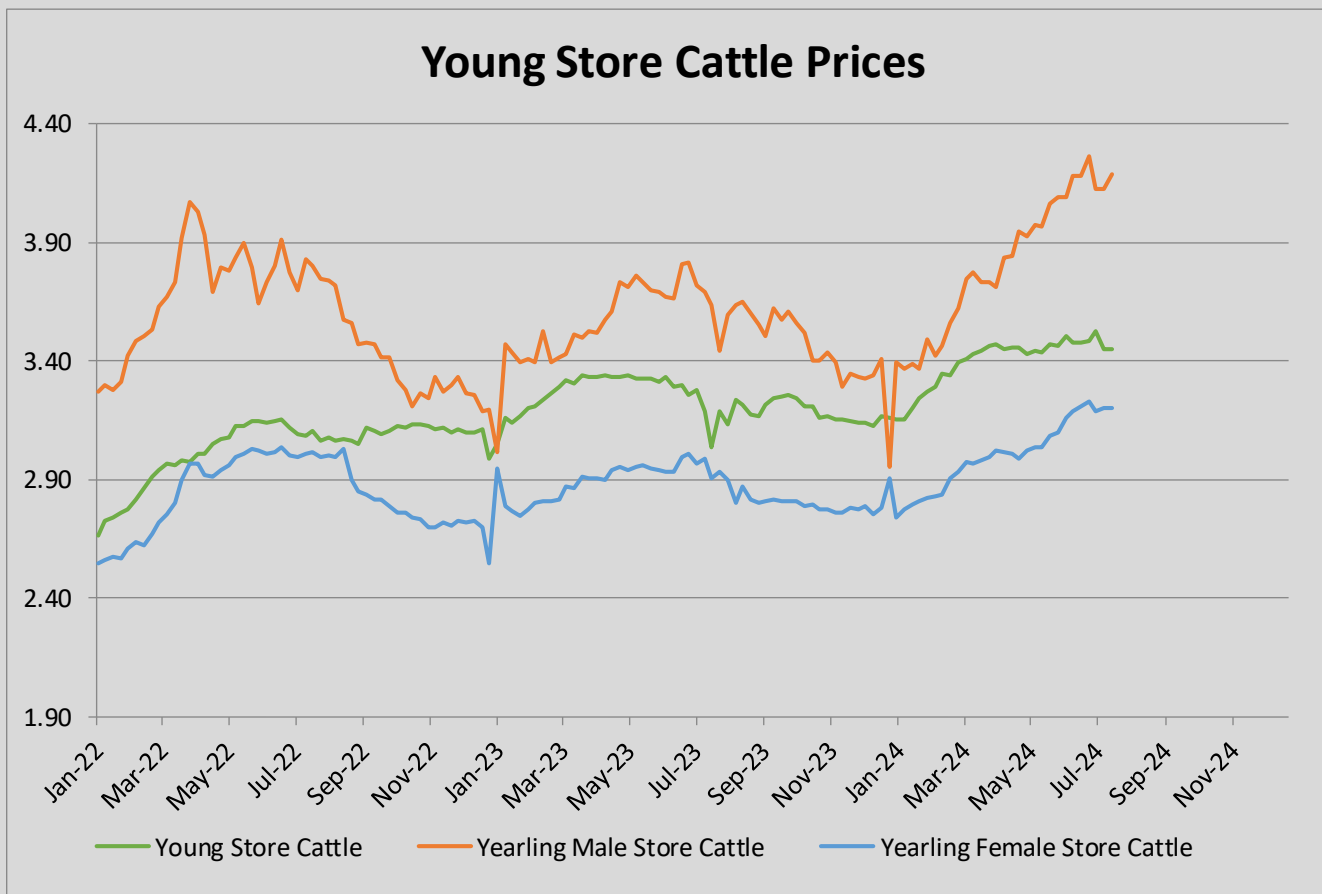
Calves Slaughtered before 8 months															
	BE	DK	DE	IE	ES	FR	IT	NL	AT	PL	PT	RO	SI	SE	EU
Market Price € / 100 kg	693.00		540.00			683.10	567.75	563.95			497.16		471.59		606.85
Previous week market price	693.00		564.00			681.90	557.50	563.95			478.64		472.21		606.51
Difference with previous week	0.00		-24.00			1.20	10.25	0.00			18.52		-0.62		0.34
% of EU average	114		89			113	94	93			82		78		100
Coefficient	8.54		7.98			27.77	16.23	37.91			1.24		0.33		100



Male Rearing Calves Prices



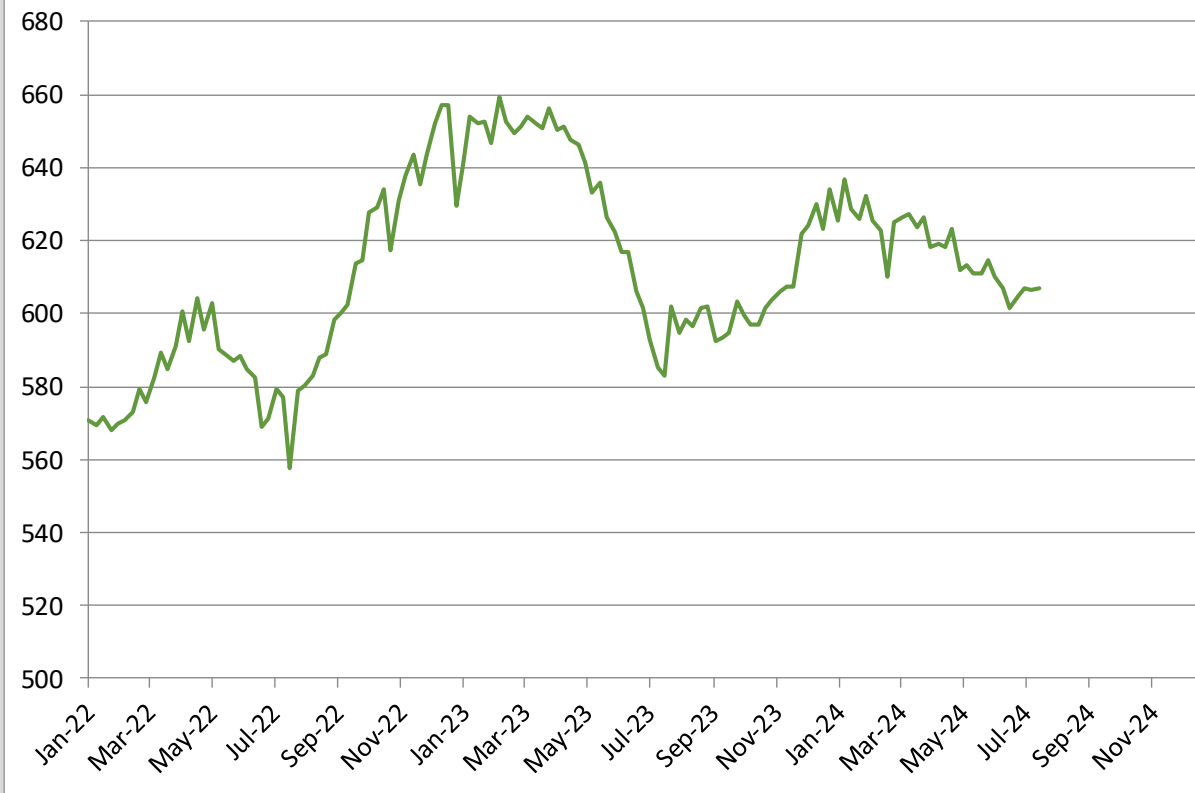
Male Rearing Calves Beef type		Male Rearing Calves Dairy type	
Price in	Week 29	Price in	Week 29
	291.55		156.87
Change y/y	+6.2%	Change y/y	+6.6%



Young Store Cattle Price in	Week 29	3.45	Yearling Male Store Cattle Price	4.19
	Change y/y	+13.6%	Change y/y	+15.3%
Yearling Female Store Cattle Price		3.20		
	Change y/y	+10.3%		



Calves Slaughtered before the Age of 8 Months



Price in Week 29 **606.85 € / 100 kg of carcasse weight**
Change y/y +4.1%