



### ➔ Live Animal Prices

Last update : 11.07.2024

Prices not received : EL, NL, MT

Semaine / Week : 27

du / from : 01.07.24

au / to : 07.07.24

PRIX DE MARCHÉ NATIONAUX et COMMUNAUTAIRES UE (en Euro & en % du prix de référence)

NATIONAL and COMMUNITY EU MARKET PRICES (in Euro & as % of the reference price)

(Euro/100 kg PC/DW)	YOUNG MALE BOVINES 12>24 m - C A T E G O R I E A						BULLOCKS - C A T E G O R I E C						YOUNG BOVINES 8>12 m - C A T E G O R I E Z						C A T E G O R I E A / C / Z			
	U2+U3	R2+R3	O2+O3	U+R+O	Change on last week	%	U2+U3+U4	R3+R4	O3	U+R+O	Change on last week	%	U2+U3	R2+R3	O2+O3	U+R+O	Change on last week	%	R3	% of ref. price	Change on last week	%
Average prices	506.26	500.69		499.56	-1.89	-0.38%	396.46	523.95	536.78	529.14	-4.67	-0.87%	525.09	516.19		506.18	+0.72	+0.1%	504.38	226.79	-1.97	-0.39%
	U	R	O	URO			U	R	O	URO			U	R	O	URO			R3			
BE	481.26	440.54		475.86	-76.52	-13.9%													475.86		-76.52	-13.9%
BG		509.96		509.96		+7.1%													509.96		+33.81	7.1%
CZ	454.19	458.28	c	c									c	c	c				c			
DK		418.12	402.62	409.48	-6.73	-1.6%							464.67	482.80	477.03	+1.66	0.3%		457.86		-2.21	-0.5%
DE	482.03	494.91		488.37	-1.75	-0.4%													488.37		-1.75	-0.4%
EE		c		c									c		c				c			
IE							505.86	521.92	542.23	531.36	-5.32	-1.0%							531.36		-5.32	-1.0%
EL		434.34	451.91	433.86	-8.37	-1.9%							489.56	512.85	489.32	-15.24	-3.0%		460.69		-13.14	-2.8%
ES	519.90	529.27		522.92	-1.48	-0.3%							524.25	530.06	512.85	527.70	+0.97	0.2%	525.48		-0.13	0.0%
FR	512.88	517.71	501.86	512.79	-1.74	-0.3%	534.48	537.00		517.34	-2.14	-0.4%							513.50		-1.77	-0.3%
HR	508.81	524.79		520.99	-11.56	-2.2%							767.49			767.49	+248.56	47.9%	531.72		-0.17	0.0%
IT	537.78	496.75	449.23	530.37	+4.57	+0.9%							549.23	582.21	578.87	569.74	+6.61	1.2%	532.35		+4.20	0.8%
CY					idem	idem																
LV		446.65		446.65	+55.55	+14.2%							410.39			410.39	-1.38	-0.3%	439.20		+43.79	11.1%
LT		415.81	437.53	430.92	+0.28	+0.1%							c		c				c			
LU	c	c		c															c			
HU		171.38		171.38	+0.81	+0.5%													171.38		+0.81	0.5%
MT																						
NL		342.34	128.25	235.78	-0.25	-0.1%							471.62	423.97	433.37	-2.28	-0.5%		387.97		+2.29	0.6%
AT	478.35	489.00		481.92	+2.44	+0.5%							550.51	531.65		542.54	+12.15	2.3%	486.54		+3.17	0.7%
PL		485.40	490.98	488.95	+2.73	+0.6%							442.50	454.49	453.10	-7.91	-1.7%		488.65		+2.64	0.5%
PT	506.04	496.54		501.86	+0.05	+0.0%							470.60	460.71		462.34	-12.66	-2.7%	483.13		-6.02	-1.2%
RO	440.72	447.95	486.10	471.92	+21.66	+4.8%							435.50	476.88	470.95	+24.50	5.5%		471.21		+23.77	5.3%
SI	488.68	502.00	481.78	491.18	-1.67	-0.3%							530.94	289.09	498.67	382.93	-75.71	-16.5%	482.25		-7.27	-1.5%
SK		476.67	c	c											c	c			c			
FI		475.06	467.45	469.24	-7.06	-1.5%													469.24		-7.06	-1.5%
SE		530.57	548.46	540.75	-6.26	-1.1%							532.37			532.37	-13.03	-2.4%	540.25		-6.67	-1.2%

Source : Member States

## EU Weekly Beef Carcase Prices



11.07.2024  
du / from : 01.07.24  
au / to : 07.07.24

Prices not reviewed in

PRIX DE MARCHÉ - ETATS MEMBRES  
MARKET PRICES - MEMBER STATES

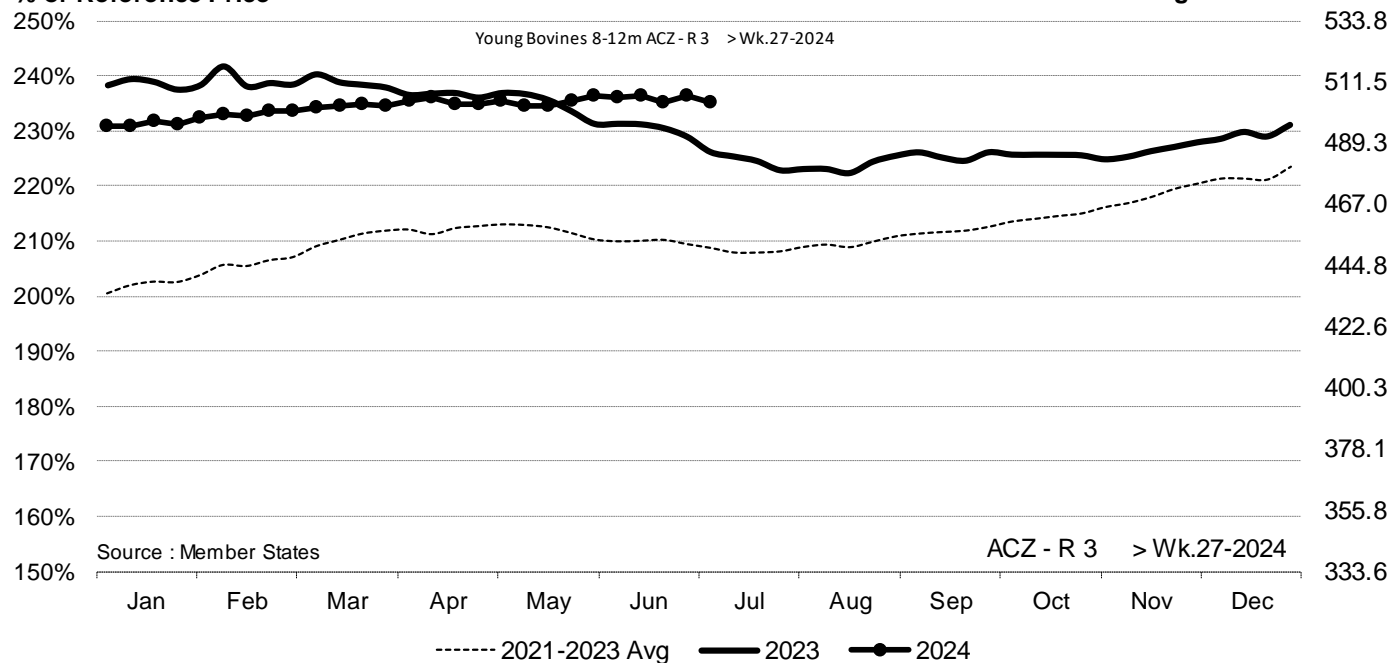
( €100kg PC/DW )	BE	BG	CZ	DK	DE	EE	IE	EL	ES	FR	HR	IT	CY	LV	LT	LU	HU	MT	NL	AT	PL	PT	RO	SI	SK	FI	SE	EU	Change last week	%	UK	
Young Bovines 8-12m Z-U2			38.8	440.6			516.3		551.2		812.0	595.4				c	c		472.0	581.0		517.3		561.7	c	516.2	552.2	+2.60	+0.47%			
Young Bovines 8-12m Z-U3			c	454.9			501.0		551.0			426.4							476.0	575.7		449.3					543.7	547.1	+4.27	+0.79%		
Young Bovines 8-12m Z-R2				469.8			c	493.5	498.3	534.4		599.1		423.2		c	c		473.0	528.4		469.2	419.7	261.7			532.3	519.8	-2.46	-0.47%		
Young Bovines 8-12m Z-R3			c	466.3			505.7	486.8	532.4			523.6		378.2		c			474.0	552.5	442.5	457.0	486.8	521.7			550.3	519.4	-0.25	-0.05%		
Young Bovines 8-12m Z-O2			c	456.6	464.2		c	484.6	485.4	481.0		551.5		343.2		c	c		386.0	c	434.8	445.4	459.8	476.7	c		553.0	545.4	-6.42	-1.39%		
Young Bovines 8-12m Z-O3				459.2	470.9		c	505.7	491.7	506.9		573.7		353.2		c			433.0	c	426.9	442.0	425.8	496.7			561.9	478.0	-1.71	-0.36%		
<b>Young Bovines 8 &gt; 12 m</b>			c	<b>460.8</b>	<b>465.1</b>		c	<b>499.6</b>	<b>493.8</b>	<b>523.8</b>		<b>812.0</b>	<b>577.1</b>	<b>364.2</b>		c	c		<b>418.0</b>	c	<b>434.2</b>	<b>454.6</b>	<b>452.8</b>	<b>380.5</b>	c	<b>550.7</b>	<b>502.3</b>	-0.42	-0.08%			
Young Bulls 12>24m A-U2	510.3		480.5	438.9	509.0	505.0	521.6	462.3	547.1	549.0	550.8	571.4			450.4				348.0	502.7	498.6	522.8	448.1	514.0	c	510.6	537.3	533.4	-2.03	-0.38%		
Young Bulls 12>24m A-U3	493.1		484.7	428.1	504.6		c	524.3	448.8	548.0	531.0	526.7	541.9						340.0	503.8	486.5	543.8	475.2	513.3	c	510.5	548.1	521.8	-2.04	-0.39%		
Young Bulls 12>24m A-R2	452.8		463.8	416.3	500.5	463.0	507.4	440.2	534.7	525.0	533.4	506.8		463.2	411.9	c	174.0		347.0	493.7	494.4	488.1	461.1	505.2	482.5	479.5	530.0	504.2	+0.94	+0.19%		
Young Bulls 12>24m A-R3	414.1	510.0	466.1	422.3	497.9		c	512.0	438.2	533.2	518.0	524.3	486.3		378.2	426.9	c		343.0	495.9	482.5	524.6	441.8	510.9	485.2	480.7	535.7	506.4	-1.34	-0.26%		
Young Bulls 12>24m A-O2	411.1	497.0	444.2	377.8	462.2		c	486.5	436.9	500.2	479.0	581.7	422.6	450.0	384.0	406.4	c	249.7		89.0	450.9	466.9	450.5	458.6	460.6	430.4	442.6	515.0	463.2	+0.17	+0.04%	
Young Bulls 12>24m A-O3	374.0	437.0		383.8	470.4		c	493.2	420.1	500.3	473.0	530.6	440.5	430.0	414.2	440.4			194.0	459.0	468.3	462.7	486.5	475.0	c	456.4	529.0	473.5	-0.87	-0.18%		
<b>Young Bulls 12 &gt; 24 m</b>	<b>493.0</b>	<b>475.2</b>	c	<b>405.6</b>	<b>497.7</b>		c	<b>508.8</b>	<b>455.4</b>	<b>537.7</b>	<b>524.8</b>	<b>535.2</b>	<b>556.4</b>	<b>449.8</b>	<b>407.4</b>	c	c	<b>233.3</b>	<b>289.1</b>	<b>498.7</b>	<b>478.0</b>	<b>506.6</b>	<b>459.8</b>	<b>489.4</b>	c	<b>459.3</b>	<b>528.3</b>	<b>507.9</b>	-0.11	-0.02%		
Bulls B-R3			468.9	c	318.7	437.3		c	433.8			471.0	488.5	458.1						452.8	484.8	408.2	457.0	508.1	c	448.7	505.6	476.3	+3.54	+0.75%		
<b>Bulls</b>	<b>468.9</b>	c	<b>318.7</b>	<b>437.3</b>		c	<b>433.8</b>			<b>471.0</b>	<b>488.5</b>	<b>458.1</b>		<b>401.2</b>	<b>421.2</b>	c			<b>452.8</b>	<b>484.8</b>	<b>408.2</b>	<b>457.0</b>	<b>508.1</b>	c	<b>448.7</b>	<b>505.6</b>	<b>476.3</b>	+3.54	+0.75%			
Bullocks C-U2			c				525.2					555.0								512.4		650.0	445.0				550.8	532.0	-4.07	-0.76%		
Bullocks C-U3			c	485.3	547.2		525.4			558.0		552.9								529.2		500.0	445.0	519.9			534.9	525.5	+1.18	+0.23%		
Bullocks C-U4							526.6													527.0	506.7	420.0	516.4	518.1			539.4	520.7	-2.74	-0.52%		
Bullocks C-R3			c	494.1	513.3		c	516.9		537.0		560.4		448.2		c	c			527.0	506.7	420.0	516.4	518.1			539.4	520.7	-2.74	-0.52%		
Bullocks C-R4			c	464.4	549.0		520.8					546.0								506.3		450.0	516.8	521.7			504.4	520.0	-4.29	-0.82%		
Bullocks C-O3			c	475.8	443.8		506.5			473.0		480.0								461.3	486.5	400.0	544.6	491.7	c		516.0	500.3	-3.10	-0.62%		
Bullocks C-O4			c	446.5			509.0														c	426.0	117				486.7	508.0	-9.57	-1.85%		
<b>Bullocks</b>			c	<b>476.7</b>	<b>508.4</b>		c	<b>513.2</b>		<b>503.6</b>		<b>551.6</b>				c	c			<b>452.8</b>	<b>484.8</b>	<b>408.2</b>	<b>457.0</b>	<b>508.1</b>	c	<b>448.7</b>	<b>505.6</b>	<b>476.3</b>	-4.26	-0.82%		
Cows D-R3	462.6	358.0	385.0	390.1	455.2		c	471.3	230.9	397.2	551.0	408.9	432.1		420.7	358.5	c	353.1		334.0	438.7	446.2	374.8	425.8	359.9	c	350.0	514.4	499.5	-1.13	-0.23%	
Cows D-R4		347.8	406.4	392.7	453.4	400.0		465.2		457.1	546.0	452.0	487.8		427.6	367.9	c	327.5		427.0	458.1	454.4	387.4	378.3	378.8	c	280.3	507.1	461.4	+3.03	+0.66%	
Cows D-O2	406.1	205.4	365.7	370.7	427.7		c	435.7	250.8	363.0	498.0	353.9	378.4		342.5	364.3	c	378.6		416.0	394.1	414.4	317.9	408.2	336.5	246.0	295.5	471.4	407.1	+1.24	+0.31%	
Cows D-O3	425.9	294.2	365.8	386.3	434.1	382.2		436.1	247.5	374.2	468.0	388.5	414.9		345.0	378.9	c	358.0		439.0	413.2	427.6	338.4	400.4	322.4	279.3	304.5	494.5	430.9	+0.56	+0.13%	
Cows D-O4	435.2	245.3	376.3	380.1	440.1		c	434.9		433.2	453.0		442.4		359.3	381.7	c	364.2		459.0	426.4	440.4	379.8	416.9	355.7	c	281.5	485.5	430.1	+2.62	+0.61%	
Cows D-P2	355.4	220.4	273.3	333.7	367.9	320.0		405.5	240.9	335.6	417.0	395.6	338.7	276.0	326.1	329.3	c	330.7		359.0	365.5	372.9	268.9	371.9	256.8	184.8	272.3	428.3	364.2	+0.38	+0.10%	
Cows D-P3	380.2	290.8	173.2	360.9	378.6	341.2		422.1	241.6	344.1	439.0		371.6	280.0	296.2	325.8	c	225.9		384.0	374.9	380.6	240.5	388.0	311.7	c	296.9	460.9	409.4	+0.74	+0.18%	
<b>Cows</b>	<b>390.9</b>	<b>262.1</b>	<b>336.1</b>	<b>360.4</b>	<b>424.3</b>		c	<b>428.7</b>	<b>230.9</b>	<b>373.7</b>	<b>481.0</b>	<b>385.5</b>	<b>373.2</b>	<b>277.2</b>	<b>352.6</b>	<b>352.7</b>	c	<b>341.1</b>		<b>411.7</b>	<b>413.5</b>	<b>417.4</b>	<b>318.2</b>	<b>398.0</b>	<b>336.7</b>	c	<b>287.2</b>	<b>477.3</b>	<b>405.3</b>	+0.03	+0.01%	
Heifers E-U2	558.0		c	412.3	487.7		c	536.7		553.1		591.0								506.7	495.3	518.9	440.5	427.3			499.2	526	571.3	-2.86	-0.46%	
Heifers E-U3	522.1		c	447.8	481.1		c	539.4	482.9	537.0	597.0	530.6	601.1		398.2	378.2	c			505.4	502.5	518.4	467.9	490.9	c	531.2	505.1	559.5	-1.62	-0.29%		
Heifers E-U4			422.1	433.2	479.7		536.7					548.0	610.5							488.1	501.1		495.6	490.8			505.6	499.2	-2.92	-0.58%		
Heifers E-R2	506.6	69.0	405.4	416.4	472.9		c	519.3	510.9	539.0	546.0	542.0	574.1		373.8	367.5	c	338.6		274.0	482.2	484.6	511.4	457.0	457.4	c	460.1	525.5	509.9	-1.37	-0.27%	
Heifers E-R3	478.9		407.2	438.7	476.9		c	522.8		528.9	554.0	549.2	564.3		389.0	388.1	c	330.0		204.0	488.7	498.1	518.6	458.8	479.2	c	490.6	525.7	519.8	-0.55	-0.11%	
Heifers E-R4			423.9	434.5	474.7		c	522.8		526.0	538.0	555.2	529.9		358.2	399.3	c	338.6		251.0	481.7	493.2	469.9	452.0	446.6		464.3	523.2	507.8	-5.22	-1.02%	
Heifers E-O2	390.6	232.5	368.6	388.7	409.5		c	493.0	470.9	451.8		520.7	358.3		359.6	380.4	c	369.5		283.0	411.1	443.7	449.1	443.2	41							



ACZ - R 3 > Wk.27-2024

% of Reference Price

€/100 kg cwe

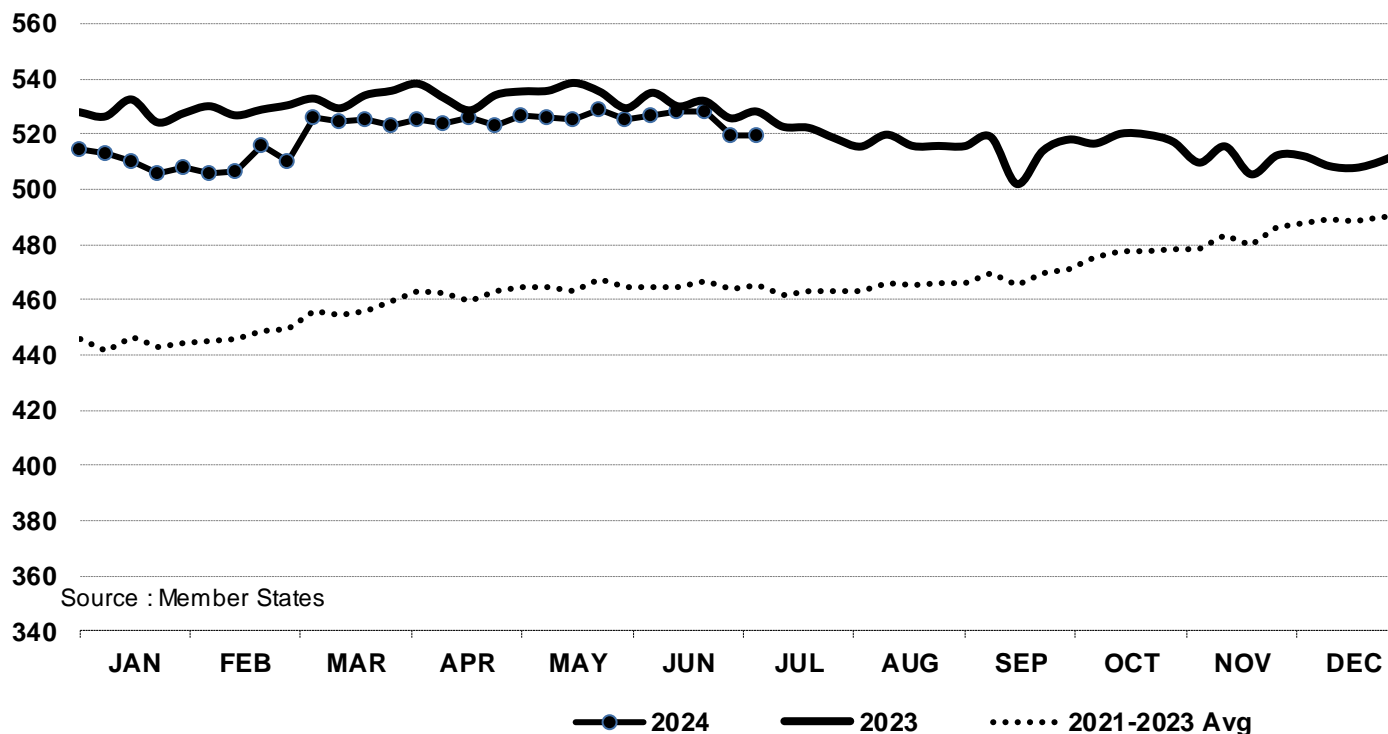


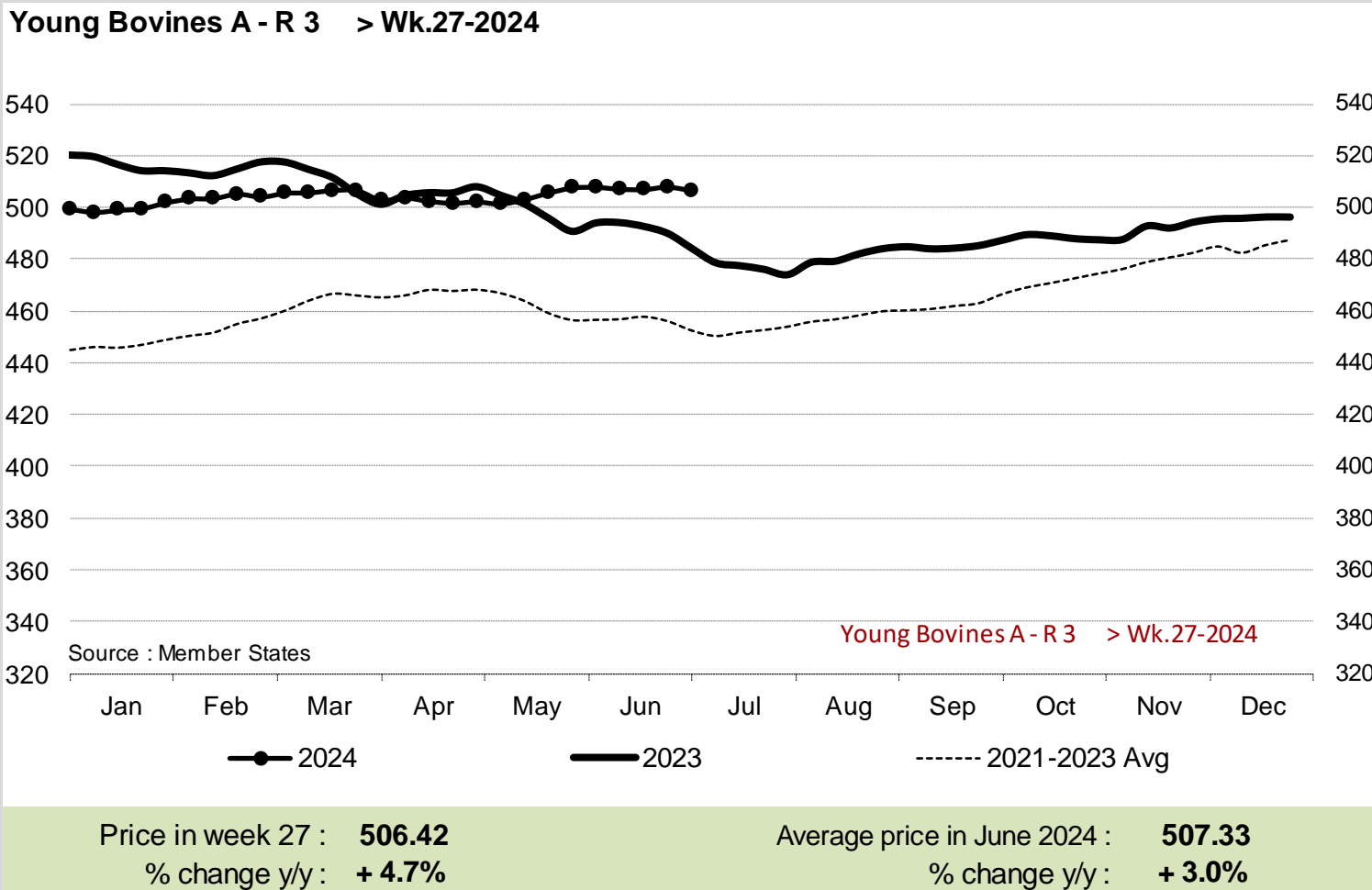
Price in week 27 : **504.38**  
 % change y/y : **+ 3.78%**  
 % Ref. Price in wk 0 : **218.5%**

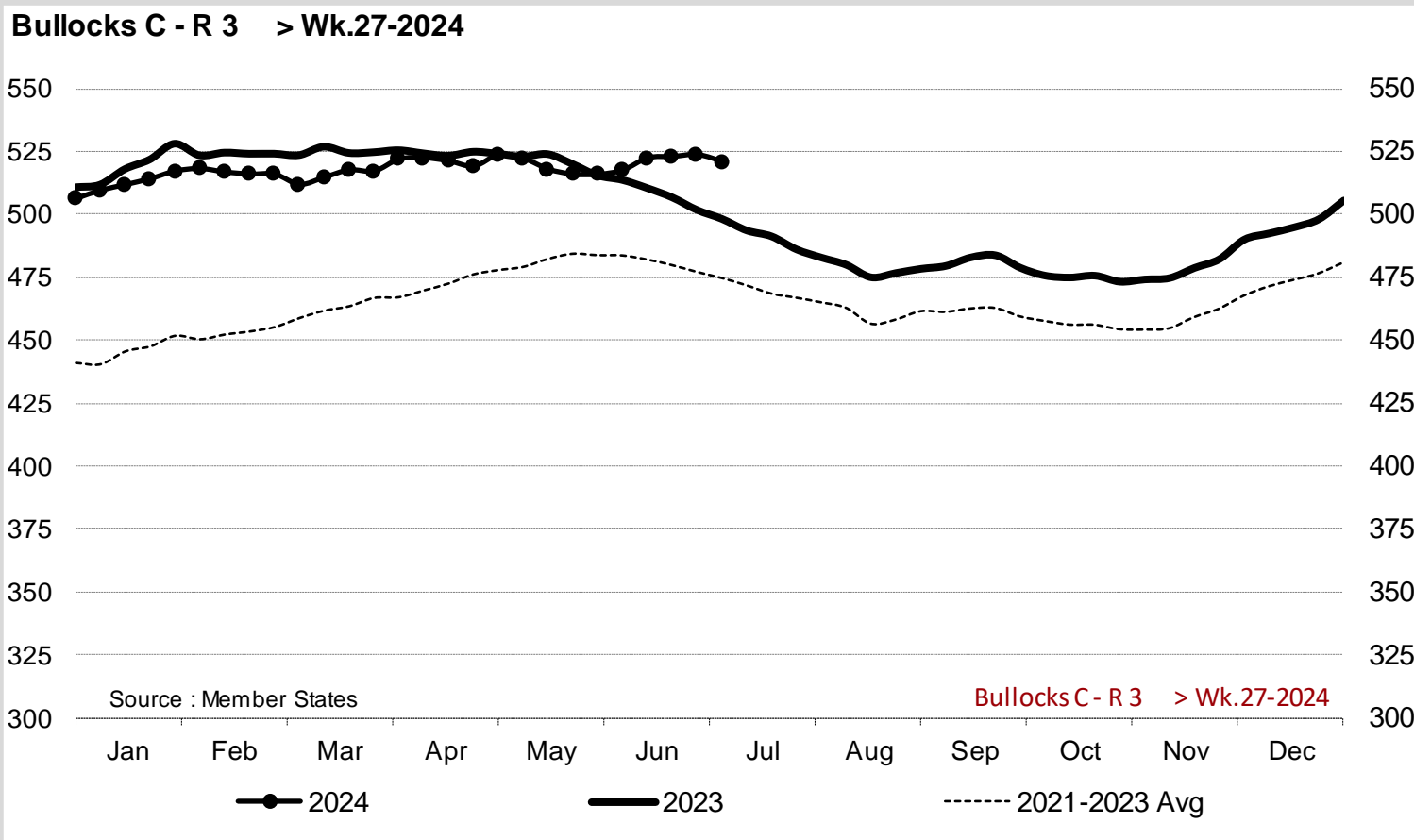
Average price in June 2024 : **505.79**  
 % change y/y : **+ 2.17%**



In € / 100 kg      Young Bovines 8-12m Z - R 3      > Wk.27-2024



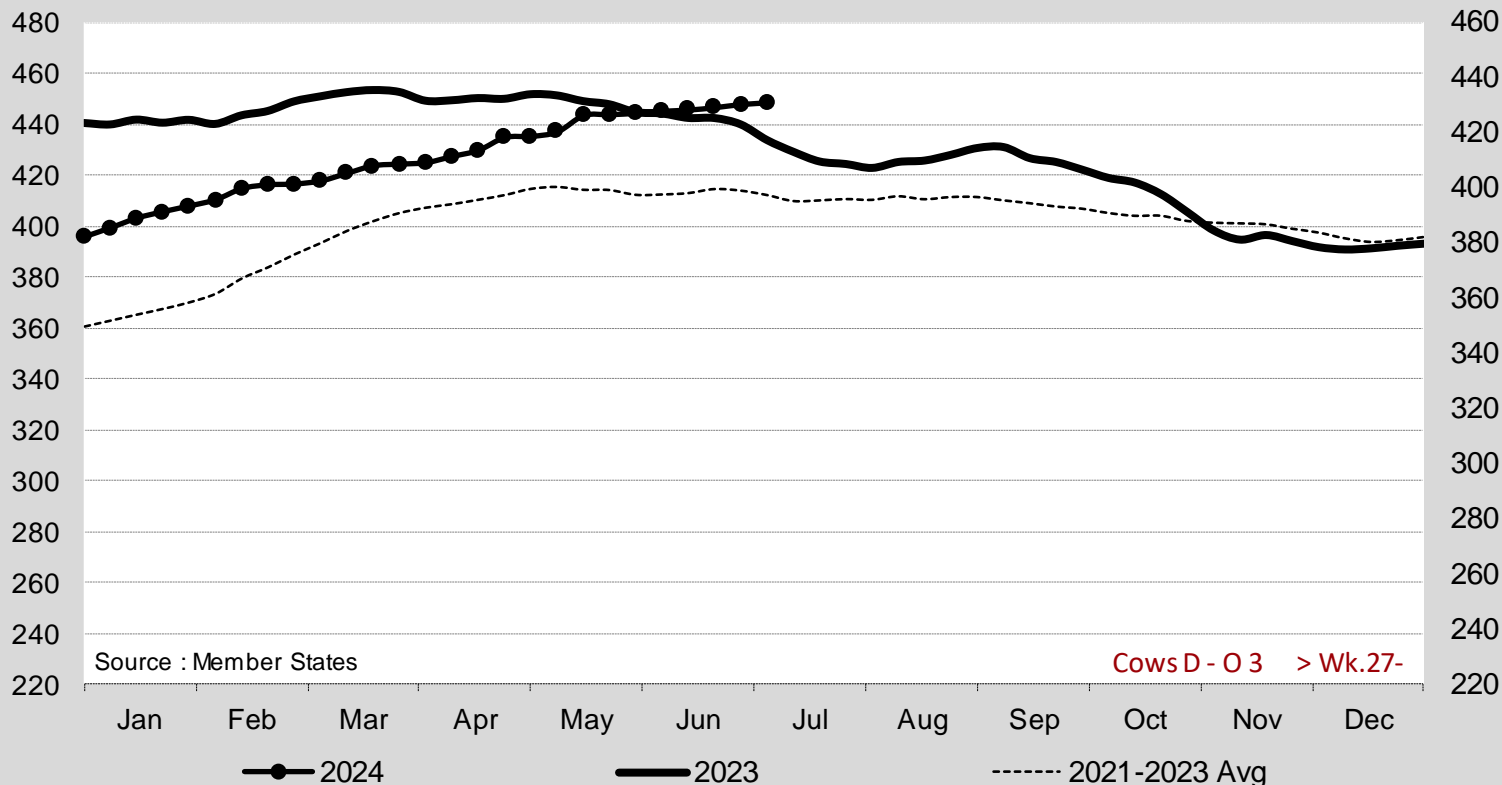




Price in week 27 : **520.72**      Average price in June 2024 : **521.07**  
 % change y/y : **+ 4.5%**      % change y/y : **+ 2.3%**



### Cows D - O 3 > Wk.27-2024



Source : Member States

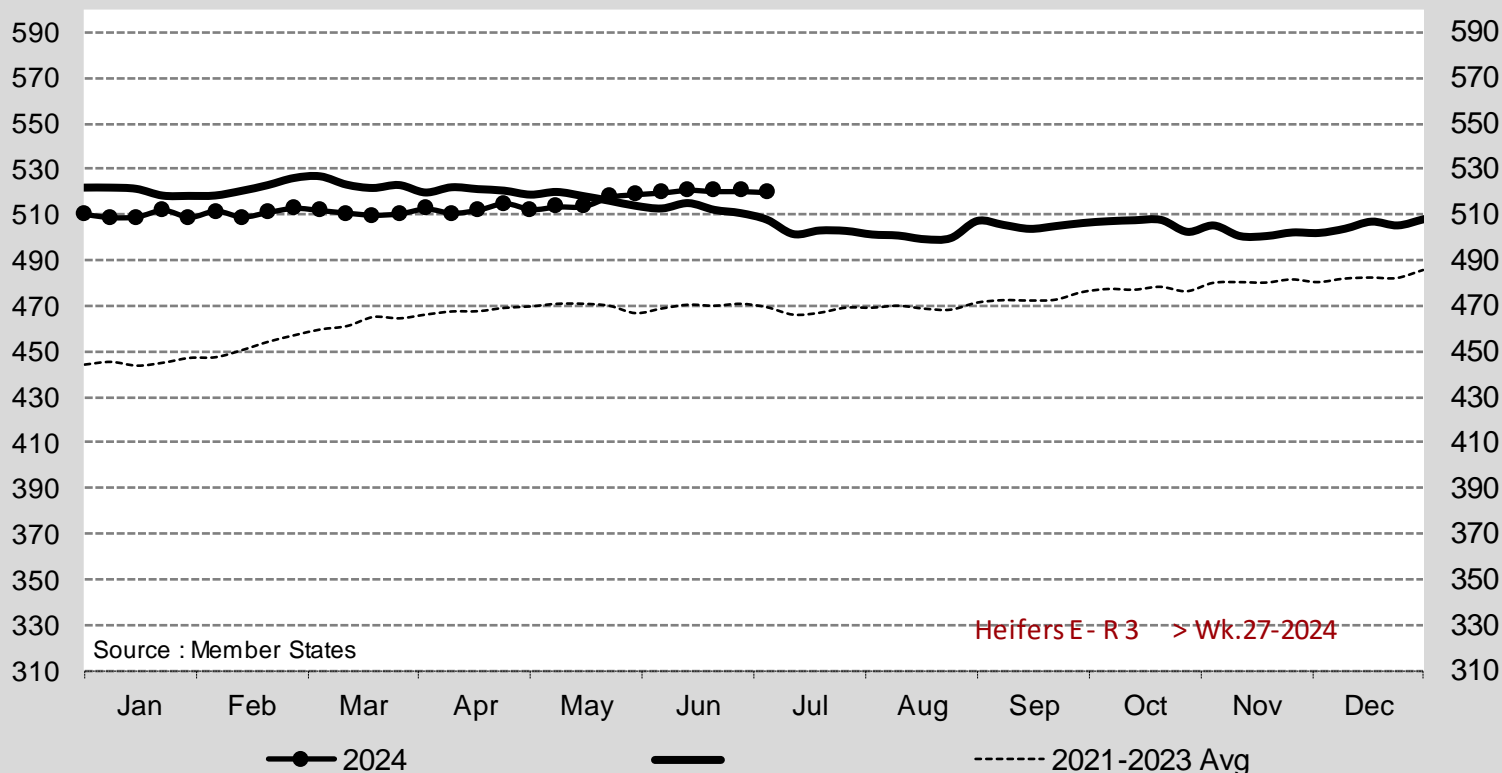
Cows D - O 3 > Wk.27-

Price in week 27 : **430.91**  
 % change y/y : **+ 3.2%**

Average price in June 2024 : **428.80**  
 % change y/y : **+ 0.7%**



### Heifers E - R 3 > Wk.27-2024



Price in week 27 : **519.83**      Average price in June 2024 : **520.25**  
 % change y/y : **+ 2.4%**      % change y/y : **+ 1.4%**





European Commission  
E3 . Animal Products

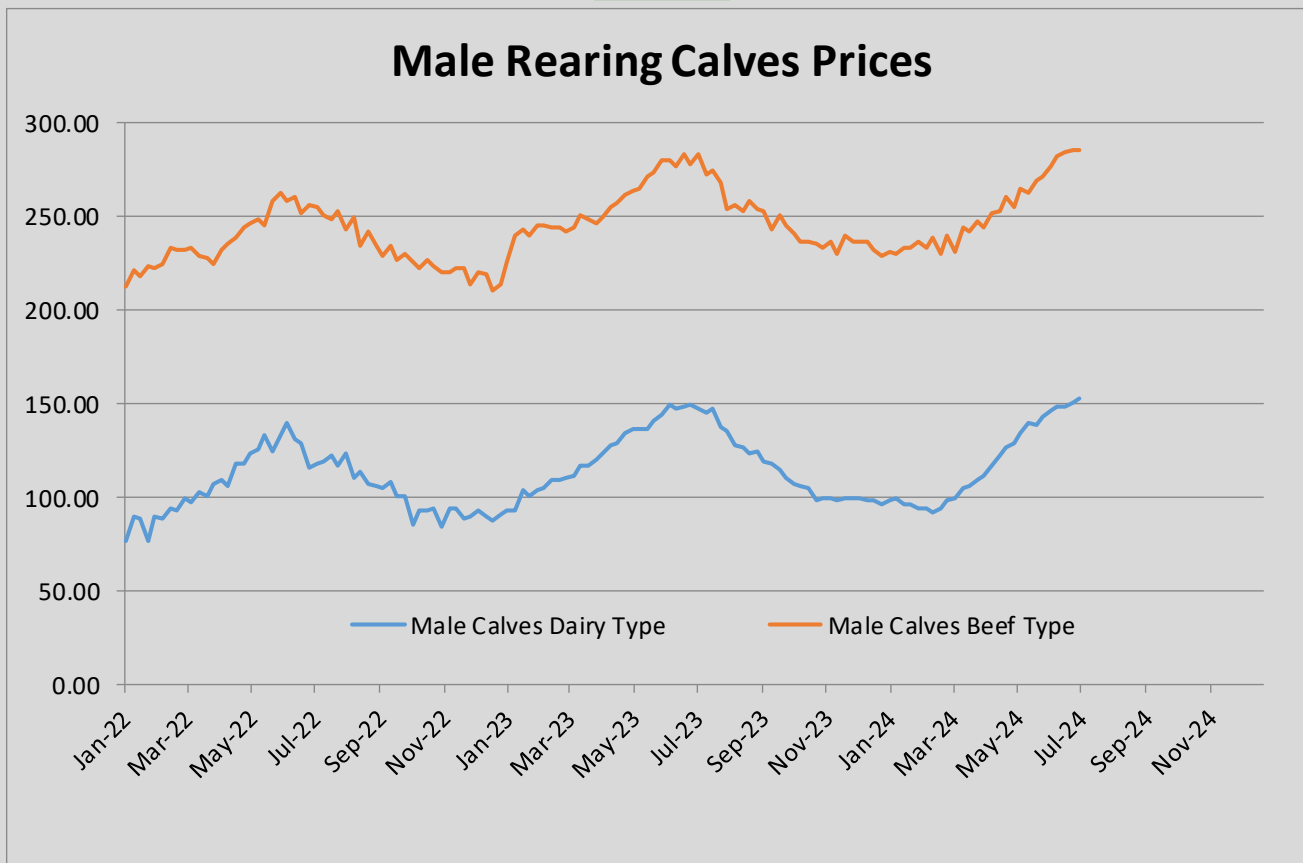
Week 27 from 01/07/2024  
to 07/07/2024

### Prices of Live Bovine Animals

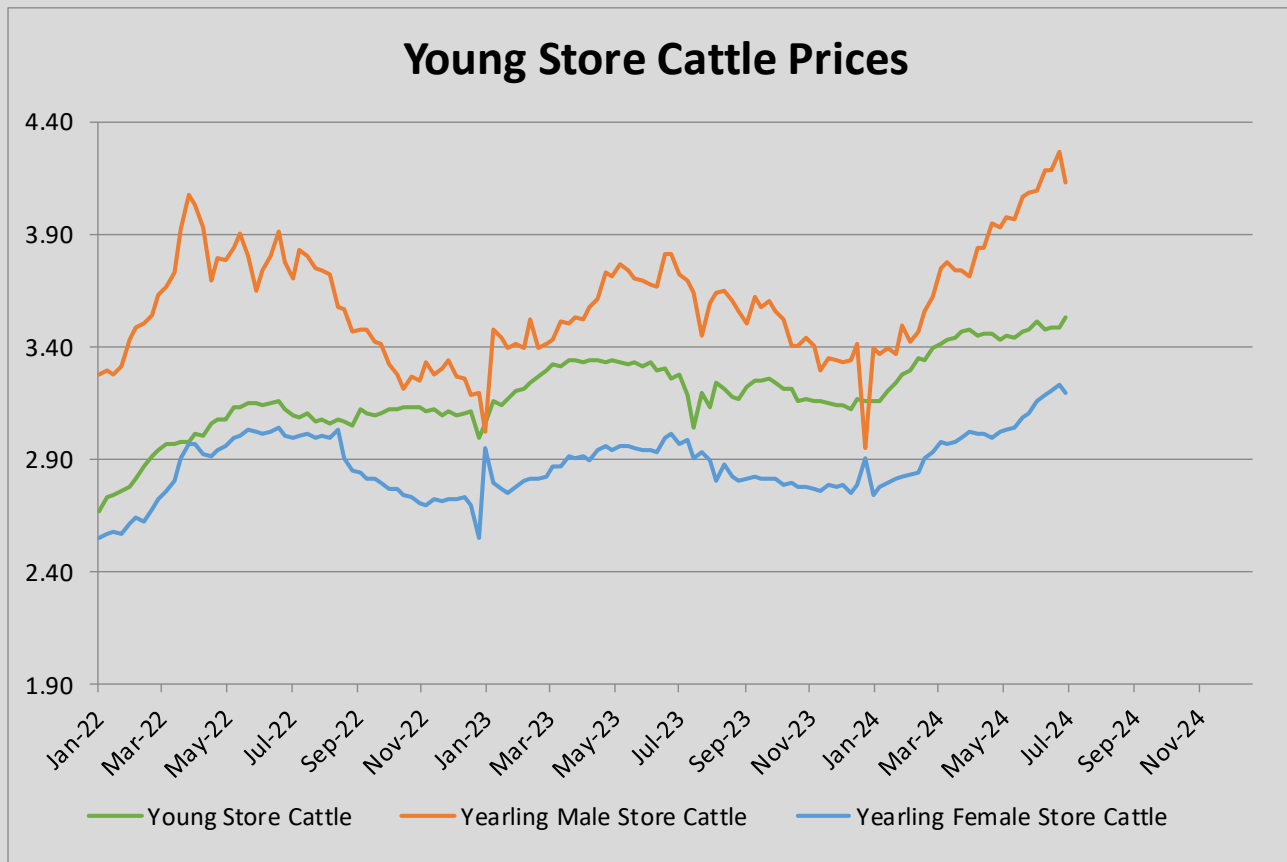
Male Calves aged between 8 days and 4 weeks															
	BE	DK	DE	IE	ES	FR	IT	NL	AT	PL	PT	RO	SI	SE	EU
<b>Male Calves Dairy type</b>															
Market Price € / head	124.50	103.90	172.14	155.06	116.62	128.15	182.09	164.00	190.73	200.92		46.26			153.02
Previous week market price	124.50	103.91	174.02	129.27	116.63	126.09	181.37	164.00	203.40	200.39		42.60			150.76
Difference with previous week	0.00	-0.00	-1.88	25.79	-0.01	2.06	0.72	0.00	-12.67	0.52		3.66			2.26
% of EU average	81	68	112	101	76	84	119	107	125	131		30			
Coefficient	3.10	3.17	21.70	8.60	4.61	18.40	10.62	8.94	3.14	11.60		6.13			100
<b>Male Calves Beef type</b>															
Market Price € / head	397.22		264.80	229.70	222.63	292.43	265.83	271.00	474.90	294.02		429.37			285.14
Previous week market price	378.89		273.80	217.95	221.43	292.63	265.77	271.00	492.80	293.26		435.78			285.47
Difference with previous week	-18.33		-9.00	11.75	1.20	-0.20	0.06	0.00	-17.90	0.76		-6.41			-0.33
% of EU average	139		93	81	78	103	93	95	167	103		151			
Coefficient	3.57		17.29	9.28	11.30	27.46	9.18	6.31	2.77	8.49		4.35			100

Store Cattle															
	BE	DK	DE	IE	ES	FR	IT	NL	AT	PL	PT	RO	SI	SE	EU
<b>Young Store Cattle</b>															
Market Price € / kg	4.93			2.96	3.65	3.78	3.66		2.96		3.37			2.39	3.53
Previous week market price	4.93			2.75	3.64	3.80	3.66		2.79		3.35			2.42	3.48
Difference with previous week	0.00			0.21	0.01	-0.02	0.00		0.17		0.02			-0.03	0.04
% of EU average	140			84	103	107	104		84		96			68	
Coefficient	5.45			20.34	7.69	44.62	7.21		5.73		4.37			4.59	100
<b>Yearling Male Store Cattle</b>															
Market Price € / kg	4.61		6.86	2.36		3.61	4.07		2.35		3.36			2.59	4.13
Previous week market price	4.61		7.24	2.38		3.68	4.06		2.69		3.18			2.77	4.26
Difference with previous week	0.00		-0.38	-0.02		-0.07	0.01		-0.34		0.18			-0.18	-0.14
% of EU average	112		166	57		87	99		57		81			63	
Coefficient	2.85		25.17	24.15		21.50	16.48		4.92		1.46			3.47	100
<b>Yearling Female Store Cattle</b>															
Market Price € / kg	3.53		3.82	2.39		3.27	3.01		2.48		2.87			2.43	3.19
Previous week market price	3.53		4.03	2.34		3.25	3.01		2.54		2.83			2.28	3.23
Difference with previous week	0.00		-0.21	0.05		0.02	0.00		-0.06		0.04			0.15	-0.04
% of EU average	111		120	75		102	94		78		90			76	
Coefficient	5.14		25.14	14.29		32.54	13.84		3.79		2.18			3.09	100

Calves Slaughtered before 8 months															
	BE	DK	DE	IE	ES	FR	IT	NL	AT	PL	PT	RO	SI	SE	EU
Market Price € / 100 kg	693.00		535.00			682.70	572.38	563.95			499.65		465.63		605.88
Previous week market price	694.55		541.00			678.80	559.25	563.95			487.87		449.54		603.37
Difference with previous week	-1.55		-6.00			3.90	13.13	0.00			11.78		16.09		2.51
% of EU average	114		88			113	94	93			82		77		
Coefficient	7.99		7.91			28.82	15.97	37.45			1.48		0.37		100



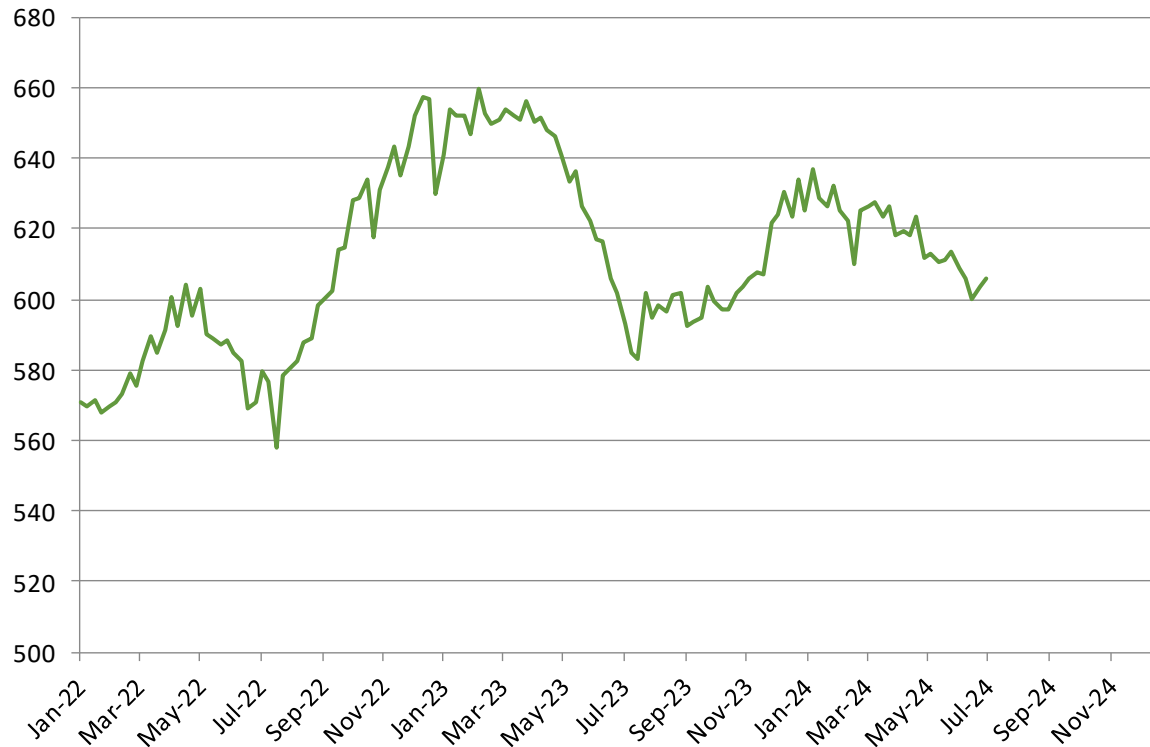
<b>Male Rearing Calves Beef type</b>	<b>Male Rearing Calves Dairy type</b>
Price in Week 27 <b>285.14</b>	Price in Week 27 <b>153.02</b>
Change y/y <b>+0.7%</b>	Change y/y <b>+3.8%</b>



<b>Young Store Cattle Price in</b>	<b>Week 27</b>	<b>3.53</b>	<b>Yearling Male Store Cattle Price</b>	<b>4.13</b>
	Change y/y	+7.7%	Change y/y	+11.0%
<b>Yearling Female Store Cattle Price</b>		<b>3.19</b>		
	Change y/y	+7.5%		



### Calves Slaughtered before the Age of 8 Months



**Price in Week 27** 605.88 € / 100 kg of carcasse weight  
Change y/y +2.2%