



➔ Live Animal Prices

Last update : 18.04.2024

Prices not received :

Semaine / Week : 15

du / from : 08.04.24

au / to : 14.04.24

PRIX DE MARCHÉ NATIONAUX et COMMUNAUTAIRES UE (en Euro & en % du prix de référence)

NATIONAL and COMMUNITY EU MARKET PRICES (in Euro & as % of the reference price)

(Euro/100 kg PC/DW)	YOUNG MALE BOVINES 12>24 m - CATEGORIE A						BULLOCKS - CATEGORIE C						YOUNG BOVINES 8>12 m - CATEGORIE Z						CATEGORIE A/C/Z																		
	U2+U3		R2+R3		O2+O3		U+R+O		Change on last week		%		U2+U3+U4		R3+R4		O3		U+R+O		Change on last week		%		R3		% of ref. price		Change on last week		%						
	U	R	O	URO			U	R	O	URO			U	R	O	URO			U	R	O	URO			R3												
Prix moyens	507.80	497.47		502.33	+ 2.41	+0.5%	403.43	525.41	539.90	530.46	- 0.46	-0.09%	525.81	517.28		503.82	- 2.07	-0.41%	506.00	227.52	+ 1.17	+0.2%															
Average prices	507.80	497.47		502.33	+ 2.41	+0.5%	403.43	525.41	539.90	530.46	- 0.46	-0.09%	525.81	517.28		503.82	- 2.07	-0.41%	506.00	227.52	+ 1.17	+0.2%															
BE	468.10	438.22		464.20	+ 0.38	+ 0.1%													464.20						464.20		+ 0.38	0.1%									
BG		454.47		454.47		<i>idem</i>													454.47						454.47												
CZ	453.12	453.77	c	c															c	c	c				c												
DK		417.47	400.49	407.38	+ 1.59	+ 0.4%							439.71	454.80	450.60	- 2.73	- 0.6%							438.33		- 1.50	- 0.3%										
DE	469.18	483.74		476.29	- 0.38	- 0.1%							456.20		456.20										476.01		- 0.37	- 0.1%									
EE		c		c									c		c										c												
IE							506.93	524.26	548.00	535.05	- 1.15	- 0.2%													535.05		- 1.15	- 0.2%									
EL		422.20	469.50	443.20	- 10.00	- 2.2%							475.19	512.55	498.06	+ 7.11	1.4%							469.74		- 1.72	- 0.4%										
ES	526.08	531.29		527.88	+ 2.08	+ 0.4%							524.44	534.40	512.55	530.49	- 2.90	- 0.5%							529.28		- 0.59	- 0.1%									
FR	522.90	524.77	500.69	520.21	- 3.20	- 0.6%		534.00		507.61	+ 2.97	0.6%													518.26		- 2.24	- 0.4%									
HR	525.93	506.86		511.44	+ 3.80	+ 0.7%																			511.44		+ 4.06	0.8%									
IT	555.83	497.07	446.37	545.83	+ 3.52	+ 0.6%							568.46	530.25	550.25	549.49	- 17.44	- 3.1%							546.01		+ 2.46	0.5%									
CY					<i>idem</i>	<i>idem</i>																															
LV		374.61		374.61	- 64.80	- 14.7%							348.20		348.20	+ 91.46	35.6%							369.18		- 32.69	- 8.1%										
LT		416.19	414.72	415.17	+ 3.55	+ 0.9%							c		c										c												
LU	c	c		c																					c												
HU		205.75		205.75	+ 1.40	+ 0.7%																			205.75		+ 1.40	0.7%									
MT																																					
NL		372.78	166.78	267.88	+ 52.27	+ 24.2%							470.04	440.30	445.39	+ 1.71	0.4%							404.60		+ 13.33	3.4%										
AT	467.06	477.17		470.39	- 1.32	- 0.3%							538.70	520.86	531.42	- 20.67	- 3.7%							475.04		- 2.80	- 0.6%										
PL		495.16	513.90	507.65	+ 13.57	+ 2.7%								488.80	449.19	459.77	- 8.81	- 1.9%							507.25		+ 13.38	2.7%									
PT	504.84	493.96		500.06	- 2.82	- 0.6%							488.32	467.03		470.53	+ 4.14	0.9%							486.06		+ 0.48	0.1%									
RO	417.14	446.42	440.28	441.61	- 16.06	- 3.5%							406.22	437.08	433.95	434.20	+ 8.04	1.9%							436.18		+ 1.60	0.4%									
SI	482.74	489.70	492.08	487.69	+ 0.58	+ 0.1%								433.60	473.65	444.89	+ 2.90	0.7%							484.16		+ 0.77	0.2%									
SK		470.41	c	c											c	c									c												
FI		479.04	478.71	478.80	+ 2.07	+ 0.4%																			478.80		+ 2.07	0.4%									
SE		528.52	548.05	539.85	+ 12.68	+ 2.4%								530.65		530.65	- 4.65	- 0.9%							539.30		+ 11.65	2.2%									

Source : Member States



Meat Market Observatory – Beef and Veal

PRI.EU.BOV

EU Weekly Beef Carcase Prices



18.04.2024
08.04.24
du / from :
au / to : 14.04.24

Prices not received in :

PRIX DE MARCHÉ - ETATS MEMBRES
MARKET PRICES - MEMBER STATES

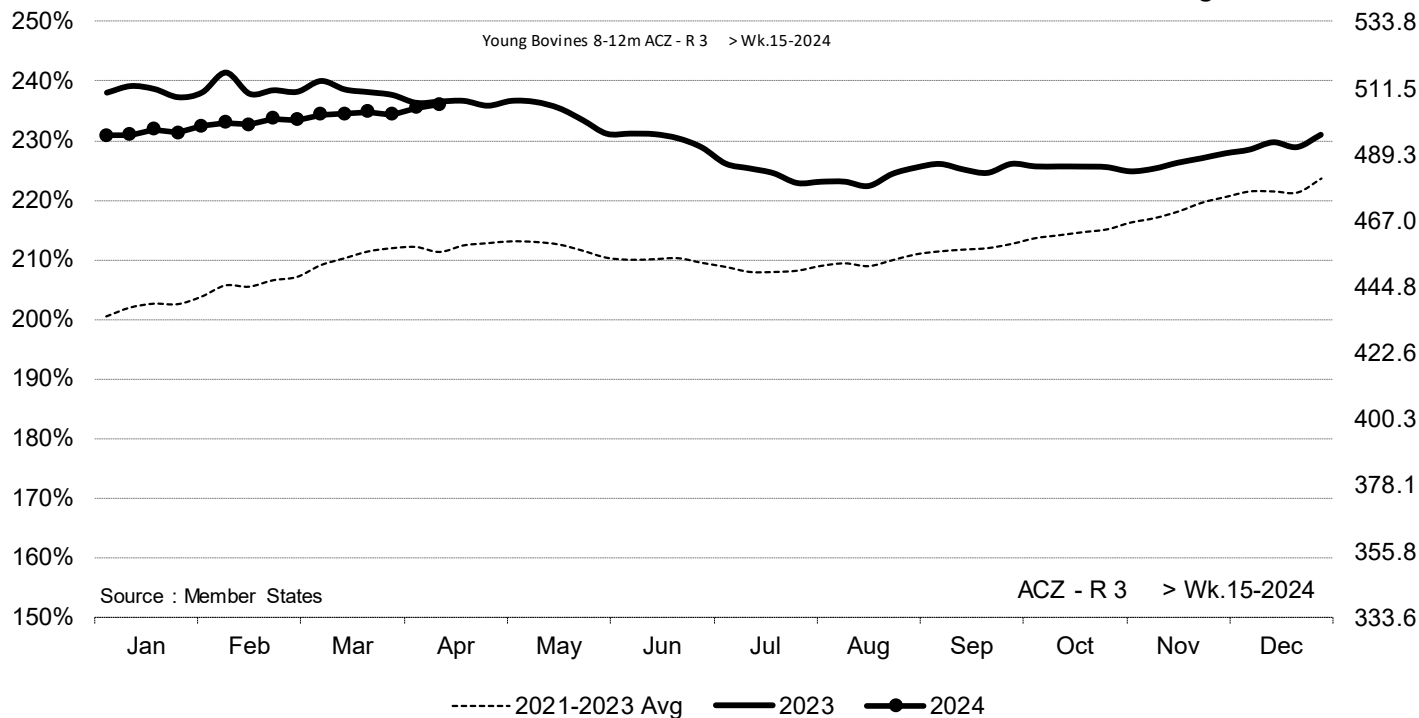
(€/100kg PC/DW)	BE	BG	CZ	DK	DE	EE	IE	EL	ES	FR	HR	IT	CY	LV	LT	LU	HU	MT	NL	AT	PL	PT	RO	SI	SK	FI	SE	EU	Change last week	%	UK						
Young Bovines 8-12m Z-U2				c	424.0				517.9											473.0	558.1		520.6	429.8				536.5	553.2	-1.52	-0.27%						
Young Bovines 8-12m Z-U3					395.9				510.0											469.0	571.4		500.9					519.1	545.6	+1.22	+0.22%						
Young Bovines 8-12m Z-R2				c	445.2	463.0			480.3	482.3	536.8									472.0	517.9	492.7	468.5	445.7	431.0			537.6	516.8	-8.31	-1.58%						
Young Bovines 8-12m Z-R3					440.5				512.8		537.9									472.0	542.2	494.8	479.8	431.8	511.7			531.9	523.7	-1.85	-0.35%						
Young Bovines 8-12m Z-O2		154.6	430.6	449.4					426.9	490.0	486.3									401.0	c	437.6	444.2	404.8	452.8	c		545.7	458.3	+7.03	+1.56%						
Young Bovines 8-12m Z-O3		455.3							466.5		489.9									440.0	c	393.7	429.7	483.4				563.2	464.3	+2.37	+0.51%						
Young Bovines 8 > 12 m		455.3			433.6	452.6			488.0	487.0	522.8			559.5	336.5				428.1		445.6	455.9	417.8	443.1			546.4	500.1	+0.73	+0.15%							
Young Bulls 12>24m A-U2	496.0		479.4	431.0	495.1				514.5	452.5	553.9	559.0	595.7	588.3	473.1	453.7				426.0	490.6	445.5	523.1	442.9	507.0	c	509.5	524.3	534.7	-2.84	-0.53%						
Young Bulls 12>24m A-U3	481.3		463.8	428.3	491.6				518.9	420.4	553.4	542.0	535.3	577.9						400.0	492.1	515.7	542.3	432.7	506.9	c	511.7	532.2	523.1	+3.92	+0.75%						
Young Bulls 12>24m A-R2	451.4	516.4	456.8	418.7	490.1				506.6	420.0	536.3	534.0	504.5	505.9	374.0	426.0	c	208.8		334.0	481.0	502.5	492.9	451.5	493.3	480.5	481.8	526.2	500.4	-1.17	-0.23%						
Young Bulls 12>24m A-R3	406.8	409.3	471.7	419.9	485.2				508.7	447.3	536.4	524.0	513.9	490.4	429.2	413.0				423.0	485.5	495.3	508.6	448.3	496.5	451.5	486.3	534.2	503.7	+0.89	+0.18%						
Young Bulls 12>24m A-O2	411.1	443.5	437.5	376.7	446.9				483.4	431.4	495.3	474.0	489.4	413.6	450.0	351.4	389.9	c	213.6	142.0	447.5	494.6	430.9	418.6	470.4	437.5	453.3	515.7	469.8	+7.44	+1.61%						
Young Bulls 12>24m A-O3	367.4	494.7			380.7	456.9			493.3	462.0	483.0	473.0	528.9	457.1	425.0	404.0	402.5			147.9	188.0	456.3	477.0	432.8	427.6	485.4	c	462.5	525.3	468.0	+0.56	+0.12%					
Young Bulls 12 > 24 m	481.9	463.4			402.8	484.9			505.6	438.0	538.5	532.1	516.8	572.8	449.7	367.2	406.2		193.6	348.8	487.1	490.6	502.0	429.5	495.0	c	466.6	525.4	506.9	+0.90	+0.18%						
Bulls B R3	368.1				310.9	423.6			477.3					490.5	495.3					426.4	480.2	380.0	456.8	486.5	c	463.3	506.0	474.0	-5.12	-1.07%							
Bulls	368.1				310.9	423.6			477.3					490.5	495.3					426.4	480.2	380.0	456.8	486.5	c	463.3	506.0	474.0	-5.12	-1.07%							
Bullocks C-U2									525.0					520.1						493.2	488.2	520.0	405.7					524.3	-3.85	-0.73%							
Bullocks C-U3					550.8				526.8					485.4						526.2								563.9	528.3	-1.62	-0.31%						
Bullocks C-U4					562.2				524.0					534.0						523.0		700.0	505.1					584.8	525.5	-0.45	-0.09%						
Bullocks C-R3					442.5	560.1			519.5			534.0		560.0						512.8			450.1	441.3	506.7			528.5	522.2	+0.50	+0.10%						
Bullocks C-R4					417.4	540.0			519.7					560.0						512.8			400.0	445.7				525.1	518.4	-2.20	-0.42%						
Bullocks C-O3					436.9	432.0			510.0			464.0		375.1						453.4			450.0	385.3	471.7	c		509.0	499.4	+0.89	+0.18%						
Bullocks C-O4					441.0				515.5											c		420.0	416.2					497.1	514.6	+1.06	+0.21%						
Bullocks					437.3	522.5			516.3			489.4		509.3								447.3	433.0	498.1		c	513.4	513.0	+0.11	+0.02%							
Cows D-R3	469.2	375.6	378.2	388.8	422.0				466.7	286.0	377.7	544.0	428.8	427.5						377.0	398.9	439.4	384.0	350.7	366.0	c	356.4	501.2	489.7	+1.89	+0.39%						
Cows D-R4					443.3	398.6	391.6	424.5	c	459.5	438.7	532.0	419.4	449.1						400.8	376.8	c	174.5	443.0	407.6	437.8	362.7	371.5	387.6	c	340.4	498.0	444.1	+8.97	+2.06%		
Cows D-O2	383.3	388.8	342.8	362.4	399.0				c	422.2	269.2	351.7	487.0	402.3	371.4					336.7	334.3	c	175.8	398.0	358.3	443.2	318.3	385.9	306.1	253.7	317.3	465.6	397.0	+14.27	+3.73%		
Cows D-O3	402.5	375.1	339.9	378.2	409.3				c	422.7	265.0	366.7	450.0	378.2	410.9					339.4	356.9	c	188.0	424.0	362.3	405.9	314.0	386.2	303.9	313.2	325.9	475.0	411.3	+2.21	+0.54%		
Cows D-O4	409.0	363.4	351.4	375.6	412.4				c	422.0		447.5	436.0							369.7	371.2	c	188.6	444.0	342.6	423.0	305.5	391.9	329.2	c	288.8	453.3	413.0	+1.73	+0.42%		
Cows D-P2	325.6	343.3	235.5	328.8	339.9				c	381.2	231.0	315.3	397.0	386.1	323.9	256.0				320.1	286.3	c	130.0	351.0	278.3	427.0	265.5	376.0	285.9	180.1	293.5	422.9	348.9	+6.45	+1.88%		
Cows D-P3	360.1	339.1	209.0	356.9	350.7				c	404.7	223.4	311.2	419.0	450.0	368.5	260.0				323.3	298.2	c	254.1	377.0	255.7	359.2	237.0	397.2	289.7	264.7	308.9	456.7	394.0	+1.88	+0.48%		
Cows	367.4	366.8	312.3	356.3	396.6				414.1	275.4	361.3	466.0	407.5	368.9	257.2	345.5	324.2		172.0	401.3	364.2	423.6	307.5	383.3	320.0	c	305.9	461.9	391.2	+4.62	+1.20%						
Heifers E-U2	553.1				423.2	465.8			534.2		559.9			580.4								494.1	382.5	525.7	444.8	471.7	c	498.8	536.0	563.9	-13.20	-2.29%					
Heifers E-U3	516.6				469.5	456.8			538.4		551.5	592.0	533.8	606.9						463.2	377.0	c		489.4	497.6	532.9	384.7	498.3	c	505.0	542.2	560.3	+6.87	+1.24%			
Heifers E-U4					448.0	452.4			537.8					538.0	665.1					428.1		c		476.5	509.8			451.2	499.7		537.7	490.2	+1.14	+0.03%			
Heifers E-R2	503.2	375.9	381.2	428.6	449.9				c	520.8	455.2	555.6	538.0	531.9	514.6					338.2	c	c	205.5	448.0	469.0	515.2	524.7	432.5	438.4	c	481.1	487.4	503.8	+0.10	+0.28%		
Heifers E-R3	483.6	375.9	369.1	440.8	451.1				c	525.4	509.1	551.0	529.7	581.6						415.3	421.8	c	174.0	219.0	478.5	482.8	530.0	452.9	477.8	c	488.3	525.6	510.5	-1.89	-0.37%		
Heifers E-R4					431.1	373.3	438.9	448.0		c	529.0		578.6	532.0	527.3	530.9					347.1	389.2	c	185.1	227.0	466.8	507.5	510.5	465.8	476.6	c	477.6	520.7	511.0	+3.19	+0.63%	
Heifers E-O2	376.3	368.2	339.0	384.3	386.3				c	496.0	424.5	449.1		477.0	377.6					30																	



ACZ - R 3 > Wk.15-2024

% of Reference Price

€/100 kg cwe



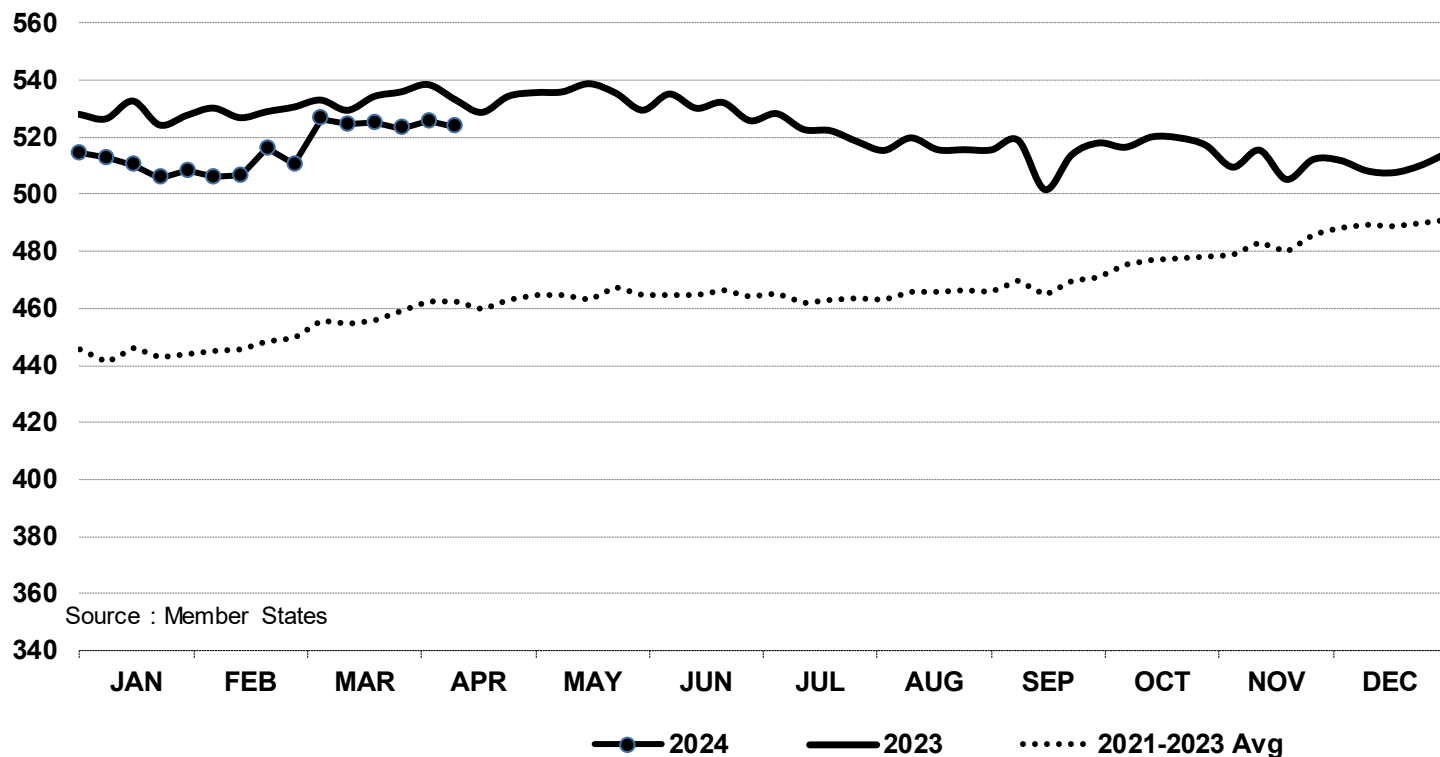
Price in week 15 : **506.00**
 % change y/y : **- 0.22%**
 % Ref. Price in wk 0 : **228.0%**

Average price in March 2024 : **502.72**
 % change y/y : **- 1.67%**



In € / 100 kg

Young Bovines 8-12m Z - R 3 > Wk.15-2024



Source : Member States

Price in week 15 : **523.67**

14/03/2024

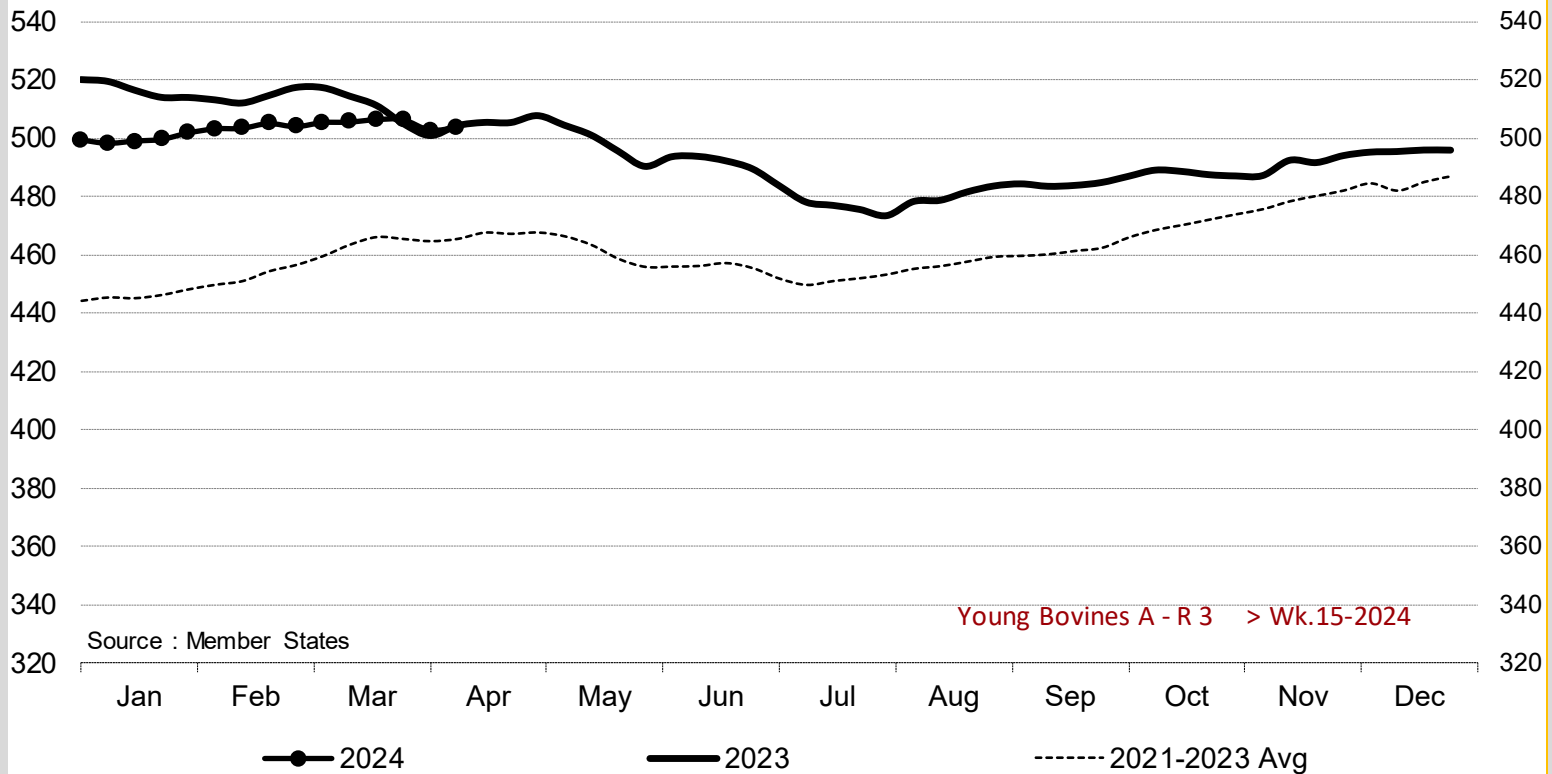
Average price in March 2024 : **523.36**

% change y/y : **- 1.8%**

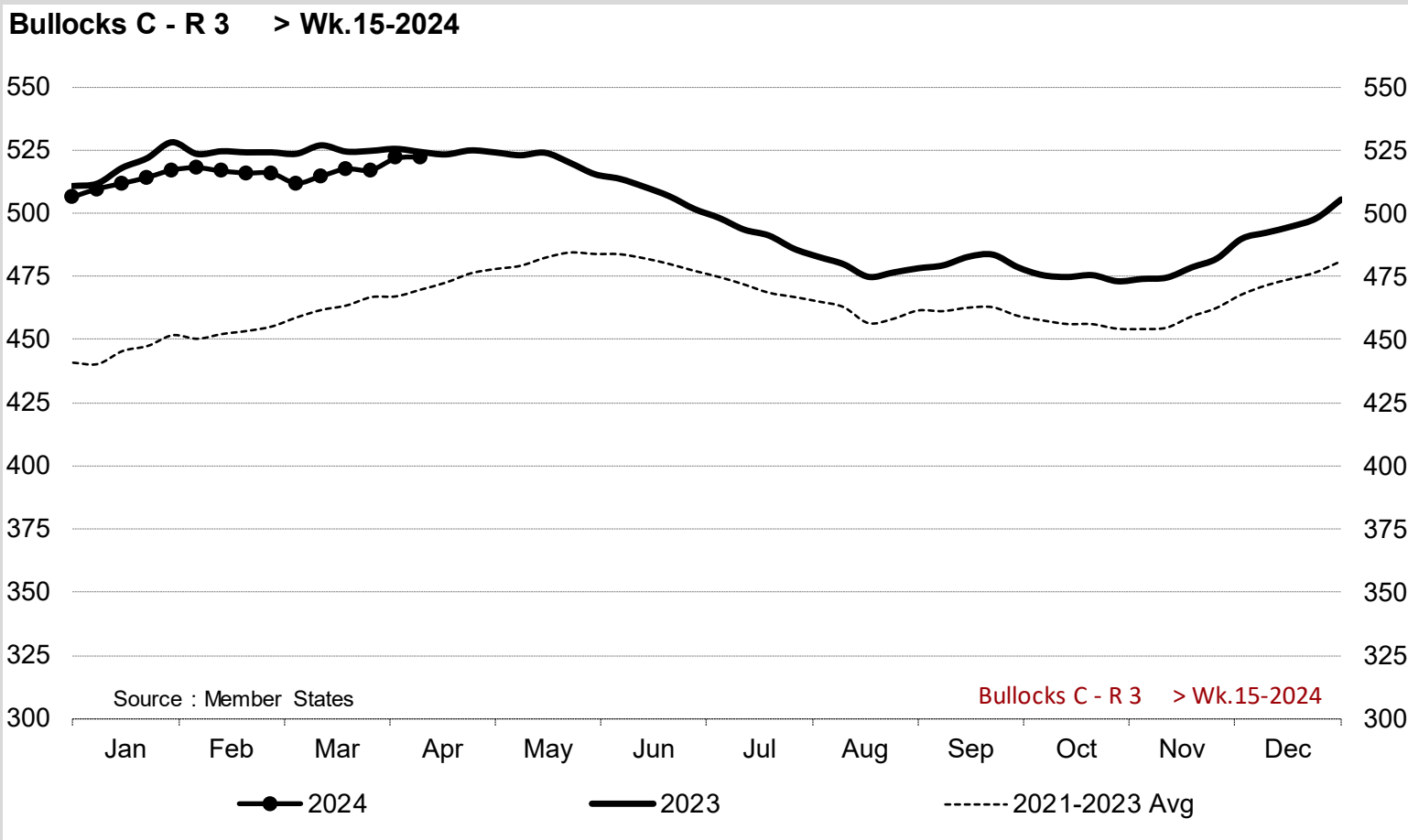
% change y/y : **- 1.7%**



Young Bovines A - R 3 > Wk.15-2024



Price in week 15 : **503.75** Average price in March 2024 : **505.83**
 % change y/y : **- 0.1%** % change y/y : **- 1.5%**

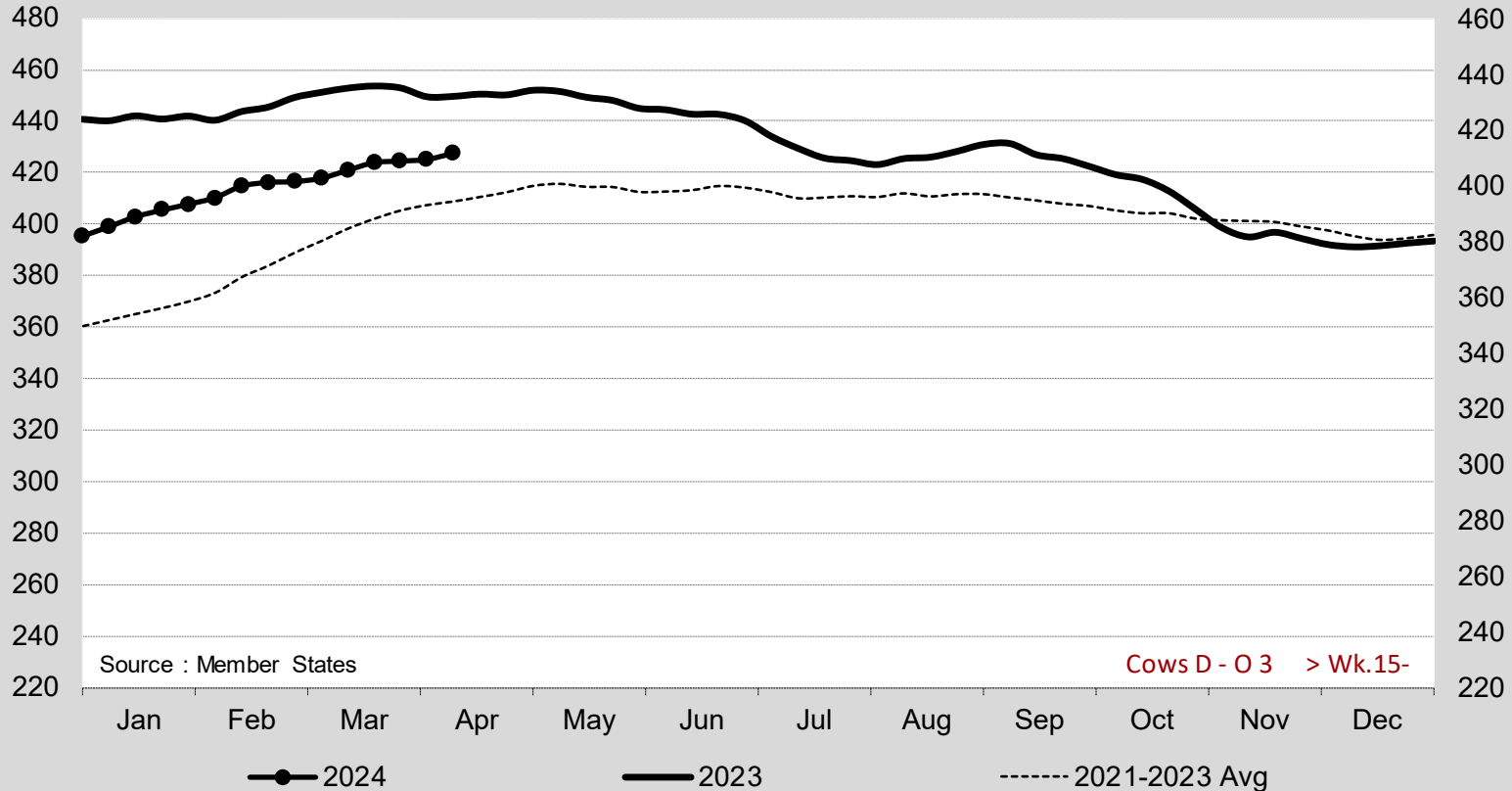


Price in week 15 : **522.22**
 % change y/y : **- 0.4%**

Average price in March 2024 : **515.28**
 % change y/y : **- 1.8%**



Cows D - O 3 > Wk.15-2024



Source : Member States

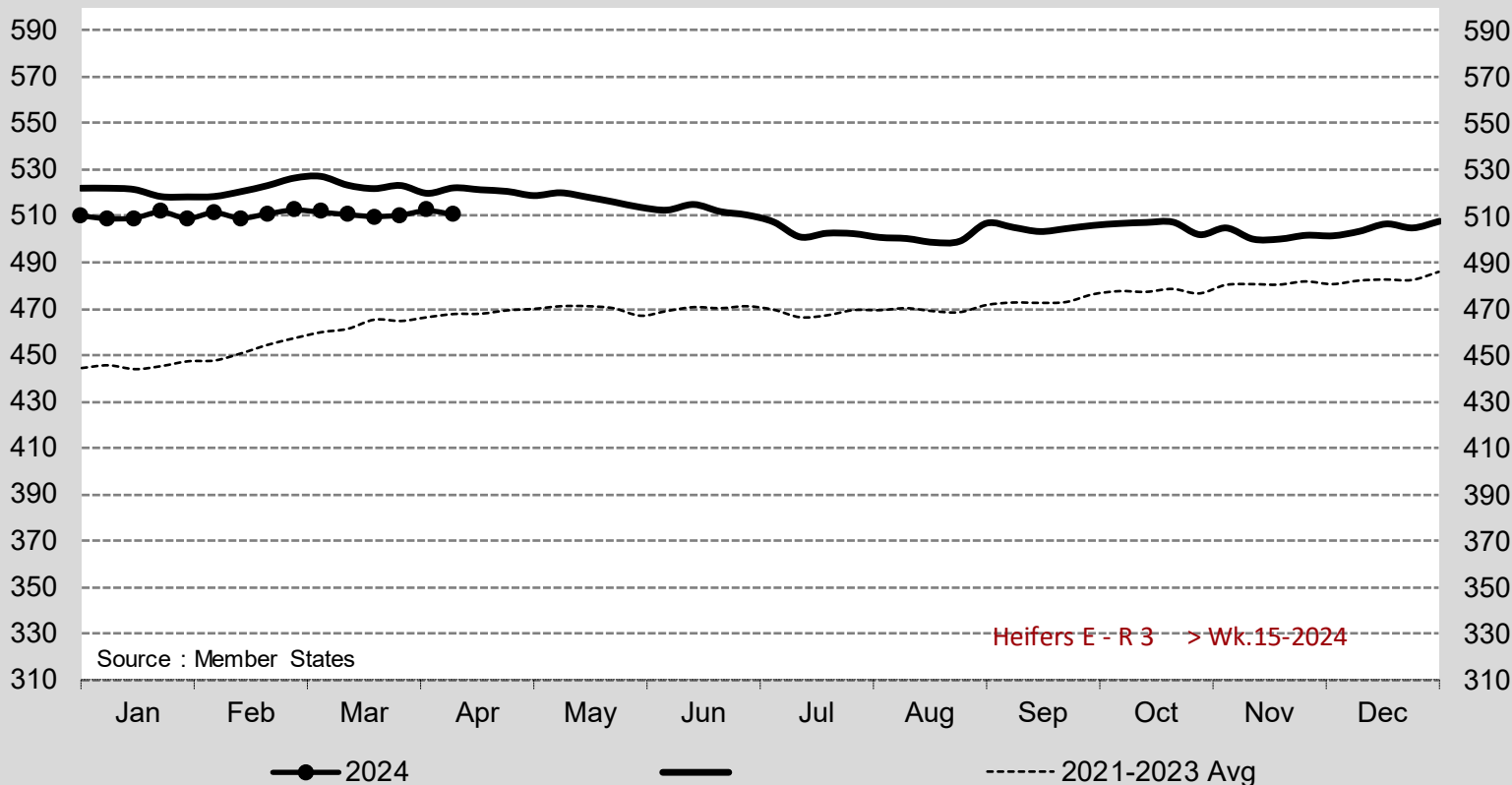
Cows D - O 3 > Wk.15-

Price in week 15 : **411.30**
 % change y/y : **- 4.7%**

Average price in March 2024 : **405.57**
 % change y/y : **- 6.6%**



Heifers E - R 3 > Wk.15-2024



Source : Member States

Heifers E - R 3 > Wk.15-2024

Price in week 15 : **510.54**
 % change y/y : **- 2.2%**

Average price in March 2024 : **510.74**
 % change y/y : **- 2.6%**

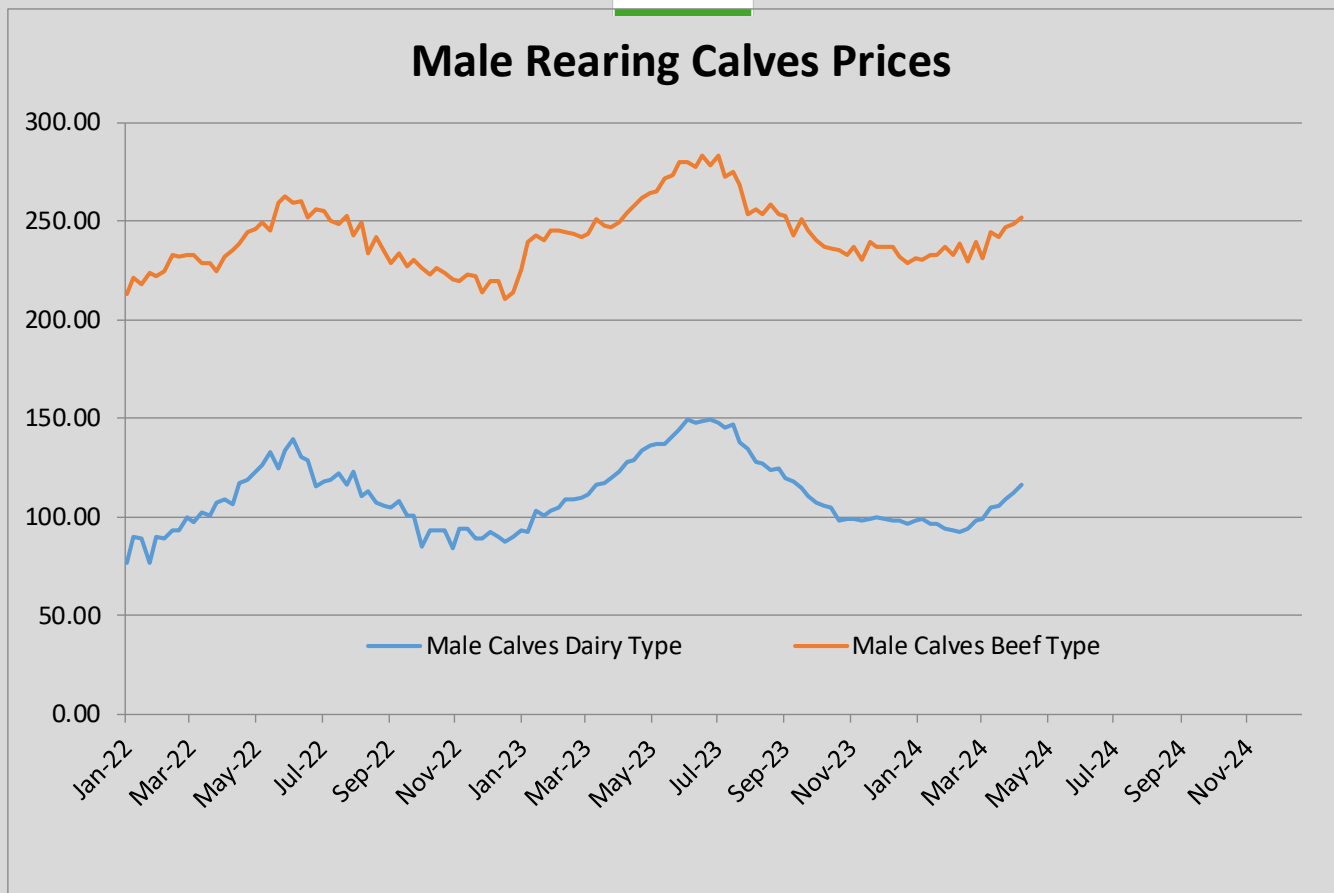


European Commission
E3 - Animal Products

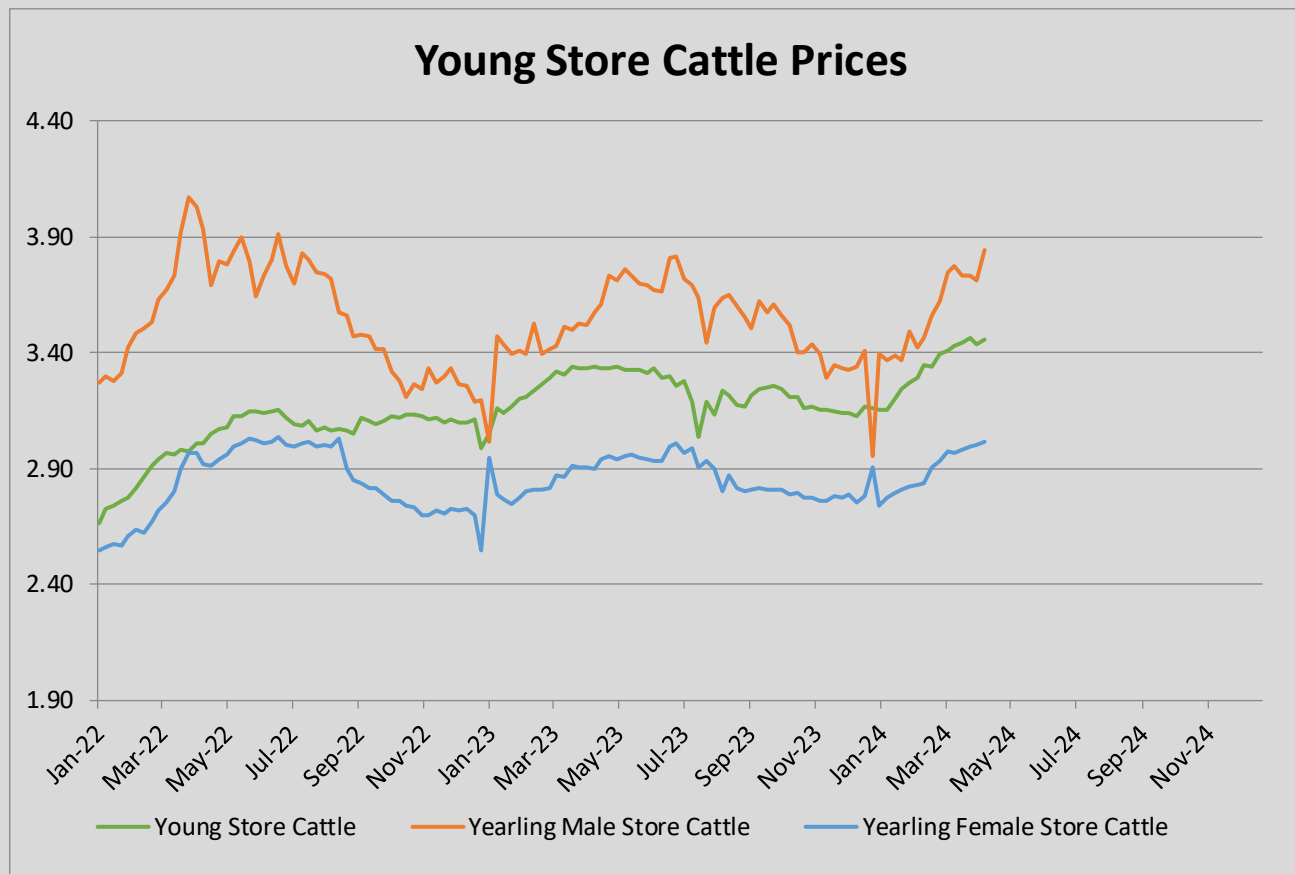
Week 15 from 08/04/2024
to 14/04/2024

Prices of Live Bovine Animals

Male Calves aged between 8 days and 4 weeks															
	BE	DK	DE	IE	ES	FR	IT	NL	AT	PL	PT	RO	SI	SE	EU
Male Calves Dairy type															
Market Price € / head	73.42	100.54	113.70	95.46	111.42	103.05	131.86	98.00	184.16	199.50		39.97			116.57
Previous week market price	73.42	100.56	114.45	84.39	105.94	95.50	129.22	96.00	121.50	198.00		45.25			111.86
Difference with previous week	0.00	-0.01	-0.75	11.07	5.48	7.55	2.64	2.00	62.66	1.50		-5.28			4.71
% of EU average	63	86	98	82	96	88	113	84	158	171		34			
Coefficient	3.10	3.17	21.70	8.60	4.61	18.40	10.62	8.94	3.14	11.60		6.13			100
Male Calves Beef type															
Market Price € / head	348.89		219.00	152.08	213.31	266.39	245.12	195.00	446.57	307.63		391.58			252.02
Previous week market price	348.89		214.40	172.45	213.21	260.63	243.34	193.00	385.12	305.32		370.02			248.39
Difference with previous week	0.00		4.60	-20.37	0.10	5.76	1.78	2.00	61.45	2.32		21.55			3.62
% of EU average	138		87	60	85	106	97	77	177	122		155			
Coefficient	3.57		17.29	9.28	11.30	27.46	9.18	6.31	2.77	8.49		4.35			100
Store Cattle															
	BE	DK	DE	IE	ES	FR	IT	NL	AT	PL	PT	RO	SI	SE	EU
Young Store Cattle															
Market Price € / kg	5.07			2.95	3.58	3.67	3.61		2.80		3.30			2.28	3.46
Previous week market price	5.07			2.90	3.58	3.64	3.59		2.65		3.32			2.26	3.44
Difference with previous week	0.00			0.05	0.00	0.03	0.02		-0.05		-0.02			0.00	0.02
% of EU average	147			85	104	106	104		81		95			66	
Coefficient	5.45			20.34	7.69	44.62	7.21		5.73		4.37			4.59	100
Yearling Male Store Cattle															
Market Price € / kg	4.72		5.73	2.63		3.30	3.95		2.73		3.35			2.44	3.84
Previous week market price	4.72		5.35	2.60		3.28	3.89		2.53		3.15			2.40	3.71
Difference with previous week	0.00		0.38	0.03		0.02	0.06		0.20		0.20			0.04	0.13
% of EU average	123		149	68		86	103		71		87			64	
Coefficient	2.85		25.17	24.15		21.50	16.48		4.92		1.46			3.47	100
Yearling Female Store Cattle															
Market Price € / kg	3.53		3.06	2.61		3.20	2.99		2.62		2.96			2.32	3.01
Previous week market price	3.53		3.06	2.65		3.20	2.99		2.51		2.67			2.11	3.00
Difference with previous week	0.00		0.00	-0.04		0.00	0.00		0.11		0.29			0.20	0.01
% of EU average	117		102	87		106	99		87		98			77	
Coefficient	5.14		25.14	14.29		32.54	13.84		3.79		2.18			3.09	100
Calves Slaughtered before 8 months															
	BE	DK	DE	IE	ES	FR	IT	NL	AT	PL	PT	RO	SI	SE	EU
Market Price € / 100 kg	710.15		570.22			712.40	544.50	577.95			479.94		461.15		619.43
Previous week market price	710.15		572.00			710.90	541.00	577.95			464.73		457.24		618.34
Difference with previous week	0.00		-1.78			1.50	3.50	0.00			15.21		3.91		1.09
% of EU average	115		92			115	88	93			77		74		
Coefficient	7.99		7.91			28.82	15.97	37.45			1.48		0.37		100



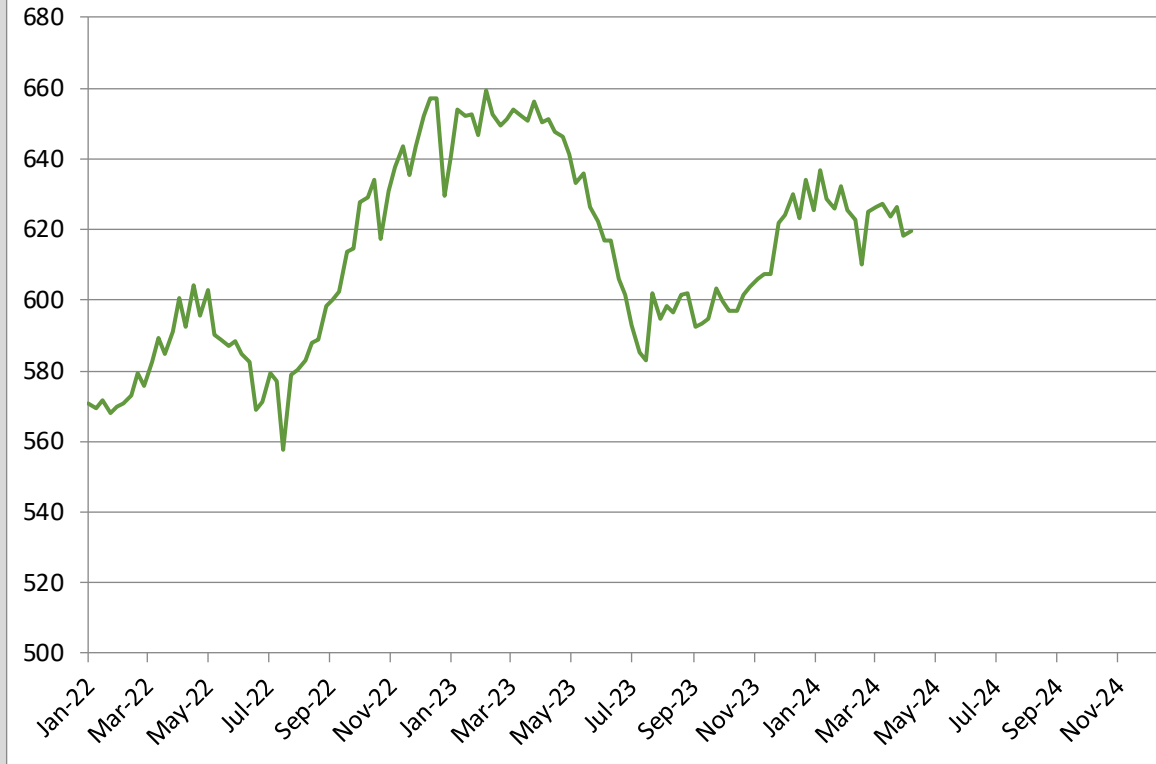
Male Rearing Calves Beef type		Male Rearing Calves Dairy type	
Price in Week 15	252.02	Price in Week 15	116.57
Change y/y	-1.0%	Change y/y	-8.8%



Young Store Cattle Price in	Week 15	3.46	Yearling Male Store Cattle Price	3.84
	Change y/y	+3.6%	Change y/y	+7.4%
Yearling Female Store Cattle Price		3.01		
	Change y/y	+4.1%		



Calves Slaughtered before the Age of 8 Months



Price in Week 15 **619.43 € / 100 kg of carcasse weight**
Change y/y -4.9%