



➔ Live Animal Prices

Last update : 18.07.2024

Prices not received : EL, NL, MT, PL

Semaine / Week : 28

du / from : 08.07.24

au / to : 14.07.24

PRIX DE MARCHÉ NATIONAUX et COMMUNAUTAIRES UE (en Euro & en % du prix de référence)

NATIONAL and COMMUNITY EU MARKET PRICES (in Euro & as % of the reference price)

(Euro/100 kg PC/DW)	YOUNG MALE BOVINES 12>24 m - C A T E G O R I E A						BULLOCKS - C A T E G O R I E C						YOUNG BOVINES 8 >12 m - C A T E G O R I E Z						C A T E G O R I E A / C / Z								
	U2+U3		R2+R3	O2+O3	U+R+O	Change on last week	%	U2+U3+U4		R3+R4	O3	U+R+O	Change on last week	%	U2+U3		R2+R3	O2+O3	U+R+O	Change on last week	%	R3	% of ref. price	Change on last week	%		
	Average prices																										
	505.07	502.16		500.37	+0.82	+0.2%	392.51	518.50	529.99	523.18	-5.95	-1.13%	522.96	518.04		506.31	+0.28	+0.1%	504.25	226.73	-0.09	-0.02%					
	U	R	O	URO			U	R	O	URO			U	R	O	URO						R3					
BE	485.38	440.81		479.48	+3.61	+0.8%																479.48		+3.61	0.8%		
BG		509.96		509.96		idem																509.96					
CZ	c	463.02	449.63	c											c	c	c					c					
DK		418.27	408.00	412.55	+3.08	+0.8%									465.56	479.25	474.89	-2.15	-0.5%				458.76		+0.90	0.2%	
DE	479.38	492.36		485.77	-2.60	-0.5%																485.77		-2.60	-0.5%		
EE		c		c											c	c						c					
IE							500.12	515.81	534.22	524.23	-7.12	-1.3%											524.23		-7.12	-1.3%	
EL		434.34	451.91	433.86		idem									489.56	512.85	489.32					461.97		+1.29	0.3%		
ES	522.94	529.71		525.12	+2.20	+0.4%									523.37	530.73	512.85	527.75	+0.05	0.0%		526.48		+1.00	0.2%		
FR	511.92	515.72	502.14	511.71	-1.09	-0.2%	534.48	536.00		517.59	+0.25	0.0%										512.58		-0.92	-0.2%		
HR	516.97	533.64		529.67	+8.68	+1.7%									767.49		767.49					541.12		+9.39	1.8%		
IT	531.14	577.17	480.12	534.23	+3.86	+0.7%									542.89	577.81	616.10	575.43	+5.69	1.0%		536.83		+4.48	0.8%		
CY						idem																					
LV		373.25		373.25	-73.40	-16.4%									381.70		381.70	-28.69	-7.0%			375.01		-64.19	-14.6%		
LT		419.84	426.05	424.17	-6.76	-1.6%									c		c					c					
LU		c	c	c																							
HU		171.74		171.74	+0.36	+0.2%																	171.74		+0.36	0.2%	
MT																											
NL		342.34	128.25	235.78		idem									471.62	423.97	433.37					383.91		-4.06	-1.0%		
AT	478.74	489.33		482.29	+0.38	+0.1%									529.10	538.01	532.86	-9.68	-1.8%			486.16		-0.38	-0.1%		
PL		489.41	495.04	492.99	+4.04	+0.8%									446.16	458.25	456.84	+3.74	0.8%			492.68		+4.03	0.8%		
PT	502.74	486.45		495.58	-5.56	-1.1%									465.52	475.29	473.62	+13.52	2.9%			485.21		+3.52	0.7%		
RO	434.79	455.10	478.58	469.46	-2.46	-0.5%									435.74	444.22	442.99	-27.96	-5.9%			449.90		-21.31	-4.5%		
SI	488.69	505.20	498.05	498.74	+7.56	+1.5%									530.94	384.68	498.67	436.63	+53.70	14.0%		492.67		+10.42	2.2%		
SK		c	c	c													c	c									
FI		472.60	471.91	472.07	+2.82	+0.6%																	472.07		+2.82	0.6%	
SE		533.46	555.44	545.96	+5.22	+1.0%									542.54		542.54	+10.17	1.9%			545.77		+5.52	1.0%		

Source : Member States

Meat Market Observatory – Beef and Veal

PRI.EU.BOV

EU Weekly Beef Carcase Prices



18.07.2024
08.07.24
14.07.24

PRICES NOT REVENUES - H

PRIX DE MARCHÉ - ETATS MEMBRES
MARKET PRICES - MEMBER STATES

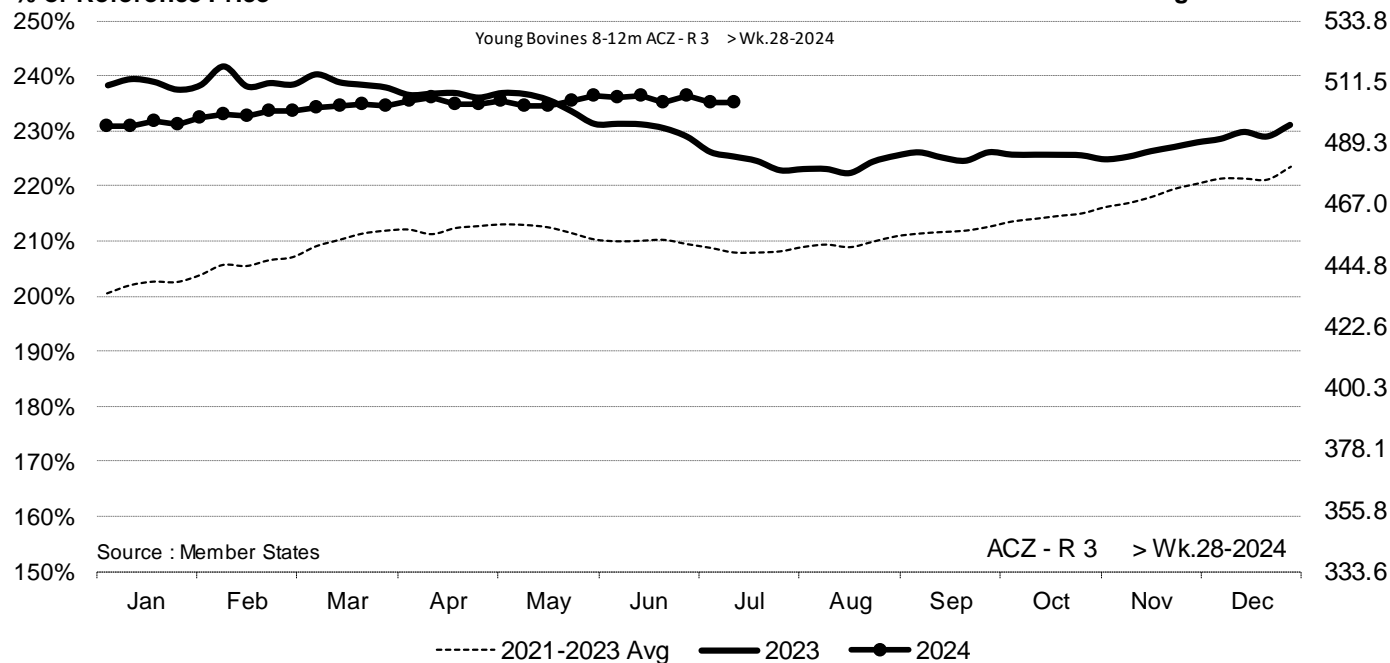
(€100kg PC/DW)	BE	BG	CZ	DK	DE	EE	IE	EL	ES	FR	HR	IT	CY	LV	LT	LU	HU	MT	NL	AT	PL	PT	RO	SI	SK	FI	SE	EU	Change last wee	%	UK	
Young Bovines 8-12m Z-U2				457.4			522.0		551.8		812.0	574.5				c	c		472.0	526.8		514.2		5617	c	512.6	549.6	-2.33	-0.42%			
Young Bovines 8-12m Z-U3				444.5			501.0		548.5			566.0							476.0	575.2		438.9				568.1	545.7	-1.41	-0.26%			
Young Bovines 8-12m Z-R2			c	469.0		c	505.7	498.3	532.6			591.6		388.2		c	c		473.0	536.9		482.8	420.0	3718		540.1	520.6	+0.81	+0.15%			
Young Bovines 8-12m Z-R3			c	468.6			505.7	486.8	534.7			540.9		378.2		c			474.0	555.0	446.2	474.4	487.1	5217		566.2	522.2	+2.98	+0.57%			
Young Bovines 8-12m Z-O2			c	453.3	438.6	c	484.6	485.4	474.9			589.5		382.2		c	c		386.0	416.8	438.4	450.1	423.4	476.7	c	529.5	451.8	-2.61	-0.58%			
Young Bovines 8-12m Z-O3				455.8	470.9	c	511.5	491.7	506.5			573.7		353.2		c			433.0	c	430.4	466.8	426.1	496.7		552.4	477.9	-0.05	-0.01%			
Young Bovines 8 > 12 m			c	458.9	443.0	c	504.6	493.8	522.5		812.0	582.1		339.7		c	c		418.0	c	437.8	463.2	426.1	434.1	c	535.3	501.7	-0.48	-0.10%			
Young Bulls 12>24m A-U2	516.0	480.4	442.5	506.5	505.0	516.1	462.3	549.4	548.0	577.7	561.4			442.4		c			348.0	503.1	502.7	520.8	420.0	516.0	c	507.2	523.4	531.2	-2.19	-0.41%		
Young Bulls 12>24m A-U3	495.0		c	427.9	501.5	c	519.2	448.8	552.9	530.0	528.6			445.8					340.0	504.2	490.5	538.5	487.1	511.3	c	504.4	544.7	522.0	+0.27	+0.05%		
Young Bulls 12>24m A-R2	453.2		464.6	423.3	498.1	c	501.7	440.2	533.5	523.0	556.3	594.4		378.2	419.9		c	174.3		347.0	493.5	498.5	486.8	448.5	509.1	462.6	477.3	528.5	506.6	+2.44	+0.48%	
Young Bulls 12>24m A-R3	414.1	510.0	492.9	418.9	494.9	c	505.3	438.2	536.2	516.0	523.2	542.8		378.2	426.7		c		343.0	497.6	486.5	498.8	468.0	512.8	c	477.7	541.3	506.2	-0.24	-0.05%		
Young Bulls 12>24m A-O2	411.7	497.0	429.8	383.6	458.1	c	484.0	436.9	483.1	477.0	531.4	448.8	450.0	392.4	398.2	c	232.0		89.0	456.3	470.8	457.5	457.9	476.1	442.7	448.5	523.1	462.8	-0.38	-0.08%		
Young Bulls 12>24m A-O3	374.5	457.0	437.1	388.5	468.0	c	487.2	420.1	517.1	474.0	508.4	477.8	430.0	377.2	423.0				194.0	466.6	472.2	436.5	449.2	490.1	c	454.7	533.7	475.0	+1.45	+0.31%		
Young Bulls 12 > 24 m	496.6	482.6	c	408.2	495.0	c	503.5	455.4	539.0	523.7	535.9	560.0	449.8	386.9	414.7	c	219.6		289.1	499.2	481.9	501.6	457.6	497.1	c	461.3	531.9	507.8	-0.06	-0.01%		
Bulls B R3			468.9	464.1	318.6	437.2	c	400.5			471.0	559.4	426.1		401.2	436.5	c			468.8	488.8	398.9	423.2	506.7	c	448.7	525.7	479.2	+2.91	+0.61%		
Bulls	468.9	464.1	c	318.6	437.2	c	400.5			471.0	559.4	426.1		401.2	436.5	c			468.8	488.8	398.9	423.2	506.7	c	448.7	525.7	479.2	+2.91	+0.61%			
Bullocks C-U2			c				517.5		555.0					555.0						516.1							285.6	518.5	-6.40	-1.22%		
Bullocks C-U3			c	485.3	547.2		520.6		558.0		558.0	653.8				c				528.1		650.0	445.3				561.3	529.2	-2.85	-0.54%		
Bullocks C-U4							516.0		555.0											533.1		500.0	445.3	519.9			532.2	516.9	-8.61	-1.64%		
Bullocks C-R3			c	521.8	494.6	c	511.8		536.0		555.0	448.2				c	c			525.1	510.9	420.0	516.7	516.1			530.7	516.0	-4.77	-0.92%		
Bullocks C-R4			c	464.3	549.0		512.0		546.0							c	c			515.8		450.0	517.1	521.7			522.9	512.9	-7.10	-1.36%		
Bullocks C-O3			c	509.9	443.8		499.1		474.0			476.2				c	c			473.8	490.5	400.0	485.5	491.7	c		522.2	495.4	-4.93	-0.98%		
Bullocks C-O4			c	509.6			501.2									c				c			426.2	117			498.2	501.0	-6.99	-1.38%		
Bullocks			c	509.4	506.6	c	506.3		503.8		579.6					c	c			c	438.0	501.8	503.0		c	522.6	507.3	-5.18	-1.01%			
Cows D-R3	463.6	372.7	393.7	399.5	455.8	c	459.4	230.9	389.2	551.0	397.8	415.1		387.2	369.6	c	361.1		334.0	438.0	449.9	400.3	418.7	381.9	347.6	350.0	513.7	499.1	-0.40	-0.08%		
Cows D-R4		347.8	c	390.1	453.1	c	457.4		475.6	542.0	452.0	532.1		368.2	397.7	c	373.0		427.0	443.3	458.1	396.6	429.7	406.9	c	280.3	505.7	461.9	+0.56	+0.12%		
Cows D-O2	413.3	362.5	360.7	363.5	427.0	382.9	425.7	250.8	365.1	499.0	420.0	375.5		255.9	355.8	c	370.7		416.0	395.6	417.8	304.9	411.6	346.1	241.7	308.1	461.9	407.0	-0.11	-0.03%		
Cows D-O3	425.7	363.3	358.5	381.5	433.6	392.9	427.5	247.5	372.3	471.0	388.5	415.3		337.4	371.5	c	360.1		439.0	398.3	431.1	327.6	421.7	359.9	280.8	315.1	491.9	430.9	+0.03	+0.01%		
Cows D-O4	438.4	245.3	386.5	383.0	439.8	c	427.7		447.1	451.0		428.8		418.4	375.2	c	365.0		459.0	396.2	444.0	342.6	431.0	355.7	c	284.2	493.6	430.0	-0.13	-0.03%		
Cows D-P2	358.2	373.8	289.6	327.7	368.9	314.3	396.9	240.9	330.6	418.0	353.8	339.1	280.0	295.3	314.4	c	324.1		359.0	343.8	376.0	265.2	380.5	216.8	87.9	282.8	437.1	364.5	+0.30	+0.08%		
Cows D-P3	373.2	339.1	203.4	360.6	377.7	291.8	416.0	241.6	363.2	440.0		372.2	2800.0	296.2	306.4	c	226.4		384.0	351.0	383.8	238.8	383.0	311.7	c	303.9	474.4	412.7	+3.34	+0.81%		
Cows	392.1	365.0	c	358.1	424.1	c	420.6	230.9	373.6	482.0	402.7	372.8	###	312.1	342.3	c	340.1		411.7	406.3	420.9	311.3	406.5	353.1	c	296.4	479.0	405.8	+0.49	+0.12%		
Heifers E-U2	559.4		c	461.0	483.0	c	528.0		597.1							c				495.6	499.4	526.8	440.7	508.5			492.8	557.2	575.1	+3.79	+0.66%	
Heifers E-U3	522.1		c	469.8	480.1	c	532.6	482.9	546.7	599.0	535.5	602.9		398.2	447.1	c				500.7	506.7	523.0	468.1	503.1	c	492.8	547.8	562.3	+2.76	+0.49%		
Heifers E-U4			419.7	467.2	478.3		534.2		547.5		644.7					c				486.4	505.3		495.8	499.8			580.4	499.7	+0.52	+0.10%		
Heifers E-R2	506.9	69.0	c	424.4	471.5	c	513.2	510.9	547.0	548.0	542.0	577.3		478.2	412.4	c	339.3		274.0	476.8	488.6	507.6	440.1	488.3	c	479.8	525.1	512.1	+2.15	+0.42%		
Heifers E-R3	478.9		412.6	441.4	474.8	c	516.1		543.9	552.0	546.8	588.9		383.2	409.9	c	339.3		204.0	484.2	502.2	505.3	459.1	493.5	c	486.2	530.1	521.1	+1.79	+0.35%		
Heifers E-R4			c	446.0	472.9	c	517.5		530.9	536.0	550.7	529.9		358.2	390.4	c	339.3		251.0	478.0	497.3	506.5	452.2	481.0			473.4	522.1	506.6	-1.21	-0.24%	
Heifers E-O2	392.9	232.5	371.4	383.9	415.2	395.7	486.2	470.9	466.8		520.7	405.5		342.0	339.0	c	350.6		283.0	380.9	447.3	424.4	429.0	374.5	291.7	437.5	464.4	429.9	-0.98	-0.23%		
Heifers E-O3	405.7	340.9																														



ACZ - R 3 > Wk.28-2024

% of Reference Price

€/100 kg cwe

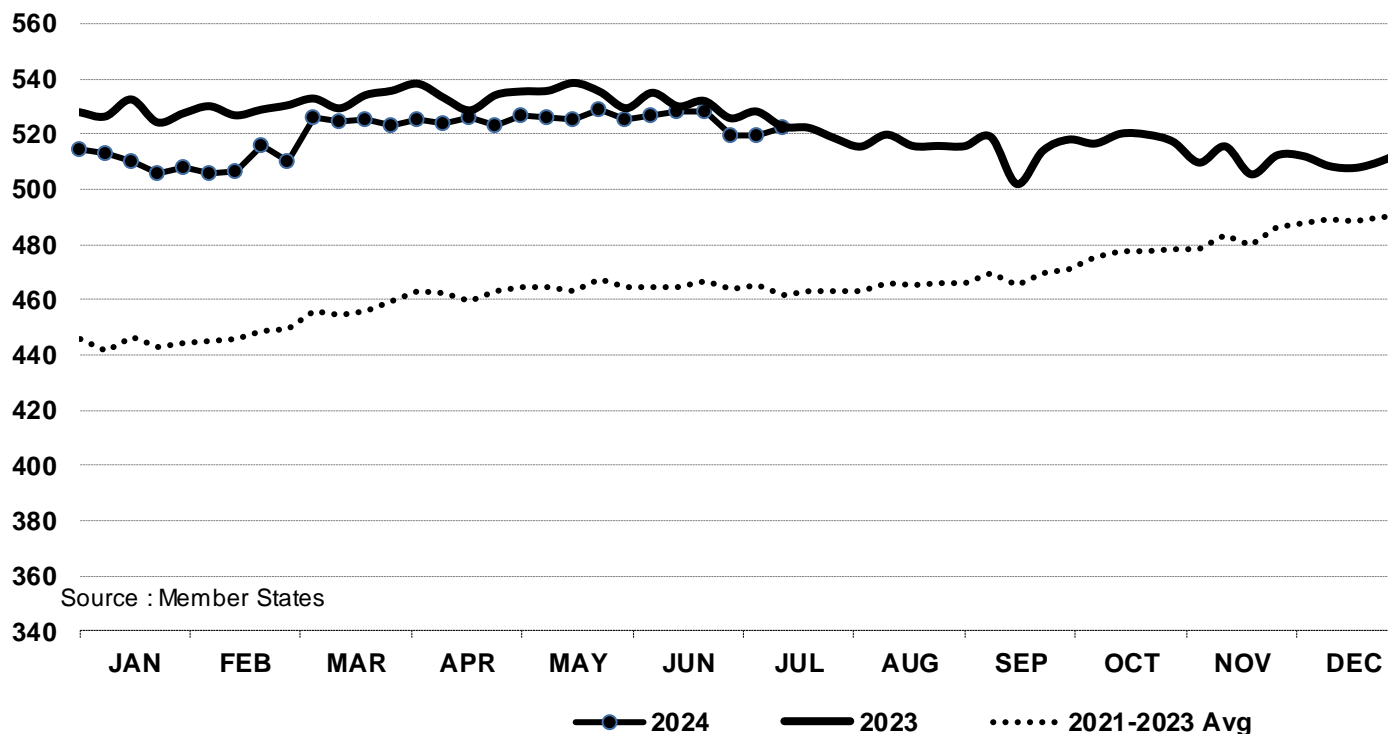


Price in week 28 : **504.25**
 % change y/y : **+ 4.09%**
 % Ref. Price in wk 0 : **217.8%**

Average price in June 2024 : **505.79**
 % change y/y : **+ 2.17%**

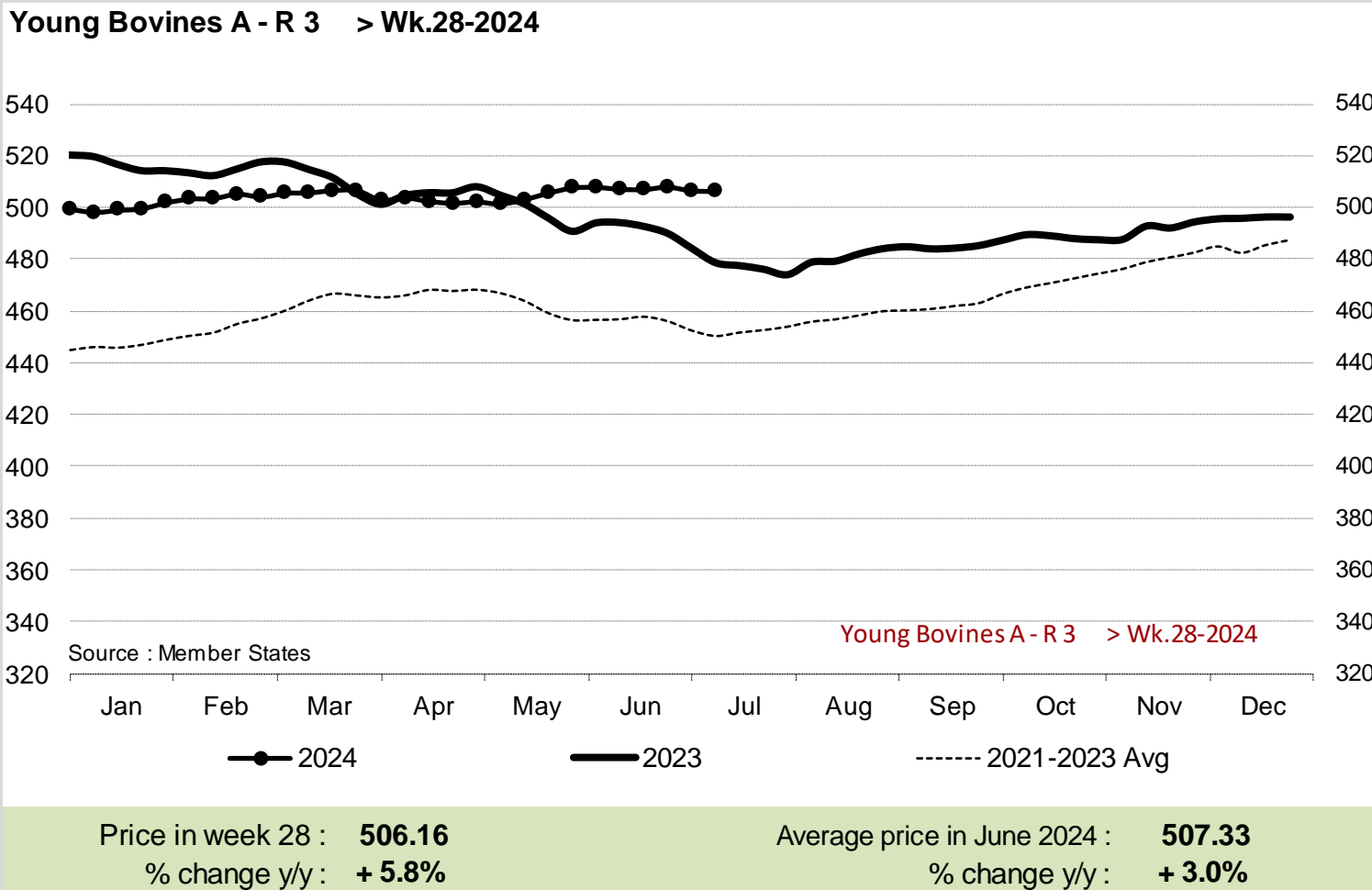


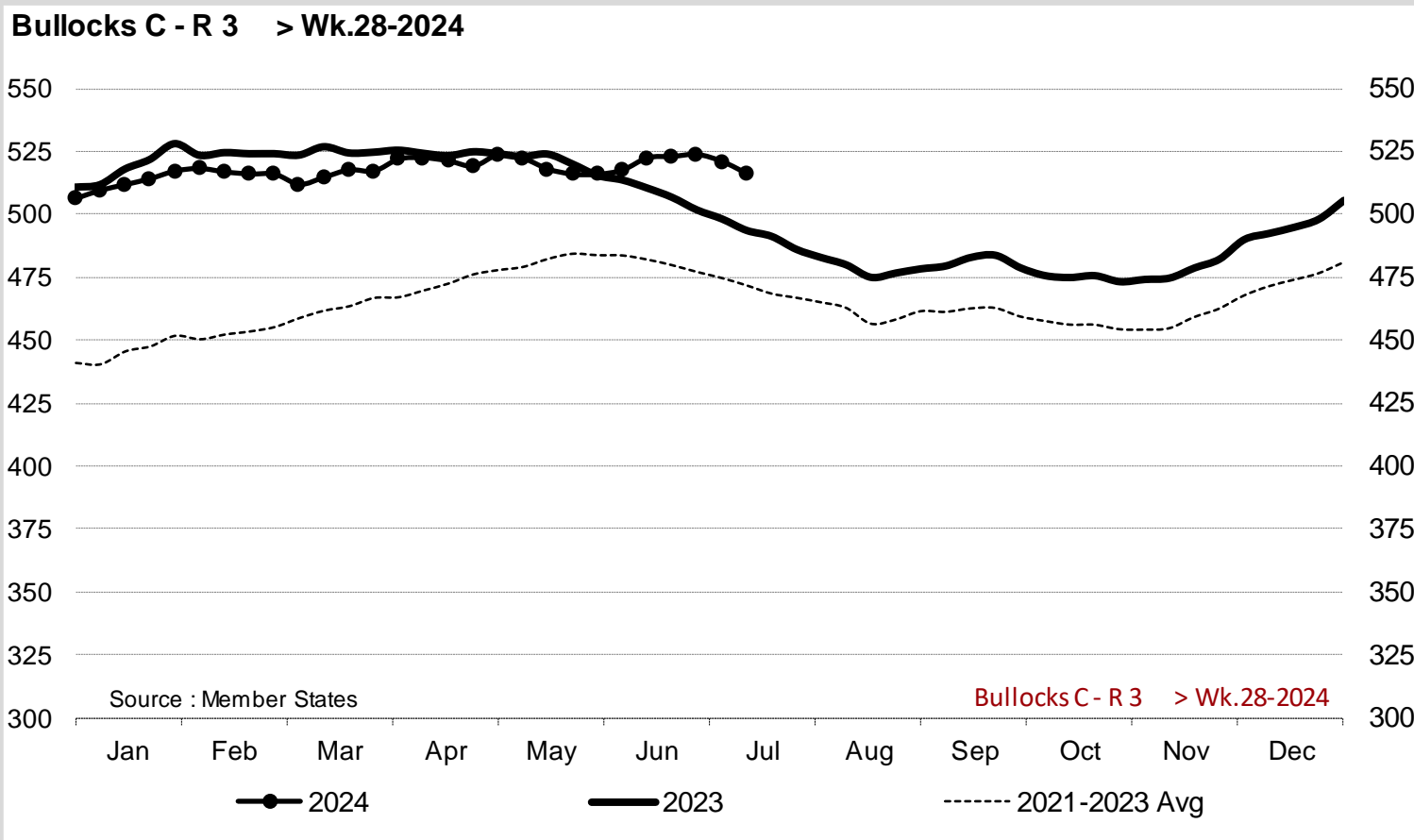
In € / 100 kg Young Bovines 8-12m Z - R 3 > Wk.28-2024



Source : Member States

Price in week 28 : **522.20** 13/06/2024 Average price in June 2024 : **525.46**
 % change y/y : **-0.1%** % change y/y : **-1.0%**

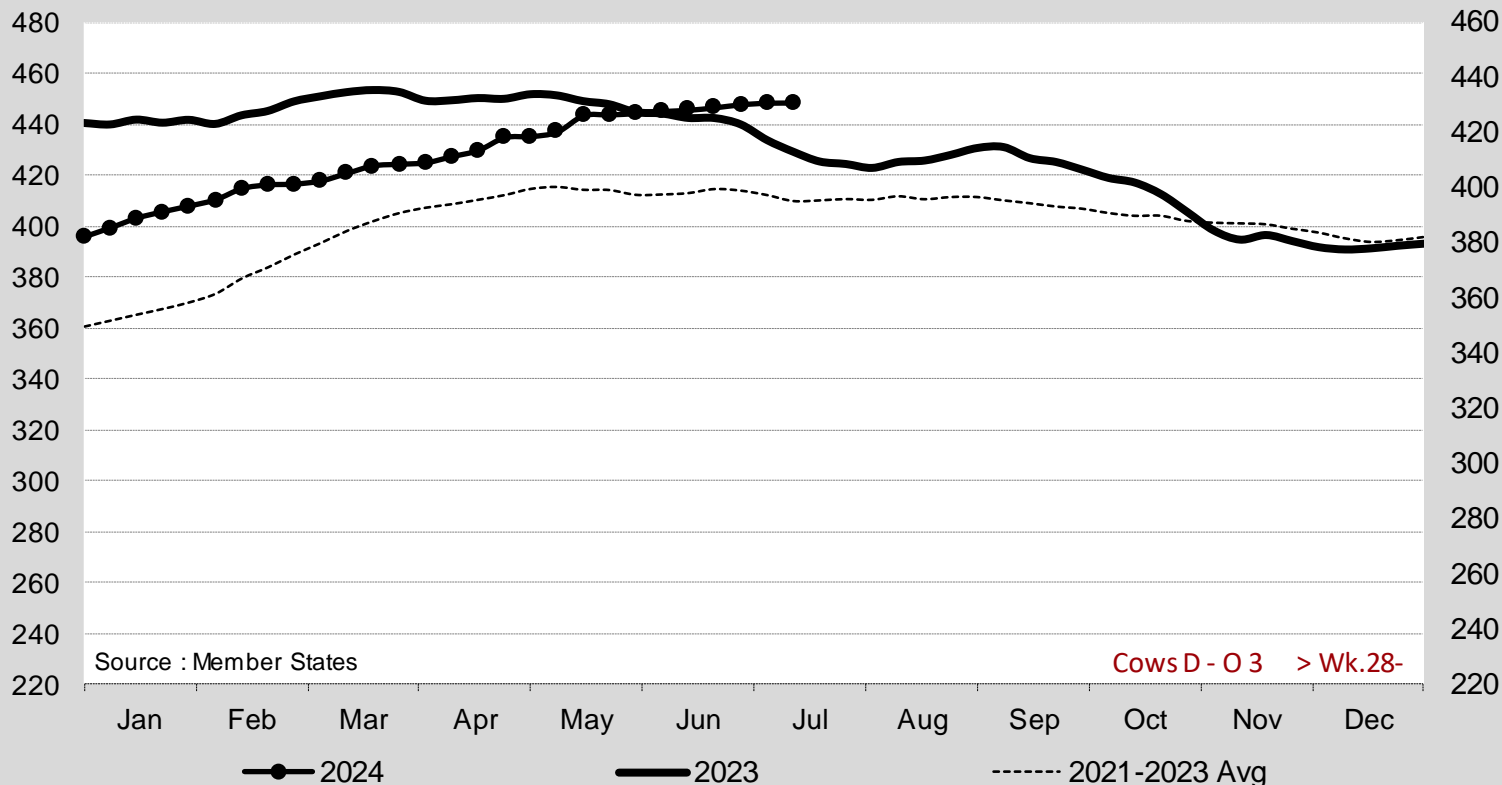




Price in week 28 : 515.96	Average price in June 2024 : 521.07
% change y/y : + 4.5%	% change y/y : + 2.3%



Cows D - O 3 > Wk.28-2024



Source : Member States

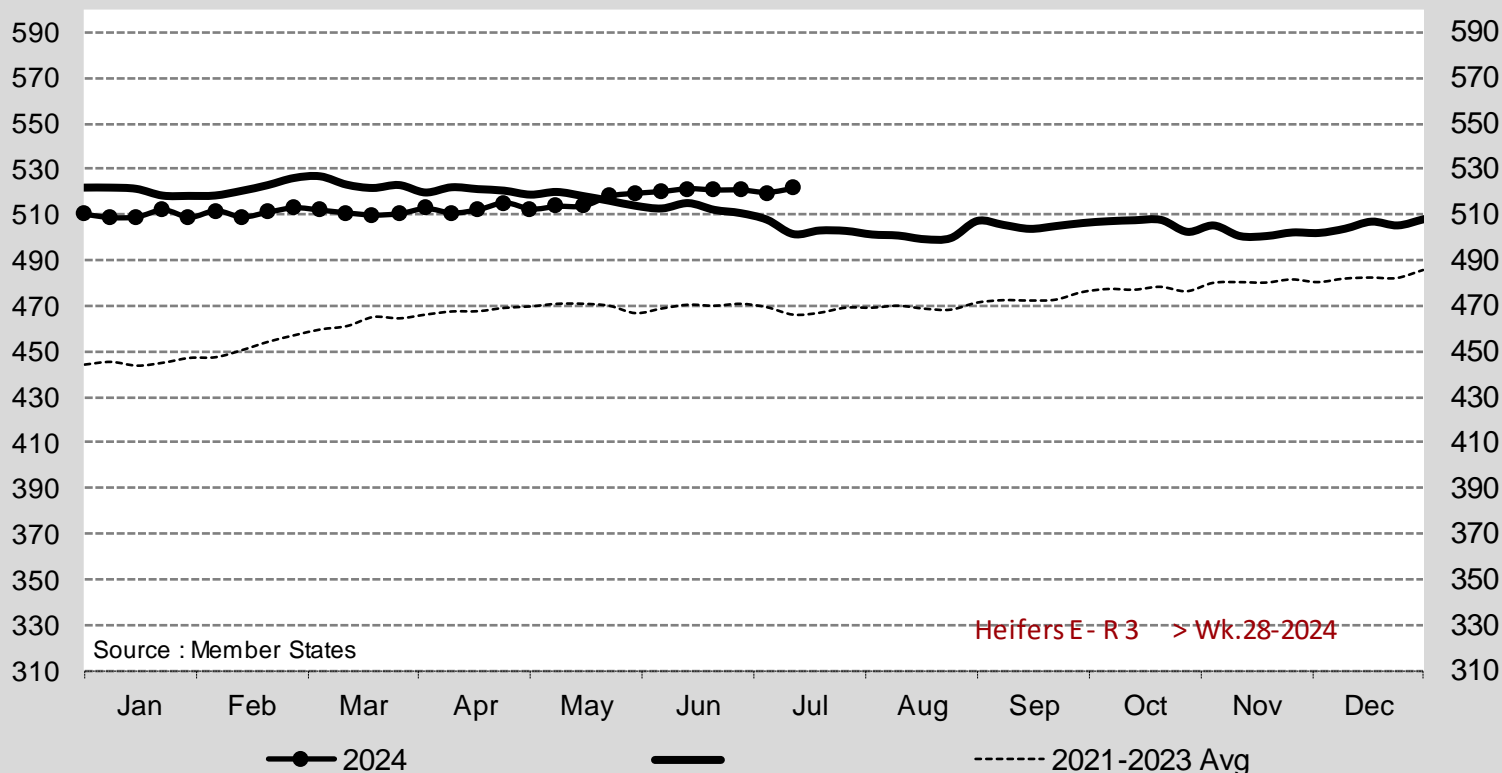
Cows D - O 3 > Wk.28-

Price in week 28 : **430.93**
 % change y/y : **+ 4.3%**

Average price in June 2024 : **428.81**
 % change y/y : **+ 0.7%**



Heifers E - R 3 > Wk.28-2024



Price in week 28 : **521.15** Average price in June 2024 : **520.27**
 % change y/y : **+ 4.0%** % change y/y : **+ 1.4%**



European Commission
E3 - Animal Products

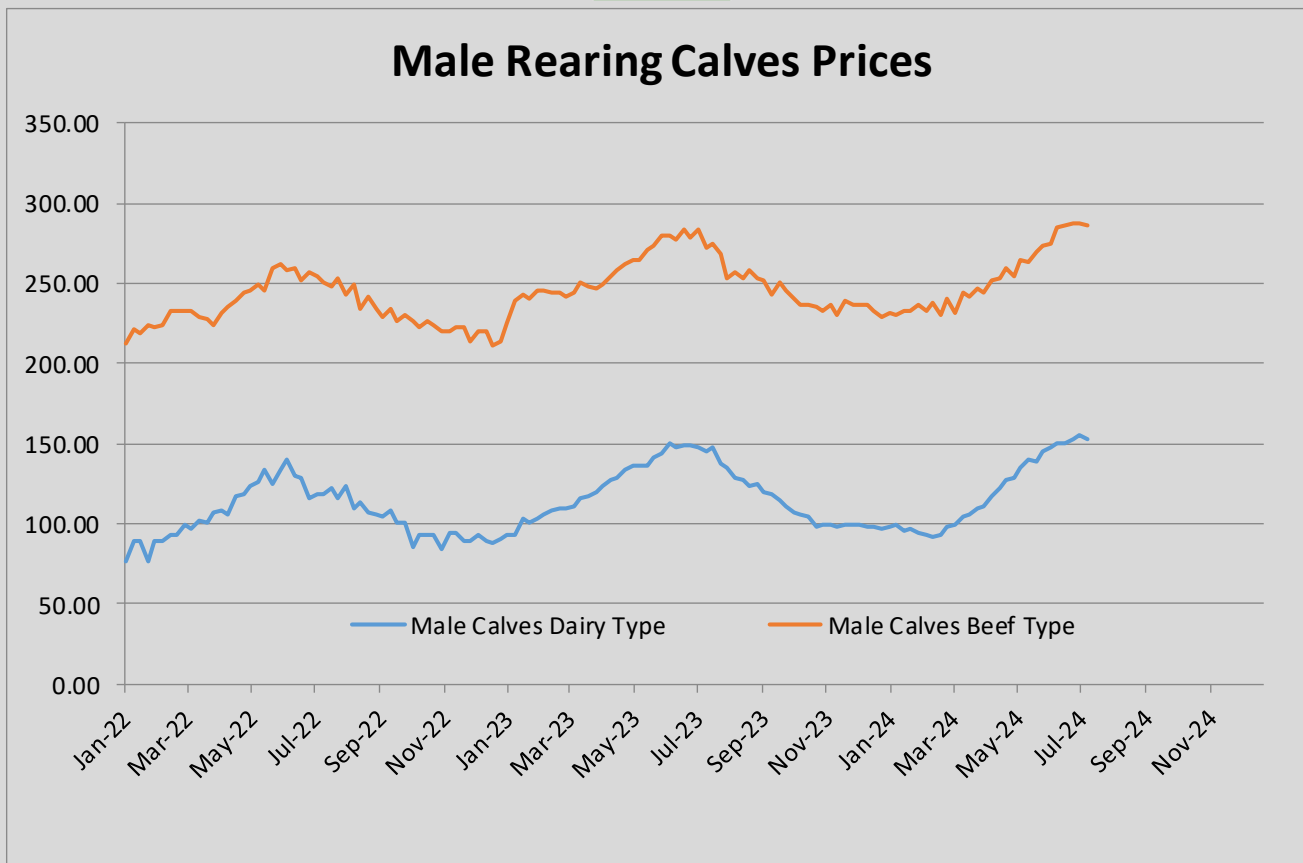
Week 28 from 08/07/2024
to 14/07/2024

Prices of Live Bovine Animals

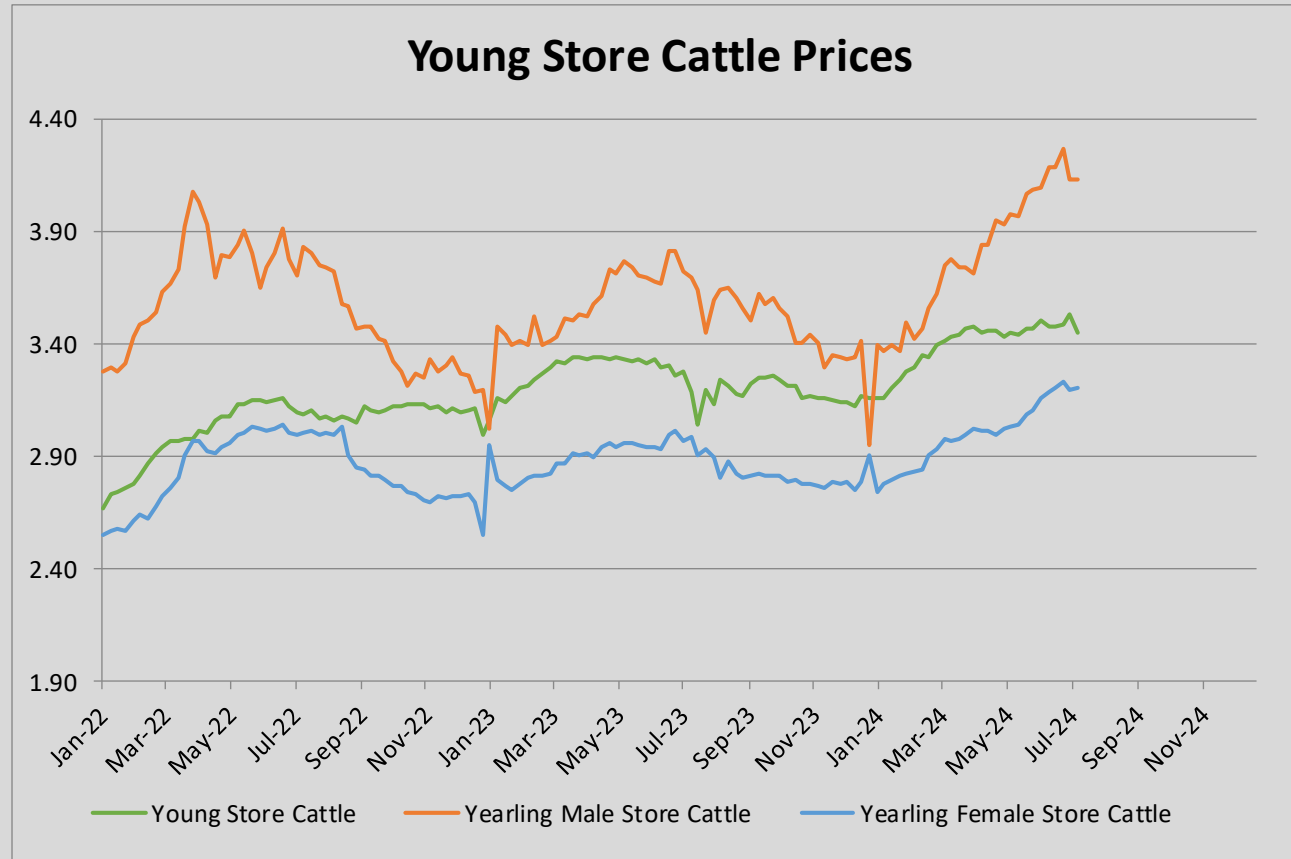
Male Calves aged between 8 days and 4 weeks															
	BE	DK	DE	IE	ES	FR	IT	NL	AT	PL	PT	RO	SI	SE	EU
Male Calves Dairy type															
Market Price € / head	124.50	103.89	171.86	132.34	116.65	133.07	182.95	164.00	164.70	202.57		48.25			153.31
Previous week market price	124.50	103.90	172.14	155.06	116.62	128.15	182.09	164.00	190.73	200.92		46.26			154.85
Difference with previous week	0.00	-0.02	-0.28	-22.72	0.03	4.92	0.86	0.00	-26.03	1.66		1.99			-1.54
% of EU average	81	68	112	86	76	87	119	107	107	132		31			
Coefficient	3.09	3.16	21.48	8.74	4.54	18.31	10.46	8.94	3.14	11.97		6.17			100
Male Calves Beef type															
Market Price € / head	397.22		265.70	203.66	221.78	299.95	265.87	271.00	457.86	296.45		420.57			286.31
Previous week market price	397.22		264.80	229.70	222.63	292.43	265.83	271.00	474.90	294.02		429.37			287.34
Difference with previous week	0.00		0.90	-26.04	-0.85	7.52	0.04	0.00	-17.04	2.43		-8.80			-1.03
% of EU average	139		93	71	77	105	93	95	160	104		147			
Coefficient	3.54		17.22	9.25	11.28	27.41	9.09	6.32	2.78	8.75		4.38			100

Store Cattle															
	BE	DK	DE	IE	ES	FR	IT	NL	AT	PL	PT	RO	SI	SE	EU
Young Store Cattle															
Market Price € / kg	4.93			2.64	3.64	3.77	3.65		3.03		3.19			2.35	3.45
Previous week market price	4.93			2.96	3.65	3.78	3.66		2.96		3.37			2.39	3.53
Difference with previous week	0.00			-0.32	-0.01	-0.01	-0.01		0.07		-0.18			-0.04	-0.07
% of EU average	143			76	105	109	106		88		92			68	
Coefficient	5.46			20.59	6.77	45.01	7.52		5.70		4.34			4.62	100
Yearling Male Store Cattle															
Market Price € / kg	4.61		6.79	2.32		3.57	4.04		3.25		3.24			2.58	4.13
Previous week market price	4.61		6.86	2.36		3.61	4.07		2.35		3.36			2.59	4.13
Difference with previous week	0.00		-0.07	-0.04		-0.04	-0.03		0.90		-0.12			-0.01	0.00
% of EU average	112		165	56		86	98		79		78			62	
Coefficient	2.86		24.84	23.42		22.53	16.29		4.85		1.74			3.48	100
Yearling Female Store Cattle															
Market Price € / kg	3.53		3.87	2.36		3.30	3.01		2.32		2.85			2.42	3.20
Previous week market price	3.53		3.82	2.39		3.27	3.01		2.48		2.87			2.43	3.19
Difference with previous week	0.00		0.05	-0.03		0.03	0.00		-0.16		-0.02			-0.01	0.01
% of EU average	110		121	74		103	94		72		89			76	
Coefficient	4.94		25.03	14.65		32.36	13.97		3.80		2.16			3.10	100

Calves Slaughtered before 8 months															
	BE	DK	DE	IE	ES	FR	IT	NL	AT	PL	PT	RO	SI	SE	EU
Market Price € / 100 kg	693.00		564.00			681.90	557.50	563.95			478.64		472.21		606.51
Previous week market price	693.00		535.00			682.70	572.38	563.95			499.52		465.63		607.04
Difference with previous week	0.00		29.00			-0.80	-14.88	0.00			-20.88		6.58		-0.53
% of EU average	114		93			112	92	93			79		78		
Coefficient	8.54		7.98			27.77	16.23	37.91			1.24		0.33		100



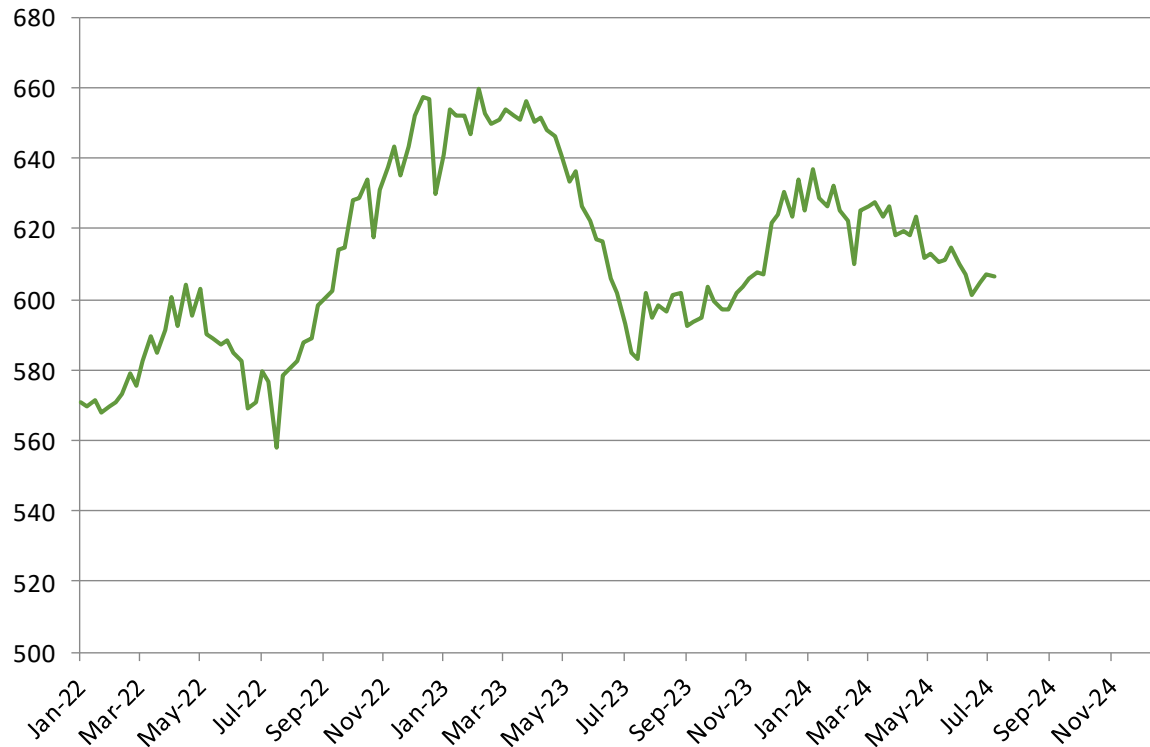
Male Rearing Calves Beef type Price in Week 28 286.31 Change y/y +5.0%		Male Rearing Calves Dairy type Price in Week 28 153.31 Change y/y +5.4%	
---	--	--	--



Young Store Cattle Price in	Week 28	3.45	Yearling Male Store Cattle Price	4.13
	Change y/y	+8.3%	Change y/y	+11.9%
Yearling Female Store Cattle Price		3.20		
	Change y/y	+7.2%		



Calves Slaughtered before the Age of 8 Months



Price in Week 28 606.51 € / 100 kg of carcasse weight
Change y/y +3.7%