



➔ Live Animal Prices

Last update : 25.04.2024

Prices not received : EL

Semaine / Week : 16

du / from : 15.04.24

au / to : 21.04.24

PRIX DE MARCHÉ NATIONAUX et COMMUNAUTAIRES UE (en Euro & en % du prix de référence)

NATIONAL and COMMUNITY EU MARKET PRICES (in Euro & as % of the reference price)

(Euro/100 kg PC/DW)	YOUNG MALE BOVINES 12>24 m - CATEGORIE A						BULLOCKS - CATEGORIE C						YOUNG BOVINES 8>12 m - CATEGORIE Z						CATEGORIE A/C/Z				
	U2+U3	R2+R3	O2+O3	U+R+O	Change on last week	%	U2+U3+U4	R3+R4	O3	U+R+O	Change on last week	%	U2+U3	R2+R3	O2+O3	U+R+O	Change on last week	%	R3	% of ref. price	Change on last week	%	
	U	R	O	URO			U	R	O	URO			U	R	O	URO			R3				
Prix moyens	502.35	496.75		497.76	- 4.57	-0.91%	404.60	526.41	540.15	530.84	+ 0.38	+0.1%	526.00	520.15		506.08	+ 2.25	+0.4%	503.30	226.31	- 2.69	-0.53%	
Average prices																							
BE	467.90	438.73		464.09	- 0.11	- 0.0%													464.09		- 0.11	0.0%	
BG		400.14		400.14		- 11.5%													400.14		- 52.04	- 11.5%	
CZ	c	c	458.57	c									c	c	c				c				
DK		415.25	400.52	406.50	- 0.88	- 0.2%							439.86	455.14	450.88	+ 0.28	0.1%		438.28		- 0.05	0.0%	
DE	469.97	483.82		476.74	+ 0.44	+ 0.1%							456.20		456.20				476.44		+ 0.44	0.1%	
EE		c		c									c		c				c				
IE							508.44	526.43	548.83	536.43	+ 1.38	0.3%							536.43		+ 1.38	0.3%	
EL		422.20	469.50	443.20	idem	idem							475.19	512.55	498.06				469.74				
ES	513.03	532.75		519.87	- 8.02	- 1.5%							523.81	537.79	512.55	532.31	+ 1.81	0.3%	526.52		- 2.76	- 0.5%	
FR	519.65	520.70	497.99	516.82	- 3.39	- 0.7%		527.00		503.04	- 4.57	- 0.9%							514.68		- 3.58	- 0.7%	
HR	507.83	517.97		515.52	+ 4.08	+ 0.8%										514.32			515.47		+ 4.03	0.8%	
IT	542.95	505.17	474.69	536.60	- 9.23	- 1.7%							595.33	561.68	577.42	578.20	+ 28.71	5.2%	538.70		- 7.31	- 1.3%	
CY					idem	idem																	
LV		467.78		467.78	+ 93.17	+ 24.9%							373.93		373.93	+ 25.73	7.4%		448.49		+ 79.31	21.5%	
LT		412.01	421.45	418.67	+ 3.50	+ 0.8%							c		c				c				
LU	c	c		c															c				
HU		203.83		203.83	- 1.92	- 0.9%													203.83		- 1.92	- 0.9%	
MT																							
NL		441.10	247.22	342.60	+ 74.72	+ 27.9%								468.60	442.43	446.91	+ 1.52	0.3%	422.94		+ 18.34	4.5%	
AT	464.34	474.71		467.76	- 2.63	- 0.6%							536.70	525.24		532.02	+ 0.60	0.1%	472.66		- 2.38	- 0.5%	
PL		486.28	490.94	489.39	- 18.26	- 3.6%								482.62	419.34	436.24	- 23.53	- 5.1%	488.95		- 18.30	- 3.6%	
PT	509.28	498.42		504.51	+ 4.45	+ 0.9%							480.47	463.94		466.66	- 3.87	- 0.8%	486.57		+ 0.51	0.1%	
RO	438.87	433.51	461.56	452.51	+ 10.90	+ 2.5%							405.76	436.59	440.11	439.45	+ 5.25	1.2%	442.94		+ 6.76	1.5%	
SI	483.78	493.62	469.46	487.40	- 0.29	- 0.1%								407.90	500.69	434.14	- 10.75	- 2.4%	483.01		- 1.15	- 0.2%	
SK		469.23	c	c											c	c			c				
FI		482.51	476.73	477.99	- 0.81	- 0.2%													477.99		- 0.81	- 0.2%	
SE		514.49	533.00	525.22	- 14.62	- 2.7%							526.71		526.71	- 3.94	- 0.7%		525.31		- 13.99	- 2.6%	

Source : Member States

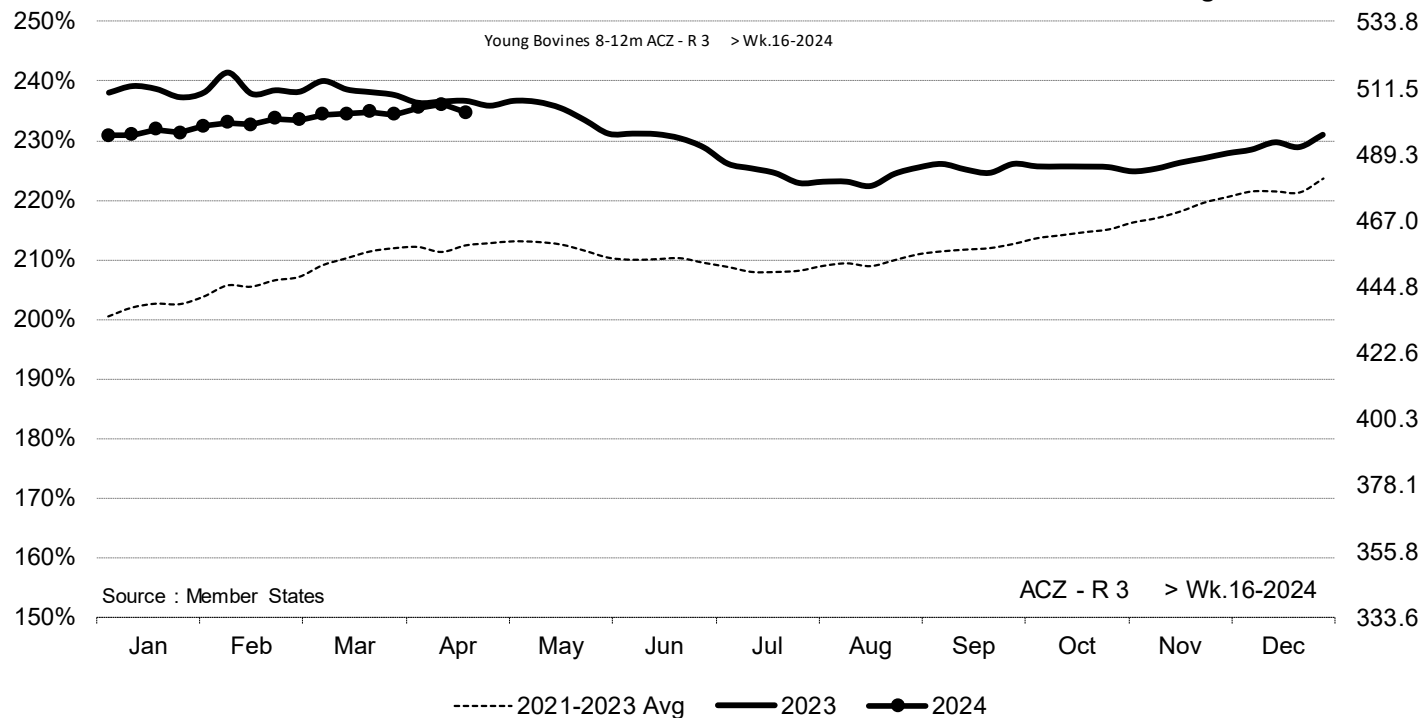




ACZ - R 3 > Wk.16-2024

% of Reference Price

€/100 kg cwe

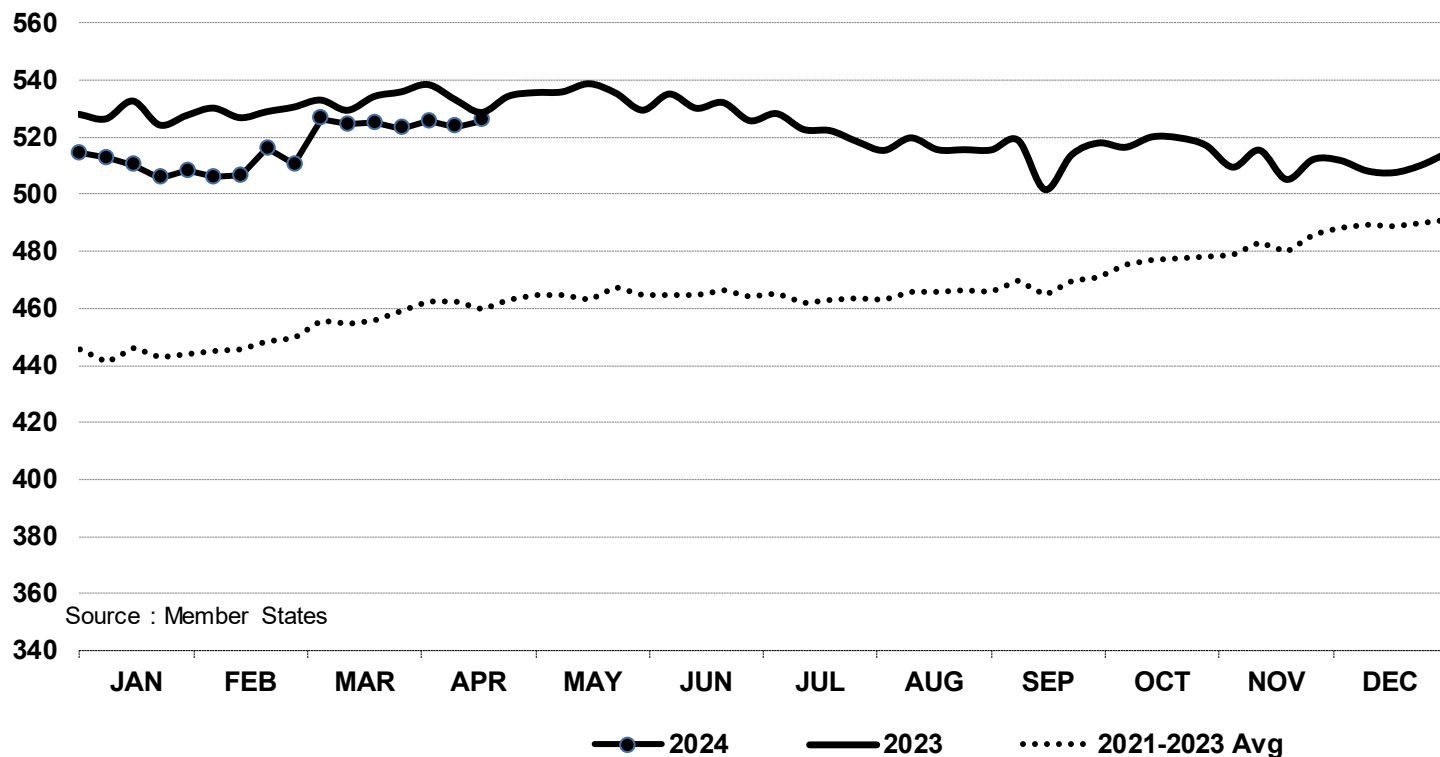


Price in week 16 : **503.30**
 % change y/y : **- 0.80%**
 % Ref. Price in wk 0 : **228.1%**

Average price in March 2024 : **502.72**
 % change y/y : **- 1.67%**



In € / 100 kg Young Bovines 8-12m Z - R 3 > Wk.16-2024

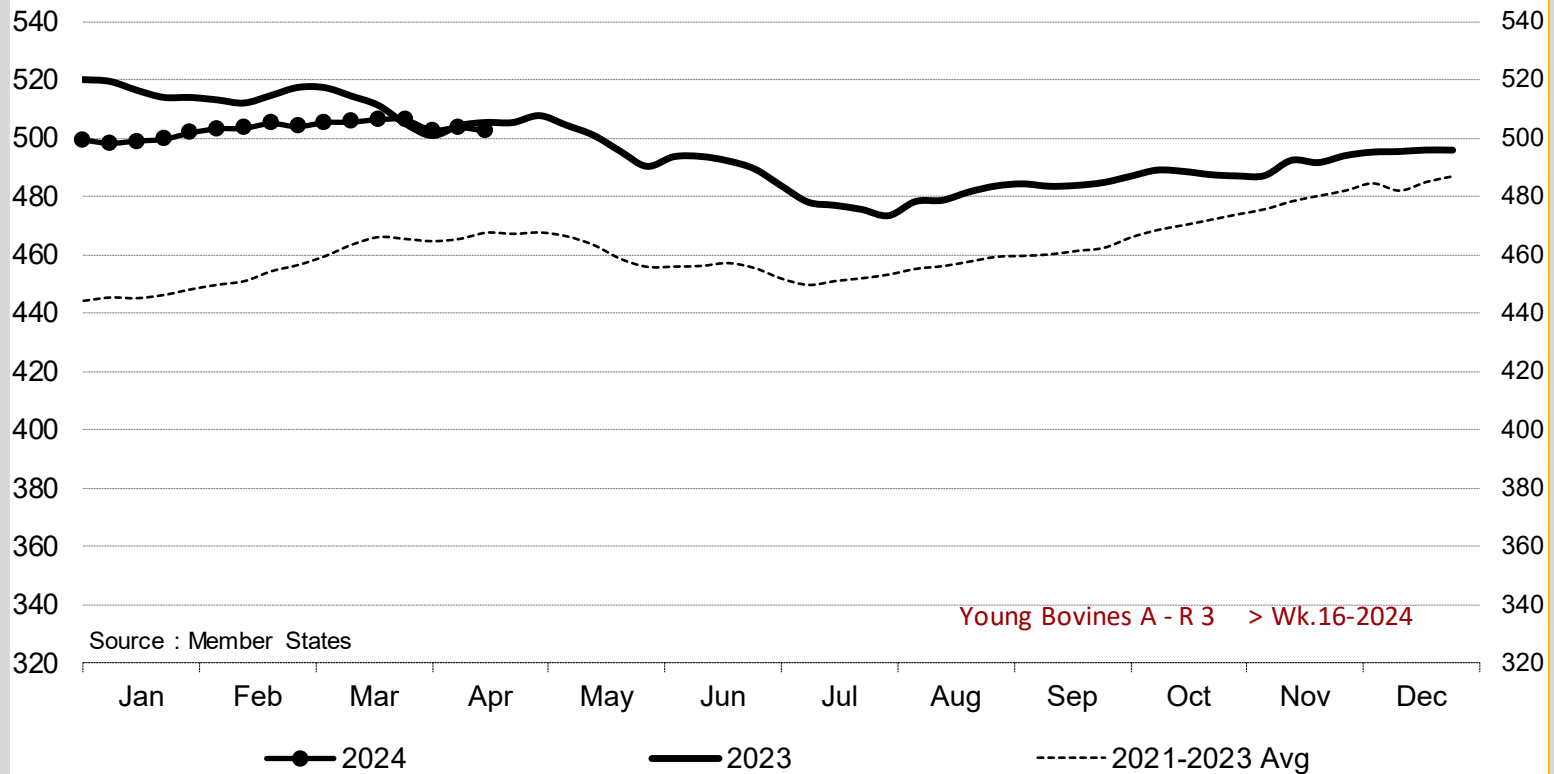


Source : Member States

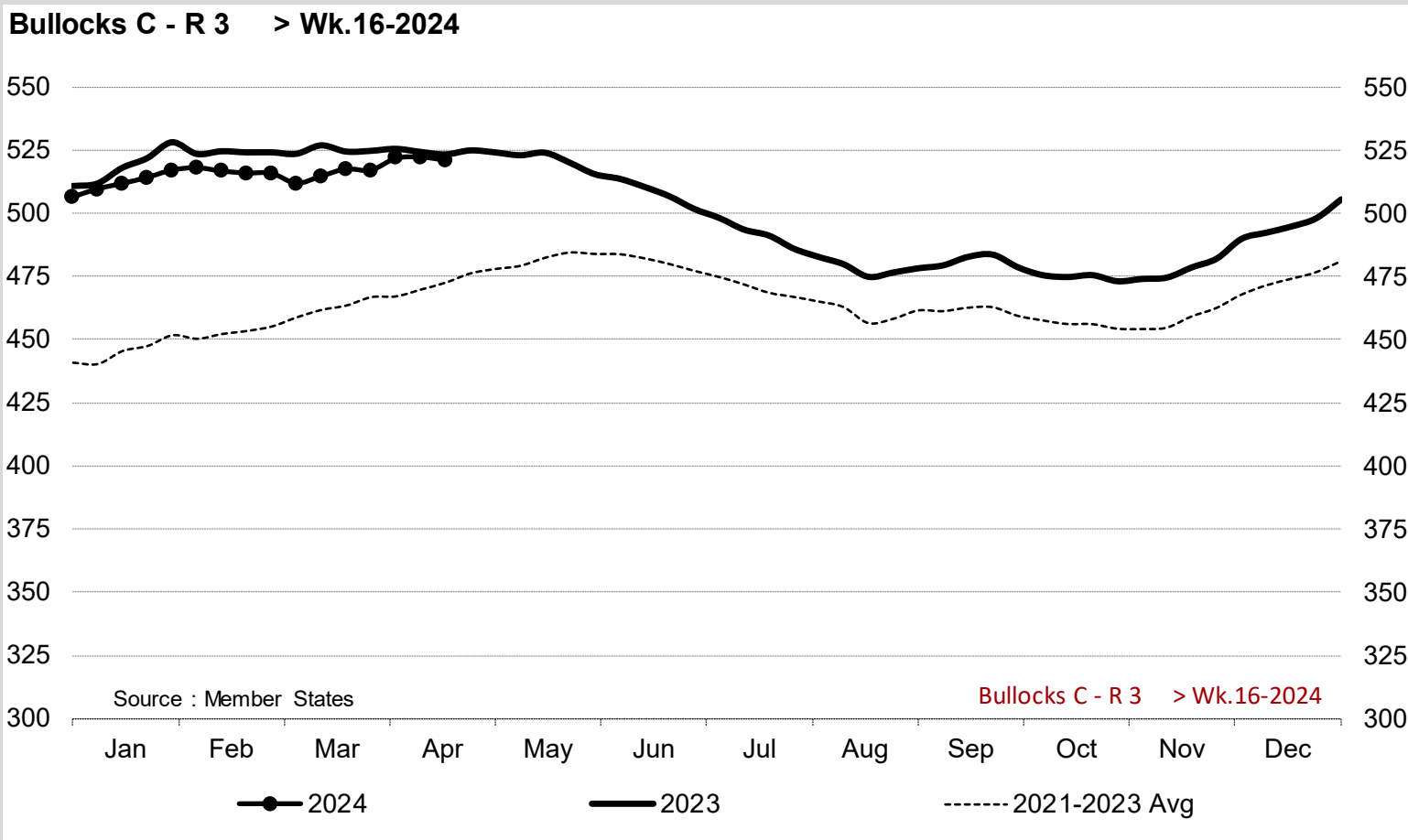
Price in week 16 : **526.01** 21/03/2024 Average price in March 2024 : **523.36**
 % change y/y : **- 0.5%** % change y/y : **- 1.7%**



Young Bovines A - R 3 > Wk.16-2024



Price in week 16 : **502.42** Average price in March 2024 : **505.83**
 % change y/y : **- 0.6%** % change y/y : **- 1.5%**

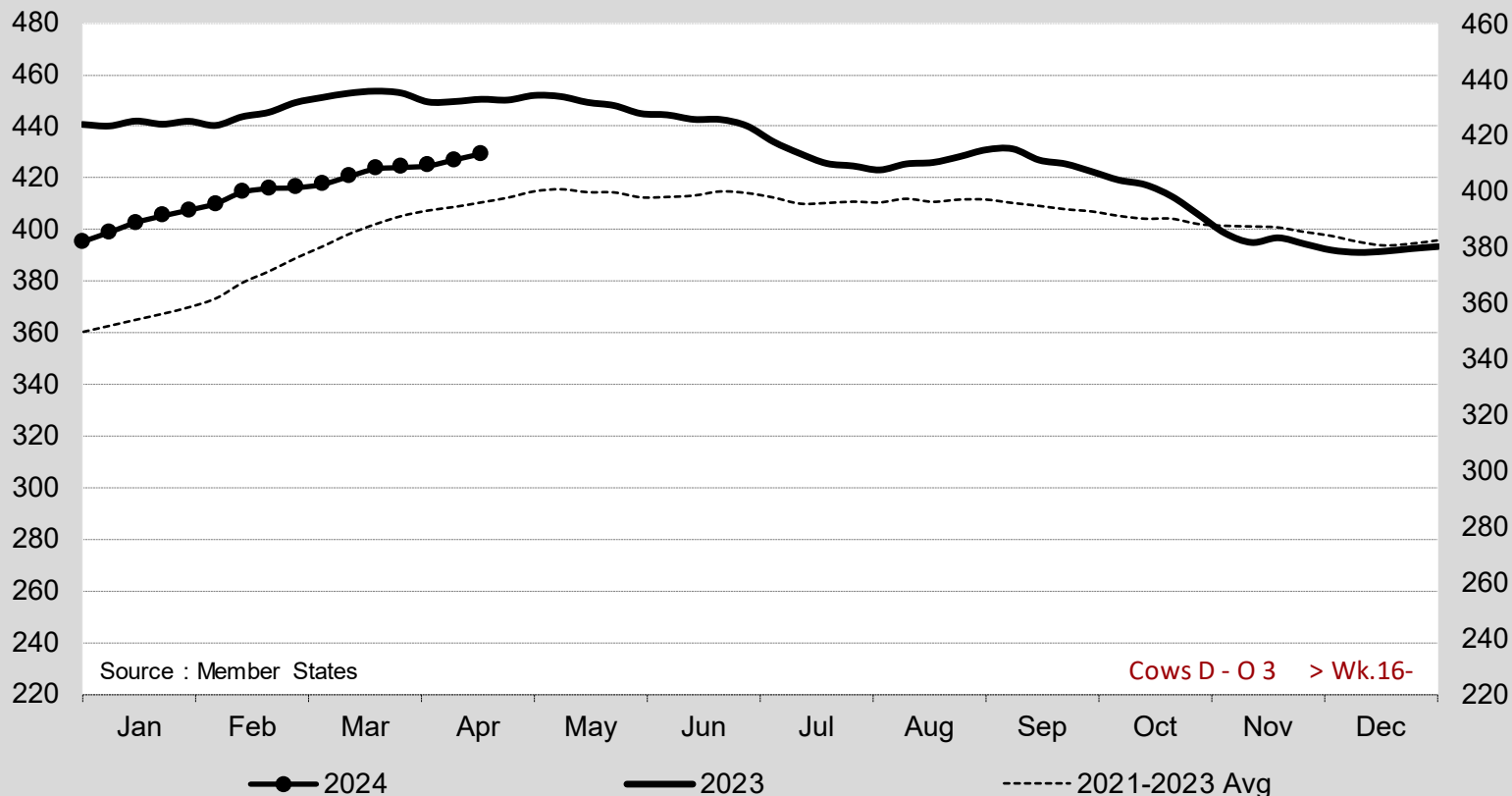


Price in week 16 : **520.96**
 % change y/y : **- 0.5%**

Average price in March 2024 : **515.28**
 % change y/y : **- 1.8%**



Cows D - O 3 > Wk.16-2024



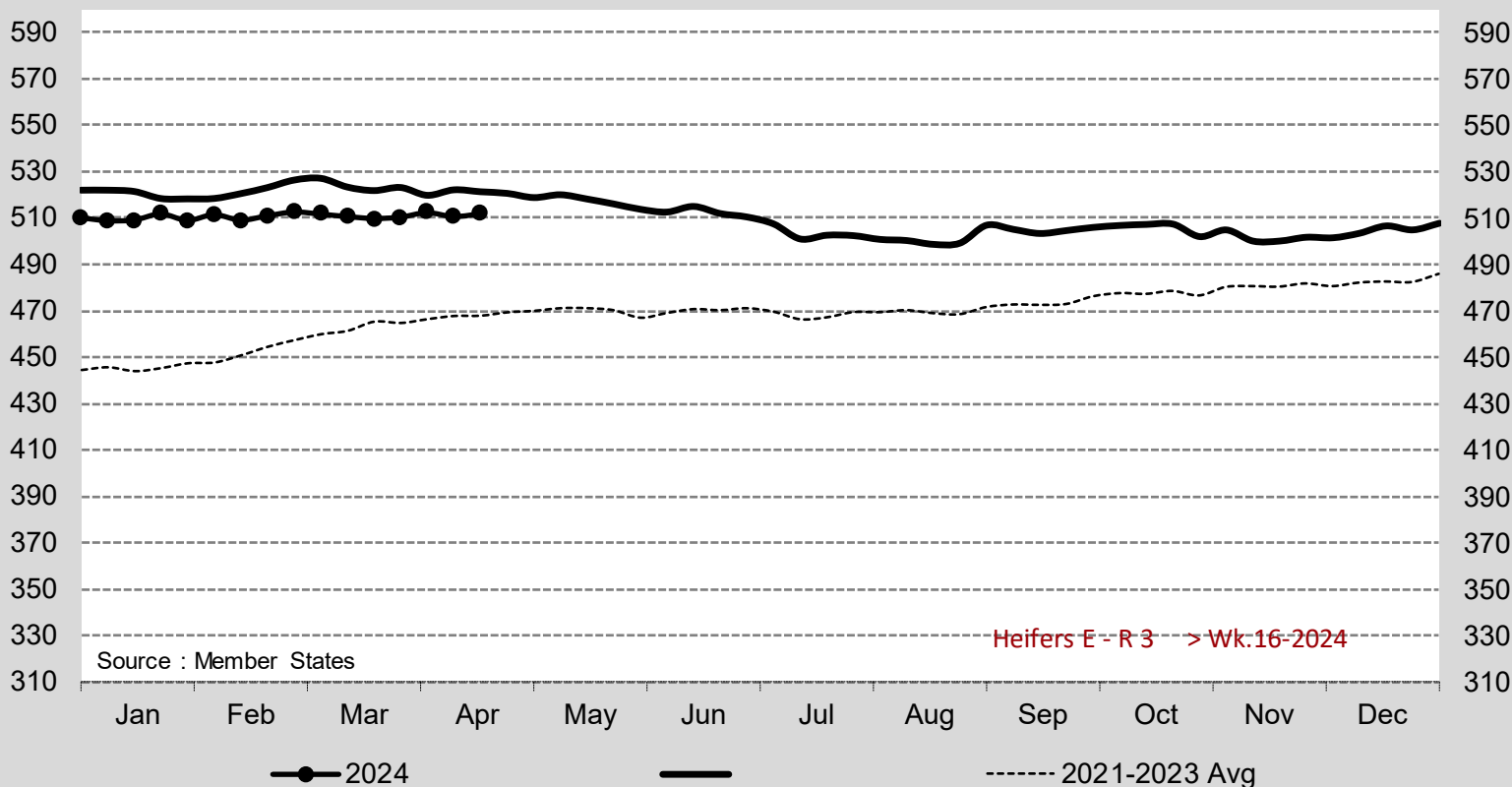
Source : Member States

Cows D - O 3 > Wk.16-

Price in week 16 : **413.41** Average price in March 2024 : **405.57**
 % change y/y : **- 4.4%** % change y/y : **- 6.6%**



Heifers E - R 3 > Wk.16-2024



Source : Member States

Heifers E - R 3 > Wk.16-2024

Price in week 16 : **511.92**
 % change y/y : **- 1.8%**

Average price in March 2024 : **510.74**
 % change y/y : **- 2.6%**

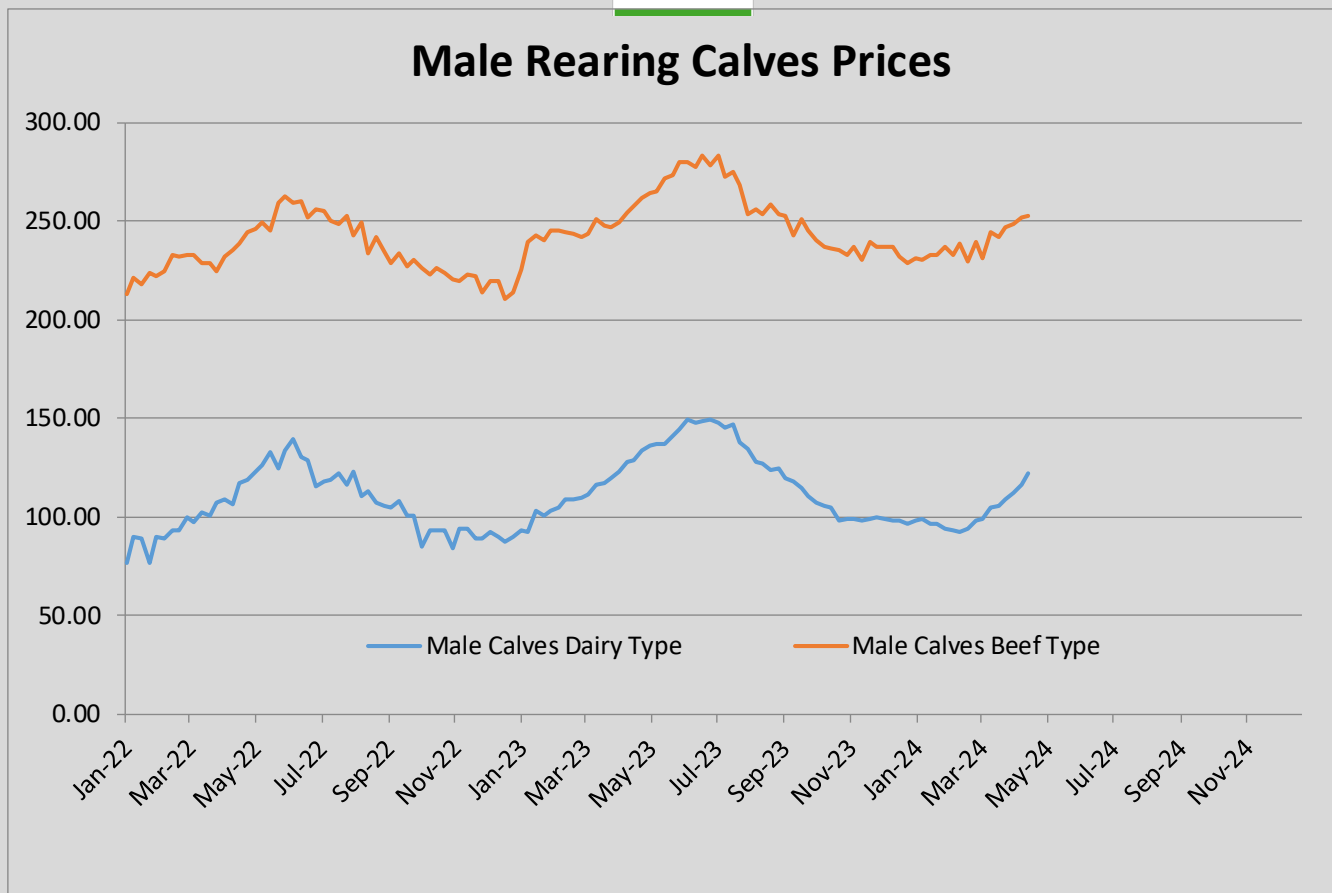


European Commission
E3 - Animal Products

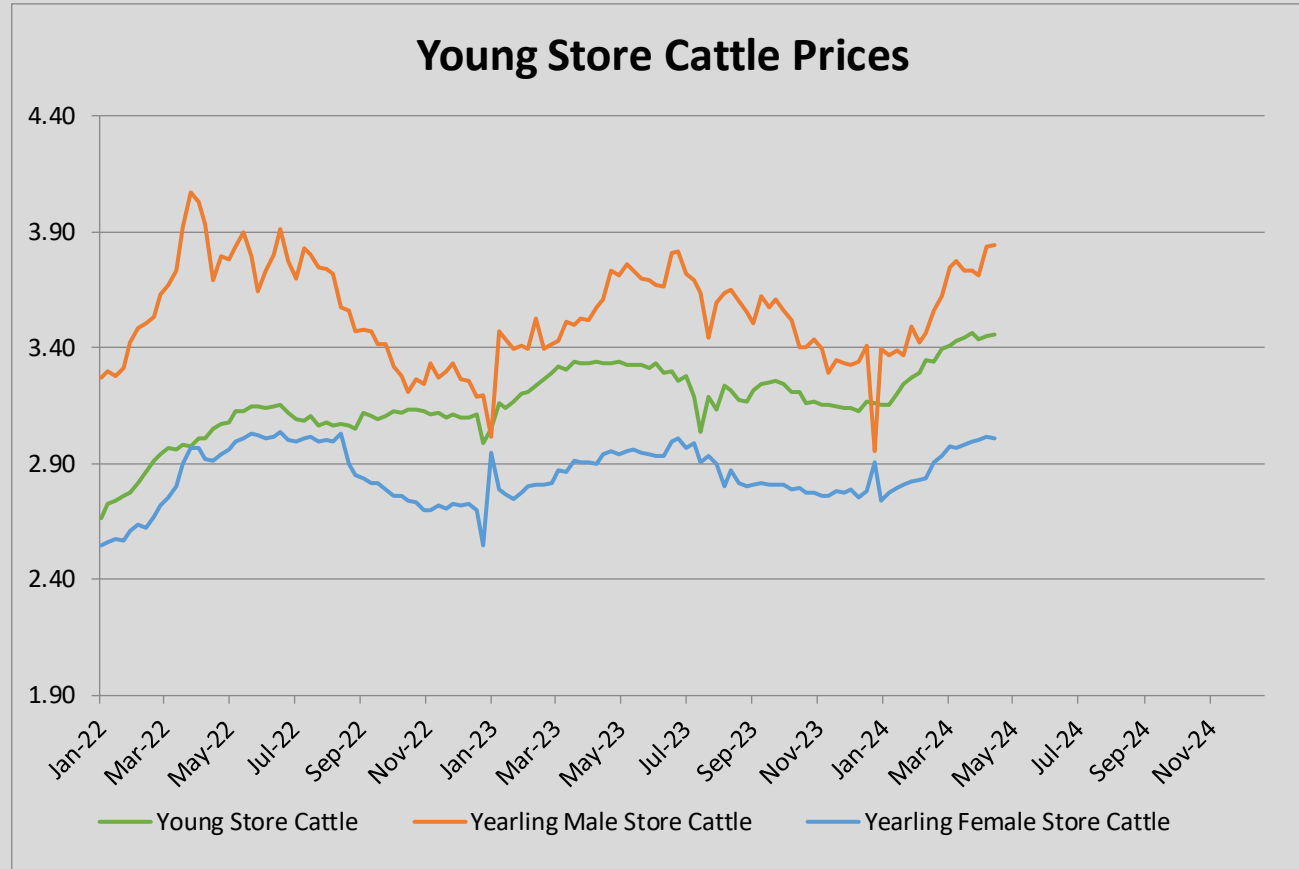
Week 16 from 15/04/2024
to 21/04/2024

Prices of Live Bovine Animals

Male Calves aged between 8 days and 4 weeks															
	BE	DK	DE	IE	ES	FR	IT	NL	AT	PL	PT	RO	SI	SE	EU
Male Calves Dairy type															
Market Price € / head	83.67	97.17	124.31	96.90	111.41	113.05	143.76	104.00	131.65	201.02		47.82			121.86
Previous week market price	76.75	100.54	113.70	95.46	111.42	103.05	131.86	98.00	184.16	199.50		39.97			116.67
Difference with previous week	-6.92	-3.37	10.61	1.44	-0.01	10.00	11.90	6.00	-52.51	1.52		7.84			5.18
% of EU average	69	80	102	80	91	93	118	85	108	165		39			
Coefficient	3.10	3.17	21.70	8.60	4.61	18.40	10.62	8.94	3.14	11.60		6.13			100
Male Calves Beef type															
Market Price € / head	357.78		224.10	157.07	213.32	272.20	246.88	201.00	428.08	309.26		333.85			252.93
Previous week market price	353.33		219.00	152.08	213.31	266.39	245.12	195.00	446.57	307.63		391.58			252.17
Difference with previous week	-4.45		5.10	4.99	0.01	5.81	1.76	6.00	-18.49	1.62		-57.72			0.76
% of EU average	141		89	62	84	108	98	79	169	122		132			
Coefficient	3.57		17.29	9.28	11.30	27.46	9.18	6.31	2.77	8.49		4.35			100
Store Cattle															
	BE	DK	DE	IE	ES	FR	IT	NL	AT	PL	PT	RO	SI	SE	EU
Young Store Cattle															
Market Price € / kg	4.93			2.93	3.58	3.68	3.62		2.83		3.29			2.38	3.46
Previous week market price	4.93			2.95	3.58	3.67	3.61		2.80		3.30			2.28	3.45
Difference with previous week	0.00			-0.02	0.00	0.01	0.01		0.03		-0.01			0.10	0.01
% of EU average	143			85	104	106	105		82		95			69	
Coefficient	5.45			20.34	7.69	44.62	7.21		5.73		4.37			4.59	100
Yearling Male Store Cattle															
Market Price € / kg	4.61		5.78	2.60		3.34	3.96		2.72		3.17			2.23	3.84
Previous week market price	4.61		5.73	2.63		3.30	3.95		2.73		3.35			2.44	3.84
Difference with previous week	0.00		0.05	-0.03		0.04	0.01		-0.01		-0.18			-0.21	0.01
% of EU average	120		150	68		87	103		71		83			58	
Coefficient	2.85		25.17	24.15		21.50	16.48		4.92		1.46			3.47	100
Yearling Female Store Cattle															
Market Price € / kg	3.53		3.08	2.63		3.20	2.99		2.32		2.89			2.36	3.01
Previous week market price	3.53		3.06	2.61		3.20	2.99		2.62		2.96			2.32	3.01
Difference with previous week	0.00		0.02	0.02		0.00	0.00		-0.30		-0.07			0.04	-0.00
% of EU average	117		102	87		106	99		77		96			78	
Coefficient	5.14		25.14	14.29		32.54	13.84		3.79		2.18			3.09	100
Calves Slaughtered before 8 months															
	BE	DK	DE	IE	ES	FR	IT	NL	AT	PL	PT	RO	SI	SE	EU
Market Price € / 100 kg	704.25		577.00			713.00	534.50	577.95			488.96		456.66		618.19
Previous week market price	708.50		570.22			712.40	544.50	577.95			479.94		461.15		619.30
Difference with previous week	-4.25		6.78			0.60	-10.00	0.00			9.02		-4.49		-1.11
% of EU average	114		93			115	86	93			79		74		
Coefficient	7.99		7.91			28.82	15.97	37.45			1.48		0.37		100



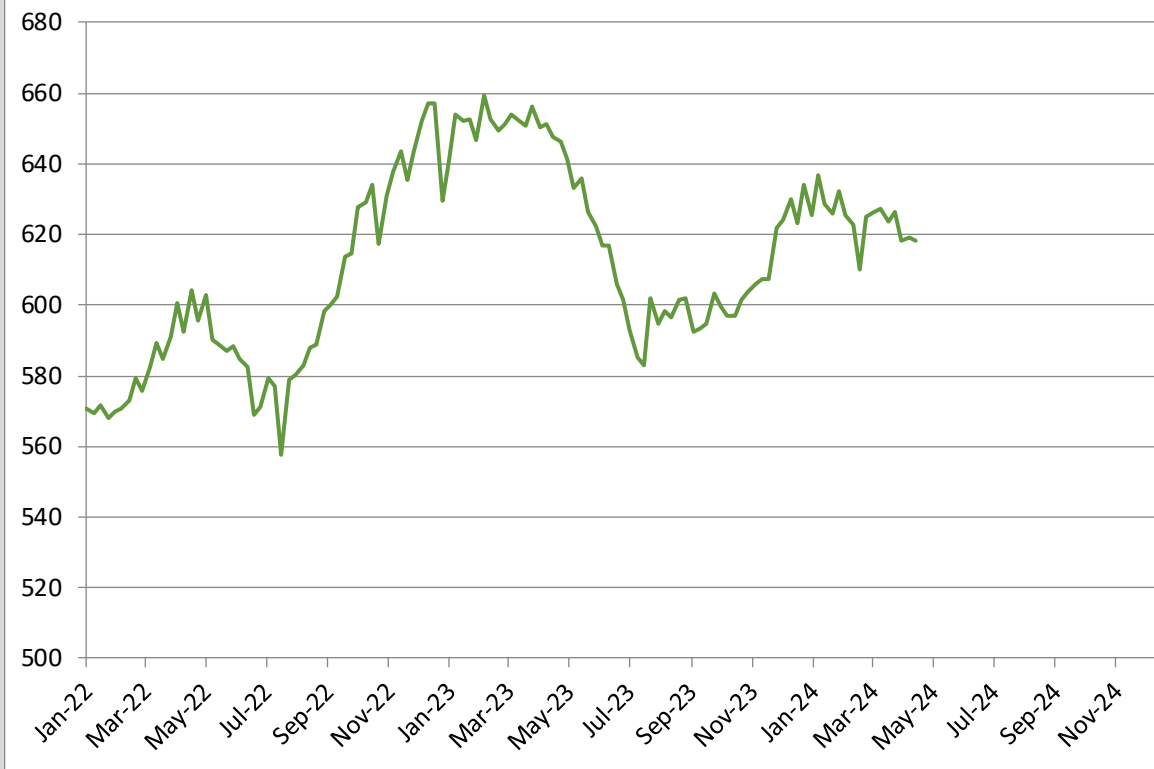
Male Rearing Calves Beef type		Male Rearing Calves Dairy type	
Price in Week 16	252.93	Price in Week 16	121.86
Change y/y	-1.9%	Change y/y	-5.3%



Young Store Cattle Price in	Week 16	3.46	Yearling Male Store Cattle Price	3.84
	Change y/y	+3.7%	Change y/y	+6.4%
Yearling Female Store Cattle Price		3.01		
	Change y/y	+2.3%		



Calves Slaughtered before the Age of 8 Months



Price in Week 16 **618.19 € / 100 kg of carcasse weight**
Change y/y -4.6%