



#### ➔ Live Animal Prices

Last update : 03.05.2024

Prices not received : EL, IT, LU, PL

Semaine / Week : 17

du / from : 22.04.24

au / to : 28.04.24

PRIX DE MARCHÉ NATIONAUX et COMMUNAUTAIRES UE (en Euro & en % du prix de référence)

NATIONAL and COMMUNITY EU MARKET PRICES (in Euro & as % of the reference price)

(Euro/100 kg PC/DW)	YOUNG MALE BOVINES 12>24 m - CATEGORIE A						BULLOCKS - CATEGORIE C						YOUNG BOVINES 8>12 m - CATEGORIE Z						CATEGORIE A/C/Z																			
	U2+U3		R2+R3		O2+O3		U+R+O		Change on last week		%		U2+U3+U4		R3+R4		O3		U+R+O		Change on last week		%		R3		% of ref. price		Change on last week		%							
	U	R	O	URO			U	R	O	URO			U	R	O	URO			U	R	O	URO			R3													
<b>Prix moyens</b>	503.36	496.60		538.06	+ 40.31	+8.1%	405.55	527.19	540.59	531.74	+ 0.90	+0.2%	526.15	519.59		507.32	+ 1.25	+0.2%	535.80	240.92	+ 32.50	+6.5%																
<b>Average prices</b>	503.36	496.60		538.06	+ 40.31	+8.1%	405.55	527.19	540.59	531.74	+ 0.90	+0.2%	526.15	519.59		507.32	+ 1.25	+0.2%	535.80	240.92	+ 32.50	+6.5%																
<b>BE</b>	468.80	440.68		465.13	+1.04	+0.2%													465.13						465.13		+1.04	0.2%										
<b>BG</b>		400.14		400.14		<i>idem</i>													400.14						400.14													
<b>CZ</b>	450.00	456.78	451.27	453.55	- 2.48	-0.5%																																
<b>DK</b>		416.23	395.10	403.68	- 2.82	-0.7%													442.34	456.02	452.22	+1.33	0.3%	438.44		+0.15	0.0%											
<b>DE</b>	470.41	485.15		477.61	+0.87	+0.2%													456.20		456.20				477.30		+0.86	0.2%										
<b>EE</b>		<i>c</i>		<i>c</i>															<i>c</i>		<i>c</i>				<i>c</i>													
<b>IE</b>							509.58	526.45	548.26	536.26	- 0.17	0.0%													536.26		-0.17	0.0%										
<b>EL</b>		422.20	469.50	443.20	<i>idem</i>	<i>idem</i>															512.55	512.55	+14.50	2.9%	476.75		+7.01	1.5%										
<b>ES</b>	522.04	531.91		525.46	+5.60	+1.1%							523.77	533.05	512.55	529.41	- 2.89	-0.5%							527.58		+1.06	0.2%										
<b>FR</b>	516.41	518.08	497.28	514.11	- 2.70	-0.5%			533.00	509.28	+ 6.24	1.2%													513.36		-1.32	-0.3%										
<b>HR</b>	522.71	517.84		519.00	+3.48	+0.7%													767.49		518.93	+ 4.61	0.9%	519.00		+3.53	0.7%											
<b>IT</b>	542.95	505.17	474.69	536.60	<i>idem</i>	<i>idem</i>													595.33	561.68	577.42	578.20			538.70													
<b>CY</b>					<i>idem</i>	<i>idem</i>																																
<b>LV</b>		395.55		395.55	-72.23	-15.4%													358.58		358.58	-15.35	-4.1%	387.96		-60.54	-13.5%											
<b>LT</b>		424.51	426.21	425.72	+7.06	+1.7%													<i>c</i>		<i>c</i>				<i>c</i>													
<b>LU</b>	<i>c</i>	<i>c</i>		<i>c</i>																					<i>c</i>													
<b>HU</b>		204.15		204.15	+0.32	+0.2%																			204.15		+0.32	0.2%										
<b>MT</b>																																						
<b>NL</b>		475.77	232.11	351.71	+9.12	+2.7%													472.20	445.84	450.34	+3.43	0.8%	427.68		+4.74	1.1%											
<b>AT</b>	463.28	473.77		466.73	- 1.03	-0.2%							540.40	539.99	540.23	+ 8.21	1.5%							472.34		-0.32	-0.1%											
<b>PL</b>		486.16	490.82	489.27	- 0.12	-0.0%													482.50	419.24	436.13	-0.11	0.0%	488.82		-0.12	0.0%											
<b>PT</b>	503.02	495.50		499.72	- 4.79	-1.0%													480.86	493.28	491.24	+ 24.58	5.3%	495.70		+9.13	1.9%											
<b>RO</b>	407.13	439.23	462.52	454.23	+1.72	+0.4%													405.69	436.51	456.97	453.97	+14.52	3.3%	454.04		+11.10	2.5%										
<b>SI</b>	477.92	491.29	470.80	484.35	- 3.05	-0.6%													530.94	381.18	388.84	397.34	- 36.80	-8.5%	477.17		- 5.83	-1.2%										
<b>SK</b>		468.32	<i>c</i>	<i>c</i>																	<i>c</i>	<i>c</i>			<i>c</i>													
<b>FI</b>		477.70	471.67	472.96	- 5.03	-1.1%																			472.96		- 5.03	-1.1%										
<b>SE</b>		515.16	2885.87	1890.64	+1365.41	+260.0%																			1809.75		+1284.44	244.5%										

Source : Member States



# Meat Market Observatory – Beef and Veal

## PRI.EU.BOV

### EU Weekly Beef Carcase Prices



03.05.2024  
du / from : 22.04.24  
au / to : 28.04.24

Prices not received in :

PRIX DE MARCHE - ETATS MEMBRES  
MARKET PRICES - MEMBER STATES

( €/100kg PC/DW )	BE	BG	CZ	DK	DE	EE	IE	EL	ES	FR	HR	IT	CY	LV	LT	LU	HU	MT	NL	AT	PL	PT	RO	SI	SK	FI	SE	EU	Change last week	%	UK	
Young Bovines 8-12m Z-U2			138.4	430.6			508.6		551.4		812.0	640.1				c	c		477.0	568.4		509.5	429.2	561.7			532.5	553.8	-0.52	-0.09%		
Young Bovines 8-12m Z-U3			c	437.3			515.3		549.7			525.0				c			474.0	566.7		500.3					512.8	546.4	+1.51	+0.28%		
Young Bovines 8-12m Z-R2			c	447.8	463.0		c	496.2		535.4		573.4		363.0		c	c		472.0	543.1	486.3	505.7	445.1	371.7			520.7	522.6	+2.12	+0.41%		
Young Bovines 8-12m Z-R3				443.2			c	511.0	536.6			536.3		365.1		c			475.0	549.9	488.4	481.7	431.3	511.7			545.9	523.3	-2.74	-0.52%		
Young Bovines 8-12m Z-O2				c	428.3	449.4		c	477.1	490.0	493.1	491.7	571.3		303.9		c	c	412.0	c	402.5	441.8	429.5	371.7	c		529.5	463.5	+2.01	+0.44%		
Young Bovines 8-12m Z-O3			509.9	c	435.7			482.5	489.9			215.0		296.3		c			438.0	c	388.6	427.9	485.0				566.2	464.6	-2.07	-0.44%		
<b>Young Bovines 8 &gt; 12 m</b>			<b>509.9</b>	<b>c</b>	<b>435.9</b>	<b>452.6</b>	<b>c</b>	<b>499.1</b>	<b>490.0</b>	<b>523.6</b>	<b>497.5</b>	<b>588.7</b>	<b>319.7</b>	<b>c</b>	<b>c</b>	<b>c</b>	<b>c</b>	<b>432.8</b>	<b>c</b>	<b>422.9</b>	<b>462.2</b>	<b>436.7</b>	<b>399.1</b>	<b>c</b>	<b>c</b>	<b>535.7</b>	<b>502.5</b>	<b>+0.10</b>	<b>+0.02%</b>			
Young Bulls 12>24m A-U2	496.8		476.1	430.5	496.6		517.6	452.5	548.2	551.0	583.5	576.8		473.1		c	c	198.0	475.0	488.0	501.8	525.7	414.8	508.2	c	509.3	524.4	531.9	+1.95	+0.37%		
Young Bulls 12>24m A-U3	481.9		492.0	421.5	492.5		519.6	420.4	551.5	536.0	535.0	545.0				c			499.0	486.4	496.3	534.2	453.0	497.0	c	514.7	525.6	519.5	-0.45	-0.09%		
Young Bulls 12>24m A-R2	454.5	442.0	460.5	412.8	490.1		c	507.1	420.0	539.7	526.0	525.6	513.1		400.9	425.2	c	207.2	488.0	478.6	493.0	485.6	438.8	494.4	475.7	479.3	513.0	500.1	-0.06	-0.01%		
Young Bulls 12>24m A-R3	406.8	370.8	471.7	420.8	488.7		c	507.7	447.3	532.2	518.0	517.8	503.5		400.8	429.6	c		470.0	479.4	486.8	525.6	447.4	499.0	466.1	486.9	520.7	502.3	-0.16	-0.03%		
Young Bulls 12>24m A-O2	411.7	479.0	431.4	369.9	448.6		c	482.5	431.4	495.9	470.0	535.7	456.7	448.0	370.9	399.6	c	207.7	472.0	437.1	466.4	453.6	440.9	450.1	423.7	447.2	507.6	461.0	-0.53	-0.11%		
Young Bulls 12>24m A-O3	367.3	481.5	465.0	376.6	459.2		c	493.8	462.0	507.5	470.0	528.0	439.1	450.0	314.1	415.6	c	146.7	307.0	442.1	468.5	457.8	443.0	484.1	c	454.3	5198.0	852.8	+385.86	+82.63%		
<b>Young Bulls 12 &gt; 24 m</b>	<b>482.9</b>	<b>478.6</b>	<b>461.6</b>	<b>399.0</b>	<b>486.3</b>	<b>c</b>	<b>506.1</b>	<b>438.0</b>	<b>537.8</b>	<b>525.8</b>	<b>528.4</b>	<b>562.9</b>	<b>448.0</b>	<b>381.3</b>	<b>c</b>	<b>c</b>	<b>190.1</b>	<b>420.7</b>	<b>483.0</b>	<b>477.3</b>	<b>505.7</b>	<b>441.4</b>	<b>491.9</b>	<b>c</b>	<b>461.6</b>	<b>1 661.3</b>	<b>541.9</b>	<b>+38.32</b>	<b>+7.61%</b>			
Bulls B R3			378.4	452.5	330.6	427.3		473.2			528.7	491.8		363.2	435.1	c			448.7	479.8	408.2	427.9	504.8	c	514.4	487.2	475.5	+1.75	+0.37%			
<b>Bulls</b>			<b>378.4</b>	<b>452.5</b>	<b>330.6</b>	<b>427.3</b>		<b>473.2</b>			<b>528.7</b>	<b>491.8</b>		<b>363.2</b>	<b>435.1</b>	<b>c</b>			<b>448.7</b>	<b>479.8</b>	<b>408.2</b>	<b>427.9</b>	<b>504.8</b>	<b>c</b>	<b>514.4</b>	<b>487.2</b>	<b>475.5</b>	<b>+1.75</b>	<b>+0.37%</b>			
Bullocks C-U2							528.2					617.1				c			515.7	481.9	520.0	405.2				543.2	530.6	-2.36	-0.44%			
Bullocks C-U3				c	454.5	552.1		529.7				736.0				c			524.7				511.7			543.2	532.6	+0.17	+0.03%			
Bullocks C-U4							526.2					534.0				c			520.7		700.0	445.1				577.8	527.1	-0.33	-0.06%			
Bullocks C-R3				472.0	466.8		521.1			533.0		501.2				c			508.4		520.0	445.1	505.8			518.9	518.9	-2.01	-0.39%			
Bullocks C-R4				c	403.1	540.0		523.1								c			529.0		445.1					510.7	521.6	+0.78	+0.15%			
Bullocks C-O3				c	433.6	433.0	c	510.8		467.0		432.9		383.2		c	c		451.3		420.0	474.1	471.7	c		497.8	500.1	+1.26	+0.25%			
Bullocks C-O4					422.2		514.3									c			c						492.1	513.4	-2.66	-0.51%				
<b>Bullocks</b>			<b>c</b>	<b>439.9</b>	<b>484.3</b>	<b>c</b>	<b>517.6</b>			<b>491.0</b>		<b>620.7</b>			<b>c</b>	<b>c</b>			<b>c</b>	<b>493.2</b>	<b>449.8</b>	<b>500.4</b>	<b>c</b>		<b>461.6</b>	<b>502.6</b>	<b>513.2</b>	<b>-0.36</b>	<b>-0.07%</b>			
Cows D-R3	453.7	376.0	372.7	394.7	430.8		c	469.1		397.5	546.0	427.0	429.1		410.2	376.2	c	232.2		329.0	405.3	441.2	382.1	414.3	349.8	c	322.7	492.4	493.5	+4.51	+0.92%	
Cows D-R4			443.3	375.5	383.4	430.8		c	458.4	437.5	536.0	419.4	431.7		407.7	375.6	c	185.5		430.0	413.3	440.0	449.5	430.9	352.3	c	299.6	472.0	444.3	+3.13	+0.71%	
Cows D-O2	390.7	368.2	345.1	352.6	409.2		c	425.6	269.2	363.1	486.0	305.6	365.1		366.7	331.4	c	182.5		396.0	368.0	394.0	387.8	317.5	260.5	306.4	469.2	390.0	+2.81	+0.73%		
Cows D-O3	408.7	336.1	332.8	373.8	417.7		c	424.8	265.0	380.5	455.0	379.7	407.5		372.5	368.1	c	198.6		426.0	382.7	415.7	343.3	405.0	323.2	299.4	309.7	478.9	417.8	+4.39	+1.06%	
Cows D-O4	413.4	289.7	358.4	373.2	421.5		c	422.7		449.0	440.0	424.3			378.3	369.7	c	185.6		448.0	388.2	417.3	368.7	389.7	352.3	c	292.8	455.6	415.6	+1.87	+0.45%	
Cows D-P2	334.0	324.4	272.7	325.9	348.7		c	384.6	231.0	324.7	401.0	328.0	325.6	260.0	323.2	296.1	c	142.4		351.0	335.3	358.8	262.0	370.3	269.7	188.6	288.7	412.5	347.7	+1.73	+0.50%	
Cows D-P3	364.3	339.1	207.1	354.3	359.6		c	406.8	223.4	318.6	423.0	450.0	362.8	258.0	337.7	299.6	c	292.7		376.0	351.7	363.6	235.1	382.1	306.7	c	308.0	444.4	396.3	+2.24	+0.57%	
<b>Cows</b>	<b>372.9</b>	<b>347.6</b>	<b>324.5</b>	<b>353.2</b>	<b>405.4</b>	<b>c</b>	<b>416.1</b>	<b>253.6</b>	<b>373.3</b>	<b>469.3</b>	<b>368.2</b>	<b>361.2</b>	<b>259.4</b>	<b>365.6</b>	<b>330.9</b>	<b>c</b>	<b>187.5</b>	<b>399.9</b>	<b>392.4</b>	<b>401.7</b>	<b>316.3</b>	<b>388.8</b>	<b>320.4</b>	<b>c</b>	<b>299.3</b>	<b>457.2</b>	<b>392.7</b>	<b>+3.01</b>	<b>+0.77%</b>			
Heifers E-U2	554.6		401.7	435.4	456.9		535.2		562.5			596.6				c	c		508.4	504.1	535.6	403.5	495.4	c	512.6	500.2	577.6	+1.51	+0.26%			
Heifers E-U3	517.6		c	450.8	459.9		538.3	553.2	594.0		537.4	605.4		400.8		c			485.3	497.2	526.7	445.1	474.1	c	473.4	515.7	560.7	+2.50	+0.45%			
Heifers E-U4				c	441.5	459.1		536.7				549.6	635.2			c			475.0	502.5			450.6	491.3		532.8	491.5	+2.47	+0.50%			
Heifers E-R2	504.6	588.0	379.1	431.9	450.2		c	519.1		553.5	545.0	539.9	563.1		397.9		c	222.4		312.0	460.9	485.2	503.2	431.5	465.5	c	478.9	503.1	506.1	+5.89	+1.18%	
Heifers E-R3	483.4	375.9	380.3	435.8	454.0		c	525.8		536.9	550.0	536.6	561.0		408.4	399.4	c	198.6		257.0	473.8	498.8	521.9	423.8	477.7	c	466.6	512.8	514.5	+2.95	+0.50%	
Heifers E-R4			431.1	c	428.3	455.9		c	527.2		605.9	535.0	530.9		382.9	405.9	c	183.6		194.0	464.0	498.6	401.8	452.7	480.4	c	472.5	511.6	511.4	+1.75	+0.34%	
Heifers E-O2	382.3	370.8	334.1	368.1	393.6		c	493.5		455.9		547.6	415.9		335.7	350.6	c	209.9		354.0	397.1	436.8	455.8	413.8	421.1	249.4	4					

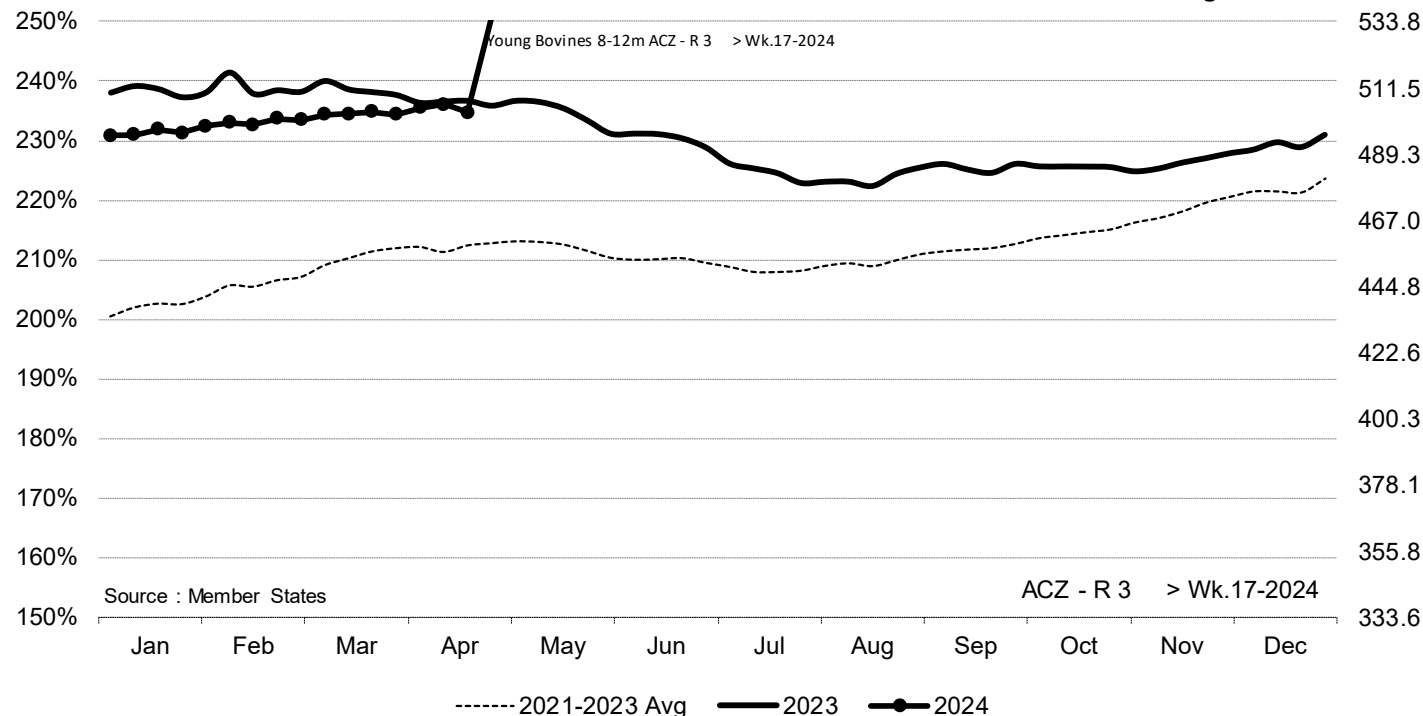
## EU Weekly Beef Carcase Prices



ACZ - R 3 > Wk.17-2024

% of Reference Price

€/100 kg cwe

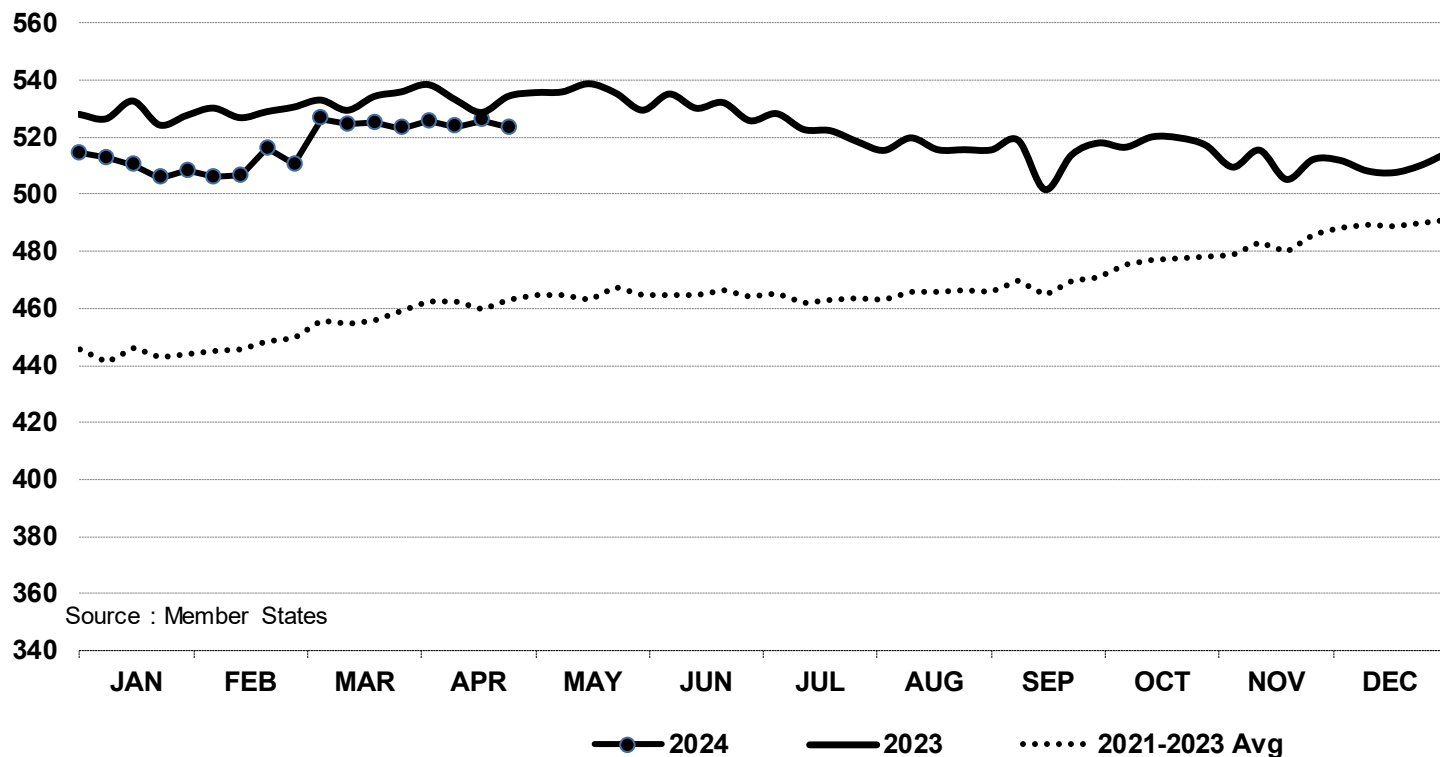


Price in week 17 : **535.80**  
 % change y/y : **+ 5.95%**  
 % Ref. Price in wk 0 : **227.4%**

Average price in March 2024 : **502.72**  
 % change y/y : **- 1.67%**



In € / 100 kg      Young Bovines 8-12m Z - R 3      > Wk.17-2024

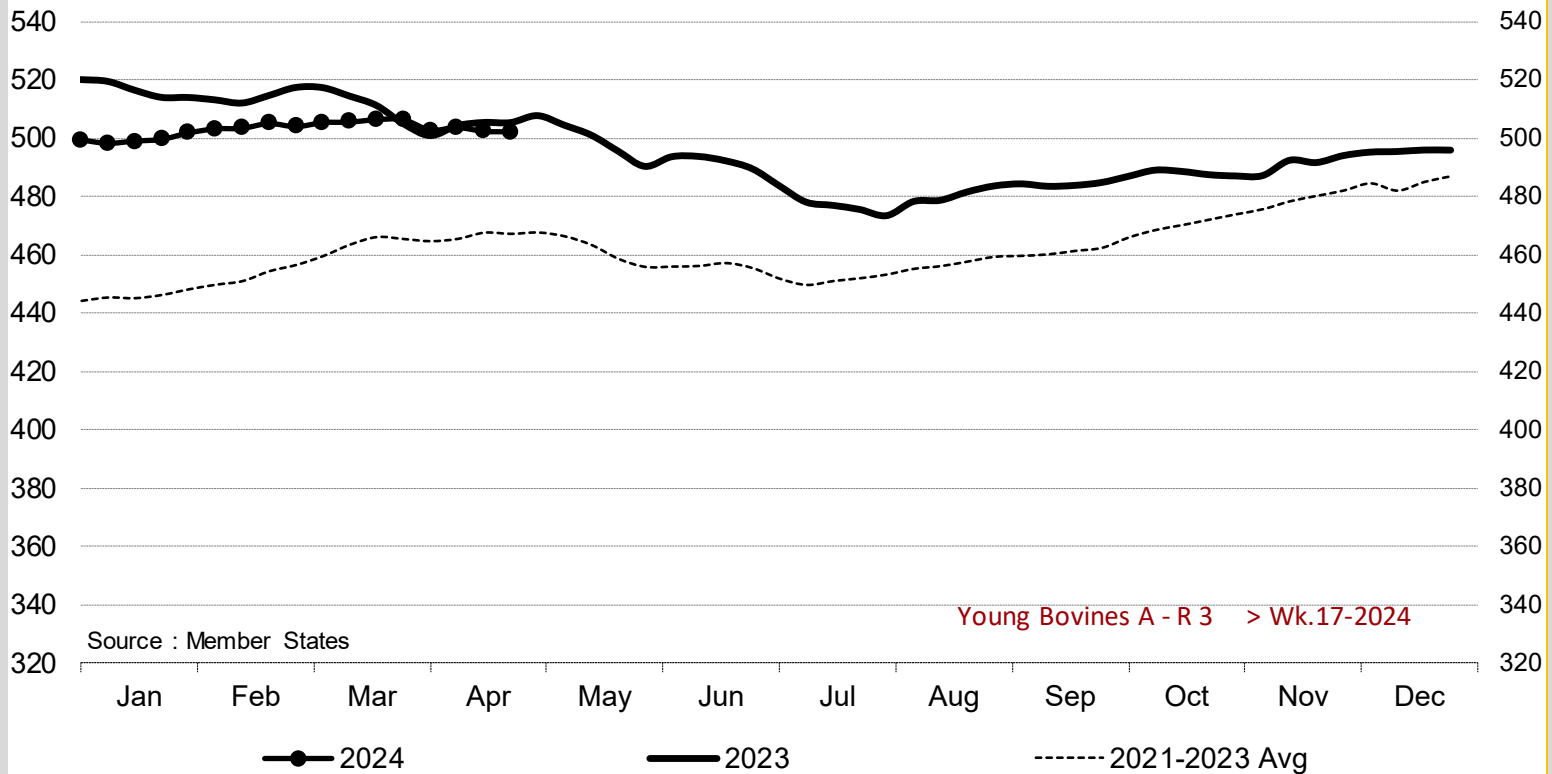


Source : Member States

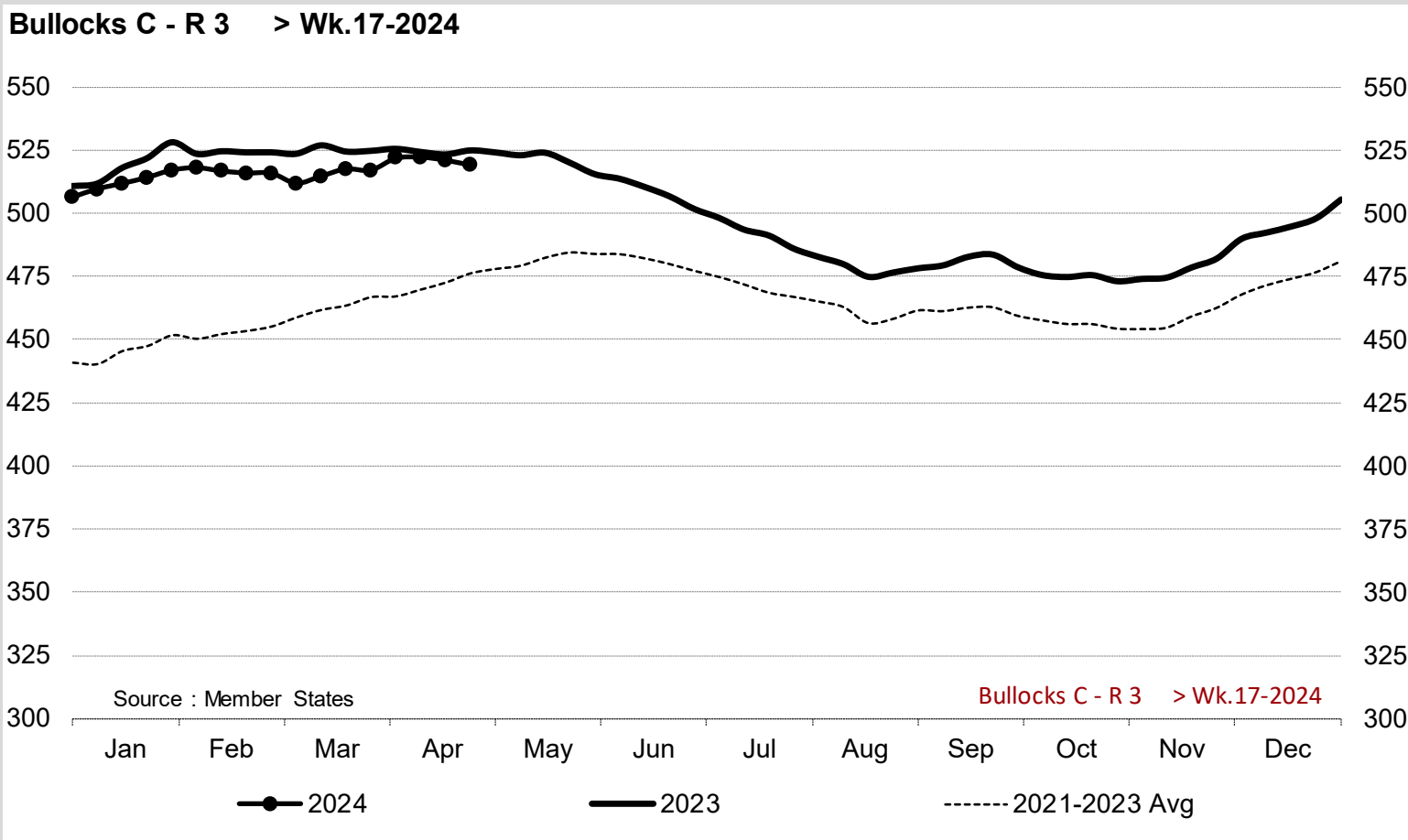
Price in week 17 : **523.27**      29/03/2024      Average price in March 2024 : **523.36**  
 % change y/y : **- 2.1%**      % change y/y : **- 1.7%**



## Young Bovines A - R 3 > Wk.17-2024



Price in week 17 : **502.26**      Average price in March 2024 : **505.83**  
 % change y/y : **- 0.6%**      % change y/y : **- 1.5%**

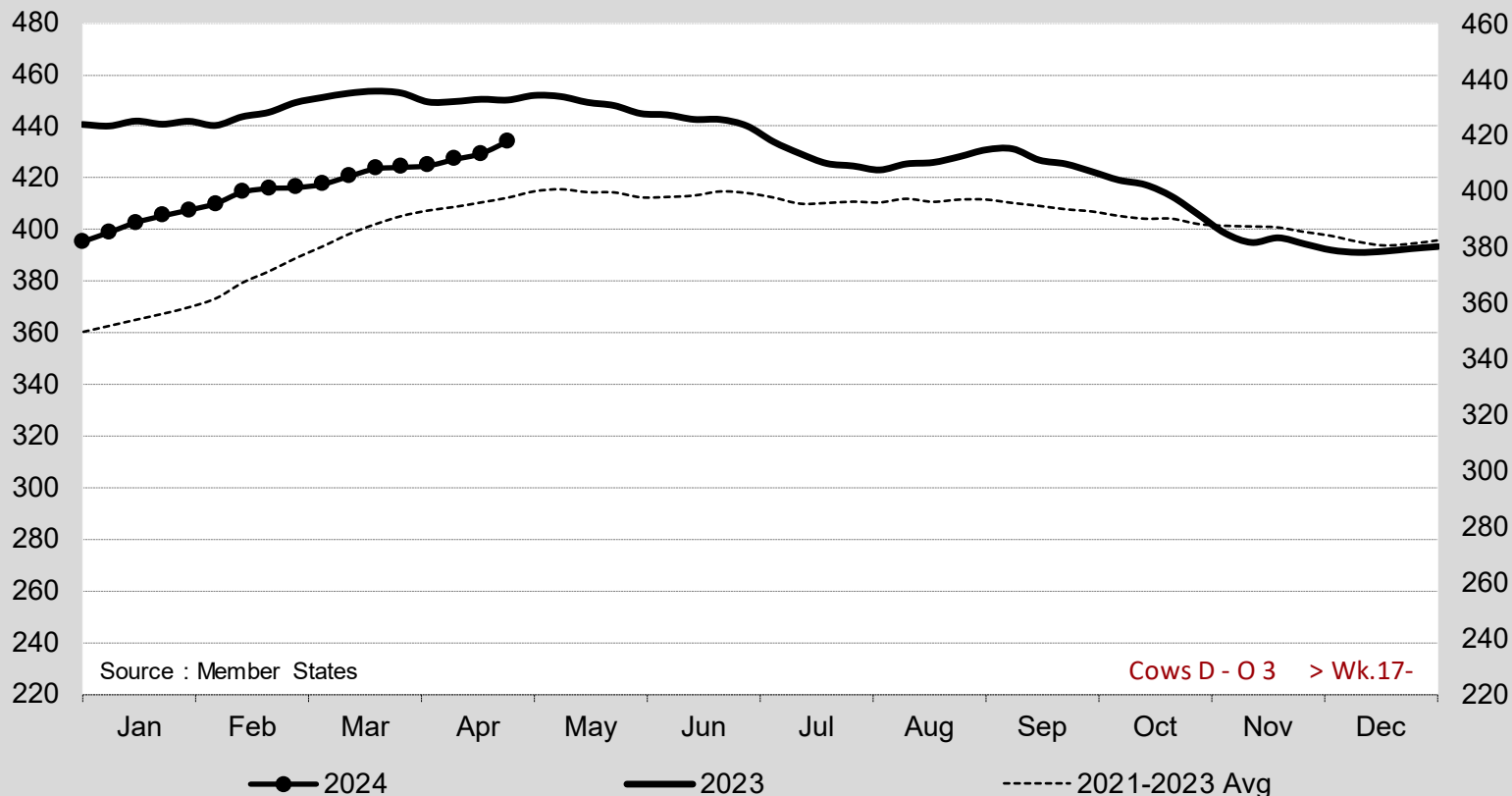


Price in week 17 : **518.95**  
 % change y/y : **- 1.1%**

Average price in March 2024 : **515.28**  
 % change y/y : **- 1.8%**



**Cows D - O 3 > Wk.17-2024**



Source : Member States

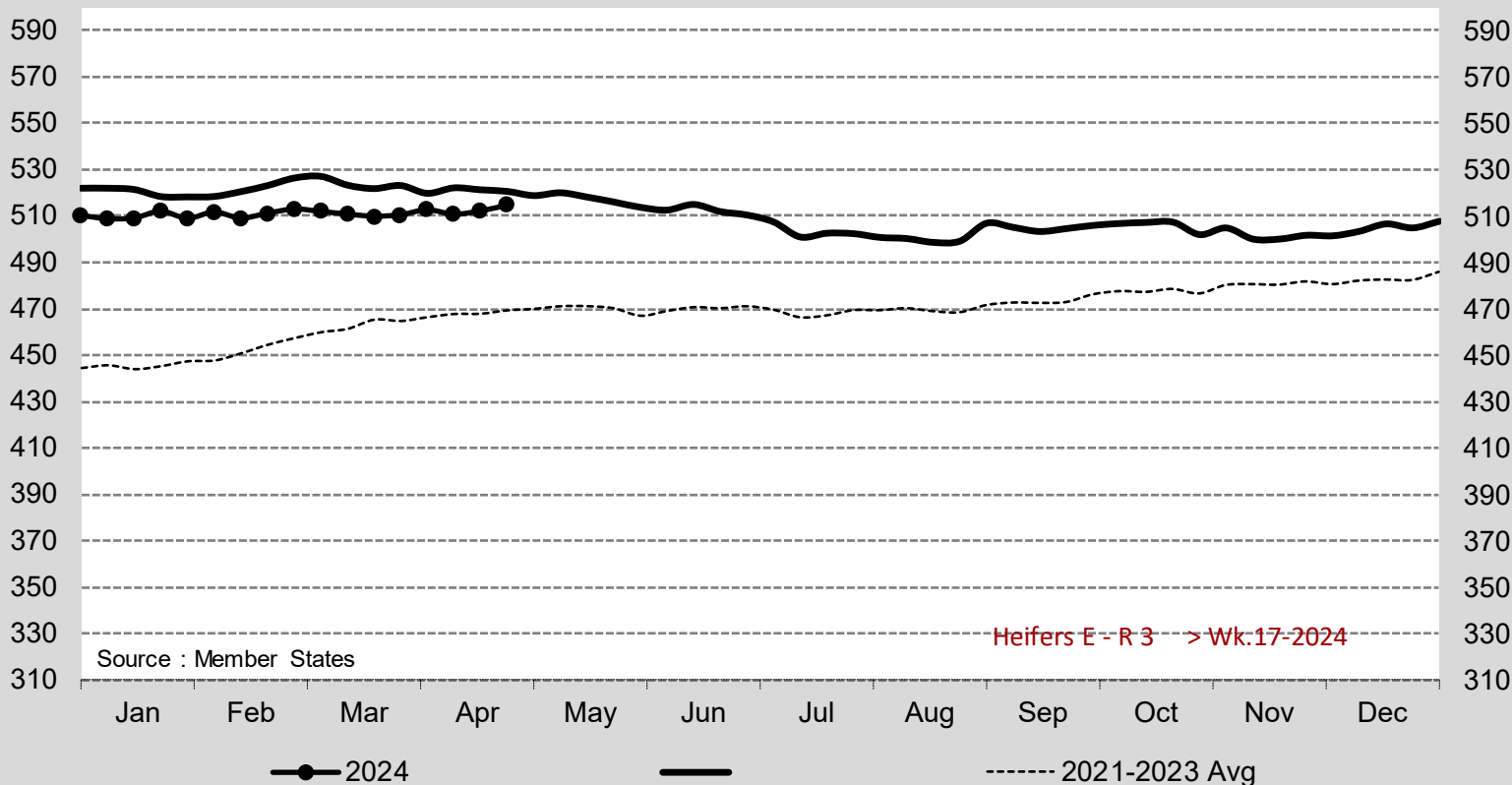
Cows D - O 3 > Wk.17-

Price in week 17 : **417.84**  
 % change y/y : **- 3.4%**

Average price in March 2024 : **405.57**  
 % change y/y : **- 6.6%**



### Heifers E - R 3 > Wk.17-2024



Source : Member States

Heifers E - R 3 > Wk.17-2024

Price in week 17 : **514.47**  
% change y/y : **- 1.2%**

Average price in March 2024 : **510.74**  
% change y/y : **- 2.6%**



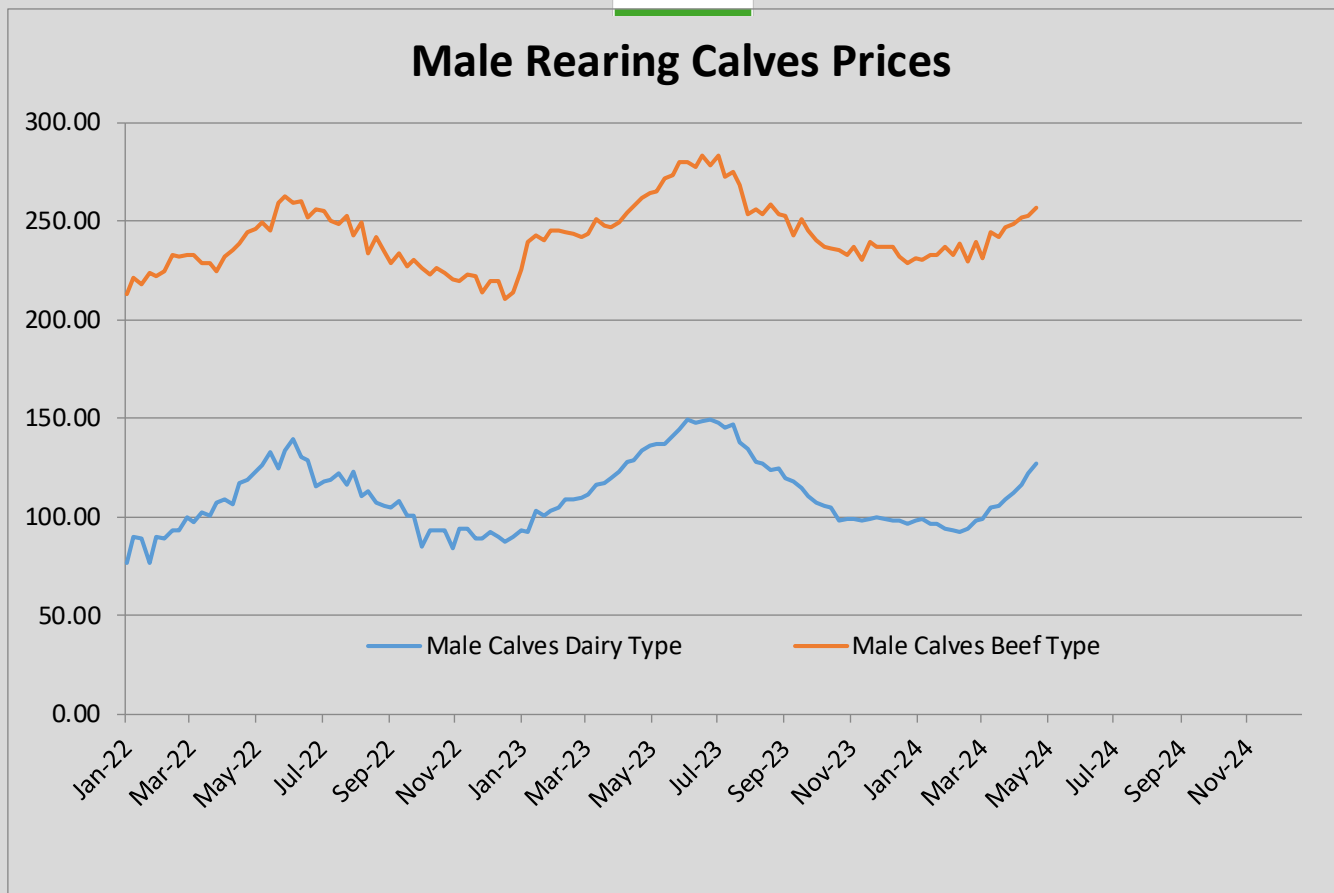


European Commission  
E3 - Animal Products

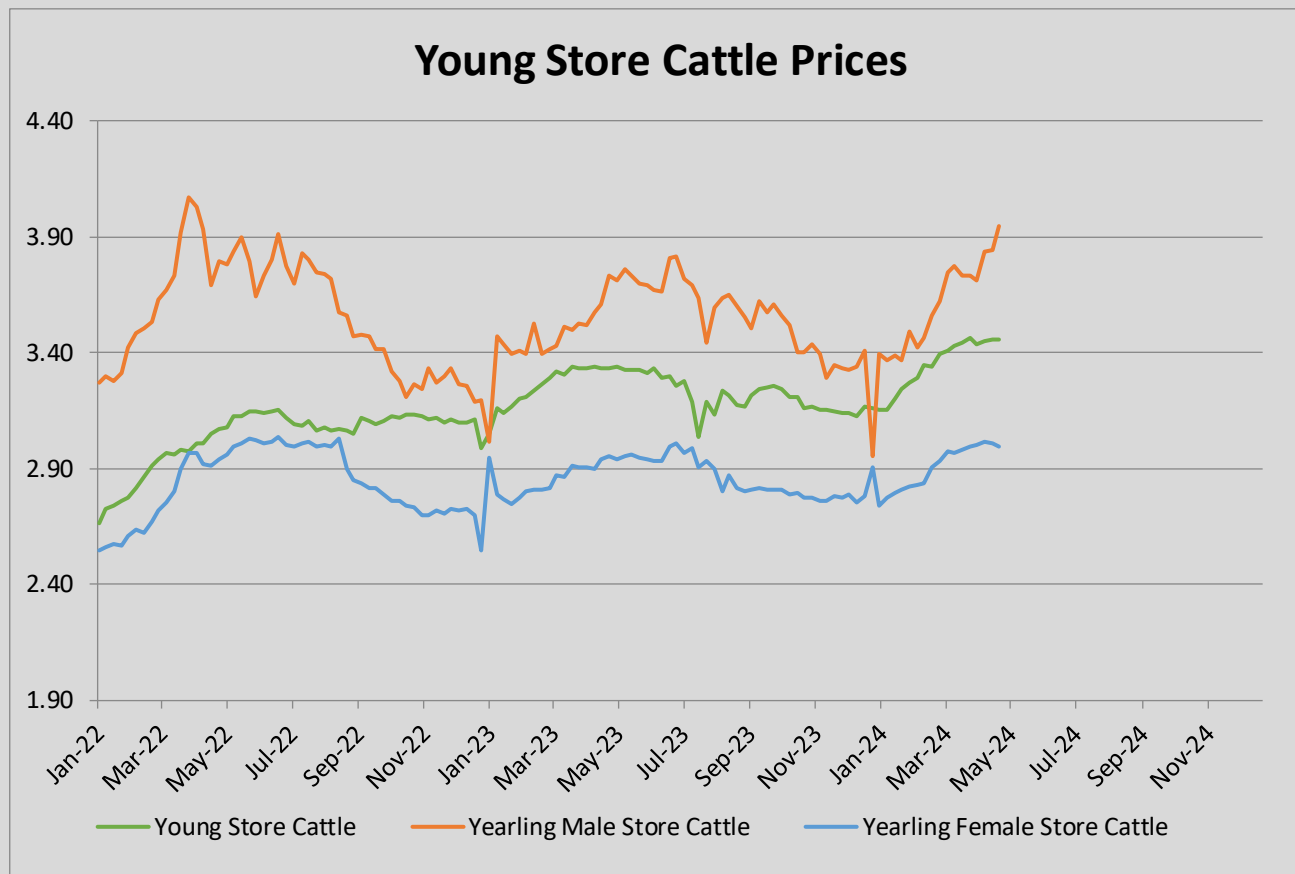
Week 17 from 22/04/2024  
to 28/04/2024

### Prices of Live Bovine Animals

Male Calves aged between 8 days and 4 weeks															
	BE	DK	DE	IE	ES	FR	IT	NL	AT	PL	PT	RO	SI	SE	EU
<b>Male Calves Dairy type</b>															
Market Price € / head	87.00	100.55	131.30	125.76	111.43	117.44	143.76	110.00	132.62	200.97		47.81			127.43
Previous week market price	83.67	97.17	124.31	96.90	111.41	113.05	143.76	104.00	131.65	201.02		47.82			121.86
Difference with previous week	-3.33	3.38	6.99	28.86	0.02	4.39	0.00	6.00	0.97	-0.05		-0.01			5.58
% of EU average	68	79	103	99	87	92	113	86	104	158		38			100
Coefficient	3.10	3.17	21.70	8.60	4.61	18.40	10.62	8.94	3.14	11.60		6.13			
<b>Male Calves Beef type</b>															
Market Price € / head	360.56		231.30	159.48	217.94	272.91	246.88	210.00	453.88	309.18		333.80			256.49
Previous week market price	357.78		224.10	157.07	213.32	272.20	246.88	201.00	428.08	309.26		333.85			252.93
Difference with previous week	-2.78		7.20	2.41	4.62	0.71	0.00	9.00	25.80	-0.08		-0.06			3.56
% of EU average	141		90	62	85	106	96	82	177	121		130			100
Coefficient	3.57		17.29	9.28	11.30	27.46	9.18	6.31	2.77	8.49		4.35			
Store Cattle															
	BE	DK	DE	IE	ES	FR	IT	NL	AT	PL	PT	RO	SI	SE	EU
<b>Young Store Cattle</b>															
Market Price € / kg	4.93			2.90	3.60	3.71	3.62		2.90		3.10			2.26	3.46
Previous week market price	4.93			2.93	3.58	3.68	3.62		2.63		3.29			2.38	3.46
Difference with previous week	0.00			-0.03	0.02	0.03	0.00		0.07		-0.19			-0.13	-0.00
% of EU average	143			84	104	107	105		84		90			65	100
Coefficient	5.45			20.34	7.69	44.62	7.21		5.73		4.37			4.59	
<b>Yearling Male Store Cattle</b>															
Market Price € / kg	4.61		6.19	2.59		3.34	3.96		2.58		3.27			2.48	3.95
Previous week market price	4.61		5.78	2.60		3.34	3.96		2.72		3.17			2.23	3.84
Difference with previous week	0.00		0.41	-0.01		0.00	0.00		-0.14		0.10			0.25	0.10
% of EU average	117		157	66		85	100		65		83			63	100
Coefficient	2.85		25.17	24.15		21.50	16.48		4.92		1.46			3.47	
<b>Yearling Female Store Cattle</b>															
Market Price € / kg	3.53		3.21	2.57		3.18	2.99		1.60		2.77			2.23	2.99
Previous week market price	3.53		3.08	2.63		3.20	2.99		2.32		2.89			2.36	3.01
Difference with previous week	0.00		0.13	-0.06		-0.02	0.00		-0.72		-0.12			-0.13	-0.02
% of EU average	118		107	86		106	100		53		93			74	100
Coefficient	5.14		25.14	14.29		32.54	13.84		3.79		2.18			3.09	
Calves Slaughtered before 8 months															
	BE	DK	DE	IE	ES	FR	IT	NL	AT	PL	PT	RO	SI	SE	EU
Market Price € / 100 kg	700.00		556.00			707.40	534.50	568.13			473.19		453.34		610.65
Previous week market price	704.25		577.00			713.00	534.50	577.95			488.96		456.66		618.19
Difference with previous week	-4.25		-21.00			-5.60	0.00	-9.82			-15.77		-3.32		-7.54
% of EU average	115		91			116	88	93			77		74		100
Coefficient	7.99		7.91			28.82	15.97	37.45			1.48		0.37		



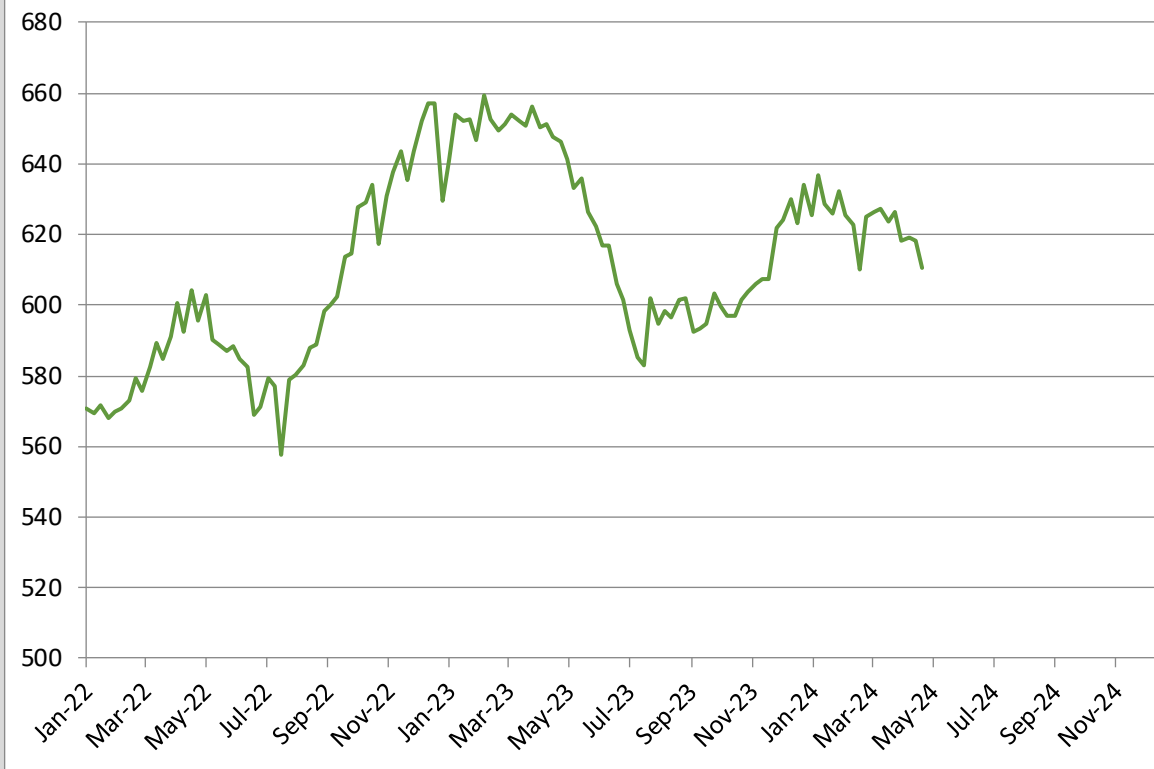
<b>Male Rearing Calves Beef type</b> Price in Week 17 <b>256.49</b> Change y/y            -2.0%	<b>Male Rearing Calves Dairy type</b> Price in Week 17 <b>127.43</b> Change y/y            -4.8%
---	--



<b>Young Store Cattle Price in</b>	<b>Week 17</b>	<b>3.46</b>	<b>Yearling Male Store Cattle Price</b>	<b>3.95</b>
	Change y/y	+3.7%	Change y/y	+5.7%
<b>Yearling Female Store Cattle Price</b>		<b>2.99</b>		
	Change y/y	+1.2%		



### Calves Slaughtered before the Age of 8 Months



**Price in Week 17**      **610.65 € / 100 kg of carcasse weight**  
Change y/y      -5.5%