

Cereals, Oilseeds and Protein Crops

EU Feed Protein Balance Sheet

CROPS Market Observatory

5 July 2019



May 2019

EU Feed Protein Balance Sheet

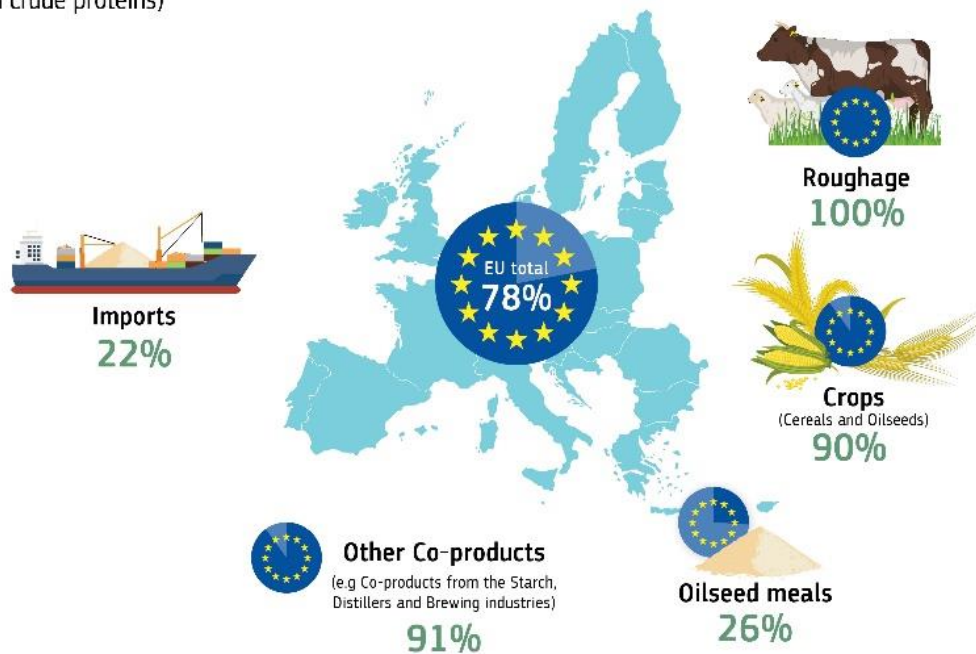
2017/18	Million tonnes						Protein content (feed use) (G)	Million tonnes (crude protein)			% of total feed use
	Total EU production (A)	EU imports (B)	EU exports (C)	Total EU Domestic Use (D) = (A) + (B) - (C)	EU total feed use (E)	Feed use EU origin (F)		EU total feed use (H) = (E) * (G)	Feed use EU origin (I) = (F) * (G)	% feed use of EU origin (I) / (H)	
CROPS					179.7	159.0		18.54	16.70	90%	22%
CO-PRODUCTS					85.3	48.4		25.95	10.25	39%	31%
<i>OILSEED MEALS (of which)</i>	29.4	24.2	1.2	52.5	52.3	16.1		20.7	5.5	26%	24%
<i>OTHERS CO-PRODUCTS</i>	36.3	4.6	1.2	39.7	35.7	32.9		5.2	4.8	91%	6%
NON-PLANT SOURCES					9.1	9.1		2.52	2.49	99%	3%
ROUGHAGE					1,351	1,351		38	38	100%	45%
TOTAL								85	67	79%	

Legend

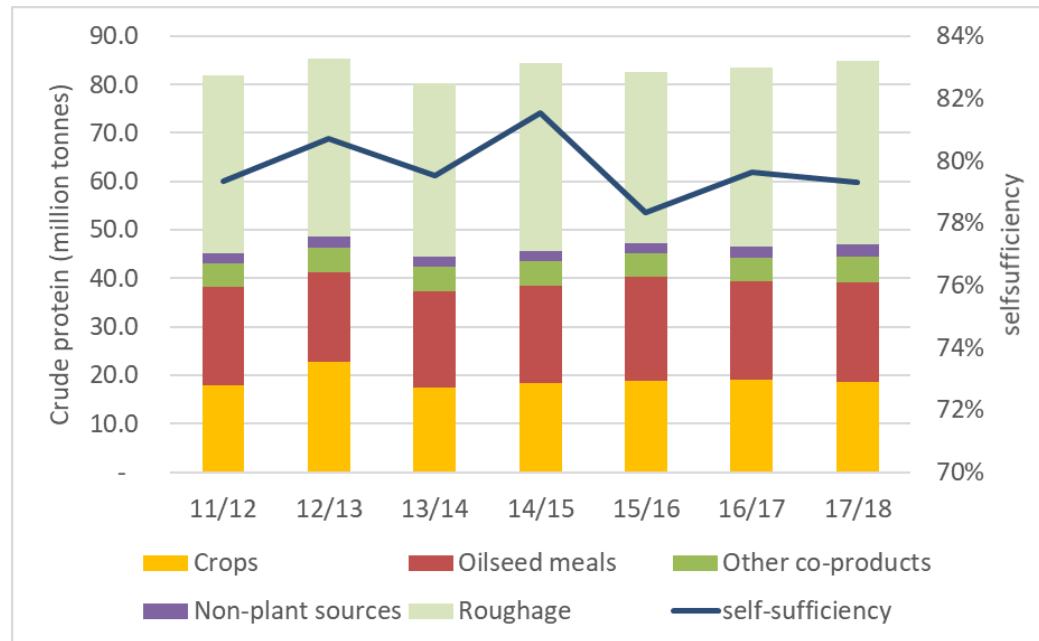
Low-Pro: Less than 15% protein content	56.56	54.68	97%
Medium-Pro: 15-30% protein content	4.90	4.24	86%
High-Pro: 30-50% protein content	20.89	6.07	29%
Super-Pro: Over 50% protein content	2.58	2.36	92%

EU self-sufficiency per protein source

(in crude proteins)



Comparison over the years



Next steps

Update for the 2018/19 marketing year

- *Provisional version available in September 2019*

Suggestions for further improvements?

- *new data sources*
- *further extension of the protein sources coverage*
- *new classification / presentation*
- *changes in methodology*

Thank you for your attention!

**Market data for cereals, oilseeds and protein
crops are available at the
EU Crops Market Observatory**

**[https://ec.europa.eu/agriculture/market-
observatory/crops](https://ec.europa.eu/agriculture/market-observatory/crops)**