



GREX - Groupe de travail Prévisions Pêches et Nectarines
FWG - Forecast Working Group for Peaches and nectarines



Vol. 02 - PRICES

The peaches and nectarines market in the EU: **prices for fresh products**

----- 20 May 2019 -----

Le marché de la Pêche et de la Nectarine dans l'UE: **prix des produits frais**

Contact point:

European Commission - DG Agri G2

Clause de non-responsabilité: le présent document de la Commission européenne a pour objet de contribuer à l'analyse de la situation du marché des fruits à noyau dans l'UE. La Commission n'assume aucune responsabilité quant aux informations qu'il contient.

Sources : les données proviennent dans l'essentiel des experts et des statistiques officielles; ils peuvent avoir été complétées avec d'autres sources. Leur reproduction ou leur utilisation sont autorisées à condition de mentionner leur source.

Exclusion of liability: this document of the European Commission aims to contribute to the analysis of the stonefruit market situation in the EU.

The Commission accepts no responsibility for the information contained herein.

Data sources: data come mainly from experts and official statistics; they may have been supplemented with data from other types of sources.

Their reproduction or use is permitted with mention their source.

INDEX - Part 2 - PRICES

Index of tables and graphs

Prix à la production

Tableau 4.1	: Prix à la production des pêches
Graphique 4.10	: Prix à la production des pêches dans l'UE
Graphique 4.1	: Prix à la production des pêches en Espagne
Graphique 4.2	: Prix à la production des pêches en France
Graphique 4.3	: Prix à la production des pêches en Italie
Graphique 4.4	: Prix à la production des pêches au Grèce
Tableau 4.2	: Prix à la production des nectarines
Graphique 4.5	: Prix à la production des nectarines en Espagne
Graphique 4.6	: Prix à la production des nectarines en France
Graphique 4.7	: Prix à la production des nectarines en Italie
Graphique 4.8	: Prix à la production des nectarines en Grèce
Tableau 4.3	: Prix à la production des abricots
Graphique 4.9	: Prix à la production des abricots en Espagne
Graphique 4.10	: Prix à la production des abricots en France
Graphique 4.11	: Prix à la production des abricots en Italie
Tableau 4.4	: Prix à la production des kiwis
Graphique 4.12	: Prix à la production des kiwis en Italie
Graphique 4.13	: Prix à la production des kiwis au Portugal
Tableau 4.5a-b	: Prix à la production des pêches blanches et jaunes - par marchés
Tableau 4.6a-b	: Prix à la production des nectarines blanches et jaunes - par marché

Tab 4.1 Prix à la production : PÊCHES (€/100kg) - à prix courants
Règlement d'exécution (UE) No 543/2011 de la Commission

Semaine	Espagne												Weekly 5 year MAX	Weekly 5 year MIN	France										Weekly 5 year MAX	Weekly 5 year MIN		
	2010	2011	2012	2013	2014	2015	2016	(Previous) 2017	Current 2018	Weekly 5 year average	% histo. Avg	% avg '13-'17 to 4 weeks ago			% 2018 to 4 weeks ago	2012	2013	2014	2015	2016	(Previous) 2017	Current 2018	Weekly 5 year average	% histo. Avg			% avg '13- '17 to 4 weeks ago	% 2018 to 4 weeks ago
17									267.71																			
18									210.44																			
19		200.00	210.00	174.00	121.00	167.89	140.00	110.00	153.26	143				174	110													
20		149.00	170.00	133.00	82.64	132.20	135.00	74.00	123.98	111	111			135	74													
21	170.00	98.00	172.36	133.00	82.64	126.00	161.00	92.74	85.48	119	72			161	83													
22	149.20	90.50	174.71	139.13	90.91	180.00	145.15	104.00	104.39	132	79			180	91													
23	121.66	90.00	150.02	141.67	92.48	145.00	102.20	105.00	97.24	117	83	-18	-37	145	92													
24	100.11	85.00	110.00	137.29	77.93	121.25	83.25	90.20	71.42	102	70	-8	-42	137	78													
25	77.62	77.63	90.00	122.09	81.09	91.90	83.25	70.00	74.95	90	84	-25	-12	122	70													
26	83.43	76.44	80.24	116.10	65.39	77.54	80.64	74.33	77.04	83	93	-37	-26	116	65													
27	83.69	63.65	72.67	98.08	64.38	70.57	87.85	72.30	84.96	79	108	-33	-13	98	64													
28	73.45	59.16	60.22	90.31	56.94	72.67	99.21	74.34	87.93	79	112	-23	23	99	57													
29	76.59	57.80	70.41	90.81	52.72	63.37	77.39	67.63	74.22	70	105	-22	-1	91	53													
30	70.02	52.02	72.10	88.20	51.60	65.80	75.39	65.32	77.76	69	112	-16	1	88	52													
31	67.99	52.58	73.79	87.67	51.59	66.88	74.25	63.62	74.31	69	108	-13	-13	88	52													
32	65.05	53.69	64.77	85.20	49.35	61.48	71.32	57.17	70.06	65	108	-18	-20	85	49													
33	63.19	45.63	55.73	81.36	51.56	63.56	69.53	61.17	85.67	65	131	-7	15	81	52													
34	62.78	47.07	70.99	80.39	46.71	67.15	69.25	61.61	75.70	65	116	-6	-3	80	47													
35	60.24	50.85	66.25	76.69	49.96	66.97	63.26	61.98	70.92	64	111	-7	-5	77	50													
36	60.95	49.38	66.98	75.31	55.56	69.77	72.16	63.23	74.61	67	111	4	6	75	56													
37	62.55	60.00	66.04	73.93	61.19	66.26	69.41	63.73	75.35	67	113	2	-12	74	61													
38	56.05	53.15	66.93	66.69	64.35	66.23	68.86	65.68	81.76	66	123	2	8	69	64													
39	53.92	57.76	69.14	61.85	65.83	66.01	67.34	65.83	68.32	65	105	3	-4	67	62													
40	49.87	67.56	68.22	55.45	65.80	55.29	63.40	63.23	69.68	61	115	-10	-7	66	55													
41	40.78	72.33	63.89	55.07	64.03	54.63	65.00	62.98	59.58	60	99	-10	-21	65	55													
42	40.41	72.00	65.95	56.69	69.00	50.62	64.00	64.30	79.79	61	131	-8	-2	69	51													
43	41.39	79.29	60.82	51.65	68.84	44.33	63.00	69.79	90.99	60	153	-9	33	70	44													
44	50.32		62.49	44.68	69.93	47.00	62.00	69.09	107.81	59	184	-3	55	70	45													
45				36.00					95.81	36	266	-40	61															
46				35.00																								
47																												
48																												
49																												

Source: AGRI-G2 (AMIS WEB) - extraction 25.04.2019, communications par les EM

Estimates are in Italics

SPAIN

FRANCE

Semaine	Italie													Weekly 5 year MAX	Weekly 5 year MIN
	2010	2011	2012	2013	2014	2015	2016	(Previous) 2017	Current 2018	Weekly 5 year average	% histo. Avg	% avg '13-'17 to 4 weeks ago	% 2018 to 4 weeks ago		
19															
20															
21															
22							168.33	77.08							
23						130.00	132.92	57.08	100.00						
24	130.71	90.03	193.33	115.27	106.67	103.75	104.58	51.25	93.75	96	97				
25	115.74	84.64	193.33	125.00	85.00	91.25	91.25	49.58	90.00	88	102				
26	100.76	80.00	132.50	104.58	70.83	78.33	80.00	53.75	82.50	77	106				
27	74.09	77.27	104.17	82.08	63.75	65.83	70.42	53.75	87.50	67	130		-13		
28	84.09	68.18	101.25	81.67	55.00	60.00	66.67	53.75	82.50	63	130	-34	-12		
29	77.73	60.91	78.75	78.33	55.00	55.00	65.00	53.75	78.75	61	128	-31	-13		
30	70.91	53.48	74.38	67.92	49.17	55.00	70.00	55.00	75.00	59	126	-23	-9		
31	55.15	50.65	70.00	66.94	45.00	55.00	70.00	55.00	75.00	58	128	-13	-14		
32	53.64	47.83	71.25	65.97	35.83	57.50	70.00	62.50	77.50	58	133	-8	-6		
33	57.00	45.00	69.17	65.00	33.75	60.00	70.00	62.50	77.50	58	133	-5	-2		
34	60.36	45.00	67.08	65.00	32.50	62.50	70.00	62.50	82.50	59	141	-2	10		
35	70.00	46.79	65.00	65.00	37.50	75.00	70.00	65.00	85.00	63	136	7	13		
36	40.00	60.45	61.25	65.00	65.00	75.00	70.00	75.00	95.00	70	136	20	23		
37	80.00	70.00	68.75	65.00	60.00	70.00	70.00	65.00	98.75	66	150	13	27		
38	70.00	77.73	62.50	65.00	60.00	70.00	70.00	63.77	95.05	66	145	12	15		
39			64.58	65.00	56.67	70.00	70.00	63.57	110.00	65	169	4	29		
40									80.00						
41															
42															
43															
44															
45															
46															
47															
48															
49															

Source: AGRI-G2 (AMIS WEB) - extraction 25.04.2019, communications par les EM

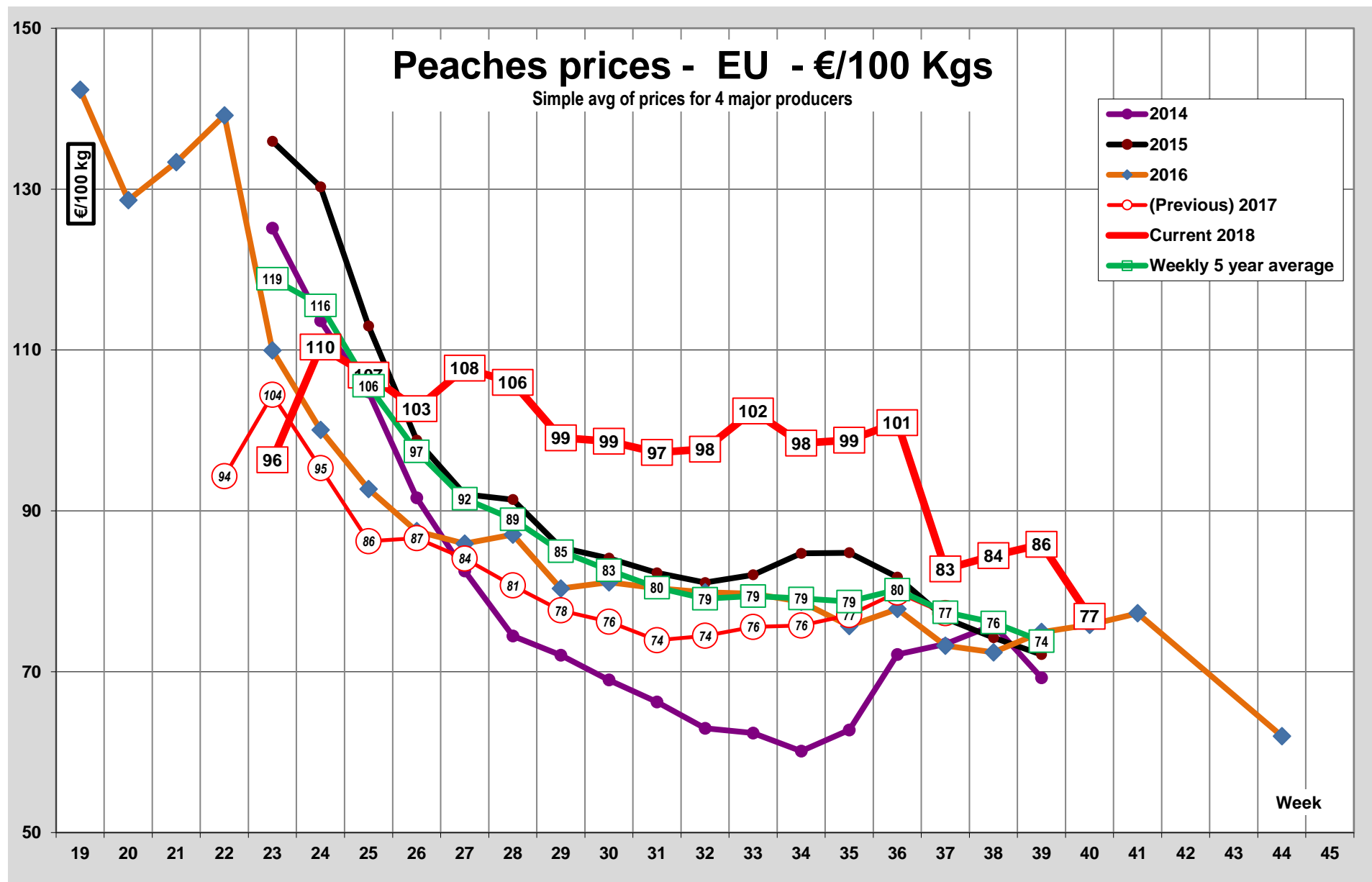
Estimates are in Italics

Tab 4.1 bis Prix à la production : PÊCHES (€/100kg) - à prix courants
Règlement d'exécution (UE) No 543/2011 de la Commission

Semaine	European Union - simple average of 4 Member States													Weekly 5 year MAX	Weekly 5 year MIN
	2010	2011	2012	2013	2014	2015	2016	(Previous) 2017	Current 2018	Weekly 5 year average	% histo. Avg	% avg '13-'17 to 4 weeks ago	% 2018 to 4 weeks ago		
19							142.35							136	104
20							128.62								
21							133.35								
22							139.17	94.29							
23		117.91			125.14	135.95	109.95	104.41	96.35	119	81				
24		101.69	137.47	138.47	113.62	130.28	100.06	95.30	110.37	116	96				
25		92.24	138.57	131.11	104.79	112.97	92.72	86.22	106.88	106	101				
26		87.76	116.94	122.53	91.63	98.78	87.47	86.61	102.70	97	105				
27		83.07	103.58	113.00	82.54	92.07	85.93	84.06	107.75	92	118	-23	12		
28		78.63	98.52	111.16	74.45	91.40	87.05	80.72	105.97	89	119	-23	-4		
29		75.04	95.19	109.46	72.06	85.47	80.34	77.61	99.08	85	117	-19	-7		
30		70.80	92.59	102.72	68.97	84.11	81.11	76.21	98.66	83	119	-15	-4		
31		69.49	89.98	99.48	66.24	82.29	80.37	73.91	97.27	80	121	-12	-10		
32		68.72	87.34	97.03	62.96	81.09	79.87	74.46	97.67	79	124	-11	-8		
33		66.62	85.65	97.36	62.37	82.04	79.71	75.57	102.42	79	129	-7	3		
34		67.95	89.87	96.25	60.12	84.73	78.70	75.75	98.43	79	124	-4	0		
35		76.16	88.06	93.39	62.75	84.79	75.68	77.04	98.79	79	125	-2	2		
36		77.60	87.65	89.54	72.13	81.75	77.79	79.83	100.97	80	126	1	3		
37		82.78	89.71	86.39	73.45	76.63	73.24	77.26	82.78	77	107	-3	-19		
38		83.73	88.39	82.06	75.79	74.24	72.42		84.44	76	111	-4	-14		
39			77.76	78.91	69.26	72.12	74.93		85.84	74	116	-6	-13		
40							75.83		76.89				-24		
41							77.26								
42															
43															
44							62.00								
45															
46															
47															
48															
49															

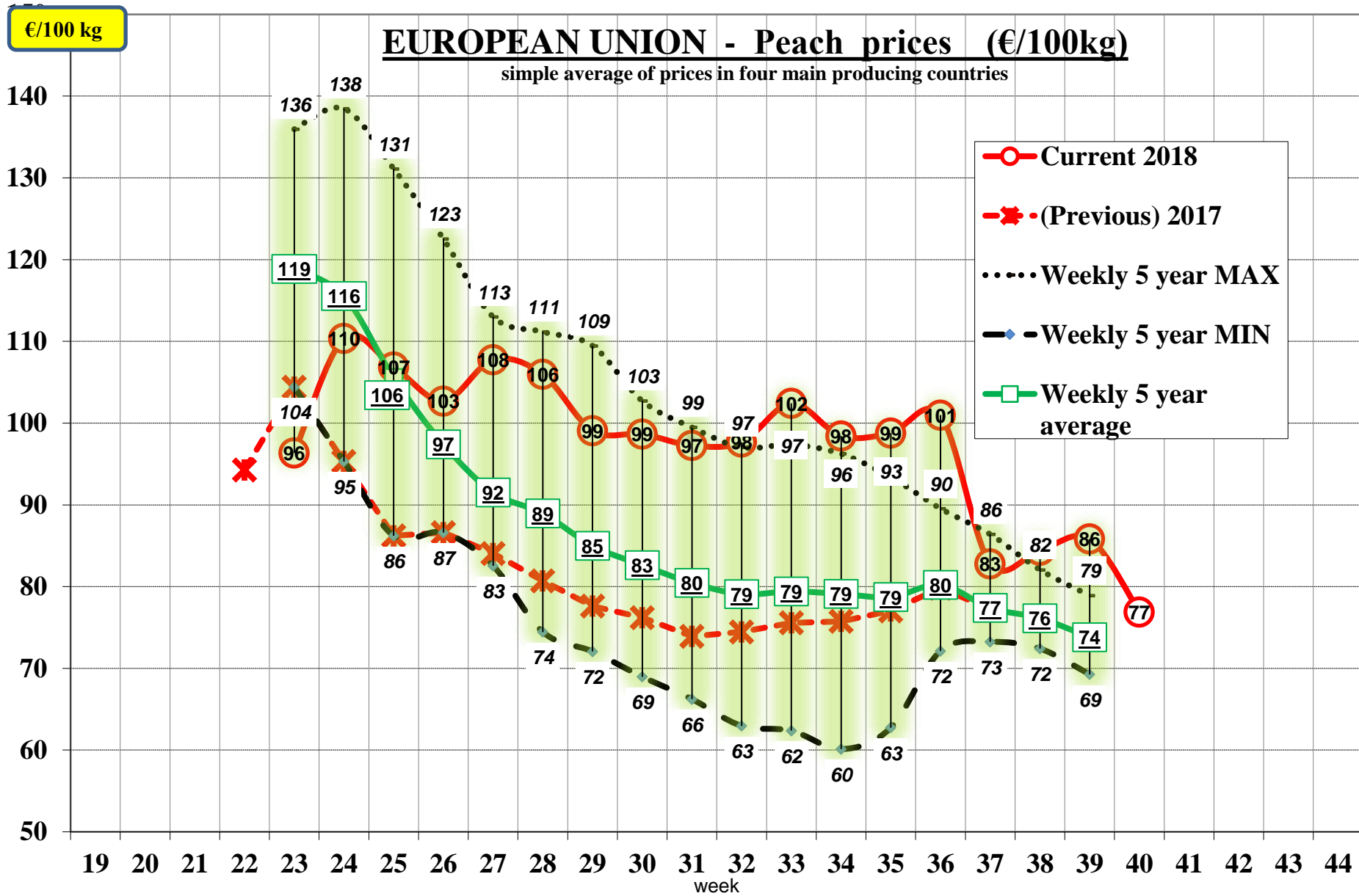
Source: AGRI-G2 (AMIS WEB) - extraction 25.04.2019, communications par les EM

Graph 4.0

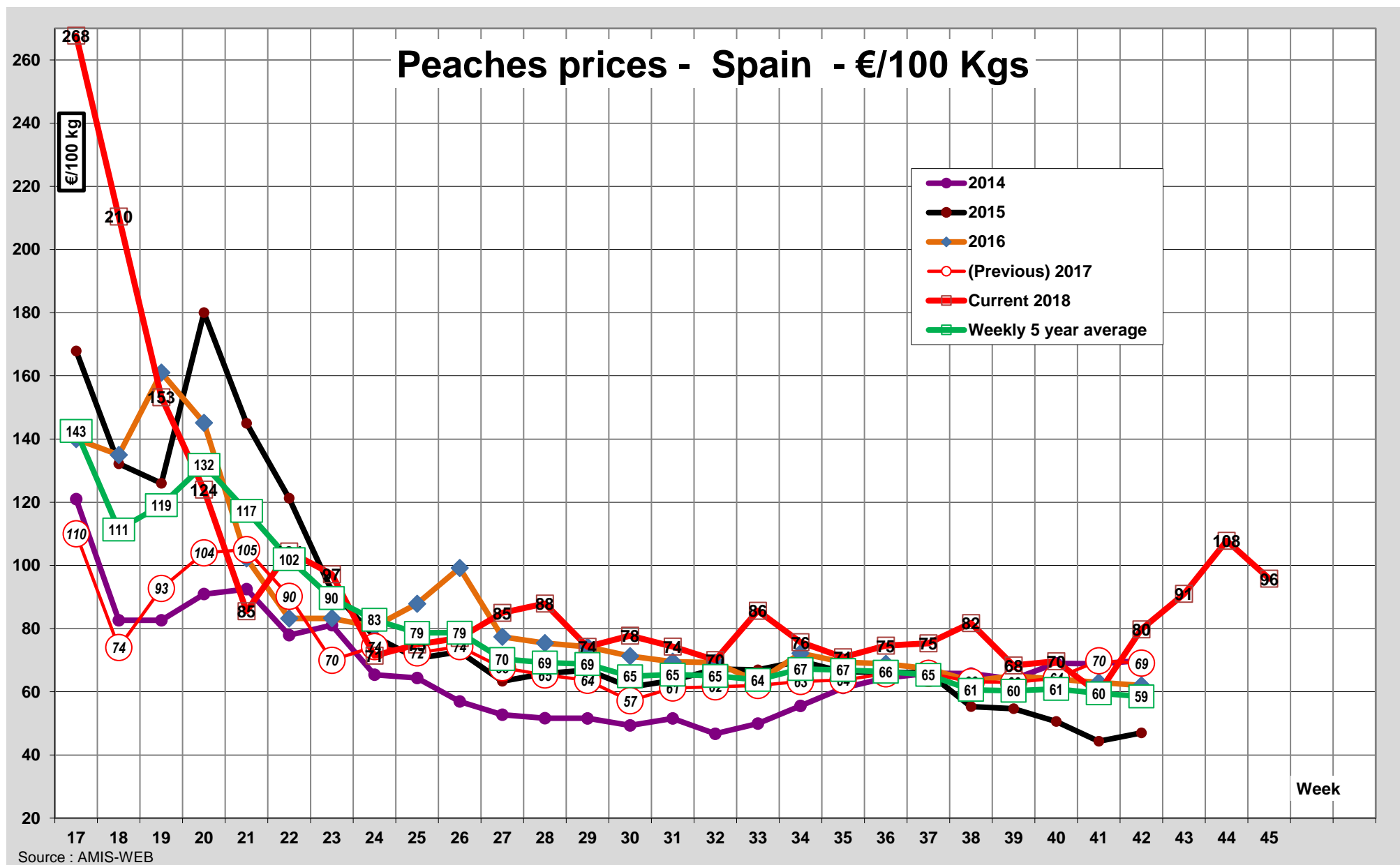


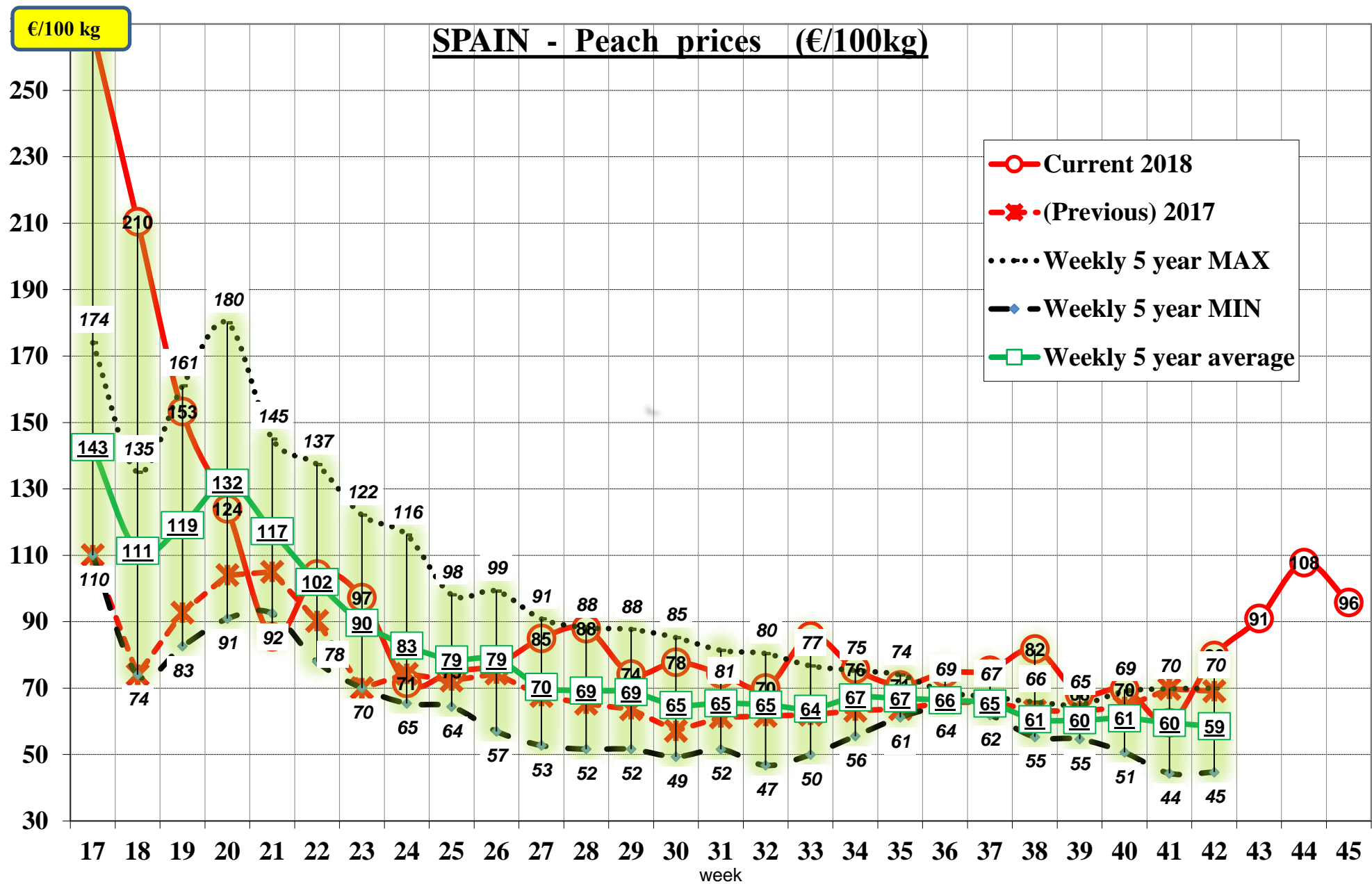
Source : AMIS-WEB

Graph 4.0

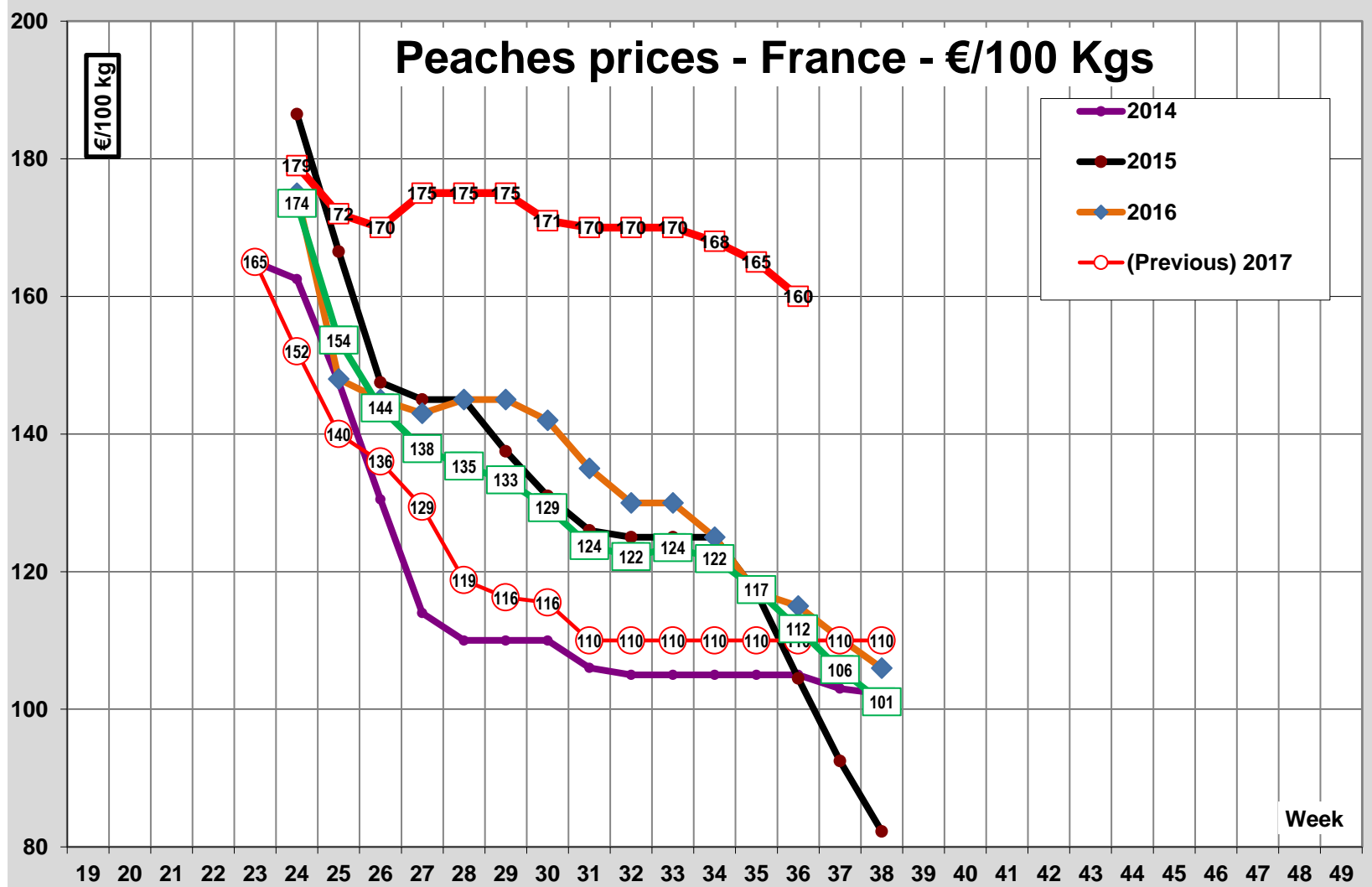


Graph 4.1



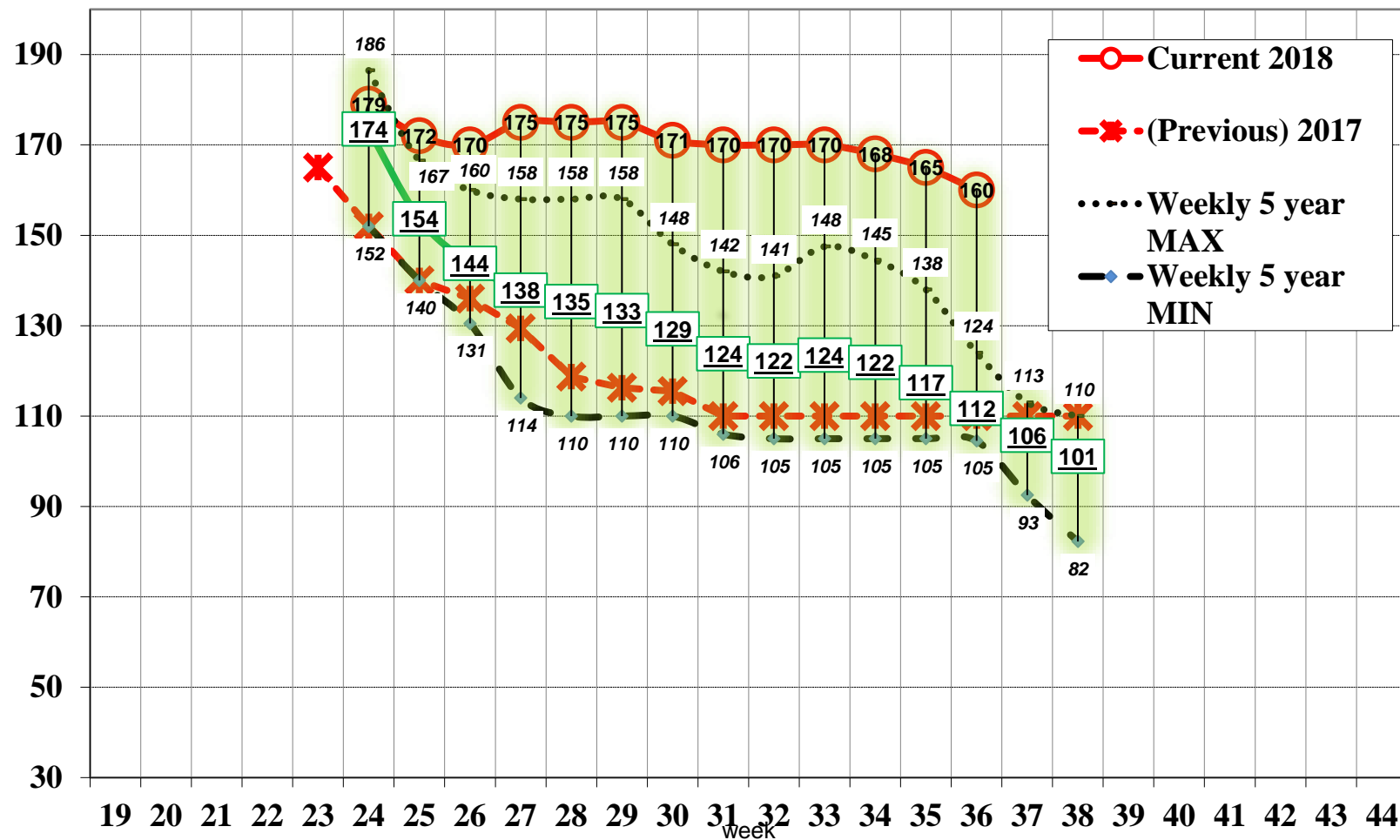


Graph 4.2

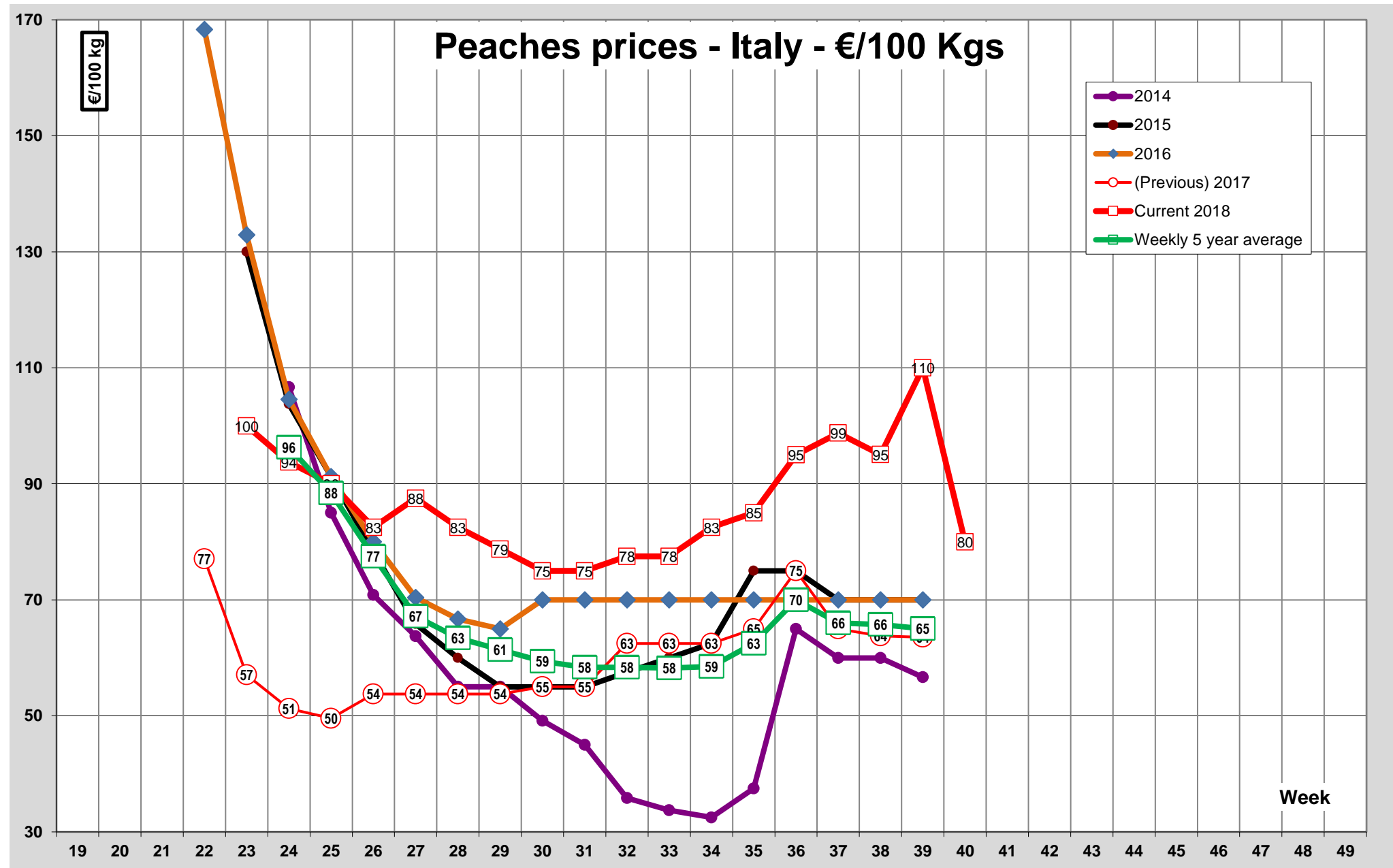


€/100

FRANCE - Peach prices (€/100kg)



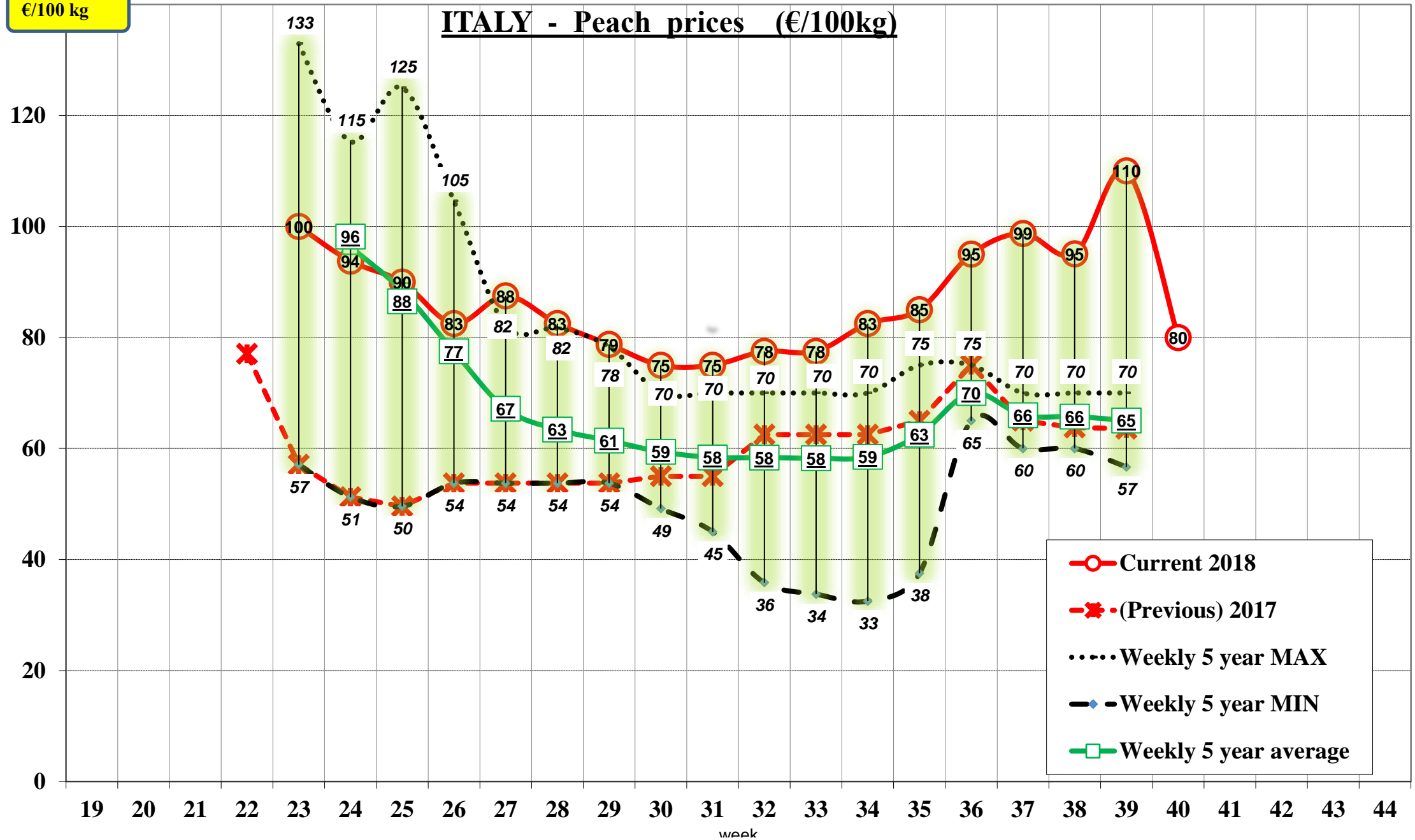
Graph 4.3



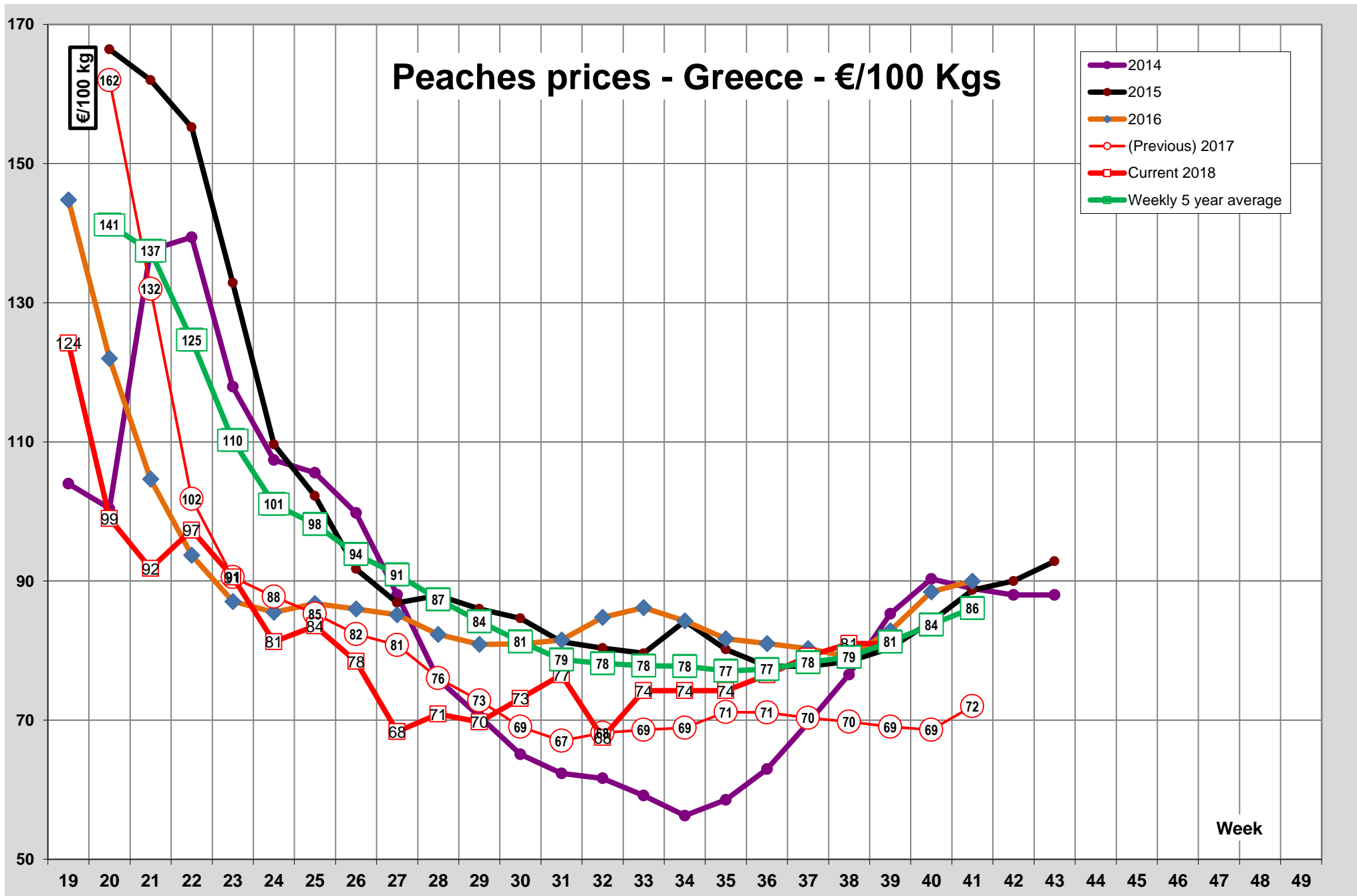
Source : AMIS-WEB

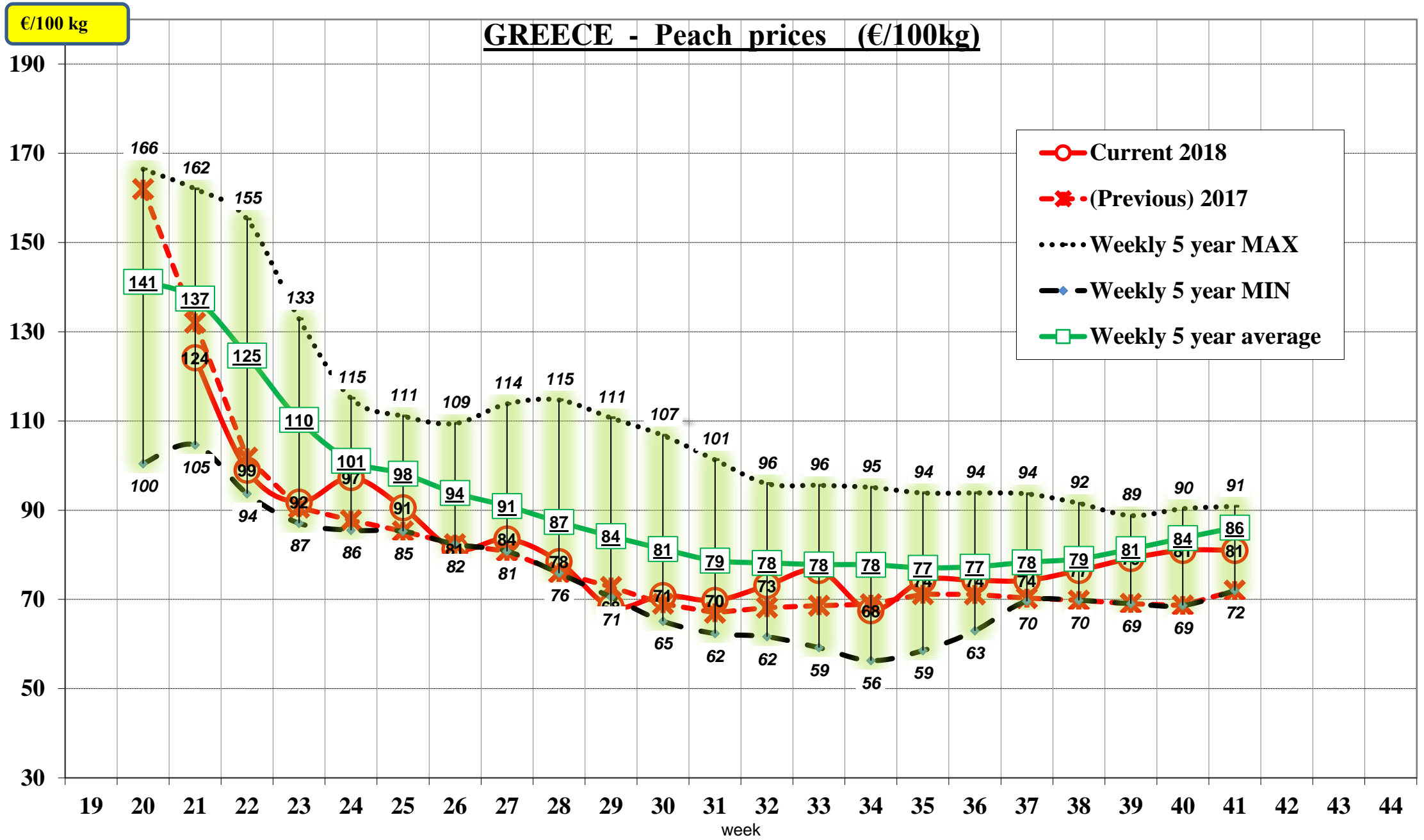
€/100 kg

ITALY - Peach prices (€/100kg)



Graph 4.4





Tab 4.2 Prix à la production : NECTARINES (€/100kg) - à prix courants
Règlement d'exécution (UE) No 543/2011 de la Commission

[illegible]

Source: AGRI-G2 (AMIS WEB) - extraction 25.04.2019 , communications par les EM

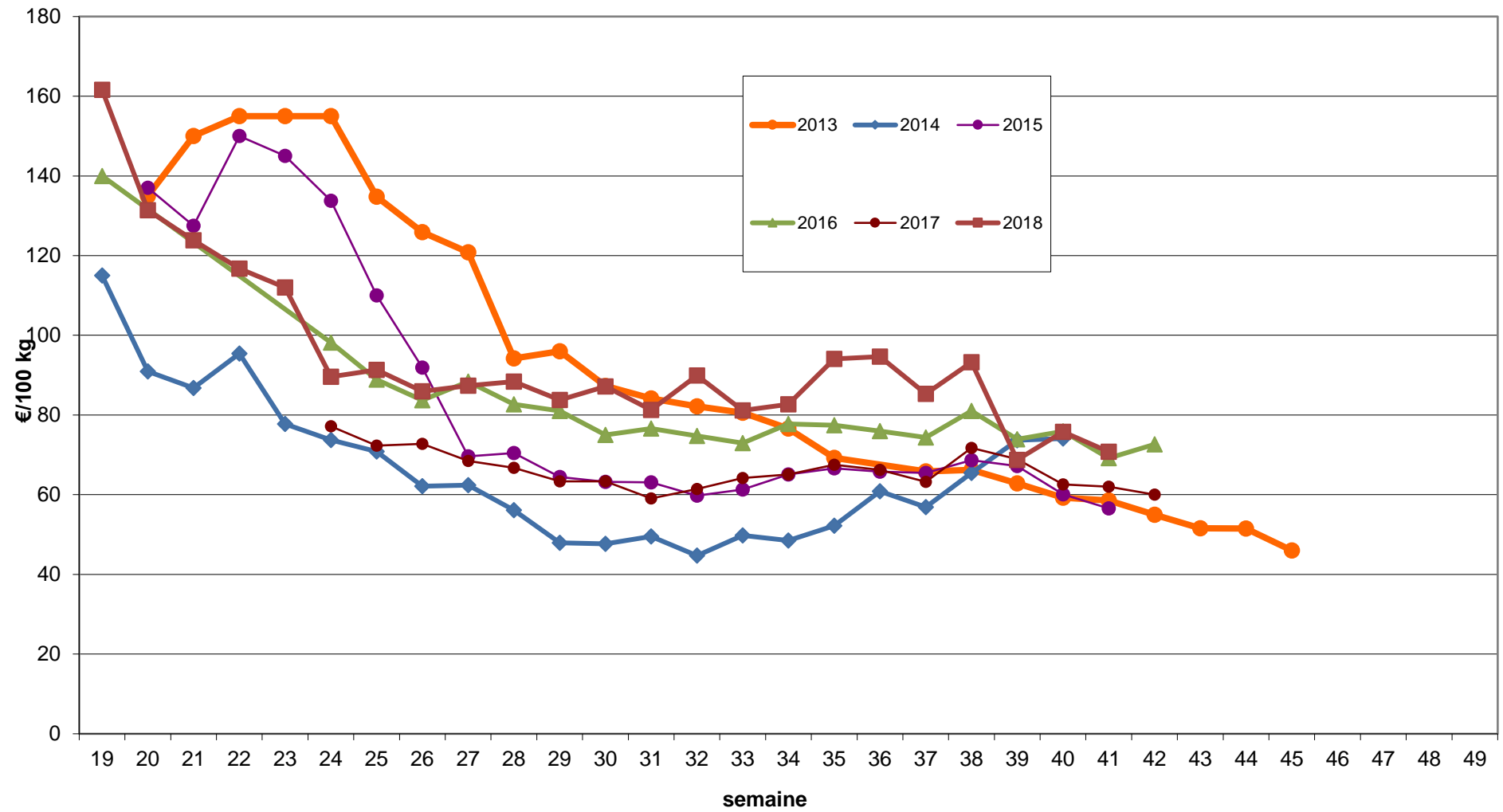
France													
2005	2006	2007	2008	2009	2010	2011	2012	2013	2014	2015	2016	2017	2018
			183.50										
			185.93	150.00		163.75			200.00			176.88	
	178.68		181.30	145.00		152.50	190.00		175.00			162.00	200.00
	177.43	137.10	169.60	136.70	168.25	127.50	170.00		150.50	172.50	191.25	150.00	182.00
72.25	149.85	112.00	160.90	131.40	155.50	115.00	146.00	177.50	136.50	157.00	156.00	146.00	175.00
65.50	147.25	104.13	150.50	129.10	146.00	113.00	140.00	175.00	123.50	150.00	150.00	139.40	180.00
58.67	146.50	96.40	147.50	125.63	140.00	110.00	140.00	170.00	117.50	150.00	148.00	128.75	185.00
54.00		96.10	134.38	108.10	126.67	105.00	128.60	165.00	116.88	142.50	150.00	125.00	183.00
49.65	145.93	96.25	127.70	97.90	133.50	105.00	120.00	155.00	115.00	136.00	150.00	122.00	180.00
22.70	147.38	103.00	129.70	85.20	110.00	105.00	120.00	150.00	115.00	132.00	143.00	120.00	180.00
22.15	140.17	108.90	133.20	96.00	111.50	105.00	120.00	150.00	115.00	130.00	140.00	120.00	180.00
21.69	139.21	118.50	133.00	93.40	106.80	105.00	120.60	152.50	115.00	130.00	135.00	120.00	180.00
20.90	125.30	120.00	130.80	93.00	98.40	105.60	123.00	150.00	115.00	130.00	140.00	118.75	177.00
19.60	103.13	120.40	131.00	93.00	91.60	106.00	124.60	143.00	115.00	126.00	135.00	115.00	170.00
20.00	94.47	120.50	131.00	93.50	86.00	106.00	125.00	131.00	115.00	118.00	123.00	115.00	167.00
		120.50	128.70	93.50	84.00			123.00		103.00	120.00		
			125.00		80.00			110.00					
								100.00					

[illegible]

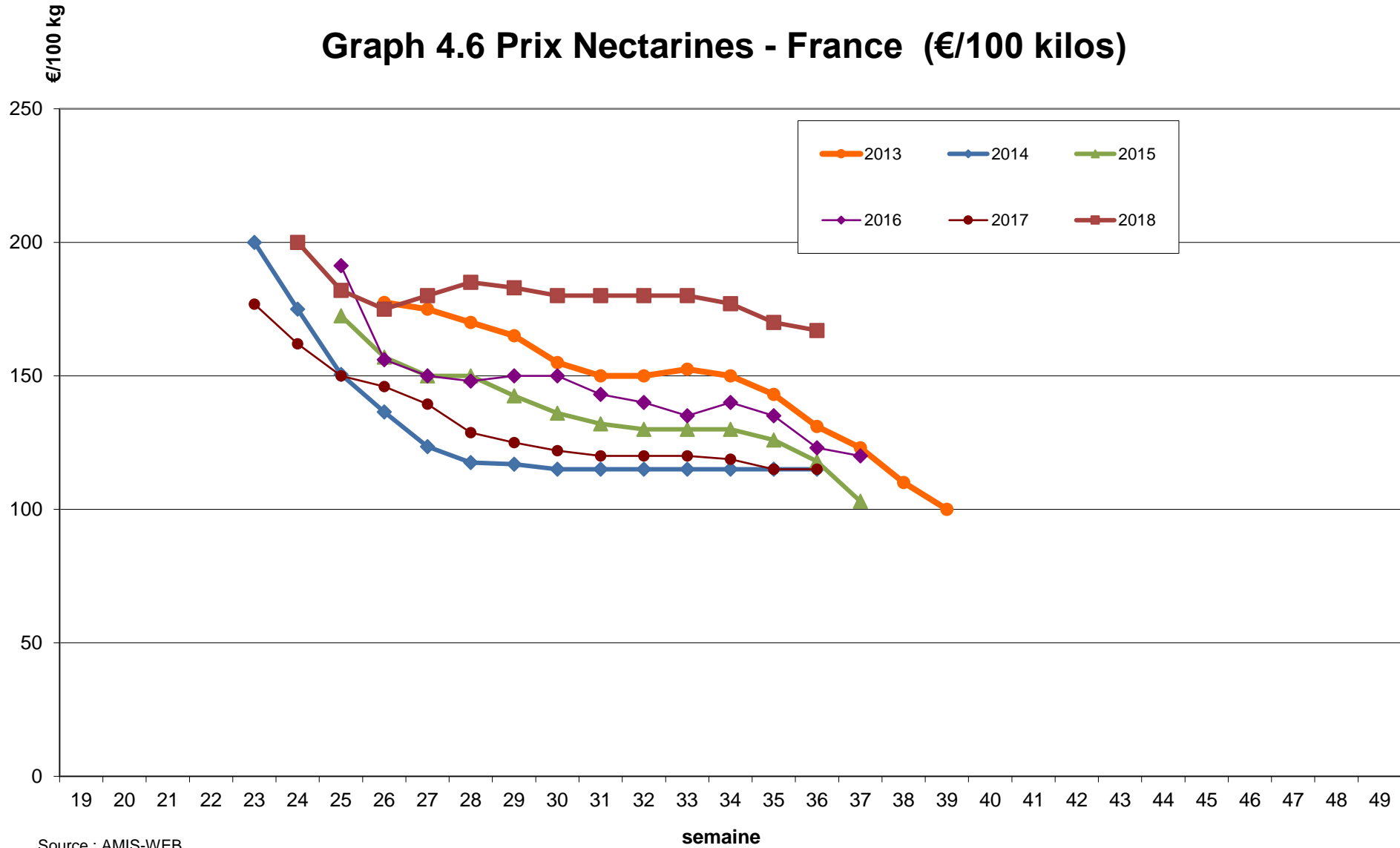
Source: AGRI-G2 (AMIS WEB) - extraction 25.04.2019 , communications par les EM

Grèce													
2005	2006	2007	2008	2009	2010	2011	2012	2013	2014	2015	2016	2017	2018
									176.00		158.00		
									173.14		122.29	162.00	
									134.00	162.00	120.86	158.43	158.40
								162.00	129.86	152.36	117.07	134.86	144.00
						163.75	97.00	152.00	108.36	146.36	108.86	109.93	113.40
77.50		40.00				122.97	95.57	120.86	103.14	128.36	102.00	88.86	92.25
76.07		40.00	70.00				95.00	106.07	94.25	110.43	96.07	84.07	93.66
66.43		40.00	68.57				99.00	107.00	81.11	93.14	98.61	83.43	80.70
55.05		40.00	73.21				95.79	106.21	78.68	86.21	97.39	83.18	86.63
48.71		45.71	77.50				94.86	104.79	75.14	93.54	90.18	78.43	85.78
45.35		55.71	70.36				94.50	104.14	68.14	95.50	89.36	75.79	91.69
44.51		60.00	75.36				94.86	100.07	63.50	95.54	91.61	79.61	90.00
46.61		65.71	77.50				91.43	92.43	64.11	92.71	92.25	80.89	78.76
49.07		70.00	78.93				90.00	84.29	63.86	90.61	91.71	72.18	85.50
47.50		70.00	80.00				88.57	81.29	62.79	86.50	92.21	69.75	85.50
50.93		70.00	80.00				83.71	81.00	65.00	78.57	91.79	70.60	83.25
50.55		87.14	80.00			78.57	81.29	81.00	70.11	81.54	89.71	70.88	84.94
41.14		100.00	81.90			73.78	81.00	81.00	76.21	85.00	87.39	74.48	86.07
43.71		100.00	90.00			73.18	78.50	81.00	81.93	85.50	87.64	75.38	89.44
45.00		100.00	90.00			75.86	79.29	81.00	85.64	86.75	89.61	76.65	92.25
						79.78	80.71	78.50	89.89	89.57	90.96	72.00	85.50
						95.49	81.00	76.79	92.86	90.68	91.96	76.50	85.50
						97.43	81.00	76.50	89.57	87.00	90.64	76.50	85.50
						97.71		56.86	77.00	85.50	90.00		
						97.71		49.00	77.00				

Graph 4.5 Prix Nectarines - Espagne (€/100 kilos)

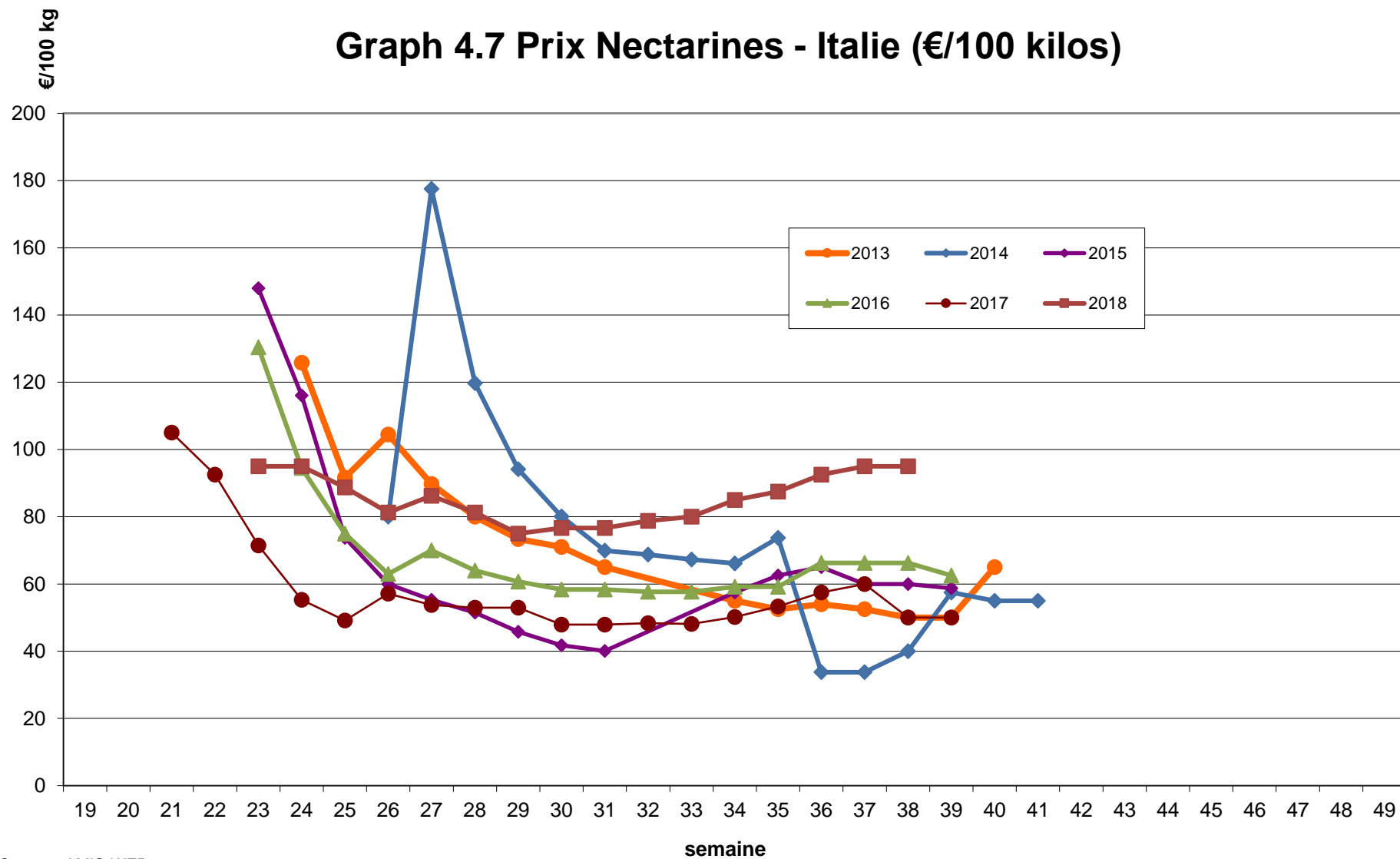


Graph 4.6 Prix Nectarines - France (€/100 kilos)



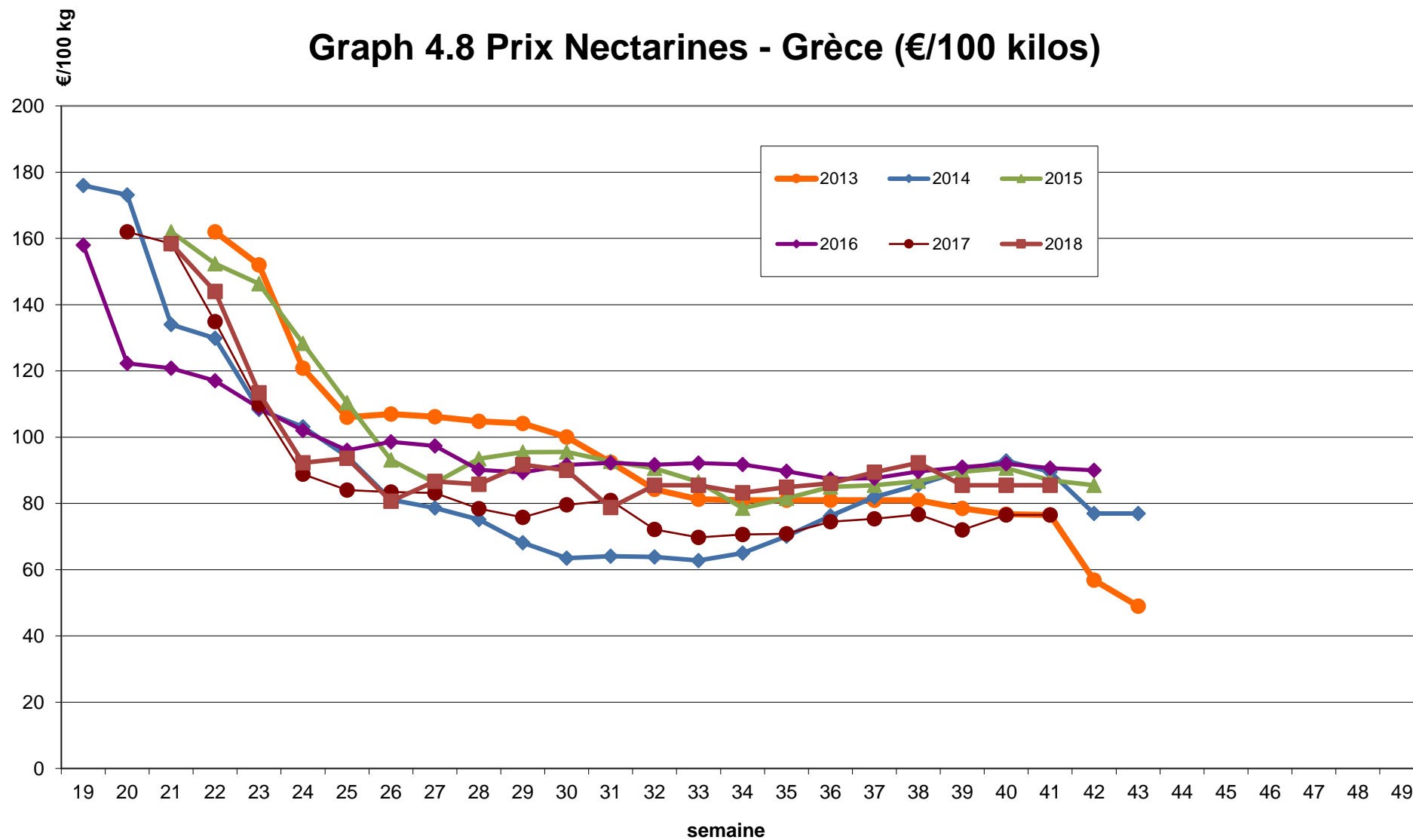
Source : AMIS-WEB

Graph 4.7 Prix Nectarines - Italie (€/100 kilos)



Source : AMIS-WEB

Graph 4.8 Prix Nectarines - Grèce (€/100 kilos)



Source : AMIS-WEB

Tab 4.3 Prix à la production: ABRICOTS (€/100 kilos) - à prix courants

Règlement d'exécution (UE) No 543/2011 de la Commission

Sem	Espagne													
	2005	2006	2007	2008	2009	2010	2011	2012	2013	2014	2015	2016	2017	2018
18				145			250	255		350			203.52	299.52
19			160.00	153.79	170.87		150.00	220.00		225.00		294.00	126.98	137.15
20	125.00	125.00	157.41	161.00	132.05	180.00	150.87	180.00		185.95	196.20	259.92	101.09	112.39
21	175.00	75.51	135.00	160.00	116.82	181.71	125.00	173.70	285.00	144.63	220.31	160.44	98.62	97.90
22	104.51	79.24	127.62	143.68	95.20	156.29	100.00	95.00	234.00	127.27	183.52	148.38	102.70	75.40
23	90.85	82.59	137.27	136.25	85.08	108.00	101.44	98.00	217.50	95.45	173.01	128.28	79.00	69.01
24	89.24	84.81	139.75	116.52	87.24	105.00	100.00	83.00	237.50	105.00	131.40	117.50	76.20	75.32
25	82.61	86.69	120.94	97.56	81.04	105.16	95.00	80.00	150.00	105.00	92.93	100.38	89.00	72.06
26	75.47	80.74	116.65	99.50	70.00	105.74	85.00	85.00	150.00	105.00	92.53	101.70	88.00	72.88
27	68.08	69.83		95.89	70.00	107.15		85.00	110.00		60.00	102.70		79.13
28	64.84	75.00	121.01	90.00		125.00			110.00			112.00	89.70	85.99
29				100.00		83.00						124.00	74.48	70.88
30						80.00						120.00		72.84
31													65.62	76.19
32								95.87						76.64
33								102.94						130.58
34														
35														
36														

Source: AGRI-G2 (AMIS WEB) - extraction 25.04.2019, communications par les EM

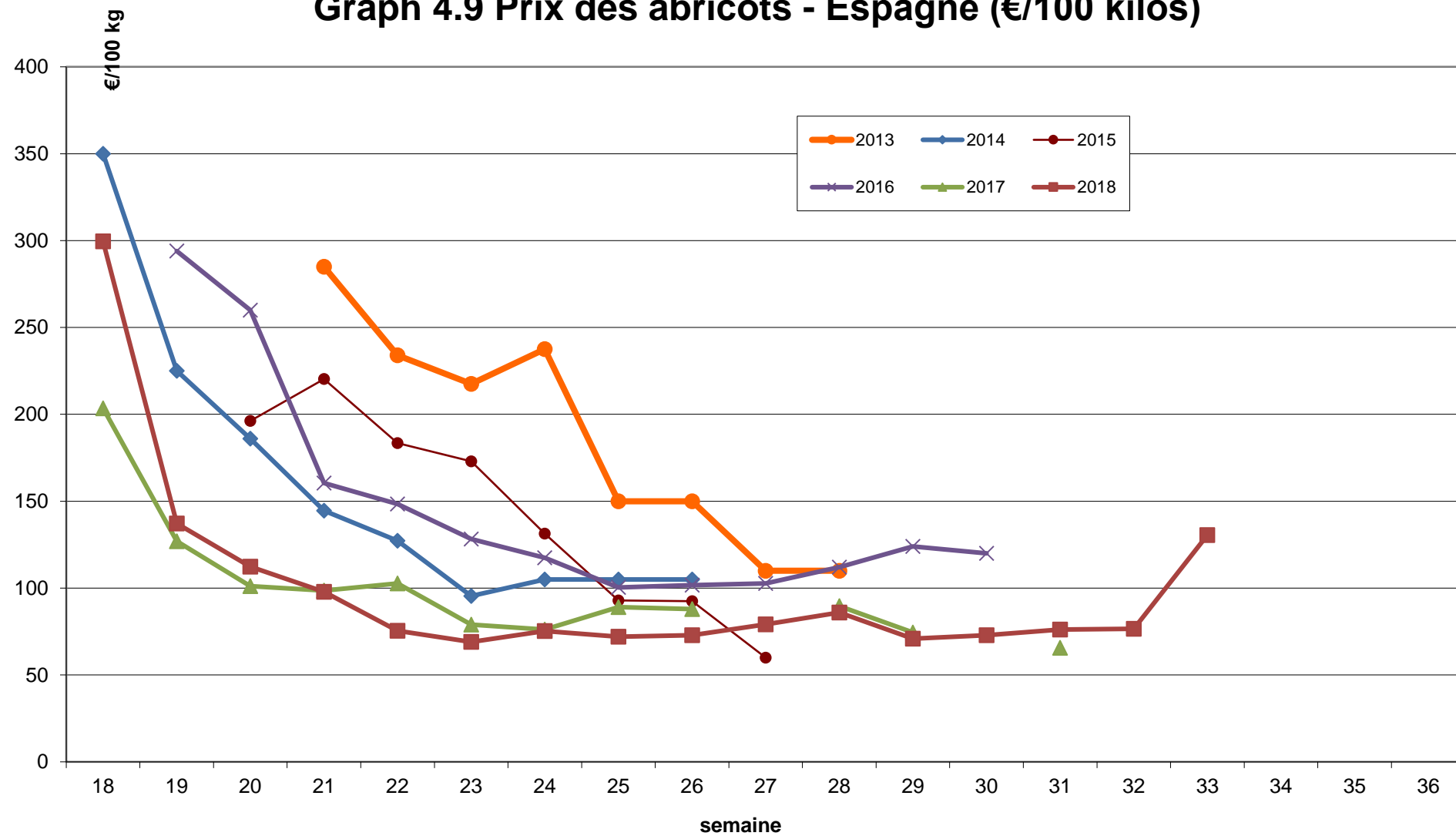
France													
2005	2006	2007	2008	2009	2010	2011	2012	2013	2014	2015	2016	2017	2018
									275.00			220.00	
						236.67	325.00		250.00	280.00		169.00	271.25
						194.00	260.00		234.00	252.00	272.00	162.50	248.00
	148.27				197.50	170.00	180.00	350.00	192.50	230.00	245.00	146.00	208.50
	142.00	169.00		118.00	174.00		160.00	350.00	161.00	218.00	237.00	140.00	177.00
105.00	128.49	156.00			180.00	167.50	155.00	298.00	150.00	202.00	216.00	139.00	170.00
96.00	125.20	188.75		131.67		160.00	148.00	234.00	145.00	208.00	199.00	135.00	161.50
102.33	132.11	185.00	280.00	121.25	185.00	155.00	170.00	212.00	140.00	195.00	200.00	135.00	181.00
112.40		189.00	262.50	115.00	178.33	155.00	165.00	198.00	137.50	175.00	205.00	128.75	184.50
111.50	133.80	190.00	240.00	124.00	170.00	155.00	161.00	190.00	135.00	166.00	216.00	132.00	176.00
39.60	138.75	213.33	214.00	139.00	170.00	156.00	160.00	207.00	135.00	162.00	220.00	135.00	173.00
42.50	138.67	247.00	212.00	161.00	180.00	159.00	160.00	197.00	137.00	170.00	202.00		178.33
50.00	141.08		212.50		184.00	155.00	157.00	192.00	145.00	175.00	200.00		
	143.83		216.00					190.00			205.00		
								190.00			200.00		

Sem	Italie													
	2005	2006	2007	2008	2009	2010	2011	2012	2013	2014	2015	2016	2017	2018
18														
19														
20														175.00
21														
22							163.33		230.83				75.83	
23					125.83		148.33	184.25	179.17			160.00	65.00	113.33
24	106.92		83.33	75.00	112.50	115.00	126.67	143.33	137.50	93.33	118.33	135.83	65.00	100.00
25	80.42		70.00	75.00	111.67		123.33	107.92	142.08	123.33	93.75	124.17	63.33	91.67
26	66.88	90.00				70.00	118.75	96.25	139.17	100.83	79.17	113.33	60.00	81.67
27	52.71	81.88	63.33	45.00		60.00	114.58	104.17	139.17	88.75	73.33	103.33	61.25	90.00
28	44.04	86.50	63.33	40.00	100.00	92.50	105.00	97.50	138.33	87.50	78.75	91.67	66.25	95.00
29	56.67	81.75		85.83		97.50	112.50		173.75	95.00	78.75	90.00	71.25	96.67
30	65.21	74.17		95.00			151.67		80.00	98.13	81.25	95.00	71.25	120.00
31		97.29								105.00	125.00	120.00	92.50	120.00
32												120.00	92.50	145.00
33													92.50	145.00
34													92.50	145.00
35														80.00
36														

Source: AGRI-G2 (AMIS WEB) - extraction 25.04.2019, communications par les EM

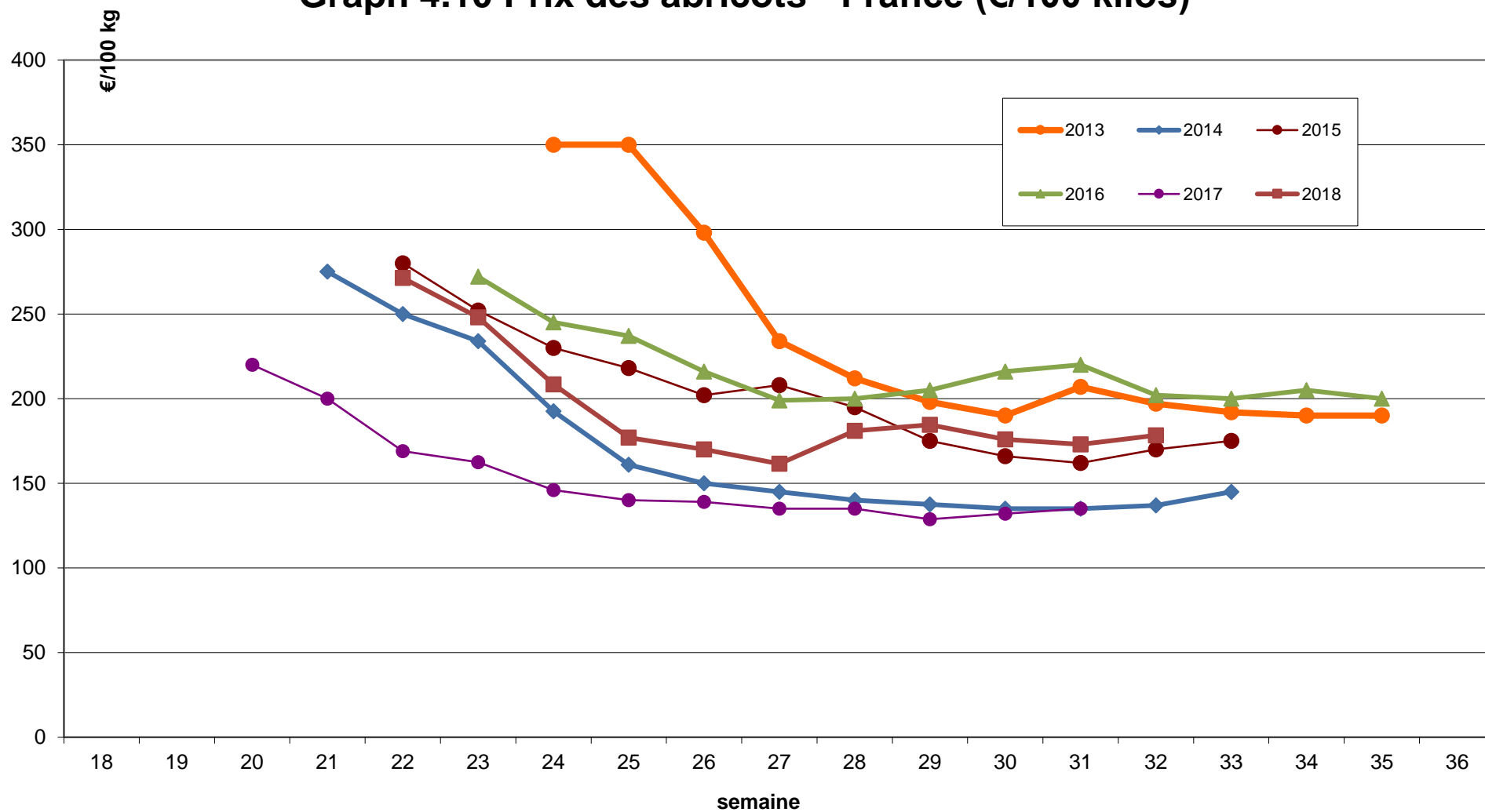
Grèce													
2005	2006	2007	2008	2009	2010	2011	2012	2013	2014	2015	2016	2017	2018
								270				268	
								218.57	126.00		224.00	213.00	238.95
							152.00	164.43	136.00	229.50	189.71	136.71	136.80
							127.00	138.14	160.00	203.07	152.43	101.07	94.39
							112.36	120.14	149.07	160.36	125.14	80.50	84.10
							104.07	104.29	125.79	146.79	106.93	72.00	85.50
							94.71	93.21	102.36	134.36	83.21	65.64	74.25
							92.00	84.43	94.07	110.93	73.36	61.71	69.19
40.00	60.00						76.50	70.64	88.14	99.57	73.93	62.79	64.13
38.86	57.14						77.21	79.79	84.21	84.07	79.86	64.21	83.14
38.00	55.00						80.00	90.43	81.71	80.29	84.50	66.64	96.19
36.29							74.79	85.21	88.14	81.71	90.14	69.29	103.50
35.00							82.36	50.71	95.29	84.50	97.00	65.00	90.00
35.00							85.50	38.00	98.43	85.50	99.00	63.00	108.00
									99.00	88.71	101.14	63.00	123.75
										90.00	102.00	63.00	90.00
										90.00			

Graph 4.9 Prix des abricots - Espagne (€/100 kilos)



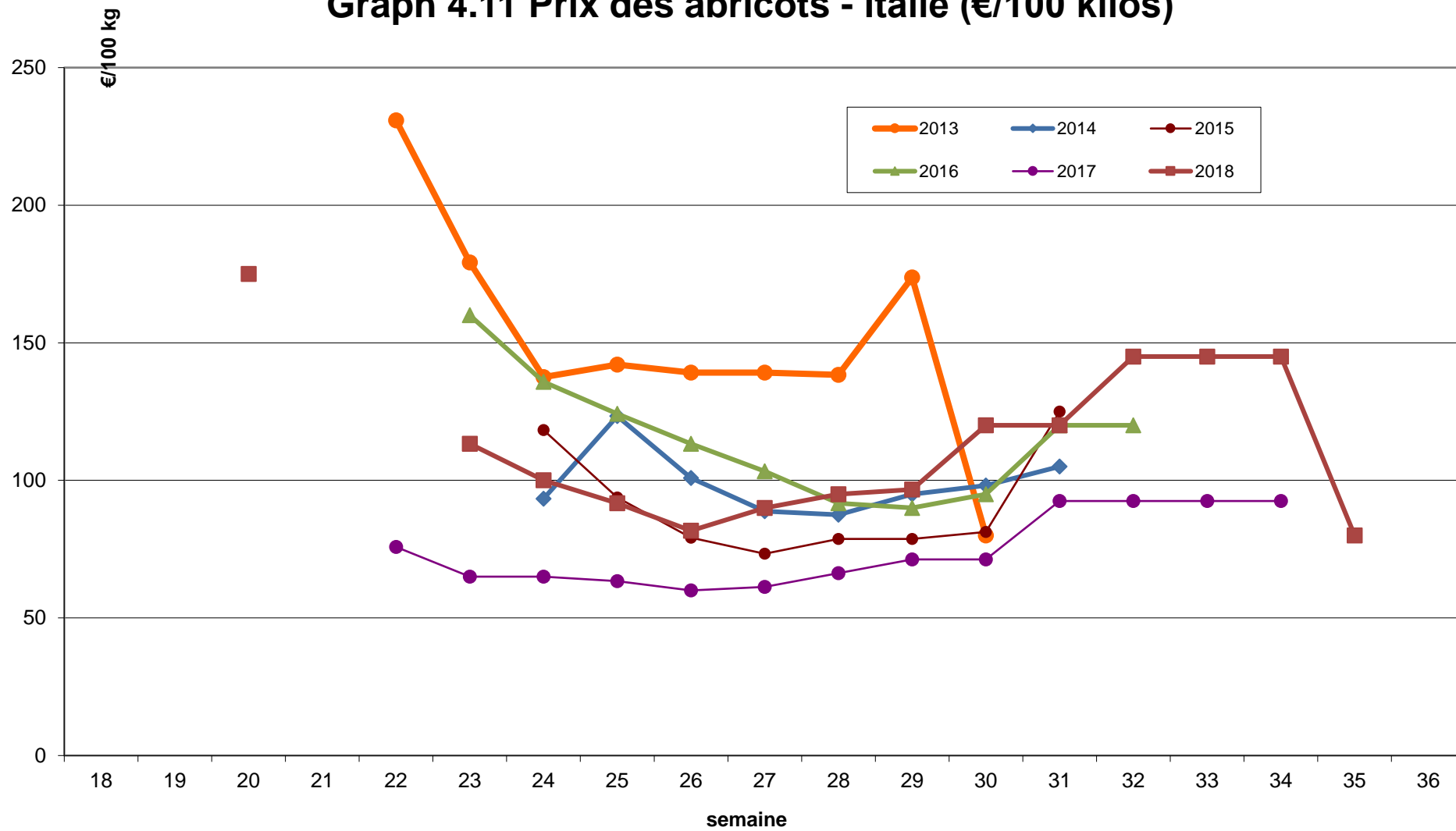
Source : AMIS-WEB

Graph 4.10 Prix des abricots - France (€/100 kilos)



Source : AMIS-WEB

Graph 4.11 Prix des abricots - Italie (€/100 kilos)



Source : AMIS-WEB

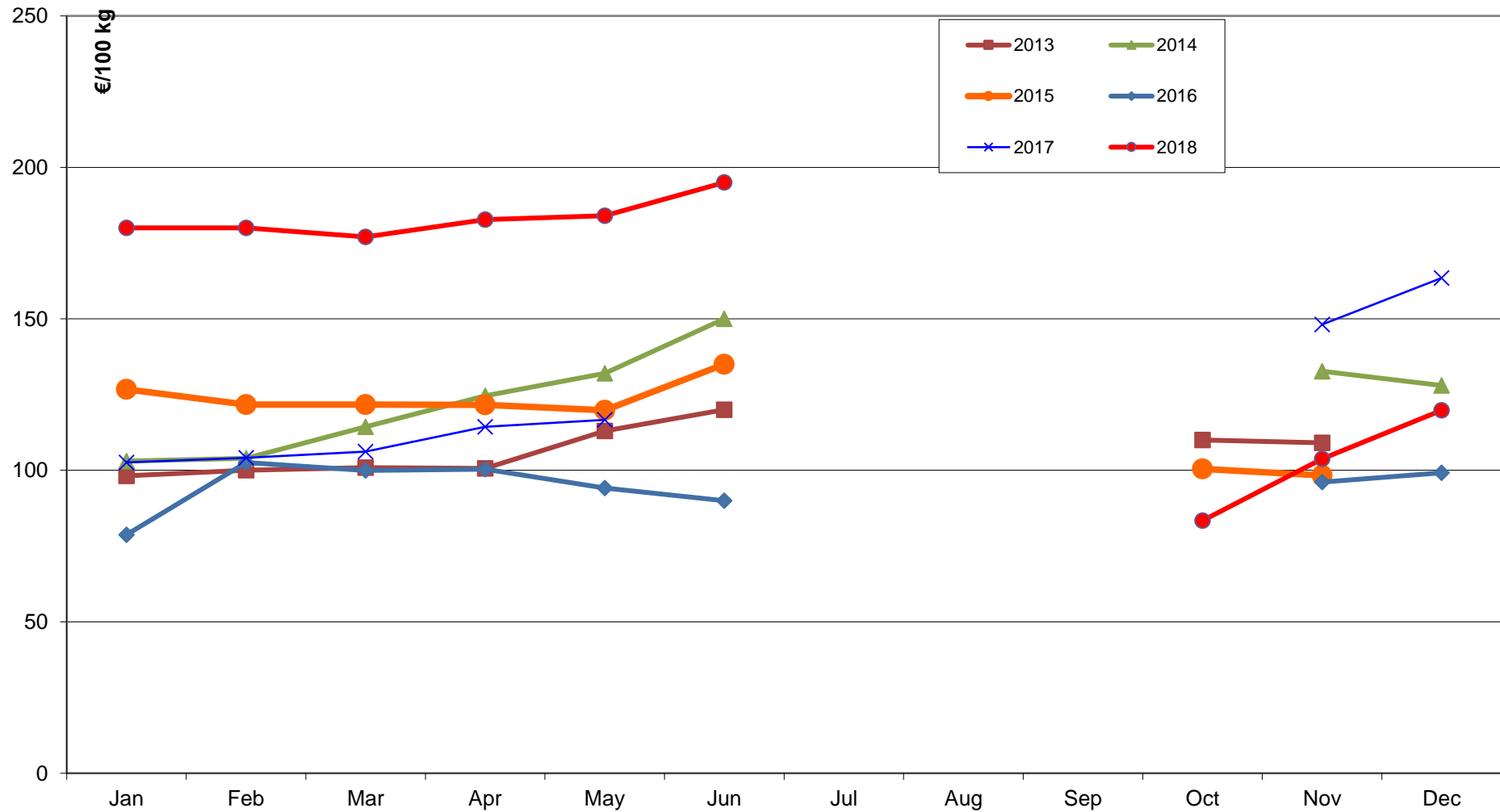
TABLEAU 4.4 : PRIX A LA PRODUCTION : KIWIS (€/100kg) - à prix courant

Règlement d'exécution (UE) No 543/2011 de la Commission

Mois	Italie													Portugal												
	2006	2007	2008	2009	2010	2011	2012	2013	2014	2015	2016	2017	2018	2006	2007	2008	2009	2010	2011	2012	2013	2014	2015	2016	2017	2018
Jan	87.14	87.28	105.00	104.00	76.67	96.16	89.63	98.17	103.05	126.75	78.74	102.62	180.00	115.00	109.00	123.00	106.00	90.00	100.00	98.33	90.00	120.00	135.00	95.00	95.00	145.00
Feb	89.70	91.16	111.90	104.70	79.44	97.96	91.15	100.06	103.97	121.67	102.57	104.08	180.00	107.00	102.00	130.00	100.00	80.00	100.00	99.00	98.00	120.00	135.00	95.00	95.00	145.00
Mar	97.98	91.95	124.39	102.78	85.97	99.31	88.85	100.86	114.40	121.67	99.93	106.17	177.08	123.13	100.00	139.00	104.50	82.00	107.50	105.00	110.00	120.00	135.00	95.00	95.00	145.00
Apr	113.55	101.89	142.17	106.95	91.00	108.39	89.31	100.61	124.55	121.60	100.41	114.40	182.78	126.25	102.00	138.33	115.00	96.00	115.00	105.00	115.00	124.00	135.00	95.00	95.00	145.00
May	126.72	106.96	189.92	118.88	98.71	120.29	91.26	113.00	131.98	119.80	94.16	116.67	184.00	117.00	111.00		115.00	110.00	120.00	105.00	122.00	125.00	135.00	95.00	95.00	145.00
Jun	139.17			120.00	100.00		102.50	120.00	150.00	135.00	90.00		195.00	120.00	115.00					105.00	125.00	125.00	135.00	95.00	102.00	145.00
Jul																				105.00		125.00	135.00	98.00	130.00	145.00
Aug																						135.00	135.00	98.75		
Sep																						135.00				145.00
Oct	95.00	99.00				90.00		110.00		100.42			83.38								120.00	135.00				
Nov	83.46	110.48	124.58	77.00		86.06	95.00	109.10	132.71	98.32	96.07	148.13	103.77		120.00		80.00	100.00		90.00	120.00	135.00	95.50	95.00	145.00	113.33
Dec	89.01	103.79	105.38	75.00		86.03	95.79		128.04		99.17	163.50	119.83	116.25	120.00	113.75	85.00	100.00	100.00	90.00		135.00		95.00	145.00	115.00

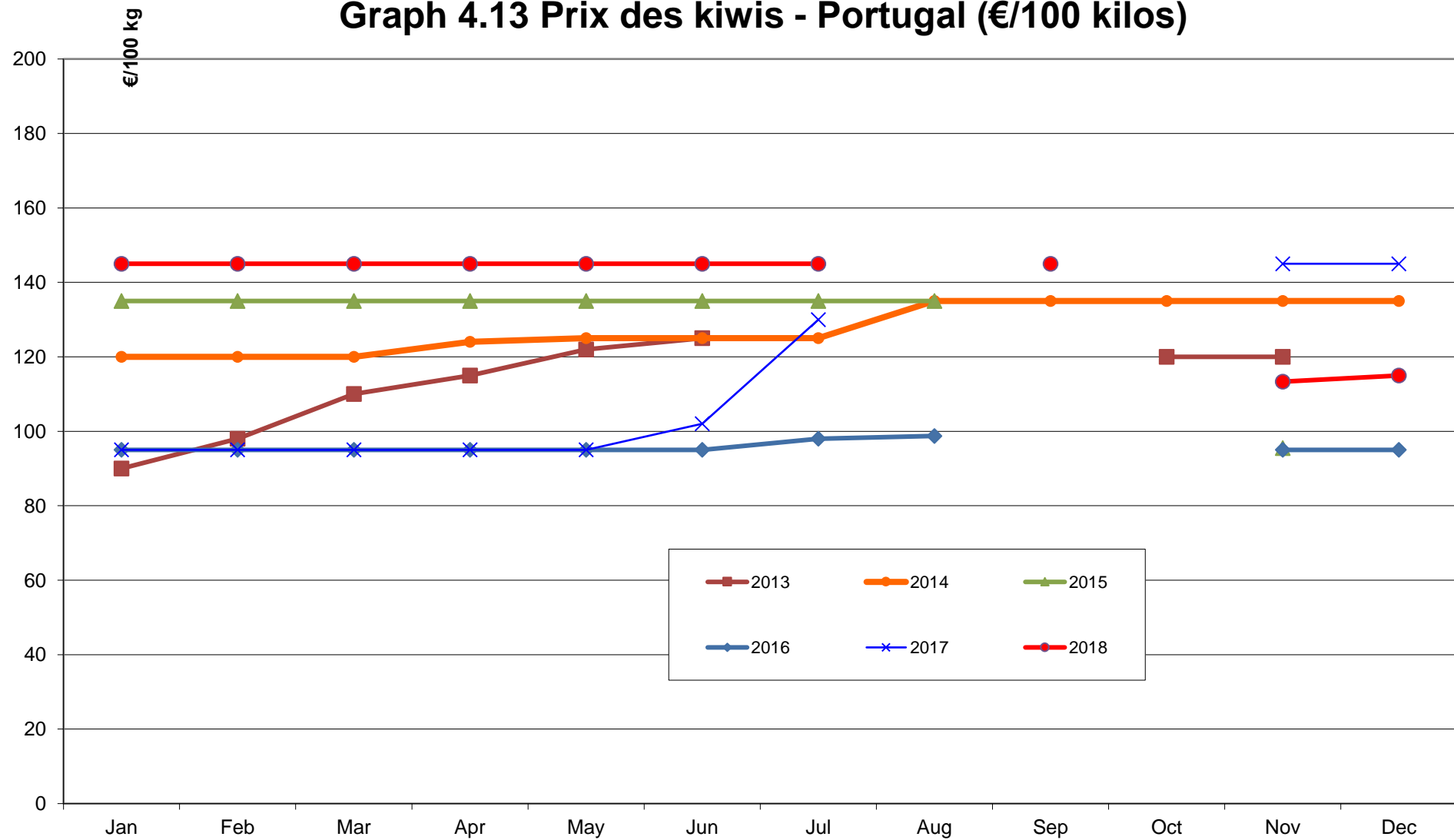
Source: AGRI-G2 (AMIS WEB) - extraction 25.04.2019 , communications par les EM

Graph 4.12 Prix des kiwis - Italie (€/100 kilos)



Source : AMIS-WEB

Graph 4.13 Prix des kiwis - Portugal (€/100 kilos)



Source : AMIS-WEB

Tableau 4.5a Prix à la production de pêches blanches dans les principaux marchés européens (€/100 kg)

Cat. I

2009	Huesca	Lleida	Rhône-Médit.	Caserta	Forli
Sem 19					
Sem 20					
Sem 21					
Sem 22					
Sem 23				120.00	
Sem 24				110.00	
Sem 25	68.89			110.00	110.00
Sem 26					
Sem 27					
Sem 28				80.00	80.00
Sem 29	63.08			80.00	65.00
Sem 30		61.70			
Sem 31	56.97				
Sem 32	56.14				
Sem 33	49.63				
Sem 34	44.89			60.00	75.00
Sem 35	39.78				75.00
Sem 36	44.89				75.00
Sem 37	45.34	58.00			
Sem 38		55.00			
Sem 39	46.61	55.00			
Sem 40	42.98	55.00			
Sem 41	45.18				
Sem 42					
Sem 43					
Sem 44					
Sem 45					
Sem 46					
Sem 47					
Sem 48					
Sem 49					
Saison Ø	50.37	56.94		93.33	80.00

Source: AMIS web - extraction 09.04.2010, communications par les EM (Règlement (CE) No 877/2004 de la Commission)

Tableau 4.5a Prix à la production de pêches blanches dans les principaux marchés européens (€/100 kg)

Cat. I

2010	Huesca	Lleida	Rhône-Médit.	Caserta	Forli
Sem 19					
Sem 20					
Sem 21					
Sem 22					
Sem 23					
Sem 24				120.00	
Sem 25					
Sem 26		95.00		103.33	110.00
Sem 27		95.00		95.00	
Sem 28		71.00		90.00	100.00
Sem 29		76.00		85.00	95.00
Sem 30		71.51		80.00	80.00
Sem 31		70.46		73.33	
Sem 32	65.95			70.00	
Sem 33	62.64				
Sem 34					70.00
Sem 35					70.00
Sem 36					
Sem 37					80.00
Sem 38					70.00
Sem 39					
Sem 40		53.50			
Sem 41					
Sem 42					
Sem 43					
Sem 44					
Sem 45					
Sem 46					
Sem 47					
Sem 48					
Sem 49					
Saison Ø	64.30	76.07		89.58	84.38

Source: AMIS web - 21.03.2011, communications par les EM (Règlement (CE) No 877/2004 de la Commission)

The following part of the sheet has been used to create charts - however chart presentation for prices details by market

Tableau 4.5a Prix à la production de pêches blanches dans les principaux marchés européens (€/100 kg)

Cat. I

2011	Huesca	Lleida	Rhône-Médit.	Caserta	Forli
Sem 19					
Sem 20					
Sem 21					
Sem 22					
Sem 23					
Sem 24					
Sem 25					
Sem 26					80.00
Sem 27		60.50			80.00
Sem 28		54.57		80.00	70.00
Sem 29		52.50		70.00	60.00
Sem 30		45.88		53.33	60.00
Sem 31	52.38	54.00			
Sem 32	62.50	47.27			
Sem 33		45.00			45.00
Sem 34	48.75				45.00
Sem 35	53.89	49.75			50.00
Sem 36	44.20	55.33			55.00
Sem 37	60.50	59.46			
Sem 38					
Sem 39					
Sem 40					
Sem 41					
Sem 42					
Sem 43					
Sem 44					
Sem 45					
Sem 46					
Sem 47					
Sem 48					
Sem 49					
Saison Ø	53.70	52.43		67.78	60.56

Source: AMIS web - 07.04.2012, communications par les EM (Règlement d'exécution (CE) No 877/2004 de la Commission)

Tableau 4.5a Prix à la production de pêches blanches dans les principaux marchés européens (€/100 kg)

Cat. I

2012	Huesca	Lleida	Rhône-Médit.	Caserta	Forli
Sem 19					
Sem 20					
Sem 21					
Sem 22					
Sem 23					
Sem 24			178.33		
Sem 25			164.00	143.33	
Sem 26			138.00	110.00	
Sem 27		54.80	128.80	108.33	
Sem 28		71.33	121.80	81.67	80.00
Sem 29		71.03	112.00	70.00	80.00
Sem 30			110.00	70.00	80.00
Sem 31			111.00		
Sem 32		69.82	115.00		
Sem 33		71.33	115.60	70.00	70.00
Sem 34		73.00	118.00		60.00
Sem 35		67.33	118.80		70.00
Sem 36		65.50	120.00		60.00
Sem 37		70.00			60.00
Sem 38		71.75			
Sem 39		71.00			
Sem 40	68.25				
Sem 41					
Sem 42					
Sem 43					
Sem 44					
Sem 45					
Sem 46					
Sem 47					
Sem 48					
Sem 49					
Saison Ø	68.25	68.81		93.33	70.00

Source: AMIS web - 22/05/2013, communications par les EM (Règlement d'exécution (UE) No 543/2011 de la Commission)

ats is deleted since 29.03.11 (by EP and GR)

Tableau 4.5a Prix à la production de pêches blanches dans les principaux marchés européens (€/100 kg)

Cat. I

2013	Huesca	Lleida	Rhône-Médit.	Athina	thesaloniki	Caserta	Forli
Sem 19				117.00			
Sem 20				117.00			
Sem 21				117.00			
Sem 22				117.00			
Sem 23			160.00				
Sem 24		82.80	160.00	135.00	117.00	115.00	
Sem 25		82.52	158.00	133.57	117.00	95.00	80.00
Sem 26		84.00	157.00	123.00	118.43	85.00	90.00
Sem 27		86.00	148.00	117.57	118.29	78.33	90.00
Sem 28		90.80	142.00	114.14	114.43	66.67	75.00
Sem 29		87.00	141.00	109.43	109.43		
Sem 30		84.33	147.50	108.00	108.00		
Sem 31		84.00	145.00	105.14	108.00		70.00
Sem 32			138.00	100.43	108.00		70.00
Sem 33			124.00	100.43	108.00		70.00
Sem 34	68.14	88.00	113.00	99.57	108.00		65.00
Sem 35	59.62	71.00	105.00	96.14	108.00		65.00
Sem 36	66.60		100.00	91.43	108.00		65.00
Sem 37				90.00	108.00		65.00
Sem 38	55.70	46.33		90.00	108.00		
Sem 39	67.19	45.67			77.29		
Sem 40					65.00		
Sem 41							
Sem 42							
Sem 43							
Sem 44							
Sem 45							
Sem 46							
Sem 47							
Sem 48							
Sem 49							
Saison Ø	63.45	77.70	138.46	109.57	106.40	88.00	73.18

Source: AMIS web - 06/05/2014, communications par les EM (Règlement d'exécution (UE) No 543/2011 de la Commission)

Tableau 4.5a Prix à la production de pêches blanches dans les principaux marchés européens (€/100 kg)

Cat. I

2014	Huesca	Lleida	Rhône-Médit.	Athina	thesaloniki	Caserta	Forli
Sem 19							
Sem 20							
Sem 21							
Sem 22							
Sem 23			165.00				
Sem 24		75.59	162.50	117.00		103.33	
Sem 25			147.00	117.00		90.00	
Sem 26		65.00	131.00	114.14		83.33	70.00
Sem 27		65.00	114.00	96.57		76.67	65.00
Sem 28	56.14	56.17	110.00	74.29		70.00	50.00
Sem 29		50.00	110.00	72.29		70.00	50.00
Sem 30		46.60	110.00	69.71	70.00	70.00	40.00
Sem 31		47.00	106.00	70.86	68.57	63.33	40.00
Sem 32		47.80	105.00	72.00	68.71	53.33	30.00
Sem 33		53.53	105.00	55.00	71.14	45.00	30.00
Sem 34		44.40	105.00	52.14	72.00	40.00	30.00
Sem 35		46.00	105.00	58.14	72.00	40.00	40.00
Sem 36		51.00	105.00	62.43	77.00		
Sem 37		58.33		66.57	84.00		
Sem 38		65.00		71.57	91.71		
Sem 39		63.00		82.29	97.57		
Sem 40		63.00		88.86	99.00		
Sem 41				90.00	99.00		
Sem 42					99.00		
Sem 43					99.00		
Sem 44							
Sem 45							
Sem 46							
Sem 47							
Sem 48							
Sem 49							
Saison Ø	56.14	56.09	120.04	79.49	83.48	67.08	44.50

Source: AMIS web - 19/05/2015, communications par les EM (Règlement d'exécution (UE) No 543/2011 de la Commission)

Tableau 4.5a Prix à la production de pêches blanches dans les principaux marchés européens (€/100 kg)

Cat. I

2015	Huesca	Lleida	Rhône-Médit.	Athina	thesaloniki	Caserta	Forli
Sem 19							
Sem 20							
Sem 21							
Sem 22							
Sem 23							
Sem 24						115.00	
Sem 25		77.00	167.00	117.00		103.33	
Sem 26		74.00	146.00	99.14		91.67	
Sem 27		65.60	145.00	92.00		78.33	65.00
Sem 28		65.40	145.00	90.57	108.00	63.33	65.00
Sem 29		63.44	137.50	85.00	108.00	60.00	60.00
Sem 30		64.80	131.00	81.57	108.00	60.00	60.00
Sem 31		63.00	126.00	79.57	106.57	60.00	60.00
Sem 32		65.25	125.00	79.00	107.43		
Sem 33		64.50	125.00	75.43	108.00		
Sem 34		66.40	125.00	74.00	108.00		70.00
Sem 35		64.46	117.00	72.00	108.00		
Sem 36			104.20	72.00	108.00		
Sem 37		67.53	92.50	72.00	108.00		70.00
Sem 38		64.95		73.43	108.00		
Sem 39		71.57		79.00	101.57		
Sem 40				81.00	99.00		
Sem 41		52.50		81.00	99.00		
Sem 42					99.00		
Sem 43							
Sem 44							
Sem 45							
Sem 46							
Sem 47							
Sem 48							
Sem 49							
Saison Ø		66.03	129.71	82.57	105.64	78.96	64.29

Source: AMIS web - 27/05/2016, communications par les EM (Règlement d'exécution (UE) No 543/2011 de la Commission)

Tableau 4.5a Prix à la production de pêches blanches dans les principaux marchés européens (€/100 kg)

Cat. I

2016	Huesca	Lleida	Rhône-Médit.	Athina	thesaloniki	Caserta	Forli
Sem 19							
Sem 20							
Sem 21							
Sem 22							
Sem 23						170.00	
Sem 24						145.00	
Sem 25		89.00	175.00	90.00		120.00	
Sem 26		79.00	148.00	90.00	99.00	100.00	
Sem 27		70.50	145.00	90.00	99.00	88.33	80.00
Sem 28		79.84	143.00	88.57	99.00	75.00	75.00
Sem 29		102.80	145.00	80.14	99.00	66.67	75.00
Sem 30		67.75	145.00	79.14	99.00		70.00
Sem 31		69.31	142.00	80.71	99.00		70.00
Sem 32		73.86	135.00	81.00	97.57		70.00
Sem 33		70.64	130.00	91.71	95.57		70.00
Sem 34		77.13	130.00	96.71	95.00		70.00
Sem 35		74.00	125.00	92.00	93.57		70.00
Sem 36			117.00	90.00	90.86		70.00
Sem 37		79.48	115.00	90.00	90.00		70.00
Sem 38		72.16		87.14	90.00		70.00
Sem 39		71.60		82.43	90.00		
Sem 40		68.20		81.00	96.43		
Sem 41		68.00		81.00	99.00		
Sem 42					99.00		
Sem 43							
Sem 44							
Sem 45							
Sem 46							
Sem 47							
Sem 48							
Sem 49							
Saison Ø		75.83	138.08	86.56	95.94	109.29	71.67

Source: AMIS web - 11/05/2017, communications par les EM (Règlement d'exécution (UE) No 543/2011 de la Commission)

Tableau 4.5a Prix à la production de pêches blanches dans les principaux marchés européens (€/100 kg)

Cat. I

2017	Huesca	Lleida	Rhône-Médit.	Athina	thesaloniki	Caserta	Forli
Sem 19							
Sem 20							
Sem 21							
Sem 22						75.00	
Sem 23			165.00			56.67	
Sem 24		75.00	152.00	97.00	99.00	50.00	
Sem 25		72.50	140.00	92.00	96.14	46.67	
Sem 26		68.33	136.00	85.00	91.43	40.00	75.00
Sem 27		70.19	129.40	81.57	90.00	40.00	75.00
Sem 28		74.58	118.75	81.00	83.57	40.00	75.00
Sem 29		65.60	116.25	81.00	78.14	40.00	75.00
Sem 30		67.64	115.00	81.00	70.57		65.00
Sem 31		68.00	110.00	78.14	68.00		65.00
Sem 32		67.00	110.00	73.43	70.86		65.00
Sem 33			110.00	72.00	72.00		65.00
Sem 34			110.00				65.00
Sem 35			110.00				70.00
Sem 36			110.00				
Sem 37							
Sem 38							
Sem 39							
Sem 40							
Sem 41					76.50		
Sem 42							
Sem 43							
Sem 44							
Sem 45							
Sem 46							
Sem 47							
Sem 48							
Sem 49							
Saison Ø	#DIV/0!	69.87	123.74	82.21	81.47	48.54	69.50

Source: AMIS web - 18/04/2018, communications par les EM (Règlement d'exécution (UE) No 543/2011 de la Commission)

Tableau 4.5a Prix à la production de pêches blanches dans les principaux marchés européens (€/100 kg)

Cat. I

2018	Huesca	Lleida	Rhône-Médit.	Athina	thesaloniki	Caserta	Forli
Sem 19							
Sem 20							
Sem 21							
Sem 22		125.00					
Sem 23						110.00	
Sem 24			179.00	113.63		100.00	
Sem 25		74.38	172.00			90.00	
Sem 26		82.41	170.00			80.00	
Sem 27		91.91	175.00			80.00	105.00
Sem 28		96.14	175.00			70.00	105.00
Sem 29		71.58	175.00			70.00	95.00
Sem 30		79.08	171.00			70.00	85.00
Sem 31		77.80	170.00			70.00	85.00
Sem 32		68.73	170.00		69.75		85.00
Sem 33		99.91	170.00		81.00		85.00
Sem 34		77.67	168.00				85.00
Sem 35		72.39	165.00				85.00
Sem 36		77.83	160.00				90.00
Sem 37		77.29					95.00
Sem 38		88.62					95.00
Sem 39		70.53			83.70		
Sem 40		68.99			85.50		
Sem 41		48.23			85.50		
Sem 42							
Sem 43							
Sem 44							
Sem 45							
Sem 46							
Sem 47							
Sem 48							
Sem 49							
Saison Ø	#DIV/0!	80.47	170.77	113.63	81.09	82.22	91.25

Source: AMIS web - 25/04/2019, communications par les EM (Règlement d'exécution (UE) No 543/2011 de la Commission)

Tableau 4.5b Prix à la production de pêches jaunes dans les principaux marchés européens (€/100 kg)

Cat. I

2009	Huesca	Lleida	Murcia	Rhône-Médit.	Hemathia	Pella	Caserta	Forli
Sem 19								
Sem 20			120.00					
Sem 21			120.00					
Sem 22			93.94					
Sem 23			90.00				98.33	130.00
Sem 24		64.50	90.00				85.00	110.00
Sem 25	59.00	64.00	75.00				80.00	110.00
Sem 26		69.04	75.00					
Sem 27		68.85	75.22					
Sem 28		70.65	75.12				60.00	80.00
Sem 29	59.22	69.29	80.00				60.00	65.00
Sem 30		64.75	70.66					
Sem 31	63.78	52.61	56.72					
Sem 32	57.23	55.97	55.69					
Sem 33	52.21	50.94	55.69					
Sem 34	47.45	52.57	80.00				40.00	75.00
Sem 35	42.99	51.79	80.00				40.00	75.00
Sem 36	46.57	47.74	63.37				40.00	75.00
Sem 37	46.19	50.05					40.00	80.00
Sem 38		49.21					40.00	80.00
Sem 39	46.55	47.63						
Sem 40	47.17	48.61						
Sem 41	47.93	48.10						
Sem 42	54.73	54.80						
Sem 43	55.14	56.80						
Sem 44	53.57	56.80						
Sem 45	53.85	56.80						
Sem 46	57.90							
Sem 47	59.59							
Sem 48								
Sem 49								
Saison Ø	52.84	56.89	79.79				58.33	88.00

Source: AMIS web - extraction 09.04.2010, communications par les EM (Règlement (CE) No 877/2004 de la Commission)

Tableau 4.5b Prix à la production de pêches jaunes dans les principaux marchés européens (€/100 kg)

Cat. I

2010	Huesca	Lleida	Murcia	Rhône-Médit.	Hemathia	Pella	Caserta	Forli
Sem 19								
Sem 20								
Sem 21			170.00					
Sem 22			149.20					
Sem 23			121.66				163.33	110.00
Sem 24			100.11					
Sem 25		71.86	82.03					110.00
Sem 26		76.45	75.00				81.67	
Sem 27		77.32	75.00				56.67	100.00
Sem 28		63.82	86.36				50.00	85.00
Sem 29		67.59	86.36				50.00	80.00
Sem 30	67.34	70.18	70.00				46.67	
Sem 31	63.20	67.06	70.00				40.00	
Sem 32	62.64	66.31	65.00				40.00	
Sem 33	60.80	61.42	68.00					70.00
Sem 34	59.72	58.61	70.00				40.00	70.00
Sem 35	53.01	54.98	72.73					
Sem 36	55.34	57.07	70.00				40.00	80.00
Sem 37	56.81	53.35	77.50					70.00
Sem 38	56.93	51.22	60.00					
Sem 39	53.25	48.12	60.00					
Sem 40	48.83	46.07						
Sem 41	44.39	38.10						
Sem 42	44.38	36.44						
Sem 43	44.25	39.03						
Sem 44	50.32							
Sem 45								
Sem 46								
Sem 47								
Sem 48								
Sem 49								
Saison Ø	54.75	58.16	85.73				60.83	86.11

Source: AMIS web - extraction 21.03.2011, communications par les EM (Règlement (CE) No 877/2004 de la Commission)

Tableau 4.5b Prix à la production de pêches jaunes dans les principaux marchés européens (€/100 kg)

Cat. I

2011	Huesca	Lleida	Murcia	Rhône-Médit.	Hemathia	Thessaloni ki	Caserta	Forli
Sem 19			200.00					
Sem 20								
Sem 21			98.00					
Sem 22			90.50					
Sem 23			90.00					
Sem 24			85.00					
Sem 25		74.93	80.00					
Sem 26		72.89	80.00					80.00
Sem 27		63.32	68.18					75.00
Sem 28		56.25	68.18				60.00	65.00
Sem 29		54.49	68.18				55.00	60.00
Sem 30		48.59	63.64				41.67	60.00
Sem 31		47.53	63.64					
Sem 32		46.44	63.64					
Sem 33		44.59	50.00				40.00	50.00
Sem 34		46.91				80.00	40.00	50.00
Sem 35		49.92				75.71	40.00	50.00
Sem 36		54.19				74.71		65.00
Sem 37		55.10	70.83			77.14		70.00
Sem 38		52.50				86.57		
Sem 39		56.16				98.57		
Sem 40		67.56				103.43		
Sem 41		72.33				104.00		
Sem 42		72.00				104.00		
Sem 43								
Sem 44								
Sem 45								
Sem 46								
Sem 47								
Sem 48								
Sem 49								
Saison Ø		57.54	82.65			89.35	46.11	62.50

Source: AMIS web - extraction 07.04.2012, communications par les EM (Règlement (CE) No 877/2004 de la Commission)

Tableau 4.5b Prix à la production de pêches jaunes dans les principaux marchés européens (€/100 kg)

2012	Huesca	Lleida	Murcia	Rhône-Médit.	Hemathia	Thessaloni ki	Caserta	Forli
Sem 19			210.00					
Sem 20			170.00					
Sem 21			174.71					
Sem 22			150.02			133.00		
Sem 23			110.00			121.57	193.33	
Sem 24			90.00	171.67		101.29	193.33	
Sem 25		81.90	78.58	161.00		95.00	123.33	120.00
Sem 26	68.89	75.30	73.83	139.00		99.00	86.67	110.00
Sem 27		73.68	60.27	128.80		99.00	78.33	110.00
Sem 28		74.81	65.00	127.40		99.00	63.33	90.00
Sem 29		71.58	79.51	115.00		97.57	50.00	80.00
Sem 30		69.54	60.00	110.00		94.86	50.00	85.00
Sem 31		69.09	50.00	111.00		97.57		
Sem 32	63.91	65.66	80.00	115.00		99.00		
Sem 33	61.53	67.07		115.60		97.57	50.00	70.00
Sem 34	62.69	66.21		118.00		92.00	50.00	75.00
Sem 35	66.29	65.25		118.80		90.00	60.00	75.00
Sem 36	67.62	66.41		120.00		90.00	60.00	70.00
Sem 37	68.75	68.69				90.00	68.33	70.00
Sem 38	67.25	64.43				90.00		
Sem 39	66.34	60.50				90.00		
Sem 40	73.48	58.42				91.43		
Sem 41	63.08	58.56				97.00		
Sem 42	62.86	62.00				99.00		
Sem 43								
Sem 44								
Sem 45								
Sem 46								
Sem 47								
Sem 48								
Sem 49								
Saison Ø		67.73	103.71			98.28	86.67	86.82

Source: AMIS web - extraction 22/05/2013, communications par les EM (Règlement d'exécution (UE) No 543/2011 de la Commission)

Tableau 4.5a Prix à la production de pêches jaunes dans les principaux marchés européens (€/100 kg)

Cat. I

2013	Huesca	Lleida	Rhône-Médit.	Athina	thesaloniki	Caserta	Forli
Sem 19							
Sem 20							
Sem 21					151.00		
Sem 22					139.57		
Sem 23					128.57		
Sem 24					113.14		
Sem 25		116.25		120.00	103.00		
Sem 26		112.20	160.00	112.86	106.00		125.00
Sem 27		106.70	156.00	108.57	104.43	73.33	115.00
Sem 28		96.19	158.00	108.00	100.14	63.33	90.00
Sem 29		100.25	159.00	100.86	100.43	51.67	100.00
Sem 30		95.78	148.00	92.29	98.86	50.00	95.00
Sem 31		84.10	142.00	87.14	89.43	50.00	80.00
Sem 32		81.82	141.00	82.43	82.43		
Sem 33	77.80	75.70	147.50	85.29	81.00		
Sem 34	75.12	70.22	144.00	89.14	78.14	50.00	70.00
Sem 35	75.52	69.56	138.00	90.00	77.00	50.00	70.00
Sem 36			124.00	90.00	77.00	50.00	70.00
Sem 37	68.53	63.89	113.00	90.00	77.00		65.00
Sem 38	70.48	64.04	105.00	85.00	77.00		65.00
Sem 39	62.86	54.82	100.00	83.00	77.00		65.00
Sem 40	61.27	53.11		72.00	77.00		65.00
Sem 41	61.44	53.06		72.00	77.00		
Sem 42	61.61	43.70			54.86		
Sem 43	61.86	41.43			46.00		
Sem 44	64.44	38.07					
Sem 45		36.00					
Sem 46		35.00					
Sem 47							
Sem 48							
Sem 49							
Saison Ø	67.36	71.04	138.25	92.27	92.00	54.79	82.69

Source: AMIS web - 06/05/2014, communications par les EM (Règlement d'exécution (UE) No 543/2011 de la Commission)

Tableau 4.5a Prix à la production de pêches jaunes dans les principaux marchés européens (€/100 kg)

Cat. I

2014	Huesca	Lleida	Murcia	Rhône-Médit.	Athina	thesaloniki	Caserta	Forli
Sem 19			121.00		104.00			
Sem 20			82.64		145.43	36.00		
Sem 21			82.64		136.29	138.86		
Sem 22			90.91		131.00	147.86		
Sem 23			92.48		113.71	122.14		
Sem 24		75.00	78.75	162.50	88.14	110.57	90.00	130.00
Sem 25			81.09	148.00	82.43	105.86	80.00	80.00
Sem 26		67.51	64.04	130.00	81.57	89.29	70.00	60.00
Sem 27		67.51	60.00	114.00	84.57	74.43	58.33	55.00
Sem 28		54.69	60.00	110.00	86.00	68.86	50.00	50.00
Sem 29	47.00	48.85	57.59	110.00	66.71	70.86	50.00	50.00
Sem 30		48.75	64.46	110.00	55.43	64.14	46.67	40.00
Sem 31	54.97	48.59	60.33	106.00	54.00	56.00	36.67	40.00
Sem 32	46.38	47.79	56.20	105.00	54.00	54.00	30.00	30.00
Sem 33	47.41	44.22	56.20	105.00	52.57	54.00	30.00	30.00
Sem 34	44.25	46.49	55.00	105.00	47.00	54.00	30.00	30.00
Sem 35	53.68	53.39	51.00	105.00	50.00	54.00	30.00	40.00
Sem 36	61.52	58.72		105.00	53.43	59.00		65.00
Sem 37	61.23	63.44			61.86	66.00		60.00
Sem 38	57.48	69.63			70.71	72.29		60.00
Sem 39	65.00	70.51			85.14	76.14		
Sem 40	65.96	71.23			96.43	77.00		
Sem 41	62.62	67.33			99.00	77.00		
Sem 42	69.00					77.00		
Sem 43						77.00		
Sem 44								
Sem 45								
Sem 46								
Sem 47								
Sem 48								
Sem 49								
Saison Ø	56.65	59.04	71.43	116.58	82.58	78.43	50.14	54.67

Source: AMIS web - 19/05/2015, communications par les EM (Règlement d'exécution (UE) No 543/2011 de la Commission)

Tableau 4.5a Prix à la production de pêches jaunes dans les principaux marchés européens (€/100 kg)

Cat. I

2015	Huesca	Lleida	Murcia	Rhône-Médit.	Athina	thesaloniki	Caserta	Forli
Sem 19								
Sem 20			132.20					
Sem 21			126.00			162.00		
Sem 22			180.00		150.00	157.00		
Sem 23			145.00		121.43	144.29		130.00
Sem 24			121.25		92.86	126.43		100.00
Sem 25		79.80	111.82	166.00	77.43	105.29	85.00	80.00
Sem 26		75.82	86.36	149.00	72.57	96.14	78.33	65.00
Sem 27		74.18	76.90	145.00	72.00	91.43	65.00	65.00
Sem 28		70.49	89.40	145.00	70.57	87.14	55.00	65.00
Sem 29		61.59	65.00	137.50	65.00	86.00	46.67	60.00
Sem 30		59.64	73.98	131.00	63.00	86.00	40.00	60.00
Sem 31		58.77	73.98	126.00	63.00	76.00	40.00	60.00
Sem 32		58.08	60.20	125.00	63.00	72.00	40.00	
Sem 33		58.78	67.82	125.00	63.00	72.00		
Sem 34		63.44	72.37	125.00	61.57	69.14		70.00
Sem 35		69.48		117.00	62.43	68.00	40.00	75.00
Sem 36		69.77		104.80	63.00	68.00		75.00
Sem 37		64.35		92.50	63.00	68.00		70.00
Sem 38		67.50			64.43	68.00		70.00
Sem 39		61.30			65.00	70.86		70.00
Sem 40		55.29			90.00	72.00		
Sem 41		56.75			90.00	72.00		
Sem 42		50.62			90.00	72.00		
Sem 43		44.33						
Sem 44		47.00						
Sem 45								
Sem 46								
Sem 47								
Sem 48								
Sem 49								
Saison Ø	#DIV/0!	62.35	98.82	129.91	77.30	90.44	54.44	74.33

Source: AMIS web - 27/05/2016, communications par les EM (Règlement d'exécution (UE) No 543/2011 de la Commission)

Tableau 4.5a Prix à la production de pêches jaunes dans les principaux marchés européens (€/100 kg)

Cat. I

2016	Huesca	Lleida	Murcia	Rhône-Médit.	Athina	thesaloniki	Caserta	Forli
Sem 19			145.00		158.00			
Sem 20			140.00		132.29	157.00		
Sem 21			135.00		109.14	134.86		
Sem 22			161.00		86.86	122.43		
Sem 23			145.15		82.14	105.29	166.67	
Sem 24		81.20	123.20		81.57	92.57	141.67	100.00
Sem 25		81.20	84.00	175.00	74.57	90.00	98.33	80.00
Sem 26		89.62	79.00	148.00	72.00	88.57	85.00	80.00
Sem 27		92.01	82.00	145.00	72.00	83.00	71.67	80.00
Sem 28		85.72	106.00	143.00	72.00	81.00	56.67	75.00
Sem 29		79.63	111.60	145.00	69.14	81.00	50.00	75.00
Sem 30		80.16	87.00	145.00	64.43	81.00	50.00	70.00
Sem 31		80.95	82.00	142.00	63.00	81.00		70.00
Sem 32		73.76	75.00	135.00	66.57	81.00		70.00
Sem 33		68.98	75.00	130.00	70.86	81.00		70.00
Sem 34		62.00	68.75	130.00	72.00	81.00		70.00
Sem 35		62.22	66.80	125.00	72.00	79.57		70.00
Sem 36		62.72	63.80	117.00	72.00	74.00		70.00
Sem 37		64.84		115.00	72.00	72.00		70.00
Sem 38		66.65			72.00	72.00		70.00
Sem 39		66.11			72.00	72.00		70.00
Sem 40		66.47			75.57	78.43		
Sem 41		63.03			77.00	81.00		
Sem 42		65.00				81.00		
Sem 43								
Sem 44								
Sem 45		62.00						
Sem 46								
Sem 47								
Sem 48								
Sem 49								
Saison Ø		72.71	101.68	138.08	80.83	89.16	90.00	74.38

Source: AMIS web - 11/05/2017, communications par les EM (Règlement d'exécution (UE) No 543/2011 de la Commission)

Tableau 4.5a Prix à la production de pêches jaunes dans les principaux marchés européens (€/100 kg)

Cat. I

2017	Huesca	Lleida	Murcia	Rhône-Médit.	Athina	thesaloniki	Caserta	Forli
Sem 19			110.00					
Sem 20			74.00			162.00		
Sem 21			92.74		105.00	142.71		
Sem 22			104.00		94.29	109.29	68.33	90.00
Sem 23			105.00	165.00	88.57	92.57	45.00	70.00
Sem 24		75.25	105.00	152.00	76.57	83.57	40.00	65.00
Sem 25		66.00	69.00	140.00	72.00	81.00	35.00	70.00
Sem 26		72.09	83.75	136.00	72.00	81.00	30.00	70.00
Sem 27		70.96	76.20	129.40	70.57	81.00	30.00	70.00
Sem 28		68.99	79.20	118.75	65.00	74.57	30.00	70.00
Sem 29		63.13	76.20	116.25	63.00	69.14	30.00	70.00
Sem 30		57.65	70.00	116.00	63.00	61.57	30.00	60.00
Sem 31		54.49	64.00	110.00	63.00	59.00	30.00	60.00
Sem 32		54.25	55.00	110.00	63.00	65.43		60.00
Sem 33				110.00	63.00	67.50		60.00
Sem 34				110.00				60.00
Sem 35				110.00				60.00
Sem 36				110.00				75.00
Sem 37								65.00
Sem 38								
Sem 39								
Sem 40								
Sem 41						67.50		
Sem 42								
Sem 43								
Sem 44								
Sem 45								
Sem 46								
Sem 47								
Sem 48								
Sem 49								
Saison Ø		64.76	83.15	123.81	73.77	86.52	36.83	67.19

Source: AMIS web - 18/04/2018, communications par les EM (Règlement d'exécution (UE) No 543/2011 de la Commission)

Tableau 4.5a Prix à la production de pêches jaunes dans les principaux marchés européens (€/100 kg)

Cat. I

2018	Huesca	Lleida	Murcia	Rhône-Médit.	Athina	thesaloniki	Caserta	Forli
Sem 19			153.26					
Sem 20			123.98					
Sem 21			85.48			124.20		
Sem 22			83.77			99.00		
Sem 23			97.24			91.80	90.00	
Sem 24			71.42	179.00	81.00		80.00	95.00
Sem 25			75.51	172.00	82.69		70.00	110.00
Sem 26			71.66	170.00	72.56		70.00	100.00
Sem 27			78.00	175.00	72.00		70.00	95.00
Sem 28			79.71	175.00	70.31		60.00	95.00
Sem 29			76.85	175.00	65.25		60.00	90.00
Sem 30			76.44	171.00	65.25		60.00	85.00
Sem 31			70.82	170.00	66.38		60.00	85.00
Sem 32			71.39	170.00		76.50	60.00	80.00
Sem 33			71.43	170.00		72.00	60.00	80.00
Sem 34			73.73	168.00	63.00			80.00
Sem 35			69.45	165.00	69.75			85.00
Sem 36			71.39	160.00	69.75			90.00
Sem 37			73.41		69.75			95.00
Sem 38			74.90		72.00			95.00
Sem 39			66.11			74.70		
Sem 40			70.37			76.50		
Sem 41			70.92			76.50		
Sem 42			79.79					
Sem 43			90.99					
Sem 44			107.81					
Sem 45			95.81					
Sem 46								
Sem 47								
Sem 48								
Sem 49								
Saison Ø		#DIV/0!	82.65	170.77	70.75	86.40	67.27	90.67

Source: AMIS web - 25/04/2019, communications par les EM (Règlement d'exécution (UE) No 543/2011 de la Commissi

Tableau 4.6a Prix à la production de nectarines blanches dans les principaux marchés européens (€/100 kg)

Cat. I

2010	Lleida	Zaragoza	Rhône-Médit.	Forli	Ravenna
Sem 19					
Sem 20					
Sem 21					
Sem 22					
Sem 23					
Sem 24					
Sem 25			167.50		
Sem 26	85.84		160.00	110.00	
Sem 27	84.50		148.00		
Sem 28	64.30		140.00	100.00	80.00
Sem 29	70.18		128.33	90.00	90.83
Sem 30	69.38		114.00	80.00	85.00
Sem 31	67.58		110.00		72.50
Sem 32	67.60	63.45	113.00		65.00
Sem 33	70.40	65.26	107.40		
Sem 34	64.17		98.40	70.00	50.00
Sem 35	62.67		91.60	70.00	42.50
Sem 36	58.66		86.00		40.00
Sem 37	60.11		84.00	70.00	
Sem 38	55.00		80.00	60.00	35.00
Sem 39	54.00				
Sem 40	51.50				
Sem 41	51.50				
Sem 42					
Sem 43					
Sem 44					
Sem 45					
Sem 46					
Sem 47					
Sem 48					
Sem 49					
Saison Ø	64.84	64.36	116.30	81.25	62.31

AMIS web -
21.03.2011,
communicat

Tableau 4.6a Prix à la production de nectarines blanches dans les principaux marchés européens (€/100 kg)

Cat. I

2011	Lleida	Zaragoza	Rhône-Médit.	Forli	Ravenna
Sem 19					
Sem 20					
Sem 21					
Sem 22					
Sem 23			167.50		
Sem 24			156.25		
Sem 25	63.27		128.00		
Sem 26	66.86		115.00	90.00	58.33
Sem 27	56.42		113.00	80.00	58.33
Sem 28	55.91		110.00	70.00	55.00
Sem 29	57.45		105.00	60.00	42.50
Sem 30	52.15		105.00	60.00	31.67
Sem 31	50.25		105.00		
Sem 32	48.43		105.00		
Sem 33	47.24		105.00	50.00	35.00
Sem 34	56.92		106.20	45.00	38.33
Sem 35			107.00		42.50
Sem 36			107.00		45.00
Sem 37					45.00
Sem 38					45.00
Sem 39					
Sem 40					
Sem 41		64.46			
Sem 42					
Sem 43					
Sem 44					
Sem 45					
Sem 46					
Sem 47					
Sem 48					
Sem 49					
Saison Ø	55.49	64.46	116.78	65.00	45.15

Source: AMIS web - 07.04.2012, communications par les EM (Règlement (CE) No 8
55 Commission)

Tableau 4.6a Prix à la production de nectarines blanches dans les principaux marchés européens (€/100 kg)

Cat. I

2012	Lleida	Zaragoza	Rhône-Médit.	Forli	Ravenna
Sem 19					
Sem 20					
Sem 21					
Sem 22					
Sem 23					
Sem 24					
Sem 25			187.00		95.00
Sem 26	63.48		148.00		
Sem 27	71.06		140.00	135.00	70.83
Sem 28	77.48		140.00	100.00	66.67
Sem 29	72.06		128.60	110.00	57.50
Sem 30	71.68		120.00	100.00	55.00
Sem 31	72.85		120.00		
Sem 32	66.85		120.00		
Sem 33	74.75		121.00	80.00	55.00
Sem 34	77.06		125.00	75.00	55.00
Sem 35	70.00		125.00	80.00	55.00
Sem 36	69.75		125.00	80.00	55.00
Sem 37	74.72				
Sem 38					
Sem 39	71.00	79.95			
Sem 40					
Sem 41					
Sem 42					
Sem 43					
Sem 44					
Sem 45					
Sem 46					
Sem 47					
Sem 48					
Sem 49					
Saison Ø	71.75	79.95	133.30	95.00	62.78

77/2004 de la

Tableau 4.6a Prix à la production de nectarines blanches dans les principaux marchés européens (€/100 kg)

Cat. I

2013	Lleida	Murcia	Zaragoza	Rhône-Médit.	Thessanoliki	Athina	Forli	Ravenna
Sem 19		250.00						
Sem 20						135.00		
Sem 21						119.29		
Sem 22						109.43		
Sem 23				182.50		108.00		
Sem 24	99.72			176.00				
Sem 25	109.36			170.00	117.00			
Sem 26	95.97			165.00	118.43		100.00	80.00
Sem 27	89.04			155.00	125.43		90.00	70.00
Sem 28	82.99			150.00	127.29		100.00	65.00
Sem 29	85.28			150.00	123.43		85.00	55.00
Sem 30	82.66			152.50	118.43			
Sem 31	82.17			150.00	117.00			
Sem 32	71.31			143.00	110.57		65.00	45.00
Sem 33	68.87			131.00	108.00		65.00	40.00
Sem 34				123.00	108.00		65.00	
Sem 35	88.39			110.00	108.00		65.00	
Sem 36	83.23			100.00	108.00		65.00	
Sem 37			64.87		108.00		65.00	
Sem 38					108.00		65.00	
Sem 39					108.00			
Sem 40			68.50		77.29			
Sem 41			63.65		65.00			
Sem 42								
Sem 43								
Sem 44								
Sem 45								
Sem 46								
Sem 47								
Sem 48								
Sem 49								
Saison Ø	86.58	250.00	65.68	147.00	109.17		75.45	59.17

Source: AMIS web - extraction 06/05/2014, communications par les EM (Règlement d'exécution (UE) No 543/2011 de la Commission)

Tableau 4.6b Prix à la production de nectarines blanches dans les principaux marchés européens (€/100 kg)

Cat. I

2014	Lleida	Murcia	Zaragoza	Rhône-Médit.	Thessanoli ki	Athina	Forli	Ravenna
Sem 19								
Sem 20								
Sem 21								
Sem 22								
Sem 23				200.00				
Sem 24				182.50				
Sem 25				153.00		108.00		
Sem 26	68.75			137.00		108.00	80.00	
Sem 27	68.75			126.00		93.71	75.00	
Sem 28	59.85			120.00		73.71	50.00	30.00
Sem 29	48.69			118.75		74.43	50.00	
Sem 30	49.21			115.00	68.00	72.00	40.00	
Sem 31	48.28		54.95	115.00	68.00	68.57	40.00	30.00
Sem 32	48.28			115.00	68.71	68.36	30.00	37.50
Sem 33	46.56			115.00	71.14	71.00	30.00	37.50
Sem 34	47.65			115.00	72.00	72.00	30.00	37.50
Sem 35	44.60			115.00	72.00	72.00	40.00	40.00
Sem 36	52.20			115.00	77.00	77.00		
Sem 37					84.00	84.00		
Sem 38					91.71	91.71		
Sem 39					97.57	97.57		
Sem 40					99.00	99.00		
Sem 41					99.00	99.00		
Sem 42					99.00	99.00		
Sem 43					99.00	99.00		
Sem 44								
Sem 45								
Sem 46								
Sem 47								
Sem 48								
Sem 49								
Saison Ø	52.98		54.95		83.30		46.50	35.42

Source: AMIS web - extraction 19/05/2015, communications par les EM (Règlement d'exécution (UE) No 543/2011 de la Commission)

Tableau 4.6b Prix à la production de nectarines blanches dans les principaux marchés européens (€/100 kg)

Cat. I

2015	Lleida	Murcia	Zaragoza	Rhône-Médit.	Thessanoli ki	Athina	Forli	Ravenna
Sem 19								
Sem 20		137.00						
Sem 21		127.00						
Sem 22		150.00						
Sem 23		145.00						
Sem 24		133.75						
Sem 25	82.83	119.09		172.50				
Sem 26	76.50	100.91		158.00				
Sem 27	70.96			150.00			65.00	50.00
Sem 28	67.46			150.00	108.00		65.00	50.00
Sem 29	65.10			142.50	108.00		60.00	45.00
Sem 30	62.05			136.00	108.00		60.00	40.00
Sem 31	63.50			132.00	106.57		60.00	35.00
Sem 32	61.33			130.00	106.00			
Sem 33	63.99			130.00	101.00			
Sem 34	63.20			130.00	99.00	72.00	70.00	45.00
Sem 35	64.40			126.00	99.00	72.00	75.00	50.00
Sem 36	64.75			118.00	99.00		75.00	55.00
Sem 37	64.20			108.33	99.00			55.00
Sem 38	63.00		74.69		99.00			55.00
Sem 39					99.00			
Sem 40					99.00			
Sem 41					99.00			
Sem 42					99.00			
Sem 43								
Sem 44								
Sem 45								
Sem 46								
Sem 47								
Sem 48								
Sem 49								
Saison Ø	66.66	130.39	74.69	137.18	101.90	72.00	66.25	48.64

Source: AMIS web - extraction 27/05/2016, communications par les EM (Règlement d'exécution (UE) No 543/2011 de la Commission)

Tableau 4.6b Prix à la production de nectarines blanches dans les principaux marchés européens (€/100 kg)

Cat. I

2016	Lleida	Murcia	Zaragoza	Rhône-Médit.	Thessanoliki	Athina	Forli	Ravenna
Sem 19		140.00						
Sem 20								
Sem 21								
Sem 22								
Sem 23								
Sem 24								
Sem 25	92.00			191.25				
Sem 26	83.00			156.00	108.00			60.00
Sem 27	79.74			150.00	108.00		90.00	60.00
Sem 28	78.36			148.00	101.57		75.00	60.00
Sem 29	76.58			150.00	99.00		75.00	55.00
Sem 30	72.82			150.00	99.00		70.00	50.00
Sem 31	79.94			143.00	99.00		70.00	50.00
Sem 32	78.77			140.00	100.43		70.00	50.00
Sem 33	76.86			135.00	103.14		70.00	50.00
Sem 34	82.91			140.00	104.00		70.00	50.00
Sem 35	77.84			135.00	102.57		70.00	50.00
Sem 36	74.67			123.00	99.86		70.00	
Sem 37	73.00			120.00	99.00		70.00	
Sem 38	85.24				99.00		70.00	
Sem 39	70.60		79.93		99.00			
Sem 40	71.40				99.00			
Sem 41	69.00				99.00			
Sem 42					99.00			
Sem 43								
Sem 44								
Sem 45								
Sem 46								
Sem 47								
Sem 48								
Sem 49								
Saison Ø	77.81	140.00	79.93	144.71	101.09		72.50	53.50

Source: AMIS web - extraction 11/05/2017, communications par les EM (Règlement d'exécution (UE) No 543/2011 de la Commission)

Tableau 4.6b Prix à la production de nectarines blanches dans les principaux marchés européens (€/100 kg)

Cat. I

2017	Lleida	Murcia	Zaragoza	Rhône-Médit.	Thessanoliki	Athina	Forli	Ravenna
Sem 19								
Sem 20								
Sem 21								
Sem 22								
Sem 23				180.00				
Sem 24	77.00			162.00				
Sem 25	71.26			150.00	90.00			45.00
Sem 26	69.71			146.00	90.00		80.00	45.00
Sem 27	67.71			139.40	90.00		80.00	45.00
Sem 28	65.07		72.58	128.75	83.57		80.00	45.00
Sem 29	64.43		58.92	125.00	81.00		80.00	45.00
Sem 30	61.01			122.00	84.57		70.00	40.00
Sem 31	56.36			120.00	86.00		70.00	40.00
Sem 32	61.52			120.00	76.00		70.00	35.00
Sem 33				120.00	72.00		70.00	35.00
Sem 34				118.75	72.00		70.00	40.00
Sem 35				115.00	72.00		75.00	45.00
Sem 36				115.00	72.00			50.00
Sem 37					76.50			
Sem 38					76.50			
Sem 39					76.50			
Sem 40					81.00			
Sem 41					81.00			
Sem 42								
Sem 43								
Sem 44								
Sem 45								
Sem 46								
Sem 47								
Sem 48								
Sem 49								
Saison Ø	66.01		65.75	132.99	80.04		74.50	42.50

Source: AMIS web - extraction 18/04/2018, communications par les EM (Règlement d'exécution (UE) No 543/2011 de la Commission)

Tableau 4.6b Prix à la production de nectarines blanches dans les principaux marchés européens (€/100 kg)

Cat. I

2018	Lleida	Murcia	Zaragoza	Rhône-Médit.	Thessanolyki	Athina	Forli	Ravenna
Sem 19								
Sem 20								
Sem 21								
Sem 22	126.00				99.00			
Sem 23	104.17							
Sem 24				200.00				
Sem 25	96.00			182.00				
Sem 26	89.00			175.00				
Sem 27	86.00			180.00				105.00
Sem 28	88.00			185.00				105.00
Sem 29	84.00			183.00	94.50		70.00	90.00
Sem 30	88.00			180.00	90.00		80.00	85.00
Sem 31	75.00			180.00			80.00	85.00
Sem 32				180.00			80.00	85.00
Sem 33	69.10			180.00	85.50		85.00	85.00
Sem 34	73.65			176.00	85.50		85.00	85.00
Sem 35				170.00	90.00		85.00	90.00
Sem 36				167.00	90.00			95.00
Sem 37	75.52				90.00			95.00
Sem 38					90.00			95.00
Sem 39								
Sem 40								
Sem 41								
Sem 42								
Sem 43								
Sem 44								
Sem 45								
Sem 46								
Sem 47								
Sem 48								
Sem 49								
Saison Ø	87.87		#DIV/0!	179.85	90.50		80.71	91.67

Source: AMIS web - extraction 25/04/2019, communications par les EM (Règlement d'exécution (UE) No 543/2011 de la Commission)

Tableau 4.6b Prix à la production de nectarines jaunes dans les principaux marchés européens (€/100 kg)

Cat. I

2010	Lleida	Murcia	Zaragoza	Rhône-Médit.	Hemathia	Skydra	Forli	Ravenna
Sem 19								
Sem 20								
Sem 21								
Sem 22								
Sem 23								
Sem 24							140.00	
Sem 25	91.88			169.00				
Sem 26	89.06			151.00			110.00	
Sem 27	84.99			144.00				
Sem 28	67.79			140.00			100.00	93.33
Sem 29	73.32		72.50	125.00			90.00	95.00
Sem 30	74.92		73.90	113.00			85.00	90.00
Sem 31	74.95		72.37	110.00				72.50
Sem 32	74.50		68.93	110.00				65.00
Sem 33	70.80		67.37	106.20				
Sem 34	63.55		67.58	98.40			70.00	50.00
Sem 35	62.07		62.10	91.60			70.00	42.50
Sem 36	60.95		60.07	86.00				40.00
Sem 37	59.16		59.71	84.00			70.00	35.00
Sem 38	54.58		61.31	80.00			60.00	35.00
Sem 39	53.41		57.57					
Sem 40	53.84		51.99					
Sem 41	56.48		52.90					
Sem 42								
Sem 43								
Sem 44								
Sem 45								
Sem 46								
Sem 47								
Sem 48								
Sem 49								
Saison Ø	68.60		63.72	114.87			88.33	61.83

Tableau 4.6b Prix à la production de nectarines jaunes dans les principaux marchés européens (€/100 kg)

Cat. I

2011	Lleida	Murcia	Zaragoza	Rhône-Médit.	Thessanoli ki	Skydra	Forli	Ravenna
Sem 19								
Sem 20								
Sem 21								
Sem 22								
Sem 23				160.00				
Sem 24				148.75				70.00
Sem 25	76.55			127.00				60.00
Sem 26	79.43			115.00			90.00	55.00
Sem 27	67.43		65.43	113.00			70.00	55.00
Sem 28	62.28		65.81	110.00			60.00	50.00
Sem 29	55.70		55.89	105.00			60.00	42.50
Sem 30	51.04		56.33	105.00			60.00	31.67
Sem 31	49.29		57.25	105.00				
Sem 32	46.26		51.70	105.00				
Sem 33	46.24		49.50	105.00			50.00	35.00
Sem 34	49.19		55.78	105.00			45.00	37.50
Sem 35	51.56		52.78	105.00	70.00		45.00	37.50
Sem 36	56.37		56.31	105.00	66.43		55.00	40.00
Sem 37	57.17		56.61		65.71		60.00	40.00
Sem 38	59.74		55.95		68.14			40.00
Sem 39	62.00		56.33		69.00			
Sem 40			63.10		89.00			
Sem 41			62.71		89.71			
Sem 42			60.87		90.00			
Sem 43					90.00			
Sem 44								
Sem 45								
Sem 46								
Sem 47								
Sem 48								
Sem 49								
Saison Ø	58.02		57.65	115.27	77.55		59.50	45.71

Source: AMIS web - extraction 21.03.2011, communications par les EM (Règlement (CE) No 877/2004 de la Commission) Source: AMIS web - 07.04.2012, communications par les EM (Règlement (CE) No 877/2004 de la Commission)

Tableau 4.6b Prix à la production de nectarines jaunes dans les principaux marchés européens (€/100 kg)

Cat. I

2012	Lleida	Murcia	Zaragoza	Rhône-Médit.	Thessanoli ki	Skydra	Forli	Ravenna
Sem 19		215.00						
Sem 20		220.00						
Sem 21		200.00						
Sem 22		175.00						
Sem 23		155.00			97.00			
Sem 24		160.00		190.00	95.57			
Sem 25	116.85	115.00		170.00	95.00		140.00	96.67
Sem 26	69.22			146.00	99.00		120.00	76.67
Sem 27	82.89	90.00		140.00	99.00		120.00	70.83
Sem 28	84.88	85.00		140.00	99.00		110.00	67.50
Sem 29	75.96	80.00		128.60	99.00		90.00	57.50
Sem 30	74.09	80.00		120.00	96.14		95.00	55.00
Sem 31	73.41		71.91	120.00	91.43			
Sem 32	69.98		72.35	120.00	90.00			
Sem 33	72.83		70.30	120.60	88.57		80.00	55.00
Sem 34	70.30		64.78	123.00	83.00		80.00	55.00
Sem 35	67.81		62.72	124.60	81.00		80.00	55.00
Sem 36	69.58		71.63	125.00	81.00		75.00	55.00
Sem 37	68.52		68.11		81.00		75.00	55.00
Sem 38	66.69		72.04		81.00			
Sem 39	67.09		73.02		81.00			
Sem 40	73.03		73.88		81.00			
Sem 41			72.05		81.00			
Sem 42			72.37					
Sem 43			71.86					
Sem 44								
Sem 45								
Sem 46								
Sem 47								
Sem 48								
Sem 49								
Saison Ø	75.20		70.54	135.98	89.46		96.82	63.56

Tableau 4.6b Prix à la production de nectarines jaunes dans les principaux marchés européens (€/100 kg)

2013	Lleida	Murcia	Zaragoza	Rhône-Médit.	Thessanoli ki	Athina	Forli
Sem 19							
Sem 20		135.00					
Sem 21		150.00					
Sem 22		155.00			162.00		
Sem 23		155.00			152.00		
Sem 24		155.00			120.86		
Sem 25	114.58	155.00			103.57	108.00	
Sem 26	111.79	140.00		177.50	106.00	108.00	130.00
Sem 27	101.63	140.00		175.00	104.43	108.00	125.00
Sem 28	94.24			170.00	101.57	108.00	110.00
Sem 29	96.01			165.00	107.43	100.86	95.00
Sem 30	87.30			155.00	107.86	92.29	100.00
Sem 31	83.25	85.00		150.00	94.86	90.00	95.00
Sem 32	82.18			150.00	83.57	85.00	
Sem 33	79.89		81.31	152.50	81.00	81.57	
Sem 34	77.46		75.76	150.00	81.00	81.00	65.00
Sem 35	70.73		67.70	143.00	81.00	81.00	65.00
Sem 36				131.00	81.00	81.00	68.00
Sem 37	68.27		62.04	123.00	81.00	81.00	65.00
Sem 38	63.58		68.94	110.00	81.00	81.00	65.00
Sem 39	62.01		63.68	100.00	81.00	76.00	65.00
Sem 40	58.00		60.45		81.00	72.57	65.00
Sem 41	54.33		67.75		81.00	72.00	
Sem 42	44.00		65.90		58.14	72.00	
Sem 43	43.40		63.48		49.00		
Sem 44	45.75		67.44				
Sem 45	46.00						
Sem 46							
Sem 47							
Sem 48							
Sem 49							
Saison Ø	74.22	141.11	67.68	146.57	94.56		85.62

Source:

Source: AMIS web - extraction 22/05/2013, communications par les EM (Règlement d'exécution (UE) No 543/2011 de la Cor AMIS web -

Tableau 4.6b Prix à la production de nectarines jaunes dans les principaux marchés européens (€/100 kg)

2014	Lleida	Murcia	Zaragoza	Rhône-Médit.	Thessanoli ki	Athina	Forli	Ravenna
Sem 19		115.00				176.00		
Sem 20		90.91				173.14		
Sem 21		86.78				134.00		
Sem 22		95.45			135.00	128.43		
Sem 23		86.78			97.86	119.57		
Sem 24	78.97	78.51			100.86	95.71		80.00
Sem 25		81.82		167.50	105.14	84.43	150.00	53.33
Sem 26	69.37	81.82		148.00	95.43	81.57	100.00	36.67
Sem 27	69.37	81.82		136.00	81.29	84.57	70.00	30.00
Sem 28	56.71	64.46		121.00	70.57	86.00	65.00	30.00
Sem 29	50.06	45.00		115.00	67.29	68.14	50.00	
Sem 30	48.84			115.00	61.29	56.00	50.00	
Sem 31	48.59			115.00	55.43	59.00	40.00	30.00
Sem 32	47.98	45.00	54.17	115.00	54.00	57.43	40.00	37.50
Sem 33	43.78	45.00	41.45	115.00	54.00	53.14	30.00	37.50
Sem 34	46.25	50.00	55.42	115.00	54.00	52.00	30.00	37.50
Sem 35	53.82		49.31	115.00	54.00	58.43	30.00	40.00
Sem 36	59.42		50.60	115.00	59.00	62.43	40.00	50.00
Sem 37	55.90		62.28	115.00	66.00	66.57	65.00	50.00
Sem 38	68.60		57.82		72.29	72.29	60.00	50.00
Sem 39	74.30		60.44		76.14	85.43	60.00	
Sem 40	74.10		72.98		77.00	96.43		
Sem 41					77.00	99.00		
Sem 42					77.00			
Sem 43					77.00			
Sem 44								
Sem 45								
Sem 46								
Sem 47								
Sem 48								
Sem 49								
Saison Ø	59.13	74.88	56.05	123.65	75.80	89.12	58.67	43.27

Source: AMIS web - extraction 19/05/2015, communications par les EM (Règlement d'exécution (UE) No 543/2011 de la Commission)

Tableau 4.6b Prix à la production de nectarines jaunes dans les principaux marchés européens (€/100 kg)

2015	Lleida	Murcia	Zaragoza	Rhône-Médit.	Thessanoli ki	Athina	Forli	Ravenna
Sem 19								
Sem 20		137.00						
Sem 21		128.00			162.00			
Sem 22		150.00			162.00	135.00		
Sem 23		145.00			152.71	140.00		
Sem 24					135.43	121.29	120.00	
Sem 25		119.09		172.50	107.86	113.00	90.00	67.92
Sem 26	74.24	100.91		156.00	96.14	90.14	70.00	57.50
Sem 27	72.60	64.00		150.00	91.43	81.00	65.00	50.00
Sem 28	67.95	79.00		150.00	90.00	81.00	65.00	50.00
Sem 29	61.80	65.78		142.50	90.00	76.00	60.00	45.00
Sem 30	59.51	73.00	59.37	136.00	90.00	76.14	60.00	40.00
Sem 31	58.02	73.00	57.23	132.00	79.29	78.43	60.00	35.00
Sem 32	57.48	59.60	57.13	130.00	76.43	74.00		
Sem 33	62.54	55.00	58.13	130.00	77.00	67.00		
Sem 34	65.46	76.92	58.64	130.00	73.43	62.14	70.00	45.00
Sem 35	71.07		63.04	126.00	72.00	63.86	75.00	50.00
Sem 36	70.81		62.29	118.00	72.00	70.00	75.00	55.00
Sem 37	68.90		64.50	103.00	72.00	72.00	75.00	55.00
Sem 38	70.87		66.02		72.00	77.00	75.00	55.00
Sem 39	70.95		63.39		72.00	88.29	70.00	55.00
Sem 40	60.06				72.00	92.71		
Sem 41	56.56				72.00	93.00		
Sem 42					72.00			
Sem 43								
Sem 44								
Sem 45								
Sem 46								
Sem 47								
Sem 48								
Sem 49								
Saison Ø	65.55	94.74	60.97	136.62	93.62	87.60	73.57	50.80

Source: AMIS web - extraction 27/05/2016, communications par les EM (Règlement d'exécution (UE) No 543/2011 de la Commission)

Tableau 4.6b Prix à la production de nectarines jaunes dans les principaux marchés européens (€/100 kg)

2016	Lleida	Murcia	Zaragoza	Rhône-Médit.	Thessanoli ki	Athina	Forli	Ravenna
Sem 19		140.00				158.00		
Sem 20						122.29		
Sem 21						120.86		
Sem 22					117.00	114.57		
Sem 23					117.00	100.71		
Sem 24	98.20				110.57	93.43	120.00	
Sem 25	88.12			191.25	108.00	84.14	92.50	
Sem 26	84.45			156.00	105.14	81.00	90.00	55.00
Sem 27	97.07			150.00	94.00	79.57	80.00	60.00
Sem 28	86.99			148.00	83.57	74.00	75.00	60.00
Sem 29	86.62		77.63	150.00	81.00	78.43	75.00	55.00
Sem 30	87.17		68.56	150.00	81.00	87.43	70.00	55.00
Sem 31	86.46		68.05	143.00	81.00	90.00	70.00	55.00
Sem 32	82.84		62.68	140.00	81.00	85.00	70.00	55.00
Sem 33	81.42		52.93	135.00	81.00	81.57	70.00	55.00
Sem 34	83.64		67.58	140.00	81.00	78.14	70.00	55.00
Sem 35	84.81		69.15	135.00	80.29	73.43	70.00	55.00
Sem 36	85.46		69.06	123.00	77.86	72.00	70.00	55.00
Sem 37	80.48		68.57	120.00	77.00	75.57	70.00	55.00
Sem 38	81.00		70.50		77.00	83.43	70.00	55.00
Sem 39	80.17		70.61		77.00	88.86	70.00	55.00
Sem 40	80.42				79.86	90.00		
Sem 41	71.00		68.11		81.00	90.00		
Sem 42			72.61		81.00			
Sem 43								
Sem 44								
Sem 45								
Sem 46								
Sem 47								
Sem 48								
Sem 49								
Saison Ø	84.80	140.00	68.16	144.71	88.20	91.41	77.03	55.71

Source: AMIS web - extraction 11/05/2017, communications par les EM (Règlement d'exécution (UE) No 543/2011 de la Commission)

Tableau 4.6b Prix à la production de nectarines jaunes dans les principaux marchés européens (€/100 kg)

2017	Lleida	Murcia	Zaragoza	Rhône-Médit.	Thessanoli ki	Athina	Forli	Ravenna
Sem 19								
Sem 20					162.00			
Sem 21					158.43			
Sem 22					134.86		110.00	
Sem 23				173.75	119.57	90.00	80.00	
Sem 24	76.21			162.00	99.14	78.57	70.00	47.50
Sem 25	72.55			150.00	87.71	72.57	75.00	45.00
Sem 26	76.08		74.94	146.00	81.71	72.00	75.00	45.00
Sem 27	74.63		63.89	139.40	80.71	72.00	75.00	45.00
Sem 28	72.01		61.53	128.75	74.57	72.00	75.00	45.00
Sem 29	73.20		58.86	125.00	69.14	72.00	75.00	45.00
Sem 30	65.74			122.00	77.29	72.00	65.00	40.00
Sem 31	62.38		59.07	120.00	81.00	70.57	65.00	40.00
Sem 32	62.14		59.81	120.00	71.71	65.00	65.00	35.00
Sem 33				120.00		67.50	65.00	35.00
Sem 34				118.75			65.00	40.00
Sem 35				115.00			65.00	45.00
Sem 36				115.00			80.00	50.00
Sem 37							70.00	50.00
Sem 38								50.00
Sem 39								50.00
Sem 40								
Sem 41					72.00			
Sem 42								
Sem 43								
Sem 44								
Sem 45								
Sem 46								
Sem 47								
Sem 48								
Sem 49								
Saison Ø	70.55		63.02	132.55	97.85	73.11	73.44	44.22

Source: AMIS web - extraction 18/04/2018, communications par les EM (Règlement d'exécution (UE) No 543/2011 de la Commission)

Tableau 4.6b Prix à la production de nectarines jaunes dans les principaux marchés européens (€/100 kg)

2018	Lleida	Murcia	Zaragoza	Rhône-Médit.	Thessanoli ki	Athina	Forli	Ravenna
Sem 19	161.62							
Sem 20	131.41							
Sem 21	123.84				158.40			
Sem 22	107.42				144.00			
Sem 23	119.87				113.40		90.00	
Sem 24	89.61			200.00		92.25	80.00	120.00
Sem 25	86.69			182.00		88.31	70.00	125.00
Sem 26	82.89			175.00		78.15	70.00	95.00
Sem 27	88.73			180.00		81.00	70.00	90.00
Sem 28	88.81			185.00		79.31	60.00	90.00
Sem 29	83.54			183.00		86.06	60.00	90.00
Sem 30	86.33			180.00		87.75	60.00	85.00
Sem 31	87.55			180.00		73.13	60.00	85.00
Sem 32	89.93			180.00	76.50		60.00	80.00
Sem 33	93.15			180.00	81.00		60.00	80.00
Sem 34	91.77			178.00		78.75		85.00
Sem 35	94.07			170.00		82.13		90.00
Sem 36	94.67			167.00		86.63		90.00
Sem 37	95.16					93.38		95.00
Sem 38	93.27					94.50		95.00
Sem 39	68.75				81.00			
Sem 40	75.76				81.00			
Sem 41	70.77				81.00			
Sem 42								
Sem 43								
Sem 44								
Sem 45								
Sem 46								
Sem 47								
Sem 48								
Sem 49								
Saison Ø	95.90			180.00	102.04	84.72	67.27	93.00

Source: AMIS web - extraction 25/04/2019, communications par les EM (Règlement d'exécution (UE) No 543/2011 de la Commission)

End page

Thank you