

EU Market Situation for eggs

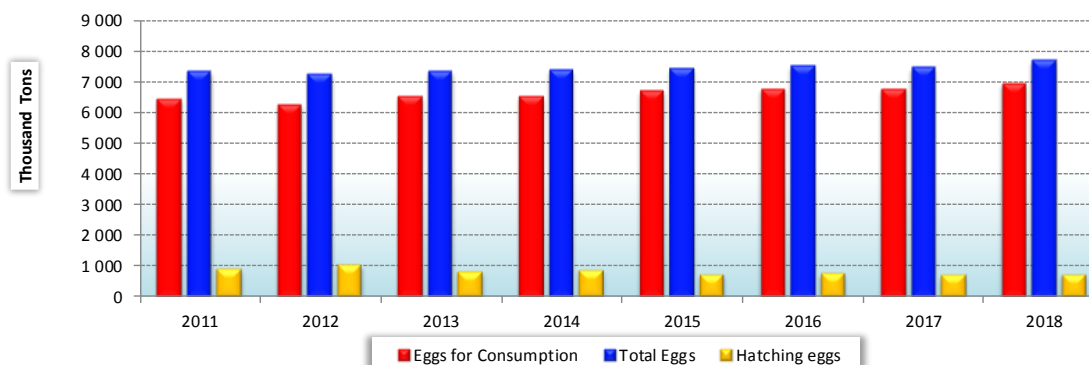
**Civil Dialog Group on
Poultry & eggs**

18 May 2018



Experts EU production forecast on Eggs

(Missing or incomplete data (BE-EL-HR-CY-SE) - No expert (BG-EE-LV-MT-SK))



	2010	2011	2012	2013	2014	2015	2016	2017	2018	Change 17/16	Change 18/17
Total Eggs	7 297	7 333	7 256	7 341	7 375	7 427	7 509	7 451	7 669	- 0.8%	+ 2.9%
Eggs for Consumption	6 462	6 433	6 240	6 509	6 509	6 695	6 758	6 755	6 932	- 0.0%	+ 2.6%
Hatching eggs	835	900	1 016	812	867	732	751	696	737	- 7.3%	+ 5.8%
% of hatching eggs on total eggs	11.4%	12.3%	14.0%	11.1%	11.8%	9.9%	10.0%	9.3%	9.6%		

FORECAST



EU production of total eggs (expert forecast May 2018)

Source : Experts WG

Qty in Tonnes

% change

	2016	2017	2018		%2017/2016	%2018/2017
FR	956 000	994 000	985 000		4.0	-0.9
DE	880 000	890 000	912 000		1.1	2.5
ES	814 000	773 800	839 900		-4.9	8.5
IT	840 000	808 000	833 000		-3.8	3.1
UK	780 800	762 400	777 600		-2.4	2.0
NL	715 000	684 000	716 000		-4.3	4.7
PL	603 500	607 500	622 500		0.7	2.5
RO	360 000	320 000	360 000		-11.1	12.5
BE	200 000	200 000	200 000		0.0	0.0
CZ	161 200	174 700	175 000		8.4	0.2
HU	147 300	149 370	151 650		1.4	1.5
PT	134 000	135 000	136 000		0.7	0.7
SE	134 000	134 000	134 000		0.0	0.0
EL	128 000	128 000	128 000		0.0	0.0
AT	115 180	115 880	115 950		0.6	0.1
BG	94 000	94 000	94 000		0.0	0.0
DK	82 000	84 200	86 800		2.7	3.1
FI	71 500	74 000	75 000		3.5	1.4
IE	45 000	70 180	73 200		56.0	4.3
SK	71 000	71 000	71 000		0.0	0.0
LT	51 700	50 000	51 000		-3.3	2.0
LV	42 200	42 200	42 200		0.0	0.0
HR	35 090	41 090	41 090		17.1	0.0
SI	20 400	21 000	21 000		2.9	0.0
CY	10 100	10 000	10 100		-1.0	1.0
EE	9 800	9 800	9 800		0.0	0.0
EU	7 148 870	7 131 220	7 308 890		-0.2	2.5

EU average without Romania

EU market situation for Poultry & eggs

Agriculture
and Rural
Development

18 May 2018



EU production of eggs for consumption (expert forecast May 2018)

Source : Experts WG

Qty in Tonnes

% change

	2016	2017	2018		%2017/2016	%2018/2017
FR	875 000	913 000	904 000		4.3	-1.0
DE	803 000	813 000	835 000		1.2	2.7
IT	805 000	768 000	794 000		-4.6	3.4
ES	759 000	721 000	793 000		-5.0	10.0
UK	673 000	658 920	672 100		-2.1	2.0
NL	638 000	606 000	638 000		-5.0	5.3
PL	516 500	519 000	532 500		0.5	2.6
RO	345 000	375 000	375 000		8.7	0.0
CZ	138 300	149 700	150 000		8.2	0.2
BE	143 000	143 000	143 000		0.0	0.0
HU	130 300	130 600	131 000		0.2	0.3
SE	115 000	115 000	115 000		0.0	0.0
PT	111 000	111 700	112 000		0.6	0.3
AT	108 670	109 330	109 400		0.6	0.1
EL	100 000	100 000	100 000		0.0	0.0
BG	88 000	88 000	88 000		0.0	0.0
DK	72 400	74 600	77 200		3.0	3.5
FI	62 700	65 000	65 000		3.7	0.0
SK	63 900	63 900	63 900		0.0	0.0
IE	41 000	58 000	60 000		41.5	3.4
LT	51 700	49 000	50 000		-5.2	2.0
LV	41 100	41 100	41 100		0.0	0.0
HR	31 000	36 700	36 700		18.4	0.0
SI	20 400	20 500	21 000		0.5	2.4
EE	9 200	9 200	9 200		0.0	0.0
CY	9 100	9 000	9 100		-1.1	1.1
MT	6 900	6 900	6 900		0.0	0.0
EU	6 413 170	6 380 150	6 557 100		-0.5	2.8

EU average without Romania

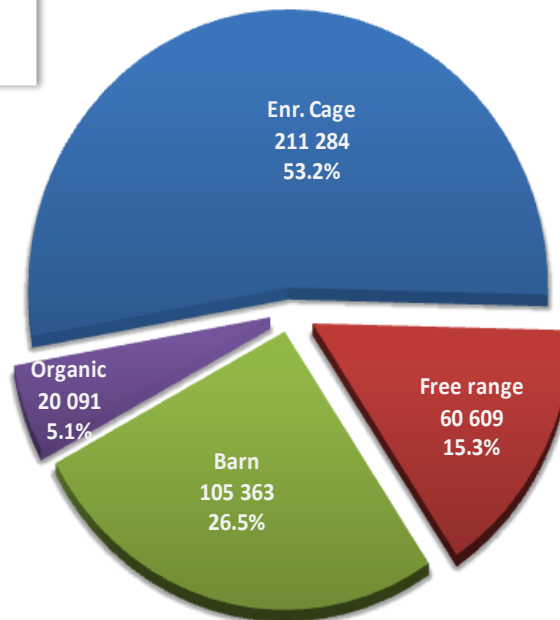
EU market situation for Poultry & eggs

Agriculture
and Rural
Development

18 May 2018

Number of Laying Hens 2017 by way of keeping based on the EU Member States that communicated data according to Commission Implementing Regulation (EC) 2017/1185

MS communicated data
(MT prel number)



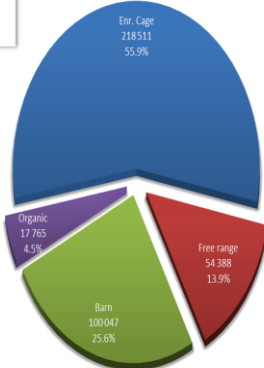
Total not in cage
186 063 610 laying hens = 46,8%

Total Enr. cage
211 283 874 laying hens = 53,2%

Total Laying Hens
397 347 484 laying hens

Number of Laying Hens 2016 by way of keeping based on the EU Member States that communicated data according to Commission Implementing Regulation (EC) 2017/1185

27 MS communicated data
Missing (MT)



Total alternative
172 200 779 laying hens = 44.1%

Total Enr. cage
218 510 860 laying hens = 55.9%

Total Laying Hens
390 711 639 laying hens

LAYING HENS



AGRI G3

Moyenne poules pondeuses présentes par type d'élevage

Average number of laying hens

R. 2017/1185, Art. 12(b) - Annex III.10

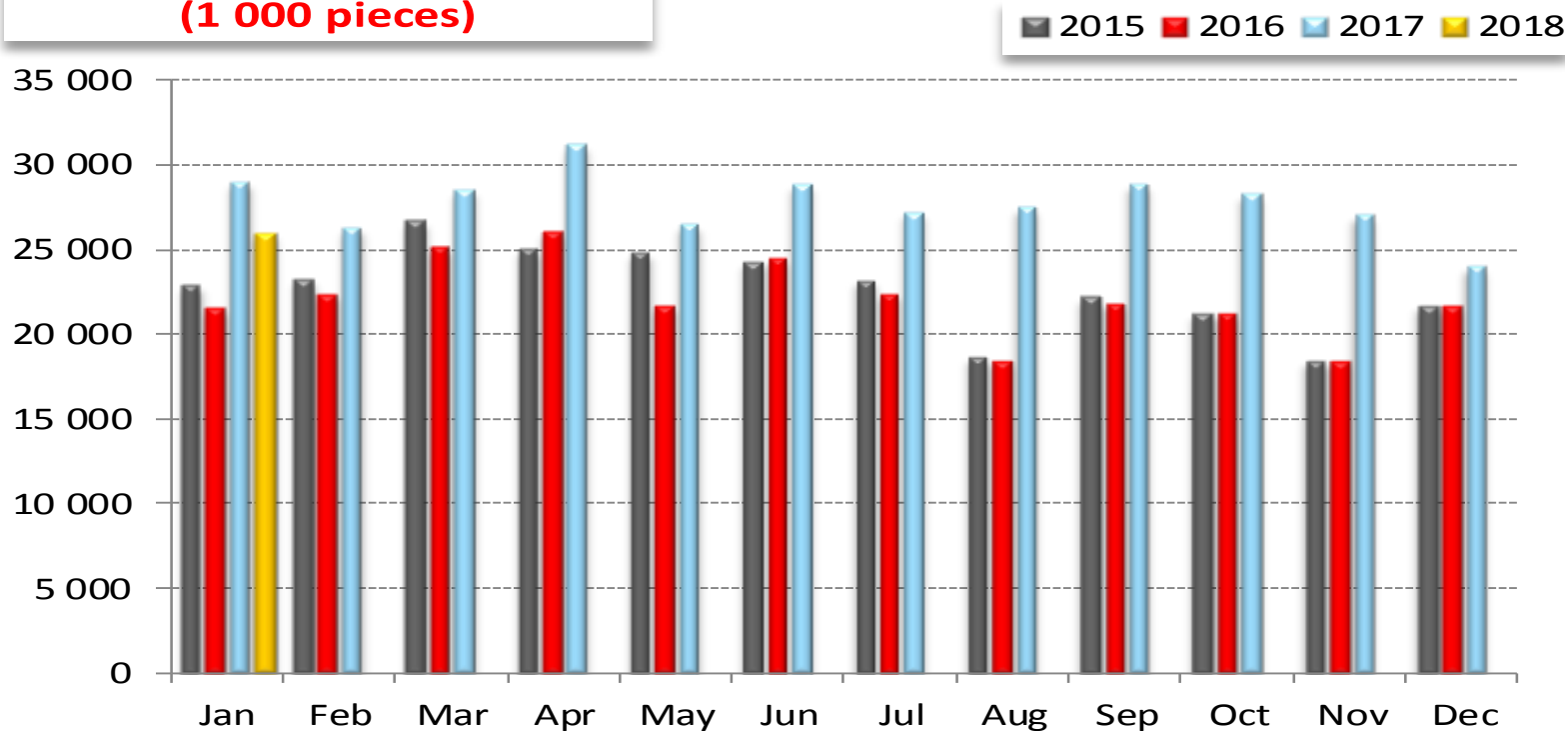
17.05.2018

(NOMBRE POULES)

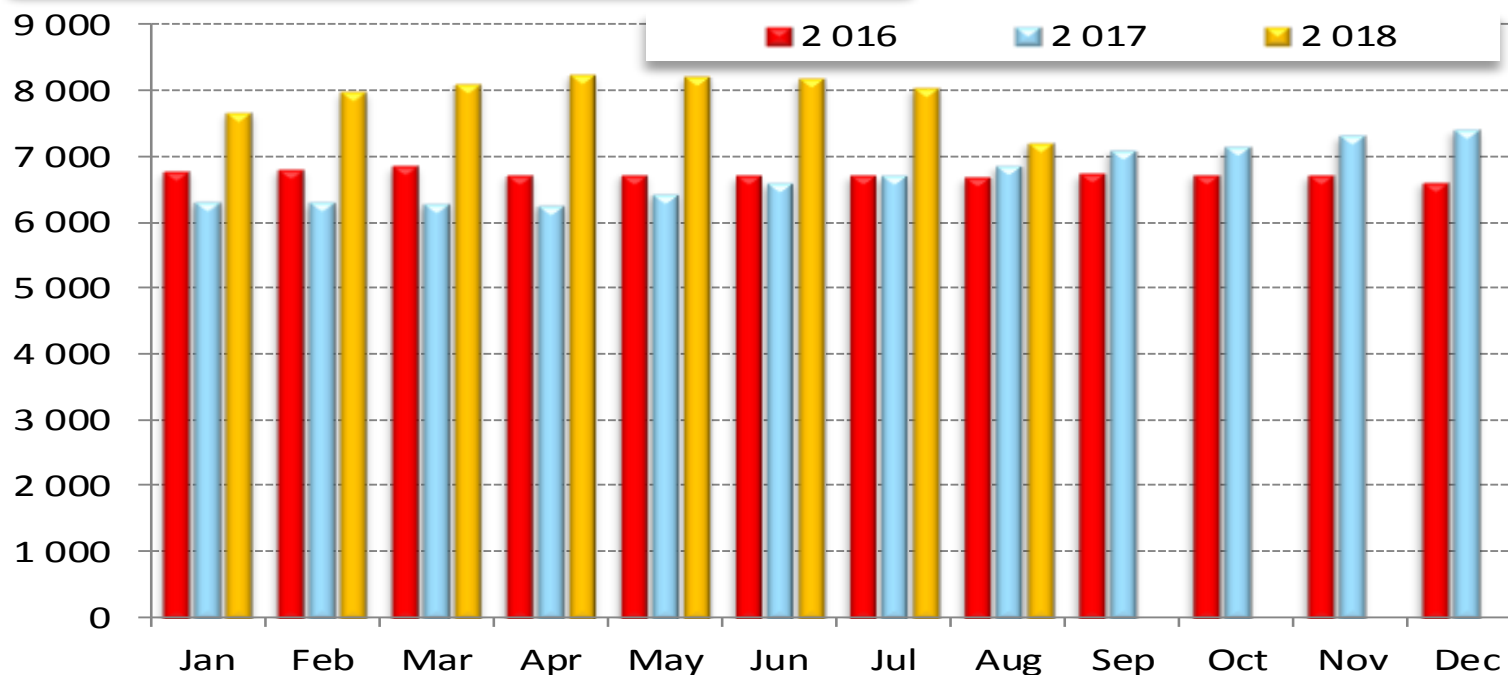
2017

	Production alternative										Total General by MS	% MS/Total	Total/Total Altern.		
	Cage	Enriched	% enriched	Free range	% free range	Barn	% Barn	Organic	% Organic	Total Altern. No enriched included			Total by MS	% altern./total I altern.	
			/ total enriched		/ total free range		/ total Barn		/ total Organic						
BE		3 699 795	<div><div></div></div> 39.3%	1 298 505	<div><div></div></div> 13.8%	4 007 687	<div><div></div></div> 42.6%	412 445	<div><div></div></div> 4.4%	9 418 433	<div><div></div></div> 2.4%	5 718 638	9 418 433	<div><div></div></div> 60.7%	
BG		2 703 935	<div><div></div></div> 56.5%	171 964	<div><div></div></div> 3.6%	1 912 787	<div><div></div></div> 39.9%	0	<div><div></div></div> 0.0%	4 788 687	<div><div></div></div> 1.2%	2 084 751	4 788 687	<div><div></div></div> 43.5%	
CZ		4 876 207	<div><div></div></div> 84.0%	8 900	<div><div></div></div> 0.2%	905 428	<div><div></div></div> 15.6%	16 350	<div><div></div></div> 0.3%	5 806 886	<div><div></div></div> 1.5%	930 678	5 806 886	<div><div></div></div> 16.0%	
DK		865 188	<div><div></div></div> 19.6%	371 571	<div><div></div></div> 8.4%	1 864 655	<div><div></div></div> 42.1%	1 322 927	<div><div></div></div> 29.9%	4 424 342	<div><div></div></div> 1.1%	3 559 154	4 424 342	<div><div></div></div> 80.4%	
DE		3 631 054	<div><div></div></div> 6.9%	9 764 018	<div><div></div></div> 18.5%	33 163 317	<div><div></div></div> 63.0%	6 096 269	<div><div></div></div> 11.6%	52 654 659	<div><div></div></div> 13.3%	49 023 605	52 654 659	<div><div></div></div> 93.1%	
EE		907 942	<div><div></div></div> 86.3%	31 448	<div><div></div></div> 3.0%	76 401	<div><div></div></div> 7.3%	36 089	<div><div></div></div> 3.4%	1 051 881	<div><div></div></div> 0.3%	143 938	1 051 881	<div><div></div></div> 13.7%	
IE		1 881 394	<div><div></div></div> 54.2%	1 445 790	<div><div></div></div> 41.7%	37 871	<div><div></div></div> 1.1%	105 609	<div><div></div></div> 3.0%	3 470 665	<div><div></div></div> 0.9%	1 589 270	3 470 665	<div><div></div></div> 45.8%	
EL		3 631 413	<div><div></div></div> 84.4%	123 501	<div><div></div></div> 2.9%	418 051	<div><div></div></div> 9.7%	127 347	<div><div></div></div> 3.0%	4 300 313	<div><div></div></div> 1.1%	668 899	4 300 313	<div><div></div></div> 15.6%	
ES		41 046 685	<div><div></div></div> 87.8%	2 531 860	<div><div></div></div> 5.4%	2 822 867	<div><div></div></div> 6.0%	331 505	<div><div></div></div> 0.7%	46 732 918	<div><div></div></div> 11.8%	5 686 232	46 732 918	<div><div></div></div> 12.2%	
FR		31 806 415	<div><div></div></div> 64.8%	9 857 493	<div><div></div></div> 20.1%	3 134 536	<div><div></div></div> 6.4%	4 247 725	<div><div></div></div> 8.7%	49 046 170	<div><div></div></div> 12.4%	17 239 754	49 046 170	<div><div></div></div> 35.2%	
HR		1 358 702	<div><div></div></div> 73.1%	29 652	<div><div></div></div> 1.6%	468 691	<div><div></div></div> 25.2%	699	<div><div></div></div> 0.0%	1 857 745	<div><div></div></div> 0.5%	499 042	1 857 745	<div><div></div></div> 26.9%	
IT		21 597 438	<div><div></div></div> 61.8%	956 554	<div><div></div></div> 2.7%	10 881 049	<div><div></div></div> 31.1%	1 528 615	<div><div></div></div> 4.4%	34 963 657	<div><div></div></div> 8.8%	13 366 218	34 963 657	<div><div></div></div> 38.2%	
CY		325 318	<div><div></div></div> 71.7%	44 732	<div><div></div></div> 9.9%	73 773	<div><div></div></div> 16.3%	9 664	<div><div></div></div> 2.1%	453 488	<div><div></div></div> 0.1%	128 169	453 488	<div><div></div></div> 28.3%	
LV		2 447 954	<div><div></div></div> 86.5%	46 116	<div><div></div></div> 1.6%	333 685	<div><div></div></div> 11.8%	1 520	<div><div></div></div> 0.1%	2 829 276	<div><div></div></div> 0.7%	381 321	2 829 276	<div><div></div></div> 13.5%	
LT		2 670 443	<div><div></div></div> 95.7%	2 252	<div><div></div></div> 0.1%	107 193	<div><div></div></div> 3.8%	10 650	<div><div></div></div> 0.4%	2 790 539	<div><div></div></div> 0.7%	120 095	2 790 539	<div><div></div></div> 4.3%	
LU		0	<div><div></div></div> 0.0%	12 000	<div><div></div></div> 10.5%	90 200	<div><div></div></div> 79.0%	12 000	<div><div></div></div> 10.5%	114 201	<div><div></div></div> 0.0%	114 201	114 201	<div><div></div></div> 100.0%	
HU		4 423 666	<div><div></div></div> 63.4%	45 860	<div><div></div></div> 0.7%	2 478 990	<div><div></div></div> 35.5%	26 670	<div><div></div></div> 0.4%	6 975 187	<div><div></div></div> 1.8%	2 551 520	6 975 187	<div><div></div></div> 36.6%	
MT		0	<div><div></div></div> 0.0%	0	<div><div></div></div> 0.0%	0	<div><div></div></div> 0.0%	0	<div><div></div></div> 0.0%	0	<div><div></div></div> 0.0%	0	0	<div><div></div></div> 0.0%	
NL		6 234 000	<div><div></div></div> 18.2%	5 487 000	<div><div></div></div> 16.0%	20 608 000	<div><div></div></div> 60.0%	1 997 000	<div><div></div></div> 5.8%	34 326 001	<div><div></div></div> 8.6%	28 092 001	34 326 001	<div><div></div></div> 81.8%	
AT		61 622	<div><div></div></div> 0.9%	1 499 623	<div><div></div></div> 22.3%	4 377 351	<div><div></div></div> 65.0%	794 888	<div><div></div></div> 11.8%	6 733 485	<div><div></div></div> 1.7%	6 671 863	6 733 485	<div><div></div></div> 99.1%	
PL		40 182 119	<div><div></div></div> 86.8%	1 493 022	<div><div></div></div> 3.2%	4 441 954	<div><div></div></div> 9.6%	152 815	<div><div></div></div> 0.3%	46 269 911	<div><div></div></div> 11.7%	6 087 791	46 269 911	<div><div></div></div> 13.2%	
PT		8 556 836	<div><div></div></div> 92.7%	148 056	<div><div></div></div> 1.6%	470 322	<div><div></div></div> 5.1%	50 698	<div><div></div></div> 0.5%	9 225 913	<div><div></div></div> 2.3%	669 076	9 225 913	<div><div></div></div> 7.3%	
RO		4 779 611	<div><div></div></div> 59.9%	281 809	<div><div></div></div> 3.5%	2 863 960	<div><div></div></div> 35.9%	58 744	<div><div></div></div> 0.7%	7 984 125	<div><div></div></div> 2.0%	3 204 513	7 984 125	<div><div></div></div> 40.1%	
SI		687 110	<div><div></div></div> 57.3%	38 882	<div><div></div></div> 3.2%	448 693	<div><div></div></div> 37.4%	24 336	<div><div></div></div> 2.0%	1 199 022	<div><div></div></div> 0.3%	511 911	1 199 022	<div><div></div></div> 42.7%	
SK		2 601 903	<div><div></div></div> 84.5%	23 280	<div><div></div></div> 0.8%	447 608	<div><div></div></div> 14.5%	5 334	<div><div></div></div> 0.2%	3 078 126	<div><div></div></div> 0.8%	476 222	3 078 126	<div><div></div></div> 15.5%	
FI		2 591 251	<div><div></div></div> 60.0%	129 905	<div><div></div></div> 3.0%	1 369 175	<div><div></div></div> 31.7%	231 267	<div><div></div></div> 5.4%	4 321 599	<div><div></div></div> 1.1%	1 730 347	4 321 599	<div><div></div></div> 40.0%	
SE		988 488	<div><div></div></div> 12.3%	244 461	<div><div></div></div> 3.0%	5 474 563	<div><div></div></div> 67.9%	1 353 469	<div><div></div></div> 16.8%	8 060 982	<div><div></div></div> 2.0%	7 072 494	8 060 982	<div><div></div></div> 87.7%	
UK		16 399 876	<div><div></div></div> 37.2%	24 520 695	<div><div></div></div> 55.6%	2 075 142	<div><div></div></div> 4.7%	1 136 778	<div><div></div></div> 2.6%	44 132 492	<div><div></div></div> 11.1%	27 732 616	44 132 492	<div><div></div></div> 62.8%	
EUR 28		210 956 365	<div><div></div></div> 53%	60 608 949	<div><div></div></div> 15%	105 353 949	<div><div></div></div> 27%	20 091 413	<div><div></div></div> 5%	397 010 677	<div><div></div></div> 100%	186 054 321	397 010 677	<div><div></div></div> 46.9%	
Percentage of total		53.1%		15.3%		26.5%		5.1%							

Chicks hatched for laying (1 000 pieces)

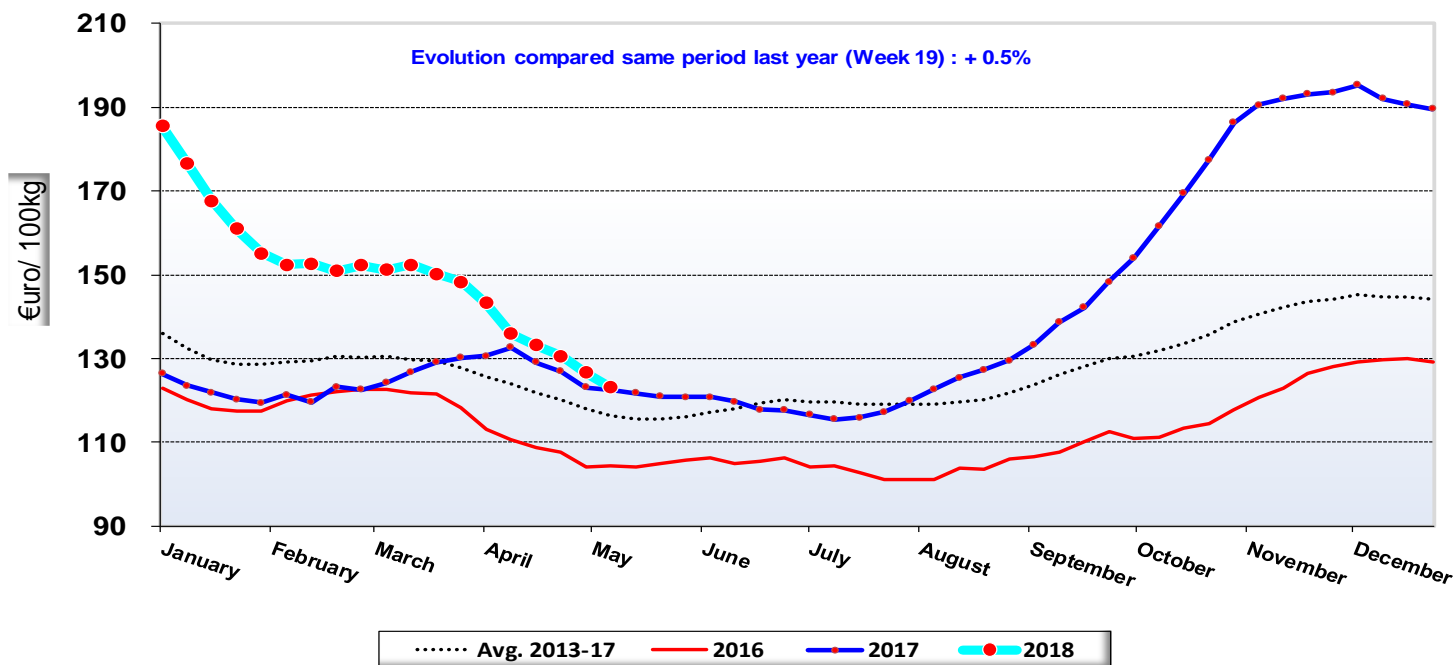


Production forecast of eggs in shell (Mio pieces)



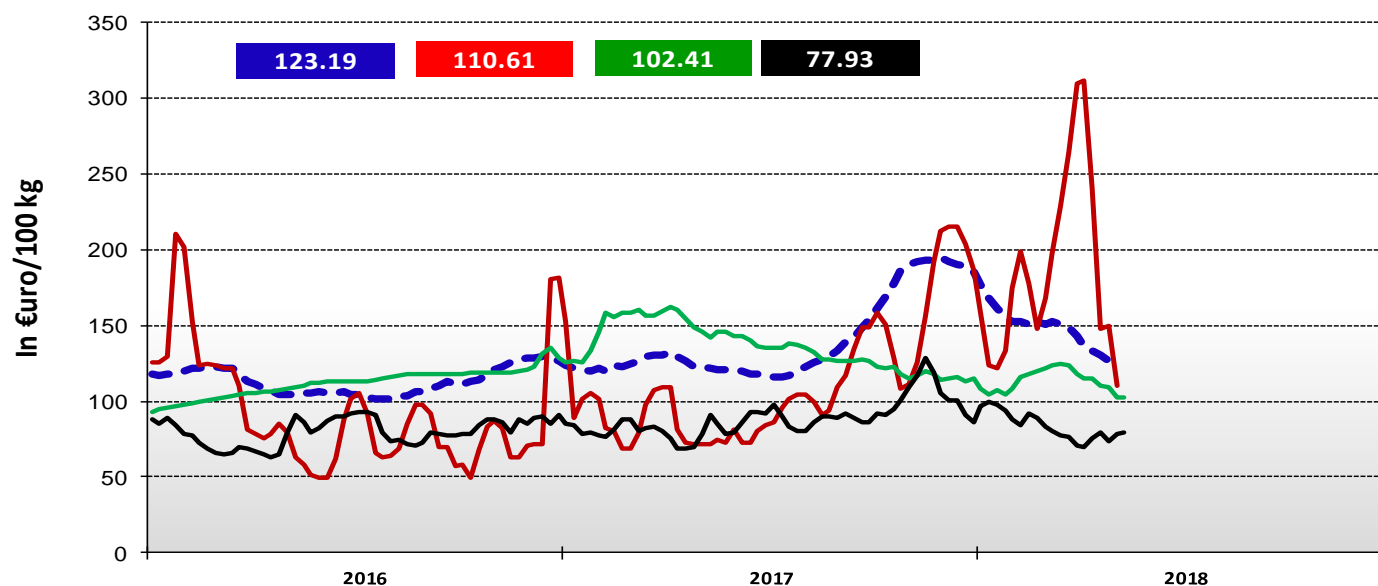
Evolution of the weekly EU average price for **Class A eggs** in packing stations

Latest price ==> 123.19 EUR/100 kg



Source: MSs notifications (Commission Implementing Regulation (EC) 2017/1185)

Egg prices of EU, USA, Brazil and India



Sources:

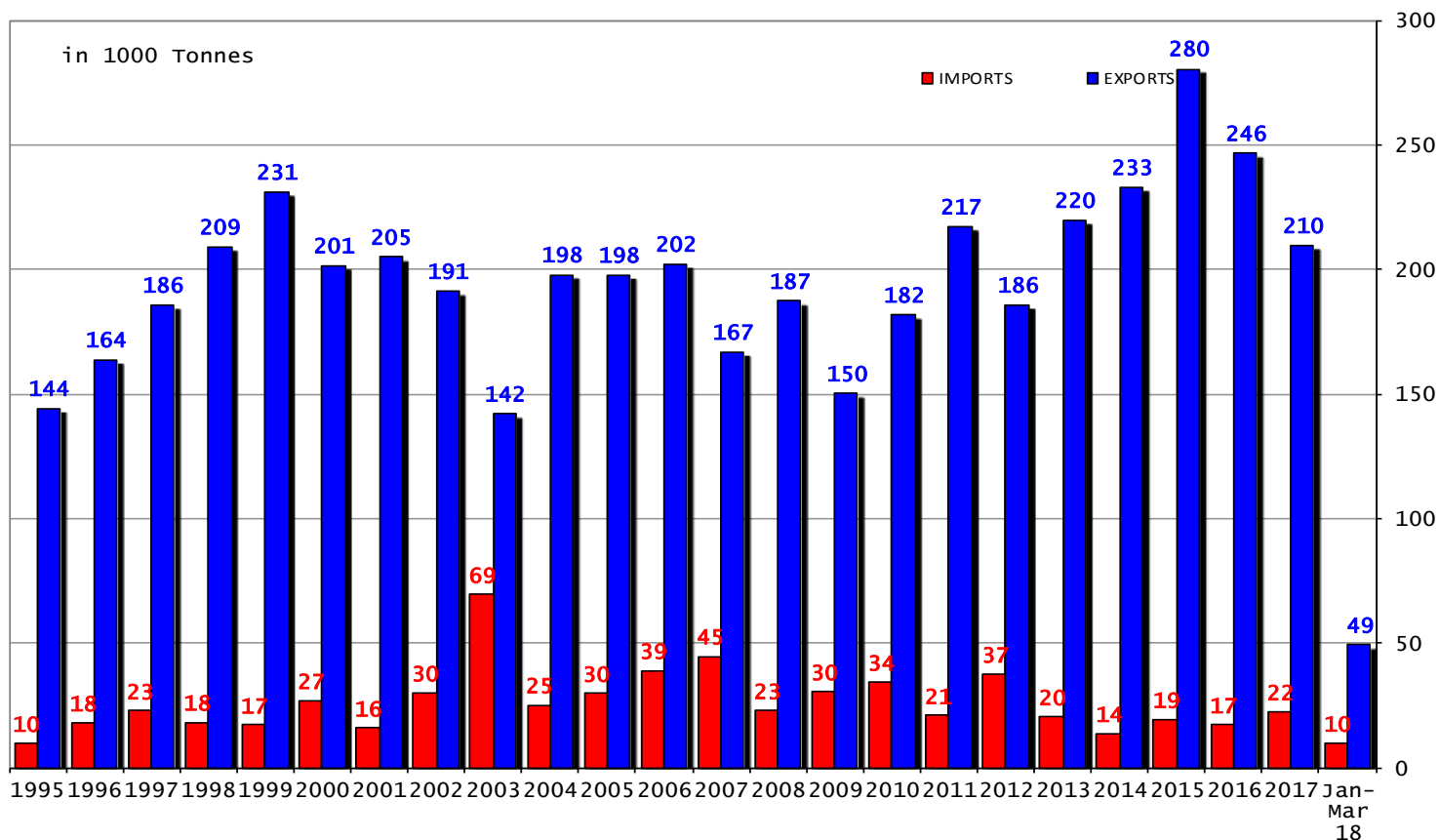
EU = weighted average of MS prices - Average class L&M

US = weekly USDA prices - Eggs grade A, Chicago

BR = average of prices in main producing states - (noticiasagricolas.com.br)

IN = average of NECC prices in available Production Centres - (e2necc.com)

EU Egg Trade Balance (not including Hatching eggs)



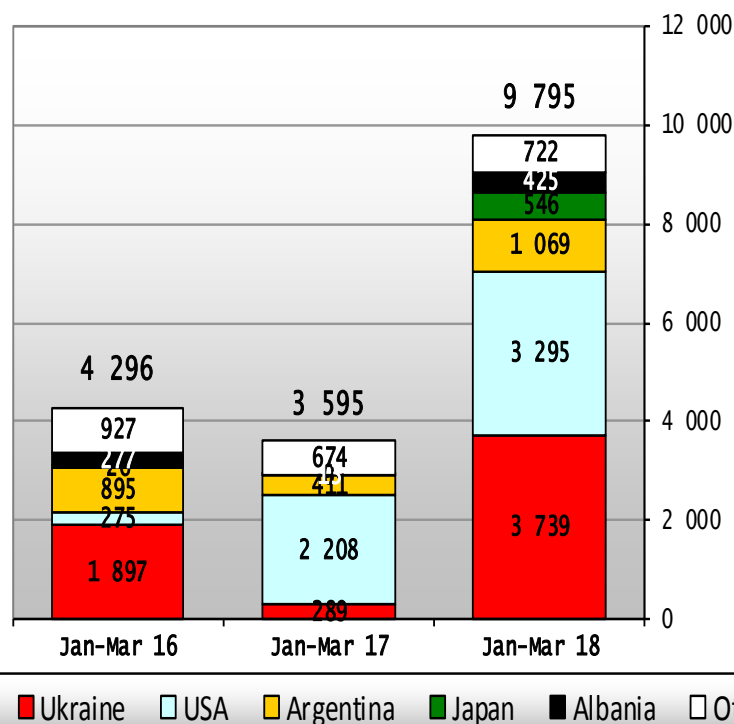
EU Imports of Eggs:

Trade Figures (Comext – tonnes egg equiv.) not incl. Hatching eggs

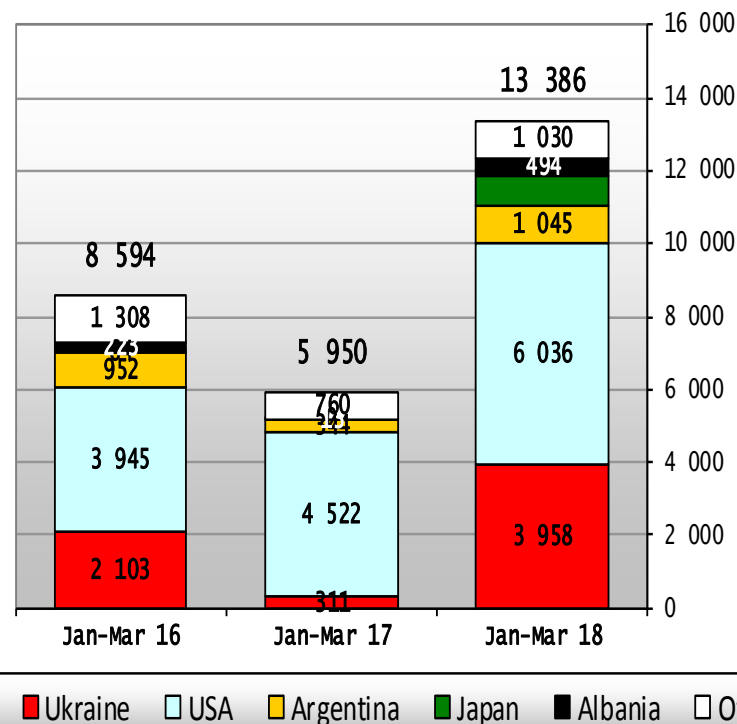
	2014		2015		2016		2017		Jan-Mar 18		Compared to Jan-Mar 17
	tonnes	%	tonnes	%	tonnes	%	tonnes	%	tonnes	%	
Ukraine	163	1.2%	3 665	19.0%	8 043	46.9%	2 938	13.1%	3 739	38.2%	+++
USA	4 156	30.5%	2 745	14.2%	3 450	20.1%	11 558	51.7%	3 295	33.6%	+ 49%
Argentina	1 433	10.5%	3 232	16.7%	1 864	10.9%	2 921	13.1%	1 069	10.9%	+ 160%
Japan	0	0.0%	0	0.0%	26	0.1%	193	0.9%	546	5.6%	+++
Albania	0	0.0%	1 554	8.0%	824	4.8%	1 326	5.9%	425	4.3%	+++
For.JRep.Mac	86	0.6%	0	0.0%	4	0.0%	674	3.0%	195	2.0%	+++
Others	7 794	57.2%	8 108	42.0%	2 930	17.1%	2 733	12.2%	527	5.4%	
Extra-EU	13 632		19 304		17 140		22 341		9 795		
% change			+ 42%		- 11%		+ 30%		+ 172.5%		

EU Egg Imports

**Total EU Import of Eggs - not incl. Hatching eggs
(Tonnes eggs equiv)**



**Total EU Import of Eggs - not incl. Hatching eggs
(1000 EUR)**

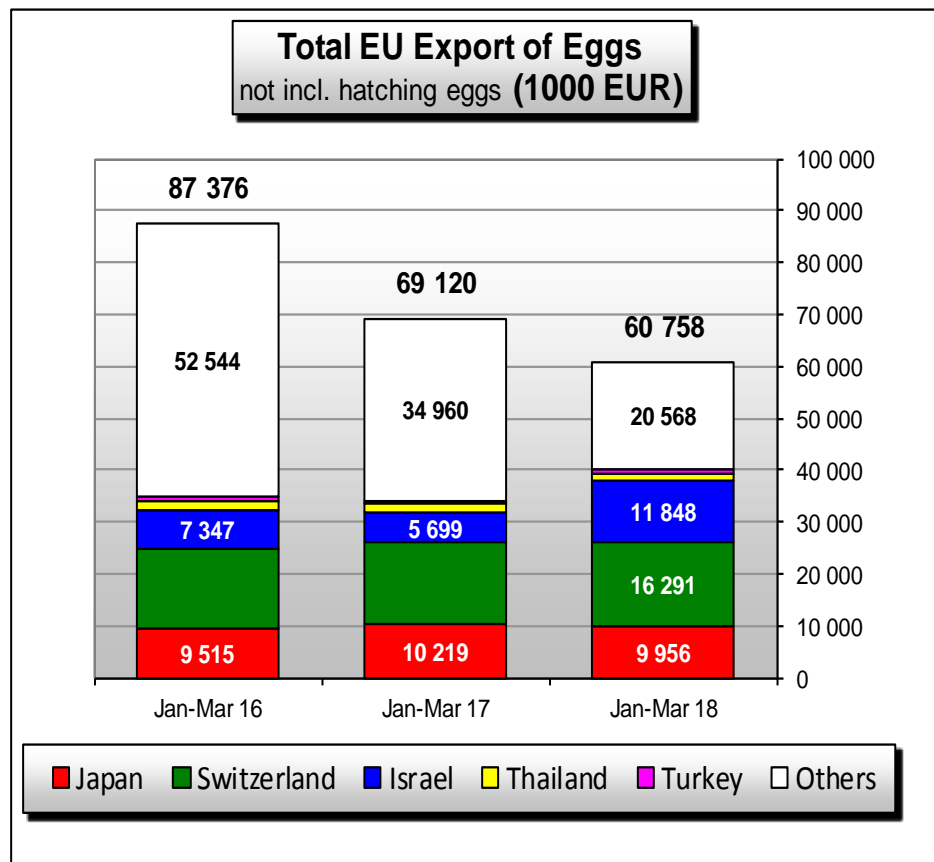
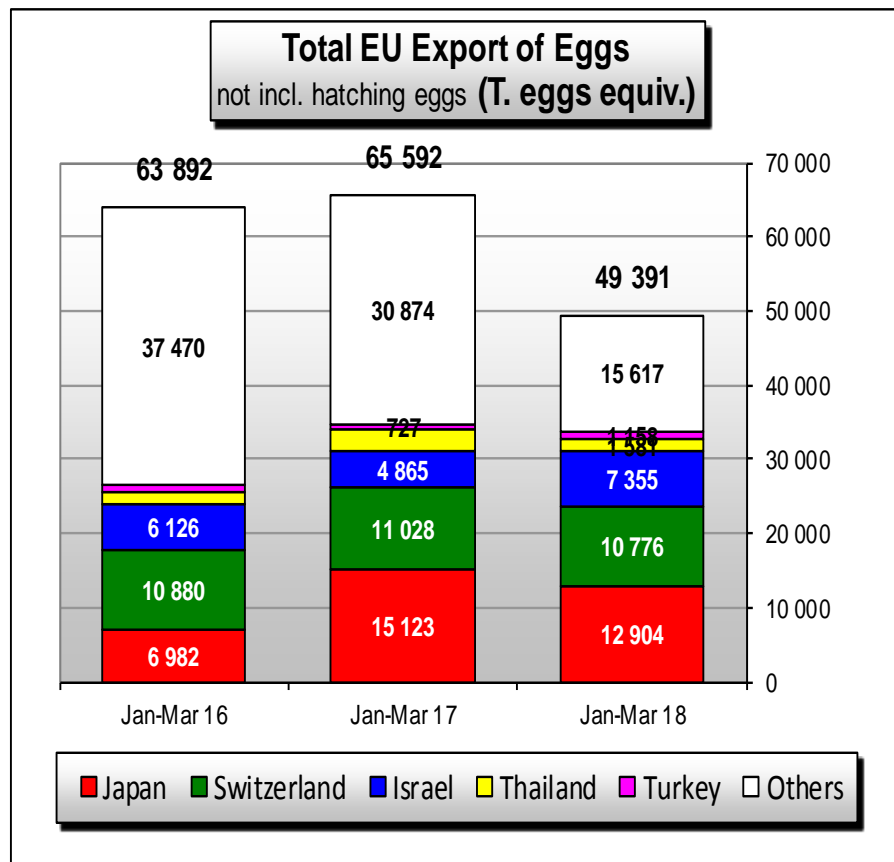


EU Exports of Eggs:

Trade Figures (*Comext – tonnes egg equiv.*) not incl. Hatching eggs

	2014		2015		2016		2017		Jan-Mar 18		Compared to Jan-Mar 17
	tonnes	%	tonnes	%	tonnes	%	tonnes	%	tonnes	%	
Japan	78 765	34%	73 487	26%	46 086	19%	53 211	25%	12 904	26%	- 14.7%
Switzerland	41 483	18%	41 257	15%	40 402	16%	40 665	19%	10 776	22%	- 2%
Israel	3 532	2%	11 750	4%	12 553	5%	10 719	5%	7 355	15%	+ 51%
Thailand	4 939	2%	5 147	2%	5 728	2%	10 046	5%	1 581	3%	- 47%
Turkey	1 639	1%	1 651	1%	2 972	1%	4 314	2%	1 158	2%	+ 59%
Taiwan	3 445	1%	4 082	1%	6 483	3%	7 340	4%	1 052	2%	- 51%
South Korea	2 661	1%	3 455	1%	5 162	2%	7 908	4%	759	2%	- 70%
Gambia	2 647	1%	2 527	1%	2 963	1%	2 396	1%	732	1%	- 32%
Malaysia	1 874	1%	2 987	1%	3 295	1%	2 225	1%	717	1%	+ 13%
Ukraine	2 146	1%	1 880	1%	2 885	1%	2 171	1%	672	1%	+ 20%
Russia	7 659	3%	3 854	1%	5 278	2%	4 932	2%	653	1%	- 54%
Others	82 053	35%	128 381	46%	112 670	46%	63 619	30%	11 034	22%	
Extra-EU	232 843		280 458		246 477		209 546		49 391		
% change			+ 20%		- 12%		- 15%		- 24.7%		

EU Egg Exports



EU Exports of hatching eggs

Trade figures (Comext - tonnes egg equivalent)

	2015		2016		2017		Jan-Mar18		Compared to Jan-Mar17
	Tonnes	%	Tonnes	%	Tonnes	%	Tonnes	%	
Russia	43 431	51%	37 599	46%	33 427	39%	8 712	42%	- 6.5%
Iraq	9 384	11%	12 925	16%	16 900	20%	3 198	15%	- 21.8%
Libya	4 672	6%	5 468	7%	4 543	5%	1 611	8%	- 8.3%
Ukraine	8 257	10%	4 281	5%	5 430	6%	1 044	5%	+ 61.7%
Switzerland	2 912	3%	2 786	3%	2 565	3%	704	3%	+ 7.7%
Belarus	557	1%	899	1%	1 677	2%	578	3%	+ 159.1%
U.A.Emirates	861	1%	1 918	2%	2 199	3%	509	2%	- 14.8%
Others	14 606	17%	15 320	19%	18 288	22%	4 588	22%	+ 5.4%
Extra-EU	84 680		81 196		85 029		20 943		
% change Year / Year-1	+ 11.7%		- 4.1%		+ 4.7%		- 3.2%		

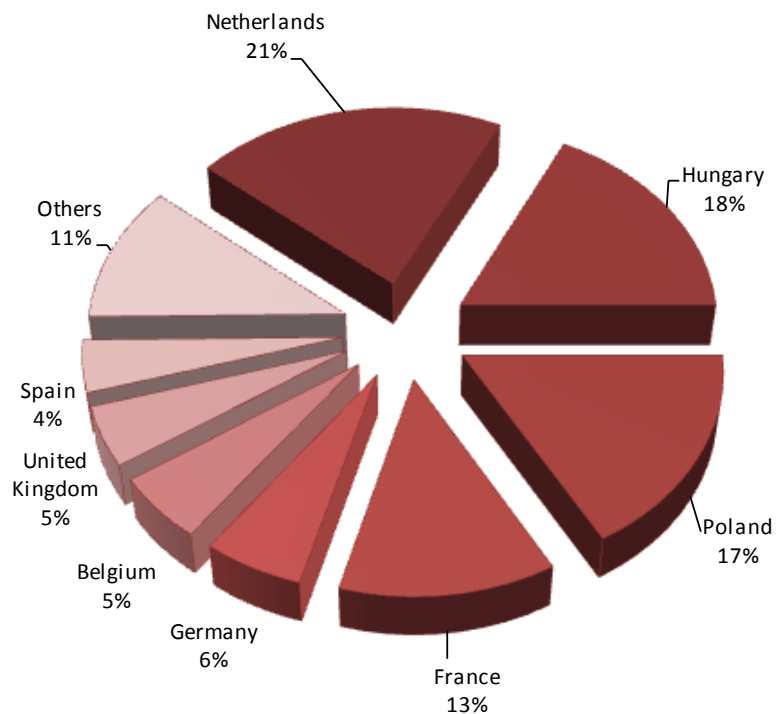
EU Exports of one day chicks

Trade figures (Comext - tonnes)

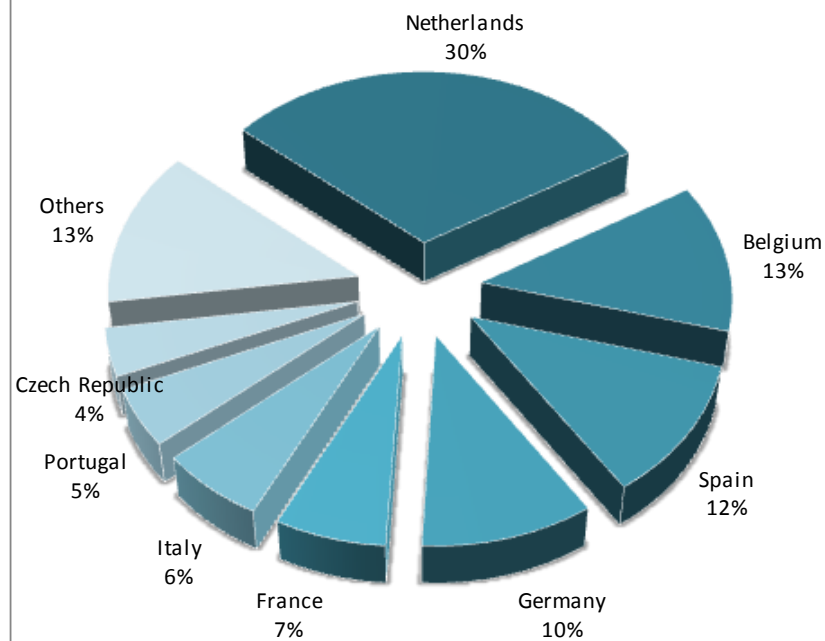
	2015		2016		2017		Jan-Mar18		Compared to Jan-Mar17
	Tonnes	%	Tonnes	%	Tonnes	%	Tonnes	%	
Ukraine	3 708	36%	3 058	32%	2 936	34%	784	35%	+ 9.0%
Russia	624	6%	577	6%	526	6%	150	7%	+ 25.8%
Egypt	1 401	14%	525	5%	486	6%	115	5%	- 34.5%
Belarus	558	5%	676	7%	337	4%	108	5%	+ 78.6%
Serbia	343	3%	333	3%	358	4%	94	4%	+ 9.9%
Morocco	349	3%	483	5%	315	4%	80	4%	- 10.3%
Albania	253	2%	264	3%	263	3%	78	4%	+ 37.3%
Ghana	173	2%	206	2%	309	4%	75	3%	- 10.8%
Philippines	95	1%	319	3%	121	1%	74	3%	+ 23.8%
Algeria	296	3%	309	3%	208	2%	56	3%	- 0.2%
Moldova	469	5%	169	2%	182	2%	45	2%	- 8.7%
Others	2 095	20%	2 735	28%	2 583	30%	575	26%	+ 17.9%
Extra-EU	10 363		9 653		8 625		2 235		
% change Year / Year-1			- 6.9%		- 10.7%		+ 9.4%		

Year 2017 – Quantities in tonnes

EU export of one day chicks



EU export of hatching eggs



Where to find data:

- http://ec.europa.eu/agriculture/markets/index_en.htm
- Click on link: Eggs
- Click on link: Presentations and prices
(righthand side under: in this chapter)
- Choose the item (link) you want