



TRACES

electronic transmission of certificates plant health interceptions reporting

Dr Hélène KLEIN

helene.klein@ec.europa.eu

Head of Sector TRACES-IMSOC

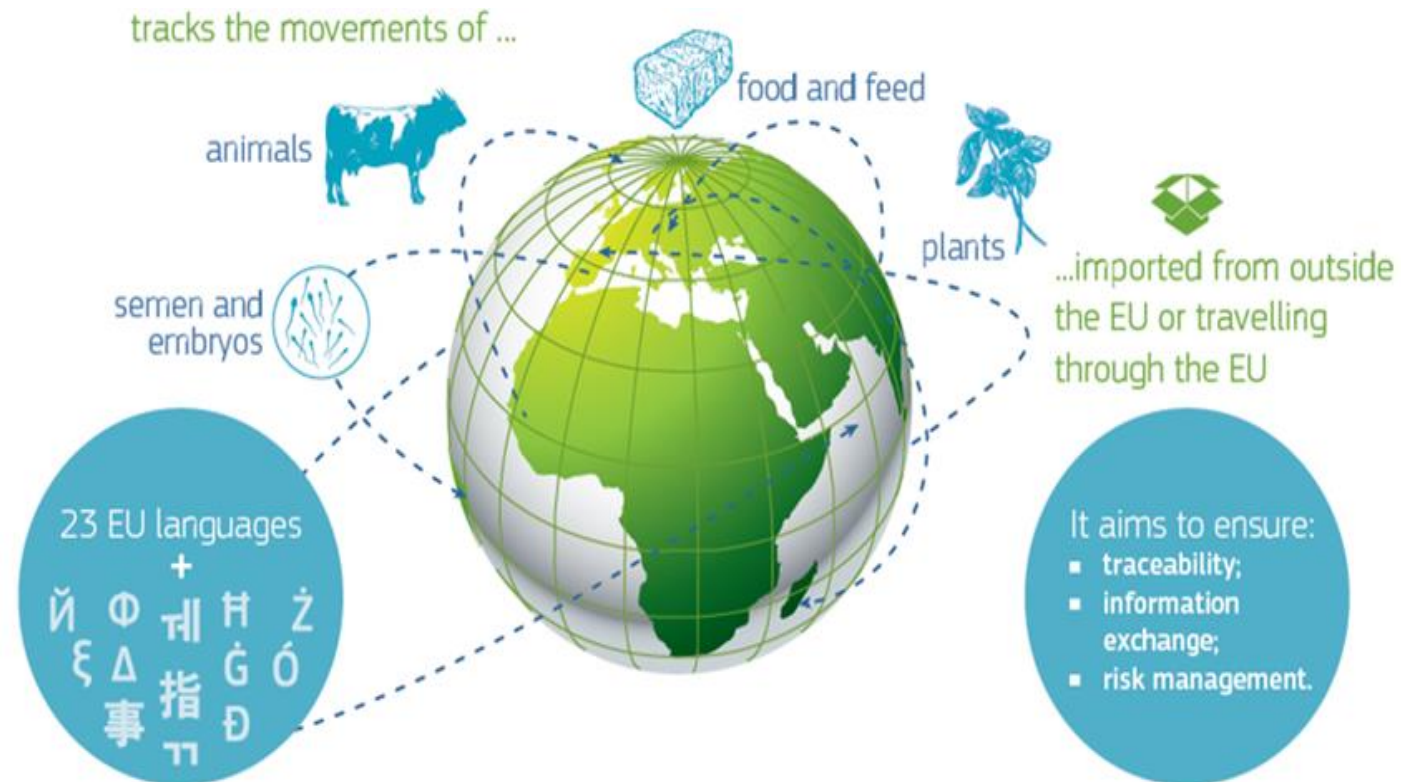
DG SANTE - Unit G.3- Official Controls

**Civil Dialogue Group Fruit & Vegetables
25 September 2020**

What is TRACES?

TRACES is the European Commission's online platform for sanitary and phytosanitary certification required or used for:

- the importation of animals, animal products, food and feed of non-animal origin and plants into the European Union;
- the intra-EU trade in live animals and certain animal products.
- EU exports of live animals, certain animal products and plants





European
Commission

TRACES – DG SANTE policy areas covered



ANIMAL AND VETERINARY PUBLIC HEALTH



Products of animal origin

such as:

- meat and edible meat offal, etc.;
- fish fillets and dried/smoked fish;
- milk and dairy products.



Animal by- products

such as:

- pet food and feed;
- fertilisers and soil improvers;
- game trophies.



Animals

Animal welfare

such as:

- bovine;
- ovine;
- caprine.
- live fish;
- mammals;
- birds.



PUBLIC HEALTH

Food of non-animal origin

such as:

- peppers;
- nuts;
- cereals.



PLANT HEALTH

such as:

- hyacinth, narcissi and tulips;
- roses;
- potatoes.



European
Commission

TRACES main characteristics

FREE OF CHARGE

WEB BASED

- All is accessible via Internet. No software installation needed

CENTRALIZED

- Developed and maintained by DG SANTE

PRIVATE-PUBLIC COLLABORATION

- Allows private and public sector to exchange and produce official documents

REDUCTION OF ADMINISTRATIVE WORKLOAD

- All actors in one system, with a user-friendly interface and a guided process

INTEROPERABILITY

- Exchanges with other systems (customs, iRASFF, other countries' certification systems, IPPC ePhyto hub)

MULTI-LINGUAL

- 23 EU languages + other non EU languages

ADVANCED STATISTICS

- Provides real-time consolidated statistical information using the data in the system

LEGALLY SOUND

- Gives access to the latest legally valid model of documents

FREE OF CHARGE

TRACES – available modules

DG SANTE policy areas

- Common Health Entry Documents (**CHED-A/P/PP/D**)
- Official certificate to EU (**EU IMPORT**)
- Phytosanitary certificate for import (**PHYTO and IPPC ePHYTO**)
- **Plant Health Interception** notifications
- Modules still used in the old TRACES platform: **INTRA, DOCOM, EXPORT**

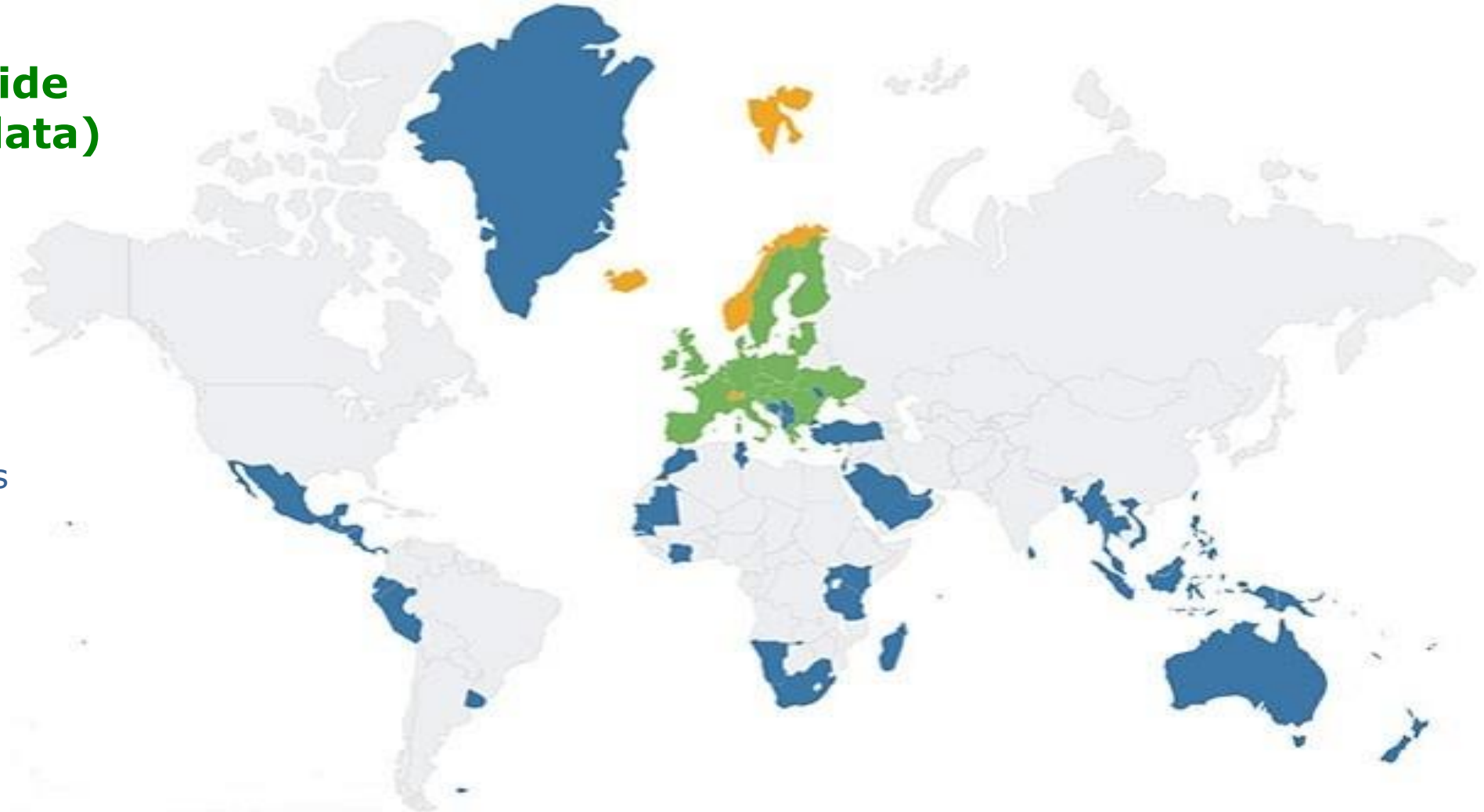
Other DGs

- DG AGRI - Certificate of Inspection for import of organic products into the EU (**COI**)
- DG ENV - Licence for Forest Law Enforcement, Governance and Trade (**FLEGT**)
- DG MARE - Certificate of inspection for import of illegal, unreported or unregulated fish catches (**CATCH**)

TRACES worldwide presence (2019 data)

91 countries and overseas
territories worldwide use
TRACES:

- 27 EU countries + UK
- 4 EFTA countries
- 59 non-EU countries

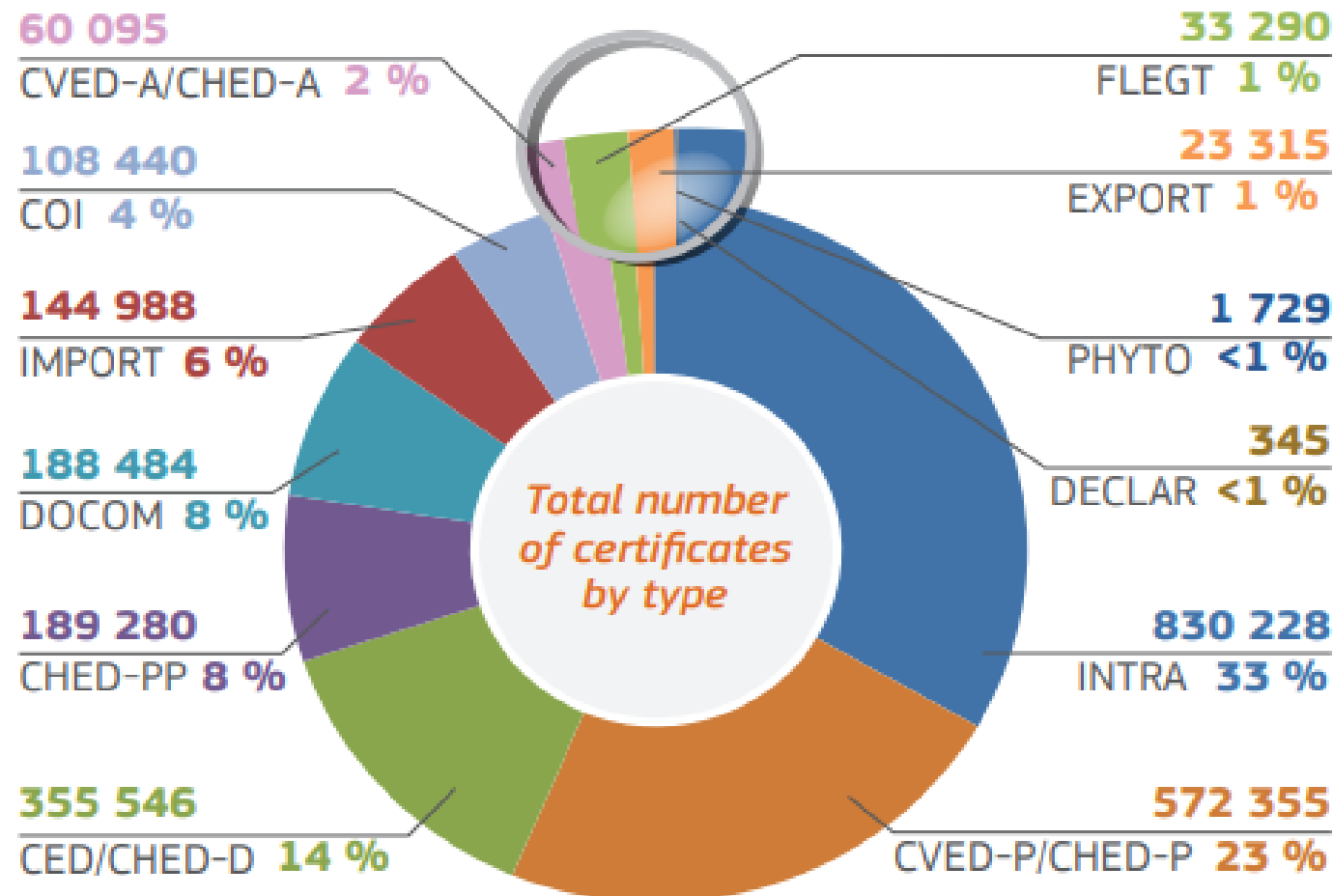


TRACES overview in figures - 2019



European
Commission

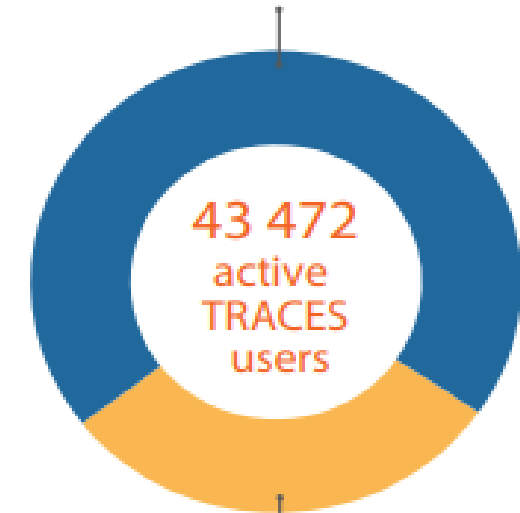
Total number of certificates in TRACES: **2 343 941**



TRACES users by type



65 %
from competent
authorities



35 %
from private
sector

Legal basis as of 14 December 2019

- **Regulation (EU) 2017/625** (Official Controls Regulation) - TRACES is integrated as one of the components of the Information Management System for Official Controls (IMSOC);
- **Implementing Regulation (EU) 2019/1715 (IMSOC Regulation)** - rules for the functioning of the IMSOC and its system components;
- Use of TRACES has become **mandatory** for issuing the Common Health Entry Document for animals and goods entering the Union (CHED);
- Section 4 of Chapter 3 of the IMSOC Regulation lays down the rules for the functioning of TRACES, the format of the CHED and the requirements with regard to the issuance of electronic official certificates and use of electronic signatures.

Common Health Entry Document (CHED)

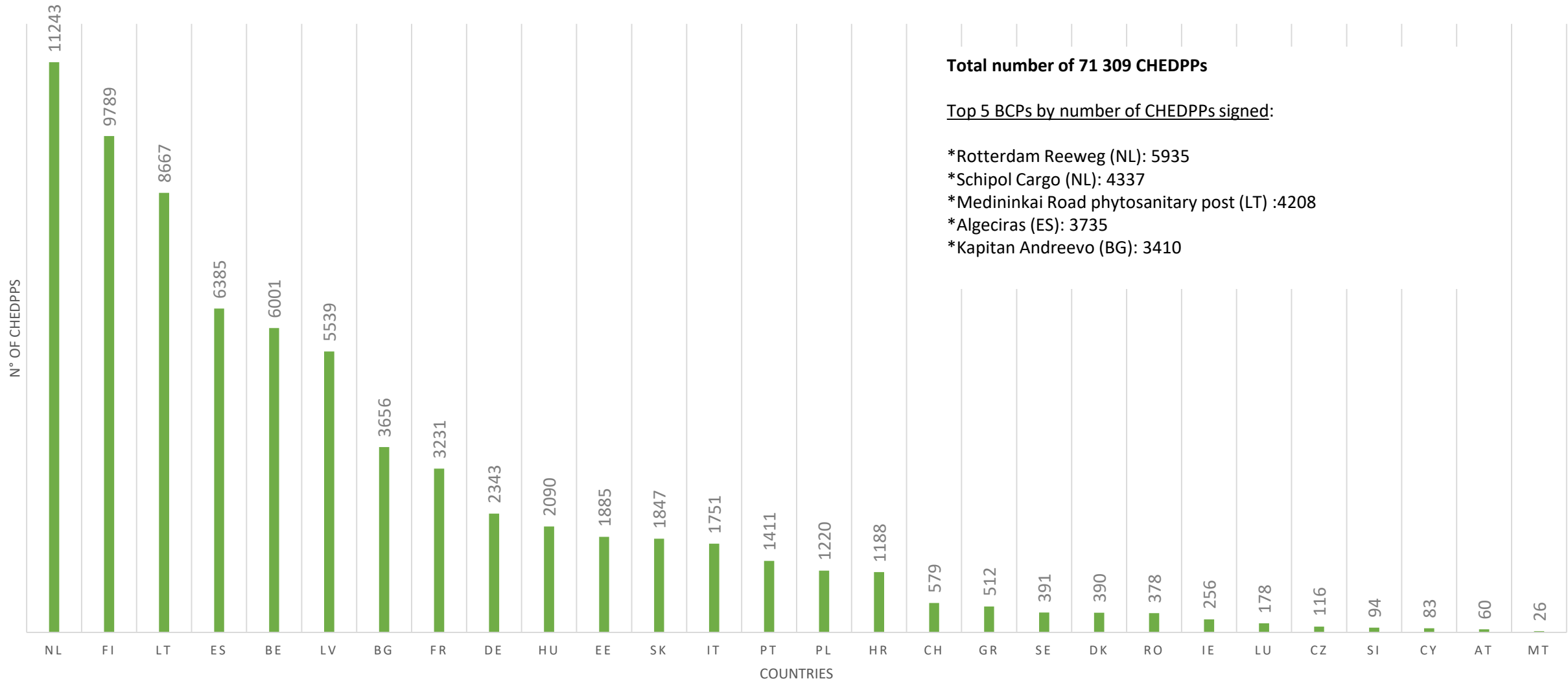


- Mandatory use in TRACES by Member States
- Purposes of a CHED
 - To give prior notification to the competent authority of the BCP that a consignment is arriving (PART I)
 - To record the outcome of the official controls performed and the decision taken on the consignment (PART II)
 - To give a Follow-up after the decision on the consignment has been taken (PART III)
- Four types of CHED
 - CHED-A: for consignments of live animals
 - CHED-P: for consignments of products of animal origin, germinal products and animal by-products
 - CHED-PP: for consignments of plants and plant products
 - CHED-D: for consignments of food and feed of non-animal origin

CHED-PP



NUMBER OF CHEDPPS BY MS AUGUST 2020



eSignature enrolment in Member States' authorities - 15 September 2020



N: not started – **S:** contacted – **O:** Ongoing – **R:** Ready to operate – **U:** eSignature Used

	A T	B E	B G	C Z	D K	D E	E E	IE	EL	E S	F I	F R	H R	I T	C Y	L V	LT	L U	H U	M T	N L	P L	P T	R O	SI	S E	S K	N O
CHE D-A	S	U	S	N	O	O	U	R	S	U	R	U	N	S	S	U	R	U	N	O	U	S	S	S	R	R	O	N
CHE D-P	S	U	S	N	O	O	U	R	S	U	R	U	N	S	S	U	R	U	N	O	R	S	S	S	U	U	O	N
CHE D-D	S	U	S	N	O	O	U	R	S	U	R	U	N	S	S	U	U	U	N	O	U	U	S	S	U	U	O	N
CHE D-PP	U	U	S	N	S	U	U	R	S	U	U	U	O	O	S	U	O	U	S	O	U	U	S	S	U	U	S	N
COI	O	U	S	O	R	O	R	R	U	O	R	U	O	O	O	R	R	R	R	O	O	O	R	O	R	U	O	U



PHYTO

- Used on a voluntary basis by non-EU countries to issue the **Phytosanitary certificate to the EU**;
- **Interactively in TRACES** since early 2018;
- Electronic capacity available;
- More than 4700 phyto certificates recorded since its deployment;
- 5 French overseas territories using it since 14 Dec. 2019 (close to 100% in electronic format);
- Tunisia using it since April 2020 (electronic capacity in progress).

IPPC ePhyto

- Connection to the **IPPC e-Phyto Hub** established on 12 May 2020 which allows the exchange of data between TRACES and non-EU countries through the Hub;
- Argentina, USA, Morocco, Costa Rica, Chile, Mexico, Fiji, Samoa, Jamaica;
- More than 50000 e-phytos (data exchange not yet signed-NZ and Morocco most advanced).

EXPORT

ELECTRONIC PHYTOSANITARY CERTIFICATES - Art 39 IMSOC Reg.



1. Electronic official certificates for consignments of animals and goods entering the Union shall meet all of the following requirements:
 - (a) they shall be issued in one of the following systems:
 - (i) TRACES;**
 - (ii) *a Member State's national system;*
 - (iii) a third country or an international organisation's electronic certification system that is capable of exchanging data with TRACES;**
 - (iv) *a third country or an international organisation's electronic certification system that is capable of exchanging data with a Member State's national system;*
 - (b) they shall be signed by an authorised officer with an advanced or qualified electronic signature;
 - (c) they shall bear the advanced or qualified electronic seal of the issuing competent authority, or the advanced or qualified electronic signature of its legal representative;
 - (d) they shall use a qualified electronic time stamp.

COVID REGULATION - 2020/466 (2020/714, 2020/1087)



European
Commission

Article 4(1)

1. Official controls and other official activities on official certificates and official attestations may exceptionally be performed:
 - (a) on a copy of the original of such certificates or attestations, that is made available electronically, provided the person responsible for presenting the official certificate or official attestation presents to the competent authority a statement affirming that the original of the official certificate or official attestation will be submitted as soon as technically feasible; or
 - (b) on electronic data from such certificates or attestations, where such data has been produced and submitted by the competent authority in TRACES.

As a temporary measure, the original paper certificate is not required for:

Martinique, Guyane, Guadeloupe, Mayotte, Reunion (if e-signature not used)

Tunisia

Argentina, USA, Morocco, Costa Rica, Chile, Mexico, Fiji, Samoa, Jamaica

As a permanent measure, the electronic phytosanitary certificate produced in TRACES replaces the original paper certificate for:

Martinique, Guyane, Guadeloupe, Mayotte, Reunion

INTEGRATION OF EUROPHYT-*interceptions* in TRACES



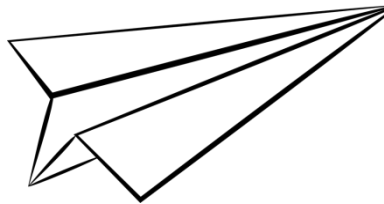
- Europhyt-*interceptions* was created in 1995, as an implementation of Directive 94/3/EC establishing a procedure for the notification of interceptions of plants or harmful organisms from non-EU countries;
- IMSOC Reg. provides that TRACES should be used by BCP officers to notify MS' PH authorities and COM of interceptions detected at EU border and that the ENCP should inform non-EU countries concerned and EPPO. It also provides that TRACES should be used by the ENCP to notify internal interceptions;
- Available as a new "Plant interceptions" module of TRACES-NT since May 2020;
- Since 12 June 2020, **all plant interceptions are recorded in TRACES** (more than **1200** so far);
- Monthly reporting published at https://ec.europa.eu/food/plant/plant_health_biosecurity/europhyt/interceptions_en;
- Discontinuation of the email interception notification procedure of non-EU countries in favour of an access to notifications in TRACES.

Useful links

- [TRACES New Technology \(NT\)](#) - the new TRACES platform;
- [TRACES – Europa website page](#) – additional information about TRACES;
- [TRACES Documentation website](#) – the portal to access the user's manuals;
- [TRACES Toolkit](#) – additional documentation and material about TRACES web services.

TRACES- IMSOC

Thank you!



sante-traces@ec.europa.eu

Tel.: +32 2 297 63 50



European
Commission