



European
Commission

June 2021

Statistical Factsheet

Slovakia



CONTENTS

Main figures	1
1. KEY DATA	2
2. POPULATION & ECONOMY	3-4
3. FINANCIAL ASPECTS	5-6
4. ECONOMIC ACCOUNTS	7-13
5. AGRICULTURAL TRADE	14-15
6. FARM STRUCTURE	16-18

Main figures - Year 2020

Population (1 st January)	5 457 873	persons
Area*	49 035	km ²
Currency	EUR	euro
Nominal GDP at current prices	91 555	million EUR
GDP per capita at current prices	16 424	EUR
GDP per capita at purchasing power	22 000	PPS
Harmonised index of consumer prices	2.0%	change over previous year
Unemployment rate	6.9	% of labour force
Exports (goods & services)	75 116	million EUR (current prices)
Imports (goods & services)	75 709	million EUR (current prices)
Balance (goods & services)	- 593	million EUR (current prices)
Exports of agricultural products	3 131	million EUR (current prices)
Imports of agricultural products	4 831	million EUR (current prices)
Current account balance	-4.2	% of GDP
General government balance	-9.6	% of GDP
General government gross debt	63.4	% of GDP

Sources: European Commission, Eurostat (Online Data Table: [urt_d3area](#), [urt_pjanaggr3](#)), and Directorate General for Economic and Financial Affairs.

*Data refer to the year 2016

(e) Estimation

Updated: June 2021

1. KEY DATA

Macroeconomics				
Population				
Total population (number of persons), of which:	2020	5 457 873	1.2%	of EU27_2020
in predominantly rural regions	2020	37.3%	20.8%	in EU27_2020
in intermediate regions	2020	50.4%	38.9%	in EU27_2020
in predominantly urban regions	2020	12.3%	40.3%	in EU27_2020
Population in Predominantly rural regions (Persons)	2020	2 036 437	2.2%	of EU27_2020
GDP (current basic prices)				
Total (million EUR)	2020	91 555	0.7%	of EU27_2020
GDP per capita (EUR/person)	2020	16 424	29 355	in EU27_2020
GDP per capita (PPS/person)	2020	22 000	29 700	in EU27_2020
Real GDP growth rate (% change over previous year)	2020	-7.5%	-7.4%	in EU27_2020
Gross value added				
Agriculture, forestry and fishing (% of total GVA)	2020	2.8%	1.9%	in EU27_2020
Financial aspects				
Common Agricultural Policy expenditure				
Total expenditure (million EUR), of which:	2020	674	1.2%	of EU27_2020
Direct payments (%)	2020	66.5%	69.9%	in EU27_2020
Market measures (%)	2020	1.7%	4.6%	in EU27_2020
Rural development (%)	2020	31.9%	25.5%	in EU27_2020
Economic accounts of agriculture				
Agricultural output (current basic prices)				
Agricultural output (million EUR), of which:	2020 (e)	2 180	0.5%	of EU27_2020
Crop output, of which:		58.9%	0.6%	of EU27_2020
Cereals (including seeds)		28.2%	1.3%	of EU27_2020
Industrial crops		14.4%	1.7%	of EU27_2020
Forage plants		7.4%	0.6%	of EU27_2020
Vegetables and horticultural products		4.5%	0.2%	of EU27_2020
Potatoes		2.1%	0.4%	of EU27_2020
Fruits		2.0%	0.1%	of EU27_2020
Wine		0.0%	0.0%	of EU27_2020
Olive oil		0.0%	0.0%	of EU27_2020
Animal output, of which:		34.8%	0.5%	of EU27_2020
Cattle		4.9%	0.4%	of EU27_2020
Pigs		7.1%	0.4%	of EU27_2020
Sheep and goats		0.5%	0.3%	of EU27_2020
Poultry		4.4%	0.5%	of EU27_2020
Milk		13.4%	0.5%	of EU27_2020
Eggs		3.5%	0.8%	of EU27_2020
Gross value added at current prices (million EUR)	2020 (e)	577	0.3%	of EU27_2020
Agricultural input (current basic prices)				
Total intermediate consumption (million EUR)	2020 (e)	1 752	0.7%	of EU27_2020
Agricultural income (real prices)				
Agricultural Income*(% change over previous year, 2010=100)	2020 (e)	2.3%	-1.2%	in EU27_2020
Farm structure				
Holdings				
Total (No), of which:	2016	25 660	0.2%	of EU27_2020
UAA < 5 ha (%)	2016	55.7%	66.6%	in EU27_2020
Economic size < 4 000 €	2016	52.6%	54.9%	in EU27_2020
Holder < 35 years (%)	2016	11.1%	5.1%	in EU27_2020
Holder > 64 years (%)	2016	20.3%	32.8%	in EU27_2020
UAA per holding (ha)	2016	73.6	15.2	in EU27_2020
Labour force				
AWU (No)	2016	47 190	0.5%	of EU27_2020
Female farm holders (%)	2016	19.9%	30.7%	in EU27_2020
Male farm holders (%)	2016	80.1%	68.8%	in EU27_2020
Agriculture in % of total employment	2020	2.6%	4.0%	in EU27_2020

Sources: European Commission(Ameco), Eurostat(Online Data Table: urt_pjanaggr3, aact_eaa01, ef_m_farmleg, ef_m_farmang, ef_if_main, lfsa_egan2) and Directorate General for Agriculture and Rural Development.

*Indicator A- See definition at page 10

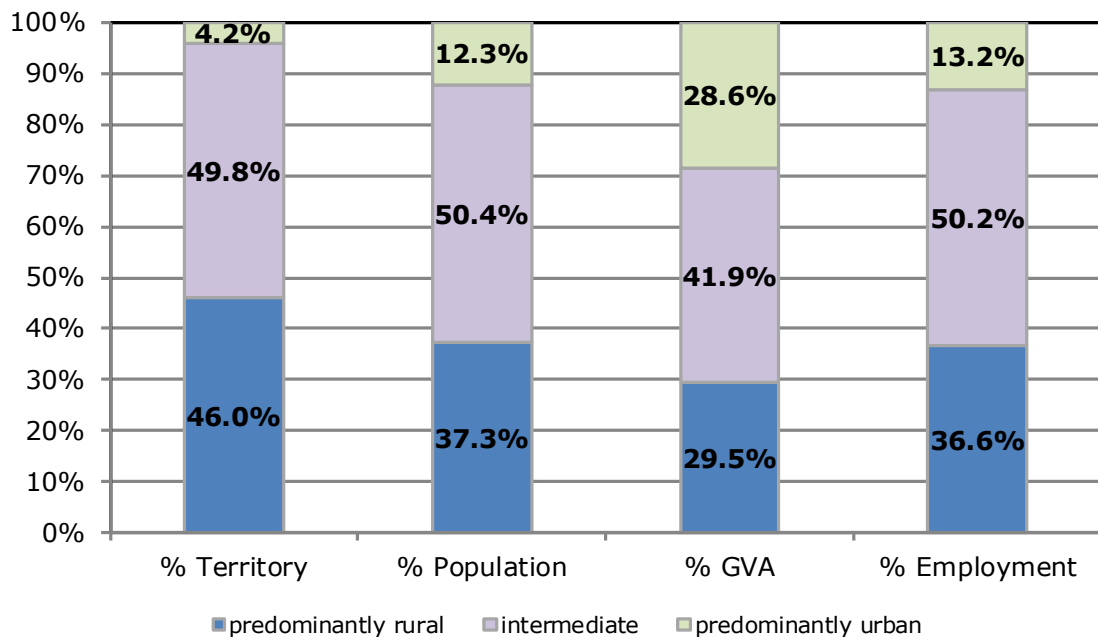
2. POPULATION AND ECONOMY

Importance of rural areas

	Territory (km ²)	Population (persons)	GVA (Million EUR)	Employment (persons)
Year	2016	2020	2018	2019
Predominantly Rural Regions	22 573	2 036 437	23 647	931 200
Intermediate Regions	24 409	2 751 844	33 591	1 276 600
Predominantly Urban Regions	2 053	669 592	22 979	336 000
Total	49 035	5 457 873	80 217	2 543 800

Source: Eurostat (Online Data Table: urt_d3area, urt_pjanagr3, urt_10r_3gva, urt_lfe3emp)

Updated: June 2021



Degree of urbanisation	Share of land (%)	Share of population (%)
	2018	2018
Rural areas	83.2%	41.4%
Towns and suburbs	14.5%	38.2%
Cities	2.3%	20.5%

Source: Eurostat, GISCO

*Based on 2011 population grid, LAU 2018 delineation and NUTS 2016.

2. POPULATION AND ECONOMY

Economic forecast

Indicators	2013	2014	2015	2016	2017	2018	2019	2020	2021(f)	2022(f)
GDP										
In million EUR (current prices)	74 449	76 270	79 768	81 052	84 489	89 357	93 900	91 555	97 408	104 860
Per capita (in PPS; current prices)	20 200	20 800	21 500	20 600	21 100	22 100	22 800	22 000	23 400	24 900
% change over previous period										
GDP growth at constant prices (2015=100)	0.7%	2.6%	4.8%	2.1%	3.0%	3.8%	2.3%	-7.5%	4.7%	4.3%
GDP deflator (2015=100)	0.5%	-0.2%	-0.2%	-0.5%	1.2%	2.0%	2.5%	3.3%	0.6%	1.7%
Harmonised index of consumer prices	1.5%	-0.1%	-0.3%	-0.5%	1.4%	2.5%	2.8%	2.0%	0.7%	1.4%
Exports (goods and services)	6.0%	3.7%	6.6%	5.0%	3.6%	5.2%	0.8%	-11.4%	8.6%	4.4%
Imports (goods and services)	5.6%	4.5%	8.5%	4.8%	3.9%	4.9%	2.1%	-10.2%	6.8%	3.5%
Net exports of goods and services (million EUR)	4 166	3 674	2 453	2 390	1 868	1 692	370	- 593	807	1 635
% of total employment										
Unemployment rate	14.2	13.2	11.5	9.7	8.1	6.5	5.8	6.9	7.8	7.1
% of GDP										
Current account balance	1.9	1.1	-2.1	-2.7	-1.9	-2.2	-2.7	-4.2	-2.7	-2.7
General government balance	-2.9	-3.1	-2.7	-2.6	-0.9	-1.0	-1.4	-9.6	-7.9	-6.0
General government gross debt	54.6	53.5	51.9	52.4	51.7	49.9	48.5	63.4	65.7	67.6

Source: European Commission, Directorate General for Economic and Financial Affairs

Updated: June 2021

f: forecast

3.1. AGRICULTURE: FINANCIAL ASPECTS

CAP expenditure

Measures	2020		2020	
	1 000 EUR		% of total	% of heading
Decoupled direct aids	375 957		55.8%	84.0%
Other direct aids	65 913		9.8%	14.7%
Additional amounts of aid	0		0.0%	0.0%
Reimbursement of direct aids in relation to financial discipline	5 889		0.9%	1.3%
Direct payments (Total)	447 758		66.5%	100.0%
Olive oil	0		0.0%	0.0%
Textile plants	0		0.0%	0.0%
Fruit and vegetables	2 134		0.3%	19.0%
Wine sector	5 084		0.8%	45.2%
Promotion			0.0%	0.0%
Other plant products/measures			0.0%	0.0%
Milk and milk products			0.0%	0.0%
Beef and veal	0		0.0%	0.0%
Sheepmeat and goatmeat	0		0.0%	0.0%
Pigmeat, eggs, poultry and other	690		0.1%	6.1%
School schemes*	3 347		0.5%	29.7%
Market measures (Total)	11 255		1.7%	100%
Rural development (Total)	214 525		31.9%	100%
TOTAL	673 538		100.0%	

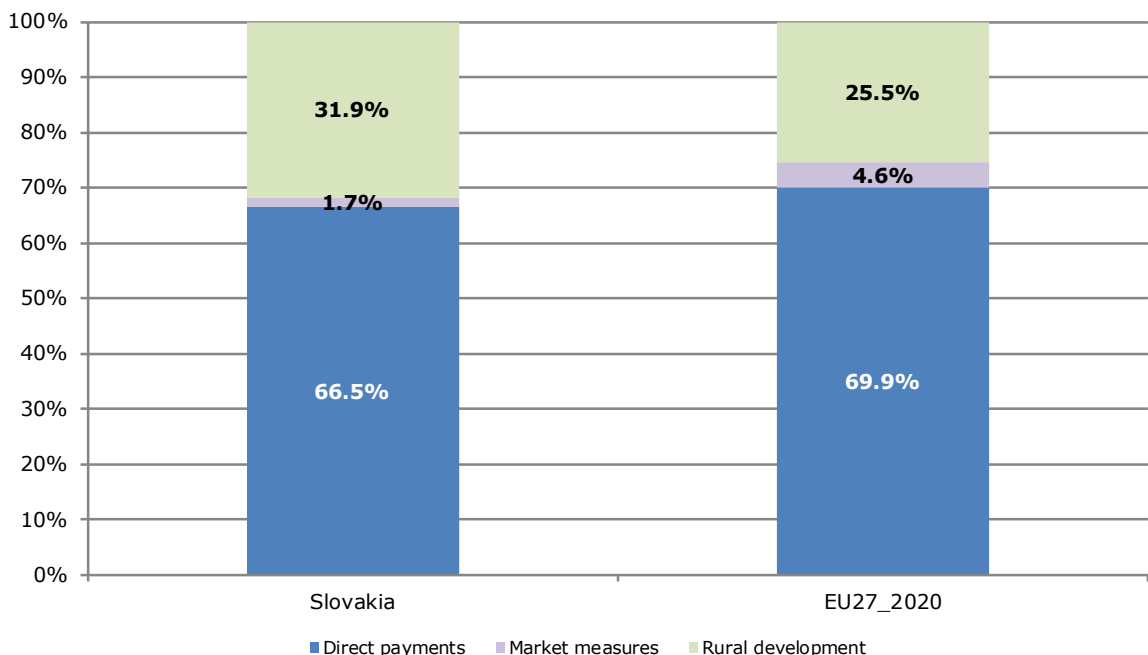
Note: Expenditure in commitments for direct payments and market measures; ceilings of support for rural development. Negative values represent beneficiaries that in total reimbursed money to the EAGF (recoveries, corrections, etc.)

* Programme implementation based on school years; reimbursement possible in the next financial year

Source: European Commission, Directorate General for Agriculture and Rural Development

Updated: June 2021

Distribution of CAP expenditure



3.2. AGRICULTURE: FINANCIAL ASPECTS

Distribution of direct aids to the producers

Size-class of aid (all direct payments)	Financial year 2019*			
	Beneficiaries		Payments in EUR	
	x 1 000	% of total	x 1 000	% of total
< 0 €	-	0.00%		0.0%
≥ 0 and < 500 €	3.50	18.81%	1 129	0.3%
≥ 500 and < 1 250 €	4.58	24.58%	3 774	0.8%
≥ 1 250 and < 2 000 €	2.25	12.08%	3 580	0.8%
≥ 2 000 and < 5 000 €	3.14	16.84%	9 752	2.2%
≥ 5 000 and < 10 000 €	1.56	8.36%	11 035	2.5%
≥ 10 000 and < 20 000 €	1.01	5.44%	14 187	3.2%
≥ 20 000 and < 50 000 €	0.94	5.07%	30 011	6.7%
≥ 50 000 and < 100 000 €	0.55	2.94%	39 127	8.8%
≥ 100 000 and < 150 000 €	0.26	1.41%	32 357	7.3%
≥ 150 000 and < 200 000 €	0.18	0.96%	31 437	7.1%
≥ 200 000 and < 250 000 €	0.15	0.78%	32 871	7.4%
≥ 250 000 and < 300 000 €	0.12	0.62%	31 848	7.2%
≥ 300 000 and < 500 000 €	0.24	1.28%	92 412	20.8%
≥ 500 000 €	0.15	0.81%	111 578	25.1%
Total	18.61	100%	445 098	100%

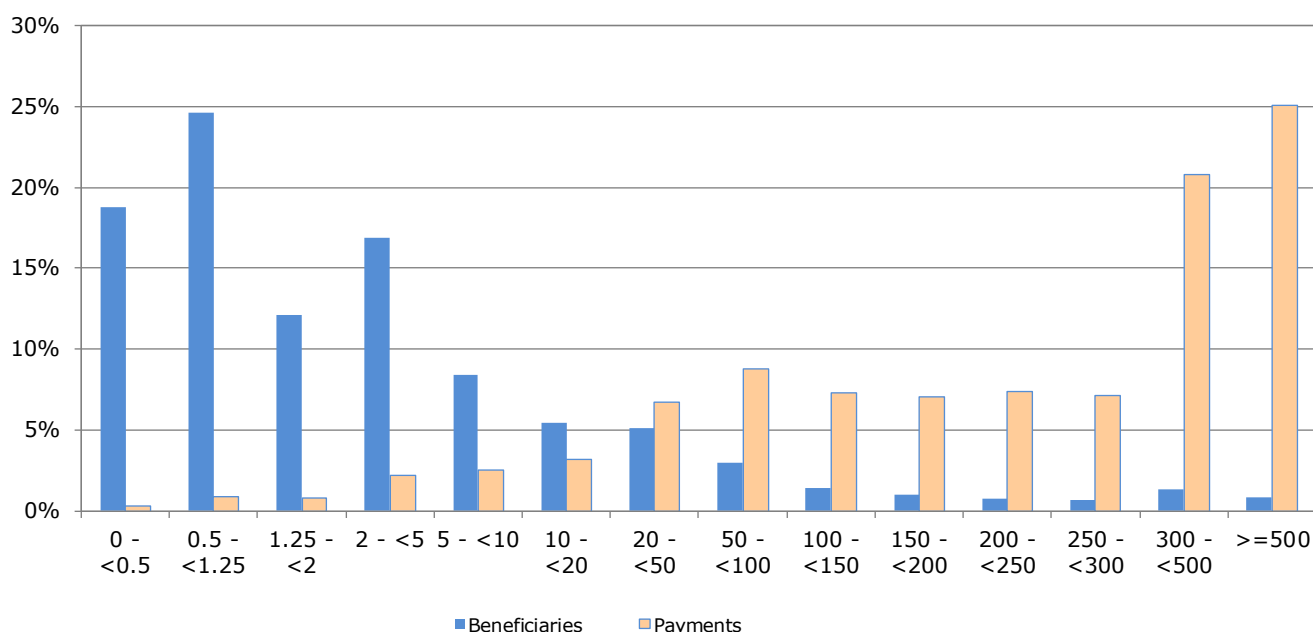
Source: European Commission, Directorate General for Agriculture and Rural Development.

* Figures for financial year 2020 will become available during the second half of 2021. Negative values represent beneficiaries that in total reimbursed money to the EAGF (recoveries, corrections, etc.)

Note: In order to protect the anonymity of the beneficiaries, numbers less than 10 have been made invisible in this table.

Updated: June 2021

Indicative figures on the distribution of direct aid by size-class of aid (1 000 EUR)



4.1. AGRICULTURE: ECONOMIC ACCOUNTS

Agricultural output

Output components (real prices)	2018	2019	2020 (e)		
	Million EUR		Million EUR	% of total	% of EU27_2020
Cereals:	544	537	547	30.0%	1.3%
Wheat and spelt	263	262	271	15%	1.4%
Rye and meslin	5	6	6	0%	0.5%
Barley	71	86	81	4%	1.1%
Oats and summer cereal mixtures	4	4	5	0%	0.3%
Grain maize	196	173	179	10%	1.9%
Rice		0	0	0%	0.0%
Other cereals	5	5	5	0%	0.3%
Industrial crops:	296	259	280	15.4%	1.7%
Oil seeds and oleaginous fruits	252	216	238	13%	2.6%
Protein crops	4	4	4	0%	0.4%
Raw tobacco		0	0	0%	0.0%
Sugar beet	39	39	37	2%	2.1%
Other industrial crops	1	1	1	0%	0.0%
Forage plants	159	127	143	7.8%	0.7%
Vegetables and horticultural products	79	93	87	4.8%	0.2%
Potatoes	37	53	41	2.2%	0.4%
Fruits	47	38	39	2.2%	0.1%
Wine		0	0	0%	0.0%
Olive oil		0	0	0%	0.0%
Other crop products	6	9	8	0%	0.4%
Crop output	1 167	1 116	1 146	62.9%	0.6%
Animals:	356	346	336	18.4%	0.4%
Cattle	120	101	96	5.2%	0.4%
Pigs	118	133	138	7.6%	0.4%
Equines	0	0	0	0.0%	0.0%
Sheep and goats	12	13	10	0.6%	0.3%
Poultry	100	91	86	4.7%	0.5%
Other animals	6	7	6	0.3%	0.3%
Animal products:	379	352	340	18.7%	0.6%
Milk	263	260	261	14.3%	0.5%
Eggs	94	81	68	3.7%	0.8%
Other animal products	23	11	11	0.6%	0.5%
Animal output	735	698	676	37.1%	0.5%
Agricultural goods output	1 903	1 814	1 822	100.0%	0.5%

(e) 2020 data are estimates and may still change.

Updated: June 2021

Source: Eurostat(Online Data Table: aact_eaa04), Economic Accounts for Agriculture (Production value at basic price).

4.2. AGRICULTURE: ECONOMIC ACCOUNTS

Agricultural input

Input components (real prices)	2018	2019	2020 (e)	2019/2018	2020 (e) /2019
	Million EUR			% Change	
Seeds and planting stock	96	95	95	-0.4%	0.2%
Energy	257	249	206	-3.0%	-17.4%
Fertilisers and soil improvers	123	132	135	8.0%	2.1%
Plant protection products	124	119	124	-4.3%	4.1%
Veterinary expenses	43	41	41	-4.0%	0.5%
Feedingstuffs	418	385	385	-7.9%	0.0%
Maintenance of materials	27	27	28	-1.5%	2.7%
Maintenance of buildings	50	49	49	-1.9%	-0.1%
Agricultural services	136	125	123	-7.7%	-2.3%
Other goods and services	389	369	367	-5.1%	-0.8%
Total intermediate consumption	1 678	1 603	1 562	-4.4%	-2.5%
Fixed capital consumption	181	200	219	10.7%	9.7%

(e) 2020 data are estimates and may still change.

Source: Eurostat(Online Data Table: aact_eaa04), Economic Accounts for Agriculture (Production value at basic price)

Updated: June 2021

Agricultural income

By category of product (real prices)	2018	2019	2020 (e)	2019/2018	2020 (e) /2019
	Million EUR			% Change	
Output of the agricultural "industry":	2 189	2 083	2 077	-4.8%	-0.3%
Crop output	1 167	1 116	1 146	-4.4%	2.6%
Animal output:	735	698	676	-5.1%	-3.2%
<i>Animals</i>	356	346	336	-2.9%	-2.8%
<i>Animal products</i>	379	352	340	-7.2%	-3.5%
Agricultural services	136	125	123	-7.7%	-2.3%
Secondary activities	150	144	133	-4.2%	-7.5%
- Intermediate consumption	1 678	1 603	1 562	-4.4%	-2.5%
= Gross value added at basic prices	511	480	515	-6.0%	7.2%
- Consumption of fixed capital	181	200	219	10.7%	9.7%
- Taxes	50	45	46	-8.7%	0.8%
+ Subsidies	520	552	514	6.2%	-6.9%
= Factor income	801	787	764	-1.7%	-3.0%
Agricultural income* (2010=100)	201.6	189.1	193.5	-6.2%	2.3%

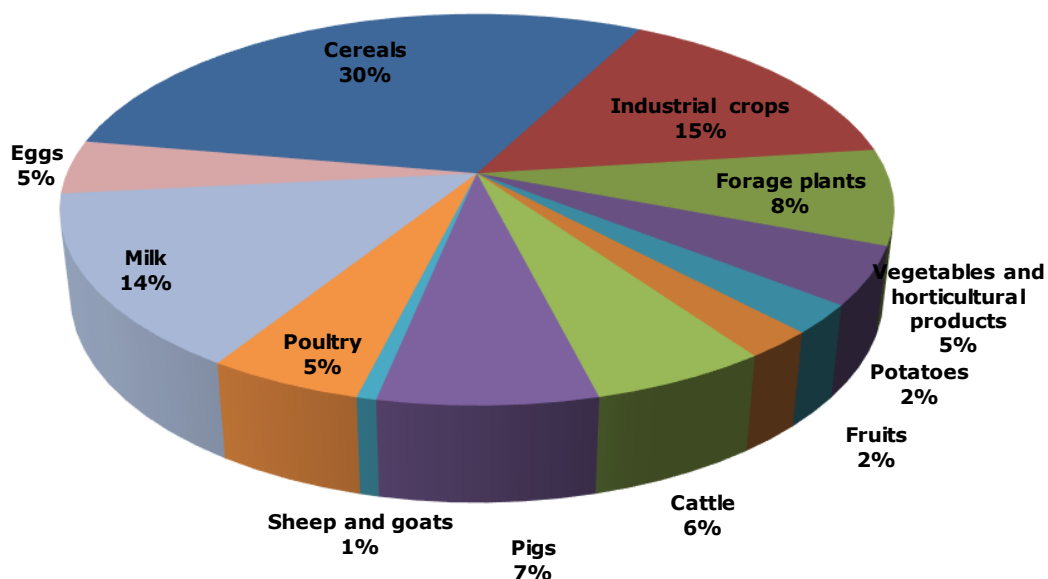
(e) 2020 data are estimates and may still change.

Updated: June 2021

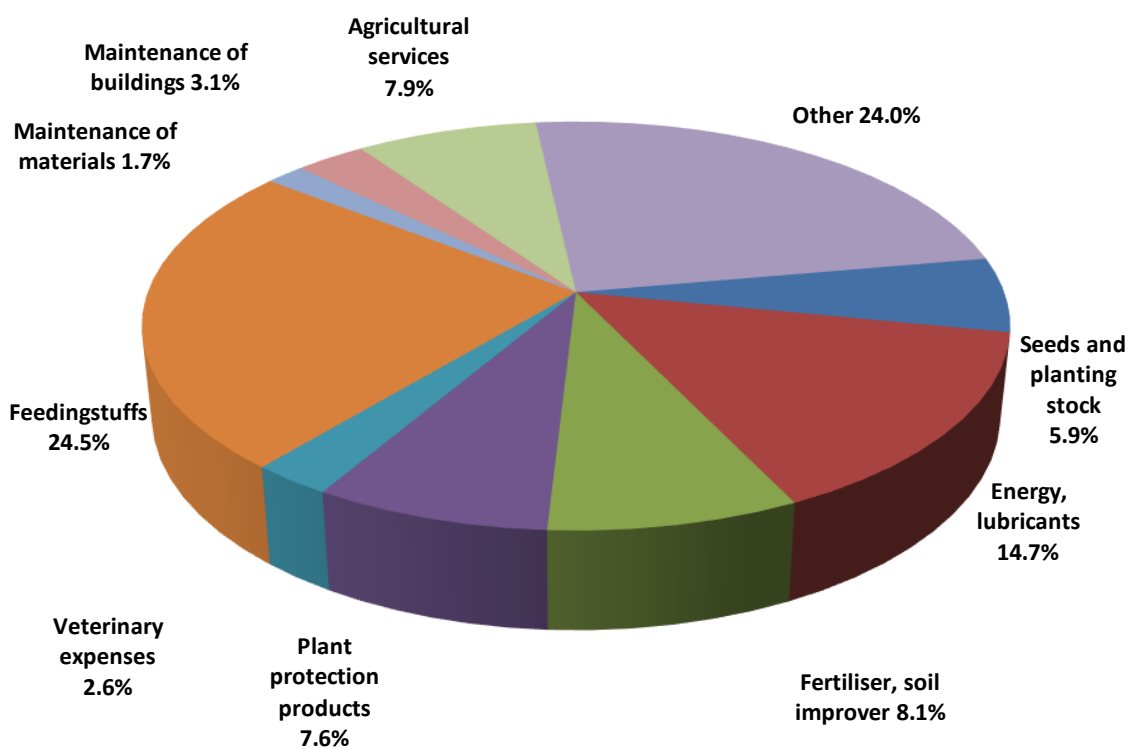
Source: Eurostat(Online Data Table: aact_eaa04 aact_eaa06), Economic Accounts for Agriculture (Production value at basic price, Real Values, Index, 2010=100)

4.3. AGRICULTURE: ECONOMIC ACCOUNTS

Output components (2018-2020 average)

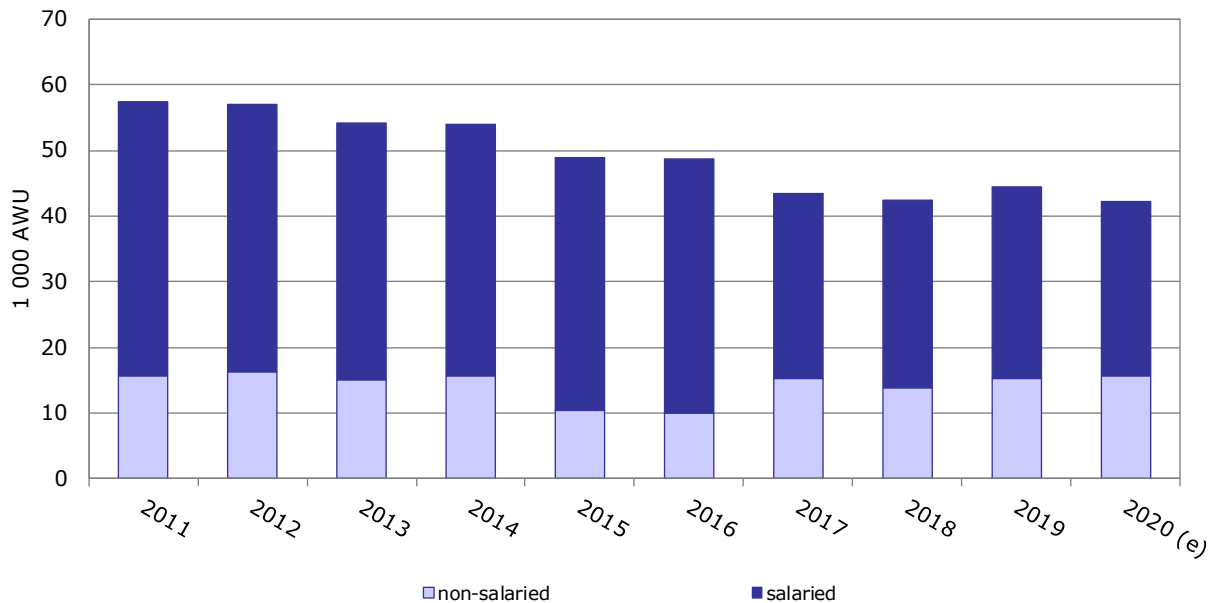


Intermediate consumption (2018-2020 average)



4.4. AGRICULTURE: ECONOMIC ACCOUNTS

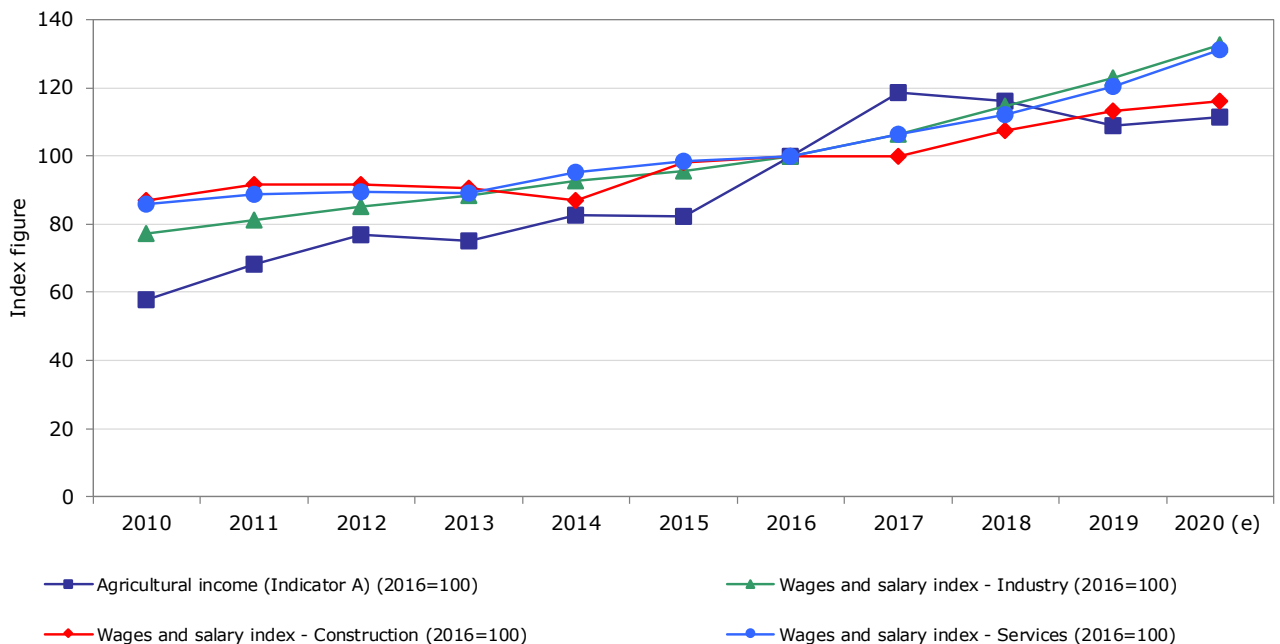
Evolution of agricultural labour input



Source: Eurostat(Online Data Table: aact_ali01)

Updated: June 2021

Evolution of agricultural income (*) compared to wages

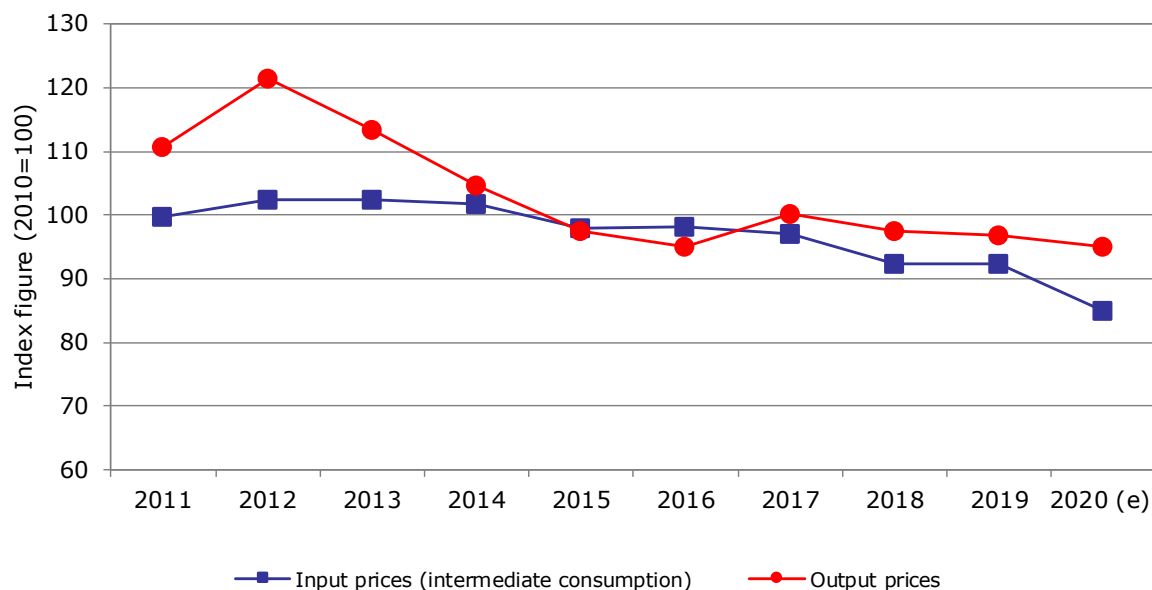


Source: Eurostat(Online Data Table: aact_eaa06, lc_lci_r2_a)

Updated: June 2021

(*) The so-called indicator A is the real net value added at factor cost of agriculture per annual work unit (AWU). The net value added at factor cost (factor income) is calculated by subtracting the consumption of fixed capital from gross value added at basic prices and adding the value of subsidies less taxes. The AWU is defined as the work volume corresponding to one full-time employed worked.

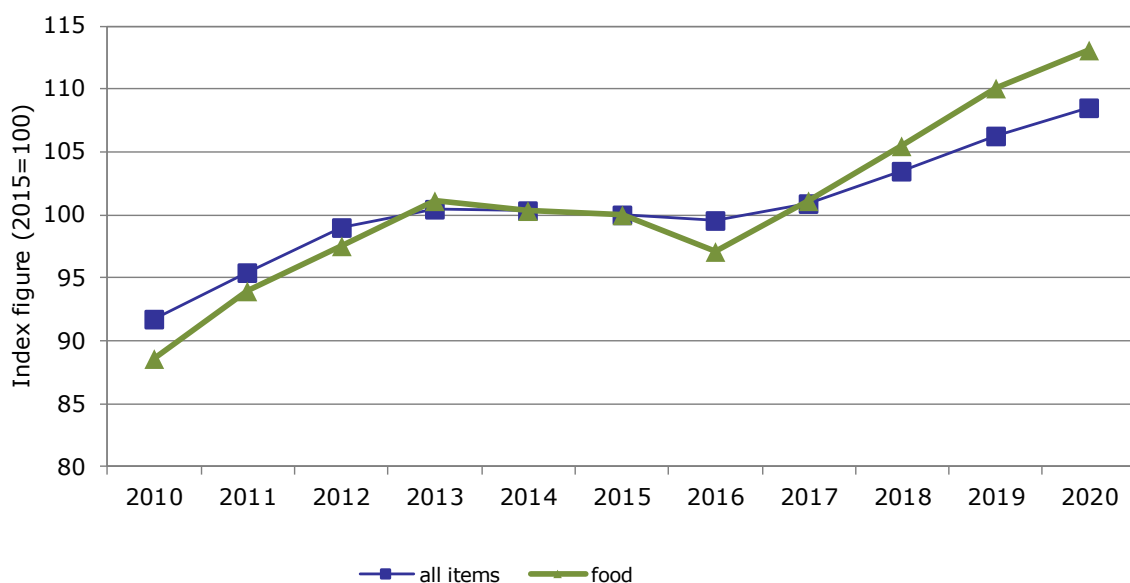
Evolution of agricultural input and output prices



Source: Eurostat(Online data table: aact_eaa05)

Updated: June 2021

Evolution of harmonised indices of consumer prices

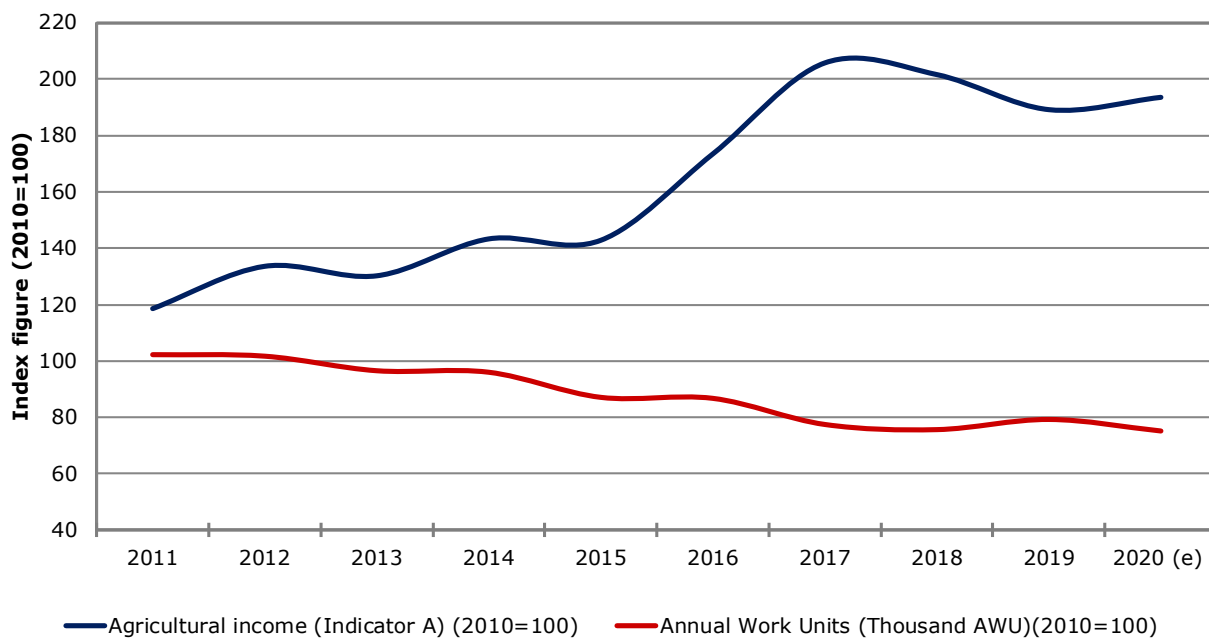


Source: Eurostat(Online Data Table: prc_hicp_aind)

Updated: June 2021

4.6. AGRICULTURE: ECONOMIC ACCOUNTS

Farms' income and labour development index (real terms)

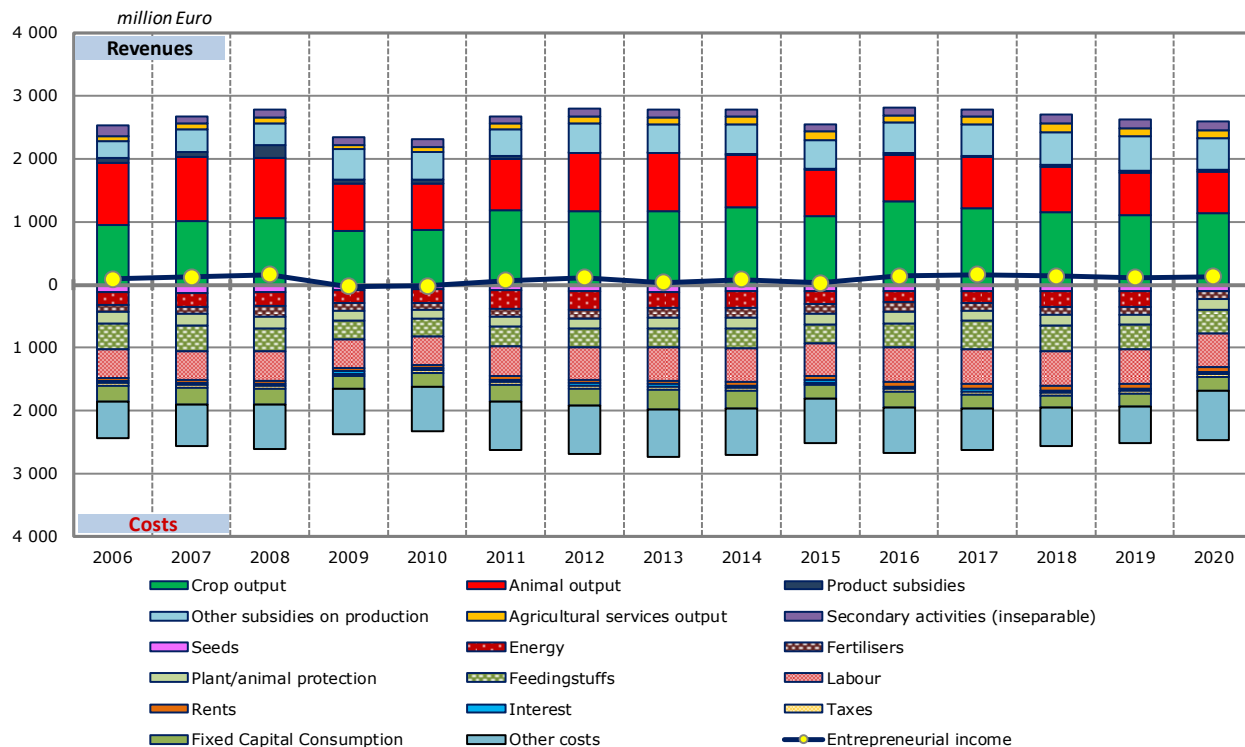


Source: Eurostat(Online Data Table: aact_eaa06, aact_ali01) and DG Agriculture and Rural Development

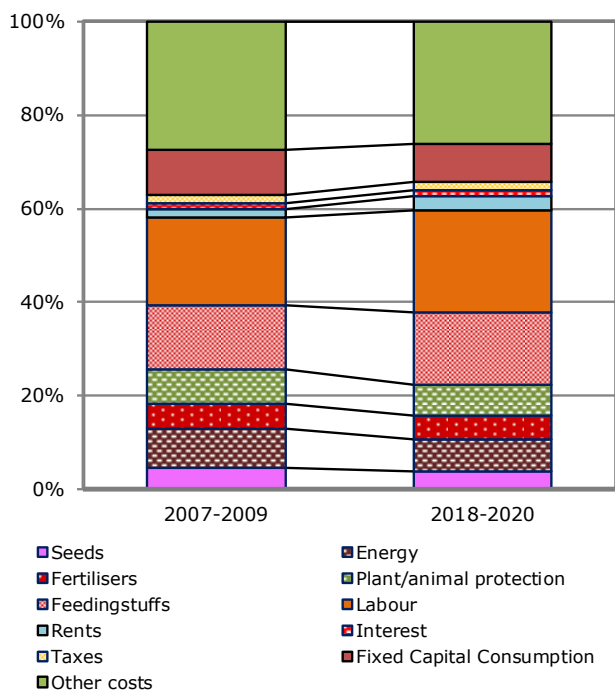
Updated: June 2021

4.7. AGRICULTURE: ECONOMIC ACCOUNTS

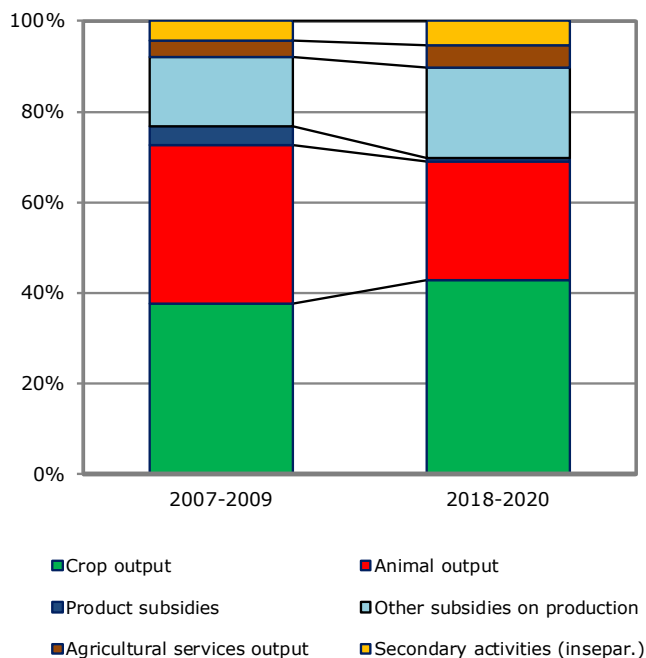
Agricultural income (real prices)



Cost Structure



Revenue Structure



5.1. AGRICULTURAL TRADE

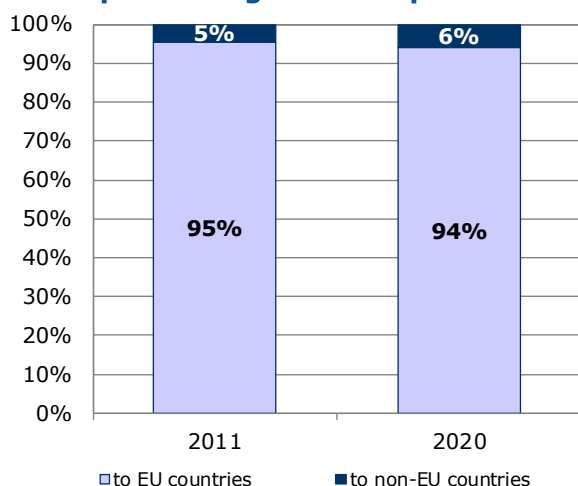
Agricultural trade in 2020

By category of product	Total trade	Trade with EU countries		Trade with non-EU countries	
	Million EUR	Million EUR	% change 2020/2019	Million EUR	% change 2020/2019
Exports					
Commodities	1 077	1 043	17.5%	34	18.5%
Other primary products	518	492	-11.3%	26	-28.2%
Processed products	473	440	-5.3%	33	29.6%
Food preparations	839	768	8.1%	71	10.1%
Beverages	92	75	8.4%	17	87.2%
Non edible	133	126	2.0%	4	64.0%
Total agricultural products	3 131	2 944	0.4%	185	-0.9%
as % of total exports	4.2%	5.0%		1.2%	
Imports					
Commodities	644	616	-0.5%	29	-16.2%
Other primary products	1 449	1 406	0.3%	43	-10.1%
Processed products	828	807	2.4%	22	-6.9%
Food preparations	1 183	1 147	4.0%	36	27.3%
Beverages	336	314	-1.7%	22	24.6%
Non edible	390	363	-2.8%	11	4.6%
Total agricultural products	4 831	4 652	1.1%	162	0.32%
as % of total imports	6.5%	7.8%		1.1%	
Balance					
Commodities	433	427		5	
Other primary products	- 931	- 913		- 17	
Processed products	- 355	- 367		12	
Food preparations	- 344	- 379		35	
Beverages	- 244	- 239		- 5	
Non edible	- 258	- 236		- 7	
Total agricultural products	-1 699	-1 708		23	

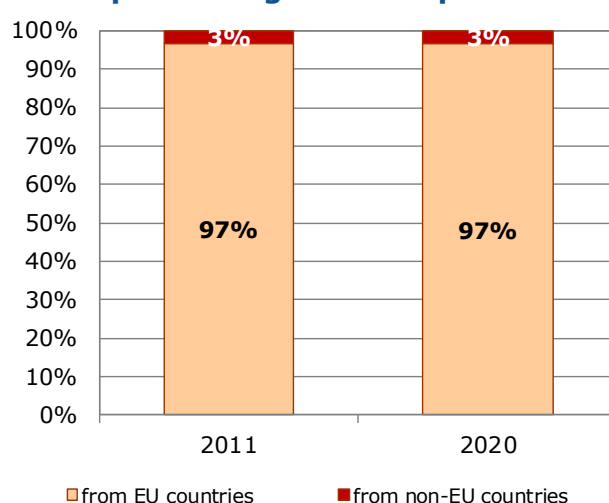
Source: Directorate General for Agriculture and Rural Development, based on COMEXT data

Updated: June 2021

Exports of agricultural products

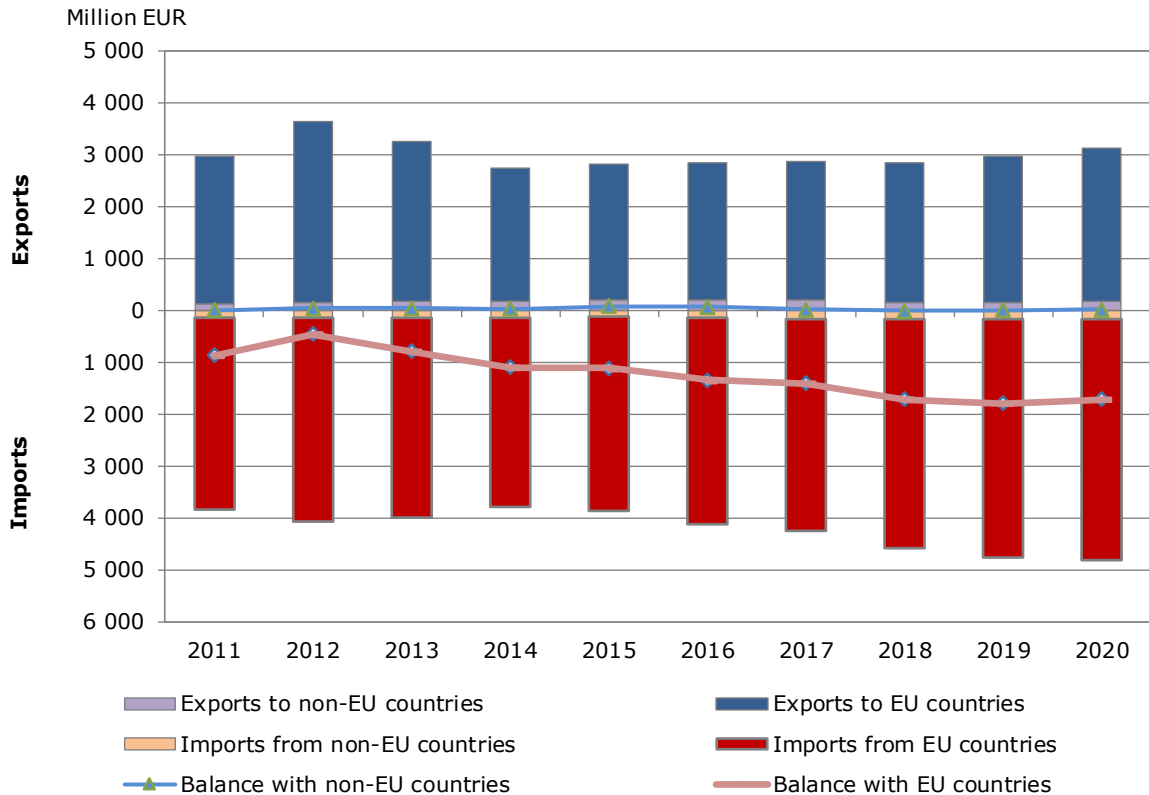


Imports of agricultural products

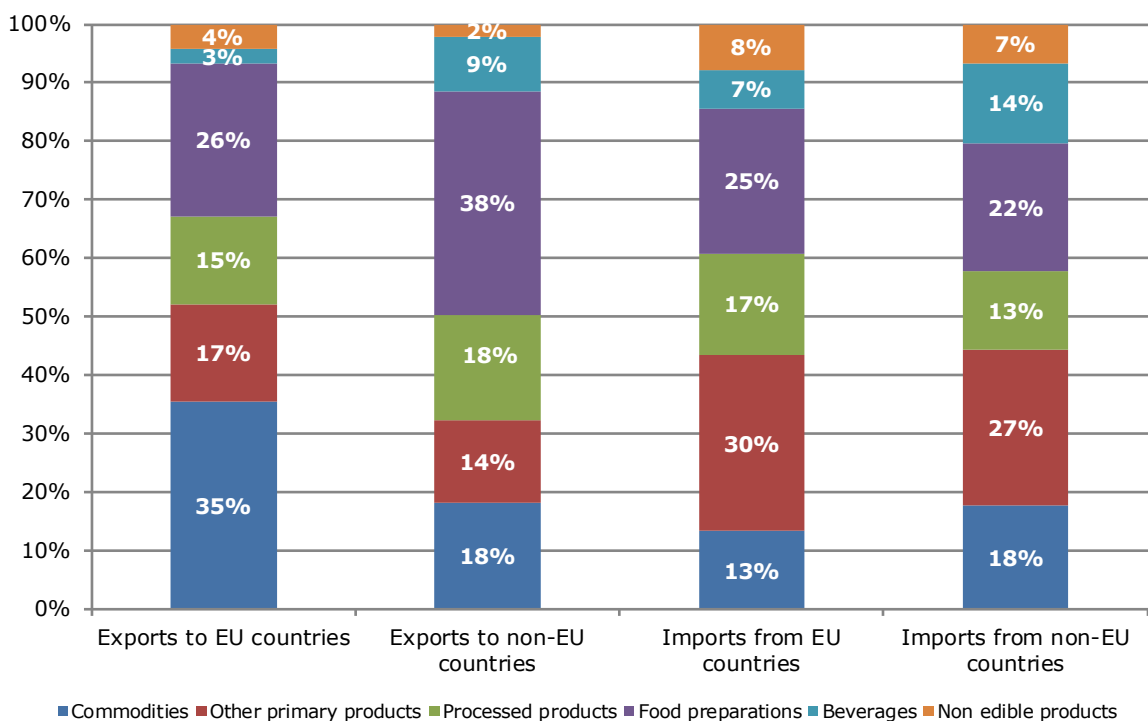


5.2. AGRICULTURAL TRADE

Evolution of agricultural trade with EU and non-EU countries



Structure of agricultural exports and imports



6.1. FARM STRUCTURE

Structure of agricultural holdings

Holdings		2010		2016	
		Total	%	Total	%
By UAA (*)	< 5 ha	15 750	64.4%	14 290	55.7%
	5-10 ha	2 660	10.9%	3 570	13.9%
	10-20 ha	1 630	6.7%	2 540	9.9%
	20-30 ha	730	3.0%	1 000	3.9%
	30-50 ha	700	2.9%	920	3.6%
	50-100 ha	780	3.2%	940	3.7%
	> 100 ha	2 210	9.0%	2 400	9.4%
By economic size (**)	< 4 000 €	14 550	59.5%	12 570	49.0%
	< 8 000 €	3 940	16.1%	4 950	19.3%
	< 15 000 €	1 710	7.0%	2 640	10.3%
	< 25 000 €	890	3.6%	1 340	5.2%
	< 50 000 €	860	3.5%	1 200	4.7%
	< 100 000 €	670	2.7%	800	3.1%
	< 250 000 €	660	2.7%	820	3.2%
	< 500 000 €	370	1.5%	450	1.8%
=/> 500 000 €	810	3.3%	880	3.4%	
By LSU (***)	0	6 140	25.1%	9 620	37.5%
	0-5	14 950	61.1%	11 780	45.9%
	5-10	1 080	4.4%	1 400	5.5%
	10-15	340	1.4%	580	2.3%
	15-20	210	0.9%	290	1.1%
	20-50	510	2.1%	730	2.8%
	50-100	290	1.2%	340	1.3%
	100-500	640	2.6%	660	2.6%
	> 500	320	1.3%	250	1.0%
By age of holder	< 35 years	1 730	7.1%	2 840	11.1%
	35-44 years	3 640	14.9%	4 810	18.7%
	45-54 years	6 610	27.0%	6 020	23.5%
	55-64 years	6 920	28.3%	6 760	26.3%
	> 64 years	5 560	22.7%	5 220	20.3%
	not applicable	:	:	:	:
Total	24 460	100%	25 650	100%	
UAA in 1 000 ha	1 896		1 890		
UAA (ha) per holding	77.5		74		

Source: Eurostat (Online Data Table: ef_m_farmleg), Farm Structure Survey

Updated: June 2021

(*) UAA = Utilised agricultural area.

(**) Economic size: The standard output of an agricultural product (crop or livestock), abbreviated as SO, is the average monetary value of the agricultural output at farm-gate price, in euro per hectare or per head of livestock. There is a regional SO coefficient for each product, as an average value over a reference period (5 years, except for the SO 2004 coefficient calculated using the average of 3 years). The sum of all the SO per hectare of crop and per head of livestock in a farm is a measure of its overall [economic size](#), expressed in euro.

(***) LSU = Livestock units. A LSU is equivalent to a dairy cow. The number of animals (heads) is converted into LSU using a set of coefficients reflecting the feed requirements of the different animal categories.

6.2. FARM STRUCTURE

Structure of farm labour force

2016			
Family labour force		Non family labour force	
persons:	40 300	Data not available	
of which women:	34.3%		
AWUs (*):	13 590	AWUs:	32 010
Holders	Family members	Regular non family labour force	Non regular non family labour force
persons:	persons:	persons:	Data not available
22 460	17 840	38 880	
of which women:	of which women:	of which women:	
19.9%	52.5%	26.4%	
AWUs:	AWUs:	AWUs:	AWUs:
8 880	4 710	32 010	1 590
Total farm labour force (persons)		79 180	
Total farm labour force (AWUs)		47 190	

Source: Eurostat(Online Data Table: ef_lf_main), Farm Structure Survey

Updated: June 2021

* AWUs = Annual work units. An AWU is equivalent to a worker employed on a full time basis for one year.

6.3. FARM STRUCTURE

Structure of farm livestock

Livestock and holdings with livestock in 2016

	Livestock unit (LSU)	Head (animal)	Thousand heads (animals)	Holding*	Percent structure	
					Livestock unit (LSU)	Holding*
Livestock	621 590	:	:	16 120	100%	100%
Live horses, asses, mules and hinnies	6 180	7 720	:	1 480	1%	9%
Live bovine animals	328 220	452 460	:	7 950	53%	49%
Live swine	118 470	483 980	:	6 170	19%	38%
Live sheep	37 410	374 060	:	3 380	6%	21%
Live goats	1 640	16 410	:	1 470	0%	9%
Live poultry	129 520	:	12 060	7 390	21%	46%
Rabbits, breeding females	150	7 570	:	1 520	0%	9%
Bees (hives)	:	11 210	:	670	:	4%
Other animals	:	:	:	1 740	:	11%

*note that holdings can keep various animals at the same time so the number of holdings with "Livestock" is less than the sum of groups of holdings with particular animals

Number of holdings with livestock herds by size class of livestock units, in 2016

ANIMALS/holdings*	Less than 5 LSU	From 5 to 9.9 LSU	From 10 to 14.9 LSU	From 15 to 19.9 LSU	From 20 to 49.9 LSU	From 50 to 99.9 LSU	From 100 to 499.9 LSU	500 LSU or over
Livestock	11 780	1 400	580	290	730	340	660	250
Live horses, asses, mules and hinnies	700	330	120	60	120	50	80	30
Live bovine animals	4 610	1 060	450	220	550	270	590	200
Live swine	5 180	420	150	60	110	60	100	80
Live sheep	2 020	350	160	100	290	150	220	90
Live goats	960	210	80	40	100	40	50	10
Live poultry	6 700	380	100	30	50	20	40	50
Rabbits, breeding females	1 420	70	20	:	10	:	:	0

*note that holdings can keep various animals at the same time so the number of holdings with "Livestock" is less than the sum of groups of holdings with particular animals

Number of livestock units in livestock herds by size classes of livestock units, in 2016

ANIMALS/LSU	Less than 5 LSU	From 5 to 9.9 LSU	From 10 to 14.9 LSU	From 15 to 19.9 LSU	From 20 to 49.9 LSU	From 50 to 99.9 LSU	From 100 to 499.9 LSU	500 LSU or over
Livestock	19 170	9 690	7 080	5 030	22 710	24 280	159 450	374 180
Live horses, asses, mules and hinnies	1 070	1 100	670	460	1 060	540	720	560
Live bovine animals	7 960	5 730	4 510	3 080	13 710	15 290	129 290	148 660
Live swine	4 610	1 230	690	490	1 380	1 820	7 120	101 130
Live sheep	2 070	1 120	920	830	5 750	5 480	14 670	6 580
Live goats	510	220	150	80	260	160	240	30
Live poultry	2 830	280	130	100	560	990	7 400	117 230
Rabbits, breeding females	120	10	10	:	:	:	:	0

Source: Eurostat online data tables ef_m_farmleg, ef_lsk_main.

Updated: September 2021

The data extracted in June and September 2021, for the most recent data see sources

This document does not necessarily represent the official views of the European Commission
© European Union, 2020 - Reproduction authorised provided the source is acknowledged

Contact: DG Agriculture and Rural Development, Farm Economics Unit

Tel: +32-2-29 75471 / E-mail: Agri-C3@ec.europa.eu