



European Meat Market Observatory

Beef and Veal market

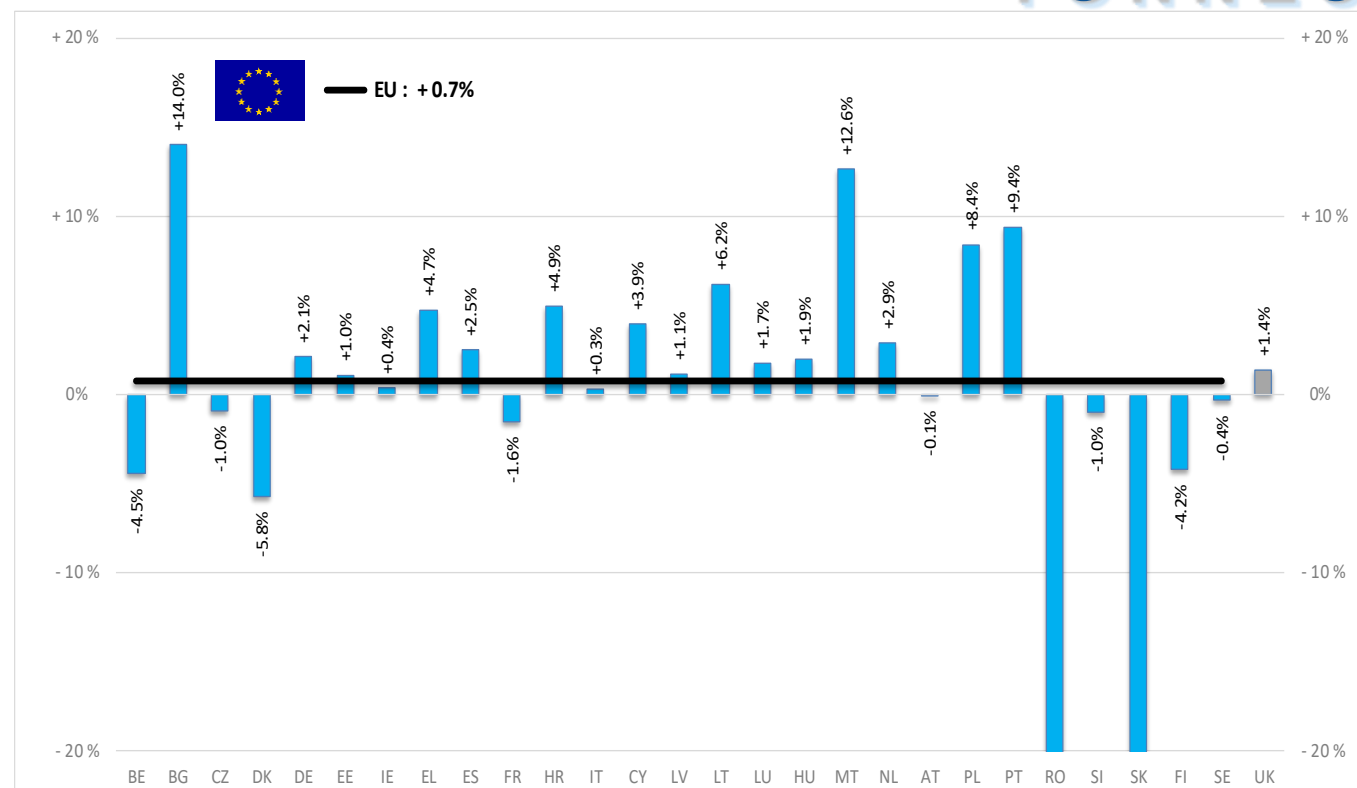
22 June 2020

PRODUCTION

% EVOLUTION TONNES

HEADS	Jan-Mar 20/19	
	EU	EU + UK
Bull	+1.6%	+1.5%
Bullock	+6.0%	+4.2%
Cow	-0.4%	-0.4%
Heifer	+3.1%	+3.6%
Calve	-1.6%	-2.3%
Young cattle	-0.2%	+0.1%
Meat of bovine animals	+0.7%	+0.8%

Estimates for last month of period :



Source : EStat - Newcronos

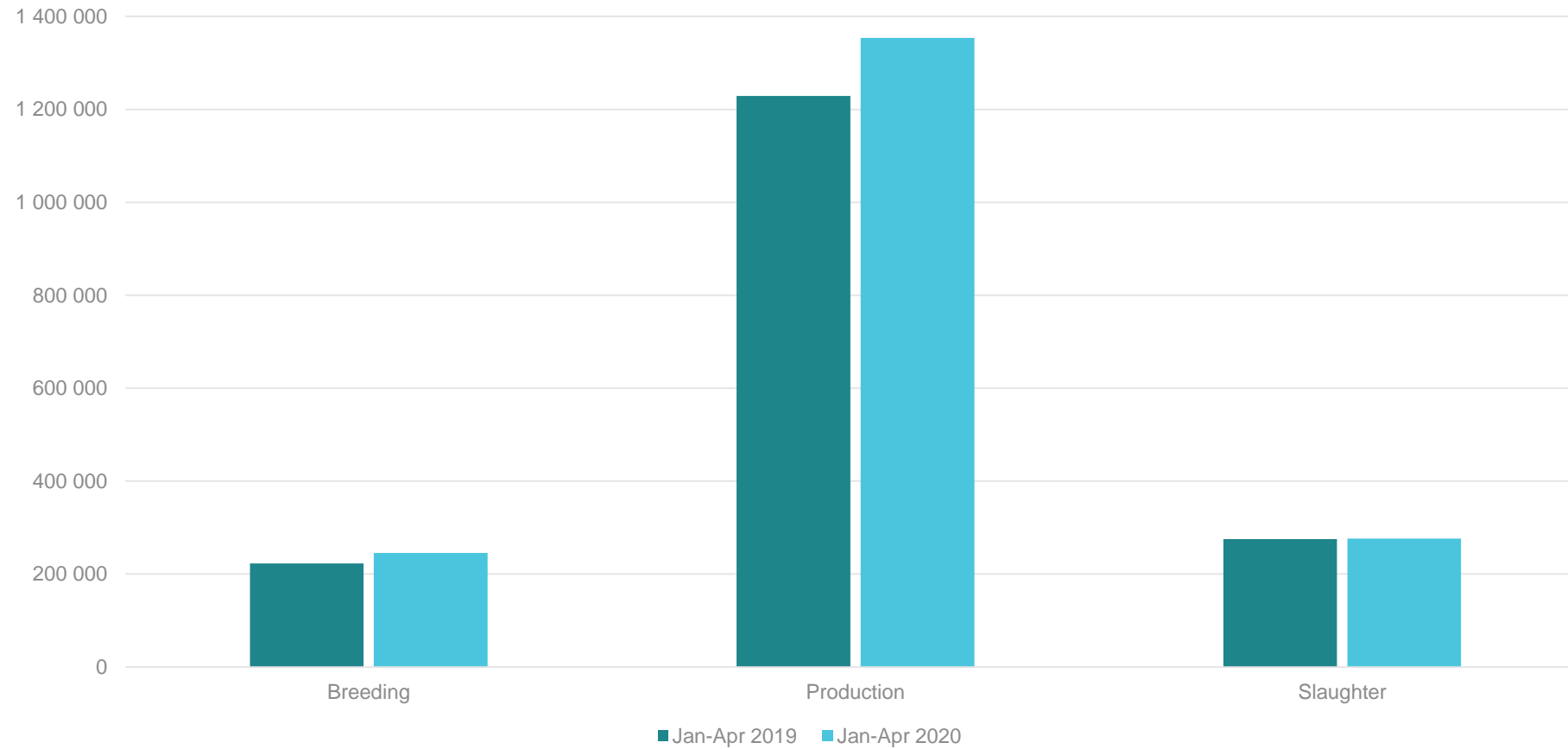
PSA

Reg. (EU) 2020/596 - PSA for fresh and chilled meat of bovine animals aged eight months or more and fixing the amount of aid in advance (Art. 7)

MS	90-days	120-days	150-days	Quantity (tons)	
				Grand TOTAL	
Spain	486	0	22	508	
Poland	42	0	400	442	
Netherlands	20	220	20	260	
Austria	260	0	0	260	
France	240	0	0	240	
Italy	65	0	0	65	
Latvia	50	0	0	50	
Germany	40	0	0	40	
Ireland	20	0	0	20	
Grand Total	1 223	220	442	1885	

TOTAL applications received since 7 May 2020

Number of bovine animals certified for the movement to another MS (TRACES)



PRICES CARCASSES

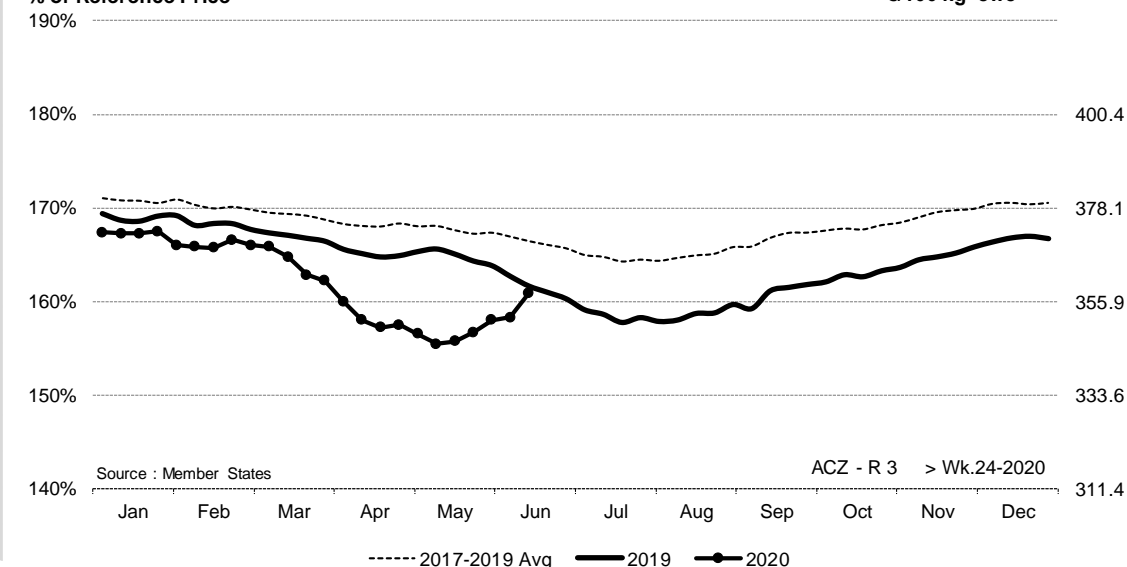
EU Prices week		24	Evolution since last week	Evolution since last month	Evolution since last year
Carcasse	Average A/C/Z-R3	357.8	+ 1.6%	+ 3.3%	- 1.1%
	Young Bovines (Z)	390.1	+ 12.5%	+ 12.8%	+ 12.5%
	Young Bulls (A)	347.6	- 0.8%	+ 1.0%	- 2.0%
	Steers (C)	364.6	- 0.0%	+ 2.0%	- 5.1%
	Cows (D)	272.6	+ 1.5%	+ 6.1%	- 7.4%
	Heifers (E)	363.0	+ 0.3%	+ 2.7%	- 3.2%
Live Animals	Male Calves Dairy Type	79.13	+ 6.5%	+ 15.3%	- 35.6%
	Male Calves Beef Type	202.2	+ 4.0%	+ 12.3%	- 14.2%
	Young Store Cattle	2.43	- 0.1%	+ 0.4%	+ 0.9%
	Yearling Male Store Cattle	2.29	- 0.6%	- 1.9%	- 3.1%
	Yearling Female Store Cattle	2.34	- 0.9%	- 1.3%	- 4.1%
	Calves slaughtered <8M	414.4	+ 1.9%	- 1.2%	- 8.6%

EVOLUTION A/C/Z.R3

ACZ - R 3 > Wk.24-2020

% of Reference Price

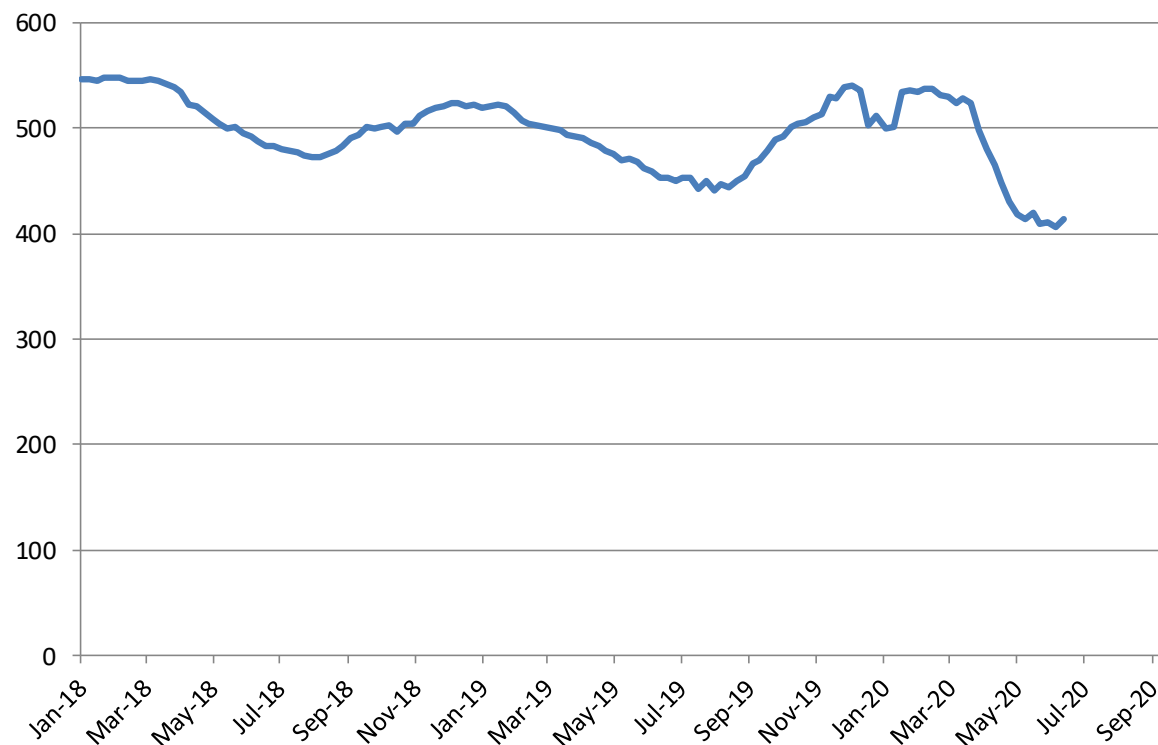
€/100 kg cwe



Price in week 24 : **357.85**
 % change y/y : **- 0.5%**
 % Ref. Price in wk 24 : **160.9%**

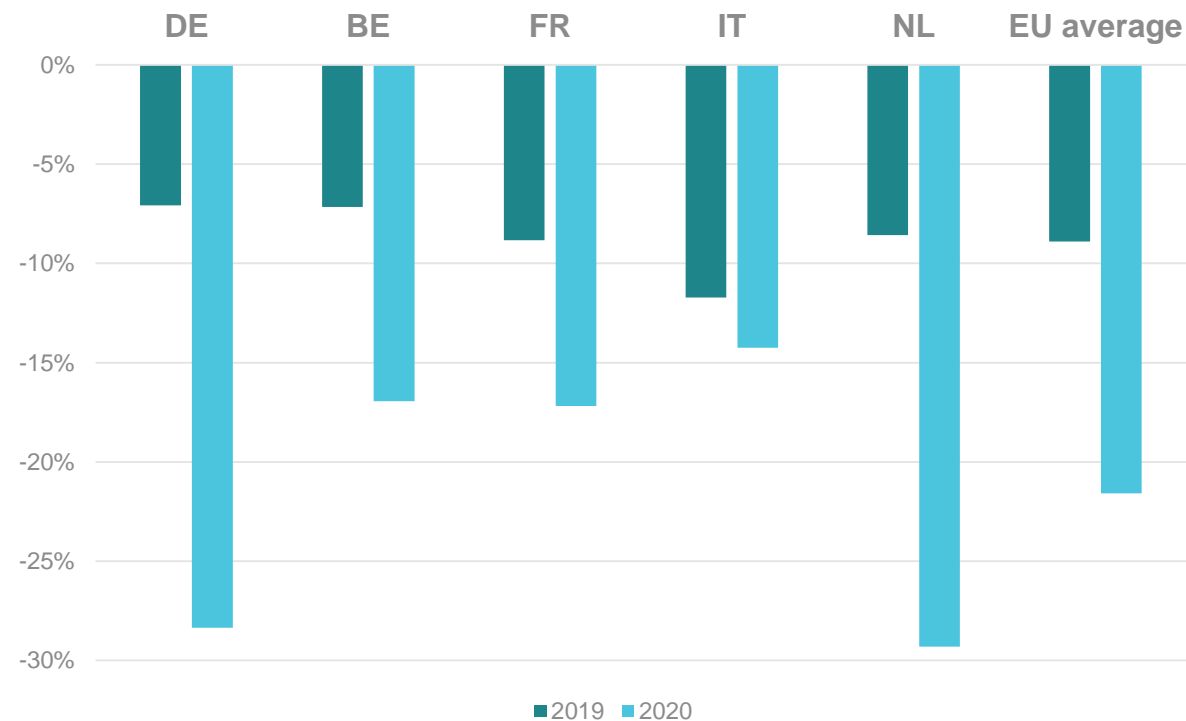
Average price in May 2020 : **348.04**
 % change y/y : **- 5.1%**

Calves Slaughtered before the Age of 8 Months



Price in Week 24 414,48 € / 100 kg of carcasse weight
Change y/ -8,61%

Veal price % evolution from week 11 to week 24



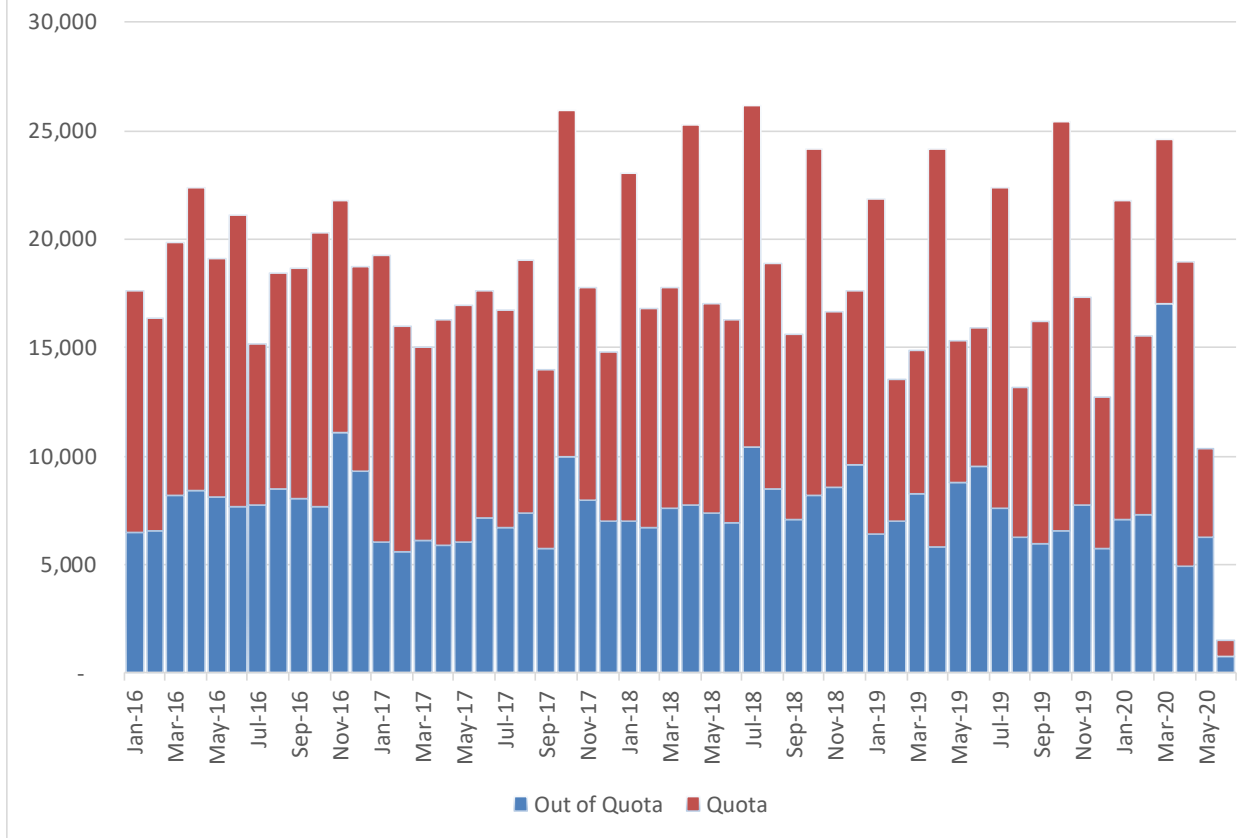
EU Exports of Beef and Live Animals (COMEXT – tonnes cwe)

Destinations	2016		2017		2018		2019		Jan-Apr 20		Compared to Jan-Apr 19
	tonnes	%	tonnes	%	tonnes	%	tonnes	%	tonnes	%	
United Kingdom	477 394	41.5%	493 228	40.4%	486 482	40.9%	439 803	38.6%	119 790	34.4%	- 23.0%
Hong Kong	47 532	4.1%	76 085	6.2%	55 538	4.7%	46 748	4.1%	17 518	5.0%	- 1.1%
Ghana	37 490	3.3%	37 744	3.1%	36 766	3.1%	39 222	3.4%	15 967	4.6%	+ 28.6%
Algeria	25 003	2.2%	26 305	2.2%	35 410	3.0%	57 152	5.0%	15 623	4.5%	- 13.4%
Israel	41 534	3.6%	44 196	3.6%	47 774	4.0%	49 685	4.4%	13 467	3.9%	- 29.1%
Philippines	24 116	2.1%	37 103	3.0%	28 766	2.4%	34 158	3.0%	11 646	3.3%	+ 7.9%
Ivory Coast	35 371	3.1%	36 038	3.0%	36 063	3.0%	33 428	2.9%	11 343	3.3%	+ 17.1%
Lebanon	47 010	4.1%	38 323	3.1%	42 542	3.6%	36 393	3.2%	11 202	3.2%	- 9.3%
China	10 253	0.9%	5 738	0.5%	6 713	0.6%	22 348	2.0%	10 355	3.0%	+ 128.8%
Bosnia-Herz.	38 875	3.4%	34 710	2.8%	38 762	3.3%	41 145	3.6%	10 269	2.9%	- 16.3%
Switzerland	24 872	2.2%	26 707	2.2%	23 762	2.0%	25 188	2.2%	8 967	2.6%	+ 8.4%
Libya	29 723	2.6%	27 848	2.3%	27 878	2.3%	24 524	2.2%	7 369	2.1%	- 5.9%
Canada	862	0.1%	2 424	0.2%	2 225	0.2%	6 806	0.6%	5 706	1.6%	+++
Japan	3 254	0.3%	4 281	0.4%	3 453	0.3%	8 038	0.7%	5 414	1.6%	+++
Morocco	7 517	0.7%	10 005	0.8%	11 429	1.0%	12 982	1.1%	4 939	1.4%	+ 12.7%
Ukraine	7 875	0.7%	7 331	0.6%	10 466	0.9%	13 835	1.2%	4 894	1.4%	+ 11.0%
Turkey	71 030	6.2%	96 414	7.9%	96 052	8.1%	34 421	3.0%	4 531	1.3%	- 42.7%
Other Destinations	220 712	19.2%	216 270	17.7%	198 284	16.7%	214 278	18.8%	69 658	20.0%	
Extra-EU	1 150 422		1 220 750		1 188 364		1 140 154		348 659		
% change			+ 6%		- 3%		- 4%		- 8.2%		

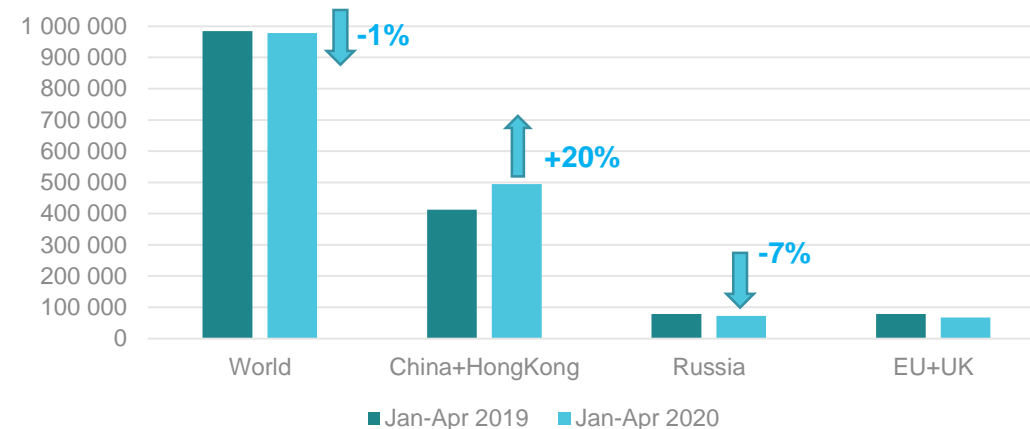
EU Imports of Beef and Live Animals (COMEXT – tonnes cwe)

Origins	2016		2017		2018		2019		Jan-Apr 20		Compared to Jan-Apr 19
	tonnes	%	tonnes	%	tonnes	%	tonnes	%	tonnes	%	
United Kingdom	134 098	33,0%	133 588	33,9%	138 477	32,5%	159 749	36,4%	38 306	31,1%	- 32,1%
Brazil	100 982	24,9%	87 156	22,1%	103 979	24,4%	99 547	22,7%	28 990	23,5%	- 12,2%
Argentina	43 111	10,6%	49 260	12,5%	69 011	16,2%	70 617	16,1%	23 446	19,0%	- 11,1%
Uruguay	52 896	13,0%	55 212	14,0%	48 712	11,4%	40 462	9,2%	13 613	11,0%	- 23,5%
USA	20 290	5,0%	21 624	5,5%	19 268	4,5%	16 852	3,8%	6 816	5,5%	- 17,7%
Australia	21 909	5,4%	18 193	4,6%	17 368	4,1%	16 516	3,8%	5 487	4,4%	- 22,4%
New Zealand	8 274	2,0%	6 806	1,7%	7 164	1,7%	6 724	1,5%	2 266	1,8%	+ 1,2%
Switzerland	5 496	1,4%	5 138	1,3%	5 437	1,3%	4 432	1,0%	1 420	1,2%	- 10,2%
Paraguay	5 309	1,3%	5 922	1,5%	5 520	1,3%	5 204	1,2%	1 260	1,0%	- 28,4%
Serbia	557	0,1%	565	0,1%	1 134	0,3%	1 062	0,2%	392	0,3%	+ 37,7%
Namibia	6 281	1,5%	5 043	1,3%	3 442	0,8%	7 734	1,8%	313	0,3%	- 74,2%
Botswana	4 204	1,0%	2 686	0,7%	3 119	0,7%	4 950	1,1%	265	0,2%	- 66,7%
Canada	392	0,1%	512	0,1%	1 343	0,3%	2 518	0,6%	207	0,2%	- 75,6%
Japan	518	0,1%	646	0,2%	791	0,2%	998	0,2%	200	0,2%	- 39,5%
Ukraine	317	0,1%	374	0,1%	257	0,1%	410	0,1%	87	0,1%	- 31,7%
Chile	575	0,1%	319	0,1%	356	0,1%	392	0,1%	85	0,1%	- 32,0%
Israel	0	0,0%	20	0,0%	0	0,0%	160	0,0%	67	0,1%	+++
Other Destinations	981	0,2%	1 020	0,3%	888	0,2%	613	0,1%	99	0,1%	
Extra-EU	406 191		394 085		426 265		438 941		123 318		
% change			- 3%		+ 8%		+ 3%		- 22,2%		

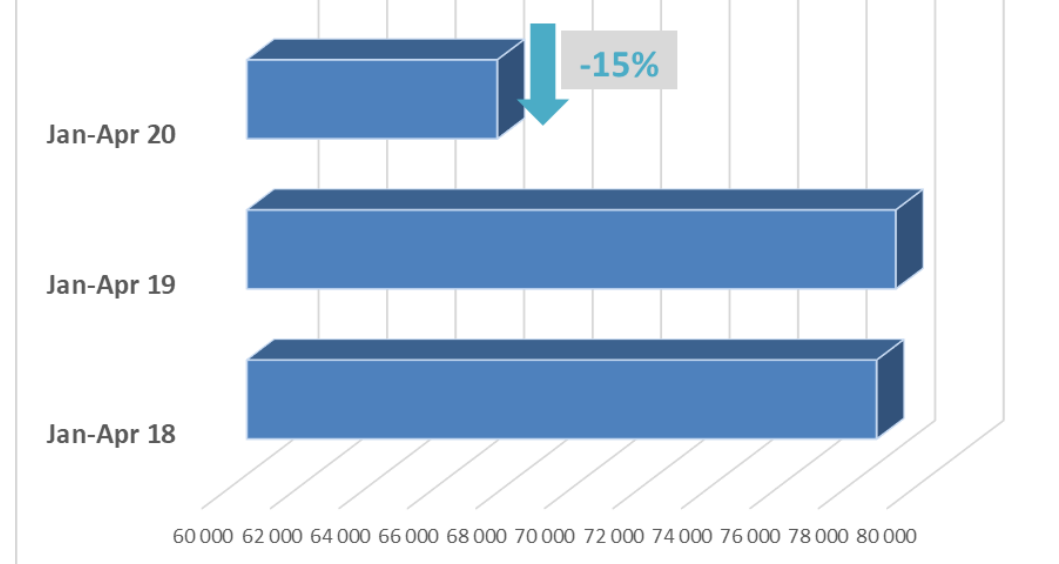
EU+UK Imports of Beef and Beef Products from Mercosur (in Tons of Carcase Weight)



Mercosur exports to selected countries (GTA- tonnes cwe)



Imports from Mercosur (COMEXT – tonnes cwe)



Keep in touch



ec.europa.eu/



europa.eu/



[@EU_Commission](https://twitter.com/EU_Commission)



[@EuropeanCommission](https://www.facebook.com/EuropeanCommission)



[European Commission](https://www.linkedin.com/company/european-commission)



[europeancommission](https://www.instagram.com/europeancommission)



[@EuropeanCommission](https://www.youtube.com/@EuropeanCommission)



[EUTube](https://www.youtube.com/EUTube)



[EU Spotify](https://open.spotify.com/playlist/37i9dQZF1DX0XUx1Q8JL0l)

Thank you



© European Union 2020

Unless otherwise noted the reuse of this presentation is authorised under the [CC BY 4.0](https://creativecommons.org/licenses/by/4.0/) license. For any use or reproduction of elements that are not owned by the EU, permission may need to be sought directly from the respective right holders.

Slide xx: **element concerned**, source: **e.g. Fotolia.com**; Slide xx: **element concerned**, source: **e.g. iStock.com**

