



# The CAP towards 2020

## Implementation of Rural Development Policy

### State of Play of RDPs

*Christiane Kirketerp de Viron*

*DG Agriculture and Rural Development*



Agriculture  
and Rural  
Development



## Disclaimer

*The synthesis presented in the following slides reflects the data submitted by Member States and Regions available to the Commission services on 13.02.2015. This presentation is made available without prejudice to any finding in respect of their compliance with the regulatory framework, which might lead to slight modification of the data shown.*

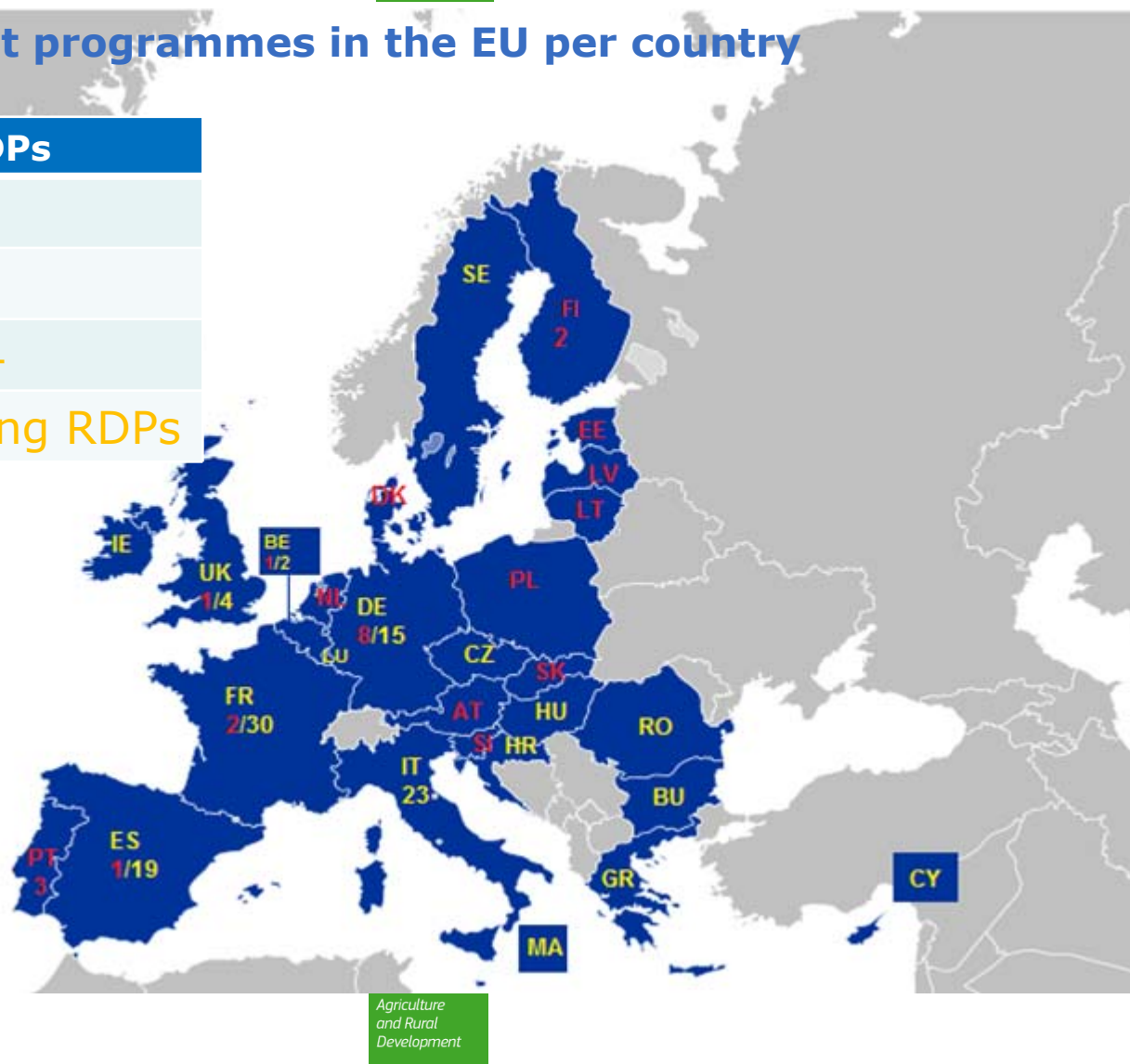


# *1. State of play in programming*

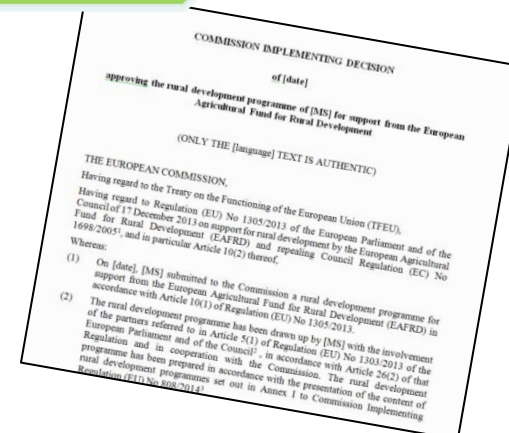
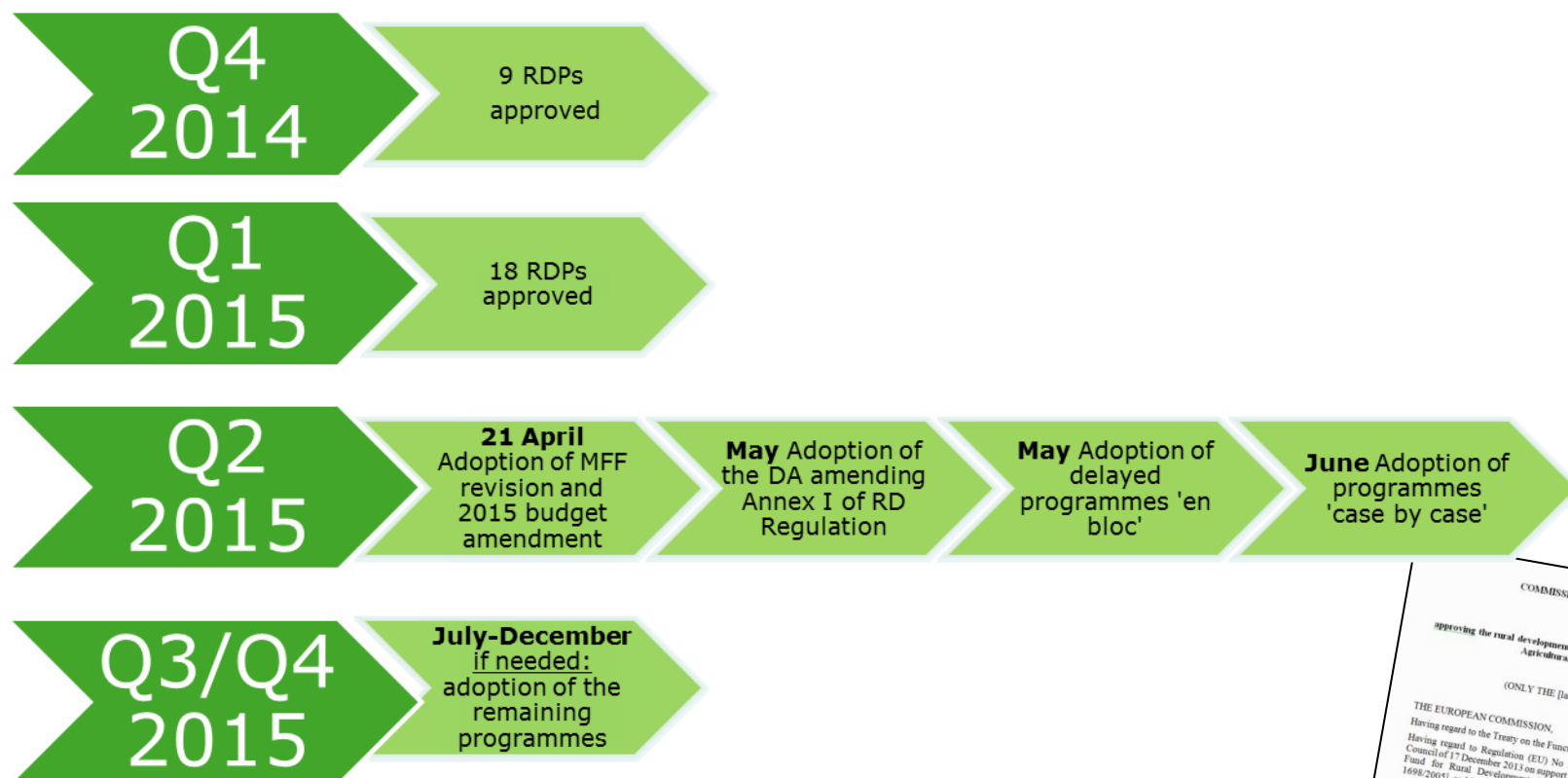
## Rural Development programmes in the EU per country

*situation as at 31/03/2015*

Adoption	of 118 RDPs
Dec. 2014	9
Feb. 2015	18
→ May 2015	Up to 24
May 2015 →	Remaining RDPs



# Timing Programme Adoption





## *2. Rural Development Funding*



## 2014 – 2020 EAFRD funding / MS (€ million)\*

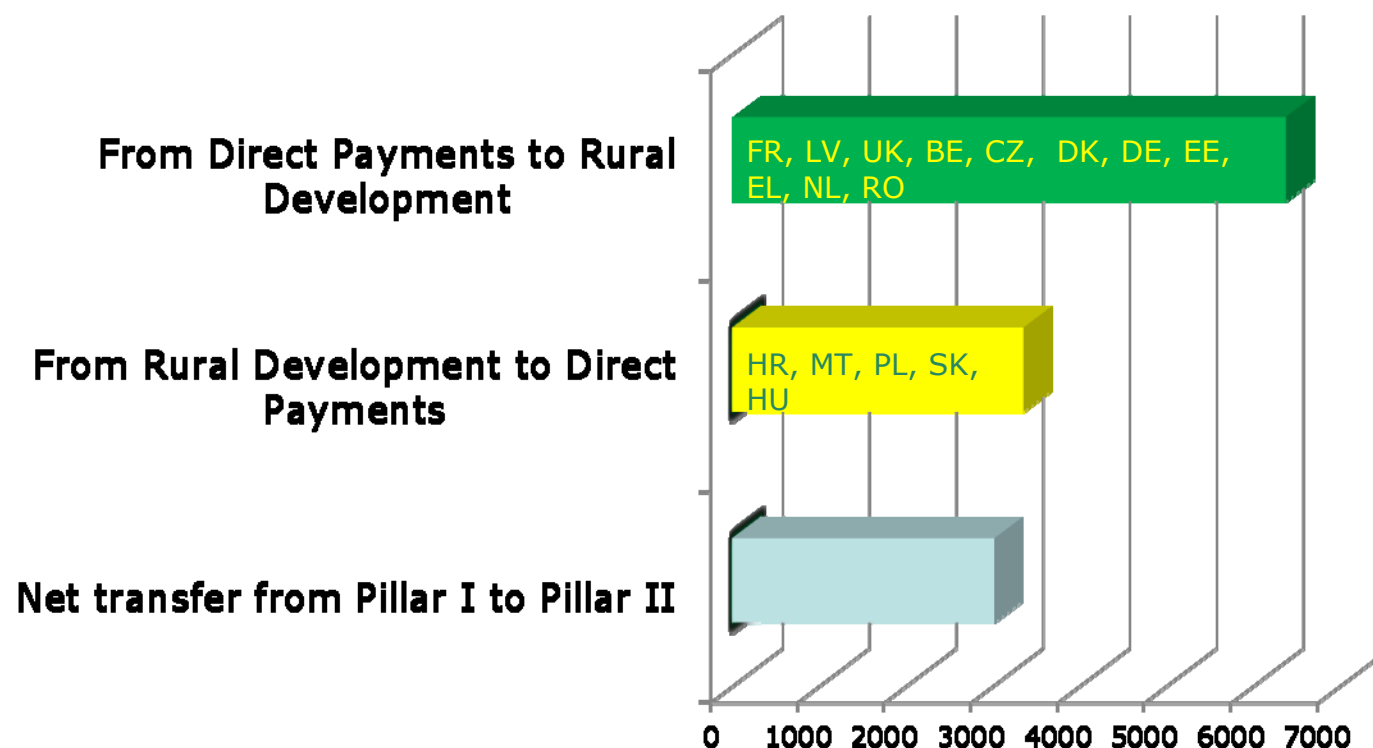
<b>BE</b> 	648	<b>HR</b> 	2 026	<b>PL</b> 	8 698
<b>BG</b> 	2 367	<b>IT</b> 	10 444	<b>PT</b> 	4 058
<b>CZ</b> 	2 306	<b>CY</b> 	132	<b>RO</b> 	8 128
<b>DK</b> 	919	<b>LV</b> 	1076	<b>SI</b> 	838
<b>DE</b> 	9 446	<b>LT</b> 	1 613	<b>SK</b> 	1 560
<b>EE</b> 	823	<b>LU</b> 	101	<b>FL</b> 	2 380
<b>IE</b> 	2 191	<b>HU</b> 	3 431	<b>SE</b> 	1 764
<b>EL</b> 	4 718	<b>MT</b> 	97	<b>UK</b> 	5 200
<b>ES</b> 	8 297	<b>NL</b> 	765		
<b>FR</b> 	11 385	<b>AT</b> 	3 938	<b>EU</b> 	99 586**

\*The envelopes to be in place after 2nd round of transfers between Pillars, COMMISSION DELEGATED REGULATION (EU) No 1378/2014, amending Annex I to Regulation (EU) No 1305/2013 of the European Parliament and of the Council and Annexes II and III to Regulation (EU) No 1307/2013 of the European Parliament and of the Council

\*\* includes EU level technical assistance (239 mil. EUR)

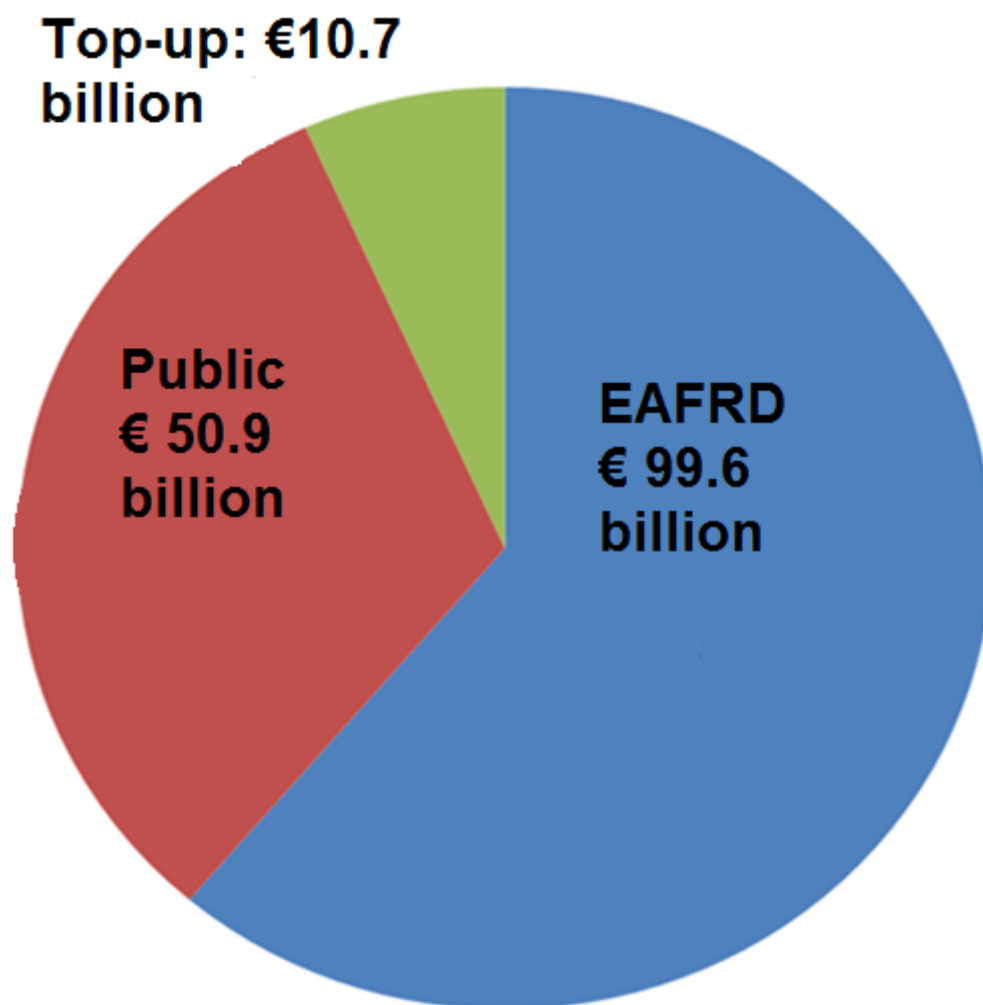


## Flexibility: budgetary transfers between Pillars (€ million)



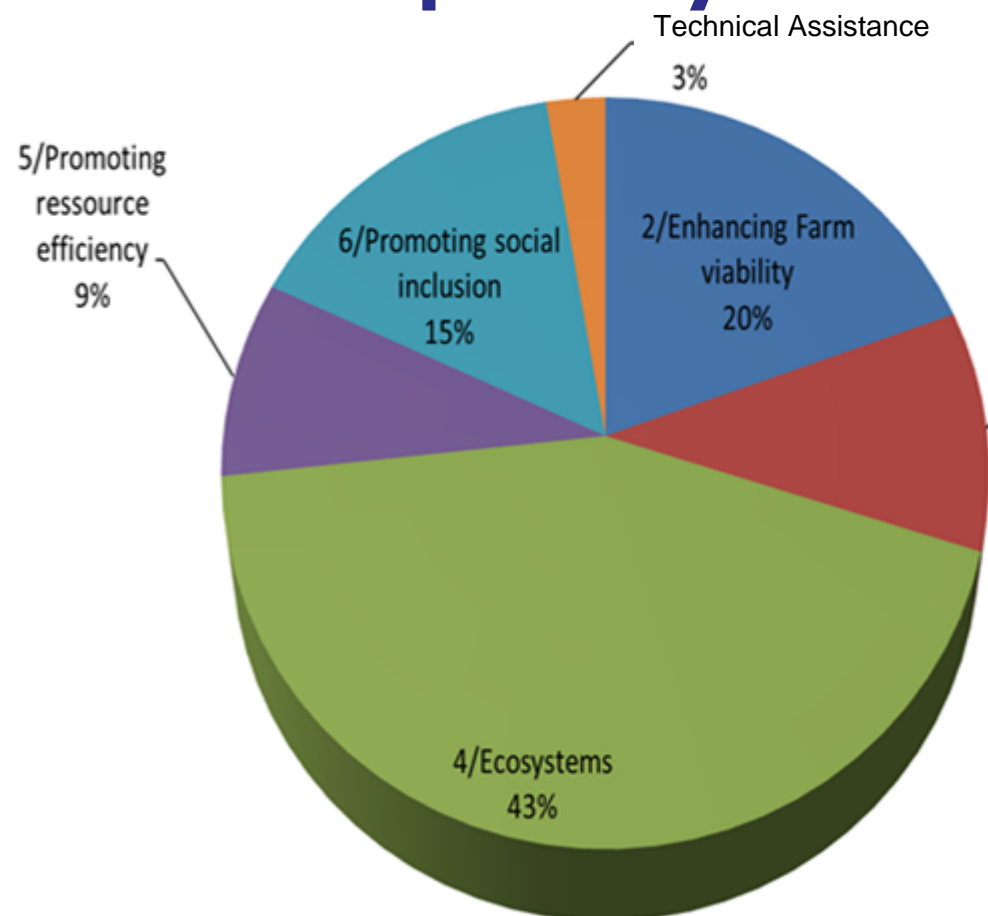
Around **€3 billion** will be transferred from pillar I to pillar II over 6 years (2014 – 2019)



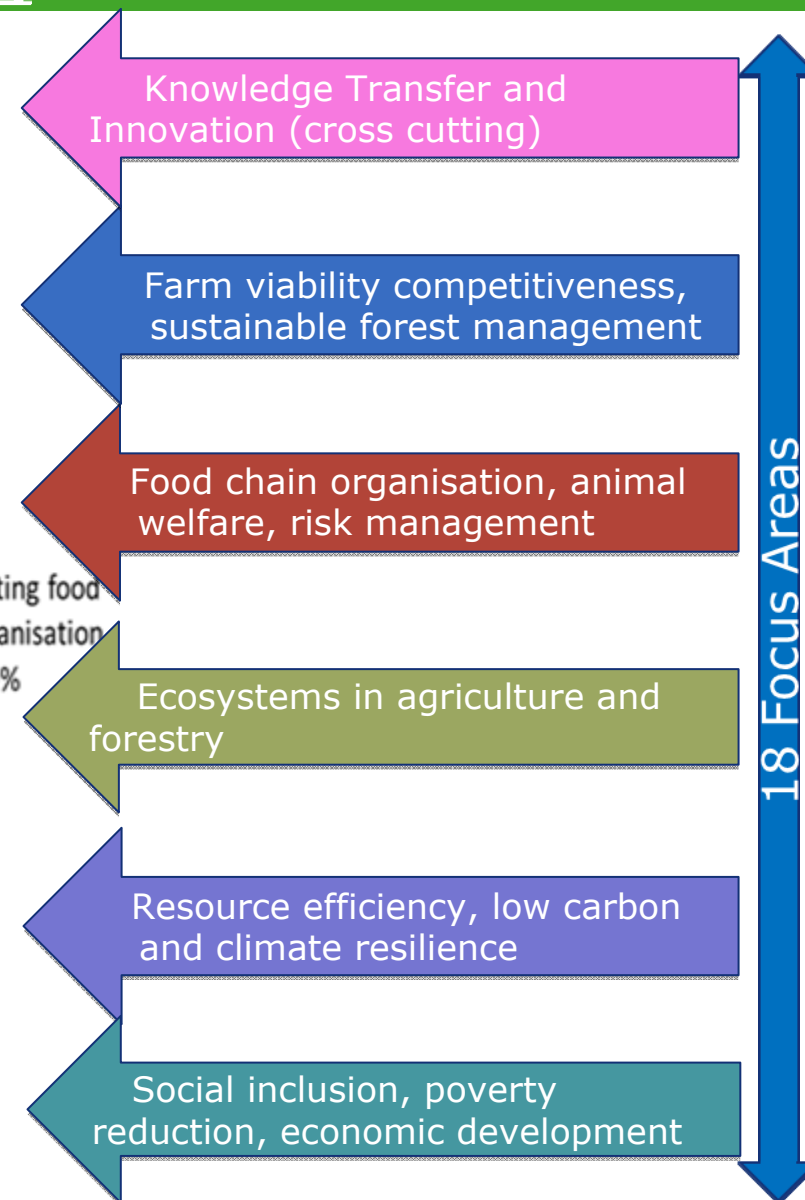


**In total, around  
€ 161 billion of  
total public  
funding**

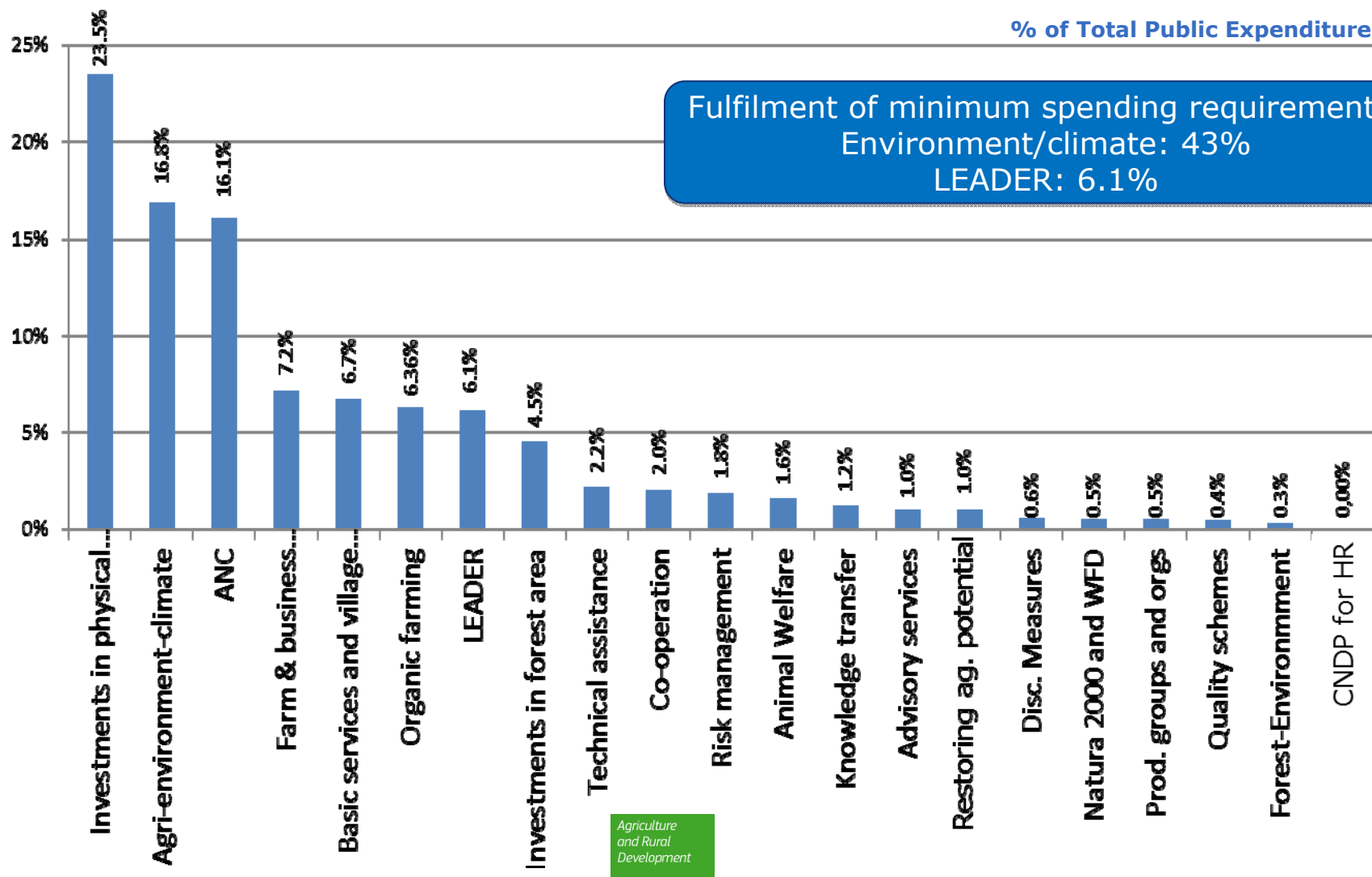
# Share of funds per RD priority



Agriculture  
and Rural  
Development



# Allocation of funds per measure





## *3. Implementation*

## Use of selected "new" features

	MS	RDPs
European Innovation Partnership	23	88
Risk Management	14	16
Development aid for Small Farms	15	34
ANC	25	92
Sub-programmes	4	6
Start-up aid for Young Farmers	23	89
Financial Instruments	9	14
LEADER/CLLD	28	109

# Start-up aid for Young Farmers

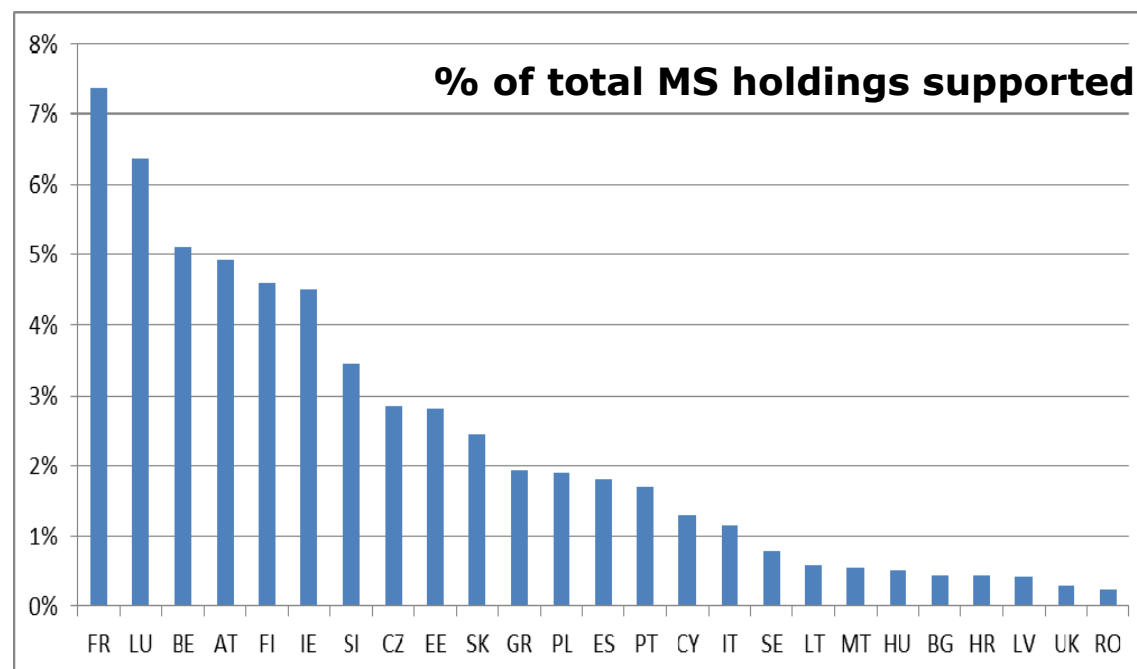
## Key facts and figures:

23 MS implementing

75% of RDPs implementing

€ 5.3 Billion total public expenditure

154 000 holdings supported



Figures show the targets set in the RDPs by Member States and regions

# Risk Management

## Key facts and figures:

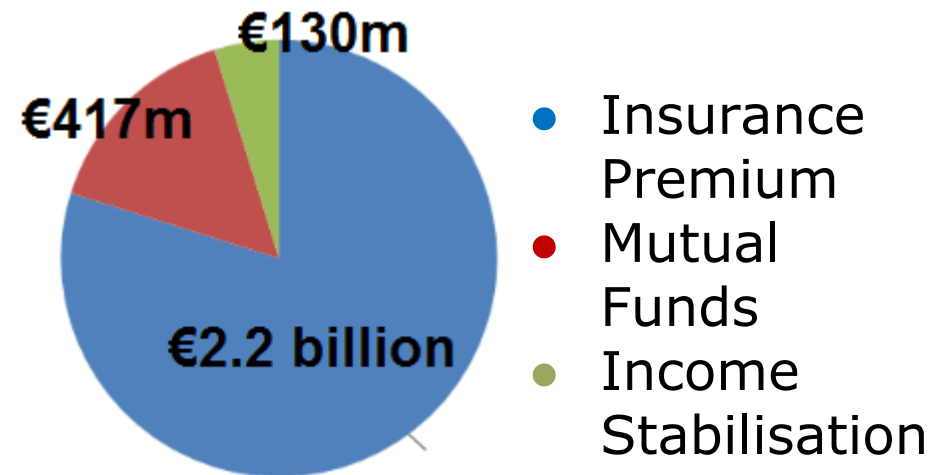
14 Member States  
implementing

16 RDPs (including National  
RDP in IT and FR)

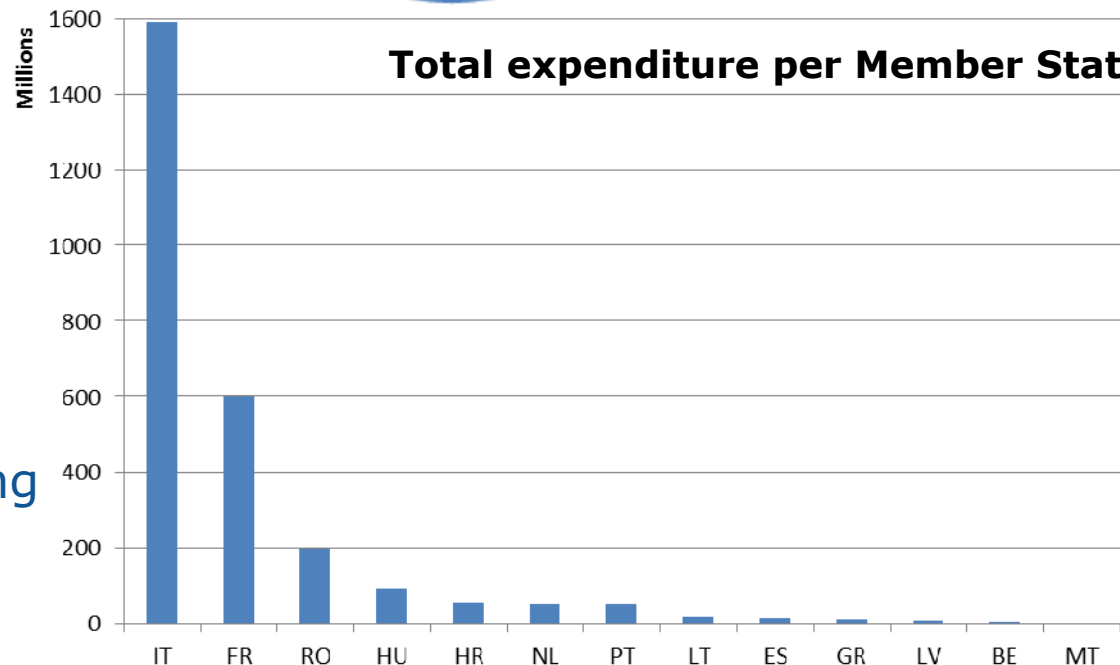
€ 2.7 billion in total public  
expenditure

675 000 holdings participating

## Total public expenditure



## Total expenditure per Member State



Figures show the targets set in the RDPs by Member States and regions

# LEADER

## Key facts and figures:

Implemented in all 28 MS

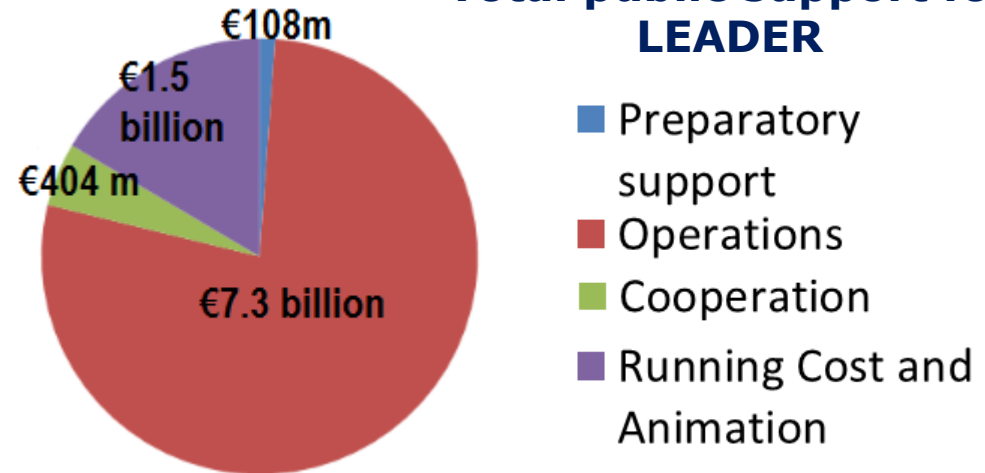
Implemented in 109 RDPs

€ 9.4 billion total public expenditure

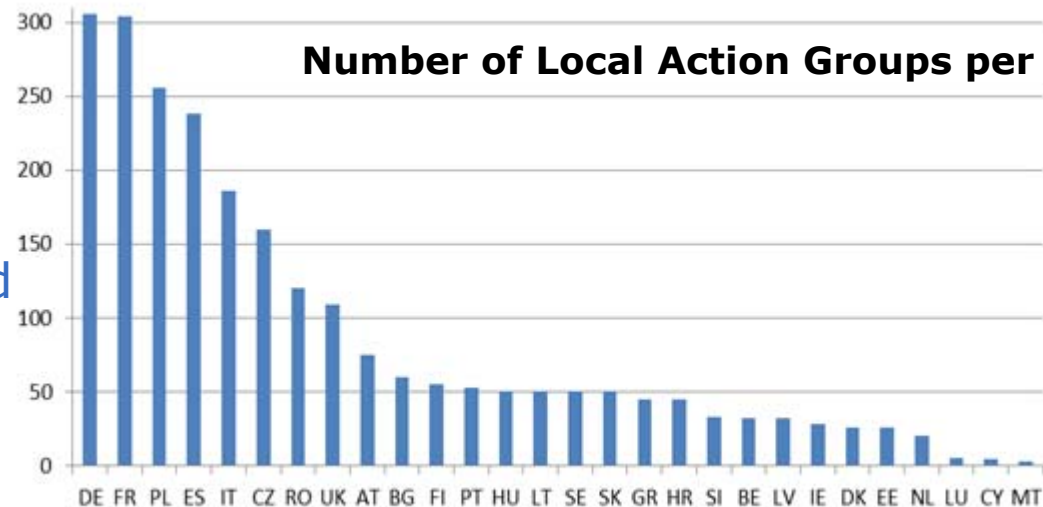
Around 2050 LAGs supported

147 million (48 %) of the EU's rural population in LAGs

## Total public support for LEADER



## Number of Local Action Groups per MS



Figures show the targets set in the RDPs by Member States and regions





## Designation of ANC

Timing for adoption of the new area designations for Areas with Natural Constraints (other than Mountain Areas)



**Budget:** A total of € 24 billion allocated



## Simplified Cost Options (SCO)

- Member States can use 3 SCO for payments to beneficiaries: lump sum, flat rates and unit costs
- Less administrative burden for administrations: no real costs, no invoices, simpler controls, lower error rate
- Less administrative burden for beneficiaries: based on outputs/results, less supporting documents, more certainty



# Fulfilment of ex-ante conditionalities

Examples of Ex-Ante Conditionality (of 7 General (G), 8 Specific (S))	% of fulfilment
	93%
Environmental legislation (G)	96%
Public procurement (G)	89%
Min. requirements for fertilisers and plant protection products (S)	98%
Water sector (S)	80%
Renewable energy (S)	98%



### *3. A selection of targets*



The following slides show examples of the targets set for specific Focus Areas

They are the aggregate of targets set in each RDP by Member States and regions

They are linked to actions programmed under the stated Focus Area only

The values given do not include additional effects from other parts of the RDP

*Example:  
The target value for non-agricultural jobs created under Focus Areas 6a and b does not include new jobs created as a direct/indirect effect of actions under other Focus Areas (e.g. for renewable energy)*

# Target for Knowledge Transfer & Innovation (KTI)

## Key facts and figures:

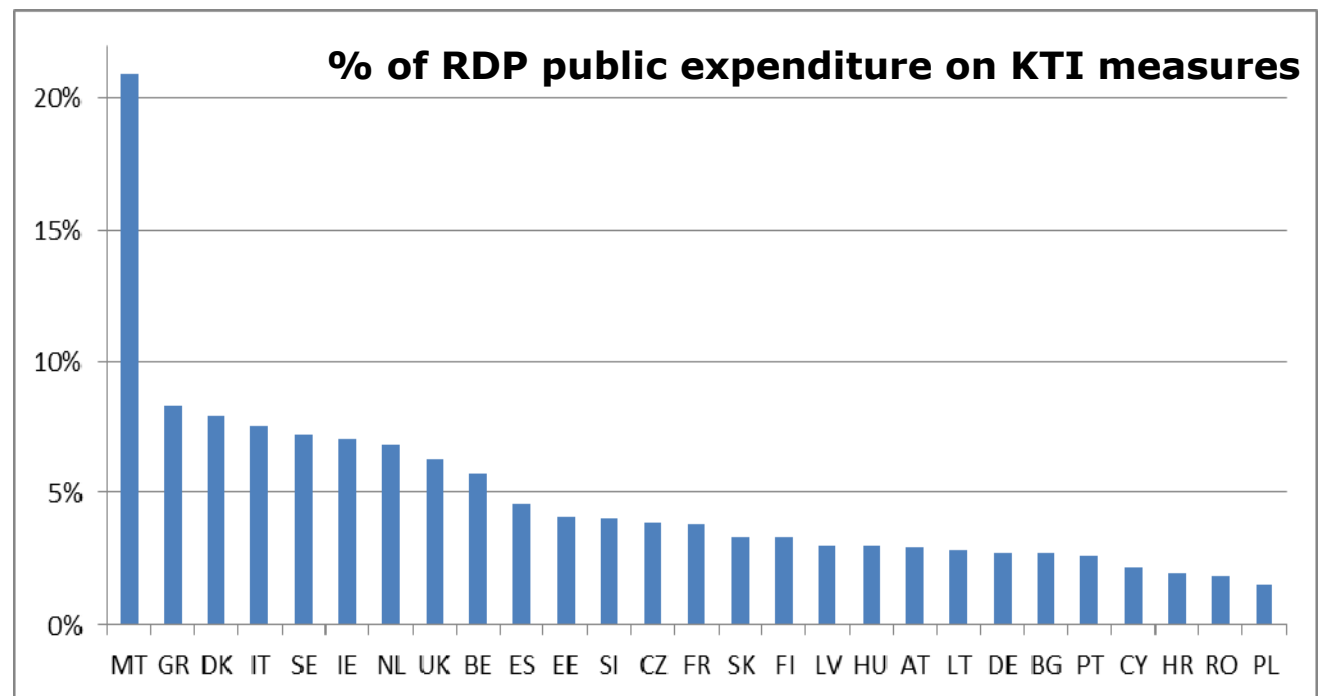
4.2% of total expenditure under the measures for KT, Advisory Services and Cooperation

13 350 cooperation projects supported

Nearly 3.6 million participants trained

1 983 Operational Groups under the EIP

## *Priority 1: Knowledge transfer and Innovation*



Figures show the targets set in the RDPs by Member States and regions

# Target for Productive Farm Investments

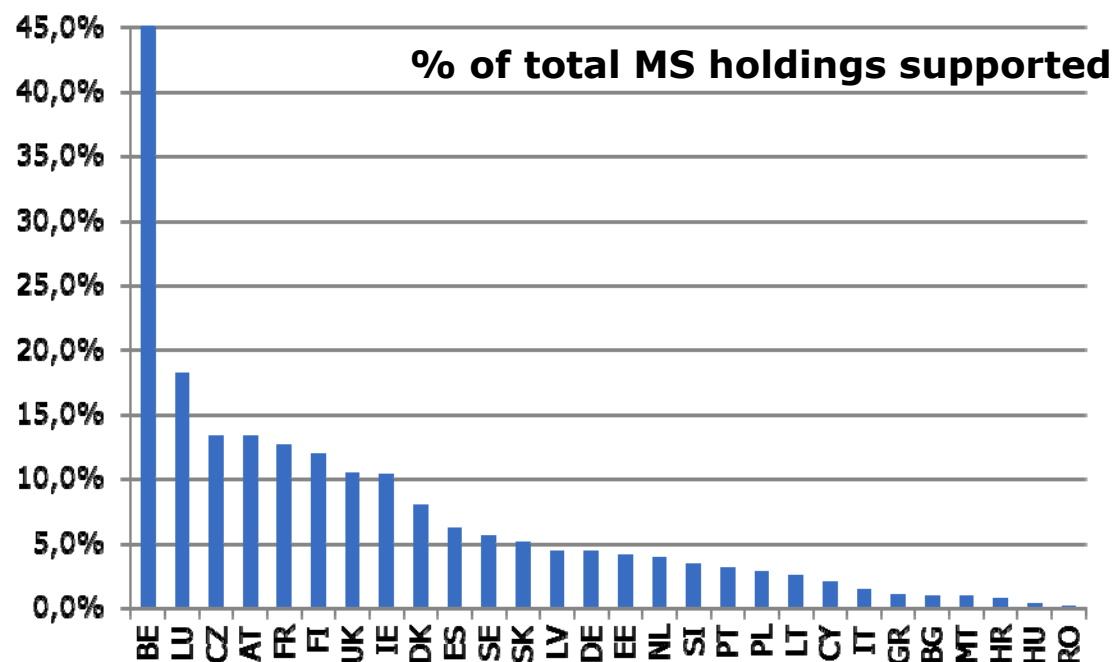
*FA2a: Facilitating farm restructuring and modernisation*

## Key Facts and Figures:

342 000 holdings supported

2.7% of holdings supported

Ranging from 47.3% BE to  
0.1% RO



Figures show the targets set in the RDPs by Member States and regions

*NB: % of holding supported is based on all EU farms. If it were only based on commercial farms, 7.2% of holdings would receive support*

# Target for Job Creation (non-agricultural)

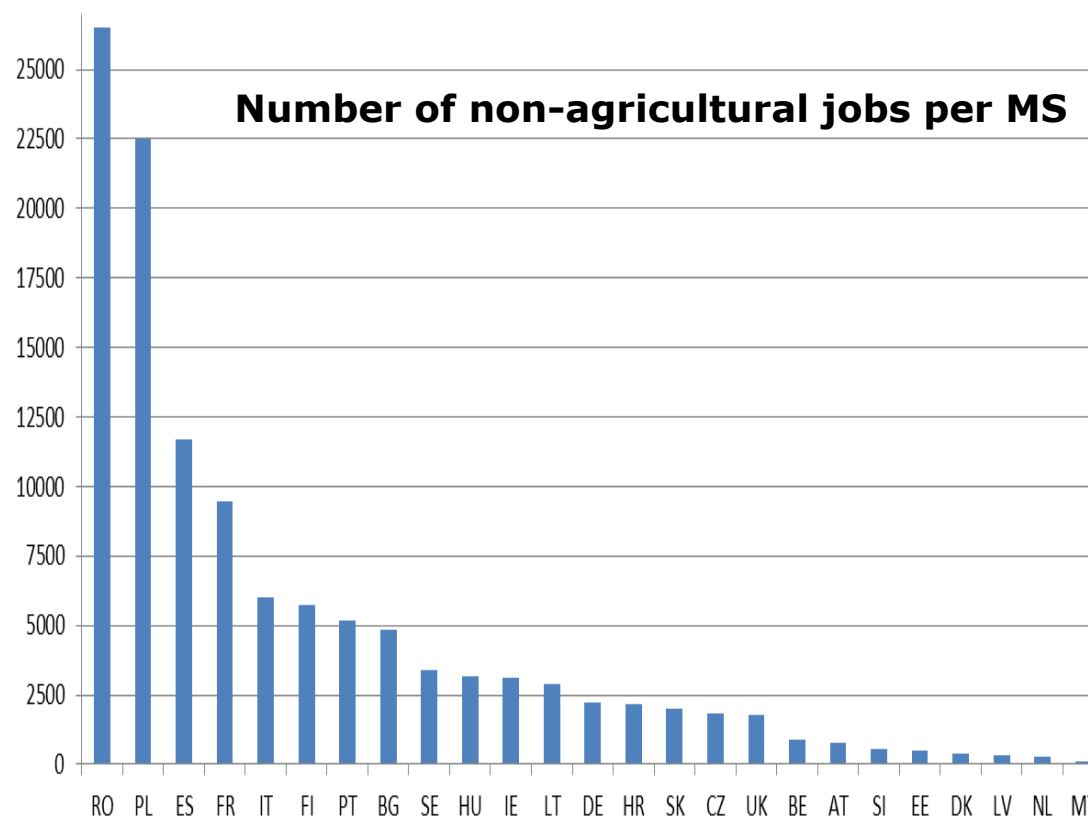
## Key facts and figures:

In total 118 000 non-agricultural new jobs directly created, of which:

76 000 in relation to diversification actions and creation and development of small enterprises

48 000 from actions aiming at fostering local development in rural areas

*FA6ab: Diversification, creation and development of small enterprises, job creation and local development*



Figures show the targets set in the RDPs by Member States and regions



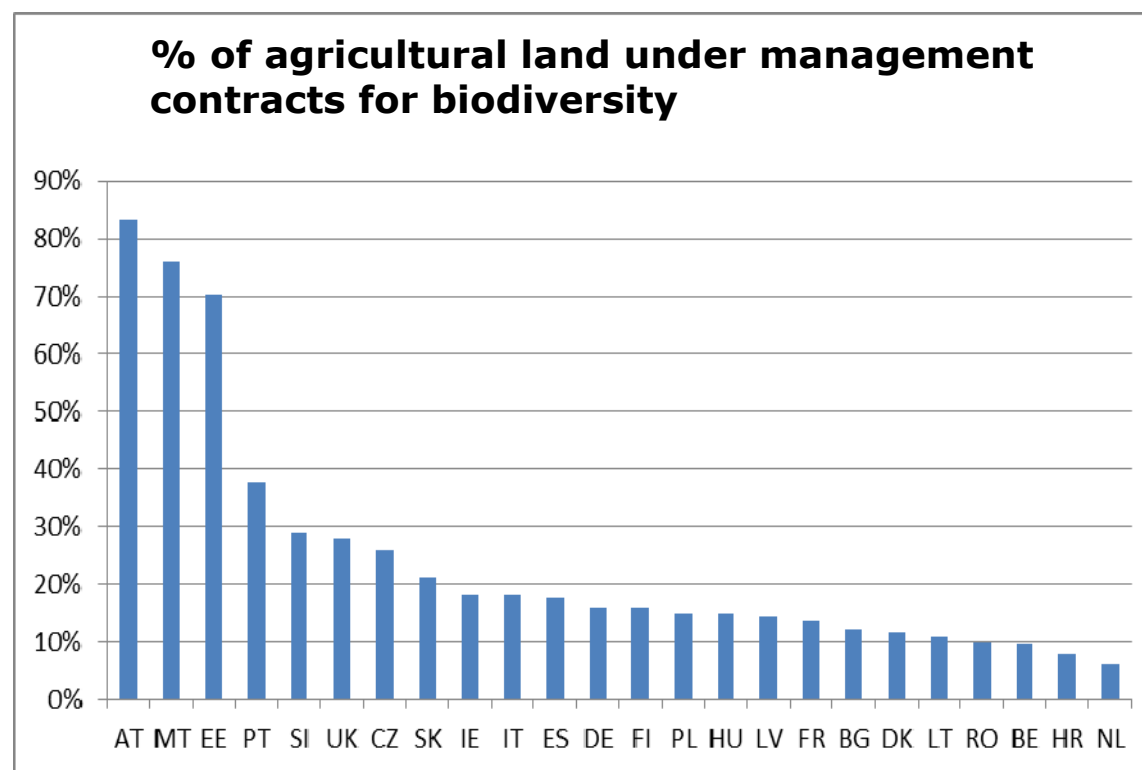
# Target for Biodiversity

## Key facts and figures

*FA4a: restoring preserving and enhancing biodiversity*

19% of total agricultural land under management contracts supporting biodiversity and/or landscapes

7.6% of total forest area under management contracts supporting biodiversity



Figures show the targets set in the RDPs by Member States and regions

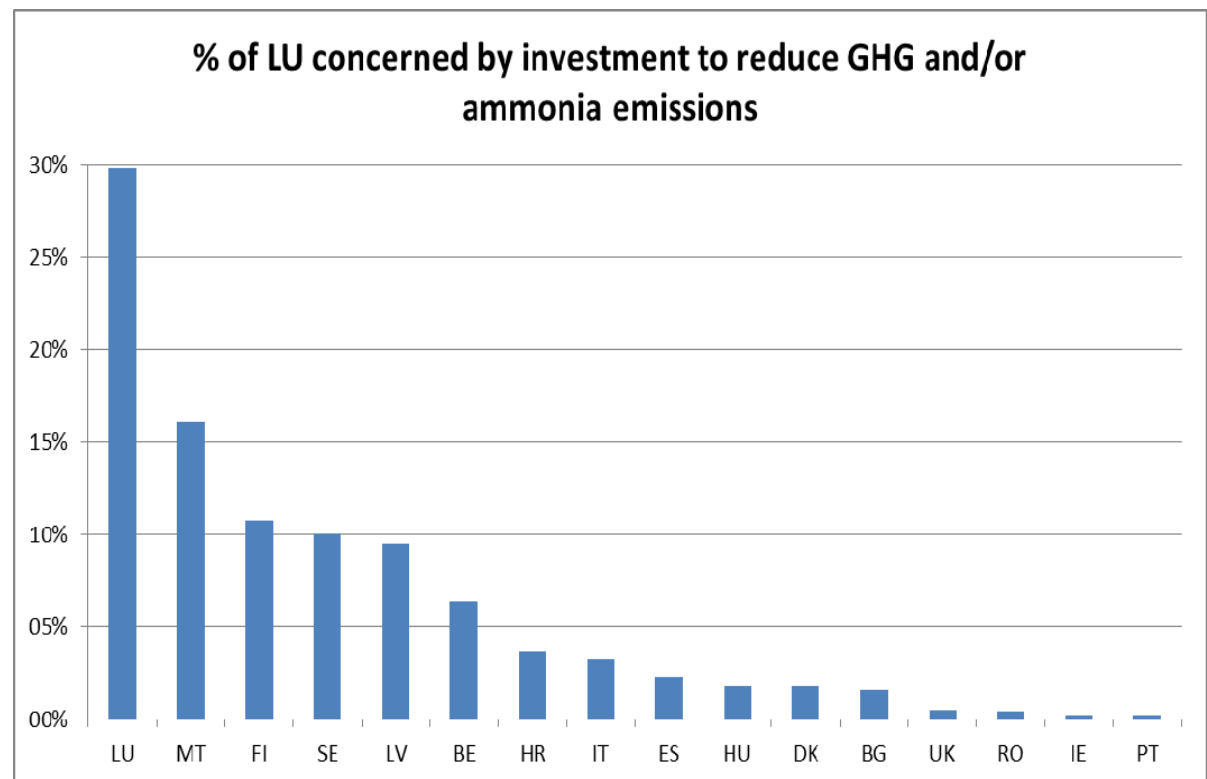
# Targets linked to Climate Change

*FA5d: reducing greenhouse gases and ammonia emissions from agriculture*

## Key facts and figures:

5.4% of total agricultural land under management contracts targeting reduction of GHG and/or ammonia emissions

2.4 % of total LU concerned by investments in live-stock management in view of reducing GHG and/or ammonia emissions



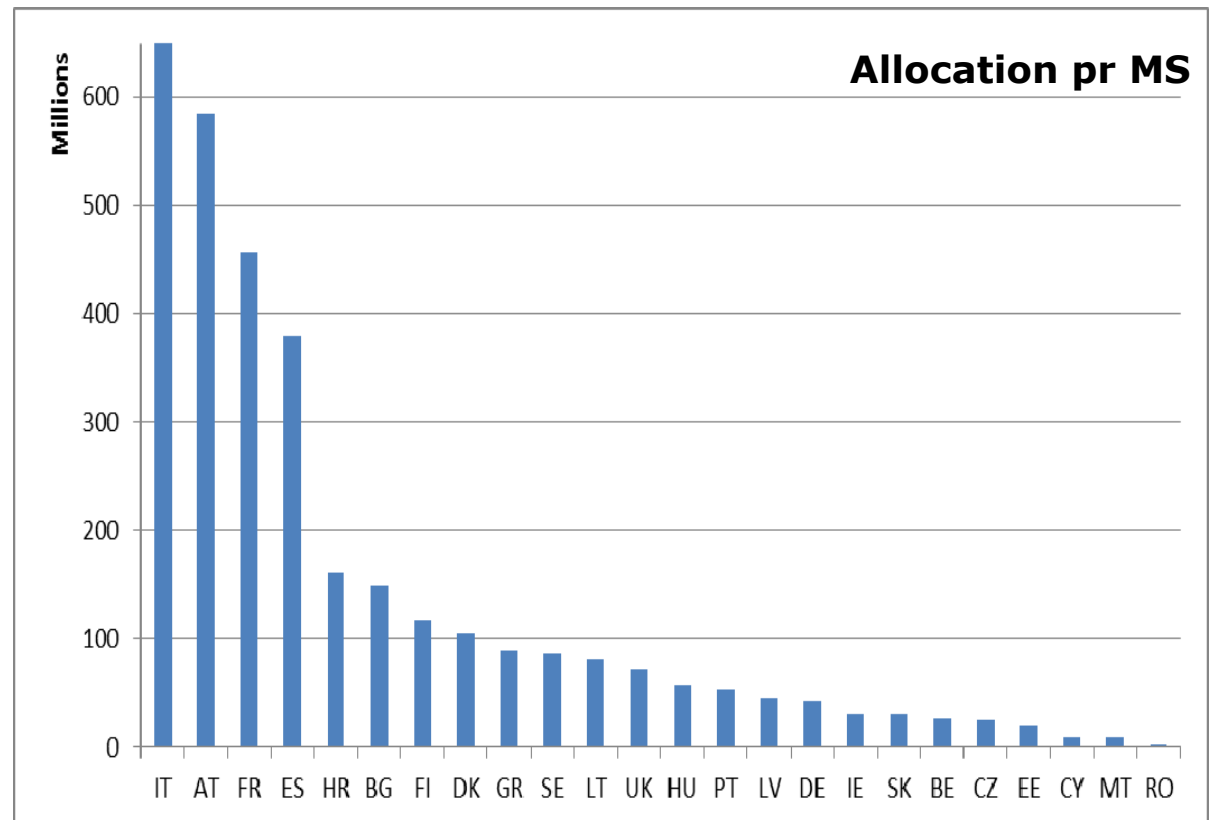
Figures show the targets set in the RDPs by Member States and regions

# Targets for Renewable Energy

*FA5c: supply of renewable sources of energy*

## Key facts and figures:

€ 3.3 Billion total  
investment in renewable  
energy production



Figures show the targets set in the RDPs by Member States and regions

Thank you for your attention