



**Weekly price report on Pig carcass (Class S, E and R) and Piglet prices in the EU**



**Disclaimer**

*Please note that EU prices for pig meat, are averages of the national prices communicated by Member States weighted with coefficients. The coefficients attributed to Member States' prices were modified on 1<sup>st</sup> July 2024; from this date, the coefficient used for each Member State corresponds to this Member State's share in volume in total EU production over the last three years. This affects EU prices for pig meat.*

Week 2024 → <b>29</b>		Unit	Variation 1 week	Variation 4 weeks	Variation 1 year	Comparison with average 2019/2023
<b>Carcass Class S</b>	<b>222.5</b>	EUR / 100 kg carcass weight	→ - 0.1%	→ - 0.5%	↓ - 11.5%	
<b>Carcass Class E</b>	<b>214.5</b>		→ + 0.0%	↓ - 2.8%	↓ - 14.0%	
<b>Carcass Class R</b>	<b>234.0</b>		→ + 0.0%	→ - 0.2%	↓ - 11.2%	
<b>Weighted Average (Class S &amp; E)</b>	<b>219.9</b>		→ - 0.1%	↓ - 1.3%	↓ - 12.4%	+ 17.6%
<b>Piglet</b>	<b>72.1</b>	EUR / head	↓ - 2.8%	↓ - 10.2%	↓ - 17.0%	+ 32.4%

# Meat Market Observatory - Pig



EUROPEAN COMMISSION

Directorate-General for Agriculture and Rural Development

EU Animal Products

Last update : 24/07/2024



## EU PRICES OF CLASS S in EURO/100 kg carcass



Source: Commission Implementing Regulation (EU) 2017/1185

S			BE	BG	CZ	DK	DE	EE	GR	ES	FR	HR	IE	IT	CY	LV	LT	LU	HU	MT	NL	AT	PL	PT	RO	SI	SK	FI	SE
	Week beginning	Week N°	EUR	EUR	EUR	EUR	EUR	EUR	EUR	EUR	EUR	EUR	EUR	EUR	EUR	EUR	EUR	EUR	EUR	EUR	EUR	EUR	EUR	EUR	EUR	EUR	EUR	EUR	EUR
29/01/2024	5	201.21			206.60	186.20	213.71	c	232.70	208.29	201.00	206.43	191.21			213.13	210.24	c	209.77	(*)	171.73	228.20	204.52	216.90	216.52	231.57	216.88	223.09	230.67
05/02/2024	6	201.50			205.58	184.82	220.07	c	234.13	208.36	201.00	214.42	191.11			210.06	207.62	c	206.82	(*)	171.82	230.95	209.57	216.90	212.88	231.29	207.44	221.44	234.25
12/02/2024	7	210.74			210.52	184.99	226.84	c	235.82	210.27	203.00	218.78	194.92			217.35	211.74	c	216.07	224.83	178.00	237.22	217.20	219.22	210.64	239.71	209.32	221.28	232.01
19/02/2024	8	213.88			211.33	187.00	228.88	c	236.99	214.30	208.00	216.27	198.61			223.21	219.36	c	224.82	226.37	182.77	240.08	220.64	223.07	211.22	244.00	210.77	221.29	235.14
26/02/2024	9	214.52			215.44	188.48	232.67	c	(*)	217.71	213.00	217.61	198.55			224.22	219.30	c	225.47	226.59	182.76	241.91	222.09	227.07	219.43	245.72	221.00	221.09	235.21
04/03/2024	10	219.92			218.75	190.36	234.24	c	242.32	218.60	217.00	222.44	199.02			230.90	222.21	c	229.03	226.41	185.61	246.94	222.50	230.75	227.65	249.01	223.45	220.77	235.78
11/03/2024	11	219.10			219.70	191.24	234.56	c	243.10	222.72	222.00	226.10	199.04			230.12	226.19	c	229.09	226.26	185.60	247.64	223.51	234.75	231.06	250.90	223.32	221.27	235.58
18/03/2024	12	220.43			219.72	191.48	234.31	c	244.53	229.38	224.00	225.39	199.20			230.88	224.76	c	228.98	226.57	185.60	247.74	222.13	237.75	232.85	251.35	226.05	222.17	233.01
25/03/2024	13	220.77			219.43	192.27	234.41	c	244.79	232.57	226.00	217.40	203.22			232.86	223.38	c	228.43	225.96	185.61	247.25	222.55	239.99	232.74	250.75	226.52	221.26	229.35
01/04/2024	14	220.38			218.99	191.99	234.05	c	239.59	229.01	226.00	230.11	203.28			232.61	220.75	c	227.21	226.21	183.60	247.54	226.17	239.99	230.36	254.47	221.04	222.10	229.22
08/04/2024	15	219.73			219.21	191.97	234.39	c	236.99	228.85	225.00	223.46	207.38			232.81	219.67	c	224.88	226.64	183.60	247.53	232.54	239.99	225.57	248.81	222.71	221.78	229.85
15/04/2024	16	220.22			219.83	191.79	234.11	c	241.15	228.99	225.00	227.24	209.61			231.46	218.95	c	222.51	225.91	183.60	247.54	230.10	239.99	218.32	251.21	223.47	222.13	228.30
22/04/2024	17	220.68			217.71	191.57	234.14	c	240.89	229.44	225.00	225.71	214.21			236.61	222.24	c	223.80	226.45	183.60	248.01	226.99	239.99	218.00	247.71	223.29	221.97	228.01
29/04/2024	18	220.55			220.56	189.05	234.31	c	240.63	229.09	225.00	209.51	214.84			231.36	219.22	c	227.64	225.85	183.61	248.42	226.80	239.99	220.55	251.17	221.75	221.93	226.01
06/05/2024	19	220.54			221.76	188.35	234.40	c	240.11	228.48	225.00	213.53	215.44			231.14	220.93	c	228.42	227.69	183.61	247.96	227.76	239.99	218.86	250.39	223.19	221.43	227.02
13/05/2024	20	220.54			223.71	188.71	234.26	c	240.37	228.97	(*)	213.53	217.39			233.27	217.34	c	228.59	226.76	183.60	248.05	232.13	239.99	218.43	250.97	223.32	222.14	227.77
20/05/2024	21	223.38			224.87	188.57	234.91	c	240.24	229.50	223.00	222.70	218.64			233.79	219.56	c	228.47	227.05	186.17	248.13	235.23	239.99	218.92	244.95	223.50	222.03	229.45
27/05/2024	22	223.23			224.39	189.13	234.95	c	239.85	229.07	223.00	224.55	218.97			231.12	220.52	c	229.18	(*)	188.80	248.13	235.59	239.99	221.29	250.55	223.34	219.88	233.92
03/06/2024	23	223.26			225.13	190.22	234.56	c	239.59	229.51	223.00	229.03	219.71			230.16	216.73	c	230.97	227.00	188.82	247.53	234.58	239.99	223.09	252.21	222.83	220.33	236.87
10/06/2024	24	223.41			225.10	188.35	234.59	c	239.85	229.74	223.00	211.36	220.00			231.77	218.86	c	228.94	227.31	188.72	248.37	230.00	239.99	224.69	268.30	224.53	219.91	240.11
17/06/2024	25	222.90			223.76	186.88	234.44	c	(*)	231.59	224.00	211.03	220.42			240.95	225.48	c	229.06	226.96	188.75	247.25	229.31	242.44	227.29	250.71	223.83	219.91	240.44
24/06/2024	26	223.41			222.53	187.04	234.47	c	(*)	232.86	226.00	213.35	221.03			236.71	221.64	c	229.59	226.64	188.83	247.92	229.61	244.13	232.20	251.89	224.93	220.16	237.83
01/07/2024	27	223.04			219.98	187.03	228.23	c	(*)	234.72	226.00	224.50	223.26			234.64	222.08	c	230.98	226.73	186.09	245.35	227.47	246.13	238.22	250.17	217.66	218.40	237.34
08/07/2024	28	213.32			211.96	187.00	224.75	c	(*)	234.96	229.00	234.38	226.92			226.69	214.81	c	223.61	227.44	179.35	241.72	221.96	246.13	238.07	246.01	218.06	218.65	236.21
15/07/2024	29	(*)			211.62	186.98	224.12	c	(*)	234.79	230.00	224.29	229.04			225.05	217.43	c	(*)	227.31	179.32	241.44	219.80	246.13	238.91	248.38	218.00	218.94	232.73

EU (weighted avg.)	EUR	Compare to previous week
204.37	→	- 0.0%
205.87	→	+ 0.7%
209.91	→	+ 2.0%
213.31	→	+ 1.6%
216.17	→	+ 1.3%
218.37	→	+ 1.0%
220.44	→	+ 0.9%
222.64	→	+ 1.0%
223.91	→	+ 0.6%
222.76	↘	- 0.5%
222.85	→	+ 0.0%
222.63	→	- 0.1%
222.65	→	+ 0.0%
222.37	→	- 0.1%
222.21	→	- 0.1%
222.62	→	+ 0.2%
223.24	→	+ 0.3%
223.43	→	+ 0.1%
223.60	→	+ 0.1%
223.26	→	- 0.2%
223.69	→	+ 0.2%
224.44	→	+ 0.3%
224.60	→	+ 0.1%
222.67	↘	- 0.9%
222.48	→	- 0.1%

UK
EUR

	BE	BG	CZ	DK	DE	EE	GR	ES	FR	HR	IE	IT	CY	LV	LT	LU	HU	MT	NL	AT	PL	PT	RO	SI	SK	FI	SE
Change 1 week			- 0.2%	- 0.0%	- 0.3%			- 0.1%	+ 0.4%	- 4.3%	+ 0.9%			- 0.7%	+ 1.2%			- 0.1%	- 0.0%	- 0.1%	- 1.0%	+ 0.0%	+ 0.4%	+ 1.0%	- 0.0%	+ 0.1%	- 1.5%
Change 4 weeks			- 5.4%	+ 0.1%	- 4.4%			+ 1.4%	+ 2.7%	+ 6.3%	+ 3.9%			- 6.6%	- 3.6%			+ 0.2%	- 5.0%	- 2.3%	- 4.1%	+ 1.5%	+ 5.1%	- 0.9%	- 2.6%	- 0.4%	- 3.2%
Change 1 year			- 16.6%	- 11.3%	- 15.3%			- 8.3%	- 8.4%	- 11.7%	+ 2.7%			- 15.8%	- 14.0%			- 0.1%	- 22.7%	- 12.6%	- 15.5%	- 7.9%	- 11.7%	- 11.4%	- 16.4%	- 4.0%	+ 2.5%

EU (weighted avg.)
→ - 0.1%
→ - 0.5%
↓ - 11.5%

(\*) Data unavailable

c Confidential

## Meat Market Observatory - Pig



EUROPEAN COMMISSION  
Directorate-General for Agriculture and Rural Development

Last update : 24/07/2024

E3. Animal Products



### EU PRICES OF CLASS E in EURO/100 kg carcass



Source: Commission Implementing Regulation (EU) 2017/1185

E	Week beginning	Week n°	Member States																								EU (weighted avg.)	UK				
			BE	BG	CZ	DK	DE	EE	GR	ES	FR	HR	IE	IT	CY	LV	LT	LU	HU	MT	NL	AT	PL	PT	RO	SI			SK	FI	SE	
	29/01/2024	5	194.41	254.67	202.01	183.12	210.45	c	232.70	198.38	193.00	193.97	190.98		254.93	221.48	209.80	c	204.31	(*)	170.59	218.74	202.11	217.96	216.29	214.44	219.59	214.48	227.93	EUR	200.85	↓ -0.2%
	05/02/2024	6	194.90	252.84	201.06	181.19	217.02	c	234.13	199.21	193.00	197.95	190.61		254.34	219.77	209.62	c	199.67	(*)	170.68	220.27	207.72	217.96	213.40	214.59	216.80	213.84	231.15	EUR	203.29	→ +1.2%
	12/02/2024	7	204.22	252.66	205.83	181.77	223.90	c	235.82	199.94	195.00	204.14	194.56		255.12	229.30	216.95	c	210.31	224.15	176.86	227.37	215.60	220.02	210.49	222.24	225.69	213.93	229.00	EUR	208.21	→ +2.4%
	19/02/2024	8	207.49	254.96	208.89	183.78	225.70	c	236.99	204.47	199.00	207.88	197.85		255.67	231.71	223.04	c	219.18	225.58	181.63	229.69	219.20	223.90	211.23	226.62	228.59	213.31	230.86	EUR	211.52	→ +1.6%
	26/02/2024	9	207.56	255.04	210.63	185.13	229.31	c	(*)	207.50	205.00	208.20	198.04		255.99	231.93	221.29	c	220.70	225.39	181.62	232.96	219.49	227.90	218.00	227.88	227.86	214.20	231.37	EUR	213.78	→ +1.1%
	04/03/2024	10	213.26	255.45	214.13	186.73	230.91	c	242.32	211.19	209.00	212.00	198.52		255.36	237.70	225.39	c	224.83	225.07	184.47	236.22	220.54	231.90	224.54	231.13	232.27	211.93	232.22	EUR	216.20	→ +1.1%
	11/03/2024	11	212.59	255.59	215.78	187.49	231.10	c	243.10	214.71	213.00	214.00	198.91		255.73	236.91	227.44	c	224.64	225.64	184.46	237.24	221.36	235.90	229.07	231.51	232.29	213.53	230.76	EUR	217.41	→ +0.6%
	18/03/2024	12	213.84	255.67	214.62	187.60	230.80	c	244.53	220.18	216.00	210.00	198.96		255.82	240.53	227.05	c	223.94	225.52	184.46	236.86	219.76	238.90	230.53	233.12	234.22	214.31	228.69	EUR	218.05	→ +0.3%
	25/03/2024	13	214.20	255.63	214.72	189.05	231.13	c	244.79	228.22	218.00	209.19	202.68		255.89	239.37	227.47	c	222.04	225.25	184.47	237.58	220.30	240.90	229.79	232.03	234.38	213.43	225.95	EUR	219.47	→ +0.7%
	01/04/2024	14	213.80	255.06	215.47	189.45	230.90	c	239.59	218.81	219.00	216.00	202.89		255.97	237.72	227.96	c	221.32	225.96	182.46	237.75	224.12	240.90	226.45	236.89	233.32	214.65	225.66	EUR	218.67	→ -0.4%
	08/04/2024	15	214.29	255.25	215.22	188.62	230.97	c	(*)	219.40	218.00	230.84	206.83		256.41	238.40	226.04	c	219.09	225.97	182.46	238.20	230.85	240.90	223.93	231.04	235.25	215.73	226.37	EUR	219.76	→ +0.5%
	15/04/2024	16	213.93	254.66	215.04	188.44	230.62	209.68	241.15	218.69	218.00	211.53	209.05		256.34	236.56	224.21	c	217.26	225.39	182.46	237.23	228.43	240.90	218.14	230.99	232.02	214.96	224.43	EUR	218.92	→ -0.4%
	22/04/2024	17	214.19	254.12	214.34	187.82	230.48	214.71	240.89	220.97	218.00	210.70	213.91		257.36	241.76	227.33	c	217.22	224.98	182.46	238.16	224.94	240.90	217.42	229.00	231.42	214.51	224.23	EUR	218.82	→ -0.0%
	29/04/2024	18	214.02	256.39	216.94	185.57	230.79	213.46	240.63	219.13	218.00	207.54	214.59		259.43	236.38	227.55	c	222.49	224.89	182.47	238.01	224.75	240.90	220.07	232.24	237.43	214.41	222.51	EUR	218.80	→ -0.0%
	06/05/2024	19	214.17	254.67	216.91	185.26	231.27	c	240.11	218.69	218.00	209.31	215.12		267.86	237.31	227.67	c	223.23	225.54	182.47	239.36	225.79	241.28	216.96	232.13	233.87	213.99	224.20	EUR	219.08	→ +0.1%
	13/05/2024	20	214.26	254.63	219.79	185.36	231.11	c	240.37	219.09	(*)	209.31	216.65		269.59	236.90	226.88	c	223.93	225.45	182.46	236.92	230.45	241.28	218.10	231.67	238.43	214.78	224.77	EUR	219.87	→ +0.4%
	20/05/2024	21	217.61	254.63	219.94	185.62	231.31	212.12	240.24	220.03	215.00	210.25	218.11		270.29	238.76	228.50	c	224.51	225.91	185.03	237.68	233.22	241.28	217.63	225.17	235.91	214.07	225.92	EUR	220.68	→ +0.4%
	27/05/2024	22	217.67	254.81	219.37	185.65	231.12	210.79	239.85	218.07	215.00	209.36	218.74		270.84	236.02	230.30	c	225.67	(*)	187.66	237.47	234.12	241.28	219.02	232.59	232.78	212.95	230.70	EUR	221.00	→ +0.1%
	03/06/2024	23	217.45	253.93	221.16	187.41	231.22	213.27	239.59	219.75	215.00	215.69	219.17		271.03	237.89	229.92	c	226.13	225.47	187.68	237.15	232.62	241.28	221.21	235.08	234.09	212.90	233.35	EUR	221.26	→ +0.1%
	10/06/2024	24	217.70	(*)	220.28	185.26	230.71	214.82	239.85	218.78	215.00	209.36	219.39		270.71	236.13	229.84	c	224.76	225.29	187.58	240.19	228.12	241.28	221.79	233.10	235.38	211.59	236.29	EUR	220.31	→ -0.4%
	17/06/2024	25	218.22	254.08	218.72	184.20	230.87	214.09	(*)	221.41	216.00	208.34	220.03		270.45	241.46	230.30	c	224.27	225.75	187.61	236.49	227.32	243.51	224.65	234.56	235.44	211.24	237.33	EUR	220.64	→ +0.2%
	24/06/2024	26	217.08	(*)	217.92	184.22	230.77	213.77	(*)	223.93	219.00	210.19	220.98		270.40	243.24	231.59	c	224.75	225.71	187.69	237.32	227.87	245.12	228.32	233.74	235.36	212.56	234.55	EUR	221.37	→ +0.3%
	01/07/2024	27	217.68	253.90	216.13	184.21	224.49	216.34	(*)	223.69	219.00	211.77	223.03		270.25	241.97	230.65	c	225.90	225.92	184.95	234.26	225.78	247.12	235.05	233.61	235.50	209.88	233.91	EUR	217.46	→ -1.8%
	08/07/2024	28	208.04	253.68	207.61	184.18	221.27	208.46	(*)	221.09	223.00	203.42	226.51		269.71	234.58	221.75	c	220.02	226.04	178.21	230.65	219.86	247.12	235.24	231.25	228.41	210.97	232.63	EUR	214.45	→ -1.4%
	15/07/2024	29	(*)	253.51	206.41	184.17	220.29	c	(*)	224.91	224.00	201.51	228.86		269.74	232.58	221.73	c	(*)	225.75	178.18	231.94	218.00	247.12	235.94	231.67	230.65	210.23	230.04	EUR	214.52	→ +0.0%

	BE	BG	CZ	DK	DE	EE	GR	ES	FR	HR	IE	IT	CY	LV	LT	LU	HU	MT	NL	AT	PL	PT	RO	SI	SK	FI	SE	EU (weighted avg.)
Change 1 week		-0.1%	-0.6%	-0.0%	-0.4%			+1.7%	+0.4%	-0.9%	+1.0%		+0.0%	-0.9%	-0.0%			-0.1%	-0.0%	+0.6%	-0.8%	+0.0%	+0.3%	+0.2%	+1.0%	-0.4%	-1.1%	→ +0.0%
Change 4 weeks		-0.2%	-5.6%	-0.0%	-4.6%			+1.6%	+3.7%	-3.3%	+4.0%		-0.3%	-3.7%	-3.7%			+0.0%	-5.0%	-1.9%	-4.1%	+1.5%	+5.0%	-1.2%	-2.0%	-0.5%	-3.1%	→ -2.8%
Change 1 year		-7.3%	-16.8%	-11.1%	-15.6%			-9.9%	-8.2%	-21.9%	+2.5%		+4.9%	-15.9%	-16.9%			-0.5%	-22.8%	-12.2%	-15.7%	-7.6%	-12.3%	-11.9%	-11.2%	-4.3%	+3.2%	↓ -14.0%

(\*) Data unavailable

c Confidential



EU PRICES OF CLASS R in EURO/100 kg carcass



Source: Commission Implementing Regulation (EU) 2017/1185

R	BE	BG	CZ	DK	DE	EE	GR	ES	FR	HR	IE	IT	CY	LV	LT	LU	HU	MT	NL	AT	PL	PT	RO	SI	SK	FI	SE	EU (weighted avg.)	UK
	EUR	EUR	EUR	EUR	EUR	EUR	EUR	EUR	EUR	EUR	EUR	EUR	EUR	EUR	EUR	EUR	EUR	EUR	EUR	EUR	EUR	EUR	EUR	EUR	EUR	EUR	EUR	EUR	EUR
Week beginning	Week N°																												Compare to previous week
29/01/2024	5			166.39		181.19		232.70	206.57				256.85			186.82	c									212.58		248.62	↔ - 2.0%
05/02/2024	6			166.16		187.26		234.13	208.06				257.24			203.73	c									205.57		249.38	→ + 0.3%
12/02/2024	7			172.28		195.70		235.82	208.18				251.50			207.94	c									189.90		244.86	↔ - 1.8%
19/02/2024	8			184.71		197.81		236.99	211.69				261.25			204.45	c									214.51		253.71	→ + 3.6%
26/02/2024	9			171.02		200.10		(*) 216.28					256.73			214.87	c									223.08		250.30	↔ - 1.3%
04/03/2024	10			179.80		203.79		242.32	221.12				252.31			219.85	c									223.24		247.13	↔ - 1.3%
11/03/2024	11			172.40		202.75		243.10	222.60				249.76			221.28	c									215.22		244.98	↔ - 0.9%
18/03/2024	12			204.93		202.00		244.53	226.52				254.95			220.01	c									222.56		249.83	→ + 2.0%
25/03/2024	13			181.65		204.67	c	244.79	230.83				258.78			218.31	c									202.83		253.47	→ + 1.5%
01/04/2024	14			180.47		205.56	c	239.59	226.28				258.70			217.86	c									199.58		253.03	↔ - 0.2%
08/04/2024	15			223.70		201.45	(*) (*)	227.93					258.10			221.40	c									222.86		252.64	↔ - 0.2%
15/04/2024	16			170.80		203.27	c	241.15	225.20				262.16			217.87	c									222.56		255.85	→ + 1.3%
22/04/2024	17			182.61		201.39	(*)	240.89	227.23				256.68			218.12	c									205.29		251.21	↔ - 1.8%
29/04/2024	18			200.41		204.96	c	240.63	226.50				258.06			217.16	c									c		252.59	→ + 0.6%
06/05/2024	19			176.40		201.77	(*)	240.11	225.62				249.87			220.23	c									223.76		245.28	↔ - 2.9%
13/05/2024	20			191.69		202.62	(*)	240.37	227.13				249.87			218.60	c									c		245.47	↔ + 0.1%
20/05/2024	21			184.19		203.87	(*)	240.24	225.86				243.43			218.35	c									212.32		239.85	↔ - 2.3%
27/05/2024	22			187.25		202.73	c	239.85	226.46				242.98			220.81	c									c		239.50	↔ - 0.1%
03/06/2024	23			199.54		203.73	(*)	239.59	227.09				249.87			221.13	c									226.82		245.55	→ + 2.5%
10/06/2024	24			181.30		204.98	(*)	239.85	227.72				238.17			217.51	c									225.70		235.56	↔ - 4.1%
17/06/2024	25			183.55		204.41	(*) (*)	227.97					236.83			217.14	c									225.26		234.41	↔ - 0.5%
24/06/2024	26			181.98		205.04	(*) (*)	230.24					239.27			223.11	c									(*)		236.72	→ + 1.0%
01/07/2024	27			179.30		195.77	(*) (*)	232.41					236.14			219.04	c									c		234.03	↔ - 1.1%
08/07/2024	28			193.65		196.78	(*) (*)	229.79					(*)			216.38	c									c		233.96	↔ - 0.0%
15/07/2024	29			177.57		195.97	c (*)	232.41					(*)			216.91	c									c		234.02	↔ + 0.0%

	BE	BG	CZ	DK	DE	EE	GR	ES	FR	HR	IE	IT	CY	LV	LT	LU	HU	MT	NL	AT	PL	PT	RO	SI	SK	FI	SE	EU (weighted avg.)
Change 1 week			- 8.3%		- 0.4%			+ 1.1%							+ 0.2%													→ + 0.0%
Change 4 weeks			- 3.3%		- 4.1%			+ 1.9%							- 0.1%													→ - 0.2%
Change 1 year			- 21.1%		- 15.3%			- 7.4%							- 12.0%													↓ - 11.2%

(\*) Data unavailable

c Confidential

# Meat Market Observatory - Pig



EUROPEAN COMMISSION  
Directorate-General for Agriculture and Rural Development  
E3. Animal Products

Last update : 24/07/2024



## EU PRICES OF PIGLET in EUR / head



Source: Commission Implementing Regulation (EU) 2017/1185

Piglet		BE	BG	CZ	DK	DE	EE	GR	ES	FR	HR	IE	IT	CY	LV	LT	LU	HU	MT	NL	AT	PL	PT	RO	SI	SK	FI	SE	
Week beginning	Week N°	EUR	EUR	EUR	EUR	EUR	EUR	EUR	EUR	EUR	EUR	EUR	EUR	EUR	EUR	EUR	EUR	EUR	EUR	EUR	EUR	EUR	EUR	EUR	EUR	EUR	EUR	EUR	EUR
29/01/2024	5	86.50		c	60.50	78.70	(*)		87.30	60.00	63.97		114.07		72.97			71.11		63.75			73.00				85.95	84.28	
05/02/2024	6	88.50		c	60.49	79.90	c		87.30	59.75	82.80		115.87		78.81			(*)		64.50			77.00				84.62	89.16	
12/02/2024	7	91.50		c	60.50	83.90	(*)		88.50	60.25	92.00		117.67		78.35			77.45		67.25			77.00				87.17	88.96	
19/02/2024	8	91.50		80.11	62.25	86.90	c		91.05	60.50	92.00		119.47		78.27			74.96		70.00			77.00				85.72	90.18	
26/02/2024	9	96.50		c	62.25	88.50	c		93.42	61.25	54.99		121.27		84.47			74.08		71.75			80.00				84.47	90.35	
04/03/2024	10	98.50		c	63.59	90.50	c		96.16	61.25	61.09		123.07		85.53			(*)		74.00			80.00				87.22	90.46	
11/03/2024	11	99.50		c	63.57	90.50	c		97.37	65.00	80.76		124.87		90.39			75.93		74.75			83.00				84.97	90.30	
18/03/2024	12	100.50		c	63.69	90.40	c		98.90	65.00	80.76		126.37		91.71			78.51		76.00			83.00				85.54	88.92	
25/03/2024	13	100.50		c	63.69	90.60	c		100.06	65.50	63.01		128.27		88.21			(*)		76.00			83.00				84.03	88.65	
01/04/2024	14	100.50		c	63.69	90.50	(*)		100.69	66.75	61.35		129.52		89.19			76.05		76.00			86.40				85.34	90.64	
08/04/2024	15	100.50		c	63.68	90.70	(*)		100.28	66.25	87.86		130.31		90.03			(*)		76.00			86.40				85.94	88.87	
15/04/2024	16	99.50		86.07	63.80	90.90	(*)		98.77	67.50	79.35		130.48		88.43			88.83		76.00			86.40				86.34	89.41	
22/04/2024	17	97.50		82.21	63.81	89.30	c		97.37	68.00	98.85		130.48		88.16			91.51		75.50			86.40				87.59	86.55	
29/04/2024	18	94.50		c	61.95	90.70	c		95.35	69.25	98.85		130.48		90.04			78.64		73.25			86.40				85.88	91.42	
06/05/2024	19	89.50		c	61.93	90.90	c		90.80	69.25	79.98		129.58		87.22			(*)		71.00			90.00				87.07	88.02	
13/05/2024	20	89.50		81.03	61.92	90.90	(*)		86.44	67.75	79.98		129.58		87.92			87.88		68.75			90.00				86.15	89.27	
20/05/2024	21	88.50		c	62.19	90.90	c		82.82	64.75	79.98		128.58		87.92			85.05		67.50			87.00				86.36	90.54	
27/05/2024	22	86.50		c	62.20	91.00	(*)		81.19	66.75	72.07		126.98		86.39			83.62		67.00			87.00				85.24	92.44	
03/06/2024	23	85.50		c	62.20	90.90	(*)		80.23	66.75	97.26		125.23		86.72			(*)		66.50			87.00				85.60	90.75	
10/06/2024	24	82.25		c	62.20	90.70	c		79.64	66.75	83.68		123.13		84.81			77.37		65.50			87.00				86.32	94.12	
17/06/2024	25	84.50		c	61.00	90.90	c		79.05	66.75	84.52		118.53		71.19			74.05		64.75			87.00				86.20	92.26	
24/06/2024	26	82.50		c	61.00	90.60	(*)		79.05	66.75	94.67		116.23		75.38			(*)		63.50			87.00				87.14	94.21	
01/07/2024	27	79.50		c	61.00	85.30	(*)		77.44	66.75	92.80		113.93		77.29			72.32		59.75			85.00				84.43	93.41	
08/07/2024	28	76.50		c	60.99	79.80	(*)		72.09	66.00	84.31		(*)		74.57			(*)		54.25			80.00				86.58	90.58	
15/07/2024	29	(*)		c	60.99	79.60	c		66.51	65.00	82.32		(*)		69.69			(*)		50.75			80.00				86.46	91.68	

EU (weighted avg.)	EUR / head	Compare to previous week
78.27	📈	+ 0.2%
79.10	📈	+ 1.1%
81.02	📈	+ 2.4%
83.01	📈	+ 2.5%
84.23	📈	+ 1.5%
86.05	📈	+ 2.2%
87.51	📈	+ 1.7%
88.27	📈	+ 0.9%
88.59	📈	+ 0.4%
89.01	📈	+ 0.5%
89.16	📈	+ 0.2%
89.15	📈	- 0.0%
88.50	📈	- 0.7%
87.54	📈	- 1.1%
85.70	📈	- 2.1%
84.23	📈	- 1.7%
82.65	📈	- 1.9%
81.96	📈	- 0.8%
81.64	📈	- 0.4%
80.84	📈	- 1.0%
80.28	📈	- 0.7%
79.90	📈	- 0.5%
77.74	📈	- 2.7%
74.16	📉	- 4.6%
72.08	📉	- 2.8%

UK
EUR

	BE	BG	CZ	DK	DE	EE	GR	ES	FR	HR	IE	IT	CY	LV	LT	LU	HU	MT	NL	AT	PL	PT	RO	SI	SK	FI	SE
Change 1 week				- 0.0%	- 0.3%			- 7.7%	- 1.5%	- 2.4%				- 6.5%					- 6.5%			+ 0.0%				- 0.1%	+ 1.2%
Change 4 weeks				- 0.0%	- 12.4%			- 15.9%	- 2.6%	- 2.6%				- 2.1%					- 21.6%			- 8.0%				+ 0.3%	- 0.6%
Change 1 year				- 13.1%	- 19.5%			- 26.4%	- 6.5%	- 30.2%				- 13.2%					- 31.0%			- 7.0%				- 0.3%	+ 5.6%

EU (weighted avg.)
📈 - 2.8%
📉 - 10.2%
📉 - 17.0%

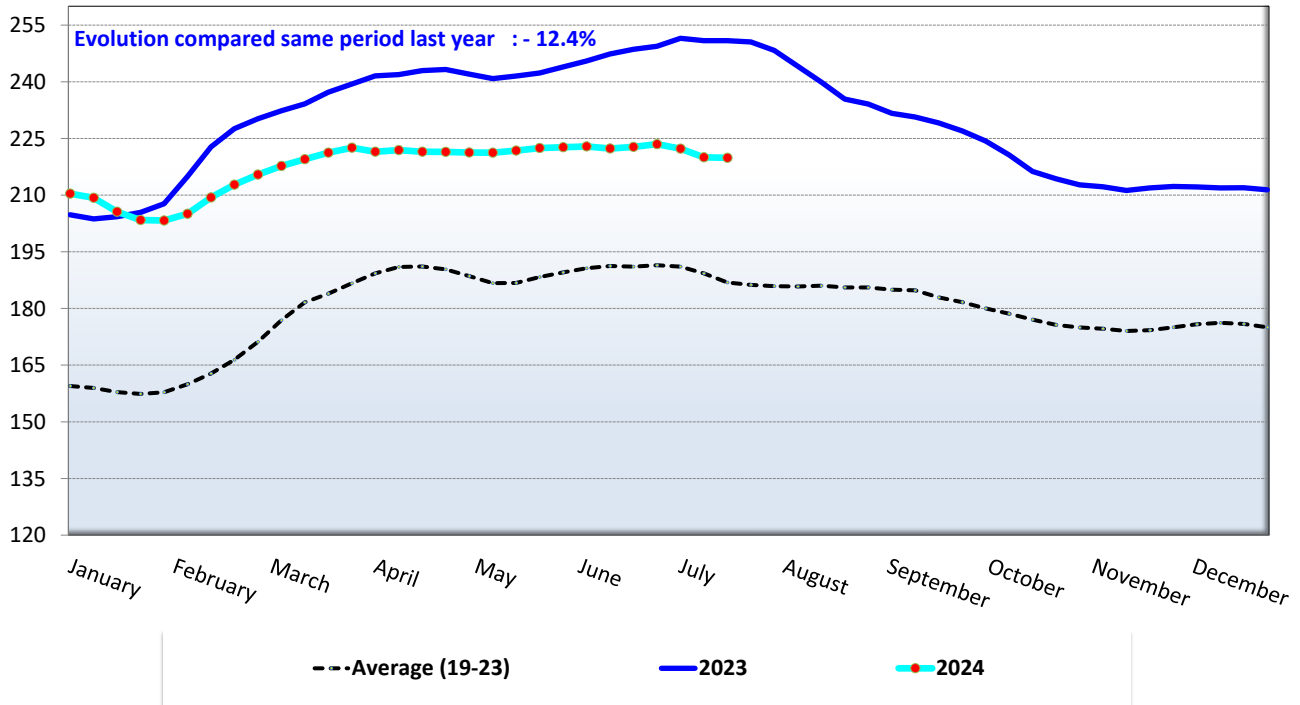
(\*) Data unavailable

c Confidential

## Evolution of the EU pig carcass prices (average class E & S)

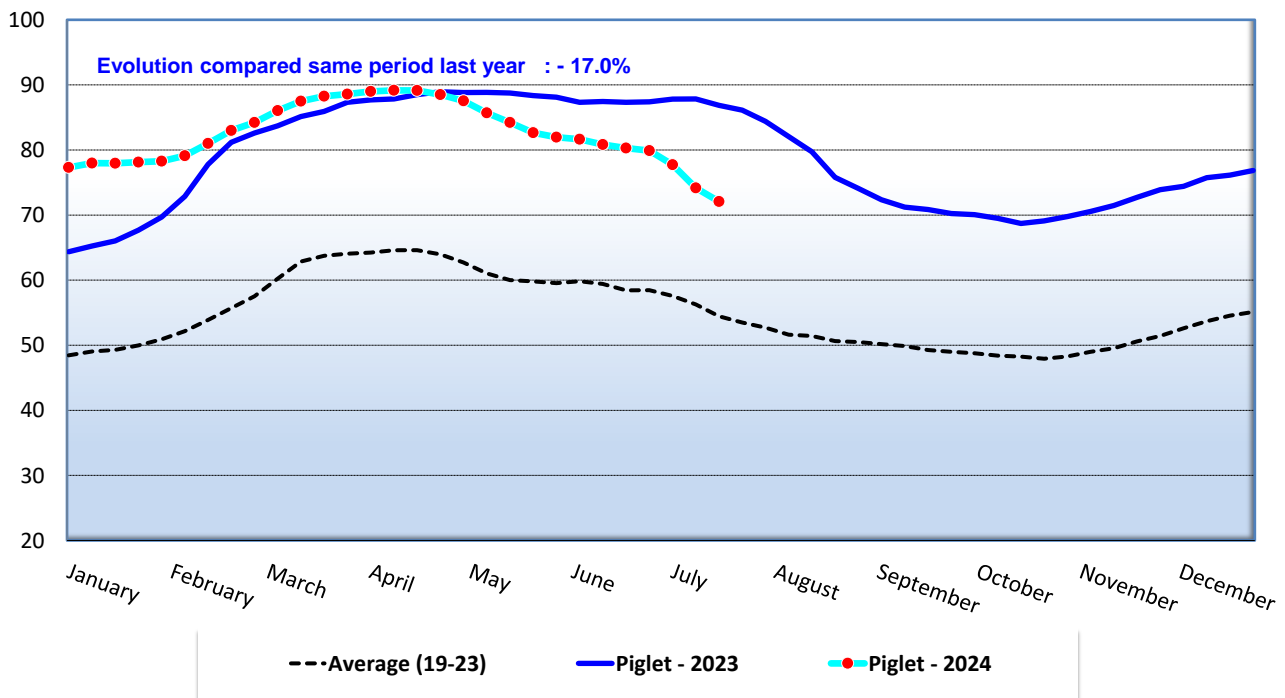
**Week 29 latest price ==> 219.88 EUR/100 kg/cw**

Source: EU Commission DG AGRI



## Evolution of the EU average piglet prices (€/head)

**Week 29 latest price ==> 72.08 EUR/head**



<b>15/07/2024</b>	<b>Class S &amp; E €/100kg carcass weight</b>	<b>Piglet €/head</b>
<b>Week 29</b>	<b>220</b>	<b>72</b>
1 week	-0.1%	-2.8%
4 weeks	-1.3%	-10.2%
Year -1	-12.4%	-17.0%
5 year avg	17.6%	32.4%

# Meat Market Observatory - Pig



EUROPEAN COMMISSION

Directorate-General for Agriculture and Rural Development

E3. Animal Products

## Monthly Market Prices for Pig Carcase Grade S in the E.U.

		Jun-2023	Jul-2023	Aug-2023	Sep-2023	Oct-2023	Nov-2023	Dec-2023	Jan-2024	Feb-2024	Mar-2024	Apr-2024	May-2024	Jun-2024	Change - 1 year	
BE	Belgium	EUR / 100 Kg	245.41	251.19	240.75	227.15	216.92	212.18	213.53	208.32	208.47	219.52	220.27	221.62	223.24	- 9.0%
CZ	Czechia	EUR / 100 Kg	244.28	253.70	242.37	232.21	221.85	217.69	217.89	215.07	209.66	219.02	219.04	223.13	224.15	- 8.2%
	Czechia	CZK/ 100kg	5 789.60	6 061.00	5 842.35	5 657.50	5 451.55	5 330.27	5 333.42	5 315.45	5 285.17	5 540.26	5 536.60	5 545.77	5 553.30	- 4.1%
DK	Denmark	EUR / 100 Kg	210.21	210.56	208.95	198.72	192.30	195.17	197.14	193.65	186.08	191.06	191.65	188.72	188.19	- 10.5%
	Denmark	DKK / 100 Kg	1 565.93	1 568.77	1 557.10	1 481.77	1 434.55	1 455.70	1 469.77	1 444.00	1 387.21	1 424.65	1 429.60	1 407.90	1 403.77	- 10.4%
DE	Germany	EUR / 100 Kg	256.65	264.01	249.92	242.56	228.04	223.63	223.95	219.11	224.69	234.21	234.18	234.56	234.54	- 8.6%
EE	Estonia	EUR / 100 Kg	221.29	231.43	224.20	217.91	206.59	203.97	203.80							
IE	Ireland	EUR / 100 Kg	222.39	223.12	224.60	223.26	213.77	203.46	198.54	195.46	194.88	199.97	209.03	217.08	220.20	- 1.0%
EL	Greece	EUR / 100 Kg	270.47	271.75	262.76	252.04	246.46	242.29	243.06	235.05	235.43	243.04	239.72	240.24	239.79	- 11.3%
ES	Spain	EUR / 100 Kg	256.18	255.32	250.64	238.37	223.15	209.87	208.31	207.08	211.53	225.03	229.07	229.01	230.80	- 9.9%
FR	France	EUR / 100 Kg	239.40	250.42	240.74	223.03	211.81	197.93	196.90	198.29	204.83	221.35	225.23	224.23	223.93	- 6.5%
HR	Croatia	EUR / 100kg	241.73	249.42	219.16	197.61	216.92	192.77	217.03	217.53	215.26	222.33	225.49	216.73	216.75	- 10.3%
	Croatia	HRK / 100kg	1 821.82	1 879.75	1 651.71	1 489.25	1 634.83	1 452.82	1 635.68	1 639.40	1 622.28	1 675.57	1 699.40	1 633.38	1 633.53	- 10.3%
LV	Latvia	EUR / 100 Kg	260.79	269.84	247.85	235.70	227.46	221.08	230.11	224.60	217.37	230.52	233.24	232.25	234.65	- 10.0%
LT	Lithuania	EUR / 100 Kg	242.80	253.78	237.22	224.04	218.68	212.59	219.84	220.25	213.42	223.67	220.32	219.47	220.67	- 9.1%
HU	Hungary	EUR / 100 Kg	260.65	260.28	251.19	242.49	228.88	225.91	232.62	220.38	216.37	228.55	224.80	228.47	229.59	- 11.9%
	Hungary	HUF / 100 Kg	96 624.85	98 603.94	96 746.62	93 538.80	88 271.81	85 671.88	88 788.57	84 086.35	83 959.95	90 195.70	88 239.76	88 563.07	90 458.56	- 6.4%
MT	Malta	EUR / 100 Kg	227.26	227.53	227.72	227.58	227.10	226.58	226.35	226.14	225.85	226.33	226.27	226.94	227.06	- 0.1%
NL	Netherlands	EUR / 100 Kg	220.89	229.35	217.38	208.41	199.81	196.37	196.41	177.01	177.45	185.33	183.60	185.02	188.76	- 14.5%
AT	Austria	EUR / 100 Kg	266.90	274.84	262.96	256.03	244.96	236.29	237.92	232.64	235.80	246.86	247.71	248.12	247.79	- 7.2%
PL	Poland	EUR / 100 Kg	268.67	266.88	241.06	231.23	226.79	227.40	221.83	209.15	215.11	222.62	228.81	231.54	231.19	- 14.0%
	Poland	PLN / 100 Kg	1 199.47	1 186.78	1 074.05	1 061.19	1 025.96	1 001.74	961.55	912.23	931.04	958.95	984.23	991.94	997.78	- 16.8%
PT	Portugal	EUR / 100 Kg	266.74	267.00	262.58	248.73	232.63	218.94	217.08	216.90	220.35	234.96	239.99	239.99	241.53	- 9.5%
RO	Romania	EUR / 100 Kg	280.64	271.22	265.06	257.55	242.31	236.84	259.84	243.52	213.35	229.95	222.89	219.44	226.45	- 19.3%
	Romania	RON / 100 Kg	1 391.89	1 340.84	1 309.83	1 278.31	1 203.93	1 177.05	1 291.63	1 211.47	1 061.42	1 143.06	1 108.43	1 091.81	1 126.98	- 19.0%
SI	Slovenia	EUR / 100 Kg	272.11	280.85	270.09	262.70	250.71	243.33	242.65	237.12	238.42	250.04	250.59	249.44	255.43	- 6.1%
SK	Slovakia	EUR / 100 Kg	254.07	261.15	248.41	236.88	228.93	223.59	223.08	218.05	211.87	224.46	222.57	223.08	223.98	- 11.8%
FI	Finland	EUR / 100 Kg	229.78	228.99	227.67	227.80	227.14	226.77	227.35	224.58	221.54	221.34	221.99	221.56	220.06	- 4.2%
SE	Sweden	EUR / 100 Kg	224.05	224.32	222.42	219.88	224.22	226.40	234.27	232.54	233.56	233.60	228.65	228.69	238.49	+ 6.4%
	Sweden	EUR / 100 Kg	2 612.17	2 613.13	2 625.71	2 605.33	2 609.32	2 618.40	2 624.23	2 621.45	2 628.41	2 640.03	2 649.53	2 660.81	2 695.77	+ 3.2%
<b>EU</b>		<b>EUR / 100 Kg</b>	<b>247.88</b>	<b>251.25</b>	<b>241.93</b>	<b>230.96</b>	<b>219.14</b>	<b>211.86</b>	<b>211.88</b>	<b>207.41</b>	<b>209.85</b>	<b>220.84</b>	<b>222.70</b>	<b>222.76</b>	<b>223.73</b>	<b>- 9.7%</b>



# Meat Market Observatory - Pig



EUROPEAN COMMISSION

Directorate-General for Agriculture and Rural Development

E3. Animal Products

## Monthly Market Prices for Pig Carcase Grade E in the E.U.

		Jun-2023	Jul-2023	Aug-2023	Sep-2023	Oct-2023	Nov-2023	Dec-2023	Jan-2024	Feb-2024	Mar-2024	Apr-2024	May-2024	Jun-2024	Change - 1 year	
<b>BE</b>	Belgium	EUR / 100 Kg	235.89	241.62	231.26	217.34	208.29	204.07	205.50	201.05	201.87	212.90	214.05	215.51	217.62	- 7.7%
<b>BG</b>	Bulgaria	EUR / 100 Kg	276.38	273.75	272.43	269.06	267.90	260.87	259.28	256.81	253.86	255.53	254.88	254.95	254.06	- 8.1%
	Bulgaria	BGN/ 100 Kg	540.55	535.39	532.81	526.23	523.96	510.22	507.11	502.27	496.51	499.77	498.49	498.63	496.89	- 8.1%
<b>CZ</b>	Czechia	EUR / 100 Kg	238.27	247.77	237.13	227.20	217.24	213.17	213.59	210.77	205.55	214.41	215.15	218.65	219.51	- 7.9%
	Czechia	CZK/ 100kg	5 647.07	5 919.32	5 716.00	5 535.33	5 338.19	5 219.60	5 228.13	5 209.13	5 181.66	5 423.68	5 438.13	5 434.32	5 438.40	- 3.7%
<b>DK</b>	Denmark	EUR / 100 Kg	207.35	207.23	205.78	196.05	189.40	192.30	194.53	190.77	182.77	187.47	188.38	185.48	185.30	- 10.6%
	Denmark	DKK / 100 Kg	1 544.63	1 543.94	1 533.52	1 461.80	1 412.97	1 434.23	1 450.32	1 422.58	1 362.48	1 397.84	1 405.23	1 383.71	1 382.20	- 10.5%
<b>DE</b>	Germany	EUR / 100 Kg	252.93	260.23	246.96	238.91	224.59	220.22	220.59	215.76	221.56	230.82	230.75	231.14	230.91	- 8.7%
<b>EE</b>	Estonia	EUR / 100 Kg	216.04	227.44	219.27	214.24	202.16	201.60	200.36						213.77	- 1.1%
<b>IE</b>	Ireland	EUR / 100 Kg	222.41	223.26	224.71	223.34	213.71	203.34	198.34	195.02	194.39	199.60	208.60	216.64	219.82	- 1.2%
<b>EL</b>	Greece	EUR / 100 Kg	270.47	271.75	262.76	252.04	246.46	242.29	243.06	235.05	235.43	243.04	240.33	240.24	239.79	- 11.3%
<b>ES</b>	Spain	EUR / 100 Kg	247.40	248.70	243.15	231.53	216.15	201.99	199.95	199.30	201.68	217.50	219.45	219.05	220.77	- 10.8%
<b>FR</b>	France	EUR / 100 Kg	232.03	242.97	233.74	215.80	204.81	190.93	189.90	191.19	196.59	213.13	218.23	216.84	216.17	- 6.8%
<b>HR</b>	Croatia	EUR / 100kg	246.70	255.74	228.65	197.38	213.89	197.12	192.14	206.06	202.71	211.00	216.62	209.24	210.79	- 14.6%
	Croatia	HRK / 100kg	1 859.25	1 927.40	1 723.18	1 487.54	1 611.99	1 485.61	1 448.09	1 552.99	1 527.69	1 590.18	1 632.55	1 576.97	1 588.64	- 14.6%
<b>CY</b>	Cyprus	EUR / 100 Kg	249.16	256.98	255.71	254.64	254.54	253.13	254.17	254.41	255.16	255.73	256.71	267.92	270.66	+ 8.6%
<b>LV</b>	Latvia	EUR / 100 Kg	268.80	276.18	250.28	242.54	233.59	228.87	240.43	234.09	226.87	237.98	238.46	237.19	239.44	- 10.9%
<b>LT</b>	Lithuania	EUR / 100 Kg	254.84	264.53	244.15	232.76	223.59	219.42	225.50	223.48	216.26	226.30	226.46	228.08	230.41	- 9.6%
<b>HU</b>	Hungary	EUR / 100 Kg	257.43	255.85	247.17	237.90	225.20	221.65	231.18	216.71	210.49	223.56	218.97	223.95	224.96	- 12.6%
	Hungary	HUF / 100 Kg	95 432.05	96 923.69	95 194.79	91 767.36	86 855.11	84 057.23	88 240.72	82 682.21	81 677.20	88 223.36	85 950.93	86 812.66	88 634.05	- 7.1%
<b>MT</b>	Malta	EUR / 100 Kg	226.11	227.11	226.53	226.02	226.53	225.75	225.83	225.68	225.12	225.37	225.53	225.56	225.59	- 0.2%
<b>NL</b>	Netherlands	EUR / 100 Kg	219.75	228.21	216.24	207.27	198.67	195.23	195.27	175.87	176.31	184.19	182.46	183.88	187.62	- 14.6%
<b>AT</b>	Austria	EUR / 100 Kg	256.21	263.74	252.17	244.57	233.73	225.49	226.58	221.68	225.80	236.59	237.85	237.91	237.77	- 7.2%
<b>PL</b>	Poland	EUR / 100 Kg	266.69	265.24	239.45	229.48	224.82	225.32	219.51	207.15	213.24	220.39	226.93	229.69	229.33	- 14.0%
	Poland	PLN / 100 Kg	1 190.65	1 179.47	1 066.88	1 053.16	1 017.05	992.57	951.48	903.54	922.93	949.37	976.16	984.02	989.74	- 16.9%
<b>PT</b>	Portugal	EUR / 100 Kg	267.36	267.45	263.09	249.34	233.34	219.79	218.17	217.96	221.26	236.03	240.90	241.22	242.70	- 9.2%
<b>RO</b>	Romania	EUR / 100 Kg	279.88	269.44	264.61	256.67	242.64	235.23	255.26	239.42	213.21	227.47	221.39	218.20	223.66	- 20.1%
	Romania	RON / 100 Kg	1 388.14	1 332.08	1 307.61	1 273.94	1 205.59	1 169.06	1 268.87	1 191.04	1 060.74	1 130.74	1 100.97	1 085.65	1 113.10	- 19.8%
<b>SI</b>	Slovenia	EUR / 100 Kg	251.69	262.29	251.54	245.59	233.22	225.14	225.00	220.21	221.15	231.55	232.00	230.55	234.02	- 7.0%
<b>SK</b>	Slovakia	EUR / 100 Kg	255.82	258.49	248.79	243.37	233.07	225.35	230.29	225.06	223.70	232.76	233.30	235.76	234.92	- 8.2%
<b>FI</b>	Finland	EUR / 100 Kg	221.67	221.02	220.80	220.92	219.57	219.34	219.63	217.81	213.87	213.39	214.93	214.09	212.13	- 4.3%
<b>SE</b>	Sweden	EUR / 100 Kg	220.79	220.53	218.46	216.51	220.53	222.51	230.58	228.89	230.15	229.59	224.99	225.49	235.07	+ 6.5%
	Sweden	SEK / 100 Kg	2 574.07	2 569.06	2 578.97	2 565.47	2 566.39	2 573.43	2 582.90	2 580.29	2 589.97	2 594.77	2 607.13	2 623.61	2 657.13	+ 3.2%
<b>EU</b>		EUR / 100 Kg	245.48	249.66	238.03	228.32	217.90	212.21	211.94	205.42	207.58	217.40	219.03	219.88	220.90	- 10.0%

# Meat Market Observatory - Pig



EUROPEAN COMMISSION

Directorate-General for Agriculture and Rural Development

E3. Animal Products

## Monthly Market Prices for Pig Carcase Grade R in the E.U.

		Jun-2023	Jul-2023	Aug-2023	Sep-2023	Oct-2023	Nov-2023	Dec-2023	Jan-2024	Feb-2024	Mar-2024	Apr-2024	May-2024	Jun-2024	Change - 1 year	
CZ	Czechia	EUR / 100 Kg	202.54	213.72	198.61	195.57	184.83	179.47	177.71	181.46	172.82	183.37	190.13	187.24	186.64	- 7.9%
CZ	Czechia	CZK / 100 Kg	4 800.37	5 105.74	4 787.58	4 763.70	4 542.16	4 394.57	4 349.97	4 484.90	4 357.00	4 638.48	4 806.37	4 654.03	4 623.63	- 3.7%
DE	Germany	EUR / 100 Kg	224.62	232.00	219.75	210.96	197.63	194.46	194.88	188.94	192.78	202.99	203.05	203.11	204.42	- 9.0%
EL	Greece	EUR / 100 Kg	270.47	271.75	262.76	252.04	246.46	242.29	243.06	235.05	235.43	243.04	240.33	240.24	239.79	- 11.3%
ES	Spain	EUR / 100 Kg	251.22	250.59	245.78	234.78	218.33	207.48	206.76	207.74	209.89	224.40	226.65	226.29	228.14	- 9.2%
IT	Italy	EUR / 100 Kg	255.63	268.04	282.24	276.17	289.12	283.87	274.97	265.94	256.70	254.22	258.85	251.19	249.87	- 2.3%
LV	Latvia	EUR / 100 Kg	226.71													
LT	Lithuania	EUR / 100 Kg	229.58	243.86	231.21	222.73	211.81	210.40	217.35	212.94	204.12	219.38	218.70	219.04	219.80	- 4.3%
LU	Luxembourg	EUR / 100 Kg	228.37	237.19	226.21			197.80								
SK	Slovakia	EUR / 100 Kg	231.43	250.95							207.33	216.65				
<b>EU</b>		<b>EUR / 100 Kg</b>	<b>253.37</b>	<b>264.74</b>	<b>275.85</b>	<b>269.23</b>	<b>278.29</b>	<b>272.71</b>	<b>265.04</b>	<b>256.98</b>	<b>249.35</b>	<b>248.99</b>	<b>253.15</b>	<b>246.55</b>	<b>245.63</b>	<b>- 3.1%</b>

# Meat Market Observatory - Pig



EUROPEAN COMMISSION

Directorate-General for Agriculture and Rural Development

E3. Animal Products

## Monthly Market Prices for Piglets in the E.U.

			Jun-2023	Jul-2023	Aug-2023	Sep-2023	Oct-2023	Nov-2023	Dec-2023	Jan-2024	Feb-2024	Mar-2024	Apr-2024	May-2024	Jun-2024	Change - 1 year
<b>BE</b>	Belgium	EUR / piece	93.80	94.35	82.69	72.40	70.23	72.87	82.42	85.15	90.78	99.44	99.17	89.60	83.88	- 10.6%
<b>DK</b>	Denmark	EUR / piece	69.42	70.19	69.61	66.29	64.32	66.60	67.19	63.05	61.16	63.50	63.62	62.03	61.64	- 11.2%
	Denmark	DKK / piece	517.17	522.97	518.71	494.30	479.81	496.70	500.90	470.19	455.93	473.48	474.60	462.77	459.80	- 11.1%
<b>DE</b>	Germany	EUR / piece	95.50	98.55	91.77	84.98	78.38	75.93		78.75	83.58	90.31	90.37	90.88	90.79	- 4.9%
<b>ES</b>	Spain	EUR / piece	92.35	90.04	75.34	60.68	62.58	70.51	79.29	85.75	89.34	97.67	99.02	87.20	79.61	- 13.8%
<b>FR</b>	France	EUR / piece	68.14	69.31	68.43	64.01	60.69	59.20	59.36	59.72	60.29	63.90	67.27	67.49	66.75	- 2.0%
<b>HR</b>	Croatia	EUR / piece	116.03	117.95	114.10	98.96	97.29	101.11	57.16	53.74	80.81	69.82	82.99	81.75	88.84	- 23.4%
	Croatia	HRK / piece	874.44	888.92	859.94	745.80	733.26	761.99	430.76	405.00	609.01	526.17	625.42	616.09	669.51	- 23.4%
<b>IT</b>	Italy	EUR / piece	113.33	110.84	110.52	108.47	103.81	101.70	103.82	109.87	117.67	125.22	130.22	129.73	129.58	+ 14.3%
<b>HU</b>	Hungary	EUR / piece	94.72	71.41	66.58	66.53	70.83	72.39	74.68	78.14	73.94	76.34	82.93	83.06	77.54	- 18.1%
	Hungary	HUF / piece	35 106.88	27 050.69	25 646.77	25 664.36	27 309.04	27 453.51	28 506.36	29 815.67	28 688.86	30 129.03	32 560.97	32 192.72	30 540.22	- 13.0%
<b>NL</b>	Netherlands	EUR / piece	74.27	73.52	62.94	54.65	53.35	56.15	62.35	63.75	67.39	74.85	75.70	69.42	65.48	- 11.8%
<b>PT</b>	Portugal	EUR / piece	88.00	86.13	86.00	78.63	65.35	67.59	70.80	72.01	76.86	82.03	86.40	88.26	87.00	- 1.1%
<b>FI</b>	Finland	EUR / piece	86.78	86.87	88.52	89.00	88.39	88.95	88.33	87.76	85.66	85.35	86.27	86.21	86.24	- 0.6%
<b>SE</b>	Sweden	EUR / piece	85.50	85.51	83.86	82.86	85.75	86.30	90.52	88.75	88.85	89.66	89.03	90.13	92.81	+ 8.5%
	Sweden	SEK / piece	996.85	996.13	989.91	981.76	997.89	998.07	1 013.78	1 000.41	999.82	1 013.29	1 031.69	1 048.70	1 049.09	+ 5.2%
<b>EU</b>		EUR / piece	<b>87.48</b>	<b>87.09</b>	<b>79.55</b>	<b>71.49</b>	<b>69.40</b>	<b>71.59</b>	<b>75.61</b>	<b>77.89</b>	<b>81.10</b>	<b>87.28</b>	<b>88.86</b>	<b>84.42</b>	<b>81.39</b>	<b>- 7.0%</b>