



Weekly price report on Pig carcass (Class S, E and R) and Piglet prices in the EU



Disclaimer

Please note that EU prices for pig meat, are averages of the national prices communicated by Member States weighted with coefficients. The coefficients attributed to Member States' prices were modified on 1st July 2023; from this date, the coefficient used for each Member State corresponds to this Member State's share in volume in total EU production over the last three years. This affects EU prices for pig meat.

Week 2024 → 16	Unit	Variation 1 week	Variation 4 weeks	Variation 1 year	Comparison with average 2019/2023
Carcass Class S	EUR / 100 kg carcass weight	→ - 0.1%	→ - 0.0%	↓ - 9.0%	
Carcass Class E		→ - 0.4%	→ + 0.4%	↓ - 8.6%	
Carcass Class R		→ - 0.1%	↗ + 1.2%	↑ + 6.2%	
Weighted Average (Class S & E)		→ - 0.2%	→ + 0.1%	↓ - 8.8%	+ 15.9%
Piglet	EUR / head	→ - 0.0%	→ + 0.8%	→ + 0.6%	+ 37.8%

Meat Market Observatory - Pig



EUROPEAN COMMISSION
 Directorate-General for Agriculture and Rural Development
 E13. Animal Products

Last update : 24/04/2024



EU PRICES OF CLASS S in EURO/100 kg carcass



Source: Commission Implementing Regulation (EU) 2017/1185

S	Week beginning	Week N°	BE	BG	CZ	DK	DE	EE	GR	ES	FR	HR	IE	IT	CY	LV	LT	LU	HU	MT	NL	AT	PL	PT	RO	SI	SK	FI	SE
			EUR	EUR	EUR	EUR	EUR	EUR	EUR	EUR	EUR	EUR	EUR	EUR	EUR	EUR	EUR	EUR	EUR	EUR	EUR	EUR	EUR	EUR	EUR	EUR	EUR	EUR	EUR
30/10/2023	44	211.88		217.27	194.28	223.71	205.35	238.55	213.73	202.00	183.80	206.38				220.79	213.61	221.74	222.44	226.91	196.25	237.51	221.79	222.77	235.61	243.49	222.73	225.56	221.29
06/11/2023	45	210.55		217.40	194.54	223.71	201.39	242.19	211.33	199.00	181.98	206.48				220.22	211.98	221.17	229.54	226.73	196.49	236.53	224.00	219.84	235.63	243.34	221.92	226.40	223.69
13/11/2023	46	211.86		217.39	194.13	223.64	204.38	242.97	207.67	197.00	190.15	202.43				220.62	212.44	(*)	223.81	226.86	196.42	234.75	229.13	217.53	235.27	243.33	224.31	227.17	226.73
20/11/2023	47	213.62		217.85	196.35	223.37	204.94	243.62	208.65	196.00	194.54	202.21				219.98	211.99	221.65	225.20	226.27	196.35	236.73	230.66	217.53	236.53	242.90	224.30	227.42	228.93
27/11/2023	48	213.45		218.94	197.17	223.84	204.33	243.62	208.45	196.00	224.36	198.54				225.70	213.70	221.49	228.78	225.95	196.28	236.25	231.67	217.53	243.74	243.90	225.10	227.07	232.54
04/12/2023	49	213.61		219.33	197.03	223.80	204.44	243.10	207.63	196.00	215.19	198.49				229.33	219.27	221.59	232.37	226.16	196.16	238.24	230.34	217.11	250.27	243.02	222.63	228.90	231.15
11/12/2023	50	213.55		218.25	197.69	223.98	203.20	243.88	208.68	197.00	215.19	198.41				231.60	218.59	c	236.10	226.08	196.38	237.11	219.42	217.22	259.67	241.94	223.42	229.50	232.86
18/12/2023	51	213.60		217.29	197.03	224.20	203.29	241.80	208.67	197.00	237.55	198.65				229.48	221.32	c	234.16	226.75	196.77	238.68	217.55	216.90	268.65	241.97	223.24	224.05	234.98
25/12/2023	52	213.40		216.24	196.79	223.85	204.03	243.23	208.21	198.00	197.07	198.62				231.93	222.79	c	229.49	226.58	196.37	238.38	215.80	216.90	267.67	243.15	222.18	227.06	238.84
01/01/2024	1	212.94		216.21	198.49	223.80	c	240.89	208.22	198.00	210.90	(*)				230.21	228.84	220.63	229.13	226.27	184.33	235.80	214.63	216.90	260.96	241.03	217.15	226.73	235.43
08/01/2024	2	209.95		216.79	196.30	223.87	c	236.60	208.08	198.00	234.07	195.12				228.67	223.88	c	226.16	226.44	178.77	235.88	213.69	216.90	254.84	239.19	218.38	225.63	234.05
15/01/2024	3	209.44		215.58	193.76	217.39	c	234.39	203.63	198.00	220.88	195.09				225.62	222.03	217.81	221.01	226.05	175.50	232.61	208.39	216.90	244.08	237.94	221.68	223.85	231.14
22/01/2024	4	204.00		215.33	189.23	213.70	c	229.32	207.87	198.00	209.02	194.84				218.81	210.52	c	209.78	225.89	171.72	228.17	201.86	216.90	225.78	232.70	215.50	222.73	230.36
29/01/2024	5	201.21		206.60	186.20	213.71	c	232.70	208.29	201.00	206.43	191.21				213.13	210.24	c	209.77	(*)	171.73	228.20	204.52	216.90	216.52	231.57	216.88	223.09	230.67
05/02/2024	6	201.50		205.58	184.82	220.07	c	234.13	208.36	201.00	214.42	191.11				210.06	207.62	c	206.82	(*)	171.82	230.95	209.57	216.90	212.88	231.29	207.44	221.44	234.25
12/02/2024	7	210.74		210.52	184.99	226.84	c	235.82	210.27	203.00	218.78	194.92				217.35	211.74	c	216.07	224.83	178.00	237.22	217.20	219.22	210.64	239.71	209.32	221.28	232.01
19/02/2024	8	213.88		211.33	187.00	228.88	c	236.99	214.30	208.00	216.27	198.61				223.21	219.36	c	224.82	226.37	182.77	240.08	220.64	223.07	211.22	244.00	210.77	221.29	235.14
26/02/2024	9	214.52		215.44	188.48	232.67	c	(*)	217.71	213.00	217.61	198.55				224.22	219.30	c	225.47	226.59	182.76	241.91	222.09	227.07	219.43	245.72	221.00	221.09	235.21
04/03/2024	10	219.92		218.75	190.36	234.24	c	242.32	218.60	217.00	222.44	199.02				230.90	222.21	c	229.03	226.41	185.61	246.94	222.50	230.75	227.65	249.01	223.45	220.77	235.78
11/03/2024	11	219.10		219.70	191.24	234.56	c	243.10	222.72	222.00	226.10	199.04				230.12	226.19	c	229.09	226.26	185.60	247.64	223.51	234.75	231.06	250.90	223.32	221.27	235.58
18/03/2024	12	220.43		219.72	191.48	234.31	c	244.53	229.38	224.00	225.39	199.20				230.88	224.76	c	228.98	226.57	185.60	247.74	222.13	237.75	232.85	251.35	226.05	222.17	233.01
25/03/2024	13	220.77		219.43	192.27	234.41	c	244.79	232.57	226.00	217.40	203.22				232.86	223.38	c	228.43	225.96	185.61	247.25	222.55	239.99	232.74	250.75	226.52	221.26	229.35
01/04/2024	14	220.38		218.99	191.99	234.05	c	239.59	229.01	226.00	230.11	203.28				232.61	220.75	c	227.21	226.21	183.60	247.54	226.17	239.99	230.36	254.47	221.04	222.10	229.22
08/04/2024	15	219.73		219.21	191.97	234.39	c	(*)	228.85	225.00	223.46	207.38				232.81	219.67	c	224.88	(*)	183.60	247.72	232.54	239.99	225.57	248.81	222.71	221.78	229.85
15/04/2024	16	220.22		219.83	191.79	234.11	c	(*)	228.99	225.00	227.24	209.61				231.46	218.95	c	222.23	(*)	183.60	247.60	230.10	239.99	218.32	251.21	223.47	222.13	228.30

EU (weighted avg.)	EUR	Compare to previous week
212.98	👉	- 0.8%
212.09	👉	- 0.4%
210.99	👉	- 0.5%
211.62	👉	+ 0.3%
212.03	👉	+ 0.2%
211.86	👉	- 0.1%
211.97	👉	+ 0.1%
212.02	👉	+ 0.0%
211.60	👉	- 0.2%
210.74	👉	- 0.4%
209.79	👉	- 0.5%
205.98	👉	- 1.8%
204.42	👉	- 0.8%
204.37	👉	- 0.0%
205.87	👉	+ 0.7%
209.91	👉	+ 2.0%
213.31	👉	+ 1.6%
216.17	👉	+ 1.3%
218.37	👉	+ 1.0%
220.44	👉	+ 0.9%
222.64	👉	+ 1.0%
223.91	👉	+ 0.6%
222.76	👉	- 0.5%
222.86	👉	+ 0.0%
222.62	👉	- 0.1%

UK	EUR

	BE	BG	CZ	DK	DE	EE	GR	ES	FR	HR	IE	IT	CY	LV	LT	LU	HU	MT	NL	AT	PL	PT	RO	SI	SK	FI	SE
Change 1 week	+ 0.2%		+ 0.3%	- 0.1%	- 0.1%			+ 0.1%	+ 0.0%	+ 1.7%	+ 1.1%			- 0.6%	- 0.3%	- 1.2%		+ 0.0%	- 0.0%	- 1.0%	+ 0.0%	- 3.2%	+ 1.0%	+ 0.3%	+ 0.2%	- 0.7%	
Change 4 weeks	- 0.1%		+ 0.0%	+ 0.2%	- 0.1%			- 0.2%	+ 0.4%	+ 0.8%	+ 5.2%			+ 0.3%	- 2.6%	- 2.9%		- 1.1%	- 0.1%	+ 3.6%	+ 0.9%	- 6.2%	- 0.1%	- 1.1%	- 0.0%	- 2.0%	
Change 1 year	- 5.8%		- 7.2%	- 6.0%	- 5.2%			- 11.5%	- 11.1%	- 1.2%	- 4.8%			- 10.0%	- 9.0%	- 8.8%		- 14.7%	- 4.4%	- 10.8%	- 10.0%	- 7.8%	- 4.8%	- 5.3%	- 3.7%	+ 0.3%	

EU (weighted avg.)	EUR
- 0.1%	👉
- 0.0%	👉
- 9.0%	👇

(*) Data unavailable

c Confidential

Meat Market Observatory - Pig



EUROPEAN COMMISSION
Directorate-General for Agriculture and Rural Development
E3. Animal Products

Last update : 24/04/2024



EU PRICES OF CLASS E in EURO/100 kg carcass



Source: Commission Implementing Regulation (EU) 2017/1185

E		BE	BG	CZ	DK	DE	EE	GR	ES	FR	HR	IE	IT	CY	LV	LT	LU	HU	MT	NL	AT	PL	PT	RO	SI	SK	FI	SE	
Week beginning	Week N°	EUR	EUR	EUR	EUR	EUR	EUR	EUR	EUR	EUR	EUR	EUR	EUR	EUR	EUR	EUR	EUR	EUR	EUR	EUR	EUR	EUR	EUR	EUR	EUR	EUR	EUR	EUR	EUR
30/10/2023	44	202.98	265.24	212.51	191.06	220.25	200.88	238.55	205.24	195.00	191.69	206.34		252.89	227.62	220.65	215.18	218.89	225.47	195.11	226.64	219.69	223.67	235.10	226.51	225.89	218.41	217.64	
06/11/2023	45	203.29	262.30	212.95	191.32	220.33	200.73	242.19	204.41	192.00	189.82	206.15		253.70	227.16	219.44	214.56	220.60	225.65	195.35	226.30	221.88	220.73	234.64	225.83	222.47	218.31	219.57	
13/11/2023	46	203.57	260.67	213.02	191.59	220.40	201.74	242.97	198.71	190.00	193.11	202.27		252.55	228.50	216.88	(*)	221.71	226.22	195.28	222.66	226.83	218.35	233.37	224.44	224.42	220.41	223.09	
20/11/2023	47	205.37	258.70	213.23	193.53	219.83	203.28	243.62	201.36	189.00	210.73	202.16		252.67	230.21	219.87	214.66	221.72	225.56	195.21	226.16	228.82	218.35	235.11	224.32	228.49	219.69	225.44	
27/11/2023	48	205.38	257.10	214.50	194.63	220.33	200.83	243.62	200.50	189.00	199.90	198.62		254.24	231.73	221.54	215.43	226.69	225.75	195.14	226.42	229.63	218.35	239.89	224.88	225.81	219.79	227.63	
04/12/2023	49	205.35	257.25	214.81	194.22	220.59	203.04	243.10	198.40	190.00	198.98	198.41		254.07	235.56	223.84	214.91	230.01	225.49	195.02	227.92	228.20	218.35	245.26	224.10	225.58	221.95	227.87	
11/12/2023	50	205.52	257.28	214.08	195.14	220.71	198.64	243.88	200.84	190.00	198.98	198.38		(*)	242.37	225.21	c	235.51	225.45	195.24	225.02	216.74	218.35	254.79	225.58	230.39	222.30	229.48	
18/12/2023	51	205.80	262.25	213.13	194.48	220.66	199.68	241.80	200.64	190.00	202.88	198.56		254.38	243.63	227.97	c	234.31	226.55	195.63	227.27	214.94	217.96	264.62	224.07	232.37	215.03	231.83	
25/12/2023	52	205.36	261.30	211.94	194.24	220.49	199.86	243.23	199.70	190.00	164.41	197.87		254.12	243.88	226.68	c	226.81	225.87	195.23	226.17	213.79	217.96	262.96	226.29	234.73	219.18	234.41	
01/01/2024	1	204.78	260.18	212.12	196.07	220.33	c	240.89	200.76	191.00	194.44	(*)		253.19	237.36	233.48	213.86	227.41	225.99	183.19	224.50	212.62	217.96	252.98	224.25	226.82	221.02	231.31	
08/01/2024	2	201.91	256.77	212.77	193.35	220.67	c	236.60	198.82	191.00	217.87	194.83		253.81	238.72	224.29	c	223.27	225.91	177.63	224.16	211.63	217.96	247.47	221.92	226.84	218.87	230.48	
15/01/2024	3	203.02	256.16	211.10	190.54	213.87	c	234.39	199.12	191.00	213.90	194.56		254.15	237.06	227.12	210.39	216.50	225.61	174.36	221.82	206.51	217.96	241.57	220.54	225.01	217.02	227.08	
22/01/2024	4	197.33	255.04	210.85	186.41	210.45	c	229.32	198.90	191.00	203.22	194.56		256.25	228.61	214.88	c	204.97	225.35	170.58	217.49	200.02	217.96	225.55	216.59	223.92	215.77	227.10	
29/01/2024	5	194.41	254.67	202.01	183.12	210.45	c	232.70	198.38	193.00	193.97	190.98		254.93	221.48	209.80	c	204.31	(*)	170.59	218.74	202.11	217.96	216.29	214.44	219.59	214.48	227.93	
05/02/2024	6	194.90	252.84	201.06	181.19	217.02	c	234.13	199.21	193.00	197.95	190.61		254.34	219.77	209.62	c	199.67	(*)	170.68	220.27	207.72	217.96	213.40	214.59	216.80	213.84	231.15	
12/02/2024	7	204.22	252.66	205.83	181.77	223.90	c	235.82	199.94	195.00	204.14	194.56		255.12	229.30	216.95	c	210.31	224.15	176.86	227.37	215.60	220.02	210.49	222.24	225.69	213.93	229.00	
19/02/2024	8	207.49	254.96	208.89	183.78	225.70	c	236.99	204.47	199.00	207.88	197.85		255.67	231.71	223.04	c	219.18	225.58	181.63	229.69	219.20	223.90	211.23	226.62	228.59	213.31	230.86	
26/02/2024	9	207.56	255.04	210.63	185.13	229.31	c	(*)	207.50	205.00	208.20	198.04		255.99	231.93	221.29	c	220.70	225.39	181.62	232.96	219.49	227.90	218.00	227.88	227.86	214.20	231.37	
04/03/2024	10	213.26	255.45	214.13	186.73	230.91	c	242.32	211.19	209.00	212.00	198.52		255.36	237.70	225.39	c	224.83	225.07	184.47	236.22	220.54	231.90	224.54	231.13	232.27	211.93	232.22	
11/03/2024	11	212.59	255.59	215.78	187.49	231.10	c	243.10	214.71	213.00	214.00	198.91		255.73	236.91	227.44	c	224.64	225.64	184.46	237.24	221.36	235.90	229.07	231.51	232.29	213.53	230.76	
18/03/2024	12	213.84	255.67	214.62	187.60	230.80	c	244.53	220.18	216.00	210.00	198.96		255.82	240.53	227.05	c	223.94	225.52	184.46	236.86	219.76	238.90	230.53	233.12	234.22	214.31	228.69	
25/03/2024	13	214.20	255.63	214.72	189.05	231.13	c	244.79	228.22	218.00	209.19	202.68		255.89	239.37	227.47	c	222.04	225.25	184.47	237.58	220.30	240.90	229.79	232.03	234.38	213.43	225.95	
01/04/2024	14	213.80	255.06	215.47	189.45	230.90	c	239.59	218.81	219.00	216.00	202.89		255.97	237.72	227.96	c	221.32	225.96	182.46	237.75	224.12	240.90	226.45	236.89	233.32	214.65	225.66	
08/04/2024	15	214.29	255.25	215.22	188.62	230.97	c	(*)	219.40	218.00	230.84	206.83		256.41	238.40	226.04	c	219.09	(*)	182.46	238.50	230.85	240.90	223.93	231.04	235.25	215.73	226.37	
15/04/2024	16	213.93	(*)	215.04	188.44	230.62	209.68	(*)	218.69	218.00	211.53	209.05		256.34	236.56	224.21	c	216.85	(*)	182.46	237.27	228.43	240.90	218.14	230.99	232.02	214.96	224.43	

EU (weighted avg.)		UK
EUR	Compare to previous week	EUR
212.07	📉 -0.6%	
212.06	📉 -0.0%	
211.78	📉 -0.1%	
212.54	📈 +0.4%	
212.85	📈 +0.1%	
212.80	📉 -0.0%	
211.84	📉 -0.5%	
211.79	📉 -0.0%	
210.95	📉 -0.4%	
209.59	📉 -0.6%	
208.16	📉 -0.7%	
204.71	📉 -1.7%	
201.17	📉 -1.7%	
200.85	📉 -0.2%	
203.29	📈 +1.2%	
208.21	📈 +2.4%	
211.52	📈 +1.6%	
213.78	📈 +1.1%	
216.20	📈 +1.1%	
217.41	📈 +0.6%	
218.05	📈 +0.3%	
219.47	📈 +0.7%	
218.67	📉 -0.4%	
219.77	📈 +0.5%	
218.92	📉 -0.4%	

	BE	BG	CZ	DK	DE	EE	GR	ES	FR	HR	IE	IT	CY	LV	LT	LU	HU	MT	NL	AT	PL	PT	RO	SI	SK	FI	SE
Change 1 week	-0.2%		-0.1%	-0.1%	-0.2%			-0.3%	+0.0%	-8.4%	+1.1%		-0.0%	-0.8%	-0.8%		-1.0%		+0.0%	-0.5%	-1.0%	+0.0%	-2.6%	-0.0%	-1.4%	+0.4%	-0.9%
Change 4 weeks	+0.0%		+0.2%	+0.5%	-0.1%			-0.7%	+0.9%	+0.7%	+5.1%		+0.2%	-1.7%	-1.3%		-3.2%		-1.1%	+0.2%	+3.9%	+0.8%	-5.4%	-0.9%	-0.9%	+0.3%	-1.9%
Change 1 year	-4.7%		-7.1%	-5.1%	-5.1%	-3.3%		-12.3%	-11.7%	-10.0%	-4.9%		+6.4%	-10.5%	-8.2%		-9.5%		-14.7%	-4.6%	-10.7%	-9.9%	-7.2%	-4.6%	-2.4%	-4.1%	-0.0%

EU (weighted avg.)	
📉 -0.4%	
📈 +0.4%	
📉 -8.6%	

(*) Data unavailable

c Confidential



EUROPEAN COMMISSION
 Directorate-General for Agriculture and Rural Development
 E3. Animal Products



EU PRICES OF CLASS R in EURO/100 kg carcass



Source: Commission Implementing Regulation (EU) 2017/1185

R	Week beginning	Week N°	BE	BG	CZ	DK	DE	EE	GR	ES	FR	HR	IE	IT	CY	LV	LT	LU	HU	MT	NL	AT	PL	PT	RO	SI	SK	FI	SE
			EUR	EUR	EUR	EUR	EUR	EUR	EUR	EUR	EUR	EUR	EUR	EUR	EUR	EUR	EUR	EUR	EUR	EUR	EUR	EUR	EUR	EUR	EUR	EUR	EUR	EUR	EUR
30/10/2023	44				174.44		197.71		238.55	210.11				289.95			208.72	200.83									222.90		
06/11/2023	45				188.62		196.46		242.19	209.26				287.00			211.79	195.47									230.74		
13/11/2023	46				179.11		192.32		242.97	205.54				277.00			206.10	(*)									227.79		
20/11/2023	47				174.62		193.10		243.62	206.16				282.43			212.98	199.35									228.01		
27/11/2023	48				178.83		193.04		243.62	206.80				285.33			213.08	199.42									c		
04/12/2023	49				174.25		195.47		243.10	206.73				274.30			210.92	198.97									227.58		
11/12/2023	50				181.24		194.13		243.88	208.69				275.68			216.87	c									c		
18/12/2023	51				180.44		194.85		241.80	206.23				272.58			221.58	c									c		
25/12/2023	52				174.43		195.87		243.23	205.39				272.90			221.87	c									c		
01/01/2024	1				175.43		191.81		240.89	208.72				271.00			218.69	195.29									217.38		
08/01/2024	2				178.84		195.28		236.60	208.47				269.85			218.15	c									215.65		
15/01/2024	3				189.11		188.11		234.39	206.92				264.40			221.29	192.97									c		
22/01/2024	4				188.89		183.86		229.32	207.34				262.40			204.83	c									203.75		
29/01/2024	5				166.39		181.19		232.70	206.57				256.85			186.82	c									212.58		
05/02/2024	6				166.16		187.26		234.13	208.06				257.24			203.73	c									205.57		
12/02/2024	7				172.28		195.70		235.82	208.18				251.50			207.94	c									189.90		
19/02/2024	8				184.71		197.81		236.99	211.69				261.25			204.45	c									214.51		
26/02/2024	9				171.02		200.10		(*)	216.28				256.73			214.87	c									223.08		
04/03/2024	10				179.80		203.79		242.32	221.12				252.31			219.85	c									223.24		
11/03/2024	11				172.40		202.75		243.10	222.60				249.76			221.28	c									215.22		
18/03/2024	12				204.93		202.00		244.53	226.52				254.95			220.01	c									222.56		
25/03/2024	13				181.65		204.67	c	244.79	230.83				258.78			218.31	c									202.83		
01/04/2024	14				180.47		205.56	c	239.59	226.28				(*)			217.86	c									199.58		
08/04/2024	15				223.70		201.45	(*)	(*)	227.93				(*)			221.40	c									222.86		
15/04/2024	16				170.80		203.27	c	(*)	225.20				(*)			217.87	c									222.56		

EU (weighted avg.)	Compare to previous week
EUR	EUR
278.24	+ 1.3%
275.67	- 0.9%
266.55	- 3.3%
271.30	+ 1.8%
273.85	+ 0.9%
264.47	- 3.4%
265.78	+ 0.5%
262.95	- 1.1%
263.19	+ 0.1%
261.59	- 0.6%
260.72	- 0.3%
255.57	- 2.0%
253.62	- 0.8%
248.62	- 2.0%
249.38	+ 0.3%
244.86	- 1.8%
253.71	+ 3.6%
250.30	- 1.3%
247.13	- 1.3%
244.98	- 0.9%
249.83	+ 2.0%
253.47	+ 1.5%
253.10	- 0.1%
253.22	+ 0.0%
252.94	- 0.1%

UK
EUR

	BE	BG	CZ	DK	DE	EE	GR	ES	FR	HR	IE	IT	CY	LV	LT	LU	HU	MT	NL	AT	PL	PT	RO	SI	SK	FI	SE
Change 1 week			- 23.6%		+ 0.9%			- 1.2%							- 1.6%										- 0.1%		
Change 4 weeks			- 16.7%		+ 0.6%			- 0.6%							- 1.0%										+ 0.0%		+ 1.2%
Change 1 year			- 10.8%		- 6.6%			- 10.2%							+ 0.6%										+ 13.0%		+ 6.2%

EU (weighted avg.)
- 0.1%
+ 1.2%
+ 6.2%

(*) Data unavailable
 c Confidential

Meat Market Observatory - Pig



EUROPEAN COMMISSION
Directorate-General for Agriculture and Rural Development
E3. Animal Products

Last update : 24/04/2024



EU PRICES OF PIGLET in EUR / head



Source: Commission Implementing Regulation (EU) 2017/1185

Piglet		BE	BG	CZ	DK	DE	EE	GR	ES	FR	HR	IE	IT	CY	LV	LT	LU	HU	MT	NL	AT	PL	PT	RO	SI	SK	FI	SE	EU (weighted avg.)	UK			
Week beginning	Week N°	EUR	EUR	EUR	EUR	EUR	EUR	EUR	EUR	EUR	EUR	EUR	EUR	EUR	EUR	EUR	EUR	EUR	EUR	EUR	EUR	EUR	EUR	EUR	EUR	EUR	EUR	EUR	EUR	EUR	EUR	EUR / head	EUR
30/10/2023	44	69.00		c	65.65	75.70	49.00		66.29	60.00	99.24		101.67		55.36			73.30		53.25			65.00				89.02	83.90	69.77	+ 0.9%			
06/11/2023	45	71.00		c	65.83	75.60	50.67		68.33	59.00	99.24		101.67		55.43			(*)		55.00			66.00				88.57	85.51	70.55	+ 1.1%			
13/11/2023	46	73.00		c	65.83	75.60	c		70.75	58.75	102.35		101.67		63.75			72.44		56.25			66.00				89.70	86.64	71.47	+ 1.3%			
20/11/2023	47	75.00		c	68.00	76.10	c		72.79	59.25	102.35		101.67		65.78			71.16		57.50			70.80				88.98	87.60	72.72	+ 1.7%			
27/11/2023	48	77.00		c	68.01	77.10	c		75.22	59.25	102.35		101.92		61.85			70.65		59.25			70.80				88.15	(*)	73.89	+ 1.6%			
04/12/2023	49	79.00		c	68.00	78.00	51.37		76.78	59.25	55.24		102.52		68.51			(*)		61.00			70.80				87.89	88.67	74.41	+ 0.7%			
11/12/2023	50	83.00		75.45	68.00	78.80	c		78.87	59.50	55.24		103.52		61.17			76.82		62.75			70.80				89.05	89.17	75.74	+ 1.8%			
18/12/2023	51	85.00		c	66.79	c	c		80.77	59.25	47.53		104.37		61.23			(*)		63.25			70.80				87.91	89.10	76.15	+ 0.5%			
25/12/2023	52	85.00		c	65.60	c	c		82.49	59.50	51.25		105.67		77.31			(*)		63.75			70.80				88.56	96.28	76.86	+ 0.9%			
01/01/2024	1	85.00		c	65.58	79.00	c		83.37	59.50	50.98		107.17		77.31			78.84		63.75			70.80				88.60	90.86	77.32	+ 0.6%			
08/01/2024	2	85.00		c	64.36	78.90	(*)		85.17	59.50	60.95		108.77		75.43			(*)		63.75			70.80				88.79	89.71	77.98	+ 0.9%			
15/01/2024	3	85.00		c	62.89	78.50	(*)		86.51	59.75	47.45		109.57		79.44			78.82		63.75			73.00				87.60	88.88	77.96	- 0.0%			
22/01/2024	4	85.00		c	60.48	78.60	c		87.30	60.00	51.19		112.17		79.87			78.67		63.75			73.00				86.83	87.45	78.14	+ 0.2%			
29/01/2024	5	86.50		c	60.50	78.70	(*)		87.30	60.00	63.97		114.07		72.97			71.11		63.75			73.00				85.95	84.28	78.27	+ 0.2%			
05/02/2024	6	88.50		c	60.49	79.90	c		87.30	59.75	82.80		115.87		78.81			(*)		64.50			77.00				84.62	89.16	79.10	+ 1.1%			
12/02/2024	7	91.50		c	60.50	83.90	(*)		88.50	60.25	92.00		117.67		78.35			77.45		67.25			77.00				87.17	88.96	81.02	+ 2.4%			
19/02/2024	8	91.50		80.11	62.25	86.90	c		91.05	60.50	92.00		119.47		78.27			74.96		70.00			77.00				85.72	90.18	83.01	+ 2.5%			
26/02/2024	9	96.50		c	62.25	88.50	c		93.42	61.25	54.99		121.27		84.47			74.08		71.75			80.00				84.47	90.35	84.23	+ 1.5%			
04/03/2024	10	98.50		c	63.59	90.50	c		96.16	61.25	61.09		123.07		85.53			(*)		74.00			80.00				87.22	90.46	86.05	+ 2.2%			
11/03/2024	11	99.50		c	63.57	90.50	c		97.37	65.00	80.76		124.87		90.39			75.93		74.75			83.00				84.97	90.30	87.51	+ 1.7%			
18/03/2024	12	100.50		c	63.69	90.40	c		98.90	65.00	80.76		126.37		91.71			78.51		76.00			83.00				85.54	88.92	88.27	+ 0.9%			
25/03/2024	13	100.50		c	63.69	90.60	c		100.06	65.50	63.01		128.27		88.21			(*)		76.00			83.00				84.03	88.65	88.59	+ 0.4%			
01/04/2024	14	100.50		c	63.69	90.50	(*)		100.69	66.75	61.35		(*)		89.19			76.05		76.00			86.40				85.34	90.64	88.92	+ 0.4%			
08/04/2024	15	100.50		c	63.68	90.70	(*)		100.28	66.25	87.86		(*)		90.03			(*)		76.00			86.40				85.94	88.87	89.01	+ 0.1%			
15/04/2024	16	99.50		86.07	63.80	90.90	(*)		98.77	67.50	79.35		(*)		88.43			88.83		76.00			86.40				86.34	89.41	89.00	- 0.0%			

	BE	BG	CZ	DK	DE	EE	GR	ES	FR	HR	IE	IT	CY	LV	LT	LU	HU	MT	NL	AT	PL	PT	RO	SI	SK	FI	SE
Change 1 week	- 1.0%			+ 0.2%	+ 0.2%			- 1.5%	+ 1.9%	- 9.7%				- 1.8%					+ 0.0%			+ 0.0%				+ 0.5%	+ 0.6%
Change 4 weeks	- 1.0%			+ 0.2%	+ 0.6%			- 0.1%	+ 3.8%	- 1.7%				- 3.6%			+ 13.1%		+ 0.0%			+ 4.1%				+ 0.9%	+ 0.5%
Change 1 year	+ 8.2%			- 5.5%	+ 1.9%			- 1.9%	+ 0.4%	- 17.3%							- 18.7%		- 0.3%			- 1.8%				- 2.1%	+ 4.4%

EU (weighted avg.)
⇒ - 0.0%
⇒ + 0.8%
⇒ + 0.6%

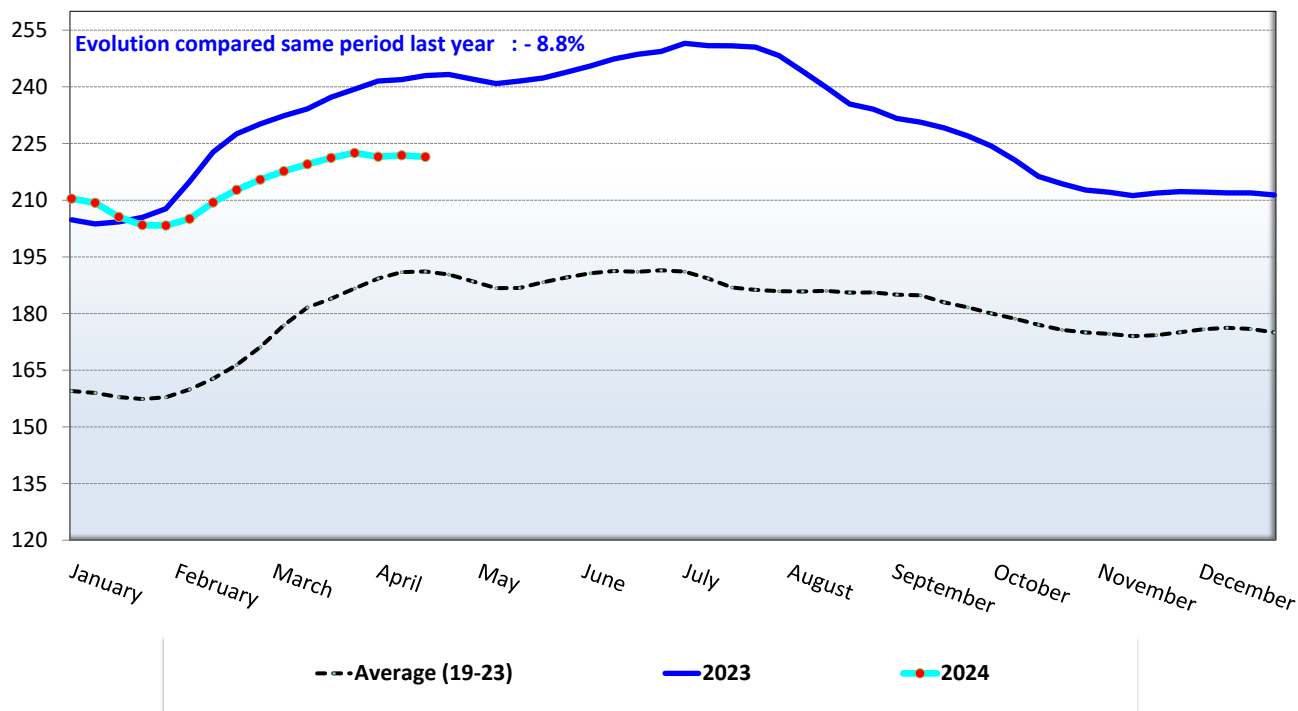
(*) Data unavailable

c Confidential

Evolution of the EU pig carcass prices (average class E & S)

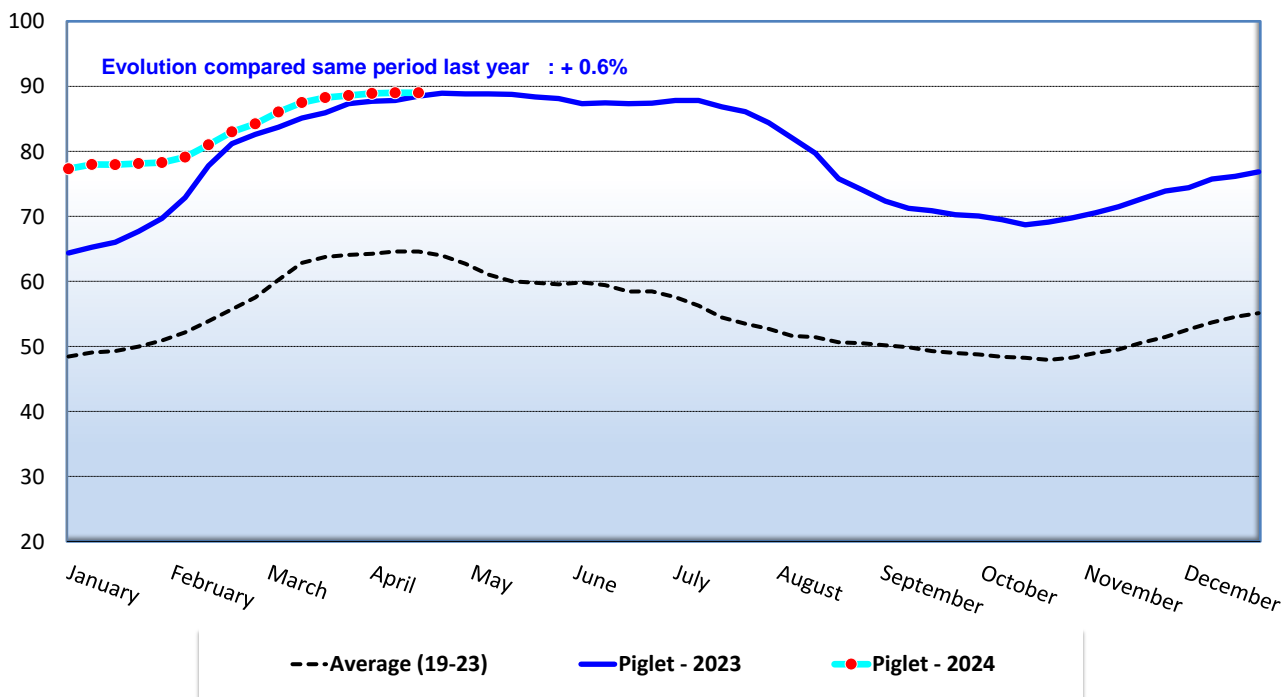
Week 16 latest price ==> 221.47 EUR/100 kg/cw

Source: EU Commission DG AGRI



Evolution of the EU average piglet prices (€/head)

Week 16 latest price ==> 89.00 EUR/head



15/04/2024	Class S & E €/100kg carcass weight	Piglet €/head
Week 16	221	89
1 week	-0.2%	0.0%
4 weeks	0.1%	0.8%
Year -1	-8.8%	0.6%
5 year avg	15.9%	37.8%

Meat Market Observatory - Pig



EUROPEAN COMMISSION

Directorate-General for Agriculture and Rural Development

E3. Animal Products

Monthly Market Prices for Pig Carcase Grade S in the E.U.

			Mar-2023	Apr-2023	May-2023	Jun-2023	Jul-2023	Aug-2023	Sep-2023	Oct-2023	Nov-2023	Dec-2023	Jan-2024	Feb-2024	Mar-2024	Change - 1 year
BE	Belgium	EUR / 100 Kg	228.64	233.79	235.15	245.41	251.19	240.75	227.15	216.92	212.18	213.53	208.32	208.47	219.15	- 4.2%
CZ	Czechia	EUR / 100 Kg	233.58	237.07	236.99	244.28	253.70	242.37	232.21	221.85	217.69	217.89	215.07	209.66	218.90	- 6.3%
	Czechia	CZK / 100kg	5 532.29	5 559.50	5 589.87	5 789.60	6 061.00	5 842.35	5 657.50	5 451.55	5 330.27	5 333.42	5 315.45	5 285.17	5 536.54	+ 0.1%
DK	Denmark	EUR / 100 Kg	187.18	202.52	209.40	210.21	210.56	208.95	198.72	192.30	195.17	197.14	193.65	186.08	190.71	+ 1.9%
	Denmark	DKK / 100 Kg	1 393.65	1 509.10	1 559.77	1 565.93	1 568.77	1 557.10	1 481.77	1 434.55	1 455.70	1 469.77	1 444.00	1 387.21	1 421.92	+ 2.0%
DE	Germany	EUR / 100 Kg	242.72	246.69	248.07	256.65	264.01	249.92	242.56	228.04	223.63	223.95	219.11	224.69	234.16	- 3.5%
EE	Estonia	EUR / 100 Kg	218.10	220.99	220.72	221.29	231.43	224.20	217.91	206.59	203.97	203.80				
IE	Ireland	EUR / 100 Kg	212.37	219.98	222.06	222.39	223.12	224.60	223.26	213.77	203.46	198.54	195.46	194.88	199.02	- 6.3%
EL	Greece	EUR / 100 Kg	255.79	260.74	264.36	270.47	271.75	262.76	252.04	246.46	242.29	243.06	235.05	235.43	242.11	- 5.3%
ES	Spain	EUR / 100 Kg	248.92	258.74	256.23	256.18	255.32	250.64	238.37	223.15	209.87	208.31	207.08	211.53	222.83	- 10.5%
FR	France	EUR / 100 Kg	245.94	252.37	238.16	239.40	250.42	240.74	232.03	211.81	197.93	196.90	198.29	204.83	220.00	- 10.5%
HR	Croatia	EUR / 100kg	229.71	229.77	236.61	241.73	249.42	219.16	197.61	216.92	192.77	217.03	217.53	215.26	223.76	- 2.6%
	Croatia	HRK / 100kg	1 731.21	1 731.64	1 783.23	1 821.82	1 879.75	1 651.71	1 489.25	1 634.83	1 452.82	1 635.68	1 639.40	1 622.28	1 686.40	- 2.6%
LV	Latvia	EUR / 100 Kg	232.06	252.77	254.71	260.79	269.84	247.85	235.70	227.46	221.08	230.11	224.60	217.37	229.83	- 1.0%
LT	Lithuania	EUR / 100 Kg	222.29	237.08	238.07	242.80	253.78	237.22	224.04	218.68	212.59	219.84	220.25	213.42	223.75	+ 0.7%
HU	Hungary	EUR / 100 Kg	238.74	245.15	250.66	260.65	260.28	251.19	242.49	228.88	225.91	232.62	220.38	216.37	228.59	- 4.3%
	Hungary	HUF / 100 Kg	91 967.59	92 176.46	93 409.22	96 624.85	98 603.94	96 746.62	93 538.80	88 271.81	85 671.88	88 788.57	84 086.35	83 959.95	90 146.82	- 2.0%
MT	Malta	EUR / 100 Kg	226.34	226.53	226.76	227.26	227.53	227.72	227.58	227.10	226.58	226.35	226.14	225.85	226.44	+ 0.0%
NL	Netherlands	EUR / 100 Kg	211.33	214.97	215.32	220.89	229.35	217.38	208.41	199.81	196.37	196.41	177.01	177.45	185.25	- 12.3%
AT	Austria	EUR / 100 Kg	254.88	258.89	259.43	266.90	274.84	262.96	256.03	244.96	236.29	237.92	232.64	235.80	246.75	- 3.2%
PL	Poland	EUR / 100 Kg	235.73	252.25	254.19	268.67	266.88	241.06	231.23	226.79	227.40	221.83	209.15	215.11	222.63	- 5.6%
	Poland	PLN / 100 Kg	1 106.13	1 170.54	1 153.76	1 199.47	1 186.78	1 074.05	1 061.19	1 025.96	1 001.74	961.55	912.23	931.04	958.73	- 13.3%
PT	Portugal	EUR / 100 Kg	259.04	266.69	266.74	266.74	267.00	262.58	248.73	232.63	218.94	217.08	216.90	220.35	233.50	- 9.9%
RO	Romania	EUR / 100 Kg	233.93	236.99	260.67	280.64	271.22	265.06	257.55	242.31	236.84	259.84	243.52	213.35	229.13	- 2.1%
	Romania	RON / 100 Kg	1 151.99	1 170.25	1 289.50	1 391.89	1 340.84	1 309.83	1 278.31	1 203.93	1 177.05	1 291.63	1 211.47	1 061.42	1 138.91	- 1.1%
SI	Slovenia	EUR / 100 Kg	259.28	263.60	264.50	272.11	280.85	270.09	262.70	250.71	243.33	242.65	237.12	238.42	249.83	- 3.6%
SK	Slovakia	EUR / 100 Kg	226.50	236.53	240.89	254.07	261.15	248.41	236.88	228.93	223.59	223.08	218.05	211.87	223.86	- 1.2%
FI	Finland	EUR / 100 Kg	230.74	231.09	229.44	229.78	228.99	227.67	227.80	227.14	226.77	227.35	224.58	221.54	221.36	- 4.1%
SE	Sweden	EUR / 100 Kg	229.19	227.58	228.49	224.05	224.32	222.42	219.88	224.22	226.40	234.27	232.54	233.56	234.84	+ 2.5%
	Sweden	EUR / 100 Kg	2 571.58	2 580.07	2 594.03	2 612.17	2 613.13	2 625.71	2 605.33	2 609.32	2 618.40	2 624.23	2 621.45	2 628.41	2 641.79	+ 2.7%
EU		EUR / 100 Kg	236.35	244.08	243.29	247.88	251.25	241.93	230.96	219.14	211.86	211.88	207.41	209.85	219.94	- 6.9%

Meat Market Observatory - Pig



EUROPEAN COMMISSION

Directorate-General for Agriculture and Rural Development

E3. Animal Products

Monthly Market Prices for Pig Carcase Grade E in the E.U.

		Mar-2023	Apr-2023	May-2023	Jun-2023	Jul-2023	Aug-2023	Sep-2023	Oct-2023	Nov-2023	Dec-2023	Jan-2024	Feb-2024	Mar-2024	Change - 1 year	
BE	Belgium	EUR / 100 Kg	219.30	224.07	225.29	235.89	241.62	231.26	217.34	208.29	204.07	205.50	201.05	201.87	212.52	- 3.1%
BG	Bulgaria	EUR / 100 Kg	264.31	276.04	276.23	276.38	273.75	272.43	269.06	267.90	260.87	259.28	256.81	253.86	255.50	- 3.3%
	Bulgaria	BGN/ 100 Kg	516.94	539.87	540.25	540.55	535.39	532.81	526.23	523.96	510.22	507.11	502.27	496.51	499.71	- 3.3%
CZ	Czechia	EUR / 100 Kg	227.85	231.90	231.53	238.27	247.77	237.13	227.20	217.24	213.17	213.59	210.77	205.55	214.32	- 5.9%
	Czechia	CZK/ 100kg	5 396.55	5 438.27	5 460.94	5 647.07	5 919.32	5 716.00	5 535.33	5 338.19	5 219.60	5 228.13	5 209.13	5 181.66	5 420.67	+ 0.4%
DK	Denmark	EUR / 100 Kg	181.06	196.87	206.18	207.35	207.23	205.78	196.05	189.40	192.30	194.53	190.77	182.77	187.00	+ 3.3%
	Denmark	DKK / 100 Kg	1 348.06	1 466.97	1 535.84	1 544.63	1 543.94	1 533.52	1 461.80	1 412.97	1 434.23	1 450.32	1 422.58	1 362.48	1 394.29	+ 3.4%
DE	Germany	EUR / 100 Kg	239.11	243.11	244.42	252.93	260.23	246.96	238.91	224.59	220.22	220.59	215.76	221.56	230.73	- 3.5%
EE	Estonia	EUR / 100 Kg	213.50	215.71	215.82	216.04	227.44	219.27	214.24	202.16	201.60	200.36				
IE	Ireland	EUR / 100 Kg	212.24	219.76	221.92	222.41	223.26	224.71	223.34	213.71	203.34	198.34	195.02	194.39	198.70	- 6.4%
EL	Greece	EUR / 100 Kg	255.79	260.74	264.36	270.47	271.75	262.76	252.04	246.46	242.29	243.06	235.05	235.43	242.11	- 5.3%
ES	Spain	EUR / 100 Kg	238.33	248.59	247.33	247.40	248.70	243.15	231.53	216.15	201.99	199.95	199.30	201.68	214.38	- 10.0%
FR	France	EUR / 100 Kg	242.00	245.30	230.39	232.03	242.97	233.74	215.80	204.81	190.93	189.90	191.19	196.59	211.71	- 12.5%
HR	Croatia	EUR / 100kg	233.23	235.33	239.94	246.70	255.74	228.65	197.38	213.89	197.12	192.14	206.06	202.71	222.21	- 4.7%
	Croatia	HRK / 100kg	1 757.71	1 773.59	1 808.27	1 859.25	1 927.40	1 723.18	1 487.54	1 611.99	1 485.61	1 448.09	1 552.99	1 527.69	1 674.65	- 4.7%
CY	Cyprus	EUR / 100 Kg	241.71	241.14	243.11	249.16	256.98	255.71	254.64	254.54	253.13	254.17	254.41	255.16	255.68	+ 5.8%
LV	Latvia	EUR / 100 Kg	243.15	261.16	260.56	268.80	276.18	250.28	242.54	233.59	228.87	240.43	234.09	226.87	237.57	- 2.3%
LT	Lithuania	EUR / 100 Kg	230.00	244.48	249.64	254.84	264.53	244.15	232.76	223.59	219.42	225.50	223.48	216.26	225.96	- 1.8%
HU	Hungary	EUR / 100 Kg	235.20	241.13	247.05	257.43	255.85	247.17	237.90	225.20	221.65	231.18	216.71	210.49	224.00	- 4.8%
	Hungary	HUF / 100 Kg	90 605.48	90 664.55	92 064.08	95 432.05	96 923.69	95 194.79	91 767.36	86 855.11	84 057.23	88 240.72	82 682.21	81 677.20	88 336.42	- 2.5%
MT	Malta	EUR / 100 Kg	225.50	225.46	225.60	226.11	227.11	226.53	226.02	226.53	225.75	225.83	225.68	225.12	225.41	- 0.0%
NL	Netherlands	EUR / 100 Kg	210.19	213.83	214.18	219.75	228.21	216.24	207.27	198.67	195.23	195.27	175.87	176.31	184.11	- 12.4%
AT	Austria	EUR / 100 Kg	243.65	247.95	248.30	256.21	263.74	252.17	244.57	233.73	225.49	226.58	221.68	225.80	236.30	- 3.0%
PL	Poland	EUR / 100 Kg	234.10	250.35	252.55	266.69	265.24	239.45	229.48	224.82	225.32	219.51	207.15	213.24	220.42	- 5.8%
	Poland	PLN / 100 Kg	1 098.49	1 161.71	1 146.31	1 190.65	1 179.47	1 066.88	1 053.16	1 017.05	992.57	951.48	903.54	922.93	949.19	- 13.6%
PT	Portugal	EUR / 100 Kg	259.45	267.30	267.36	267.36	267.45	263.09	249.34	233.34	219.79	218.17	217.96	221.26	234.61	- 9.6%
RO	Romania	EUR / 100 Kg	232.01	235.13	260.83	279.88	269.44	264.61	256.67	242.64	235.23	255.26	239.42	213.21	226.79	- 2.2%
	Romania	RON / 100 Kg	1 142.55	1 161.10	1 290.29	1 388.14	1 332.08	1 307.61	1 273.94	1 205.59	1 169.06	1 268.87	1 191.04	1 060.74	1 127.28	- 1.3%
SI	Slovenia	EUR / 100 Kg	239.66	241.92	243.03	251.69	262.29	251.54	245.59	233.22	225.14	225.00	220.21	221.15	231.42	- 3.4%
SK	Slovakia	EUR / 100 Kg	234.17	238.39	244.91	255.82	258.49	248.79	243.37	233.07	225.35	230.29	225.06	223.70	232.29	- 0.8%
FI	Finland	EUR / 100 Kg	224.29	224.30	222.17	221.67	221.02	220.80	220.92	219.57	219.34	219.63	217.81	213.87	213.37	- 4.9%
SE	Sweden	EUR / 100 Kg	226.44	224.76	225.79	220.79	220.53	218.46	216.51	220.53	222.51	230.58	228.89	230.15	230.66	+ 1.9%
	Sweden	SEK / 100 Kg	2 540.71	2 548.10	2 563.35	2 574.07	2 569.06	2 578.97	2 565.47	2 566.39	2 573.43	2 582.90	2 580.29	2 589.97	2 594.71	+ 2.1%
EU		EUR / 100 Kg	231.14	238.39	239.05	245.48	249.66	238.03	228.32	217.90	212.21	211.94	205.42	207.58	216.85	- 6.2%

Meat Market Observatory - Pig



EUROPEAN COMMISSION

Directorate-General for Agriculture and Rural Development

E3. Animal Products

Monthly Market Prices for Pig Carcase Grade R in the E.U.

		Mar-2023	Apr-2023	May-2023	Jun-2023	Jul-2023	Aug-2023	Sep-2023	Oct-2023	Nov-2023	Dec-2023	Jan-2024	Feb-2024	Mar-2024	Change - 1 year	
CZ	Czechia	EUR / 100 Kg	188.01	191.65	188.79	202.54	213.72	198.61	195.57	184.83	179.47	177.71	181.46	172.82	183.87	- 2.2%
CZ	Czechia	CZK / 100 Kg	4 453.00	4 494.30	4 453.03	4 800.37	5 105.74	4 787.58	4 763.70	4 542.16	4 394.57	4 349.97	4 484.90	4 357.00	4 650.58	+ 4.4%
DE	Germany	EUR / 100 Kg	210.97	215.34	217.26	224.62	232.00	219.75	210.96	197.63	194.46	194.88	188.94	192.78	202.50	- 4.0%
EL	Greece	EUR / 100 Kg	242.22	249.20	250.01	251.22	250.59	245.78	234.78	218.33	207.48	206.76	207.74	209.89	222.52	- 8.1%
ES	Spain	EUR / 100 Kg	262.45	256.18	263.37	255.63	268.04	282.24	276.17	289.12	283.87	274.97	265.94	256.70	252.89	- 3.6%
IT	Italy	EUR / 100 Kg	179.55	226.71	226.71	226.71										
LV	Latvia	EUR / 100 Kg	213.61	225.71	232.58	229.58	243.86	231.21	222.73	211.81	210.40	217.35	212.94	204.12	219.69	+ 2.8%
LT	Lithuania	EUR / 100 Kg	211.27			228.37	237.19	226.21		197.80						
LU	Luxembourg	EUR / 100 Kg	193.88													
SK	Slovakia	EUR / 100 Kg	208.87	190.79	216.58	231.43	250.95						207.33	220.68	+ 5.7%	
EU		EUR / 100 Kg	257.42	252.96	259.30	253.37	264.74	275.85	269.23	278.29	272.71	265.04	256.98	249.35	247.68	- 3.8%

Meat Market Observatory - Pig



EUROPEAN COMMISSION

Directorate-General for Agriculture and Rural Development

E3. Animal Products

Monthly Market Prices for Piglets in the E.U.

		Mar-2023	Apr-2023	May-2023	Jun-2023	Jul-2023	Aug-2023	Sep-2023	Oct-2023	Nov-2023	Dec-2023	Jan-2024	Feb-2024	Mar-2024	Change - 1 year	
BE	Belgium	EUR / piece	89.90	92.00	92.10	93.80	94.35	82.69	72.40	70.23	72.87	82.42	85.15	90.78	99.13	+ 10.3%
DK	Denmark	EUR / piece	59.56	66.55	69.33	69.42	70.19	69.61	66.29	64.32	66.60	67.19	63.05	61.16	63.44	+ 6.5%
	Denmark	DKK / piece	443.45	495.90	516.45	517.17	522.97	518.71	494.30	479.81	496.70	500.90	470.19	455.93	473.04	+ 6.7%
DE	Germany	EUR / piece	85.06	88.31	90.14	95.50	98.55	91.77	84.98	78.38	75.93		78.75	83.58	90.22	+ 6.1%
ES	Spain	EUR / piece	99.65	100.73	99.31	92.35	90.04	75.34	60.68	62.58	70.51	79.29	85.75	89.34	96.97	- 2.7%
FR	France	EUR / piece	65.48	67.16	67.59	68.14	69.31	68.43	64.01	60.69	59.20	59.36	59.72	60.29	63.44	- 3.1%
HR	Croatia	EUR / piece	85.03	95.84	108.58	116.03	117.95	114.10	98.96	97.29	101.11	57.16	53.74	80.81	71.80	- 15.6%
	Croatia	HRK / piece	640.85	722.30	818.32	874.44	888.92	859.94	745.80	733.26	761.99	430.76	405.00	609.01	541.13	- 15.6%
IT	Italy	EUR / piece	109.45	114.54	114.77	113.33	110.84	110.52	108.47	103.81	101.70	103.82	109.87	117.67	124.33	+ 13.6%
HU	Hungary	EUR / piece	86.93	109.57	105.77	94.72	71.41	66.58	66.53	70.83	72.39	74.68	78.14	73.94	75.75	- 12.9%
	Hungary	HUF / piece	33 596.99	41 200.00	39 417.20	35 106.88	27 050.69	25 646.77	25 664.36	27 309.04	27 453.51	28 506.36	29 815.67	28 688.86	29 875.00	- 11.1%
NL	Netherlands	EUR / piece	74.16	75.98	76.32	74.27	73.52	62.94	54.65	53.35	56.15	62.35	63.75	67.39	74.52	+ 0.5%
PT	Portugal	EUR / piece	87.52	88.00	89.35	88.00	86.13	86.00	78.63	65.35	67.59	70.80	72.01	76.86	81.75	- 6.6%
FI	Finland	EUR / piece	85.66	87.72	88.32	86.78	86.87	88.52	89.00	88.39	88.95	88.33	87.76	85.66	85.73	+ 0.1%
SE	Sweden	EUR / piece	85.75	86.55	86.43	85.50	85.51	83.86	82.86	85.75	86.30	90.52	88.75	88.85	89.95	+ 4.9%
	Sweden	SEK / piece	962.12	981.24	981.23	996.85	996.13	989.91	981.76	997.89	998.07	1 013.78	1 000.41	999.82	1 011.87	+ 5.2%
EU		EUR / piece	84.93	88.18	88.64	87.48	87.09	79.55	71.49	69.40	71.59	75.61	77.89	81.10	86.90	+ 2.3%