



European  
Commission

June 2021

## Statistical Factsheet

# Austria



### CONTENTS

Main figures	1
1. KEY DATA	2
2. POPULATION & ECONOMY	3-4
3. FINANCIAL ASPECTS	5-6
4. ECONOMIC ACCOUNTS	7-13
5. AGRICULTURAL TRADE	14-15
6. FARM STRUCTURE	16-18

Main figures - Year 2020		
Population (1 <sup>st</sup> January)	8 901 064	persons
Area*	83 878	km <sup>2</sup>
Currency	EUR	euro
Nominal GDP at current prices	375 562	million EUR
GDP per capita at current prices	42 293	EUR
GDP per capita at purchasing power	37 300	PPS
Harmonised index of consumer prices	1.5%	change over previous year
Unemployment rate	5.5	% of labour force
Exports (goods & services)	193 884	million EUR (current prices)
Imports (goods & services)	184 905	million EUR (current prices)
Balance (goods & services)	8 979	million EUR (current prices)
Exports of agricultural products	13 466	million EUR (current prices)
Imports of agricultural products	13 112	million EUR (current prices)
Current account balance	2.1	% of GDP
General government balance	-9.6	% of GDP
General government gross debt	84.2	% of GDP

Sources: European Commission, Eurostat (Online Data Table: [urt\\_d3area](#), [urt\\_pjanaggr3](#)), and Directorate General for Economic and Financial Affairs.

\*Data refer to the year 2016

(e) Estimation

Updated: June 2021

## 1. KEY DATA

Macroeconomics				
<b>Population</b>				
<b>Total population (number of persons), of which:</b>	<b>2020</b>	<b>8 901 064</b>	<b>2.0%</b>	<b>of EU27_2020</b>
in predominantly rural regions	2020	40.2%	20.8%	in EU27_2020
in intermediate regions	2020	27.7%	38.9%	in EU27_2020
in predominantly urban regions	2020	32.1%	40.3%	in EU27_2020
<b>Population in Predominantly rural regions (Persons)</b>	<b>2020</b>	<b>3 574 669</b>	<b>3.8%</b>	<b>of EU27_2020</b>
<b>GDP (current basic prices)</b>				
Total (million EUR)	2020	375 562	2.8%	of EU27_2020
GDP per capita (EUR/person)	2020	42 293	29 355	in EU27_2020
GDP per capita (PPS/person)	2020	37 300	29 700	in EU27_2020
Real GDP growth rate (% change over previous year)	2020	-7.1%	-7.4%	in EU27_2020
<b>Gross value added</b>				
Agriculture, forestry and fishing (% of total GVA)	2020	1.3%	1.9%	in EU27_2020
<b>Financial aspects</b>				
<b>Common Agricultural Policy expenditure</b>				
<b>Total expenditure (million EUR), of which:</b>	<b>2020</b>	<b>1 281</b>	<b>2.3%</b>	<b>of EU27_2020</b>
Direct payments (%)	2020	54.0%	69.9%	in EU27_2020
Market measures (%)	2020	1.7%	4.6%	in EU27_2020
Rural development (%)	2020	44.3%	25.5%	in EU27_2020
<b>Economic accounts of agriculture</b>				
<b>Agricultural output (current basic prices)</b>				
<b>Agricultural output (million EUR), of which:</b>	<b>2020 (e)</b>	<b>7 254</b>	<b>1.8%</b>	<b>of EU27_2020</b>
<b>Crop output, of which:</b>		<b>46.8%</b>	<b>1.6%</b>	<b>of EU27_2020</b>
Cereals (including seeds)		12.2%	1.9%	of EU27_2020
Industrial crops		4.1%	1.6%	of EU27_2020
Forage plants		7.5%	2.2%	of EU27_2020
Vegetables and horticultural products		10.2%	1.3%	of EU27_2020
Potatoes		1.2%	0.7%	of EU27_2020
Fruits		4.1%	1.0%	of EU27_2020
Wine		7.4%	2.4%	of EU27_2020
Olive oil		0.0%	0.0%	of EU27_2020
<b>Animal output, of which:</b>		<b>49.4%</b>	<b>2.3%</b>	<b>of EU27_2020</b>
Cattle		10.4%	2.7%	of EU27_2020
Pigs		11.5%	2.1%	of EU27_2020
Sheep and goats		0.5%	0.9%	of EU27_2020
Poultry		2.9%	1.1%	of EU27_2020
Milk		19.2%	2.6%	of EU27_2020
Eggs		4.1%	3.3%	of EU27_2020
Gross value added at current prices (million EUR)	2020 (e)	3 241	1.8%	of EU27_2020
<b>Agricultural input (current basic prices)</b>				
Total intermediate consumption (million EUR)	2020 (e)	4 471	1.9%	of EU27_2020
<b>Agricultural income (real prices)</b>				
Agricultural Income*(% change over previous year, 2010=100)	2020 (e)	5.4%	-1.2%	in EU27_2020
<b>Farm structure</b>				
<b>Holdings</b>				
<b>Total (No), of which:</b>	<b>2016</b>	<b>132 500</b>	<b>1.3%</b>	<b>of EU27_2020</b>
UAA < 5 ha (%)	2016	31.0%	66.6%	in EU27_2020
Economic size < 4 000 €	2016	20.0%	54.9%	in EU27_2020
Holder < 35 years (%)	2016	12.2%	5.1%	in EU27_2020
Holder > 64 years (%)	2016	7.3%	32.8%	in EU27_2020
UAA per holding (ha)	2016	20.1	15.2	in EU27_2020
<b>Labour force</b>				
AWU (No)	2016	:	:	of EU27_2020
Female farm holders (%)	2016	29.2%	30.7%	in EU27_2020
Male farm holders (%)	2016	70.8%	68.8%	in EU27_2020
Agriculture in % of total employment	2020	3.6%	4.0%	in EU27_2020

Sources: European Commission(Ameco), Eurostat(Online Data Table: urt\_pjanaggr3, aact\_eaa01, ef\_m\_farmleg, ef\_m\_farmang, ef\_if\_main, lfsa\_egan2) and Directorate General for Agriculture and Rural Development.

\*Indicator A- See definition at page 10

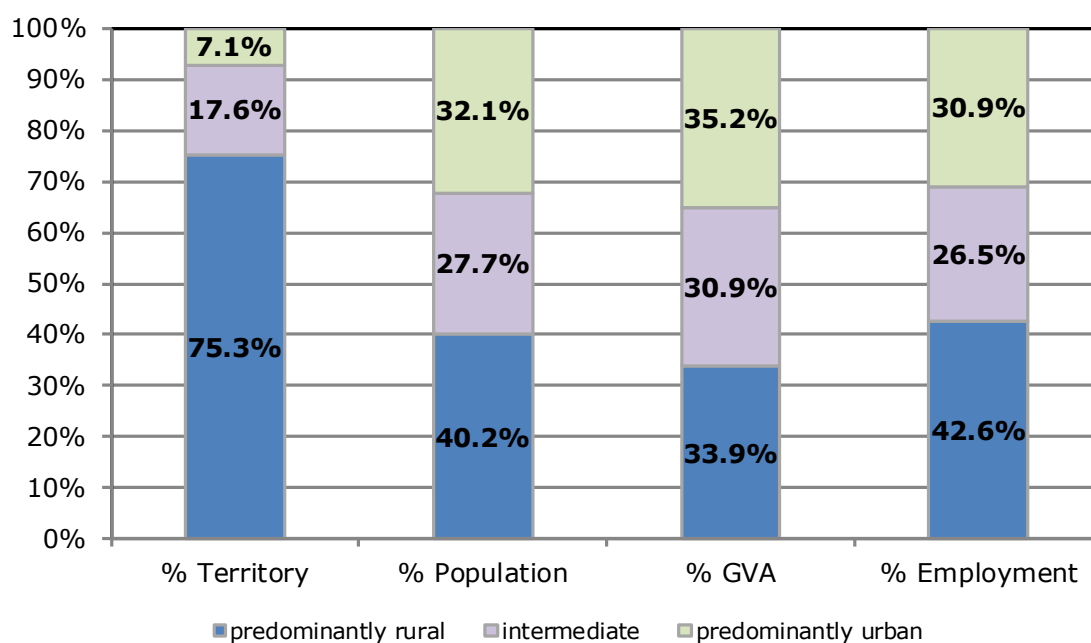
## 2. POPULATION AND ECONOMY

### Importance of rural areas

	Territory (km <sup>2</sup> )	Population (persons)	GVA (Million EUR)	Employment (persons)
Year	2016	2020	2018	2019
Predominantly Rural Regions	63 142	3 574 669	116 603	1 824 800
Intermediate Regions	14 777	2 465 056	106 516	1 133 600
Predominantly Urban Regions	5 959	2 861 339	121 100	1 321 800
<b>Total</b>	<b>83 878</b>	<b>8 901 064</b>	<b>344 219</b>	<b>4 280 200</b>

Source: Eurostat (Online Data Table: urt\_d3area, urt\_pjanagr3, urt\_10r\_3gva, urt\_lfe3emp)

Updated: June 2021



Degree of urbanisation	Share of land (%)	Share of population (%)
	2018	2018
Rural areas	86.6%	39.2%
Towns and suburbs	12.3%	30.8%
Cities	1.1%	29.9%

Source: Eurostat, GISCO

\*Based on 2011 population grid, LAU 2018 delineation and NUTS 2016.

## 2. POPULATION AND ECONOMY

### Economic forecast

Indicators	2013	2014	2015	2016	2017	2018	2019	2020	2021(f)	2022(f)
<b>GDP</b>										
In million EUR (current prices)	323 910	333 146	344 269	357 608	369 341	385 362	397 575	375 562	393 526	417 274
Per capita (in PPS; current prices)	34 600	35 000	35 900	36 600	37 300	38 700	39 500	37 300	38 900	40 900
<b>% change over previous period</b>										
GDP growth at constant prices (2015=100)	0.0%	0.7%	1.0%	2.0%	2.4%	2.6%	1.4%	-7.1%	4.1%	2.5%
GDP deflator (2015=100)	1.6%	2.2%	2.3%	1.8%	0.9%	1.7%	1.7%	2.0%	1.9%	1.6%
Harmonised index of consumer prices	2.1%	1.5%	0.8%	1.0%	2.2%	2.1%	1.5%	1.5%	1.7%	1.7%
Exports (goods and services)	0.6%	2.9%	3.0%	3.0%	4.9%	5.5%	2.9%	-11.5%	5.5%	3.8%
Imports (goods and services)	0.7%	3.0%	3.6%	3.7%	5.3%	5.0%	2.4%	-9.4%	4.8%	3.1%
<b>Net exports of goods and services (million EUR)</b>	<b>9 122</b>	<b>10 893</b>	<b>12 913</b>	<b>13 699</b>	<b>11 683</b>	<b>12 606</b>	<b>13 404</b>	<b>8 979</b>	<b>10 872</b>	<b>12 569</b>
<b>% of total employment</b>										
Unemployment rate	5.4	5.6	5.7	6.0	5.5	4.9	4.5	5.5	5.1	4.9
<b>% of GDP</b>										
Current account balance	1.9	2.5	1.7	2.7	1.4	1.3	2.8	2.1	2.8	3.0
General government balance	-2.0	-2.7	-1.0	-1.5	-0.8	0.2	0.7	-9.6	-6.4	-3.7
General government gross debt	81.3	84.0	84.9	82.8	78.5	74.0	70.5	84.2	85.2	85.1

Source: European Commission, Directorate General for Economic and Financial Affairs

Updated: June 2021

f: forecast

## 3.1. AGRICULTURE: FINANCIAL ASPECTS

### CAP expenditure

Measures	2020		2020	
	1 000 EUR		% of total	% of heading
Decoupled direct aids	668 390		52.2%	96.6%
Other direct aids	16 033		1.3%	2.3%
Additional amounts of aid	0		0.0%	0.0%
Reimbursement of direct aids in relation to financial discipline	7 175		0.6%	1.0%
<b>Direct payments (Total)</b>	<b>691 597</b>		<b>54.0%</b>	<b>100.0%</b>
Olive oil	0		0.0%	0.0%
Textile plants	0		0.0%	0.0%
Fruit and vegetables	5 073		0.4%	22.8%
Wine sector	13 688		1.1%	61.4%
Promotion			0.0%	0.0%
Other plant products/measures			0.0%	0.0%
Milk and milk products	42		0.0%	0.2%
Beef and veal	20		0.0%	0.1%
Sheepmeat and goatmeat	0		0.0%	0.0%
Pigmeat, eggs, poultry and other	877		0.1%	3.9%
School schemes*	2 598		0.2%	11.7%
<b>Market measures (Total)</b>	<b>22 298</b>		<b>1.7%</b>	<b>100%</b>
<b>Rural development (Total)</b>	<b>567 266</b>		<b>44.3%</b>	<b>100%</b>
<b>TOTAL</b>	<b>1 281 161</b>		<b>100.0%</b>	

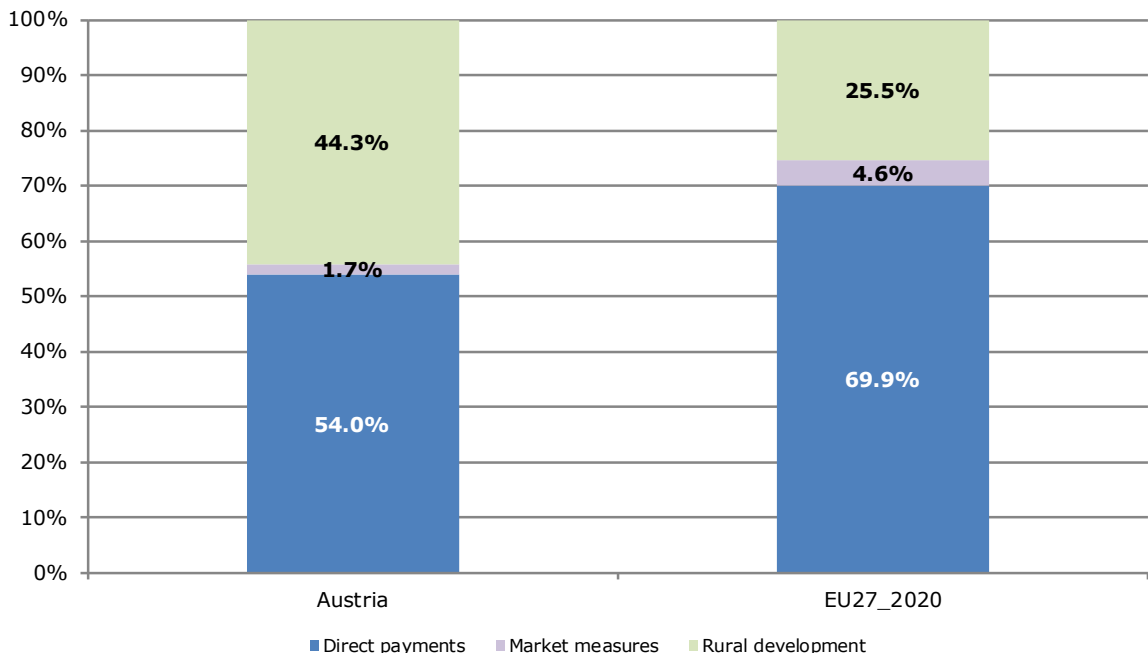
Note: Expenditure in commitments for direct payments and market measures; ceilings of support for rural development. Negative values represent beneficiaries that in total reimbursed money to the EAGF (recoveries, corrections, etc.)

\* Programme implementation based on school years; reimbursement possible in the next financial year

Source: European Commission, Directorate General for Agriculture and Rural Development

Updated: June 2021

### Distribution of CAP expenditure



## 3.2. AGRICULTURE: FINANCIAL ASPECTS

### Distribution of direct aids to the producers

Size-class of aid (all direct payments)	Financial year 2019*			
	Beneficiaries		Payments in EUR	
	x 1 000	% of total	x 1 000	% of total
< 0 €	0.01	0.01%	-39	0.0%
≥ 0 and < 500 €	2.41	2.26%	944	0.1%
≥ 500 and < 1 250 €	16.97	15.94%	14 659	2.1%
≥ 1 250 and < 2 000 €	10.57	9.92%	17 053	2.5%
≥ 2 000 and < 5 000 €	30.63	28.77%	103 440	15.0%
≥ 5 000 and < 10 000 €	25.21	23.67%	179 124	25.9%
≥ 10 000 and < 20 000 €	15.99	15.02%	219 892	31.8%
≥ 20 000 and < 50 000 €	4.26	4.00%	118 648	17.2%
≥ 50 000 and < 100 000 €	0.35	0.33%	22 800	3.3%
≥ 100 000 and < 150 000 €	0.05	0.04%	5 590	0.8%
≥ 150 000 and < 200 000 €	0.02	0.01%	2 634	0.4%
≥ 200 000 and < 250 000 €	0.01	0.01%	1 353	0.2%
≥ 250 000 and < 300 000 €	0.01	0.00%	1 325	0.2%
≥ 300 000 and < 500 000 €	0.00	0.00%	1 417	0.2%
≥ 500 000 €	0.00	0.00%	2 271	0.3%
<b>Total</b>	<b>106.46</b>	<b>100%</b>	<b>691 111</b>	<b>100%</b>

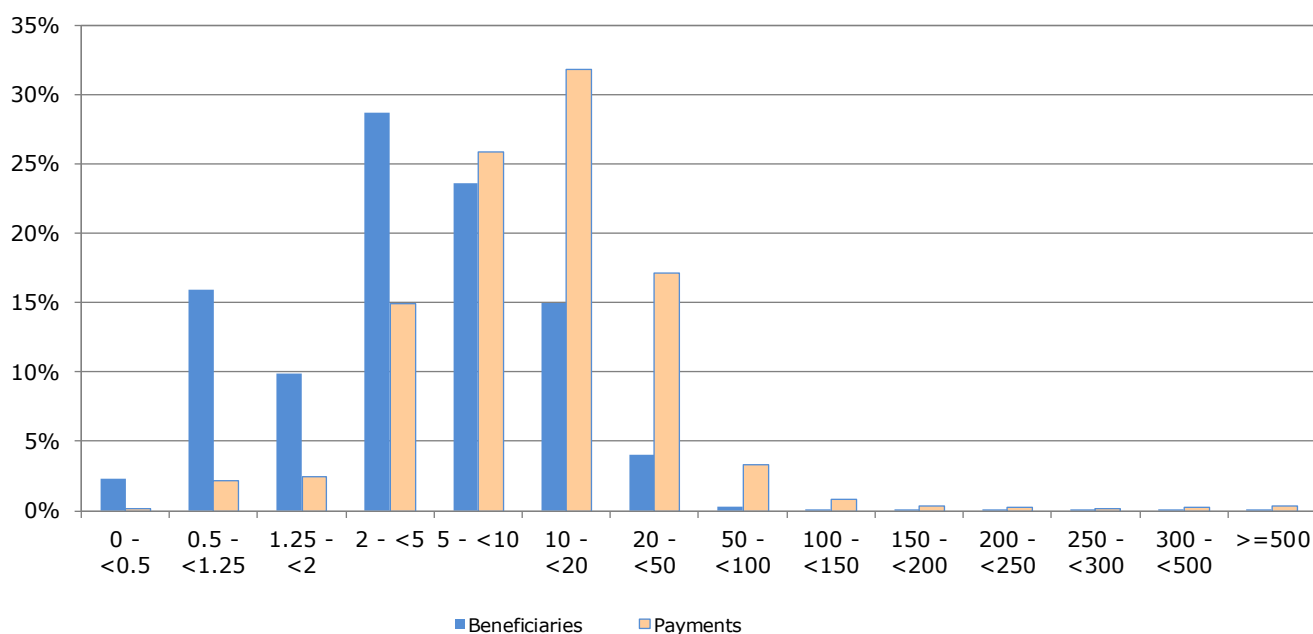
Source: European Commission, Directorate General for Agriculture and Rural Development.

\* Figures for financial year 2020 will become available during the second half of 2021. Negative values represent beneficiaries that in total reimbursed money to the EAGF (recoveries, corrections, etc.)

Note: In order to protect the anonymity of the beneficiaries, numbers less than 10 have been made invisible in this table.

Updated: June 2021

#### Indicative figures on the distribution of direct aid by size-class of aid (1 000 EUR)



## 4.1. AGRICULTURE: ECONOMIC ACCOUNTS

### Agricultural output

Output components (real prices)	2018	2019	2020 (e)		
	Million EUR		Million EUR	% of total	% of EU27_2020
<b>Cereals:</b>	<b>673</b>	<b>683</b>	<b>744</b>	<b>12.7%</b>	<b>1.8%</b>
Wheat and spelt	204	216	230	4%	1.2%
Rye and meslin	25	25	24	0%	2.1%
Barley	88	98	96	2%	1.3%
Oats and summer cereal mixtures	10	10	10	0%	0.7%
Grain maize	299	286	336	6%	3.5%
Rice		0	0	0%	0.0%
Other cereals	47	47	48	1%	2.9%
<b>Industrial crops:</b>	<b>214</b>	<b>233</b>	<b>252</b>	<b>4.3%</b>	<b>1.5%</b>
Oil seeds and oleaginous fruits	148	165	184	3%	2.0%
Protein crops	9	7	8	0%	0.8%
Raw tobacco		0	0	0%	0.0%
Sugar beet	47	50	50	1%	2.9%
Other industrial crops	10	11	10	0%	0.2%
<b>Forage plants</b>	<b>416</b>	<b>426</b>	<b>456</b>	<b>7.8%</b>	<b>2.1%</b>
<b>Vegetables and horticultural products</b>	<b>590</b>	<b>622</b>	<b>622</b>	<b>10.6%</b>	<b>1.2%</b>
<b>Potatoes</b>	<b>74</b>	<b>96</b>	<b>76</b>	<b>1.3%</b>	<b>0.7%</b>
<b>Fruits</b>	<b>264</b>	<b>194</b>	<b>249</b>	<b>4.3%</b>	<b>0.9%</b>
<b>Wine</b>	<b>494</b>	<b>431</b>	<b>451</b>	<b>8%</b>	<b>2.3%</b>
<b>Olive oil</b>		<b>0</b>	<b>0</b>	<b>0%</b>	<b>0.0%</b>
<b>Other crop products</b>	<b>3</b>	<b>3</b>	<b>3</b>	<b>0%</b>	<b>0.2%</b>
<b>Crop output</b>	<b>2 728</b>	<b>2 687</b>	<b>2 854</b>	<b>48.6%</b>	<b>1.5%</b>
<b>Animals:</b>	<b>1 582</b>	<b>1 640</b>	<b>1 557</b>	<b>26.5%</b>	<b>1.9%</b>
Cattle	731	691	632	10.8%	2.6%
Pigs	626	725	702	12.0%	2.0%
Equines	0	0	0	0.0%	0.0%
Sheep and goats	26	29	29	0.5%	0.8%
Poultry	178	174	175	3.0%	1.0%
Other animals	21	21	18	0.3%	0.9%
<b>Animal products:</b>	<b>1 459</b>	<b>1 432</b>	<b>1 456</b>	<b>24.8%</b>	<b>2.5%</b>
Milk	1 187	1 155	1 174	20.0%	2.5%
Eggs	247	246	253	4.3%	3.1%
Other animal products	26	30	29	0.5%	1.3%
<b>Animal output</b>	<b>3 041</b>	<b>3 072</b>	<b>3 013</b>	<b>51.4%</b>	<b>2.1%</b>
<b>Agricultural goods output</b>	<b>5 769</b>	<b>5 758</b>	<b>5 866</b>	<b>100.0%</b>	<b>1.7%</b>

(e) 2020 data are estimates and may still change.

Updated: June 2021

Source: Eurostat(Online Data Table: aact\_eaa04), Economic Accounts for Agriculture (Production value at basic price).

## 4.2. AGRICULTURE: ECONOMIC ACCOUNTS

### Agricultural input

Input components (real prices)	2018	2019	2020 (e)	2019/2018	2020 (e) /2019
	Million EUR			% Change	
Seeds and planting stock	156	164	164	5.7%	-0.5%
Energy	348	352	324	1.1%	-7.8%
Fertilisers and soil improvers	127	132	123	3.7%	-7.0%
Plant protection products	112	102	103	-8.7%	1.1%
Veterinary expenses	116	117	118	0.3%	1.3%
Feedingstuffs	1 298	1 324	1 354	2.0%	2.2%
Maintenance of materials	273	281	288	2.8%	2.5%
Maintenance of buildings	69	69	72	0.3%	4.1%
Agricultural services	235	224	236	-4.7%	5.1%
Other goods and services	832	858	854	3.2%	-0.5%
<b>Total intermediate consumption</b>	<b>3 677</b>	<b>3 751</b>	<b>3 761</b>	<b>2.0%</b>	<b>0.3%</b>
<b>Fixed capital consumption</b>	<b>1 564</b>	<b>1 585</b>	<b>1 614</b>	<b>1.4%</b>	<b>1.8%</b>

(e) 2020 data are estimates and may still change.

Source: Eurostat(Online Data Table: aact\_eaa04), Economic Accounts for Agriculture (Production value at basic price)

Updated: June 2021

### Agricultural income

By category of product (real prices)	2018	2019	2020 (e)	2019/2018	2020 (e) /2019
	Million EUR			% Change	
<b>Output of the agricultural "industry":</b>	<b>6 384</b>	<b>6 368</b>	<b>6 488</b>	<b>-0.3%</b>	<b>1.9%</b>
Crop output	2 728	2 687	2 854	-1.5%	6.2%
Animal output:	3 041	3 072	3 013	1.0%	-1.9%
<i>Animals</i>	1 582	1 640	1 557	3.7%	-5.1%
<i>Animal products</i>	1 459	1 432	1 456	-1.9%	1.7%
Agricultural services	235	224	236	-4.7%	5.1%
Secondary activities	380	385	386	1.2%	0.2%
<b>- Intermediate consumption</b>	<b>3 677</b>	<b>3 751</b>	<b>3 761</b>	<b>2.0%</b>	<b>0.3%</b>
<b>= Gross value added at basic prices</b>	<b>2 708</b>	<b>2 617</b>	<b>2 727</b>	<b>-3.4%</b>	<b>4.2%</b>
- Consumption of fixed capital	1 564	1 585	1 614	1.4%	1.8%
- Taxes	137	146	140	6.2%	-4.2%
+ Subsidies	1 276	1 242	1 230	-2.7%	-1.0%
<b>= Factor income</b>	<b>2 283</b>	<b>2 127</b>	<b>2 203</b>	<b>-6.8%</b>	<b>3.5%</b>
<b>Agricultural income* (2010=100)</b>	<b>100.5</b>	<b>94.7</b>	<b>99.8</b>	<b>-5.8%</b>	<b>5.4%</b>

(e) 2020 data are estimates and may still change.

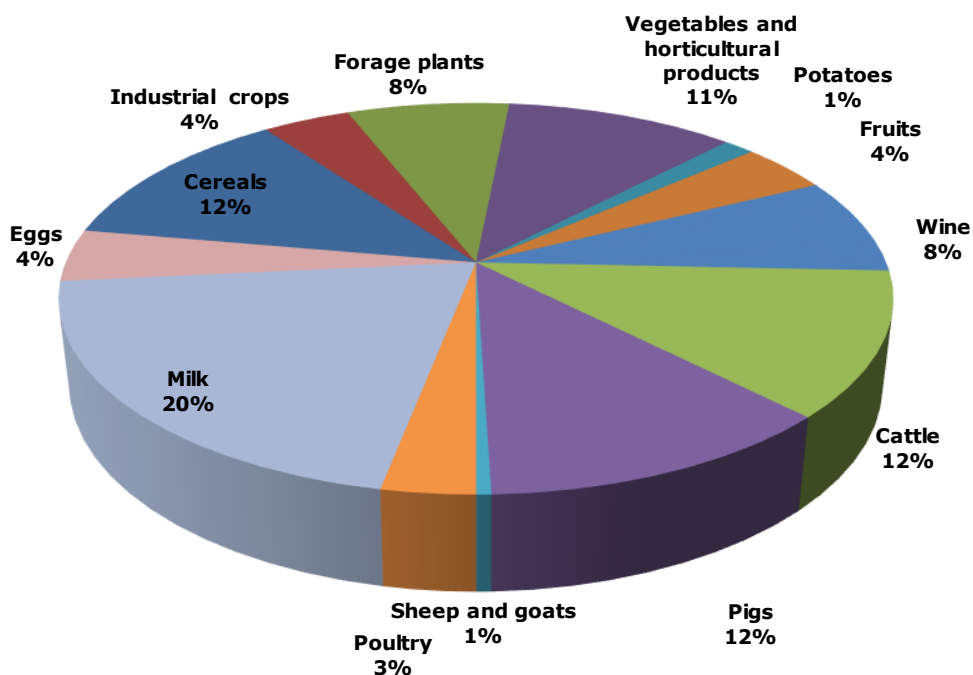
Updated: June 2021

Source: Eurostat(Online Data Table: aact\_eaa04 aact\_eaa06), Economic Accounts for Agriculture (Production value at basic price, Real Values, Index, 2010=100)

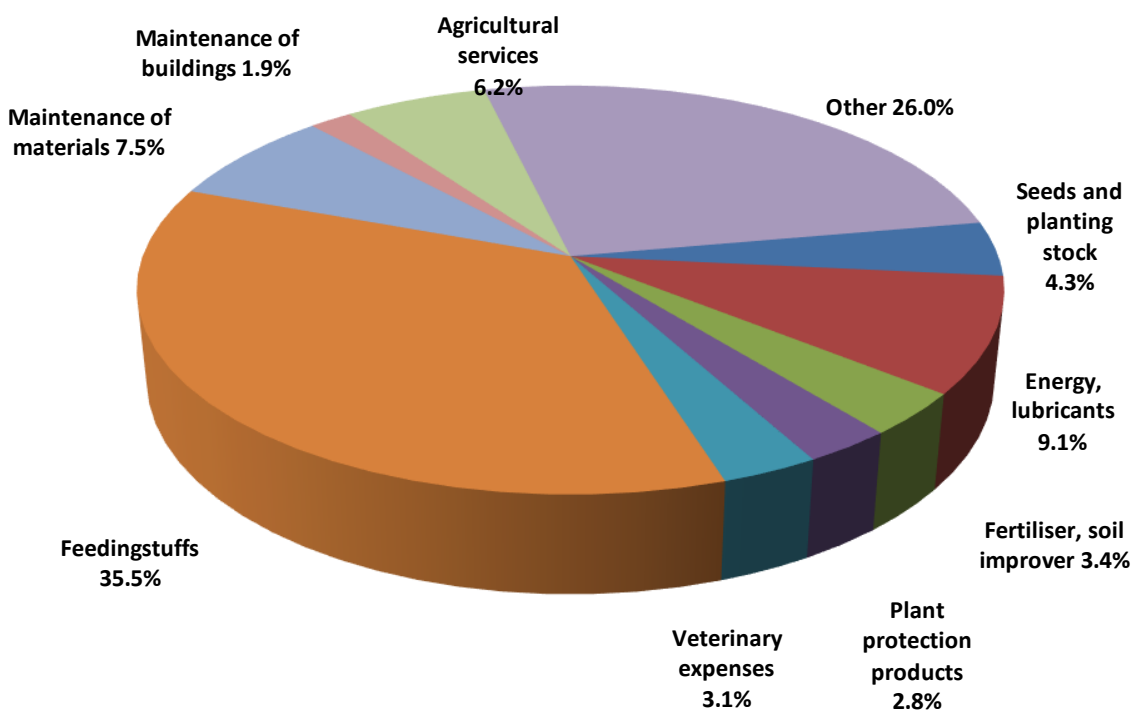


## 4.3. AGRICULTURE: ECONOMIC ACCOUNTS

### Output components (2018-2020 average)

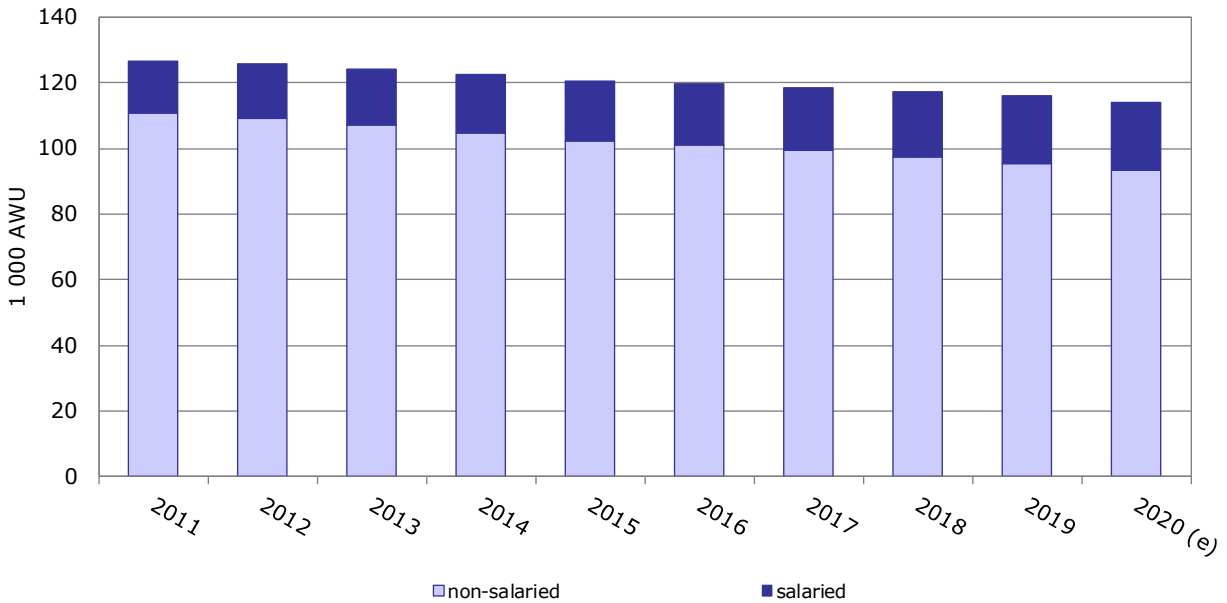


### Intermediate consumption (2018-2020 average)



Source: Eurostat (Online Data Table: aact\_eaa04) , Economic Accounts for Agriculture (values at real basic price)

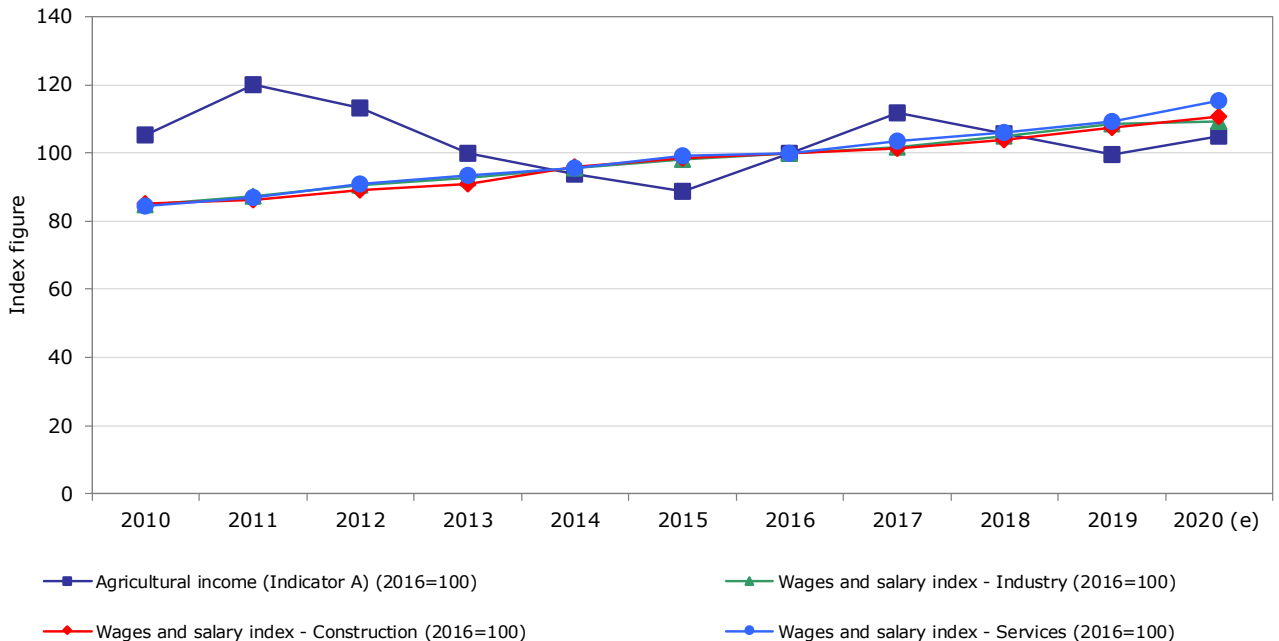
### Evolution of agricultural labour input



Source: Eurostat(Online Data Table: aact\_ali01)

Updated: June 2021

### Evolution of agricultural income (\*) compared to wages

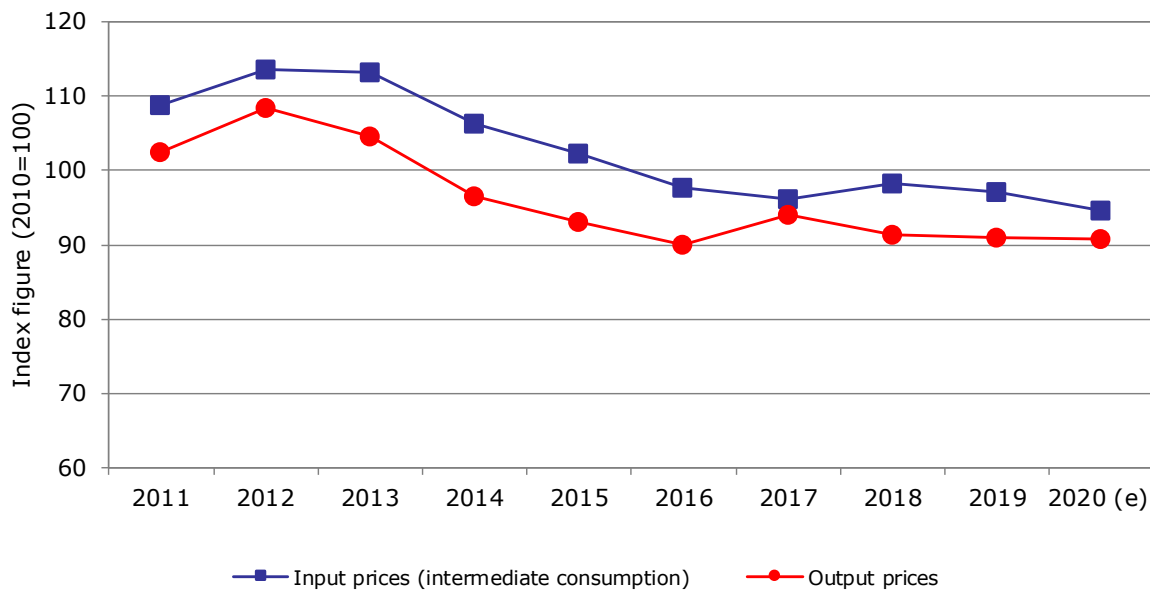


Source: Eurostat(Online Data Table: aact\_eaa06, lc\_lci\_r2\_a)

Updated: June 2021

(\*) The so-called indicator A is the real net value added at factor cost of agriculture per annual work unit (AWU). The net value added at factor cost (factor income) is calculated by subtracting the consumption of fixed capital from gross value added at basic prices and adding the value of subsidies less taxes. The AWU is defined as the work volume corresponding to one full-time employed worked.

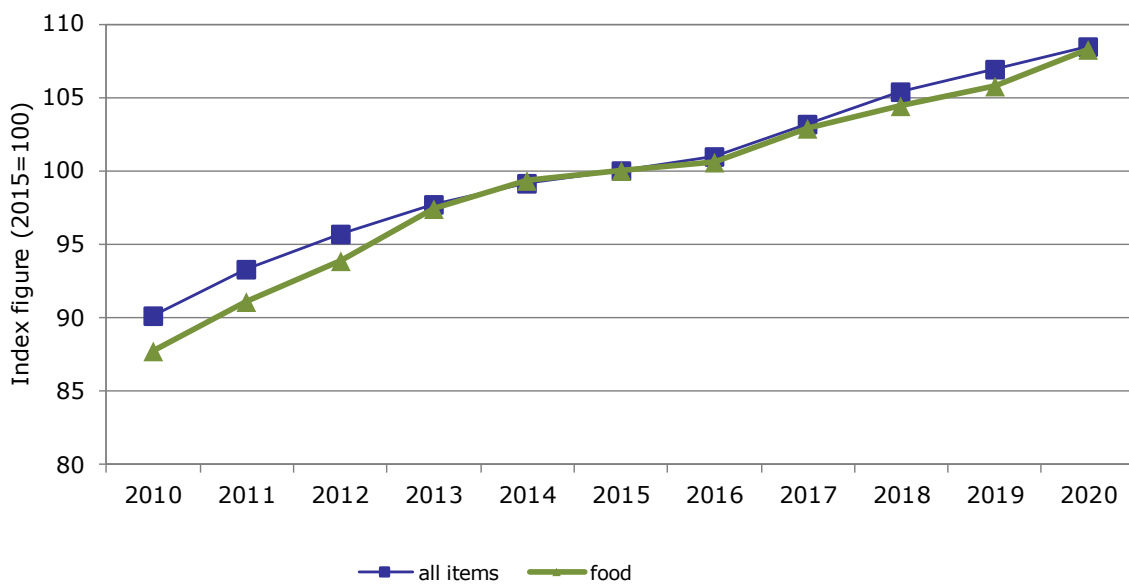
### Evolution of agricultural input and output prices



Source: Eurostat(Online data table: aact\_eaa05)

Updated: June 2021

### Evolution of harmonised indices of consumer prices

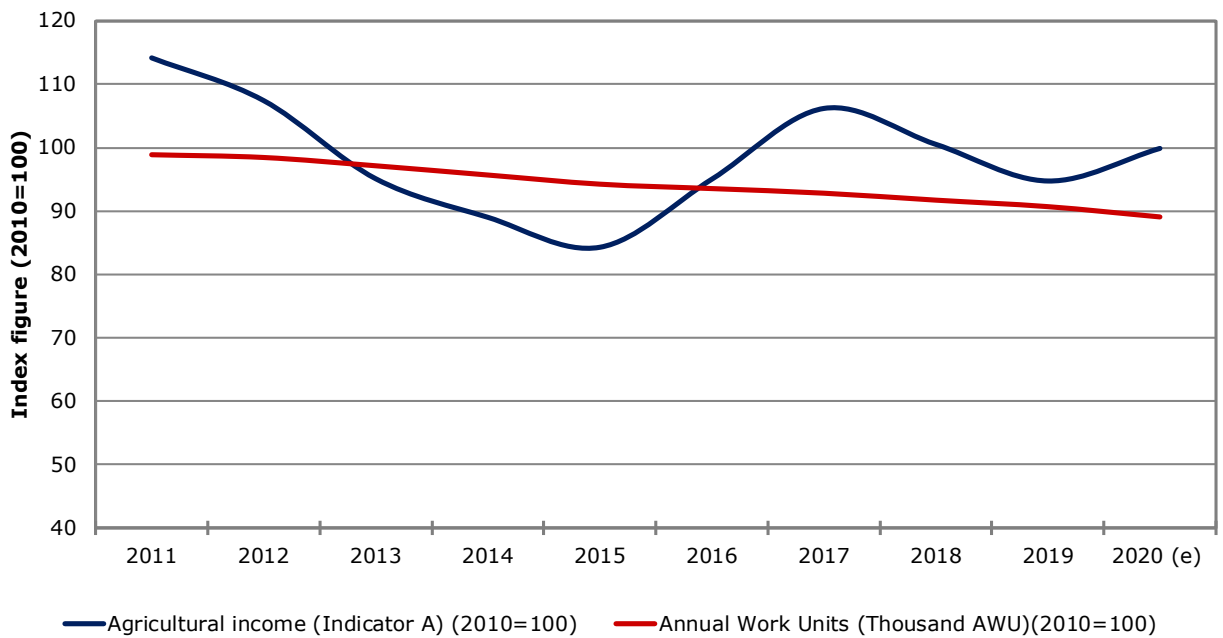


Source: Eurostat(Online Data Table: prc\_hicp\_aind)

Updated: June 2021

## 4.6. AGRICULTURE: ECONOMIC ACCOUNTS

### Farms' income and labour development index (real terms)

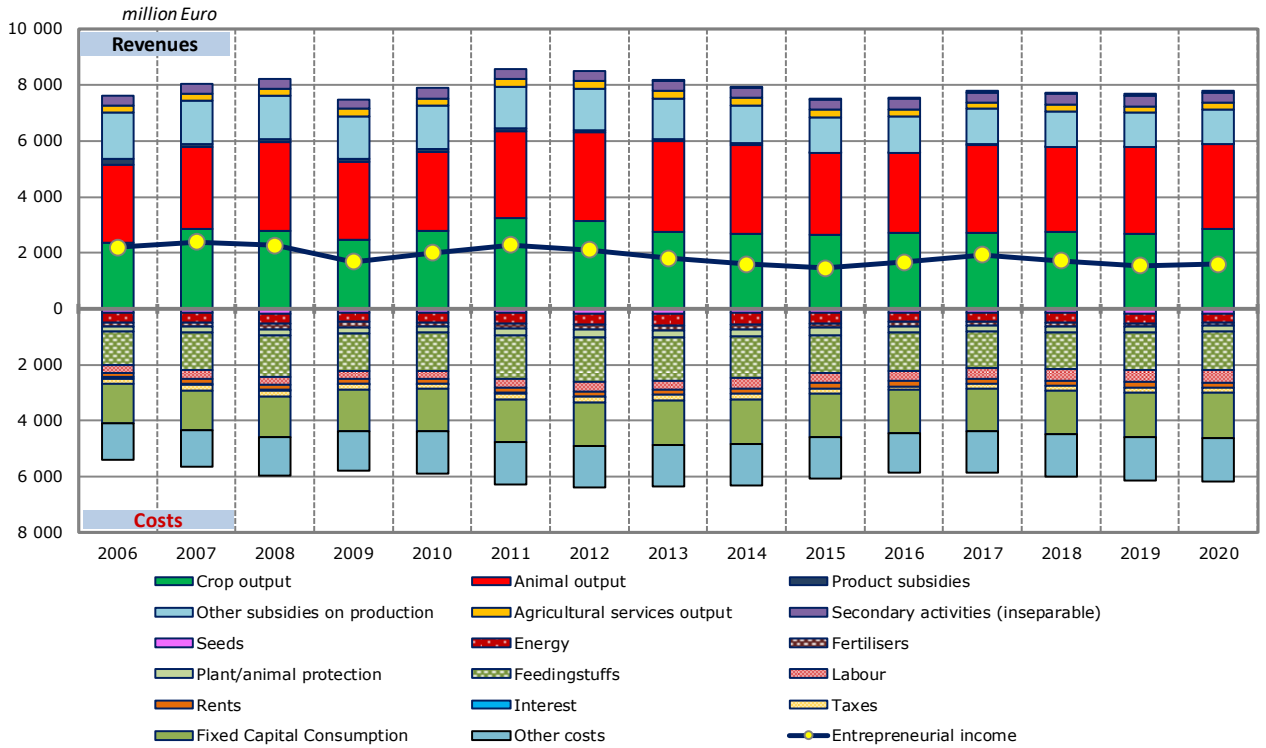


Source: Eurostat(Online Data Table: aact\_eaa06, aact\_ali01) and DG Agriculture and Rural Development

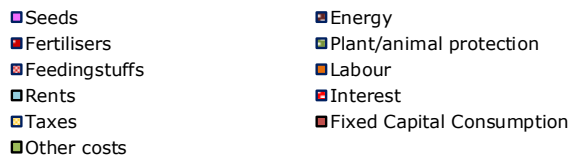
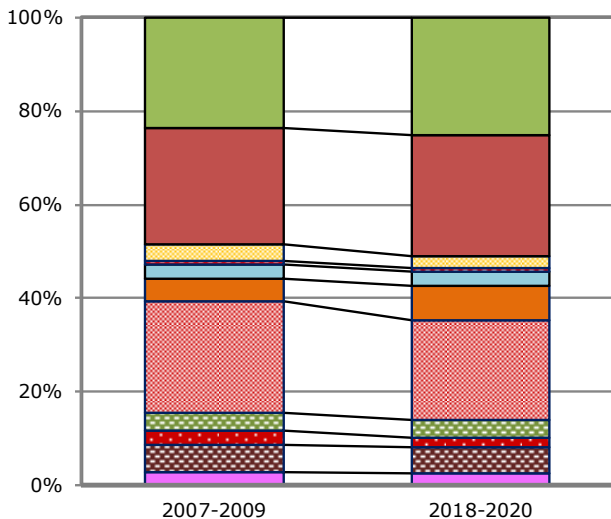
Updated: June 2021

## 4.7. AGRICULTURE: ECONOMIC ACCOUNTS

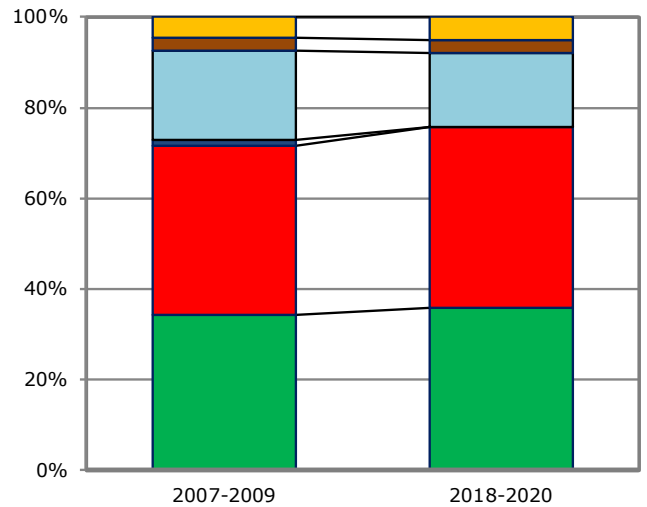
### Agricultural income (real prices)



#### Cost Structure



#### Revenue Structure



## 5.1. AGRICULTURAL TRADE

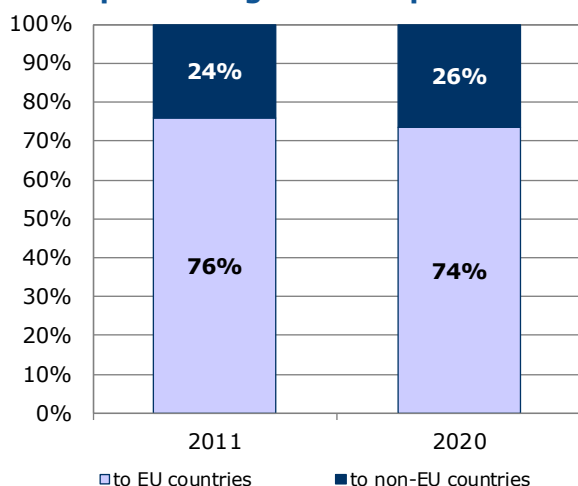
### Agricultural trade in 2020

By category of product	Total trade	Trade with EU countries		Trade with non-EU countries	
	Million EUR	Million EUR	% change 2020/2019	Million EUR	% change 2020/2019
<b>Exports</b>					
Commodities	1 832	1 461	9.2%	371	8.2%
Other primary products	2 498	2 097	-0.4%	401	13.7%
Processed products	2 189	1 834	3.9%	355	-0.9%
Food preparations	3 308	2 549	3.9%	759	10.1%
Beverages	3 114	1 523	3.8%	1 591	-2.9%
Non edible	525	446	7.5%	78	4.0%
<b>Total agricultural products</b>	<b>13 466</b>	<b>9 911</b>	<b>0.4%</b>	<b>3 555</b>	<b>-9.6%</b>
as % of total exports	9.1%	9.8%		7.7%	
<b>Imports</b>					
Commodities	2 331	2 134	11.0%	179	-15.4%
Other primary products	3 356	2 918	-6.0%	438	15.0%
Processed products	2 287	1 988	-2.6%	300	5.0%
Food preparations	3 071	2 736	1.1%	335	7.4%
Beverages	960	376	-5.6%	584	-8.8%
Non edible	1 107	1 036	2.2%	71	-3.6%
<b>Total agricultural products</b>	<b>13 112</b>	<b>11 189</b>	<b>0.0%</b>	<b>1 905</b>	<b>0.14%</b>
as % of total imports	8.7%	9.7%		5.5%	
<b>Balance</b>					
Commodities	- 498	- 673		192	
Other primary products	- 858	- 821		- 37	
Processed products	- 99	- 154		55	
Food preparations	237	- 187		424	
Beverages	2 154	1 147		1 007	
Non edible	- 583	- 590		7	
<b>Total agricultural products</b>	<b>353</b>	<b>-1 278</b>		<b>1 650</b>	

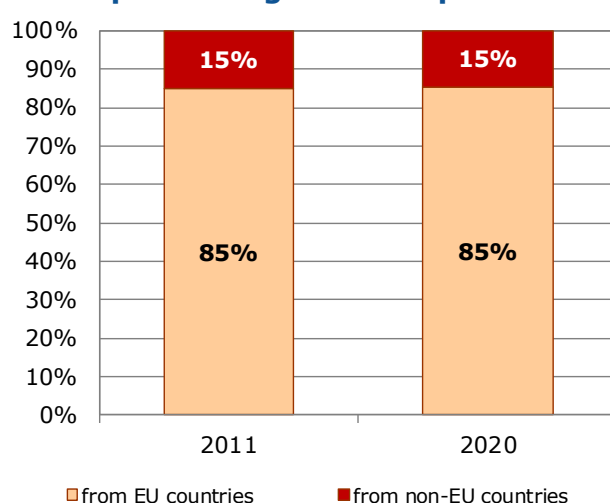
Source: Directorate General for Agriculture and Rural Development, based on COMEXT data

Updated: June 2021

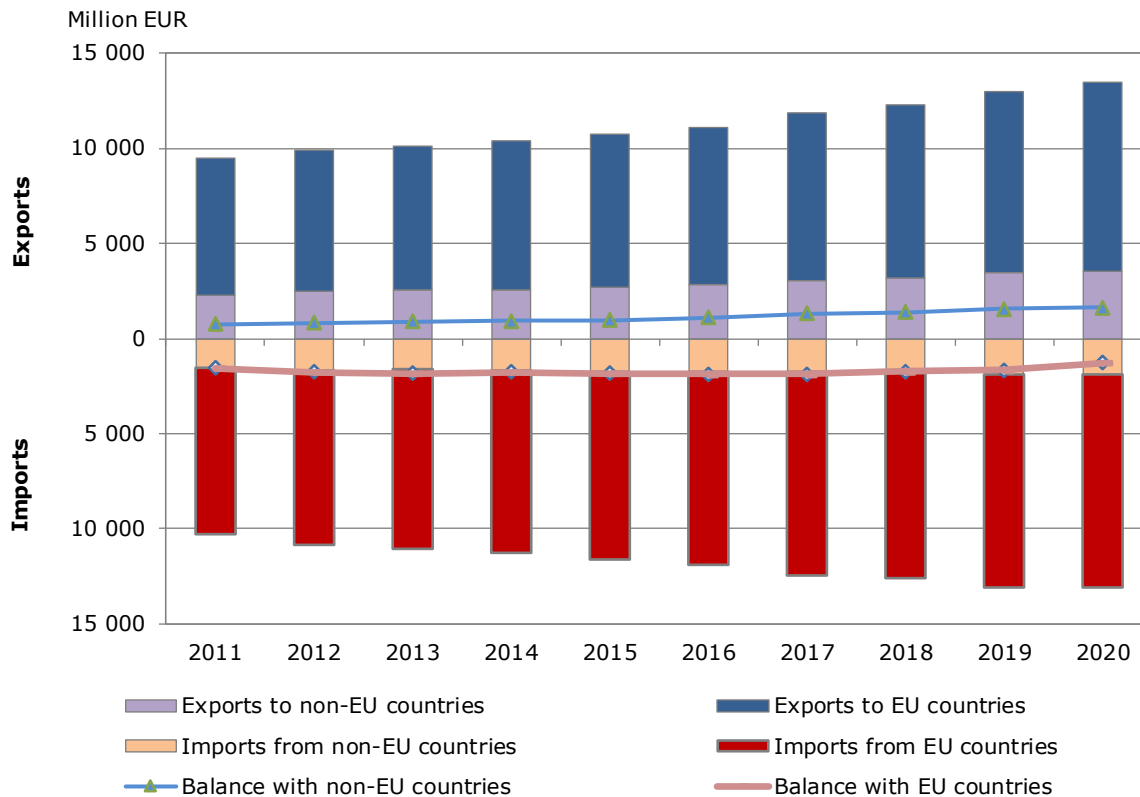
#### Exports of agricultural products



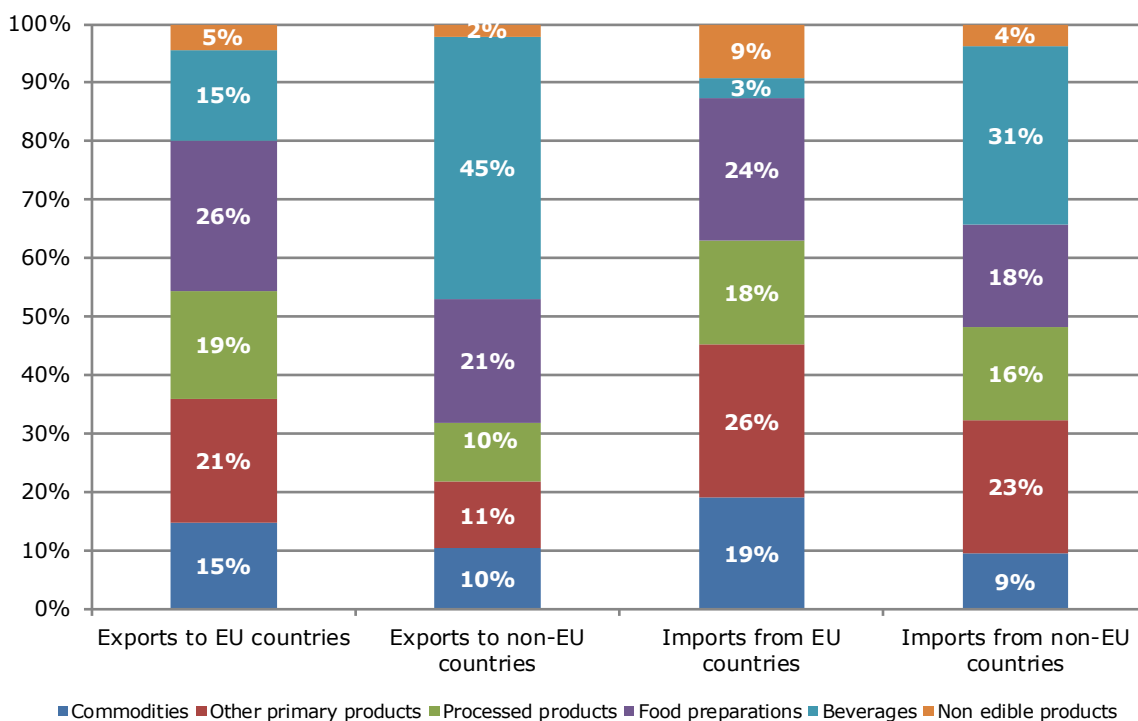
#### Imports of agricultural products



### Evolution of agricultural trade with EU and non-EU countries



### Structure of agricultural exports and imports



## 6.1. FARM STRUCTURE

### Structure of agricultural holdings

Holdings		2010		2016	
		Total	%	Total	%
By UAA (*)	< 5 ha	47 460	31.6%	41 100	31.0%
	5-10 ha	26 590	17.7%	22 040	16.6%
	10-20 ha	32 590	21.7%	27 470	20.7%
	20-30 ha	17 110	11.4%	15 110	11.4%
	30-50 ha	15 150	10.1%	15 520	11.7%
	50-100 ha	8 430	5.6%	8 520	6.4%
	> 100 ha	2 850	1.9%	2 730	2.1%
By economic size (**)	< 4 000 €	34 690	23.1%	25 750	19.4%
	< 8 000 €	20 320	13.5%	16 060	12.1%
	< 15 000 €	20 550	13.7%	18 200	13.7%
	< 25 000 €	16 940	11.3%	15 310	11.6%
	< 50 000 €	24 080	16.0%	20 600	15.5%
	< 100 000 €	19 220	12.8%	19 840	15.0%
	< 250 000 €	11 620	7.7%	13 990	10.6%
	< 500 000 €	2 280	1.5%	2 240	1.7%
=/> 500 000 €	460	0.3%	510	0.4%	
By LSU (***)	0	44 350	29.5%	39 390	29.7%
	0-5	29 540	19.7%	27 110	20.5%
	5-10	16 800	11.2%	13 720	10.4%
	10-15	12 520	8.3%	10 510	7.9%
	15-20	9 610	6.4%	7 430	5.6%
	20-50	25 690	17.1%	22 400	16.9%
	50-100	7 710	5.1%	7 730	5.8%
	100-500	3 880	2.6%	4 080	3.1%
	> 500	60	0.0%	120	0.1%
By age of holder	< 35 years	16 110	10.7%	16 130	12.2%
	35-44 years	41 060	27.3%	29 400	22.2%
	45-54 years	53 640	35.7%	45 940	34.7%
	55-64 years	26 980	18.0%	28 930	21.8%
	> 64 years	12 380	8.2%	9 650	7.3%
	not applicable	:	:	2 450	1.8%
<b>Total</b>	<b>150 170</b>	<b>100%</b>	<b>132 500</b>	<b>100%</b>	
UAA in 1 000 ha	2 878		2 670		
UAA (ha) per holding	19.2		20		

Source: Eurostat (Online Data Table: ef\_m\_farmleg), Farm Structure Survey

Updated: June 2021

(\*) UAA = Utilised agricultural area.

(\*\*) Economic size: The standard output of an agricultural product (crop or livestock), abbreviated as SO, is the average monetary value of the agricultural output at farm-gate price, in euro per hectare or per head of livestock. There is a regional SO coefficient for each product, as an average value over a reference period (5 years, except for the SO 2004 coefficient calculated using the average of 3 years). The sum of all the SO per hectare of crop and per head of livestock in a farm is a measure of its overall [economic size](#), expressed in euro.

(\*\*\*) LSU = Livestock units. A LSU is equivalent to a dairy cow. The number of animals (heads) is converted into LSU using a set of coefficients reflecting the feed requirements of the different animal categories.



## 6.2. FARM STRUCTURE

### Structure of farm labour force

2016			
Family labour force		Non family labour force	
persons:	292 420	Data not available	
of which women:	40.2%		
AWUs (*):	83 280	AWUs:	15 250
Holders	Family members	Regular non family labour force	Non regular non family labour force
persons:	persons:	persons:	Data not available
127 300	165 120	26 420	
of which women:	of which women:	of which women:	
29.2%	48.8%	36.7%	
AWUs:	AWUs:	AWUs:	AWUs:
56 560	26 720	15 250	3 200
<b>Total farm labour force (persons)</b>		318 840	
<b>Total farm labour force (AWUs)</b>		:	

Source: Eurostat(Online Data Table: ef\_lf\_main), Farm Structure Survey

Updated: June 2021

\* AWUs = Annual work units. An AWU is equivalent to a worker employed on a full time basis for one year.

## 6.3. FARM STRUCTURE

### Structure of farm livestock

#### Livestock and holdings with livestock in 2016

	Livestock unit (LSU)	Head (animal)	Thousand heads (animals)	Holding*	Percent structure	
					Livestock unit (LSU)	Holding*
<b>Livestock</b>	<b>2 432 030</b>	<b>:</b>	<b>:</b>	<b>93 920</b>	<b>100%</b>	<b>100%</b>
Live horses, asses, mules and hinnies	69 780	87 230	:	15 850	3%	17%
Live bovine animals	1 374 350	1 932 660	:	59 970	57%	64%
Live swine	699 400	2 883 860	:	26 340	29%	28%
Live sheep	39 850	398 540	:	13 760	2%	15%
Live goats	9 110	91 110	:	8 410	0%	9%
Live poultry	239 540	:	17 430	52 700	10%	56%
Rabbits, breeding females	:	:	:	:	:	:
Bees (hives)	:	:	:	:	:	:
Other animals	:	:	:	2 260	:	2%

\*note that holdings can keep various animals at the same time so the number of holdings with "Livestock" is less than the sum of groups of holdings with particular animals

#### Number of holdings with livestock herds by size class of livestock units, in 2016

ANIMALS/holdings*	Less than 5 LSU	From 5 to 9.9 LSU	From 10 to 14.9 LSU	From 15 to 19.9 LSU	From 20 to 49.9 LSU	From 50 to 99.9 LSU	From 100 to 499.9 LSU	500 LSU or over
<b>Livestock</b>	<b>27 110</b>	<b>13 720</b>	<b>10 510</b>	<b>7 430</b>	<b>22 400</b>	<b>7 730</b>	<b>4 080</b>	<b>120</b>
Live horses, asses, mules and hinnies	5 280	2 890	1 880	1 370	3 310	870	250	10
Live bovine animals	6 000	10 840	9 360	6 470	20 450	5 760	1 070	10
Live swine	3 060	3 040	2 760	2 300	8 440	3 660	3 040	50
Live sheep	6 680	2 180	1 540	700	1 960	520	160	:
Live goats	2 680	1 260	1 100	640	2 030	560	140	:
Live poultry	17 290	7 000	6 170	4 220	12 550	3 800	1 580	90
Rabbits, breeding females	:	:	:	:	:	:	:	:

\*note that holdings can keep various animals at the same time so the number of holdings with "Livestock" is less than the sum of groups of holdings with particular animals

#### Number of livestock units in livestock herds by size classes of livestock units, in 2016

ANIMALS/LSU	Less than 5 LSU	From 5 to 9.9 LSU	From 10 to 14.9 LSU	From 15 to 19.9 LSU	From 20 to 49.9 LSU	From 50 to 99.9 LSU	From 100 to 499.9 LSU	500 LSU or over
<b>Livestock</b>	<b>51 530</b>	<b>101 180</b>	<b>129 470</b>	<b>128 340</b>	<b>708 860</b>	<b>530 640</b>	<b>674 550</b>	<b>107 480</b>
Live horses, asses, mules and hinnies	11 970	13 370	9 040	10 800	16 570	6 760	1 220	40
Live bovine animals	18 750	72 740	105 100	104 400	607 080	355 560	109 930	790
Live swine	3 290	4 500	6 100	6 050	54 120	136 600	461 150	27 590
Live sheep	10 700	7 200	4 910	3 390	9 480	2 780	1 380	:
Live goats	1 840	1 080	1 110	1 080	2 810	870	310	:
Live poultry	4 970	2 280	3 210	2 610	18 800	28 070	100 570	79 030
Rabbits, breeding females	:	:	:	:	:	:	:	:

Source: Eurostat online data tables ef\_m\_farmleg, ef\_lsk\_main.

Updated: September 2021

The data extracted in June and September 2021, for the most recent data see sources

This document does not necessarily represent the official views of the European Commission  
© European Union, 2020 - Reproduction authorised provided the source is acknowledged

Contact: DG Agriculture and Rural Development, Farm Economics Unit

Tel: +32-2-29 75471 / E-mail: [Agri-C3@ec.europa.eu](mailto:Agri-C3@ec.europa.eu)