



Outcomes of the Stakeholder Round Tables on the Green Architecture of the CAP

Alberto Arroyo Schnell, IUCN

Zélie Peppiette, DG AGRI



What is your vision of environmentally sustainable agriculture?

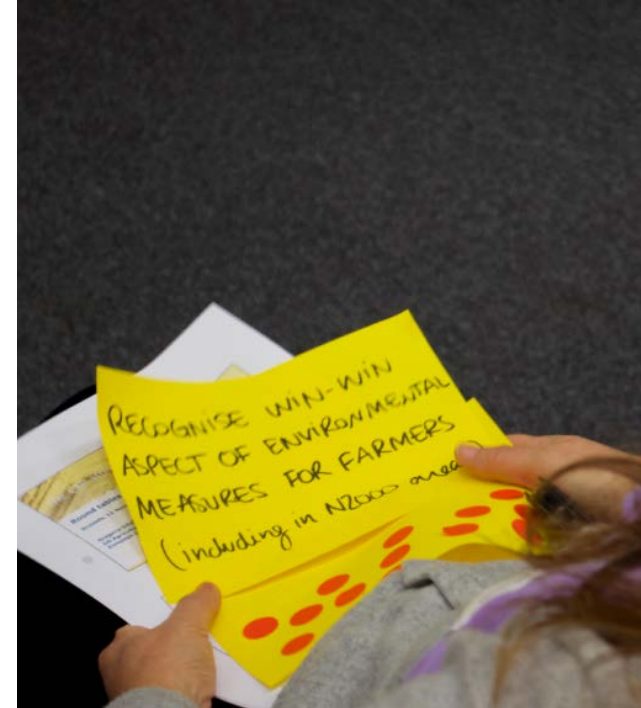


What was the purpose?

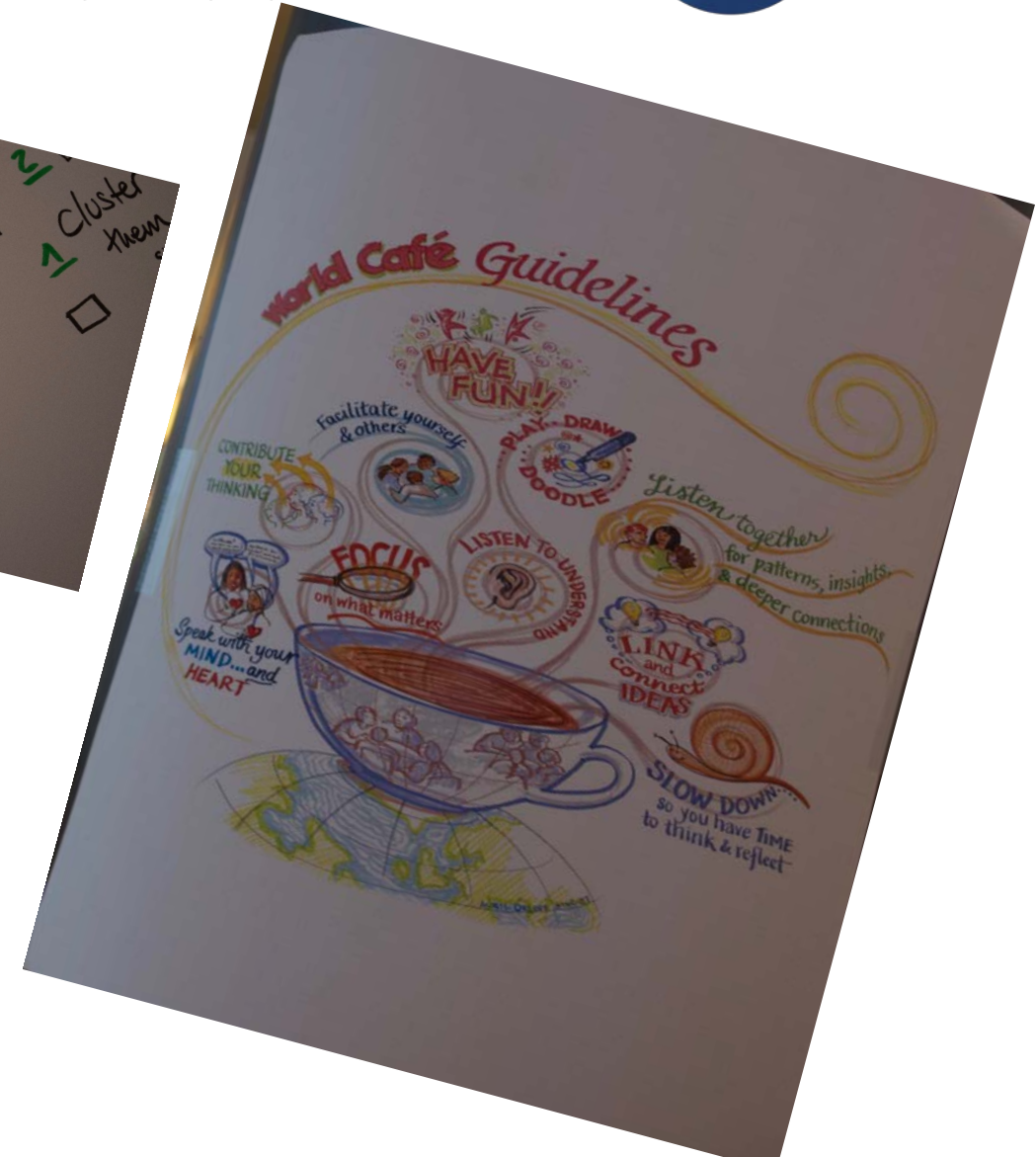


- agricultural and environmental stakeholders together
- exploring the potential to support both environmental objectives and sustainable farming.
- No endorsement!



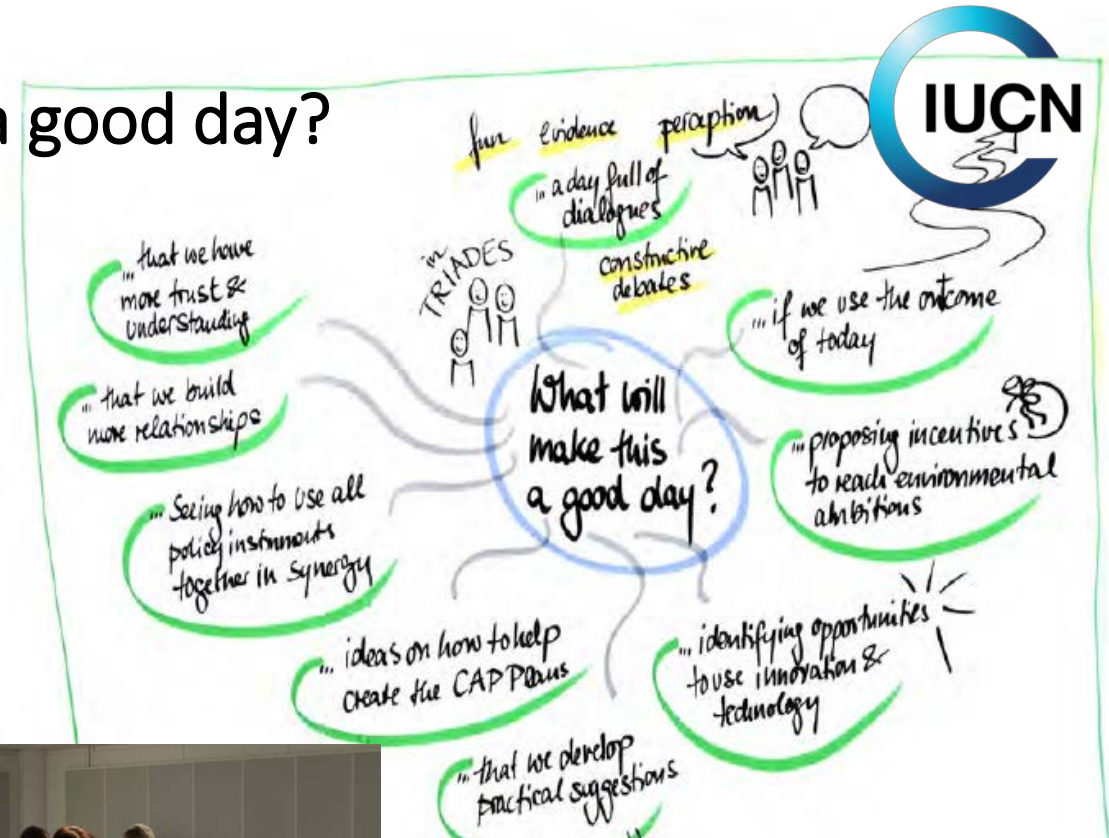


What is a participatory approach



What would make this a good day?

- "If participants feel it is a start of an improved dialogue which they would like to continue and which will be facilitated."
- "If practical suggestions are discussed and considered seriously by EU level and Member States Agriculture Ministers and policy makers."



Topics chosen for "Experimenting with CAP Green Architecture"

RECOGNISE WIN-WIN
ASPECT OF ENVIRONMENTAL
MEASURES FOR FARMERS
incl. in N2000 areas

SUPPORT SUSTAINABLE
GRASSLAND MANAGEMENT
HNV + MARGINS + AGRO ECOLOGY
Conditions
Huge diversity across Europe
clear objective
Eco schemes

IMPROVING
SOIL QUALITY
THROUGH
MEASURES
SHR & GAEC impact on soil qualities
Coupled payments
Modul-System

Eco schemes & ecoenviron-ment develop certification labels
SUSTAINABILITY INDICATORS AVAILABLE FOR CONSUMERS
What do consumers want?
Carbon Biodiversity
Commonality on definitions

Scheme- member-ships
DEVELOP NICHE / LOCAL PRODUCTS WITH SPECIFIC VALUE
for the farmer
(SlowFood)
Connection points with Eco-schemes

more open & limited budget
LAND ELIGIBILITY, FEAR OF SANCTION, COOPERATION BETWEEN FARMERS
diversity on local level
((Satellite alerts)) for farmers
What is the architecture? how strong? realize? Need

Apps new indicators
ASSESS RESULTS OF MANAGEMENT WITH BIODIVERSITY MONITORING & ECOLOGICAL ADVICE
Common Definitions

incumbent sustainable farmers
IMPLEMENT PAYMENTS FOR ECOSYSTEM SERVICES
focus on Pillar I to recognize farmers

better implementation beneficiaries coherence with others
AKIS STRATEGY
Skills farmers rural develop

Working on landscape-level
INNOVATION IS NOT ONLY TECHNOLOGICAL IT CAN BE A PARTICIPATORY PROCESS TO DEVELOP INNOVATION
farmer to farmer knowledge
Solving environmental problems
Cooperator farmer groups
21 who know the data



An example: support for sustainable grassland and HNV

Adaptable practices linked to ecosystem condition: (grazing, mowing, input levels)

Maintain/enhance Quantity

- Conditionality
 - Maintenance of carbon stock, including on wetland/peatland pastures
 - Protection of habitats and species
- Eco-schemes
 - Incentives for additional landscape features
 - Focus on extensive semi-natural systems

Deliver Quality

- AEEM
 - Results-based payments
 - Higher level commitments

Supporting Measures

- Non-productive investments
- AKIS
- ANC

Plus:

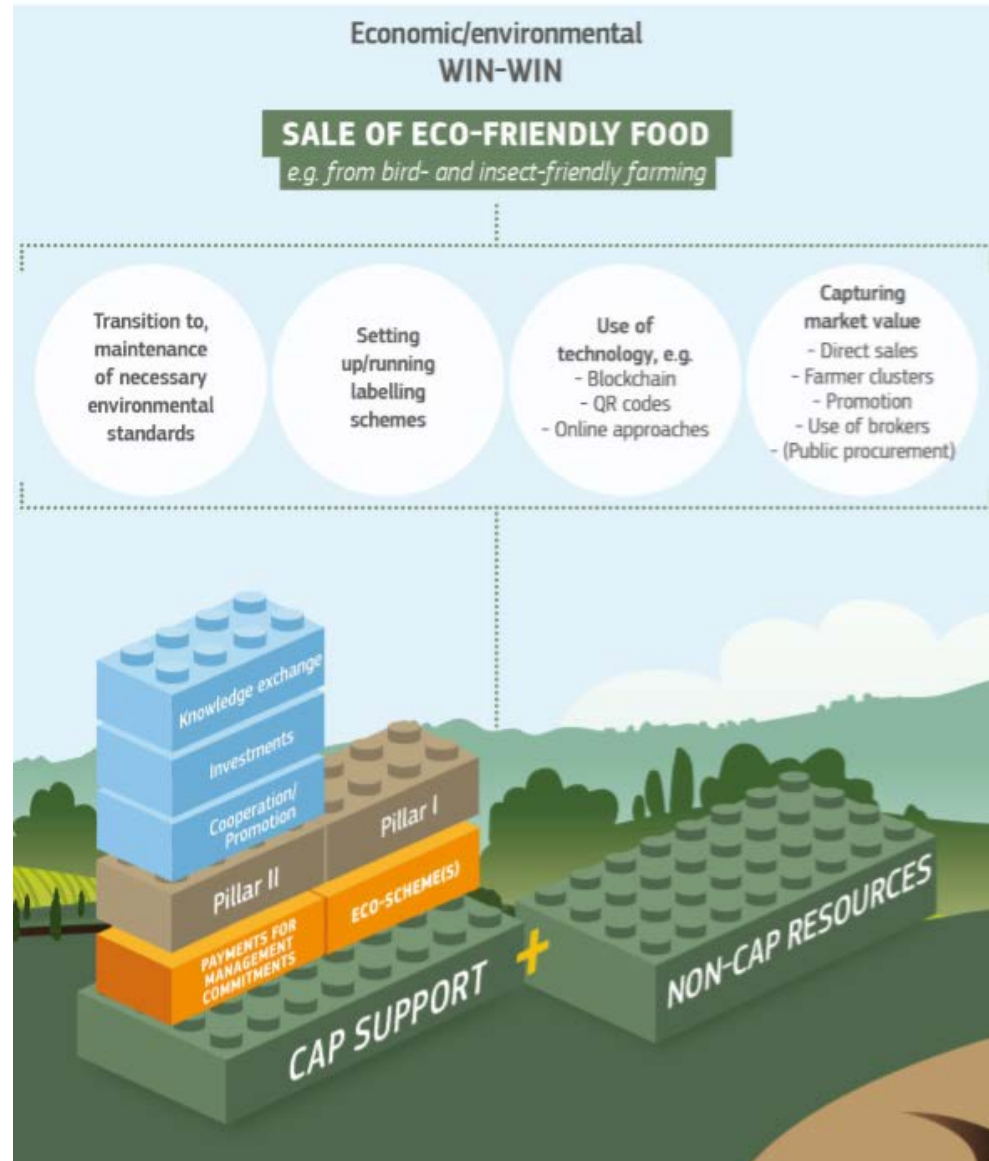
- Labelling linked to env quality; consumer education
- Landscape approach, use of technology
- Partnership





THE POST-2020 COMMON AGRICULTURAL POLICY: ENVIRONMENTAL BENEFITS AND SIMPLIFICATION

“REFLECTIONS FROM THE GROUND”



Some conclusions

- **BEYOND USEFUL: NECESSARY!**
- **The following conditions are crucial**
 - **TRUSTed** environment
 - Well **FACILITATED** discussion
 - Potential **USE IN THE POLICY DEBATE**
- **This needs to continue**
 - **And that is the plan**





Further information



- Round tables on Europa website:

https://ec.europa.eu/info/events/round-tables-green-architecture-cap-2018-nov-12_en

- Brochure on CAP Green Architecture

https://ec.europa.eu/info/sites/info/files/food-farming-fisheries/key_policies/documents/cap-post-2020-environ-benefits-simplification.pdf





Thank you!

