

Update on the EU school scheme



**Civil Dialogue Group
Horticulture Sector, Fruit and vegetables
8/4/2022**

[Art.4.1 (b) - privacy]

AGRI.E.3 – Animal Products

Updates on

1. **Implementation** of the EU school scheme
 - Adjustments and derogations to its **rules**
 - Decision fixing **EU aid** for 2022/23 and adjusting aid for 2021/2022
 - Highlights from the Member States **monitoring reports** for **2020/2021**
2. **Review** of the EU school scheme planned for 2023 (Farm to Fork)
 - Ongoing **evaluation**
 - Upcoming **public consultation**

1.1 Adjustments and derogations to EU school scheme rules

- Commission delegated regulation (EU) 2022/245 of 13/12/2021
 - **All children** participating in the EU school scheme to take part in **educational measures**
 - Application of **public procurement rules** recalled and conditions for **approval of aid applicants** adjusted
- Commission implementing regulation (EU) 2022/246 of 13/12/2021
 - Rules on aid applications and payments adjusted to use of **simplified costs** options (price of product and proof of payment not relevant)
 - List of verifications under the **on-the-spot checks** supplemented - namely on educational measures





1.1 Adjustments and derogations to EU school scheme rules

- Commission implementing regulation [\(EU\) 2022/526](#) of 1/4/2021
 - COVID-19 restrictions make it difficult to carry out on-the-spot checks: closure of schools or limits to accessing their premises
 - In 2021/2022 school year, Member States may continue carrying out those checks **remotely** (e.g. via videoconference)

Links to EU school scheme regulations ⇒ [School scheme explained | European Commission europa.eu](#)), section Legal bases

Legal bases

The following regulations set out the EU school fruit, vegetables and milk scheme (please refer to the consolidated version of each regulation):

- [EU Regulation 1308/2013](#) , Articles 22 to 25 and Annex V;
- [EU Regulation 1307/2013](#) , Article 5 and Annex I;
- [EU Implementing Regulation 2017/39](#) , with rules for uniform implementation of the scheme;
- [EU Delegated Regulation 2017/40](#) , with additional specific rules for the implementation of the scheme.

1.2 Commission decision fixing EU aid 2022/493 of 21 March 2022



EU aid for school fruit/vegetables in 2022/2023 ⇒ EUR 125,6 million

- Less than indicative allocation of EUR **130,6 million**: transfer to school milk by FR (EUR 4,4 million) and SE (EUR 0,5 million)
- EUR **2,2** million unrequested by SE distributed to countries requesting more (all but BE, EL, FR, CY, PT, RO and FI)

Adjusted EU aid for school fruit/vegetables in 2020/2021 ⇒ EUR 126 million
(from EUR 125,6 million)

- transfer from school milk by NL (EUR 0,48 million) and DE (EUR 0,02 million)
- 0,17 million unrequested by BE distributed to 11 countries requesting more

1.3 Highlights from MS monitoring reports 2020/2021

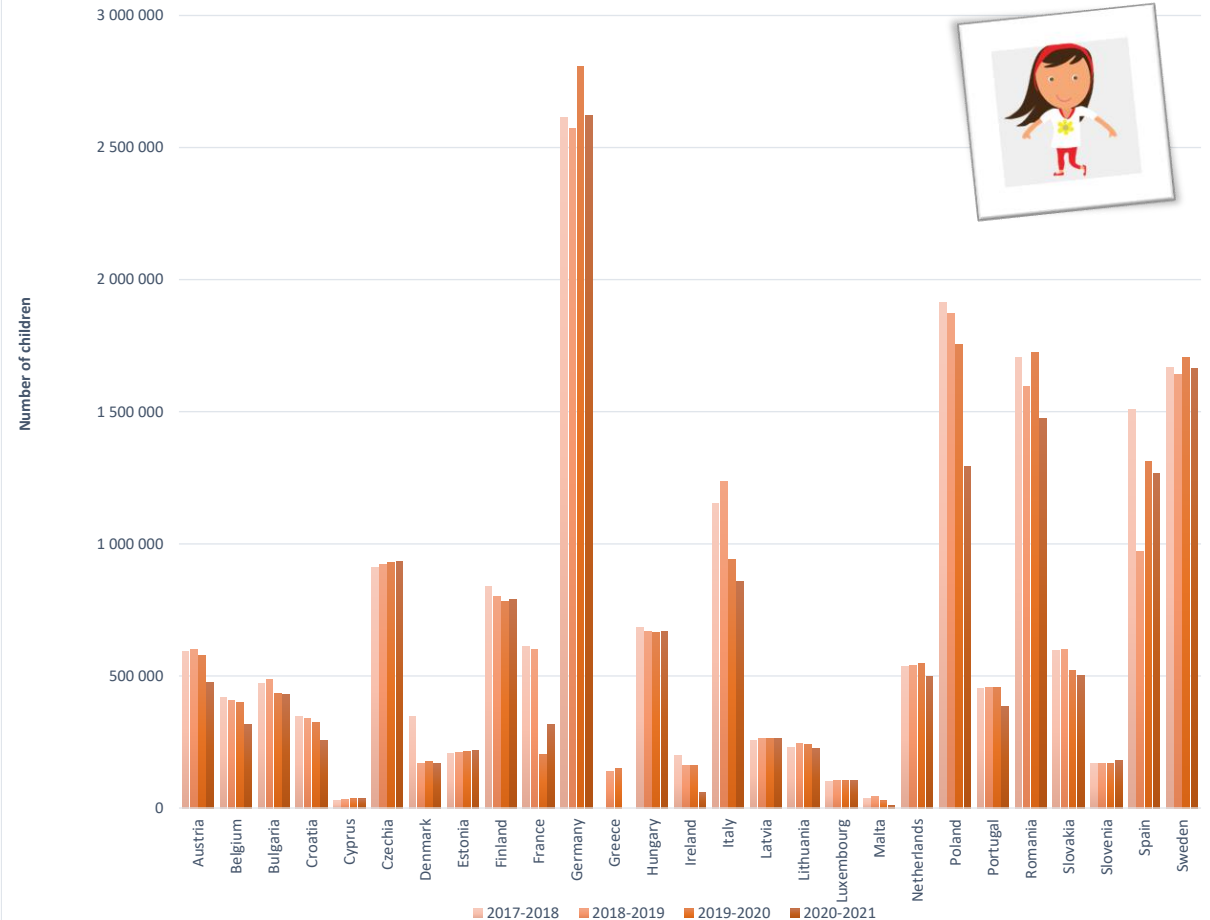
- 31/1/2022: monitoring report(s) by **27 countries** ⇒ **no longer UK**
No implementation in EL : issues on public procurements & Covid
- **Most reports** in EU school scheme webpage, country section: EU summary will follow (ongoing checks of quality and consistency of information)
- Figures at EU level in this presentation are **PRELIMINARY**
- **COVID-19** ⇒ **schools closures** and/or classes in **distance learning** and **health/sanitary** restrictions
- **COVID-19** impact on the **number of participating children** ⇒ around **16 million** in 2020/2021 less than in previous school years in EU 27

Number of children participating in the EU school scheme

	2017-2018	2018-2019	2019-2020	2020-2021
Austria	594 124	602 133	577 798	475 738
Belgium	420 089	407 920	397 733	316 228
Bulgaria	470 885	484 909	432 749	429 174
Croatia	346 874	340 531	324 356	255 254
Cyprus	28 870	33 314	35 115	35 273
Czechia	910 498	921 870	930 427	933 182
Denmark	346 941	169 311	177 298	167 630
Estonia	208 281	211 985	212 813	217 162
Finland	839 893	799 232	779 708	790 092
France	613 070	598 837	203 708	316 655
Germany	2 613 813	2 570 559	2 805 836	2 621 748
Greece		138 135	149 946	
Hungary	683 597	667 833	664 703	666 493
Ireland	198 213	161 062	161 816	59 106
Italy	1 153 990	1 236 664	940 959	858 283
Latvia	254 460	263 967	264 727	264 551
Lithuania	230 144	244 806	241 207	225 702
Luxembourg	101 401	103 503	104 702	106 093
Malta	38 174	44 822	27 678	9 059
Netherlands	535 870	538 386	546 470	497 751
Poland	1 914 944	1 871 472	1 755 083	1 292 356
Portugal	451 871	455 534	455 308	385 324
Romania	1 705 580	1 594 960	1 726 097	1 475 655
Slovakia	595 063	598 281	520 600	502 800
Slovenia	169 438	169 584	167 228	179 835
Spain	1 507 491	969 345	1 313 981	1 267 575
Sweden	1 666 237	1 641 983	1 704 209	1 665 595
Total EU 27	18 599 811	17 840 938	17 622 255	16 014 314
Total EU+UK	20 283 314	19 413 309	19 095 896	



Children participating in the EU school scheme

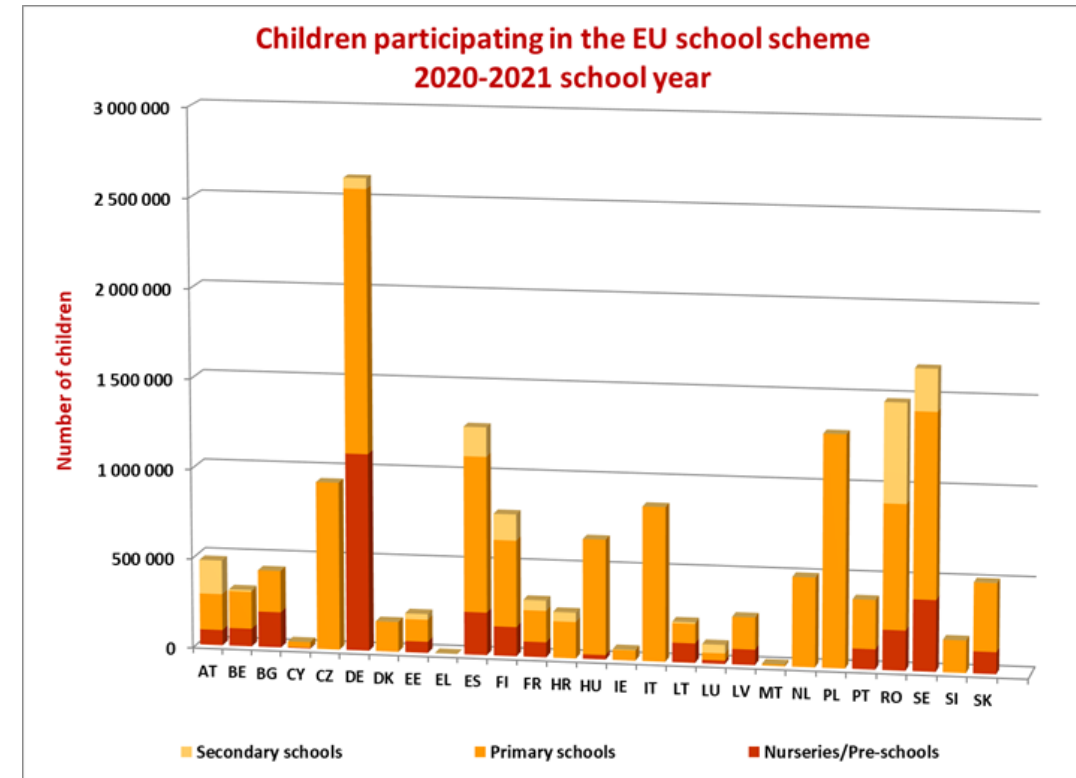


1.3 Highlights from MS monitoring reports 2020/2021

- Participating children ⇒ preliminary figures: around 16 million

	Number of children	% of total
Nurseries/Pre-schools	3 121 940	19
Primary schools	11 332 612	71
Secondary schools	1 559 762	10
Total	16 014 314	

In some countries, estimate as exact number not/not easily available.



1.3 Highlights from MS monitoring reports 2020/2021

- Impact of COVID-19 on **distribution of products**
 - *limited period* for distribution or smaller *number* of portions
 - changes in *format, types* (e.g. need for single packaging), *costs*
 - recourse to *home delivery* packages, *donations, flexibility* in distribution arrangements
 - *lower expenditure* (EU and/or national) and *quantities*

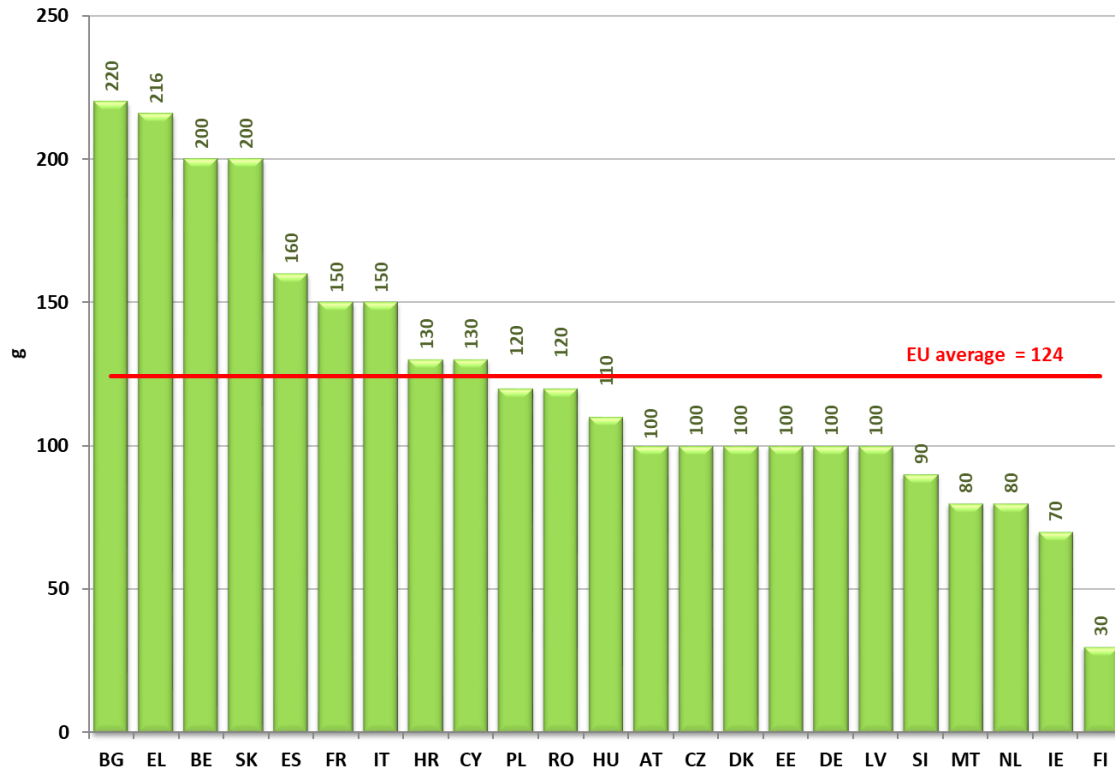


Quantities of supplied/distributed products

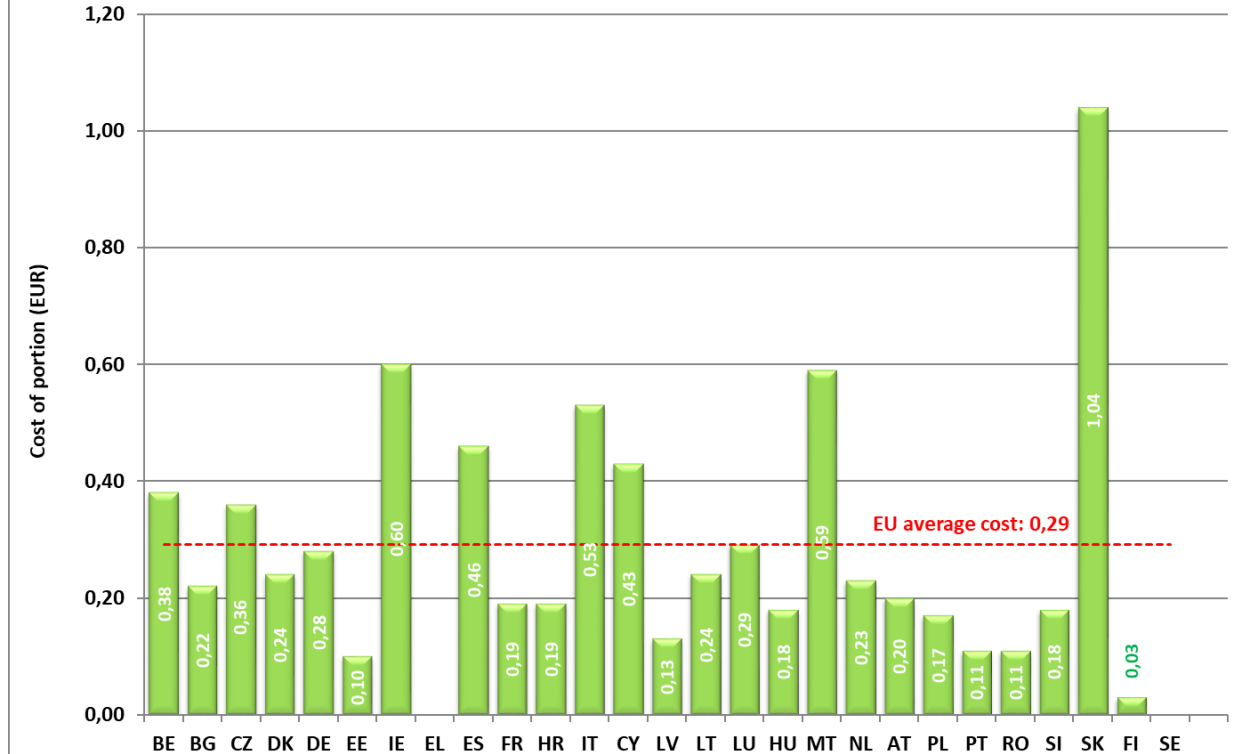
School fruit and vegetables		2017/2018	2018/2019	2019/2020	2020/2021*
Fresh fruit and vegetables	Quantity in kg	65 469 851	71 217 465	53 199 482	48 941 964
Processed fruit and vegetables	Quantity in kg	957 285	836 138	534 900	517 033
	Quantity in litres	5 867 381	5 189 412	5 392 865	5 774 882

1.3 Highlights from MS monitoring reports 2020/2021

Average size of school fruit and vegetables portion (grams)

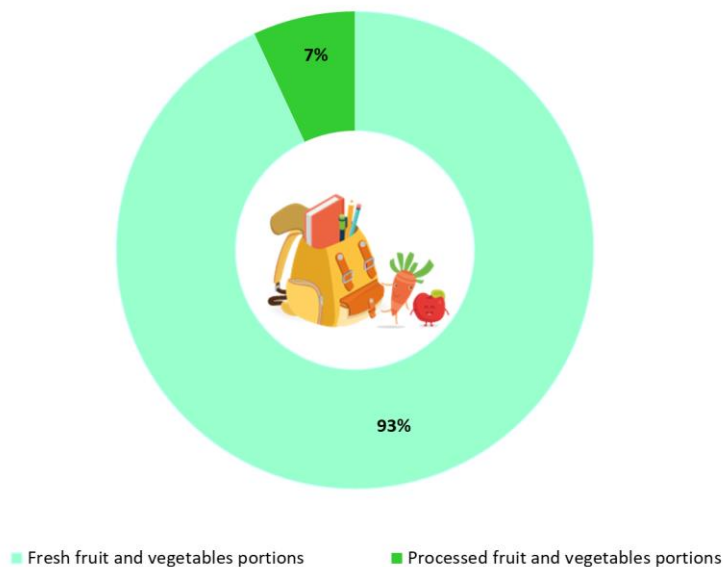


Average cost of school fruit and vegetables portion (EUR)



1.3 Highlights from MS monitoring reports 2020/21

Portions of fruit and vegetables distributed to schoolchildren



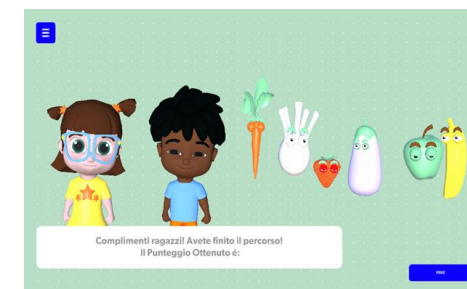
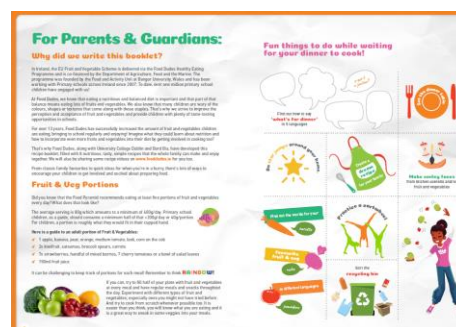
Fresh fruit and vegetables portions in % of total F&V portions



1.3 Highlights from MS monitoring reports 2020/2021

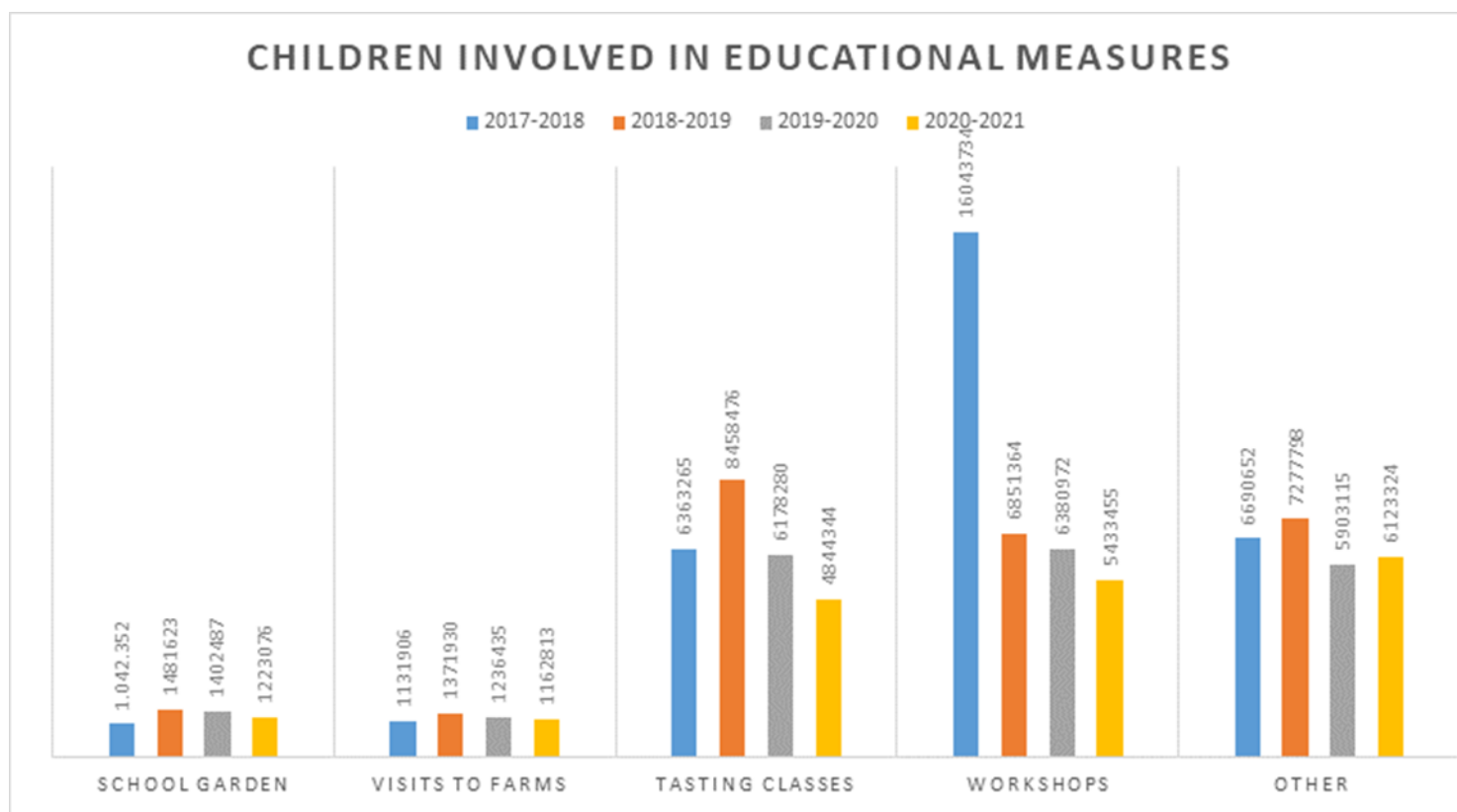
- Impact of **COVID-19** on educational measures
 - Some activities - farm visits or tasting classes – **not possible**
 - **Online activities** adapted to distance learning

Some examples: **LT** (translated FAO publications on food waste), **IE** (booklet with recipes), **IT** virtual farm visits/quiz ...

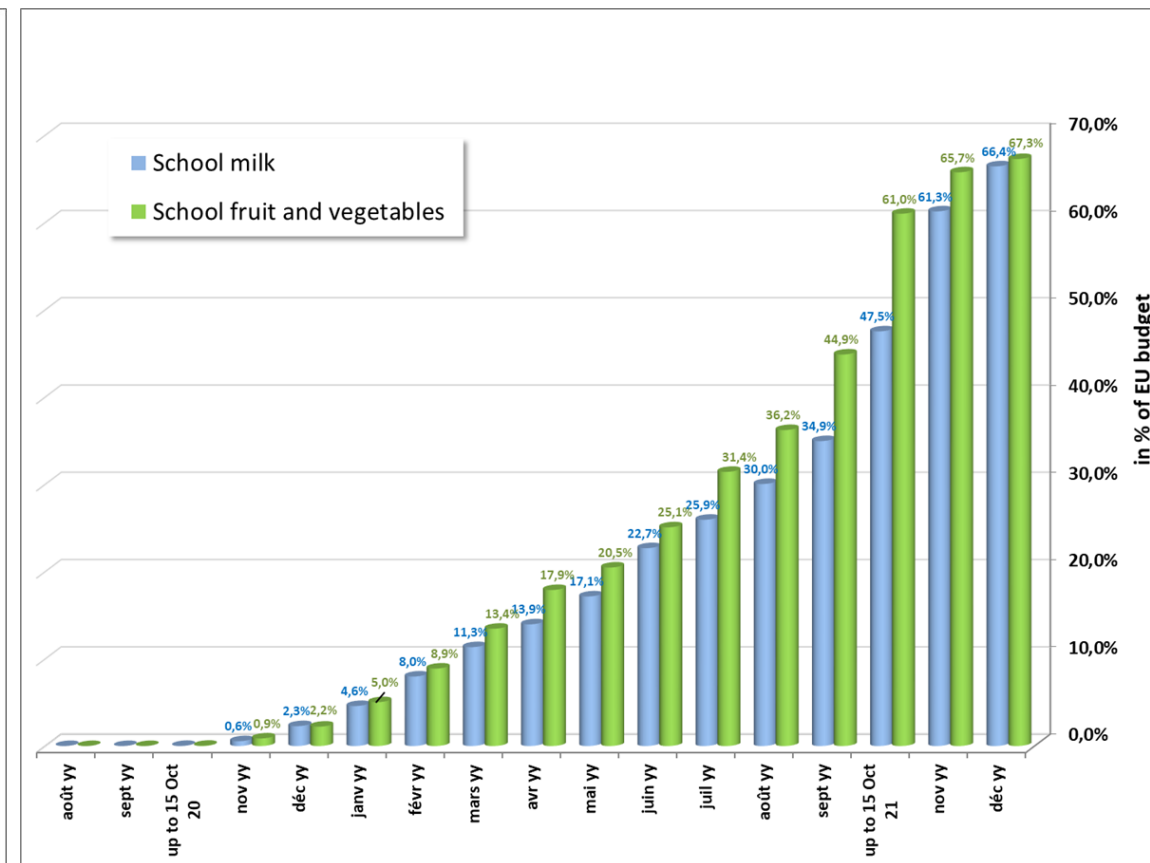
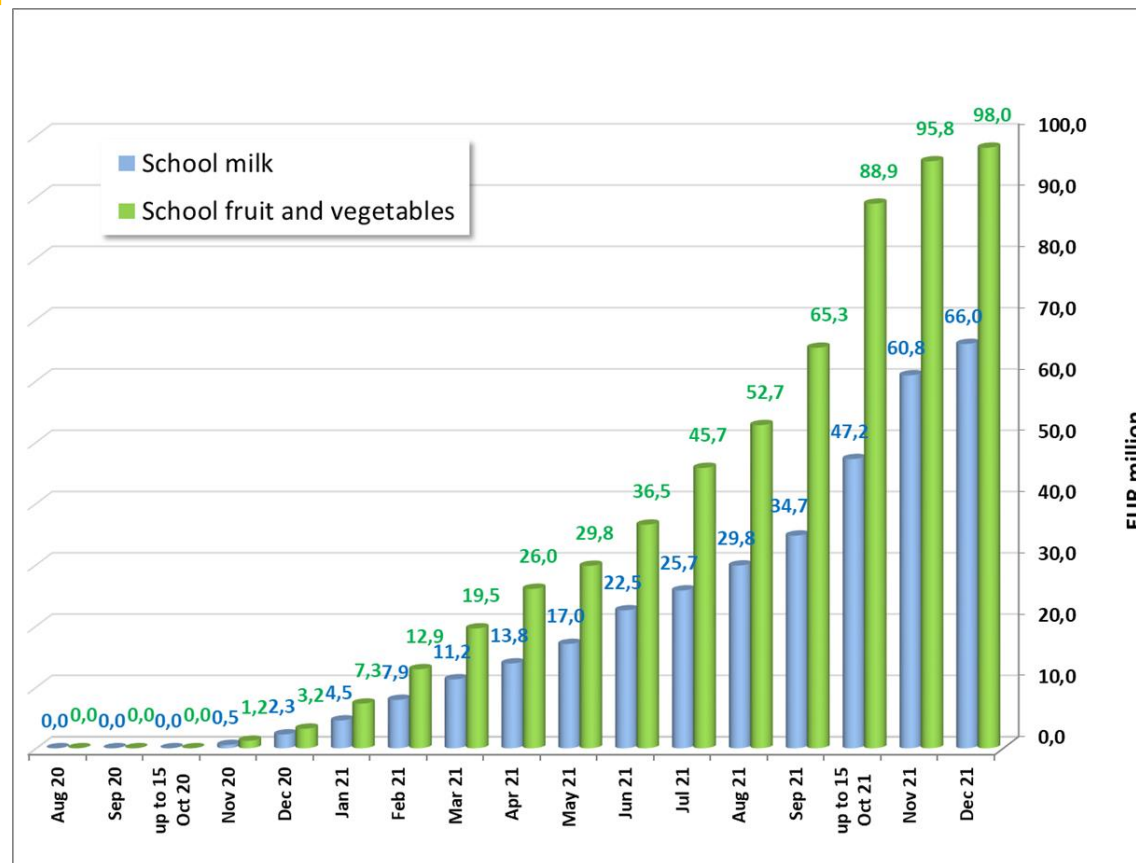


1.3 Highlights from MS monitoring reports 2020/2021

- Despite efforts, reduction in expenditure and number of children involved in educational measures



2020/2021 school year: financial execution, EU 27

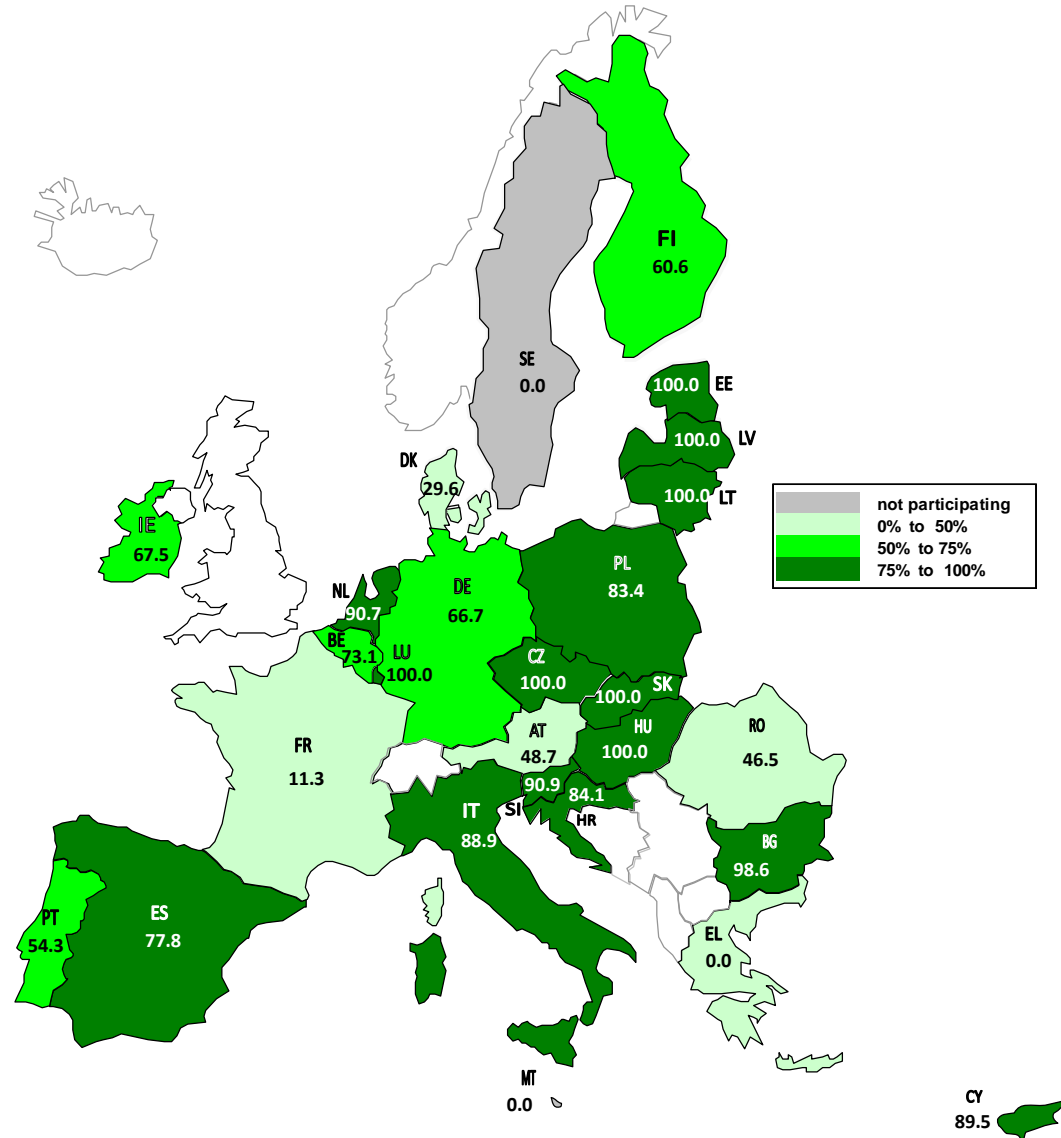


AGRI.E.3. Source: Member States' declarations of expenditure (up to 31/12/2021). Provisional figures: corrections possible.

EU school scheme: EU expenditure for school year 2020/2021

(1 August 2020 to 31 December 2021 - EU expenditure as % of definitive allocation)

School fruit and vegetables



6 countries ≤ 50 %

EL	0,0%
MT	0,0%
FR	11,3%
DK	29,6%
RO	46,5%
AT	48,7%

5 Countries > 50 % and ≤ 75%

PT	54,3%
FI	60,6%
DE	66,7%
IE	67,5%
BE	73,1%

EU average 67,2

15 countries > 75%

ES	77,8%
PL	83,4%
HR	84,1%
IT	88,9%
CY	89,5%
NL	90,7%
SI	90,9%
BG	98,6%
EE	100,0%
LT	100,0%
SK	100,0%
LV	100,0%
LU	100,0%
HU	100,0%
CZ	100,0%

2.1 Review of the EU school scheme: ongoing evaluation

- Assessment of the **performance** of the EU school scheme
 - Effectiveness
 - Efficiency
 - Relevance
 - Coherence
 - EU added value
- Evaluation support study by **external contractor** (Agrosynergie)
- Geographical scope: **EU 27 + UK**, with **10 national case studies** (CZ-DE-ES-IT-LT-NL-PL-PT-RO-SE)



2.1 Review of the scheme: ongoing evaluation

- Evaluation period: from **2017/2018** to **2020/2021** school year
- Evaluation tools include:
 - Questionnaire-based survey for **public authorities in EU-27**
 - **Family survey** in the MS selected for the case studies (> 4200 replies)
 - **Interviews** (151) with **stakeholders** in the MS selected for the **case studies**
- Finalisation: **End 2022**
- **Complementary** study on health, educational and sustainability aspects **upcoming**



2.2 Review of the EU school scheme: public consultation

- Questionnaire being translated in all EU languages ⇒ launch in **May**
- Open in **EU survey** for at least **12 weeks**
- Views on **performance of current** scheme and **design of new** scheme
- **General questions** for all + **additional questions** for specific target groups
 - schoolchildren and/or their parents/guardians;
 - schools and associations + organisations active in education on food, nutrition, health;
 - businesses and associations active in the agriculture and food sector;
 - NGOs
 - public authorities
- **Communication** to general public + **info to CDGs** on **launch survey**



Questions? Agri-school-scheme@ec.europa.eu

Thank you

© European Union 2020

Unless otherwise noted the reuse of this presentation is authorised under the [CC BY 4.0](https://creativecommons.org/licenses/by/4.0/) license. For any use or reproduction of elements that are not owned by the EU, permission may need to be sought directly from the respective right holders.