



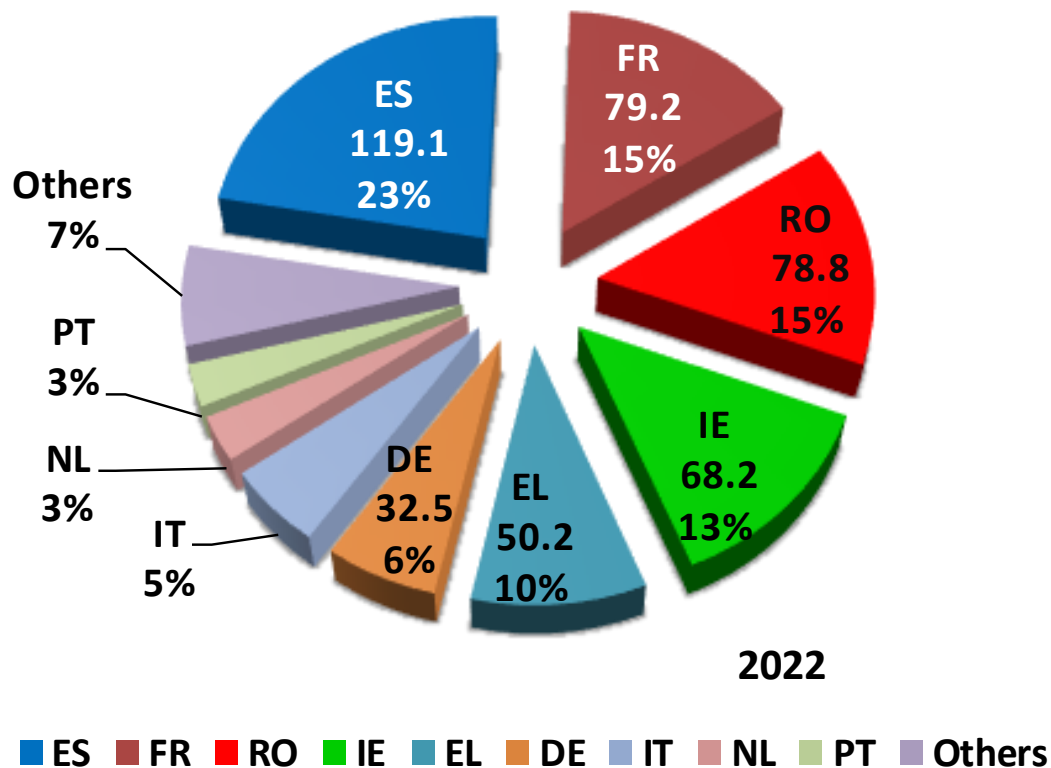
Civil Dialogue Group on Animal Production Feedback on market situation for Sheep & Goats June 2023



Production Concluding Data

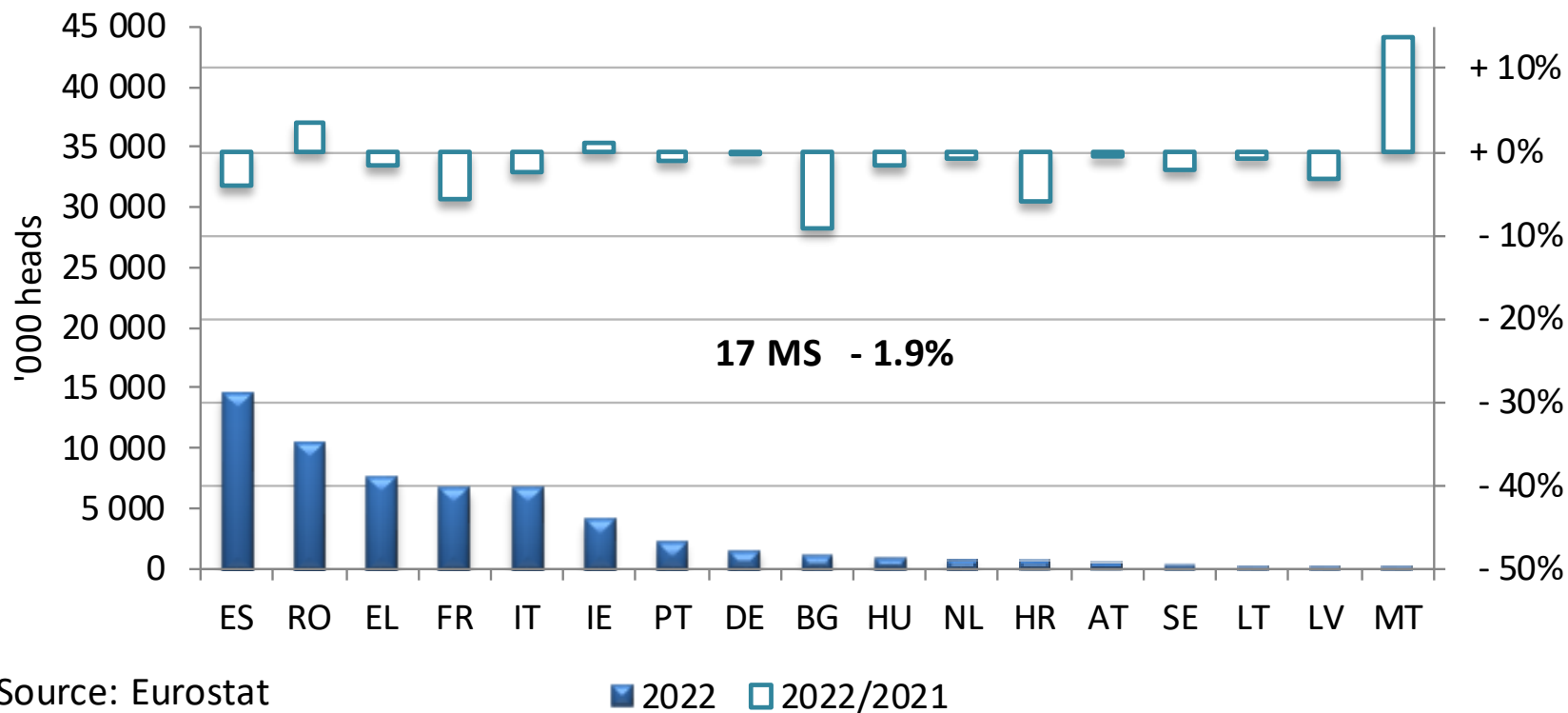
PRODUCTION

EU Sheep Meat Producers
(^{'000 tonnes})

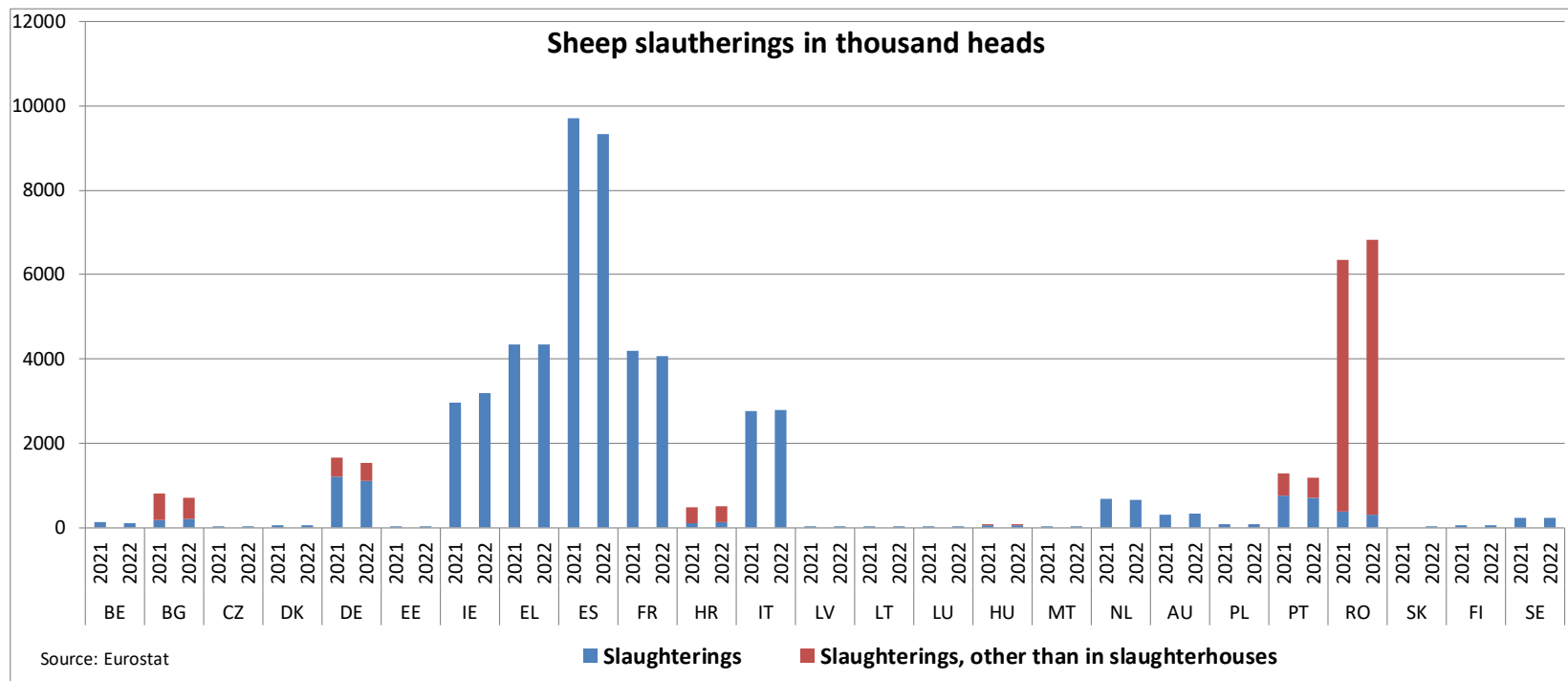


PRODUCTION

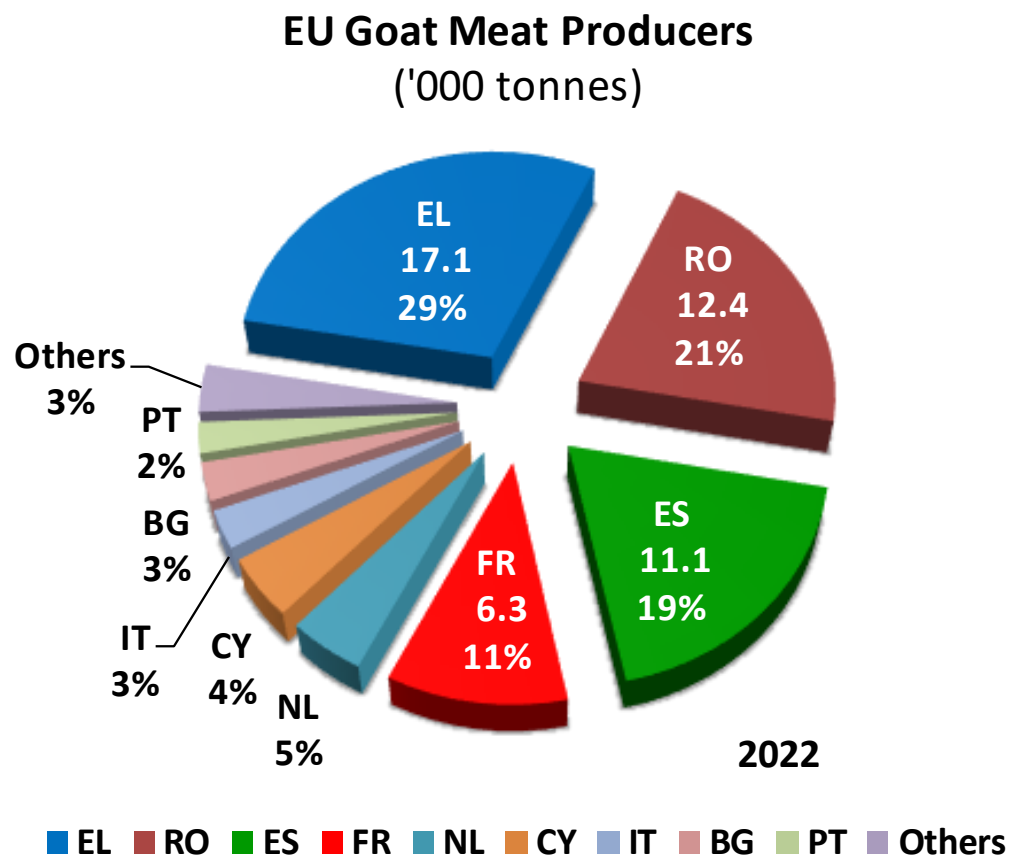
Annual evolution of sheep flocks reported by MS



PRODUCTION

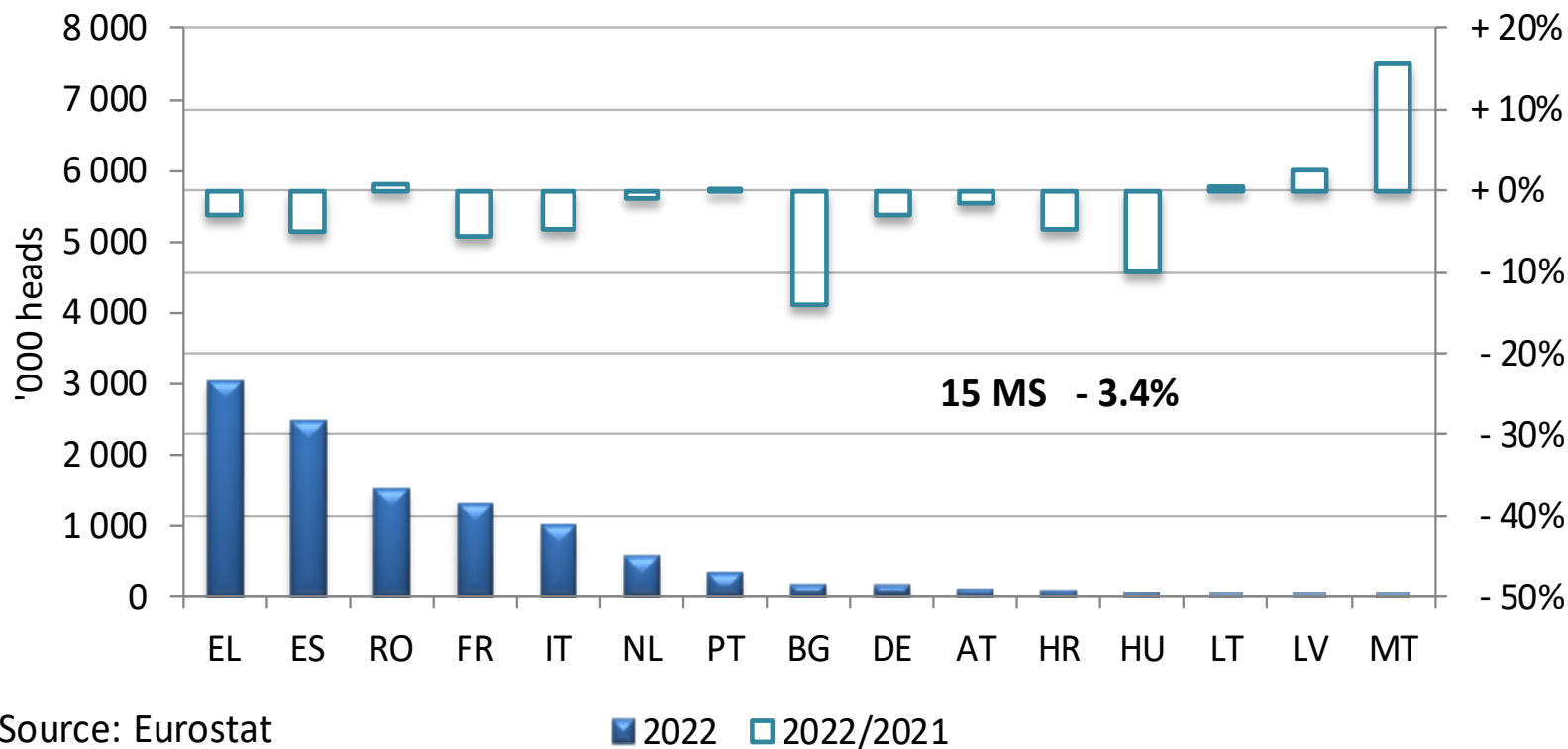


PRODUCTION



PRODUCTION

Annual evolution of goat flocks reported by MS





Outlook:

Feedback from market experts

Red background: Eurostat data

SHEEP LIVESTOCK (Thousand Heads)

Estimates of Spring 2023

	2021	2022	2023(f)	22/21 %	23/22 %
BE					
BG	1 199.6	1 089.7	1 089.7	- 9.2%	
CZ					
DK					
DE	1 508.1	1 516.9	1 520.0	+ 0.6%	+ 0.2%
EE					
IE	2 975.5	3 000.0	2 961.0	+ 0.8%	- 1.3%
EL	7 800.0	7 600.0	7 500.0	- 2.6%	- 1.3%
ES	15 081.4	14 452.6	14 452.6	- 4.2%	
FR	6 999.0	6 598.0	6 499.0	- 5.7%	- 1.5%
HR	654.0	615.0	615.0	- 6.0%	
IT	6 393.8	6 152.9	6 300.0	- 3.8%	+ 2.4%
CY	270.0	270.0	280.0		+ 3.7%
LV	90.3	87.3	87.3	- 3.3%	
LT	140.6	136.9	135.6	- 2.6%	- 0.9%
LU					
HU	887.0	885.0	900.0	- 0.2%	+ 1.7%
MT	12.7	14.5	14.5	+ 13.7%	
NL	729.0	724.0	724.0	- 0.7%	
AT	402.4	405.5	400.7	+ 0.8%	- 1.2%
PL					
PT	2 238.0	2 214.7	2 214.7	- 1.0%	
RO	10 087.4	10 442.9	10 442.9	+ 3.5%	
SI					
SK					
FI	12.3	13.4	14.0	+ 8.9%	+ 4.5%
SE	348.8	340.8	340.8	- 2.3%	
EU	57 830	56 560	56 492	- 2.20%	- 0.12%

GOAT LIVESTOCK (Thousand Heads)

Estimates of Spring 2023

	2021	2022	2023(f)	22/21 %	23/22 %
BE					
BG	215.0	184.7	184.7	- 14.1%	
CZ					
DK					
DE	146.0	147.0	149.0	+ 0.7%	+ 1.4%
EE					
IE	8.5	8.5	8.5		
EL	3 500.0	3 200.0	3 100.0	- 8.6%	- 3.1%
ES	2 589.8	2 463.5	2 463.5	- 4.9%	
FR	1 388.0	1 310.0	1 271.0	- 5.6%	- 3.0%
HR	86.0	82.0	82.0	- 4.7%	
IT	1 049.9	1 030.8	1 040.0	- 1.8%	+ 0.9%
CY	195.0	200.0	200.0	+ 2.6%	
LV	11.4	11.7	11.7	+ 2.5%	
LT	14.7	14.7	15.0	- 0.4%	+ 2.1%
LU					
HU	46.0	41.0	40.0	- 10.9%	- 2.4%
MT	5.6	6.5	6.5	+ 15.6%	
NL	575.0	570.0	570.0	- 0.9%	
AT	92.9	91.0	99.0	- 2.0%	+ 8.8%
PL					
PT	350.5	350.9	350.9	+ 0.1%	
RO	1 492.5	1 504.7	1 504.7	+ 0.8%	
SI					
SK					
FI	0.7	0.9	0.9	+ 28.6%	
SE					
EU	11 767	11 218	11 097	- 4.67%	- 1.07%

OUTLOOK

EU Sheep Production (expert forecast Spring 2023)

Thousand tonnes

	2021	2022	2023	2022/ 2021	2023/ 2022
ES	120.40	119.14	119.14	-1.0%	0.0%
RO	73.25	78.80	78.80	7.6%	0.0%
FR	81.60	79.30	75.30	-2.8%	-5.0%
IE	58.00	62.20	63.00	7.2%	1.3%
EL	44.00	46.00	46.00	4.5%	0.0%
IT	35.70	35.65	36.90	-0.1%	3.5%
DE	45.80	32.90	31.70	-28.2%	-3.6%
NL	15.63	15.91	15.91	1.8%	0.0%
AT	8.49	15.63	15.61	84.1%	-0.1%
PT	15.94	14.78	14.78	-7.3%	0.0%
BG	9.30	6.99	6.99	-24.8%	0.0%
HR	5.51	5.77	5.77	4.7%	0.0%
SE	4.71	4.68	4.68	-0.6%	0.0%
HU	2.67	2.60	2.60	-2.6%	0.0%
CY	2.50	2.50	2.50	0.0%	0.0%
BE	2.69	2.10	2.10	-21.9%	0.0%
DK	1.30	1.22	1.22	-6.2%	0.0%
PL	1.14	1.22	1.22	7.0%	0.0%
FI	1.23	1.22	1.21	-0.8%	-0.8%
LV	0.45	0.48	0.48	6.7%	0.0%
LT	0.17	0.18	0.18	5.9%	0.0%
EE	0.17	0.17	0.17	0.0%	0.0%
MT	0.15	0.16	0.16	6.7%	0.0%
SI	0.16	0.16	0.16	0.0%	0.0%
CZ	0.14	0.15	0.15	7.1%	0.0%
LU	0.05	0.04	0.04	-20.0%	0.0%
SK	0.00	0.01	0.01		0.0%
EU	531.2	530.0	526.8	-0.2%	-0.6%

XX No expert data, using Eurostat data instead

OUTLOOK

EU Goat Production (expert forecast Spring 2023)

Thousand tonnes

	2021	2022	2023	2022/ 2021	2023/ 2022
EL	14.00	15.00	15.00	7.1%	0.0%
RO	11.87	12.35	12.35	4.0%	0.0%
ES	10.13	11.07	11.07	9.3%	0.0%
FR	6.21	6.30	6.34	1.4%	0.6%
NL	2.84	2.68	2.68	-5.6%	0.0%
IT	2.15	2.13	2.10	-0.9%	-1.4%
BG	1.39	1.62	1.62	16.5%	0.0%
CY	1.50	1.50	1.50	0.0%	0.0%
PT	1.24	1.32	1.32	6.5%	0.0%
HR	0.50	0.45	0.45	-10.0%	0.0%
BE	0.39	0.40	0.40	2.6%	0.0%
DE	0.50	0.40	0.39	-20.0%	-2.5%
HU	0.19	0.20	0.17	4.2%	-14.1%
AT	0.14	0.16	0.17	14.3%	6.3%
PL	0.03	0.08	0.08	166.7%	0.0%
FI	0.01	0.01	0.01	7.7%	0.0%
CZ	0.00	0.00	0.00		
DK	0.00	0.00	0.00		
EE	0.00	0.00	0.00		
IE	0.00	0.00	0.00		
LV	0.00	0.00	0.00		
LT	0.00	0.00	0.00		
LU	0.00	0.00	0.00		
MT	0.00	0.00	0.00		
SI	0.00	0.00	0.00		
SK	0.00	0.00	0.00		
SE	0.00	0.00	0.00		
EU	53.1	55.7	55.7	4.9%	0.0%

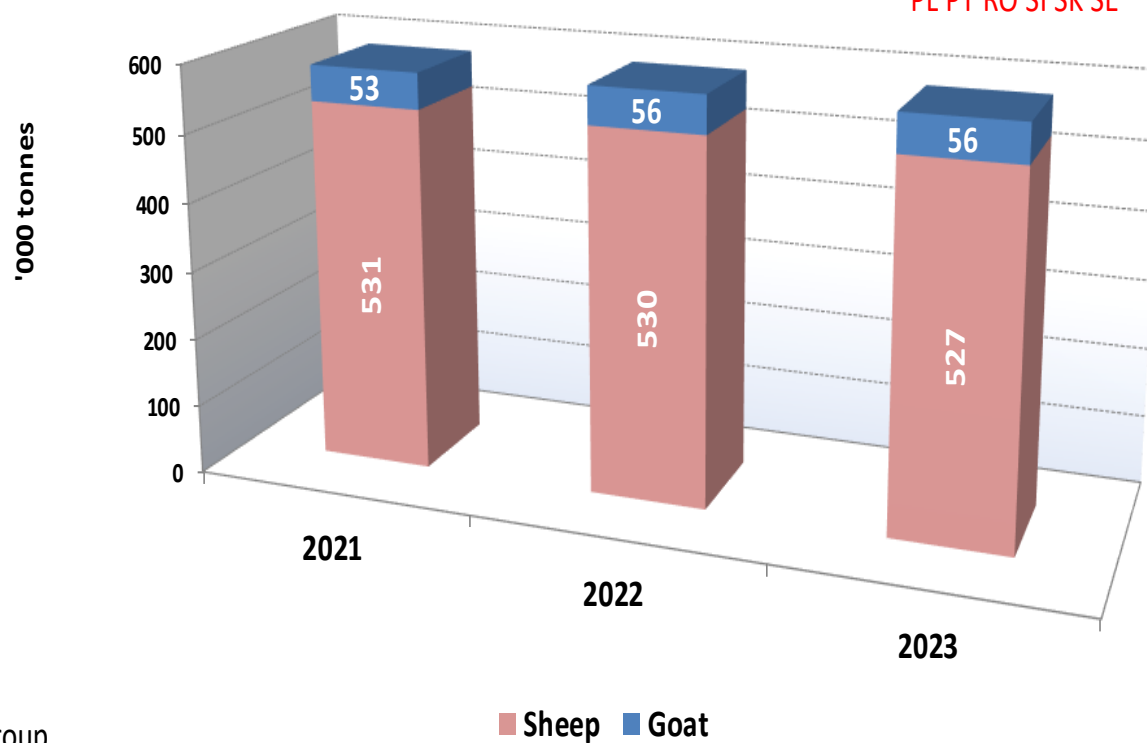
XX No expert data, using Eurostat data instead

OUTLOOK

Sheep + goat net production
(Foreseen from WG* experts)

Missing expert data from :

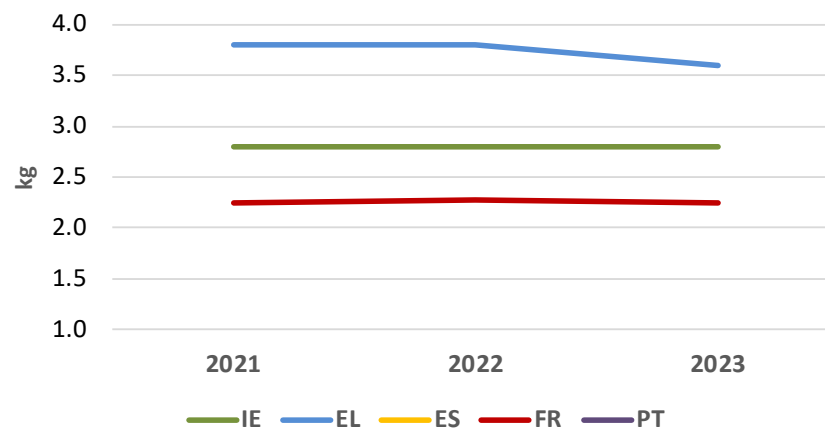
BE BG CZ DK EE ES HR LV LT LU MT NL
PL PT RO SI SK SE



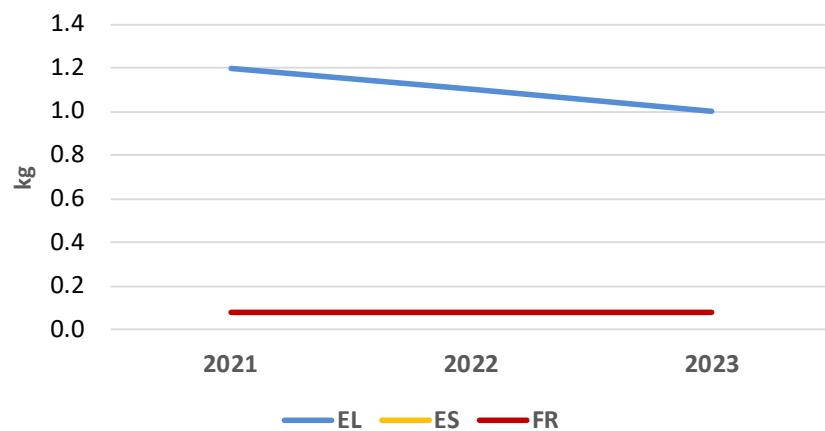
(*) Working Group

OUTLOOK

Sheep meat per capita consumption



Goat meat per capita consumption



To feed EU market discussion

Information is welcome on:

- Slaughtering data in BE, BG, ES, HR, NL, PL, PT, RO and SE
- Trade developments in BE, ES, NL and PT
- Goatmeat consumption rates in ES, PT and RO

From the questionnaires, clarifications on:

- CY: goat prices evolution
- DE: slaughtering decreases from 2022
- EL: trade developments with neighbouring countries
- FI and LT: trade data on sheepmeat
- FR: imports of meat for 2023 and goatmeat price evolution
- HU: evolution of sheep live exports versus domestic production
- IE: trade evolution with NI and self-sufficiency rate
- IT: increase of sheep slaughtering on farms for 2023